

## TRABUE ROAD OVER SCIOTO RIVER & OVER SCIOTO POINTE DRIVE

FRA-CR27-10.77 & 10.89  
PID 105759

**PUBLIC INVOLVEMENT MEETING**  
MARCH 15, 2023



Cornell R. Robertson, P.E., P.S.  
Franklin County Engineer  
[www.franklincountyengineer.org](http://www.franklincountyengineer.org)  
Facebook: @franklincountyengineer

**THANK YOU FOR ATTENDING!**  
**WE WILL GET STARTED AT 5:30 P.M.**

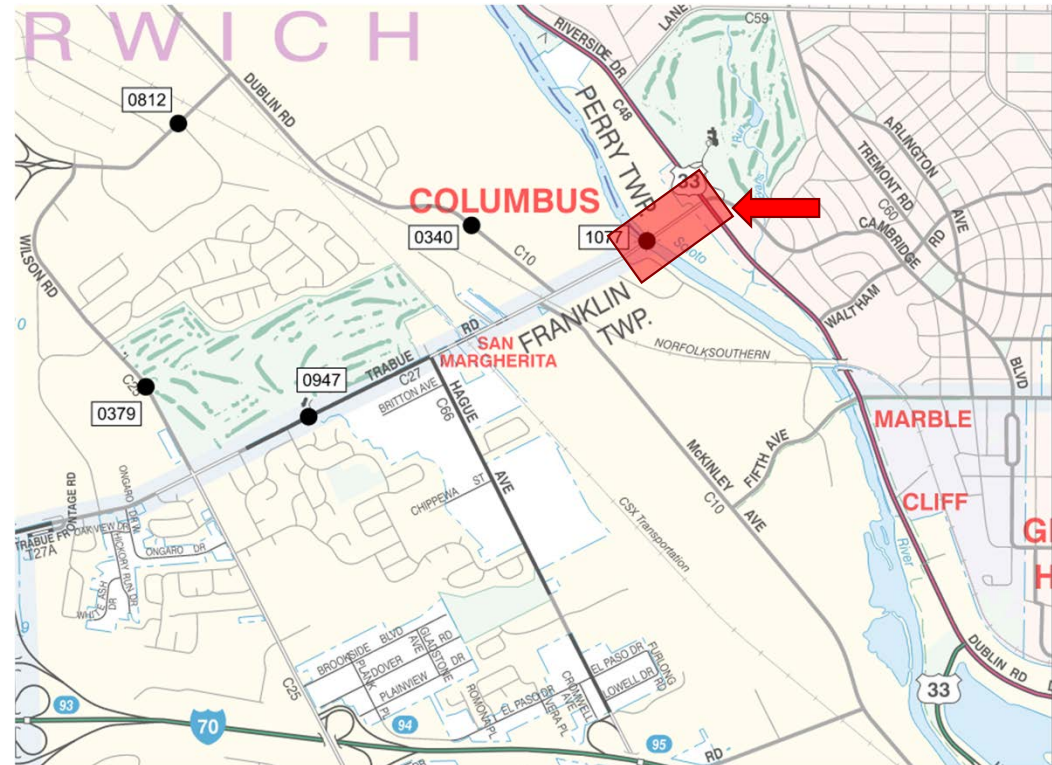
- We will give a brief presentation on the project and cover some of the Frequently Asked Questions from our previous public outreach.
- There will be a Q & A session at the end of the presentation.
- Staff will be available for further assistance until 7:00 P.M.

# Introductions



# Why are we doing this project?

- Started as a single bridge deck rehabilitation project
- Pedestrian connection added after coordination with local government partners
  - Became a corridor project including Complete Streets across both bridges
- Two Bridges will be upgraded:
  - Bridge 10.77 over the Scioto River
  - Bridge 10.89 over Scioto Pointe Drive

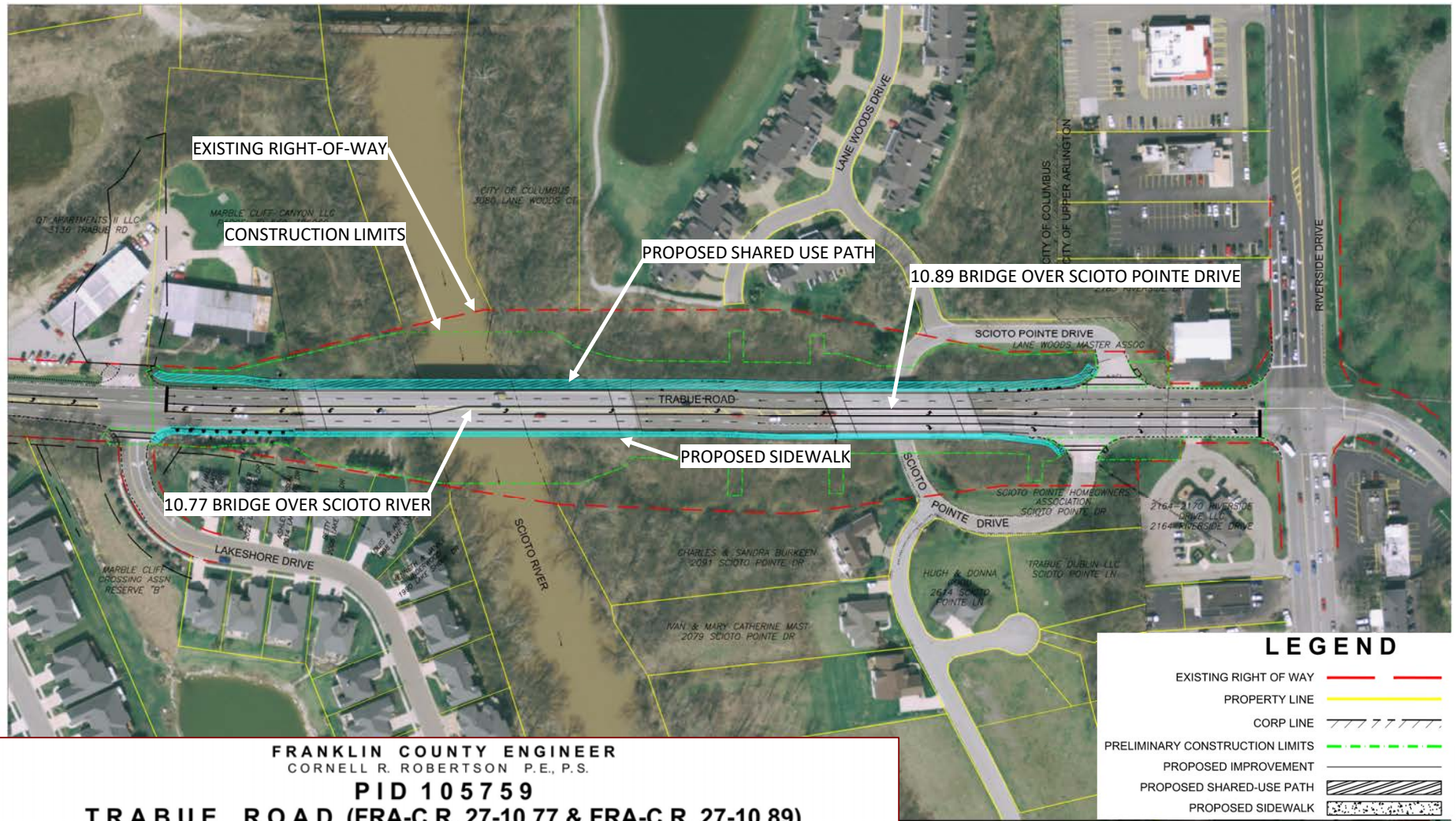




# Project Partners & Funding

- FCEO obtained funding that covers a new bridge deck and the addition of sidewalk and Shared Use Path (SUP)
  - \$9.5 million from MORPC
  - \$893k in grant and \$2.7 million loan from OPWC
- Funding was awarded based on new and planned development in the area
  - The Quarry and Quarry Trails Metropark
  - Upper Arlington SUP on Lane Avenue & Riverside Drive
  - Columbus Scioto Trail future connection
- New and improved non-vehicular connection was key to funding application
  - North Side: SUP
  - South Side: Sidewalk





FRANKLIN COUNTY ENGINEER  
CORNELL R. ROBERTSON P.E., P.S.

PID 105759

TRABUE ROAD (FRA-C.R. 27-10.77 & FRA-C.R. 27-10.89)  
OVER SCIOTO RIVER & SCIOTO POINTE DRIVE



# What work is proposed?

- New sidewalk and Shared Use Path from Lake Shore Drive to Scioto Pointe Drive
  - Adding beam lines to both bridges
  - No new vehicular lanes will be added
- New bridge decks and new asphalt pavement
  - New decks will have grooved pavement parallel to the path of travel
    - Much quieter, will have a significant reduction in noise
- New concrete bridge walls
  - 42" tall, will run from western end of Scioto River bridge to eastern edge of Scioto Pointe Drive bridge
  - New bridge walls will lessen noise
- New lighting, new retaining wall





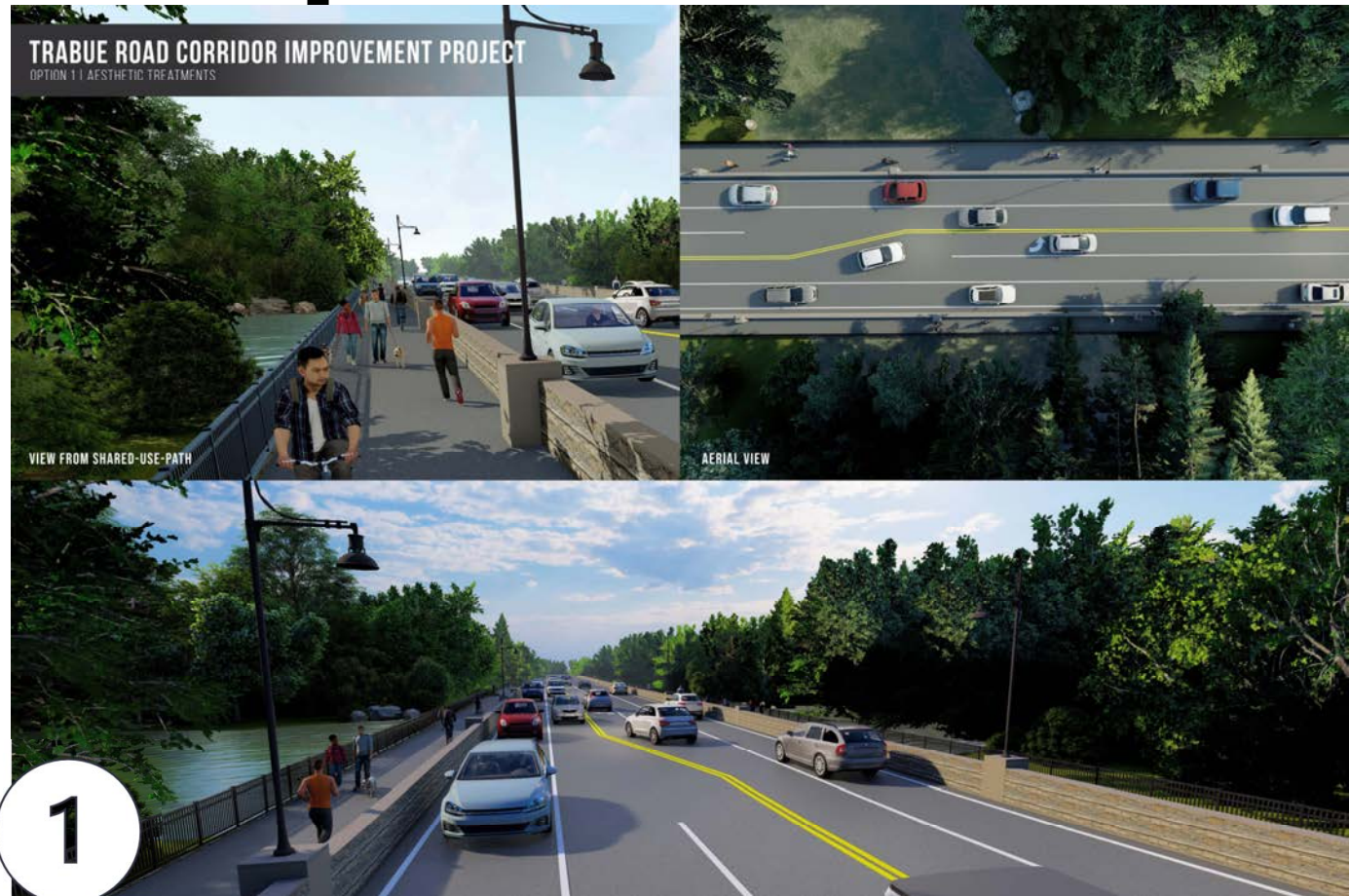
# Aesthetic Renderings

## Option 1 - Stacked Stone Aesthetic

- Rock formliner
- Cost needs to be covered with existing funding

## Option 2 – Standard Barrier

- Basic option - No formliner, standard concrete



# Aesthetic Renderings

## Option 1 - Stacked Stone Aesthetic

- Rock formliner
- Cost needs to be covered with existing funding

## Option 2 – Standard Barrier

- Basic option - No formliner, standard concrete





# Public Involvement Timeline



28 Aug. 2022

Virtual Zoom Meeting



Nov.–Dec. 2022

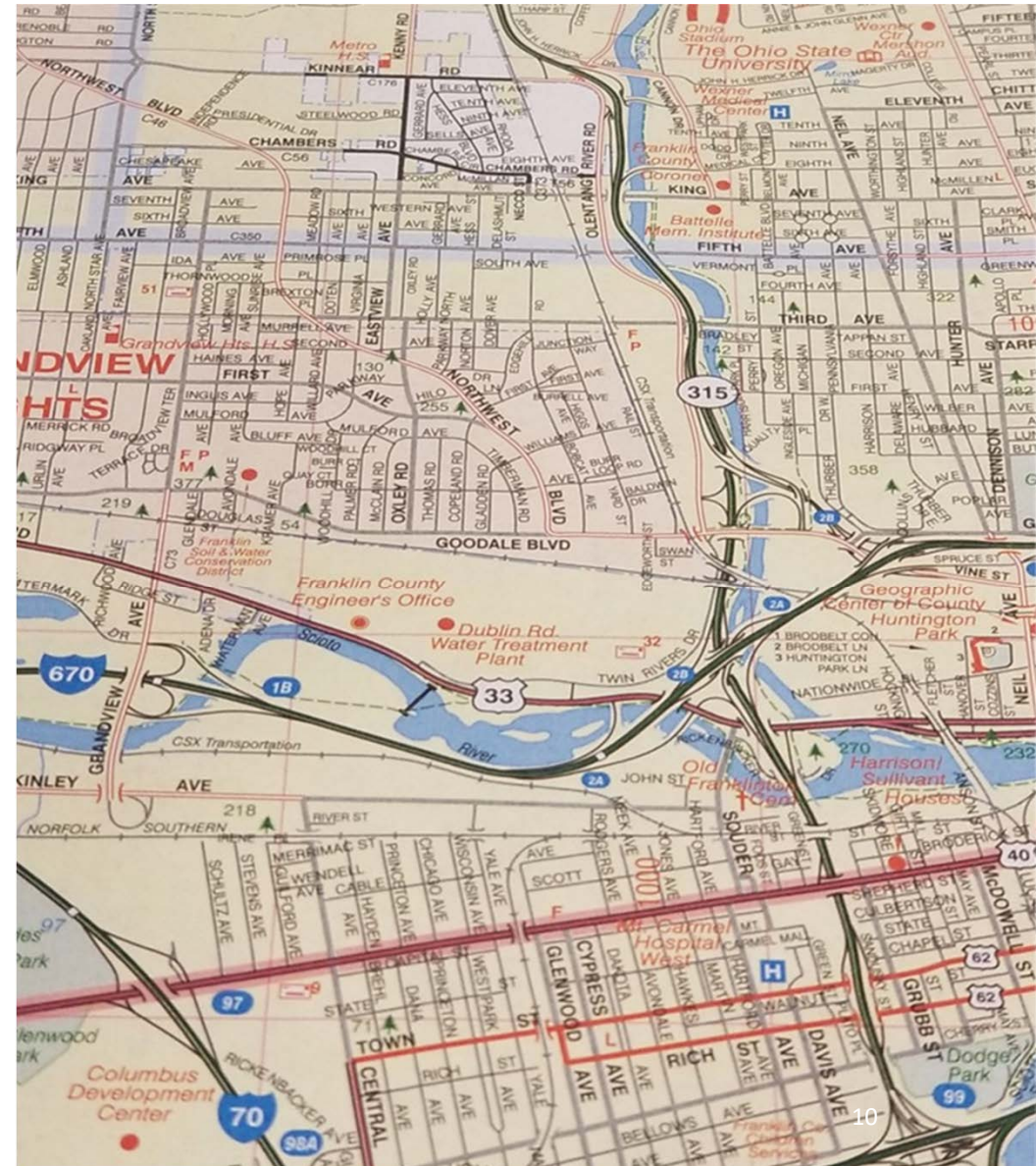
Mailer with Comment Period



15 Mar. 2023

In-Person Meeting\*

\*Public Comment Period open until 15 Apr. 2023





# Frequently Asked Questions

## Noise Wall / Barrier

- Several improvements done with this project will reduce noise
- Project will not increase noise in the corridor
- Not required by FHWA regulations, therefore it would not be funded
- Tall noise wall / barrier is not cost-effective in this area

## Sidewalk & SUP Connectivity

- We don't want bridges to be the "missing link" in the future
- Studies do not show significant increase in crime with new pedestrian infrastructure
- Walkability increases property values

## Vegetation & Tree Removal

- Trees and vegetation may be removed within the construction limits, but not beyond
- Required to replace trees and native vegetation by Columbus regulations

## Traffic In the Corridor

- We will not be adding vehicular lanes to Trabue Road
- Columbus Traffic Impact study determined additional lanes are not feasible

# Project Schedule

- Engineering Design
  - 2022 through 2023
- Utility Relocation
  - Fall 2023
- Construction
  - Phased construction
  - 2024 through 2025



# QUESTIONS?

Contact: Kailen Akers, PE, Bridge Design Engineer  
[kakers@franklincountyengineer.org](mailto:kakers@franklincountyengineer.org)  
614-525-4825

[www.franklincountyengineer.org/publicmeetings](http://www.franklincountyengineer.org/publicmeetings)  
Facebook: @franklincountyengineer

