

Project Information Sheet

Johnstown Road at 17th Avenue and Interstate-670EB Roundabout Project

(Project ID 120449)

May 13, 2025



Project Description:

- The project proposes to construct a single-lane roundabout at the intersection of Johnstown Road, 17th Avenue and the I-670EB Exit Ramp.
- Additional improvements include installation of shared use path & crosswalks, lighting, and drainage improvements.
- Current construction cost estimate is \$3.1 million.

Project Purpose:

- Improve intersection safety and alleviate congestion.

Project Need:

2023 Safety Study

- 19 total crashes from 2019-2022. 9 injury crashes.
- Identified roundabout as the recommended improvement to achieve project purpose.
- 5th on FCEO's 2024 unsignalized intersection priority list.
- Received \$2 million ODOT HSIP Safety Grant.

Potential Impacts:

Environmental

- Impacts to existing trees on the north side of the intersection.

Utilities

- Stormwater conveyance through roadside ditches and storm sewer.
- Aerial and underground utility relocations needed.
- Relocations work beginning Summer 2026.

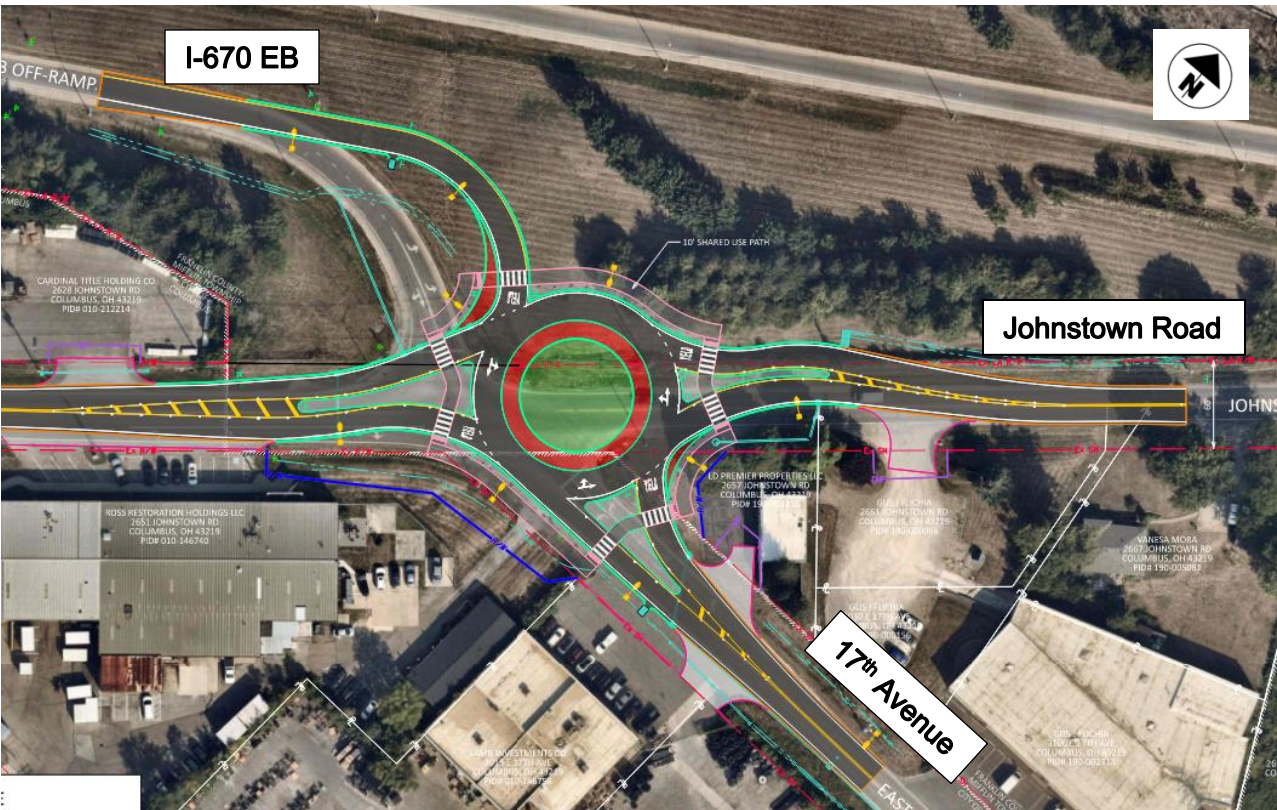
Right-of-way

- Temporary and permanent right-of-way needed.
- Driveway realignments to control access.
- A real estate representative will contact you directly at a later date to discuss the right-of-way needs, acquisition process and your rights under that process.

Project Location and Detour Map



Planned Detour Route Project & Closure



Maintenance of Traffic:

- The intersection will be closed to traffic during the roundabout construction. The detour for the project will follow the route outlined in the map above.

Proposed Improvement Summary

- Replace the existing stop controlled skewed intersection of Johnstown Road, 17th Avenue and I-670EB Exit Ramp with a single-lane roundabout.
- Construct a Shared Use Path (SUP) and crosswalks at the intersection. Rectangular Rapid Flashing Beacons (RRFB's) will be added at the crosswalks for each leg of the intersection.
- Include new curb and gutter, curb ramps, street lighting, and storm sewer.

Anticipated Schedule

