

RAISE Application for Alum Creek Drive

LOCATION

- Alum Creek Drive from State Route 317 to Groveport Road (2.7 miles)
- Maintained by Franklin County and the City of Obetz
- Within the urbanized area of the City of Columbus
- Passes through the cities of Columbus, Groveport, and Obetz

PROPOSED CONSTRUCTION

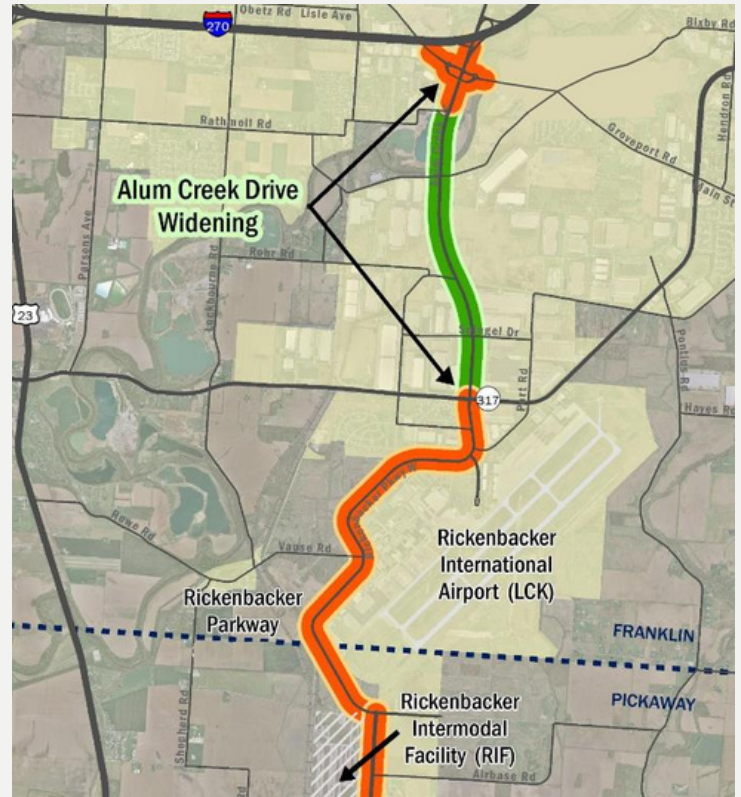
- Builds an additional through lane in each direction on Alum Creek Drive
- Replaces the two existing bridges over Big Walnut Creek
- Implements Complete Streets standards by adding a shared-use path on one side and a sidewalk on the other in an area where bike and pedestrian facilities are limited

IMPORTANCE OF AREA

- Alum Creek Drive links Rickenbacker International Airport and Norfolk Southern Intermodal Facility to the Interstate system
- Part of the National Highway System and U.S. DOT Primary Freight Highway System
- Located in Foreign Trade Zone 138
- 36,000 AADT with 20% truck traffic
- Traffic volume anticipated to grow by 20% by 2040
- Additional 7700 jobs projected by 2040
- Within a day's drive of 50% of the U.S. population
- Hosts the Connected Vehicle Environment that facilitates remote signal monitoring and new vehicle technology

PROJECT IMPACT

- **Regionally and nationally significant project for economic development and logistics, including connections to Intel, UPS, Amazon, Cardinal Health, Coca Cola, Eddie Bauer, Walmart, and FedEx**
- **Reduces congestion-related crashes**
- **Serves freight, vehicles, transit, bicyclists, and pedestrians**



PROJECTED INVESTMENT

- Preliminary Engineering: \$2,160,000
- Detailed Design: \$3,961,000
- Right of Way: \$1,370,000
- Construction: \$51,081,000
- **TOTAL: \$58,572,000**

SECURED FUNDING PARTNERS

- \$1.3 million from ODOT's Transportation Review Advisory Council (TRAC)
- \$8.5 million of federal funds distributed from the Mid-Ohio Regional Planning Commission, central Ohio's MPO