



# WELCOME INDUSTRY PARTNERS!



# **FRANKLIN COUNTY ENGINEER'S 2025 SPRING PROGRAMMATIC CONSULTANT OPEN HOUSE**



Adam W. Fowler, P.E., P.S.  
Franklin County Engineer  
[www.franklincountyengineer.org](http://www.franklincountyengineer.org)





# Franklin County Engineer's 2025 Spring Programmatic Consultant Open House

Agenda:

1. **Welcome** – *Franklin County Engineer Adam Fowler*
2. **Engineer's Office Update** – *Fritz Crosier*
3. **Financial Report** – *Brent Welch*
4. **2025 Construction** – *Brad Foster*
5. **2024 Annual Report (Sneak Peak)** – *Simone Burley*
6. **Introduction of Teammates**
7. **2025 Spring Programmatic Project Details** –  
*Matt Rehfus, Ed Herrick, and Mike Andrako*
8. **Closing Remarks / Q&A**

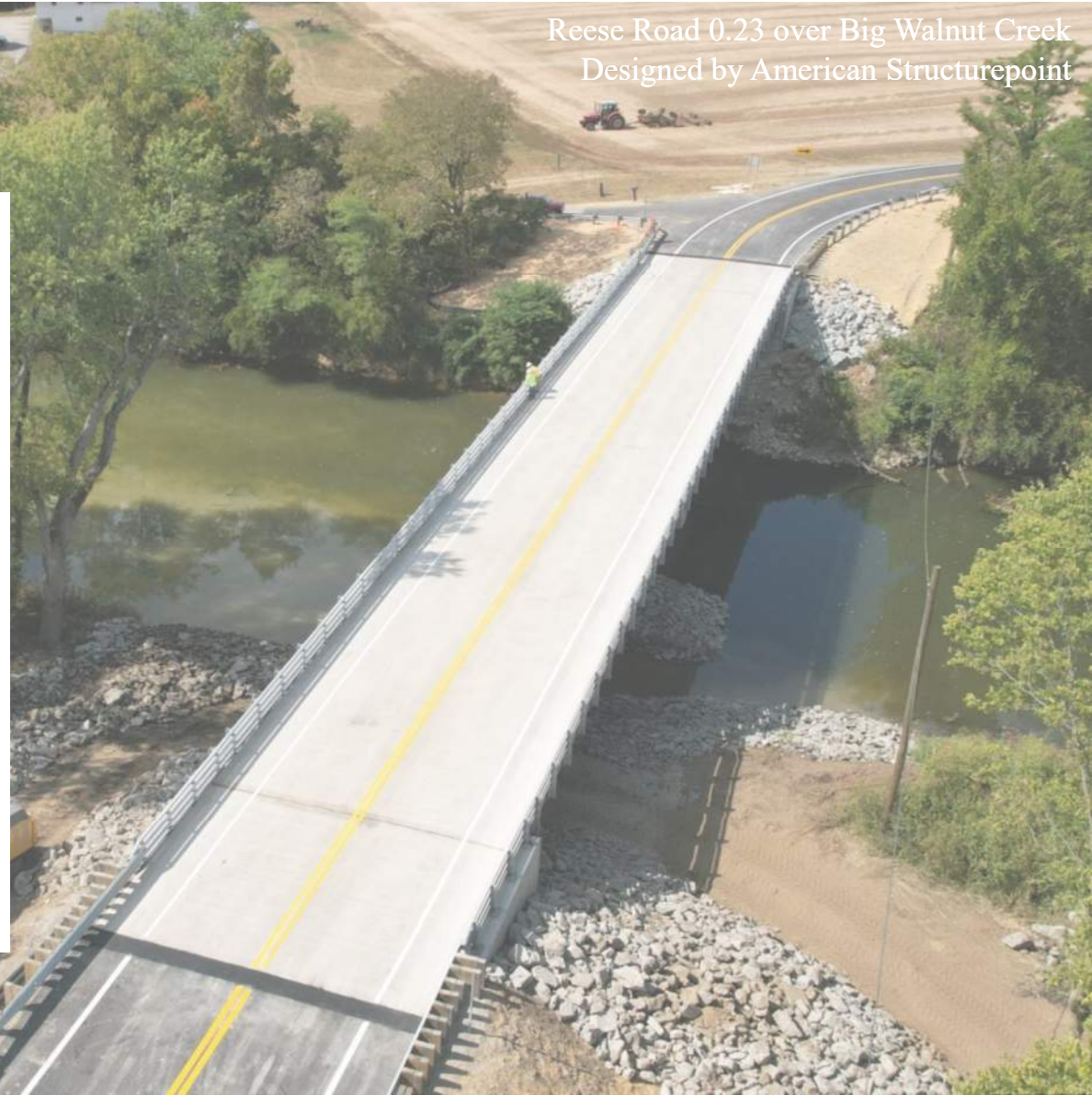


Reynoldsburg-New Albany Road at Havens Road  
Designed by CHA Consulting, Inc.

# Engineer's Office Update



Reese Road 0.23 over Big Walnut Creek  
Designed by American Structurepoint





# Financial Report



Ferris Road at Walford Street  
Designed by ms consultants, Inc.

50 East Mound Street  
Designed by Dynotec, Inc.

# 2025 Construction

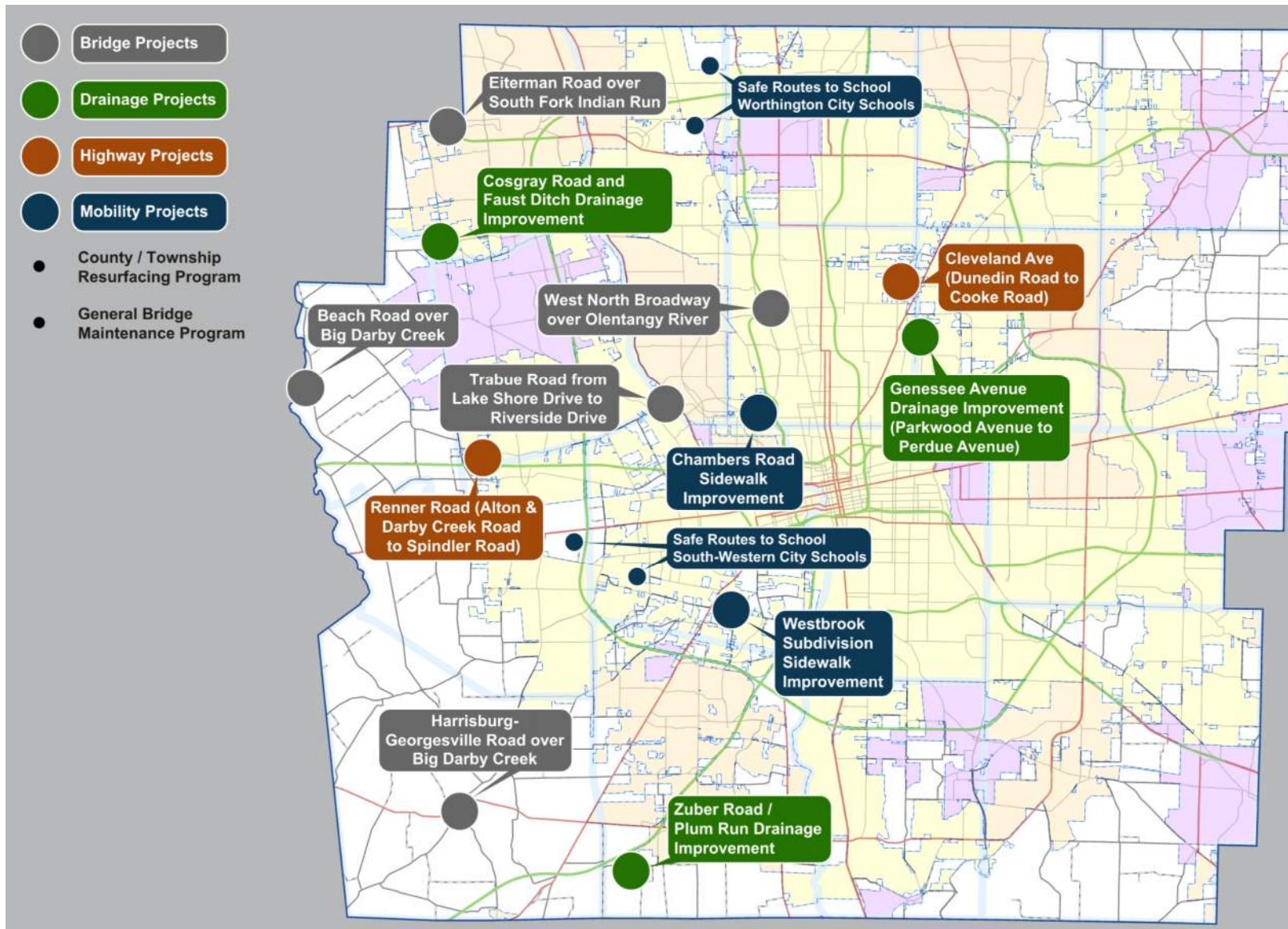




# CONSTRUCTION 2025

- Bridge - 5 Projects
  - Beach Road 0.00 Over Big Darby Creek
  - Eiterman Road 0.75 Over South Fork Indian Run
  - Trabue Road Bridge over the Scioto River
  - West North Broadway 1.18 over Olentangy River
  - General Bridge Maintenance Program
- Roadway - 3 Projects
  - Case Road Area Storm Sewer Improvement
  - Cleveland Avenue
  - Renner Road
- Drainage - 3 Projects
  - Cosgray Road and Faust Ditch Drainage Improvement
  - Genessee Avenue Drainage Improvement
  - Zuber Road/Plum Run Drainage Improvement
- Mobility - 3 Projects
  - Chambers Road Sidewalk Improvement
  - Westbrook Subdivision Sidewalk Improvements
  - Safe Routes to School
- Resurfacing - 2 Projects
  - County and Township Resurfacing Programs









## 2024 PROJECT OF THE YEAR AWARD

The **ASHE Central Ohio Section** invites members to submit entries for the 2024 Project of the Year Award, recognizing outstanding transportation projects in Ohio. Celebrate excellence in transportation! For questions, contact an ASHE Central Ohio Section Board Member.

### Eligibility:

Projects must be transportation-related and located within Ohio. Examples include highways, bridges, traffic signals, railroads, public transit, and bikeways. All eligible projects may display a 30" x 30" exhibit board at the May Awards Luncheon.

### Categories:

- \$10 million and under construction cost
- Over \$10 million construction cost
- Peer's Choice

### Judging Criteria

- Benefits to the public
- Innovation and unique features
- Complexity
- Aesthetics and sustainability

### Awards Include

- Recognition for the Owner, Designer, and Prime Contractor at the ASHE Awards Luncheon.
- Luncheon reimbursement for the overall Project of the Year winners (one (1) owner, one (1) prime contractor, and one (1) designer).
- Publication opportunities in the ASHE newsletter and national magazine (excluding Peer's Choice).
- Free entry into the ASHE Regional Project of the Year competition (excluding Peer's Choice).

### Submission Details

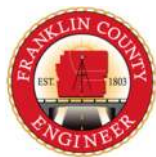
- **Entry Fee:** \$100 per project (waived for first entry if a Highway Club Member is on the team). Fees support the ASHE Central Ohio Scholarship Fund.
- **Deadline:** **March 21, 2025.**
- **Submission:** Provide entries to **Brad Foster**.

Visit: <http://centraloh.ashe.pro/> for official entry forms or contact **Brad Foster** (Franklin County Engineer's Office) at 614-579-5614 or [bfoster@franklincountyengineer.org](mailto:bfoster@franklincountyengineer.org)



Hayden Run Road 6.74 over Scioto River  
Designed by Ribway Engineering Group and FCEO

2024  
Annual Report  
Sneak Peak







An Agency of  
**ACTION, INNOVATION  
AND COLLABORATION**

**2024 | ANNUAL REPORT**

## 2024 **IMPACT**

Became the  
**First agency in Ohio**  
accepted into the  
**Safety Partnership**  
**Agreement program,**  
aiming to promote  
workplace safety  
and proactive risk  
management across  
the state

**763**  
lane miles  
maintained

**246**  
trees  
trimmed

Received the  
prestigious  
**Asset Management**  
**Award of Excellence**  
for achievements in  
innovation through  
VUEWorks® modules

**2,981**  
acres mowed

**13 tons**  
of litter  
collected from county roadways,  
filling nearly three garbage trucks

**1,170,715**

miles traveled by  
FCEO vehicles

The equivalent  
of making almost  
five round trips to  
the Moon

# INTRODUCTION OF DEPARTMENT HEADS AND PROJECTS

- Matt Rehfus – Highway Design Engineer
- Ed Herrick – Bridge Engineer
- Mike Andrako – Mobility Engineer



Norton Road at Kropp Road and Grove City Road  
Designed by 2LMN





Agler Road 1.52 over Alum Creek  
Designed by E.P. Ferris & Associates

2025  
Spring  
Programmatic  
Projects



# COOKE ROAD CORRIDOR (GLENMAWR AVENUE TO KARL ROAD)

## Detailed Design – Corridor Improvement

- Existing two-lane collector roadway that connects North Linden area to Interstate 71
- Substandard shoulder and drainage
- No existing pedestrian infrastructure
- Phase 2 of the Cooke Road Corridor Improvement
  - Phase 1, from Karl Road to Cleveland Avenue, is planned for construction in 2026
- Successful MORPC Attributable Funding application in 2024.
  - \$9,155,409 – Construction FY 2031
  - Preferred alternative – Reconstructed two-lane section with improved drainage, a shared-use path, and sidewalk. Minor intersection improvements at Cooke Road and Maize Road.





Havens Corners Road at Waggoner Road



## HAVENS CORNERS ROAD AT WAGGONER ROAD

Detailed Design – Modern Roundabout

- Existing signalized intersection in Jefferson Township
- Intersection of 45 mph major arterial - Havens Corners Road - and 50 mph (north leg) /45mph (south leg) minor arterial - Waggoner Road.
- In 2024, intersection was ranked #9 on Franklin County's Signalized High-Crash Priority Intersection List
  - 2021-2023 - 26 crashes including 8 injuries
- Successful ODOT Safety (HSIP) application in 2024.
  - \$3,483,100 – Construction FY 2030
  - Preferred alternative – Single lane with right turn lanes in the opening year. Expandable in the future.

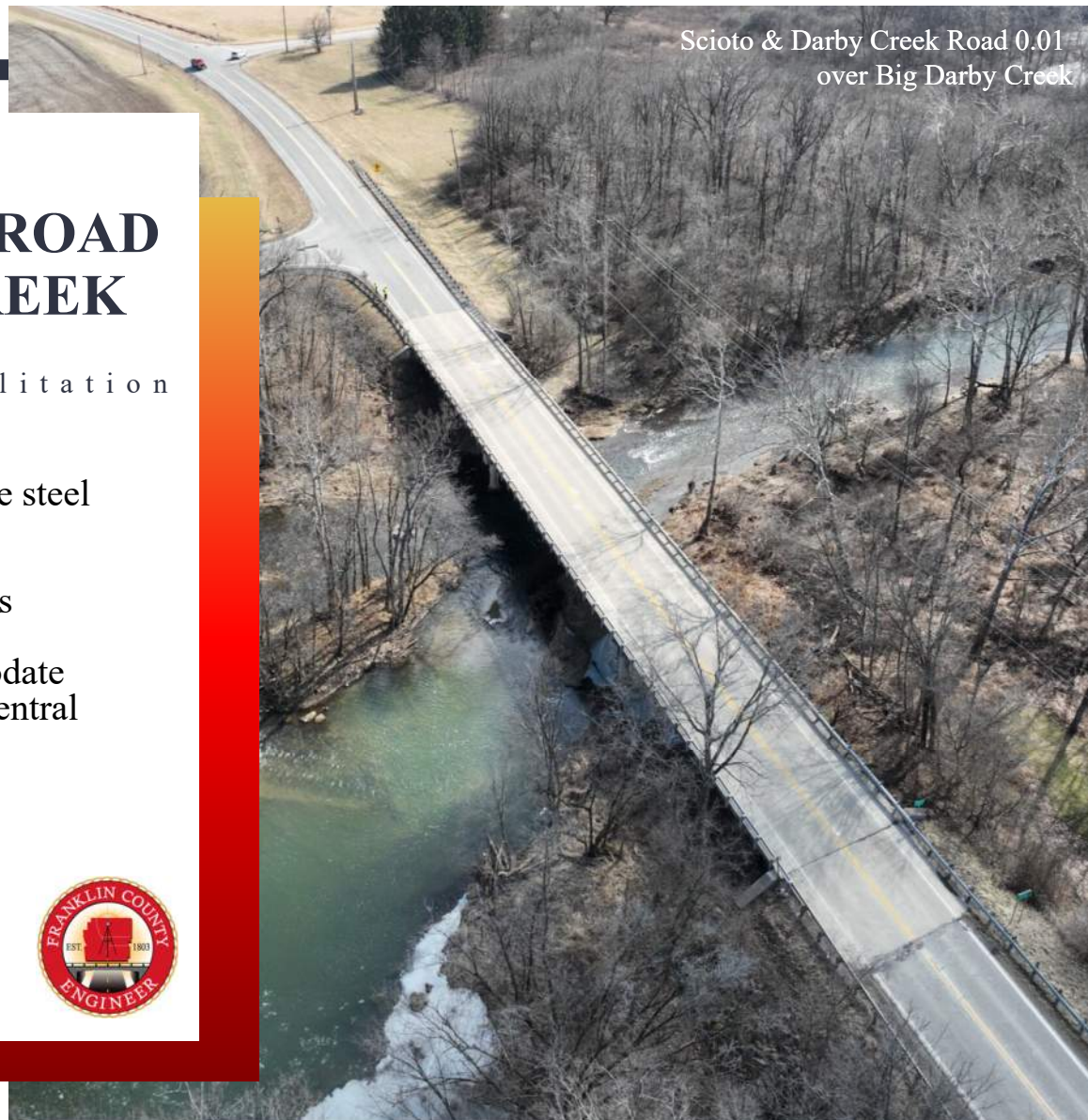


Scioto & Darby Creek Road 0.01  
over Big Darby Creek

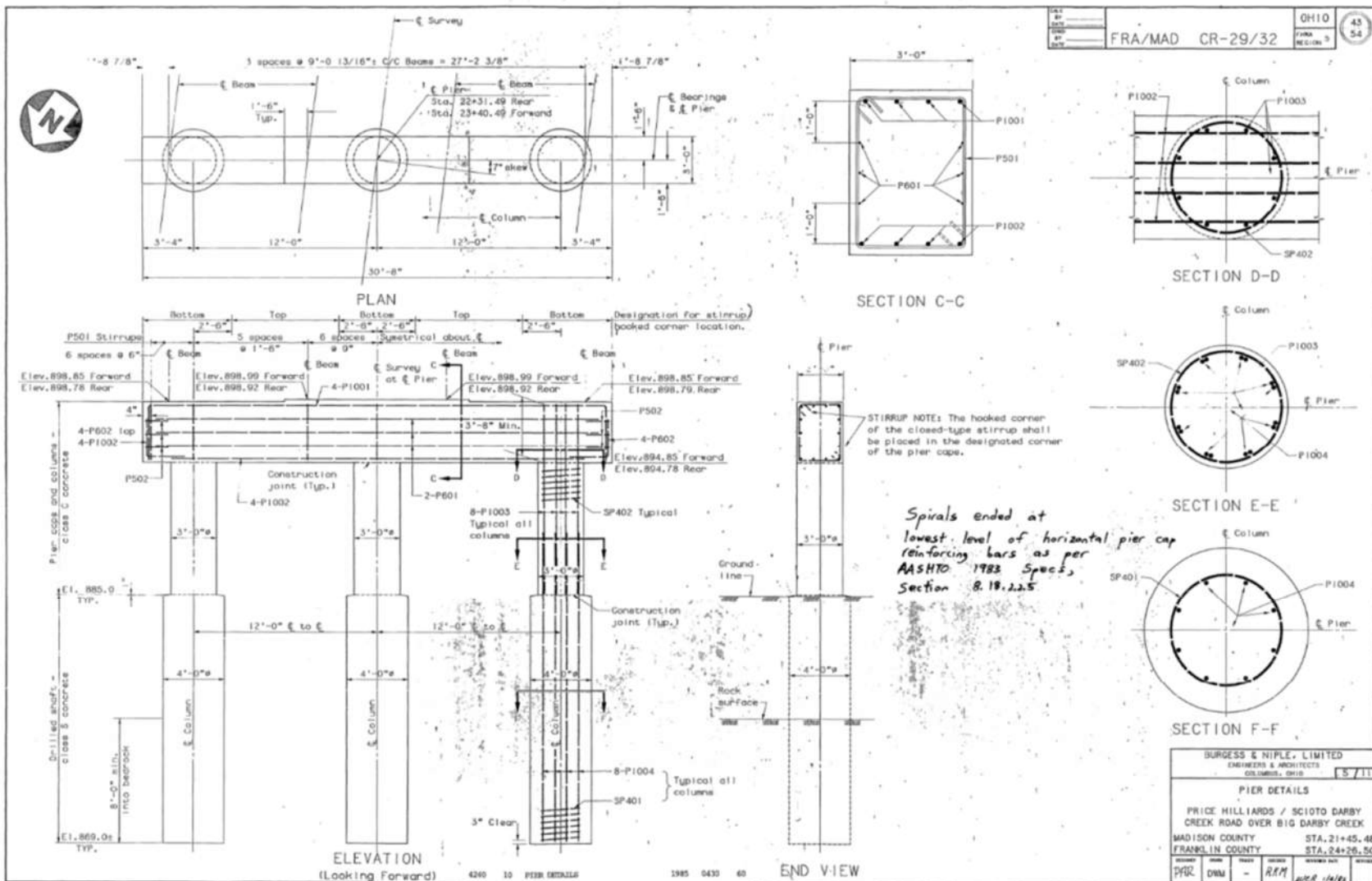
# SCIOTO & DARBY CREEK ROAD 0.01 OVER BIG DARBY CREEK

Detailed Design – Bridge Rehabilitation

- BRO-C0029-0.01
- Three span, 281-foot, continuous composite steel beam bridge.
- The structure was built in 1986.
- The structure is rated an “8”, but the deck is currently rated a “4”.
- Redesign and replace the deck to accommodate the current lanes of traffic and the future Central Ohio Greenways Darby Creek Trail.







Chippewa Street 0.02 over Barbee Ditch

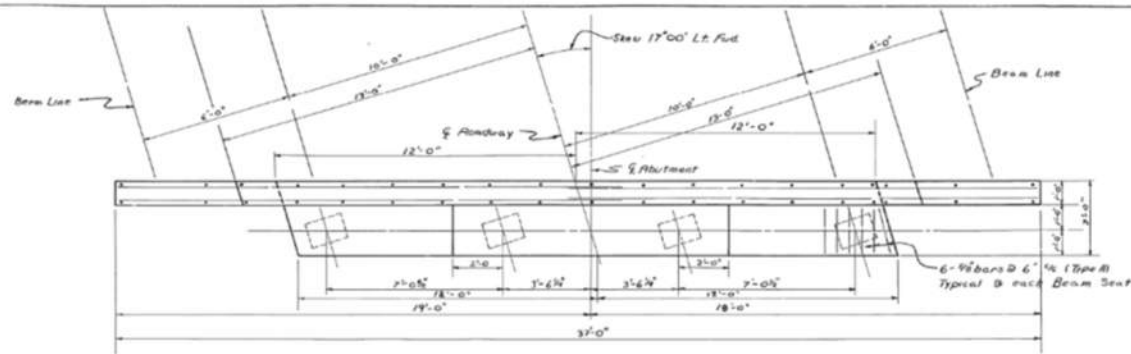
## CHIPPEWA STREET 0.02 OVER BARBEE DITCH

Detailed Design – Bridge Rehabilitation

- FRA-T2353-0.02
- Single span, 52-foot, steel beam structure with a non-composite concrete deck and asphalt wearing surface on concrete abutments.
- The structure was built in 1964 using salvaged steel beams of unknown age.
- The structure is currently rated a “4” due to beam deterioration. The abutments are in good condition.
- Redesign and replace the superstructure for accelerated construction due to a dead-end road.

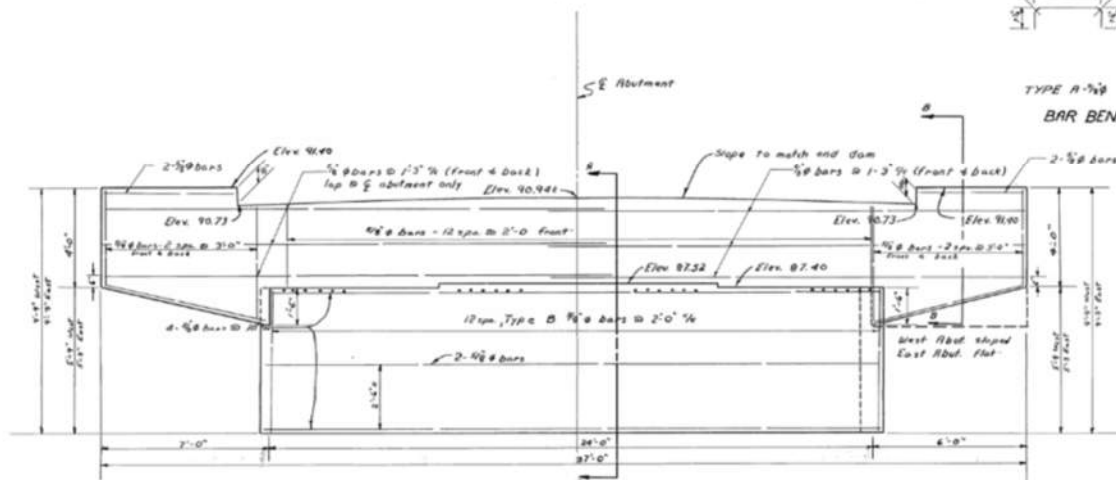




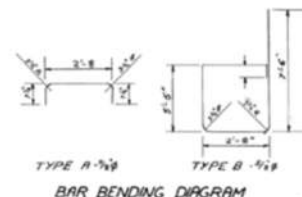


ABUTMENT PLAN

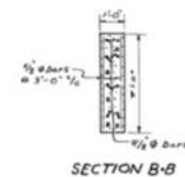
CONCRETE for abutments shall be Class E.  
 REINFORCING STEEL shall be 2" clear from face of concrete unless otherwise shown.  
 BENCH MARK: R.R. spike in 12" Ash 45' Right of Station 6+62 Elevation, 89.05



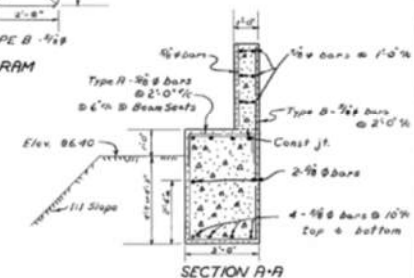
ABUTMENT ELEVATION



BAR BENDING DIAGRAM

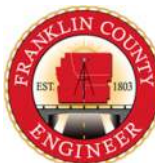


SECTION B-B



SECTION A-A

FRANKLIN COUNTY OHIO			
OFFICE OF COUNTY ENGINEER			
STEEL BEAM BRIDGE			
CHIPPEWA STREET			
Design Loading CF-130(3-15-46)			
FRANKLIN TWP 1964			
Engineer	Drawn	Checked	Reviewed
150	150		



# TRANSIT SUPPORTIVE INFRASTRUCTURE PROJECTS

Detailed Design - Active  
Transportation

- Galloway Road (Broad Street to O'Harra Road)
  - TSI Design Funding - \$685,000
- Grener Road (West Broad Street to Sullivant Avenue)
  - TSI Design Funding - \$375,000
- Groveport Road (Ebright Road/Front Street/Corbett Road to Canal Winchester Corporation Limit)
  - TSI Design Funding - \$900,000
- McComb Road (Home Road to Stoneridge Park)
  - TSI Design Funding - ~\$150,000







# TRANSIT SUPPORTIVE INFRASTRUCTURE PROJECTS

Detailed Design - Active  
Transportation

- Renner Road (Spindler Road to Hilliard & Rome Road)
  - TSI Design Funding - ~\$225,000
- Reynoldsburg-New Albany Road (Clark State Road to Morse Road) and Morse Road (Reynoldsburg-New Albany Road to Havant Drive)
  - TSI Design Funding - \$250,000
- Snouffer Road (Bride Water Boulevard to Smoky Row Road)
  - TSI Design Funding - ~\$150,000
- Winchester Pike (Refugee Road to Shannon Road)
  - TSI Design Funding - \$547,500





# 2025 Spring Programmatic Consultant Open House

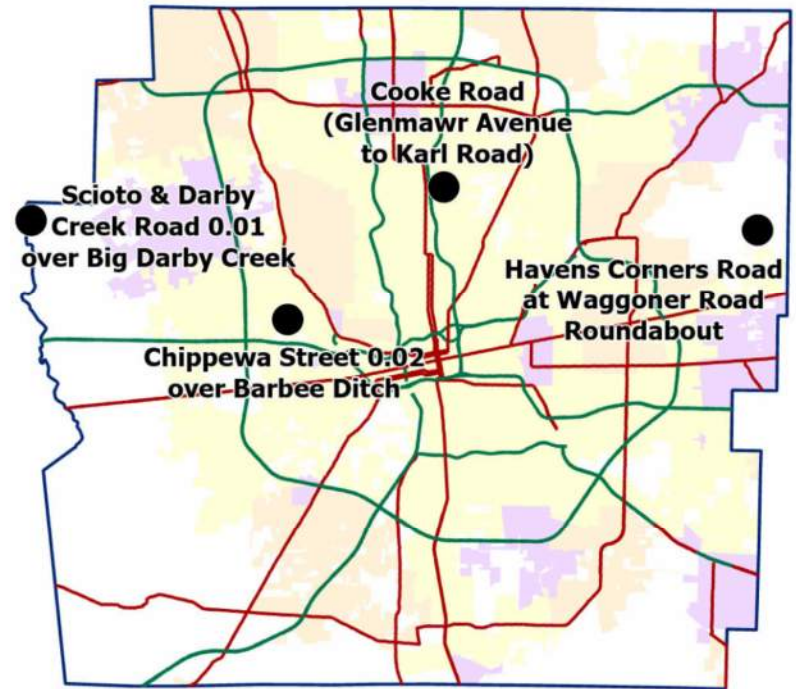
## Road Improvement Projects



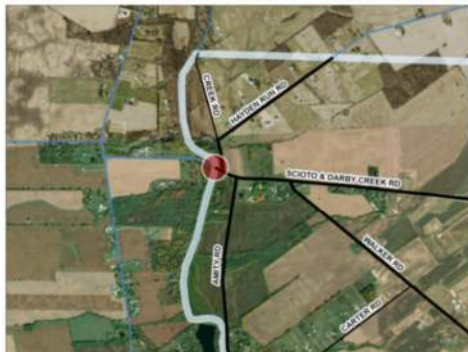
Cooke Road (Glenmawr Avenue to Karl Road)



Havens Corners Road at Waggoner Road Roundabout



## Bridge Improvement Projects



Scioto & Darby Creek Road 0.01 over Big Darby Creek



Chippewa Street 0.02 over Barbee Ditch



**Adam W. Fowler, P.E., P.S.**  
FRANKLIN COUNTY ENGINEER  
FRANKLIN COUNTY DRAINAGE ENGINEER

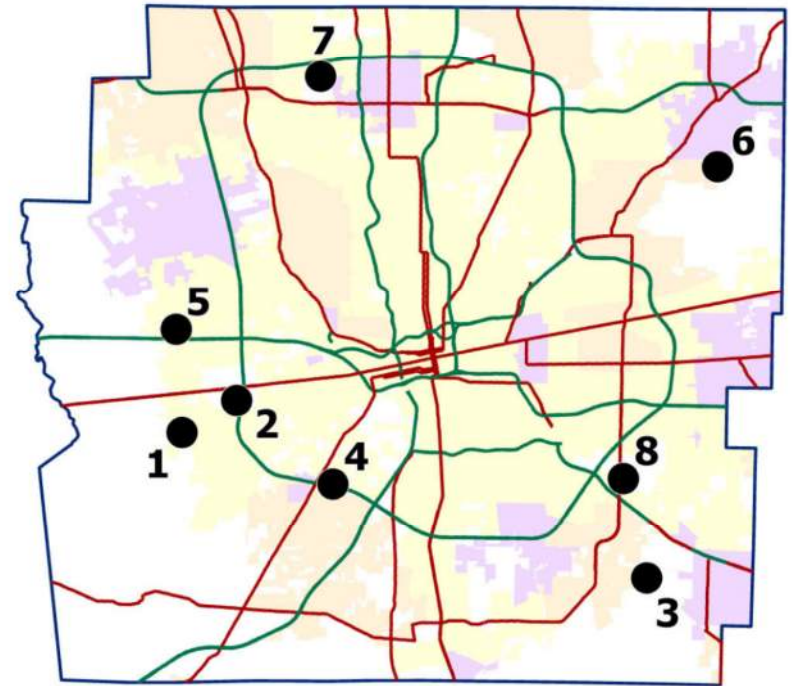




# 2025 Spring Programmatic Consultant Open House

## Transit Supportive Infrastructure Projects

- 1) **Galloway Road**  
(Broad Street to O'Harra Road)
- 2) **Grener Road**  
(West Broad Street to Sullivant Avenue)
- 3) **Groveport Road**  
(Ebright Road/Front Street/Corbett Road to Canal Winchester Corporation Limit)
- 4) **McComb Road**  
(Home Road to Stoneridge Park)
- 5) **Renner Road**  
(Spindler Road to Hilliard & Rome Road)
- 6) **Reynoldsburg-New Albany Road**  
(Clark State Road to Morse Road)  
and **Morse Road**  
(Reynoldsburg-New Albany Road to Havant Drive)
- 7) **Snouffer Road**  
(Bride Water Boulevard to Smoky Row Road)
- 8) **Winchester Pike**  
(Refugee Road to Shannon Road)



**Adam W. Fowler, P.E., P.S.**  
FRANKLIN COUNTY ENGINEER  
FRANKLIN COUNTY DRAINAGE ENGINEER



QUESTIONS?







# THANK YOU INDUSTRY PARTNERS!

