



# WELCOME CONSULTANTS!



# FRANKLIN COUNTY ENGINEER'S 2023 FALL PROGRAMMATIC CONSULTANT OPEN HOUSE



Cornell R. Robertson, P.E., P.S.  
Franklin County Engineer  
[www.franklincountyengineer.org](http://www.franklincountyengineer.org)  
Facebook: @franklincountyengineer





## Franklin County Engineer's 2023 Fall Programmatic Consultant Open House

### Agenda:

1. **Welcome** – *Engineer Robertson*
2. **Engineer's Office Update** – *Fritz Crosier*
3. **Financial Report** – *Brent Welch*
4. **Diversity, Equity, and Inclusion** – *Simone Burley*
5. **Introduction of Teammates**
6. **Project Details** – *Matt Rehfus, Ed Herrick, Jim Ramsey, and Mike Rehfus, Jr.*
7. **Closing Remarks / Q&A**





# Engineer's Office Update



Olentangy River Road 11.40 over Carhart Ditch  
Designed by Fishbeck



# Financial Report



Morse Road at Babbitt Road  
Designed by The Mannik & Smith Group, Inc.



# DIVERSITY, EQUITY & INCLUSION

- The Vision Statement – Paragraph Three, Sentence Three (Procurement).
- The Consultant section of the Franklin County Engineer’s Equitable Business Enterprise Program for Locally Funded Projects.
- FCE EBE Tracking form and reporting subconsultant participation.
- Diversity & Inclusion Department 2022 Snapshot.



**Cornell R. Robertson, P.E., P.S.**  
FRANKLIN COUNTY ENGINEER

Franklin County Engineer’s  
Equitable Business  
Enterprise Program for  
Locally Funded Projects

Franklin County Engineer Cornell R. Robertson, P.E., P.S.

Revised March 4, 2021

**Franklin County Engineer**  
Cornell R. Robertson, P.E., P.S.  
EBE Payment Tracking Form

**Instructions**  
This form is designed to track payments made toward the Project EBE Goal. This form must be submitted with all pay invoices.

**Project Name:** \_\_\_\_\_

**Consultant:** \_\_\_\_\_

Project Goal (%) \_\_\_\_\_ Project Goal (\$) \_\_\_\_\_ Project Award Amount (\$) \_\_\_\_\_

**Date:** \_\_\_\_\_ **Invoice#:** \_\_\_\_\_

EBE Subconsultant Name	Type of Certified Business (DBE, WBE, MBE etc.)	Amount paid on this invoice	Total Amount Paid

Sign of Line \_\_\_\_\_ Name \_\_\_\_\_  
Date of Signature \_\_\_\_\_

## Consultant Selection Process and EBE Participation

A minimum ten percent (10%) EBE participation goal will be established on engineering and design related services agreements that have sub-consulting opportunities, as deemed appropriate by the FCEO. FCEO cannot disqualify a consultant for failing to meet the established EBE goal provided the consultant made good faith efforts to meet the participation goal. The FCEO may place in the advertisement or solicitation for engineering and design related services that the prime consultant must meet the established EBE participation goal or demonstrate good faith efforts to meet it. The firm would be required to demonstrate how it would meet the established EBE goal at the negotiation phase of the procurement process. If during the negotiation phase of the procurement process, work proposed to be performed by EBEs in the response to the solicitation is decreased or eliminated through negotiation of the scope of services, the prime consultant must use good faith efforts in revision of its proposal to provide for the participation of EBEs to meet the established EBE goal. The fact that the prime consultant could perform the work with its own forces does not relieve it from making good faith efforts to meet the established EBE goal. However, if the prime is an EBE, their EBE status can be attributed to the goal. If the selected prime consultant does not meet the goal or demonstrate a good faith effort, the FCEO may terminate negotiations and initiate negotiations with another firm.

**Selection Procedures:** Qualified consultants will be considered and selected for performing work with FCEO based on the policy and procedures outlined in the current edition of the FCEO Consultant Selection Policy.

[Back to Table of Contents](#)





## DIVERSITY & INCLUSION DEPARTMENT

# 2022 SNAPSHOT

### MISSION STATEMENT

The Franklin County Engineer's Office provides for safe and efficient movement of people and goods from place to place by designing, building and maintaining Franklin County's roads, bridges and infrastructure for multiple modes of transportation. We are an agency of action, innovation and collaboration.

## WORKFORCE TEAM

29% of diverse candidates interviewed were hired



99% of FCEO employees received Diversity & Inclusion training

200 employees and 25 departments at the Franklin County Engineer's Office

### BRIDGE THE GAP COMMITTEE ACTIVITIES

12 Activities created to help FCEO employees connect on a professional and personal level. Examples include: Bring Your Child to Work Day and Thanksgiving Dessert Live Auction.

### LUNCH & LEARNS

10 Lunch & Learns held as a way for FCEO employees to learn more about departmental roles and responsibilities, Microsoft Office and various trivia activities.

### DIVERSITY & INCLUSION PRESENTATIONS

85 Presentations given at FCEO staff meetings and other outside Diversity & Inclusion events.

#### EXAMPLES INCLUDE:

- Asian-Pacific American Heritage Month
- Historically Black Colleges & Universities
- Jewish American Heritage Month
- Women's History Month
- Cinco de Mayo
- Native American Heritage Day
- LEARN DEI Conference
- Hindu Holidays: Diwali & Ganesh Chaturthi

### MENTORSHIP PROGRAM

27% of FCEO employees participated in the Mentorship Program which promotes professional and personal growth.

### TOGETHERNESS BOARDS

48 Bulletin boards were displayed at each of our four locations, containing topics surrounding Diversity & Inclusion.

## COMMUNITY OUTREACH & PUBLIC ENGAGEMENT

### ADOPT-A-SCHOOL 240 STUDENTS SERVED

Engagement with an elementary school in an underrepresented community of Franklin County, Ohio, Columbus City School system.

Activities included a reading/tutoring program and a career day at the school where various FCEO departments visited the school to share information about their roles and responsibilities at the agency.

### MEET & GREET WITH MINORITY OWNED BUSINESSES

10 Meetings held to discuss procurement opportunities with the FCEO.

### AREA COMMISSIONS VISITED

3 Area Commissions visited to share the FCEO story and the roles and responsibilities of the agency.

### ENGAGEMENT WITH MINORITY STUDENT ORGANIZATIONS

13 Events facilitated with minority student organizations to foster and connect underrepresented groups to the engineering field.

### OUTREACH EVENTS FACILITATED

16 Outreach events held to engage the residents of Franklin County and offer assistance when needed.



## DIVERSITY & INCLUSION DEPARTMENT



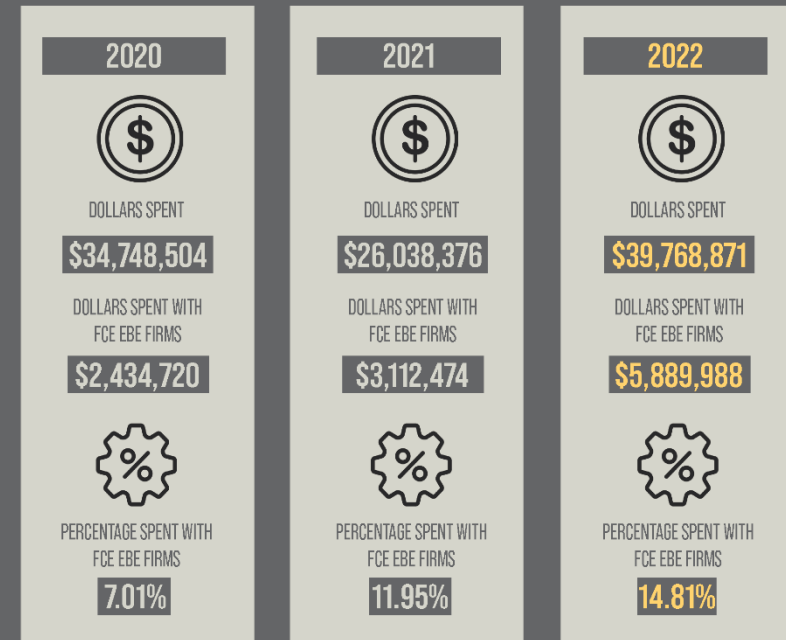
# 2022 SNAPSHOT

### PARAGRAPH THREE - FCEO VISION STATEMENT

The Franklin County Engineer's Office is focused on offering a diverse and inclusive work environment where all employees are supported and have the opportunity to share ideas, to grow, and to succeed. We develop future leaders by providing training and education opportunities. Our team understands the importance of, and is committed to utilizing small and disadvantaged business enterprises through procurement and professional services. We actively pursue public engagement and outreach to underserved populations of Franklin County.

## PROCUREMENT

The FCEO increased spending with FCE EBE firms over the last three years



\* FCE EBE - Franklin County Engineer's Equitable Business Enterprise



# INTRODUCTION OF FCEO TEAMMATES

- Matt Rehfus – Highway Design Engineer
- Ed Herrick – Bridge Engineer
- Jim Ramsey – Riparian and Environmental Engineer
- Mike Rehfus, Jr. – Construction Services Engineer



Norton Road at Grove City Road & Kropp Road  
Designed by 2LMN



2023  
Fall  
Programmatic  
Projects





# JOHNSTOWN ROAD AT 17<sup>TH</sup> AVENUE AND I-670 OFF-RAMP

## Detailed Design

- Existing two-way stop-controlled intersection in Mifflin Township
- Skewed intersection with a history of crashes
- In 2022, intersection was ranked #3 on Franklin County's Unsignalized High-Crash Priority Intersection List
  - 2019-2022 - 19 crashes including 8 injuries
- Successful ODOT Safety (HSIP) application in spring 2023.
  - \$2,000,000 – Construction FY 2027
  - Preferred alternative – Single lane modern roundabout







# WRIGHT ROAD 1.93 OVER PICKERING CREEK

Bridge Improvement Project

- FRA-221-0193
- Simple span rolled steel beams on reinforced concrete cantilever wall abutments
- Built in 1939, Rehabilitated in 1980
- Length = 45'
- Rated – Poor Condition (4A)
- DESIGN BUILD Delivery Decision Process
- DESIGN BUILD Scope Development





# UNDERWATER BRIDGE INSPECTIONS AND COMPLEX BRIDGE LOAD RATING ANALYSIS

- Underwater bridge inspection
  - Prequalified with ODOT
  - Bridge inspection training and refreshers are up to date
  - (Team leader is required to present at the inspection - dive inspector and team leader can be the same person)
  - Complete Appendix F from the Bridge Inspection Manual (Underwater Inspection Procedure Checklist)
  - Complete Appendix J from the Bridge Inspection Manual (Cross Channel Profile Measurements)
- Bridges
  - Smothers Road Bridge over Hoover Reservoir (FRA-20-0273)
  - Hayden Run Road Bridge over Griggs Reservoir(FRA-32-0674)
  - Fishinger Road Bridge over Griggs Reservoir (FRA-52-0046)





## UNDERWATER BRIDGE INSPECTIONS AND COMPLEX BRIDGE LOAD RATING ANALYSIS (CONT.)

- Complex Bridge Load Rating Analysis
  - Dodridge Street 4.48 over Olentangy River (FRA-52-4.48)
  - W. Main Street 3.72 over Alum Creek (FRA-19-3.72)
  - Third Avenue 2.12 over Olentangy River (FRA-3855-2.12)





# PETITION DITCH ENGINEERING SERVICES

## Drainage Improvement Project

- Active Petitions
  - Cole Ditch
    - Watershed – 1,132 Acres
    - Parcels – 385
    - Northeast Franklin County – Jefferson Township
  - Raduege Snyder Ditch
    - Watershed – 901 Acres
    - Parcels – 121
    - Southeast Franklin County – Madison Township
  - Others TBD





# CONSTRUCTION ENGINEERING AND INSPECTION SERVICES

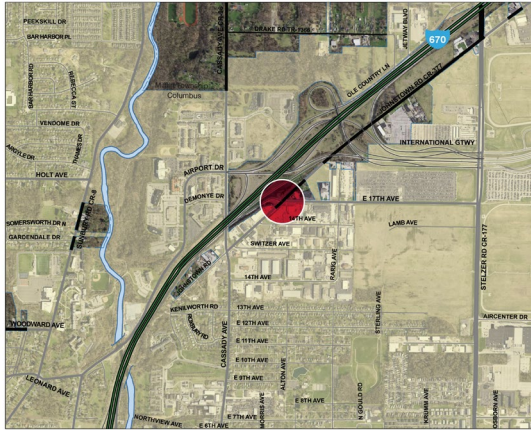
## Project Inspection Team

- Inspect a detailed portion of the work to ensure the work performed is in conformance with the plans and specifications.
- Calls to the attention of the Franklin County Construction Services Engineer work issues that are outside the scope of the contract plans or specifications, or when the contractor employs or proposes to employ non-standard work methods.
- Authors a daily diary of measurements, calculation quantities, equipment, crews, work hours, and documents activities performed utilizing e-Builder (construction project management software).
- Enters material submittals into the project bill of materials and verifies materials conform to specification requirements.
- Documents daily work activity with pictures.
- Records variations from project plans in as-built drawings.

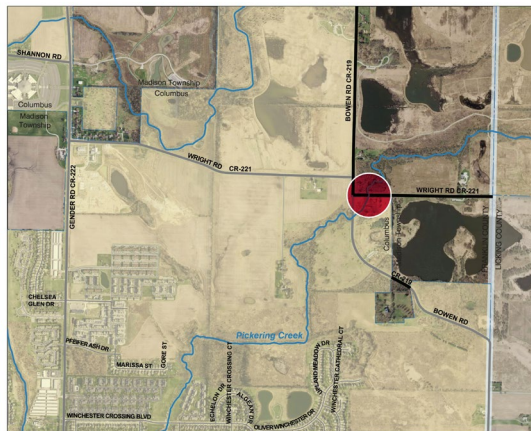




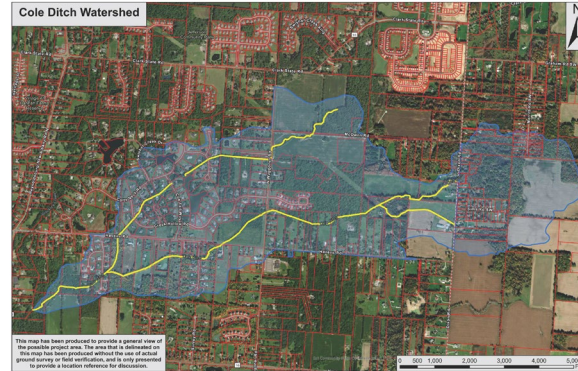
# 2023 Fall Programmatic Consultant Open House



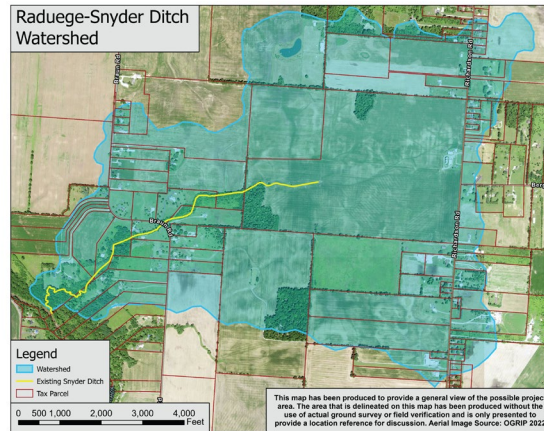
**Johnstown Road at 17th Avenue  
and I-670 Off-Ramp**



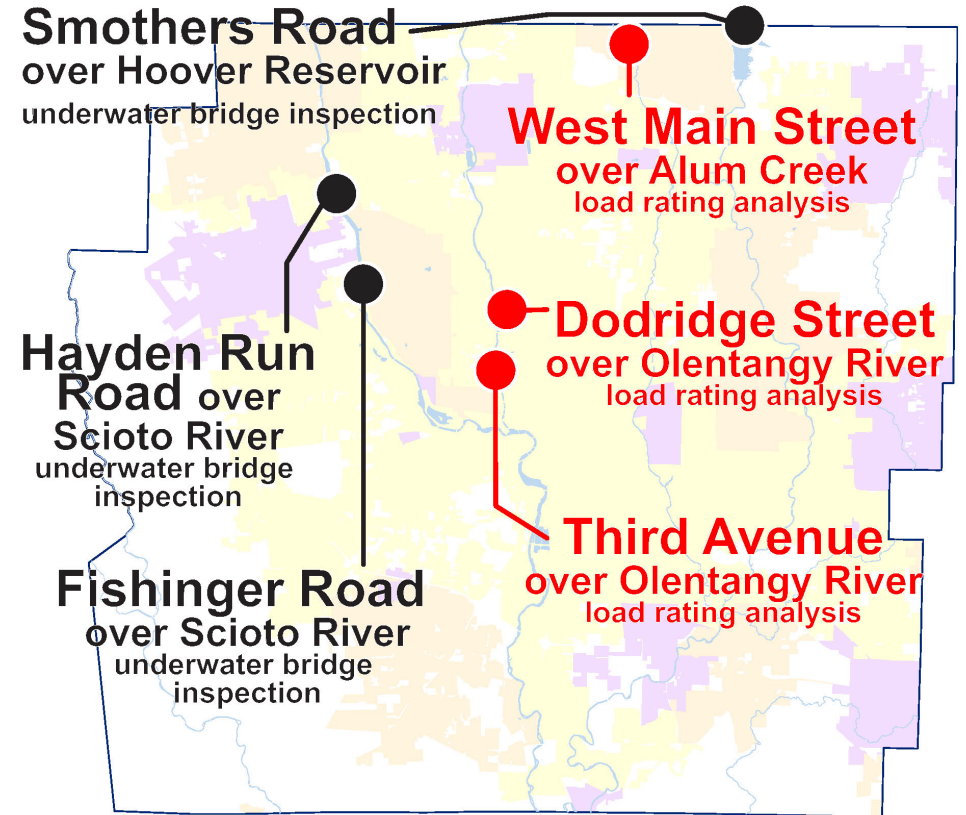
**Wright Road 1.93  
over Pickering Creek**



**Petition Ditch Engineering Services  
Cole Ditch Watershed**



**Petition Ditch Engineering Services  
Raduege-Snyder Ditch Watershed**



**Underwater Bridge Inspections and  
Complex Bridge Load Ratings Analysis**

## Other Projects

Construction Engineering and Inspection Services



**Cornell R. Robertson, P.E., P.S.**

FRANKLIN COUNTY ENGINEER  
FRANKLIN COUNTY DRAINAGE ENGINEER







# QUESTIONS?







# THANK YOU CONSULTANTS!

