

FRANKLIN COUNTY ENGINEER'S 2020 FALL CONSULTANT SELECTION OPEN HOUSE



Cornell R. Robertson, P.E., P.S.
Franklin County Engineer
www.franklincountyengineer.org
Facebook: @franklincountyengineer

**THANK YOU FOR ATTENDING! WE
WILL GET STARTED AT 2:00 P.M.**

- Please ask questions via the Q&A button on the menu bar. We will answer questions at the end of the presentation.
- Attendees are muted for this event.
- We have disabled the chat function for this event.
- You can move the speaker window during the presentation.
- Please answer the survey when exiting the event.

Franklin County Engineer's 2020 Fall Consultant Selection Open House

Agenda:

1. **Welcome** – *Engineer Robertson*
2. **Financial Update** – *Brent Welch*
3. **Engineer's Office Update** – *Fritz Crosier*
4. **Diversity, Inclusion, and Equity** – *Simone Burley*
5. **Introduction of Teammates** – *Barb Cox*
6. **Project Details** – *Brad Foster, Ed Herrick, Jim Ramsey, and Scott Roe*
7. **Closing Remarks / Q&A** – *Engineer Robertson*



FCEO Financial Report



Engineer's Office Update



DIVERSITY, INCLUSION, & EQUITY

- Three Primary Pillars
 - Workforce Diversity
 - Consultant/Contractor/Vendor/Supplier Diversity
 - Outreach to Diverse and Underserved Communities
- Vision Statement – Paragraph Three
- Franklin County Engineer's Equitable Business Enterprise Program for Locally Funded Projects
- Franklin County Engineer's Antiracism & Equity Program
- Employee Investment Program



Cornell R. Robertson, P.E., P.S.
FRANKLIN COUNTY ENGINEER

FRANKLIN COUNTY
ENGINEER'S ANTIRACISM
& EQUITY PROGRAM

June 30, 2020

The Franklin County Engineer's Office denounces racism in all forms. More needs to be done now. We pledge to listen and continue to learn more from those affected by racism, and we will strive to promote meaningful and lasting change in our organization, Franklin County, and society at large.



Cornell R. Robertson, P.E., P.S.
FRANKLIN COUNTY ENGINEER



EMPLOYEE INVESTMENT PROGRAM



Cornell R. Robertson, P.E., P.S.
FRANKLIN COUNTY ENGINEER

Franklin County Engineer's
Equitable Business
Enterprise Program for
Locally Funded Projects

Franklin County Engineer Cornell R. Robertson, P.E., P.S.

May 4, 2020

INTRODUCTION OF TEAMMATES

- Barb Cox – Planning & Programming Engineer
- Brad Foster – Highway Design Engineer
- Ed Herrick – Bridge Design Engineer
- Jim Ramsey – Assistant Highway Design Engineer
- James Jewell – Chief Deputy of Operations



2020 Fall Projects



ROHR ROAD CORRIDOR STUDY (LOCKBOURNE ROAD TO ALUM CREEK DRIVE)

Preliminary Engineering Study

- Located in southeast Franklin County in Hamilton Township
- Multi-jurisdictional corridor
 - Franklin County
 - Village of Obetz
 - City of Columbus
- Multiple Intersections
 - Lockbourne Road
 - Bixby Road
 - Creekside Parkway
 - Shook Road
- Two bridges
 - Cattle path bridge (Between Bixby Road and Creekside Parkway)
 - CSX and Norfolk Southern – Will require a Service Life Analysis
 - Constructed in 1988
- Rickenbacker Area
 - Warehousing expanding along corridor



Rohr Road (looking east from Bixby Road)



Rohr Road (looking west from Bixby Road)





Rohr Road @ Shook Road Intersection (looking west)



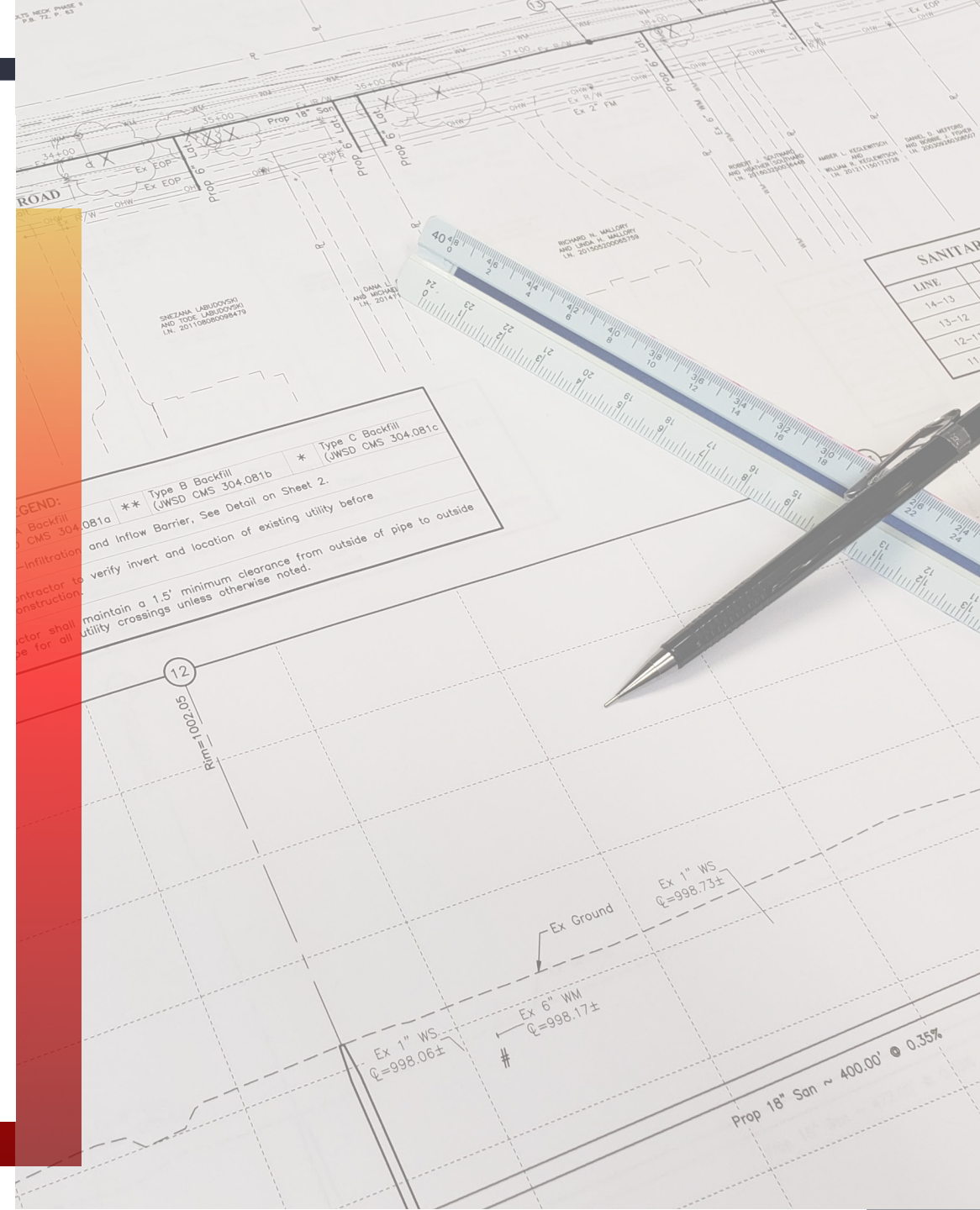
Rohr Road @ Shook Road Intersection (looking east)



GENERAL ENGINEERING SERVICES

On - Call Engineering

- Assist County Engineer's staff on miscellaneous, yet to be determined tasks including, but not limited to:
 - Township Projects
 - Drainage Projects
 - Geo-technical Investigations
 - Construction Administration



ALTON & DARBY CREEK ROAD 1.88 OVER CLOVER GROFF RUN

Bridge Improvement Project

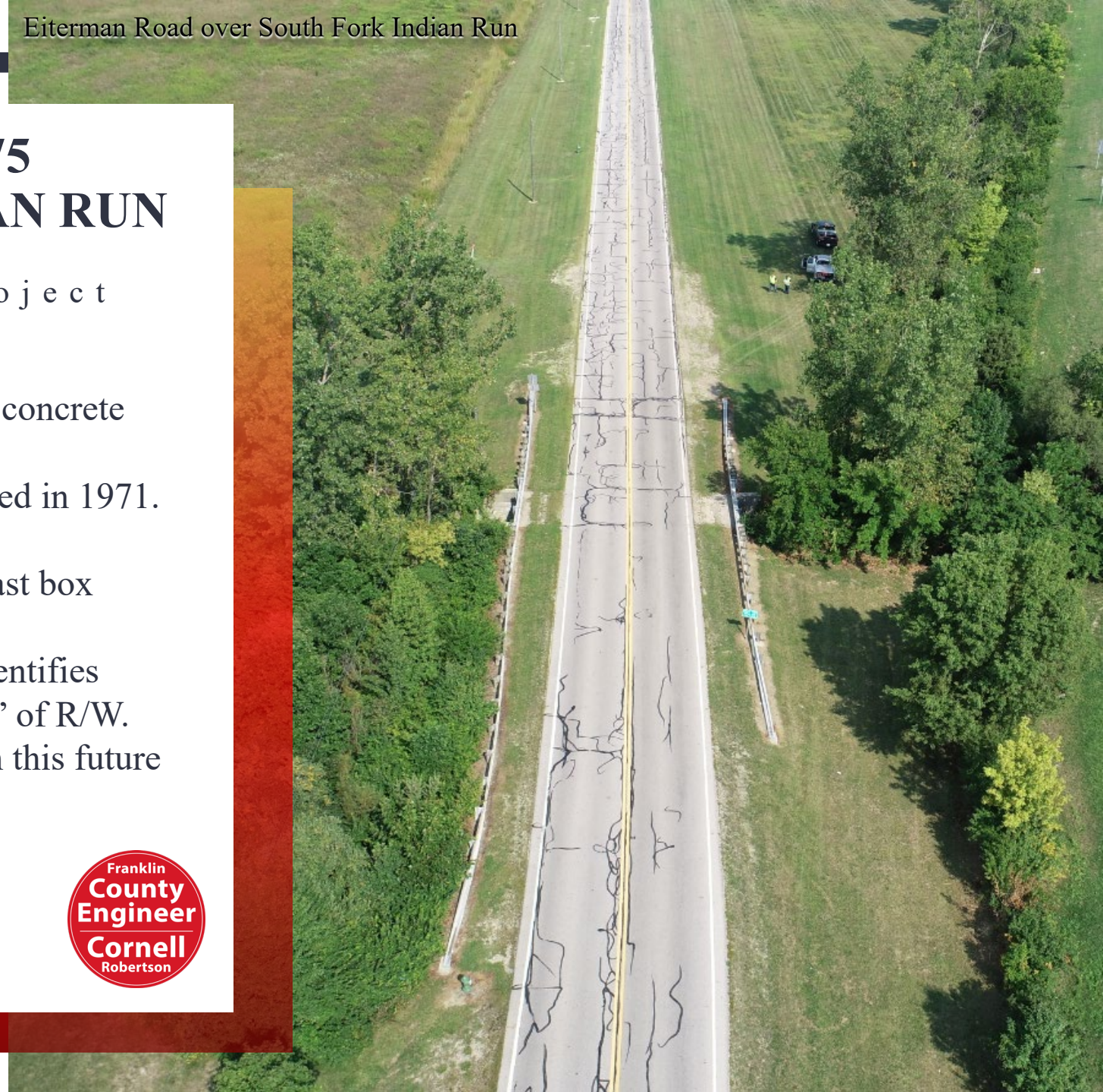
- PRA-C0272-1.88
- Single span, 20 foot, non-composite, box beam structure on concrete abutments.
- The structure was built in 1939 and widened/rehabilitated with a box beam superstructure in 1974.
- The structure is currently rated a “5”.
- The structure is to be designed to accommodate a widened roadway including a SBLT for the Feder Road intersection.
- Investigate the need for pedestrian facilities



EITERMAN ROAD 0.75 OVER SOUTH FORK INDIAN RUN

Bridge Improvement Project

- WAS-C0041-0.75
- Single span, 15 foot, cast-in-place slab on concrete abutments.
- The structure was built in 1941 and widened in 1971.
- The structure is currently rated a “4”.
- The structure will be replaced with a precast box culvert or arch.
- The City of Dublin’s thoroughfare plan identifies Eiterman Road as a collector road with 70’ of R/W. The new culvert will be designed to match this future build-out.





DRAINAGE IMPROVEMENT STUDY 2020

Drainage Improvement Projects

- Grener Ditch (Prairie Township)
 - The Grener, Richards, Maier watershed is an urbanized watershed developed prior to stormwater detention requirements. This study seeks relief to flashy conditions in the watershed and erosion issues. Possible solutions might include a regional detention facility, redesign and/or rerouting of the drainage system.

- Woodrow Ditch (Franklin Township) near Greenlawn Cemetery
 - The Woodrow watershed is an urbanized watershed developed prior to stormwater detention requirements. This study seeks relief to severe flooding of homes, private property, and Greenlawn Cemetery. Possible solutions might include regional detention, redesign and or rerouting the drainage system.



Grener Ditch (Prairie Township)

Woodrow Ditch (Franklin Township) near Greenlawn Cemetery

CONSTRUCTION INSPECTION SERVICES

ODOT Prequalified Project Inspector

- Inspect a detailed portion of the work to ensure the work performed is in conformance with the plans and specifications.
- Calls to the attention of the Franklin County Design Construction Engineer work issues that are outside the scope of the contract plans or specifications, or when the contractor employs or proposes to employ non-standard work methods.
- Authors a daily diary of measurements, calculation quantities, equipment, crews, work hours, and documents activities performed.
- Enters material submittals into the project bill of materials and verifies materials conform to specification requirements.
- Documents daily work activity with pictures.
- Records variations from project plans in as- built drawings.



