

FRANKLIN COUNTY ENGINEER'S OFFICE 2019 SPRING PROJECTS OPEN HOUSE

Cornell R. Robertson, P.E., P.S.
Franklin County Engineer
www.franklincountyengineer.org
Facebook: @franklincountyengineer



Franklin County Engineer's Office 2019 Spring Project Open House

Overview:

1. Introduction
2. Diversity & Inclusion
3. Project Details
4. Questions & Answers
5. Closing Remarks



Introduction



Diversity & Inclusion



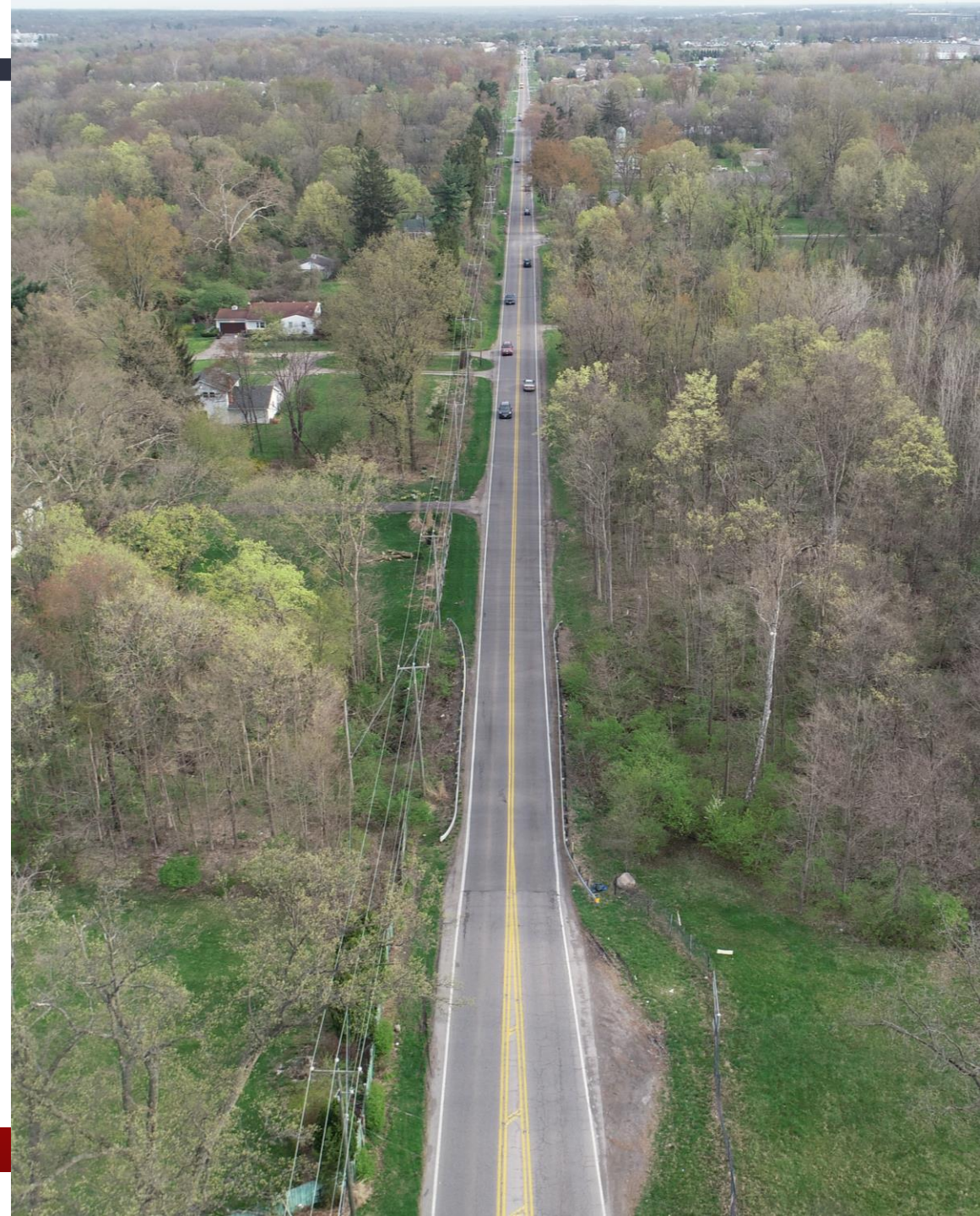
2019 Spring Projects

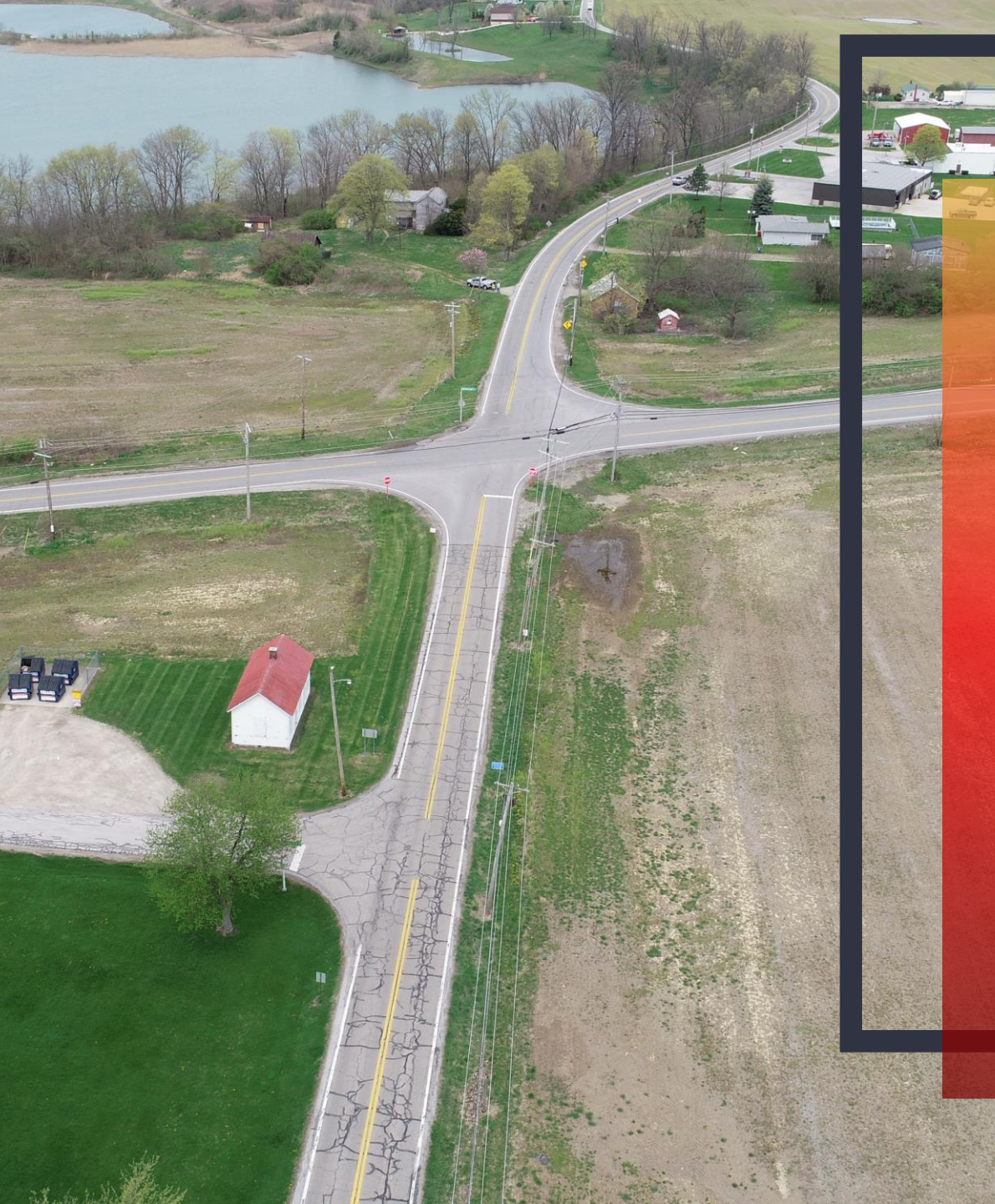


CASSADY AVENUE FROM I-670 TO AGLER ROAD

Corridor Improvement Project

- Located in northeast Franklin County in Mifflin Township
- Multi-jurisdictional corridor
 - Franklin County
 - City of Columbus
- Safety Review and Operational Analysis Summary performed on behalf of the City of Columbus in 2017
 - 2014-2016 – 48 crashes, 14 injuries, 1 fatality
 - Study recommends intersection improvements along corridor as well as pedestrian infrastructure upgrades.
- Fatal pedestrian crash in December 2018
 - Within unincorporated portion of roadway





STATE ROUTE 317 AT LOCKBOURNE ROAD

Intersection Improvement Project

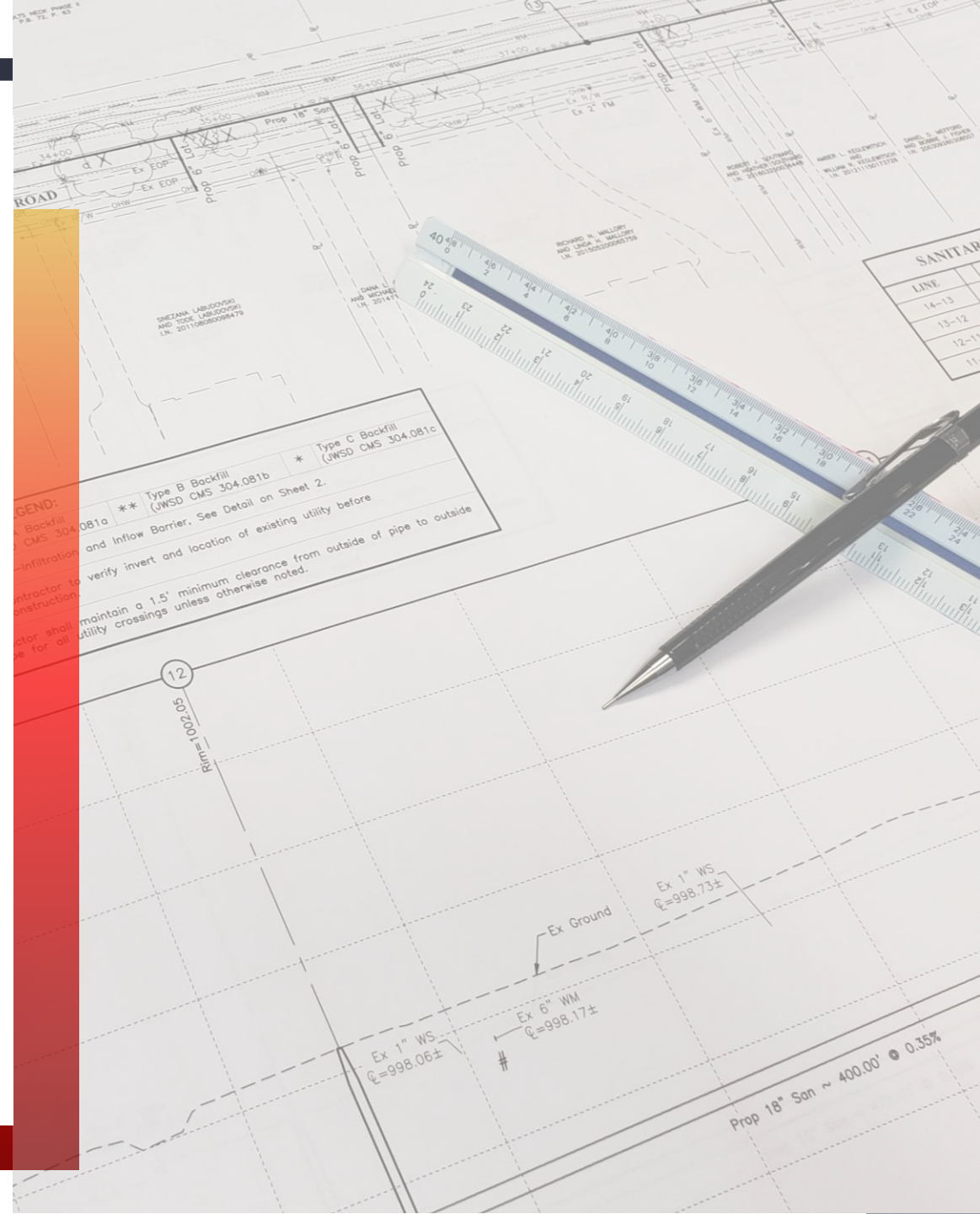
- Located in southeast Franklin County in Hamilton Township
- Collaborative project between Franklin County, ODOT, and Private Developer
- ODOT maintained intersection. Franklin County jurisdiction on north and south approaches.
- Spring 2019 ODOT Safety Application
 - 2015-2017 – 11 crashes, 3 injuries
 - Fatal vehicular crash at intersection in January 2019
 - Study recommends installation of modern roundabout.



GENERAL ENGINEERING SERVICES

On - Call Engineering

- Assist County Engineer's staff on miscellaneous, yet to be determined tasks including, but not limited to:
 - Township Projects
 - Drainage Projects
 - Geo-technical Investigations
 - Construction Administration





REESE ROAD 0.23 OVER BIG WALNUT CREEK

Bridge Improvement Project

- HAM-C0131-0.23
- Four span, 223 foot, box beam structure on a concrete pier and stone abutments. The CIP approach spans are supported on buried capped piles.
- The structure was built in 1909 and rehabilitated in 1974.
- The structure is currently rated a “5”.
- Channel pier and backspan piles will remain.
- Original stone abutments will remain, but need rehabilitation (possibly replace deteriorated wingwalls with sandstone available at FCEO).
- Replace box beams with salvaged steel beams from Trabue Road over NSRR (Buckeye Rail Yard).
- CIP concrete approach spans to potentially remain.





SIMPLIFIED CULVERT PROJECT #1

Culvert Improvement Projects

- Hoover Road 2.04 over tributary of Grant Run
 - JAC-C0262-2.04
 - Single span, 15 foot, cast-in-place slab on concrete abutments.
 - Date of construction is 1916 and was rehabilitated in 1939.
 - Structure is currently rated a “4”.

- Schleppi Road 0.97 over tributary of Rocky Fork Creek
 - PLA-C0191-0.97
 - Single span, 10 foot, cast-in-place slab on concrete abutments.
 - Date of construction is 1928 and extensions were added in 1983.
 - Structure is currently rated a “4”.



Hoover Road 2.04 over tributary of Grant Run



Schleppi Road 0.97 over tributary of Rocky Fork Creek



Borror 0.11 over Tributary of Strader Ditch



Hempstead 1.29 over Tributary of Spring Run



SIMPLIFIED CULVERT PROJECT #2

Culvert Improvement Projects

- Borror 0.11 over Tributary of Strader Ditch
 - JAC-T0266-0.11
 - Single span, 12 foot, cast-in-place slab on concrete abutments.
 - Date of construction is 1942 and was rehabilitated in 1987.
 - Structure is currently rated a “4”.

- Hempstead 1.29 over Tributary of Spring Run
 - BLE-C0184-1.29
 - Single span, 16 foot, precast deck slab structure on stone abutments.
 - Date of construction is 1939 and was rehabilitated in 1985.
 - Structure is currently rated a “5”.



MURNAN ROAD DRAINAGE IMPROVEMENT

Drainage Improvement Project

- Approximately 4000'
- Flowing east from Murnan Rd. and Kuhlwein Rd. to Hamilton Run.
- Hellbranch/Darby Creek Watershed
- Passes through two environmentally funded conservation areas
- Failed road drainage outlet is flooding homes and HSTS's

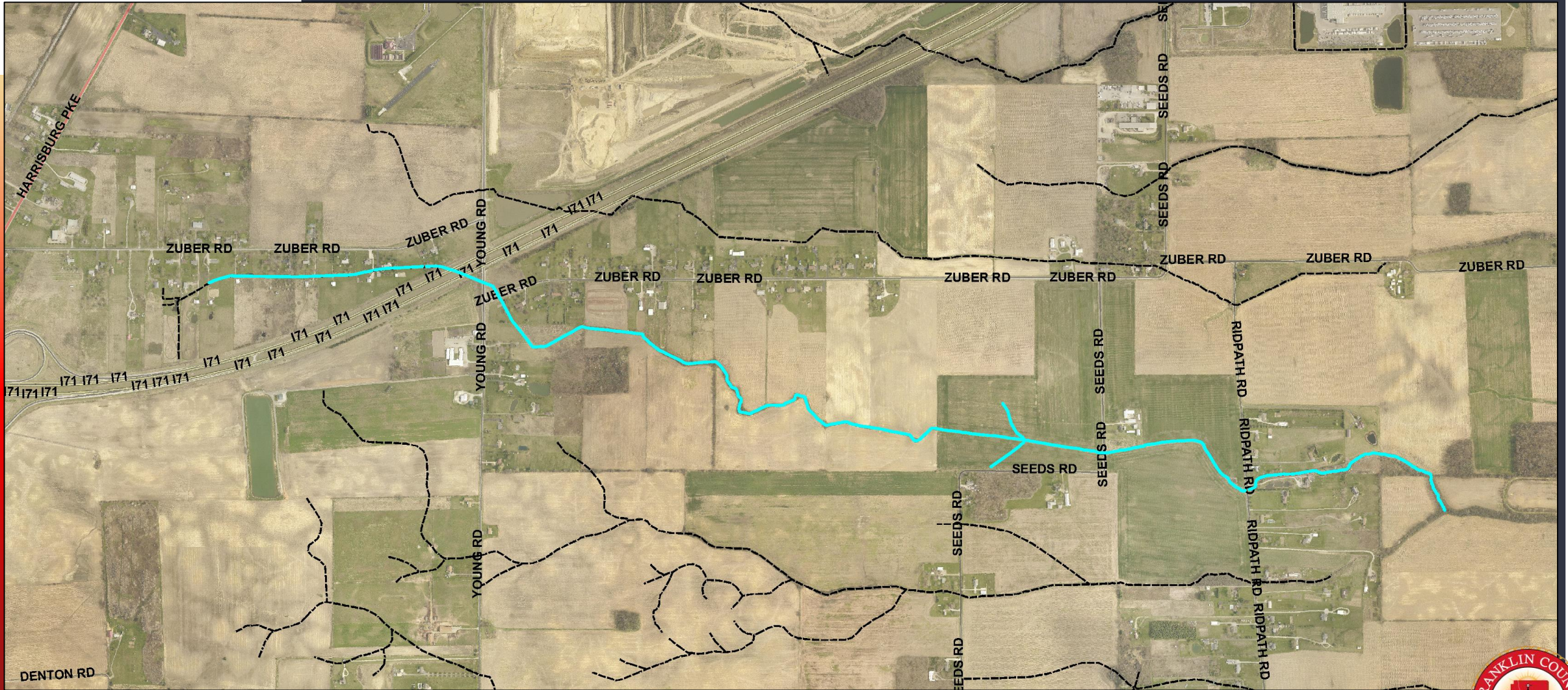


ZUBER ROAD/PLUM RUN DRAINAGE IMPROVEMENTS

Drainage Improvement Project

- Approximately 3 mile long drainage system
- Approximately 3400' west of Young Road flowing east crossing I-71, Young Rd., Seeds Rd. and Ridpath Rd to approximately 2500' east of Ridpath Rd.
- Drainage systems previously constructed through county ditch petitions
- Evaluate optimum drainage design with existing road culverts
- Failed road drainage outlet is flooding homes and HSTS's





ASSET INVENTORY COLLECTION PROJECT

Asset Management Project

- Spatially located FCEO maintained field assets, including, but not limited to:
 - Road signage
 - Striping
 - Curb Inlets
 - Manholes
 - Guardrail
 - Traffic Signals & Associated Equipment
 - Signal heads, strain poles, and controller cabinets
 - School Zone Flashers
- Provide a photo of each asset
- Import the information into the DTS VUEWorks software
- Ensure existing assets already in the system are not overwritten.





QUESTIONS?





THANK YOU CONSULTANTS!



HINKLE REAL ESTATE ADVISORS, INC.