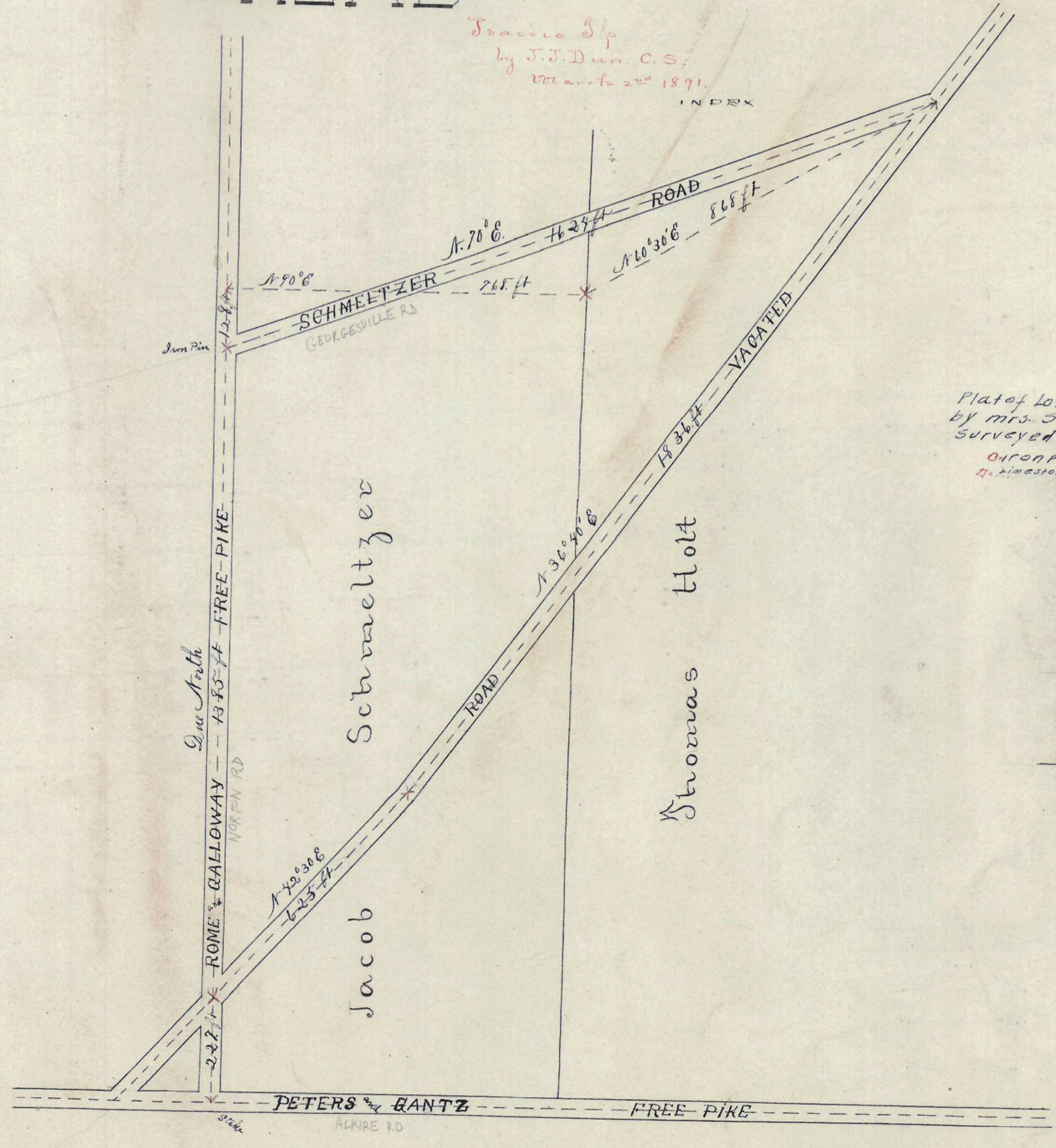


PLAT OF THE SCHMELTZER ROAD

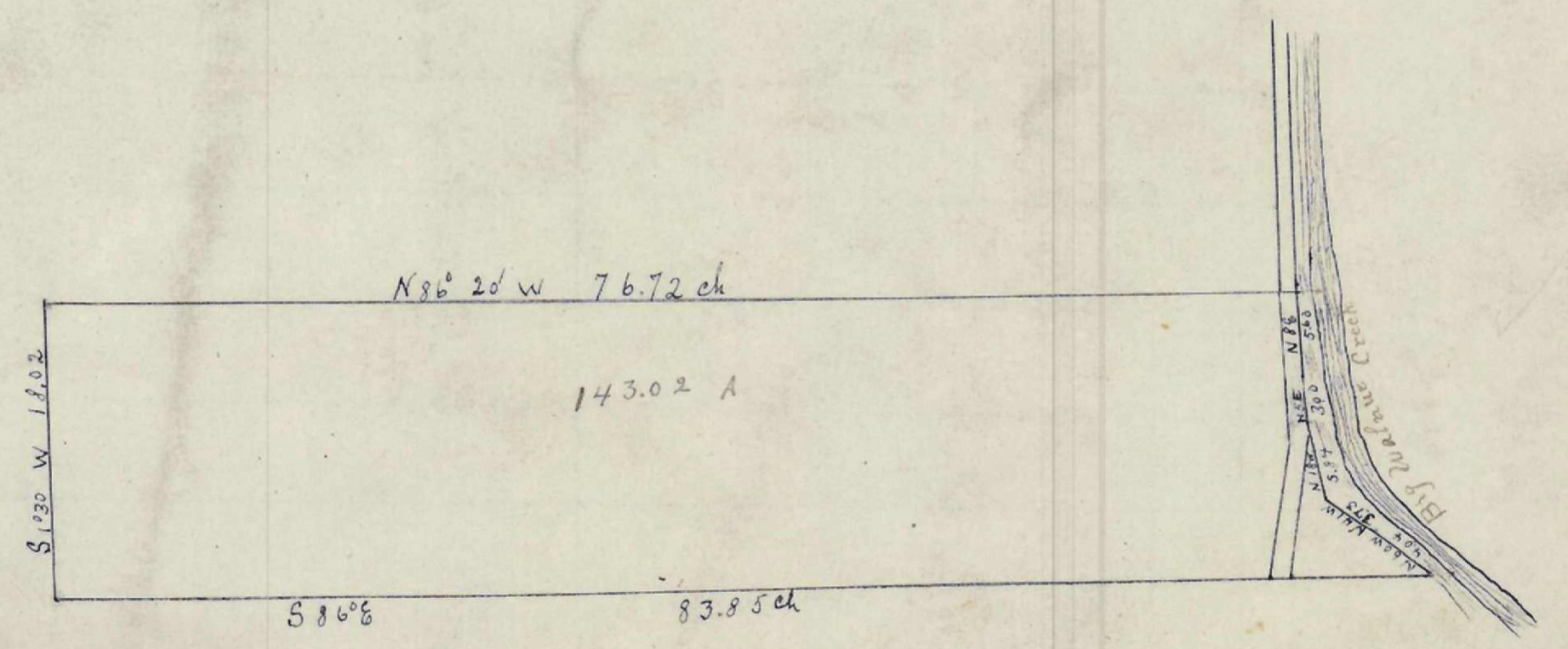
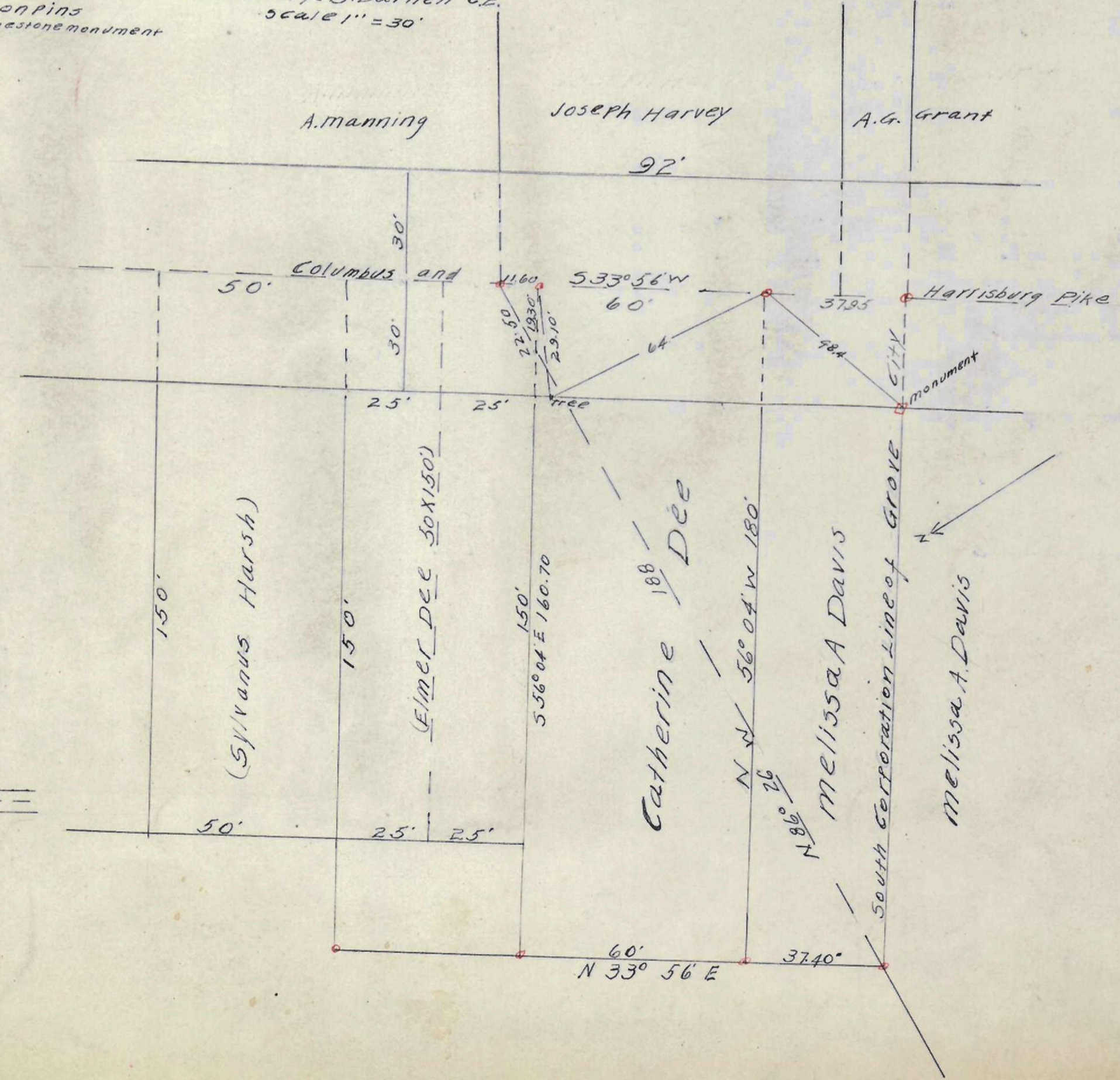
Transcribed by J.J. Dun, C.S. March 2nd 1891 INDEX



Plat Showing Lands transferred by Joseph M. Briggs to His Heirs 1891



Plat of Lot Sold to Mrs. Catherine Dee by Mrs. Susan Harsh and Mrs. Melissa A. Davis Surveyed April 5th 1885. George B. Darnell C.E. Scale 1" = 30' on ground



PLAT OF DAVID STYLGERS FARM MIFFLIN TP. FRANKLIN CO. SURVEYED BY JOHN J. DUN COUNTY SURVEYOR PER S.H. MARTIN ASSISTANT MARCH 11th 1891 INDEX