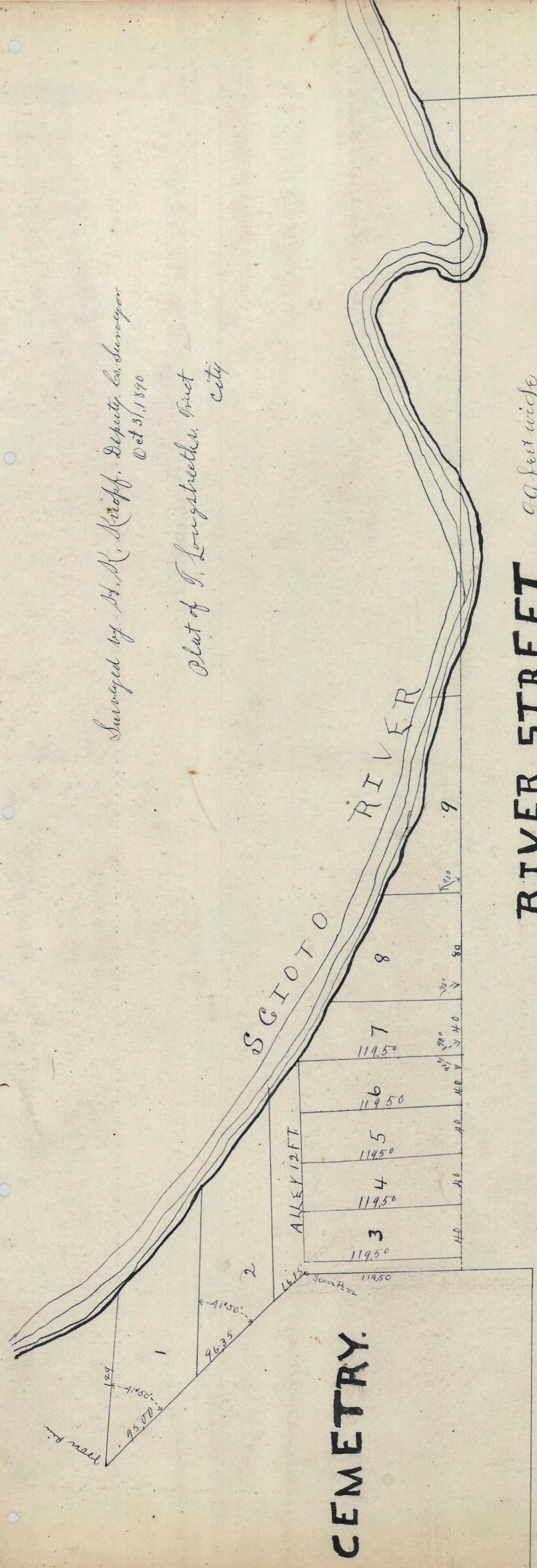


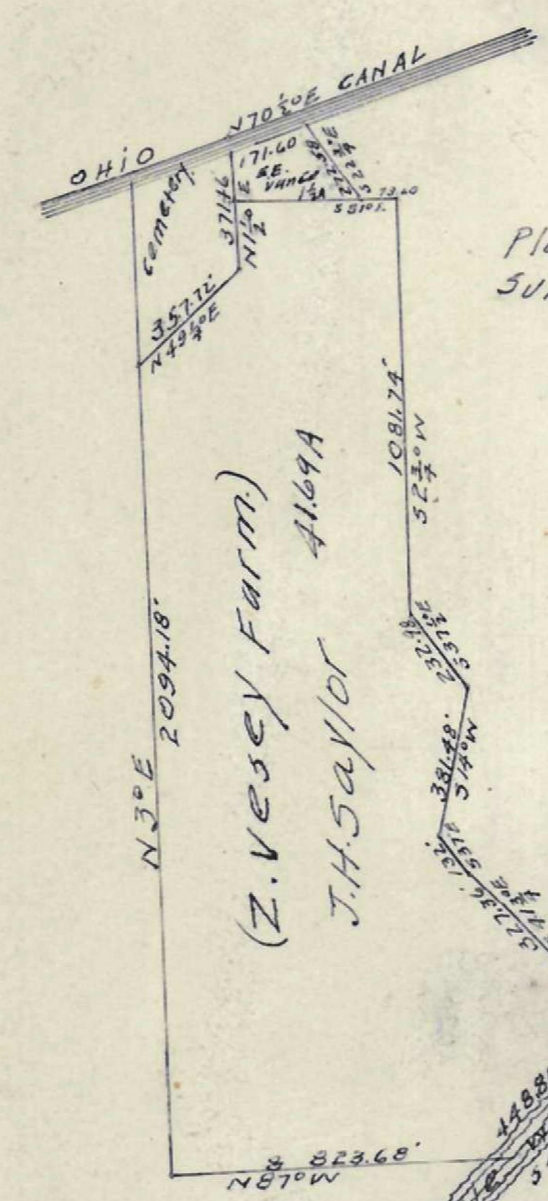
Surveyed by H. H. Knapp, Deputy Commissioner
Oct 31, 1890

Plat of T. Longstrecker tract
City



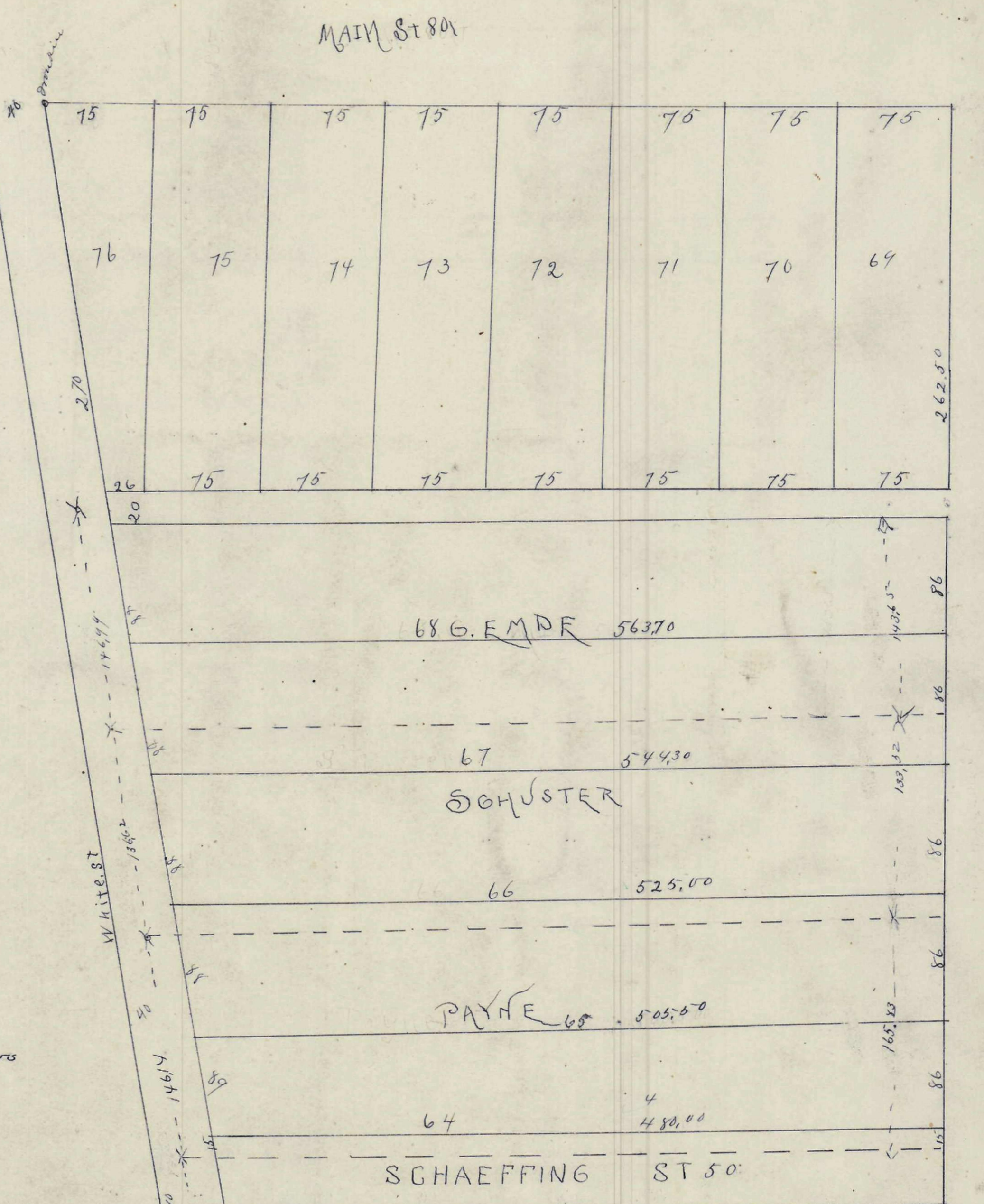
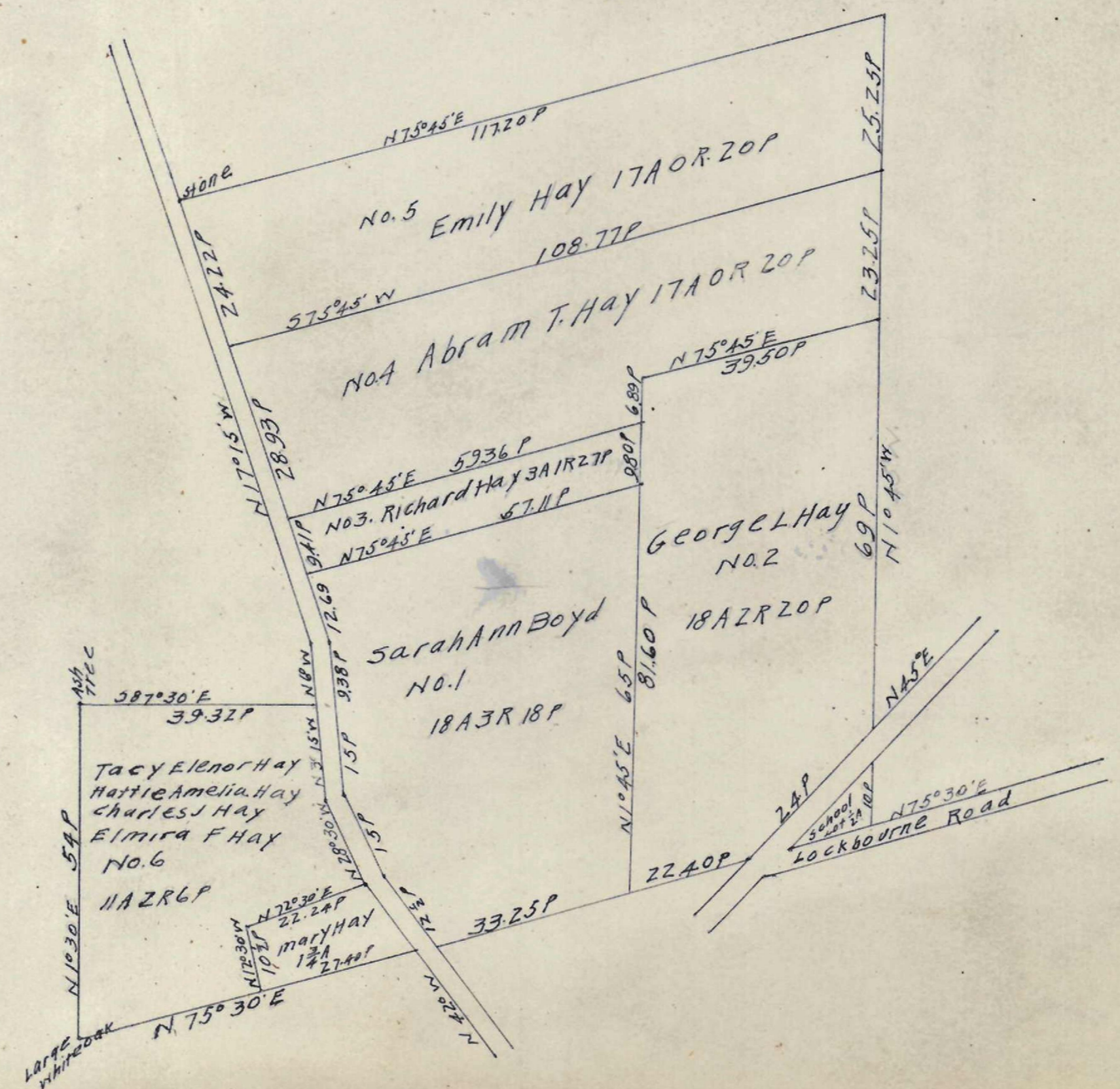
RIVER STREET 99 feet wide

SANDUSKY STREET



Plat of the Vessey farm
Surveyed October 13 1890
John J. Dun County Surveyor
Walter Braun Deputy
Madison Township Franklin County Ohio

Plat of Lands partitioned
among the heirs of Edward Hay Decd
situate in Pleasant Township Franklin County Ohio
Surveyed by the direction of the Commissioners
in this case by W. W. Pollard
June 13th 1873



EMDE, SCHUSTER, PAYNE TRACT
Surveyed by F. E. FEE, D.C.S. OCT. 21, 1890.

INDEX