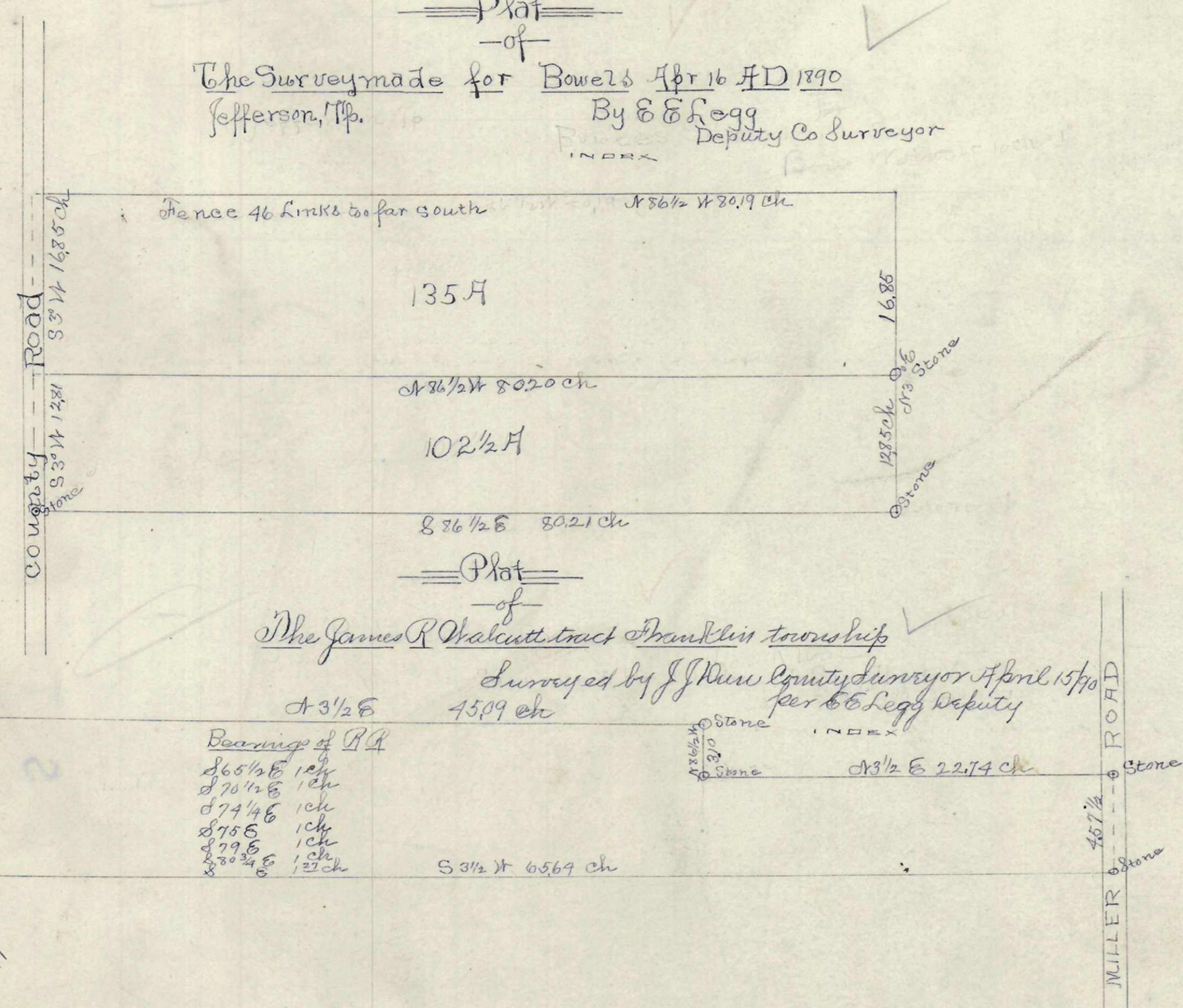
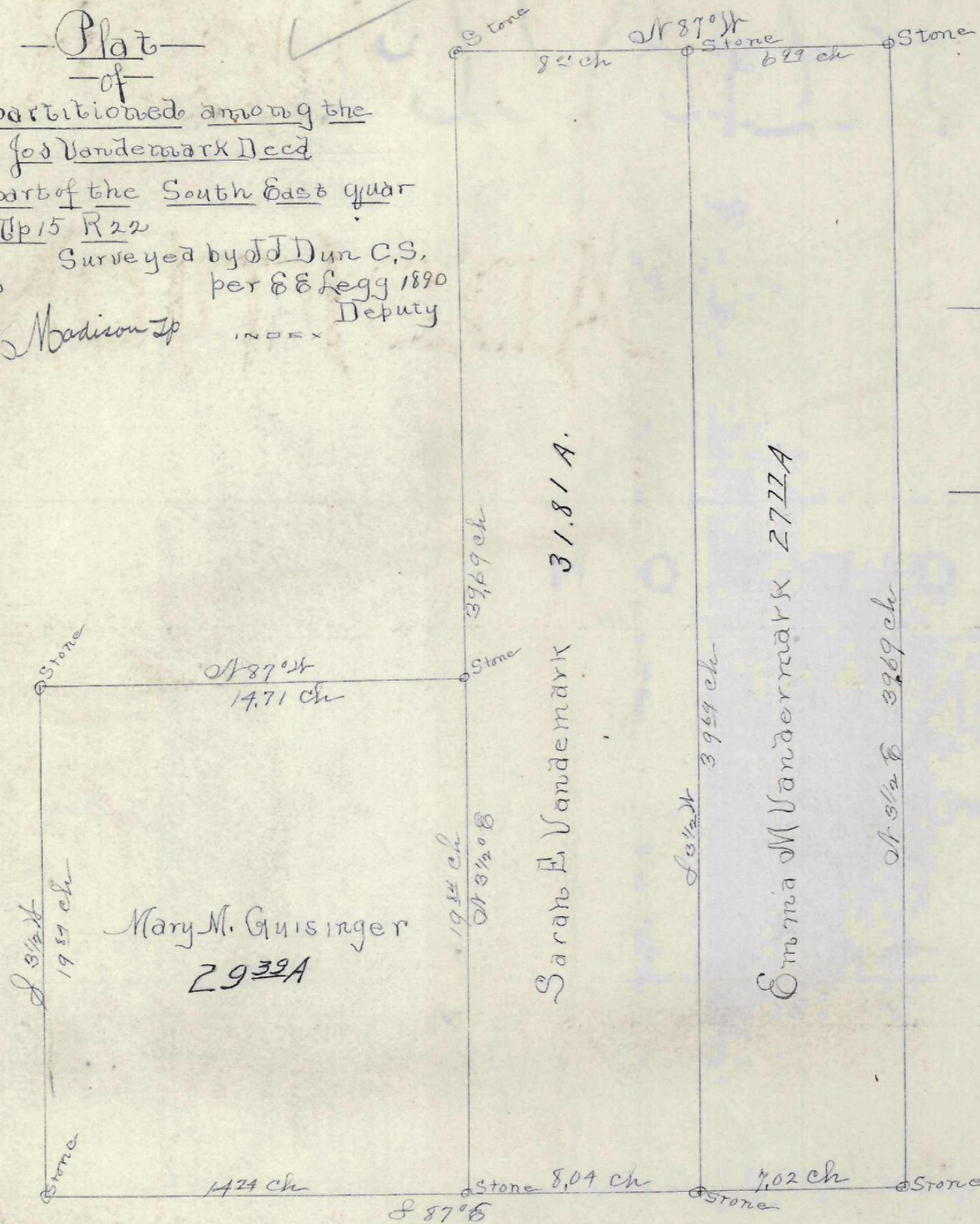


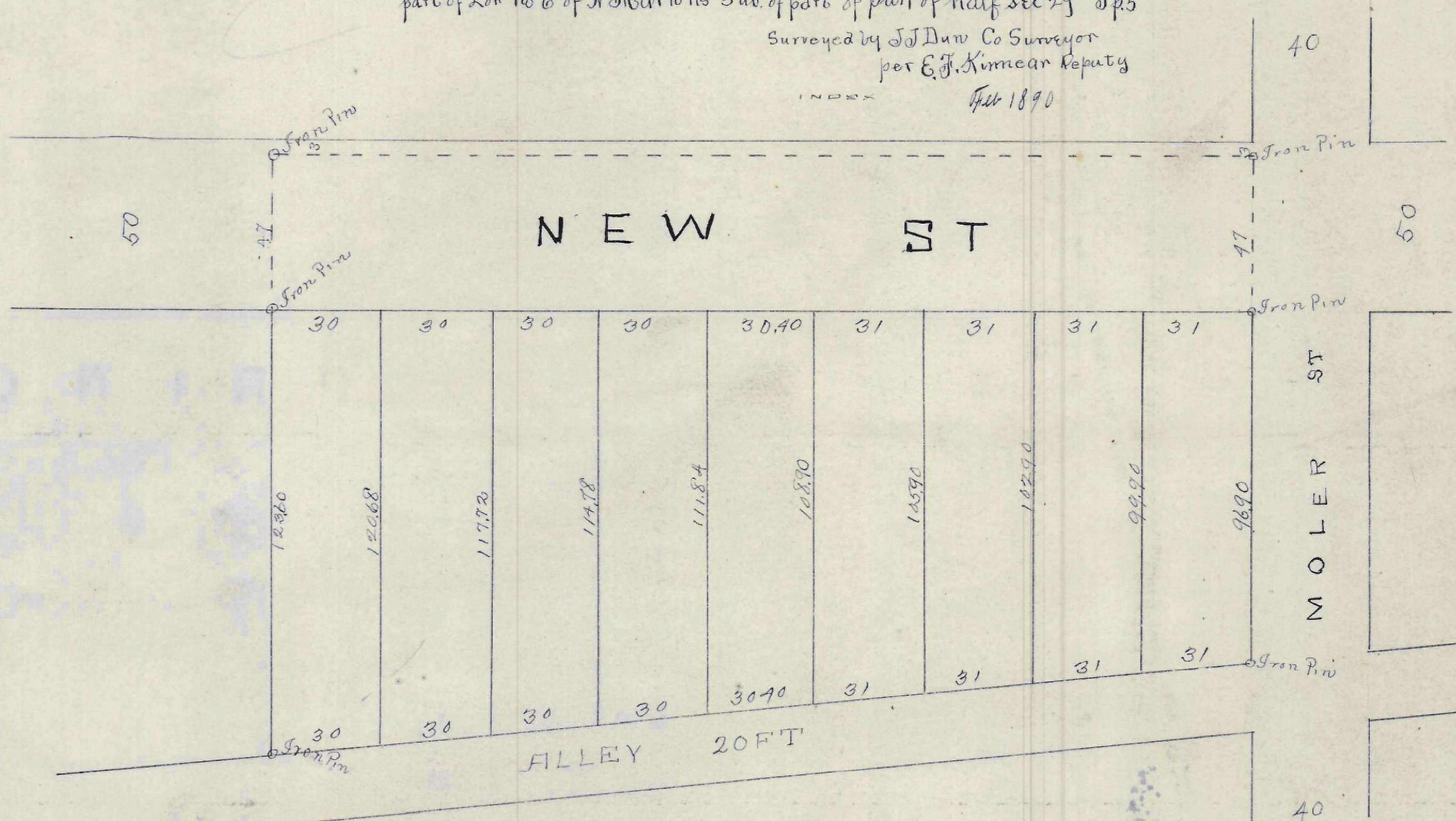
Plat
of
The Survey made for Bowers Apr 16 AD 1890
Jefferson, Twp.
By E. E. Legg
Deputy Co Surveyor



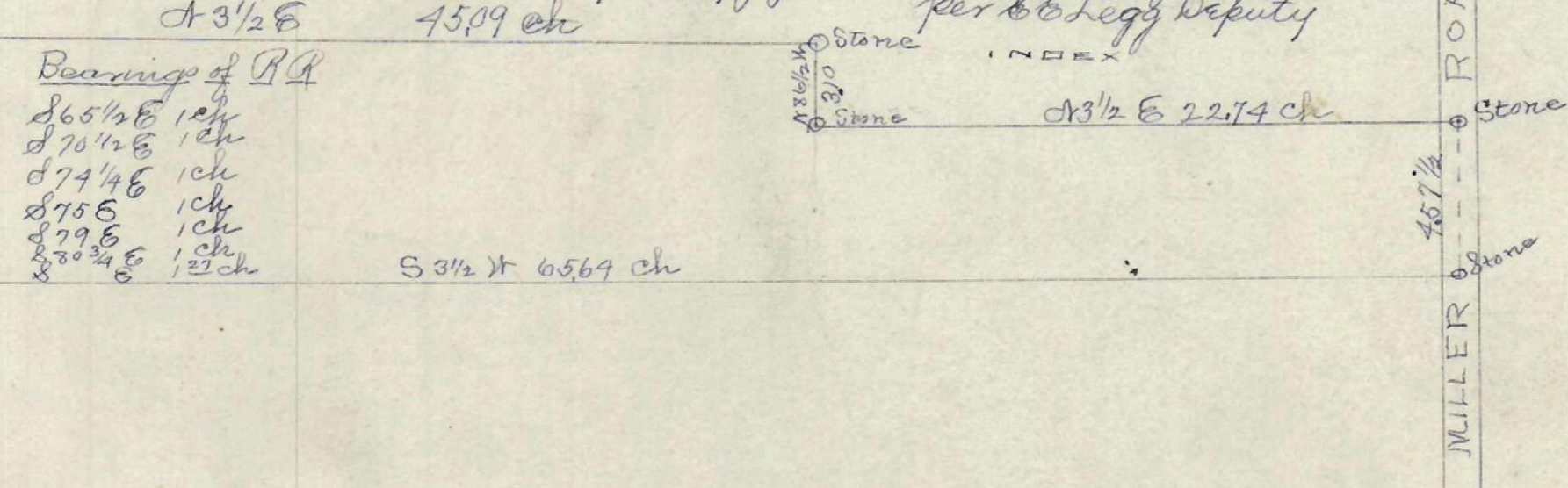
Plat
of
Land partitioned among the
Heirs of Jod Vandermark Deed
Being a part of the South East quar-
ter of Sec 6 Tp 15 R 22
Surveyed by J. D. Dun, C.S.
per E. E. Legg 1890
Madison Twp.



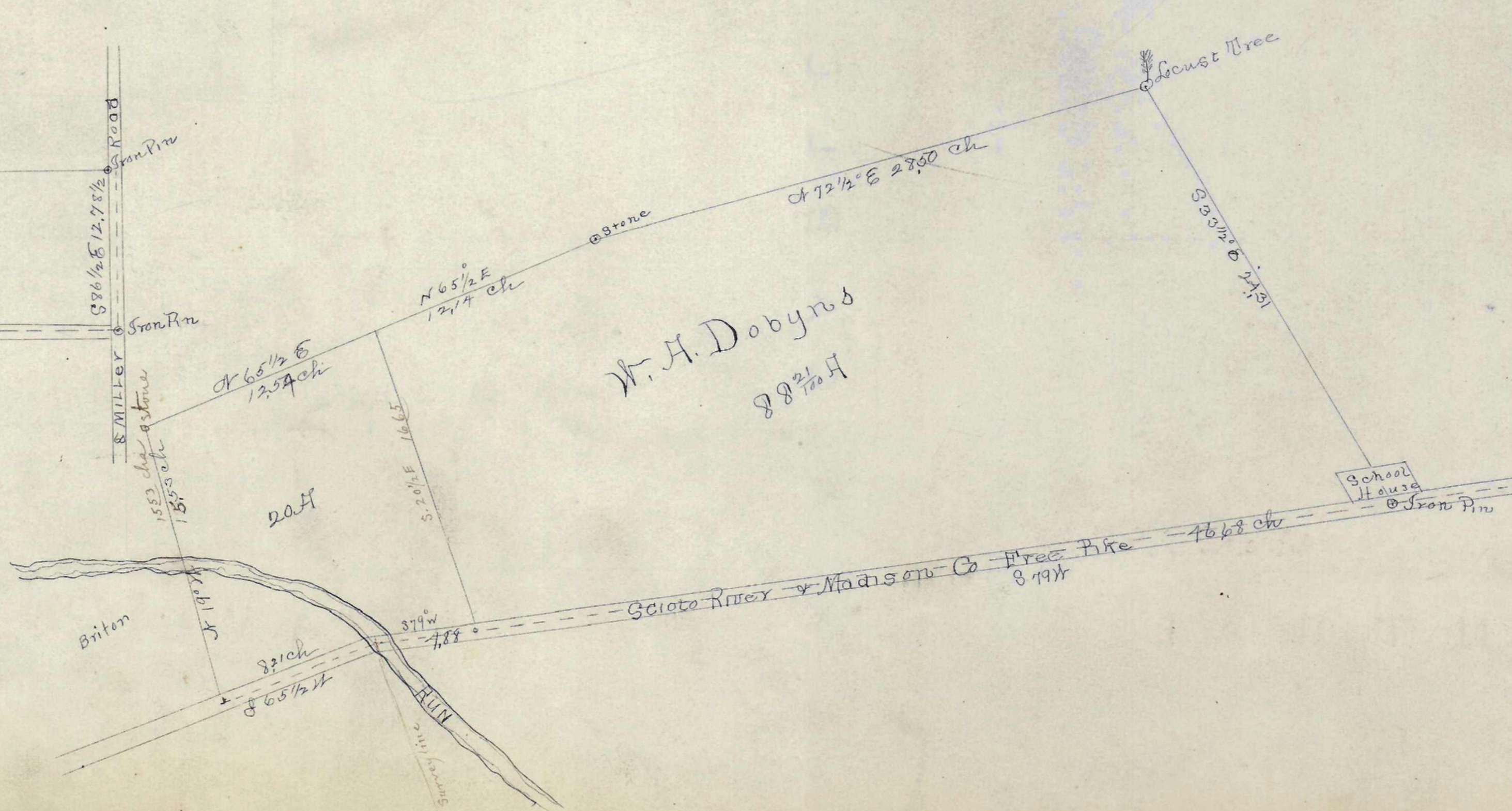
Plat
of
Bonner's Subdivision of
part of Lot No 6 of Marion's sub. of part of part of half sec 29 T 25
Surveyed by J. D. Dun Co Surveyor
per E. F. Kimear Deputy
Apr 1890



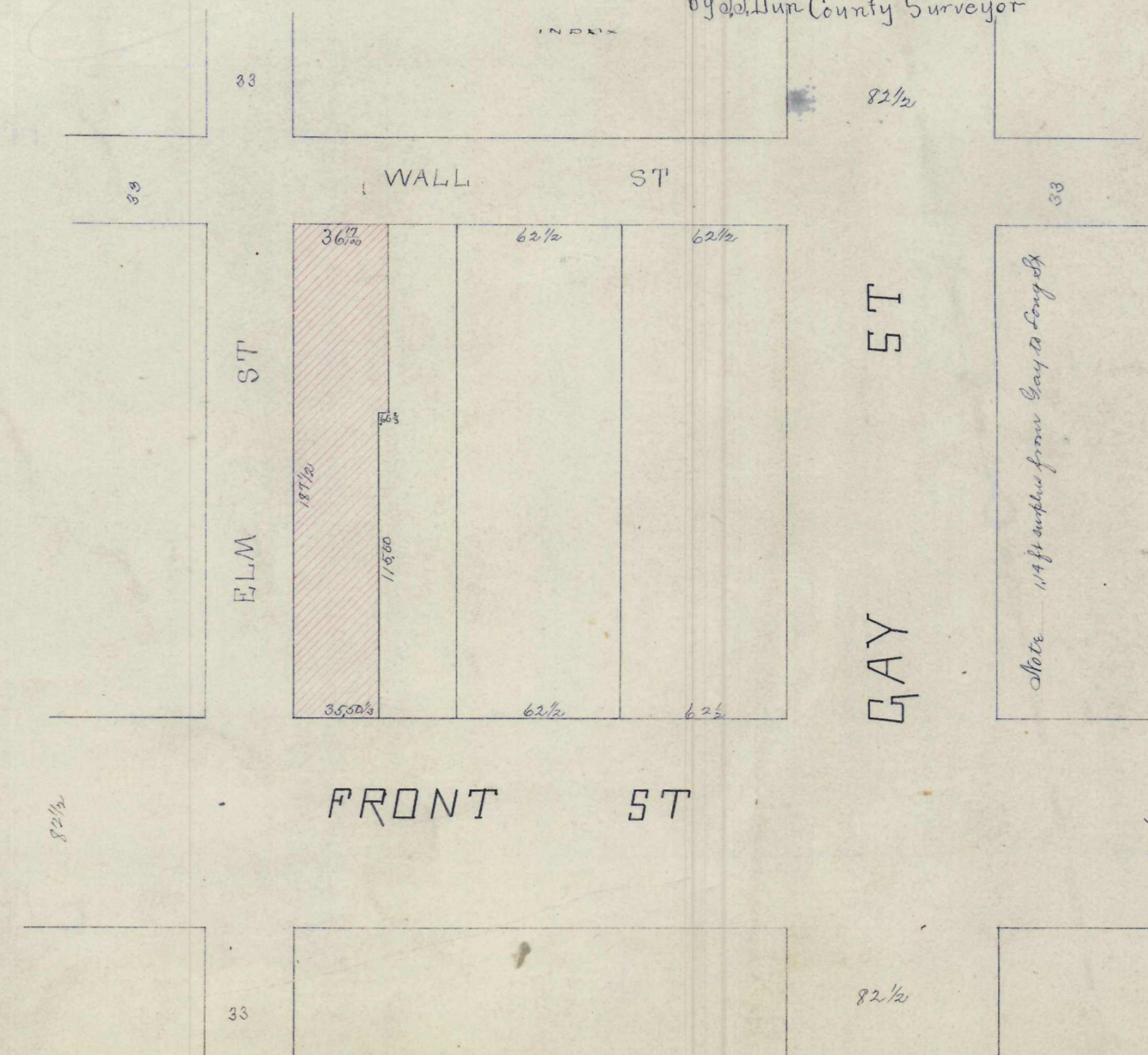
Plat
of
The James R. Walcott tract Franklin township
Surveyed by J. D. Dun County Surveyor April 15/90
per E. E. Legg Deputy



Plat
of
Land of H. A. Dobynd in Norwich Twp
Surveyed by J. D. Dun Co Sur-
per E. E. Legg
Deputy
1890



Plat
of
H. W. Pillow's Lot
surveyed March 19, 1890
by J. D. Dun County Surveyor



Plat
of
Land bought by Callender by Reunard
Franklin Twp. Surveyed April 14, 1890
By E. E. Legg
Deputy C.S.

