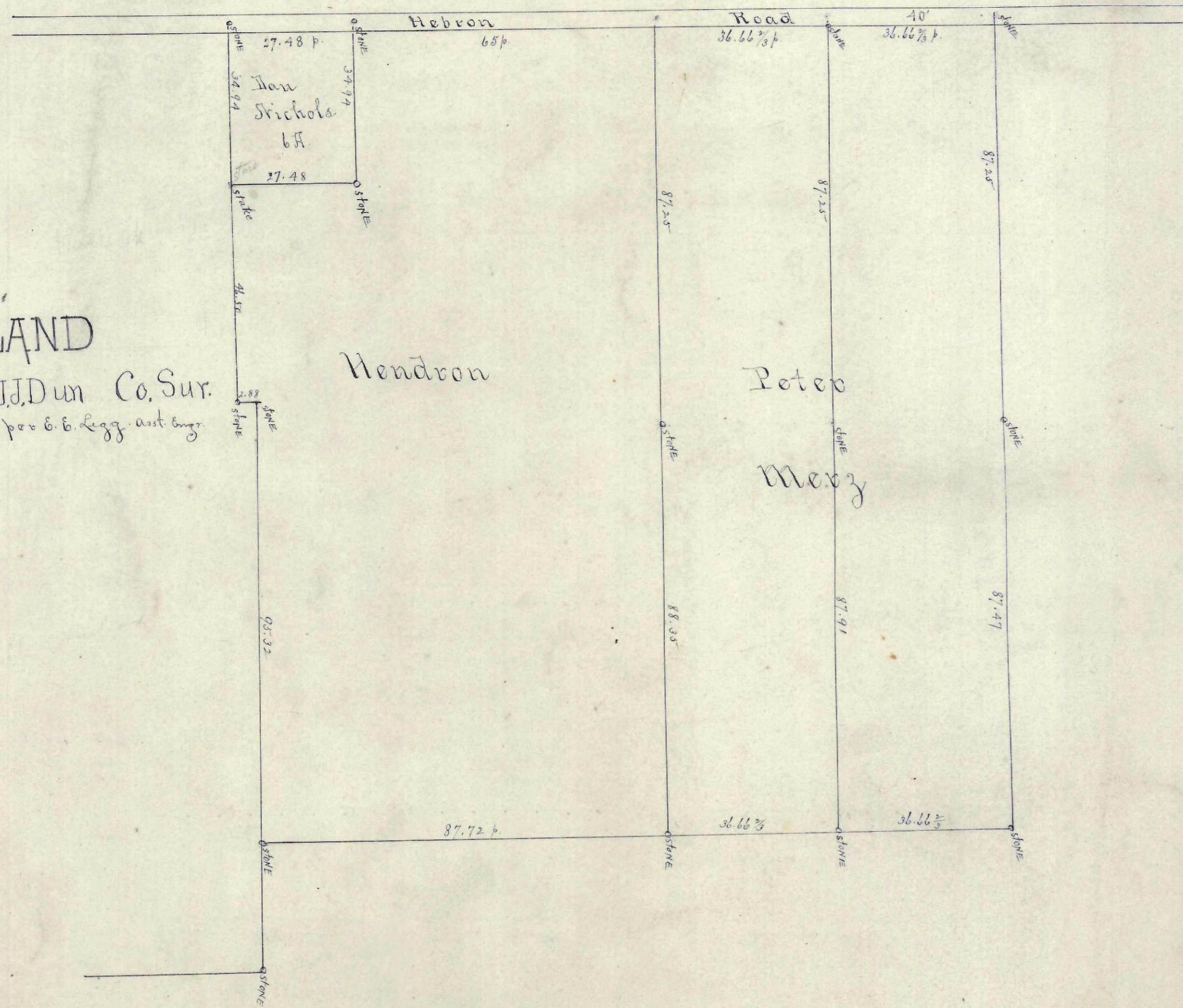


1890 FEB 22 1890

PLAT
OF
MERZ AND HENDRON LAND
 in Seaco Township.
 Surveyed Feb. 6, 1890, by J.D. Dun Co. Sur.
 MARK per E. B. Legg. Ant. Eng.



PLAT
Herman Wirth Land
 Surveyed by J.D. Dun per E. B. Legg Feb 1890

