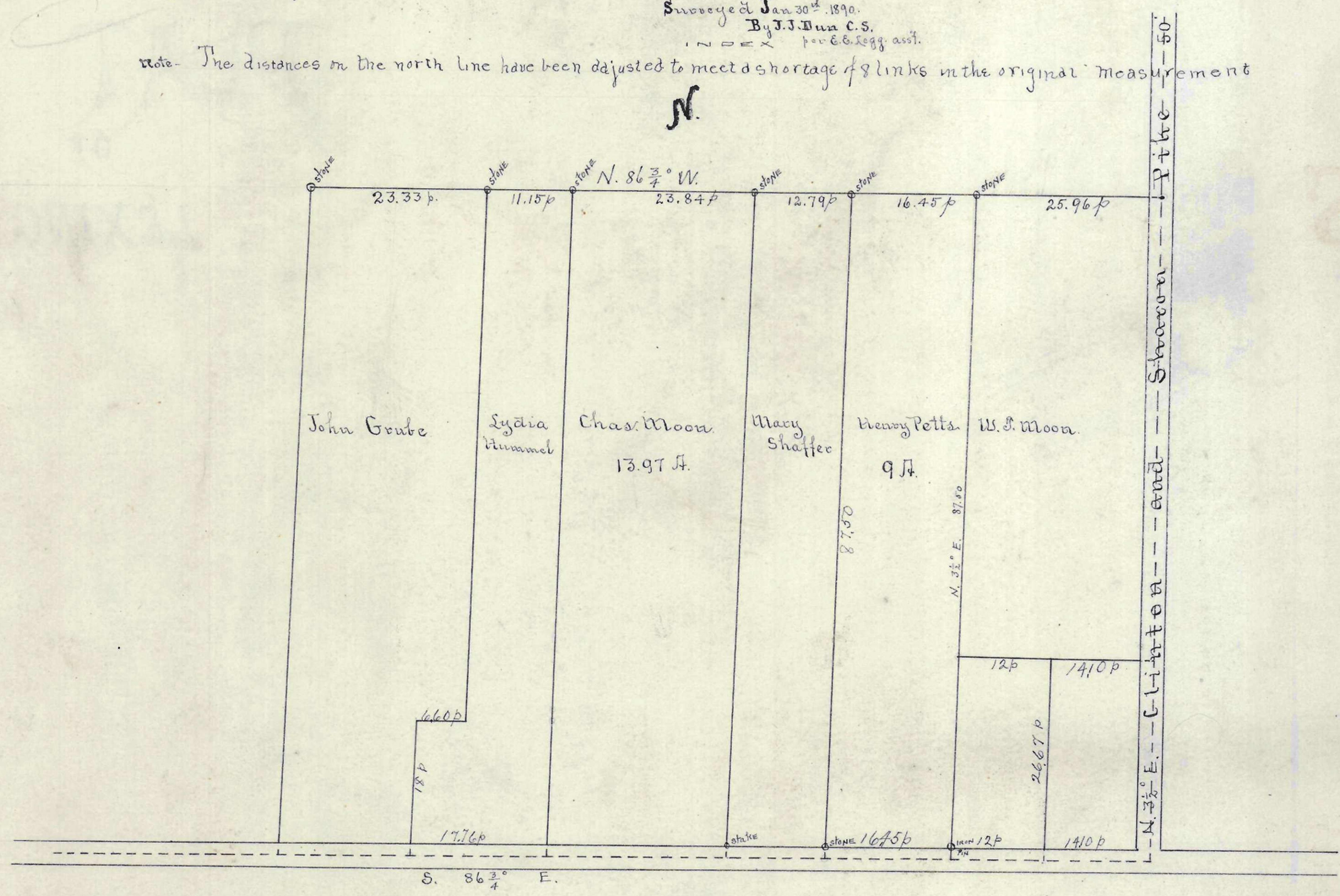


# PLAT

Of a survey made for Mary Shaffer of a part of the  
Jacob Lloyd tract in Clinton Township Franklin Co. O.

Surveyed Jan 30<sup>th</sup> 1890.  
By J.J. Dun C.S.  
per E. Legg att.

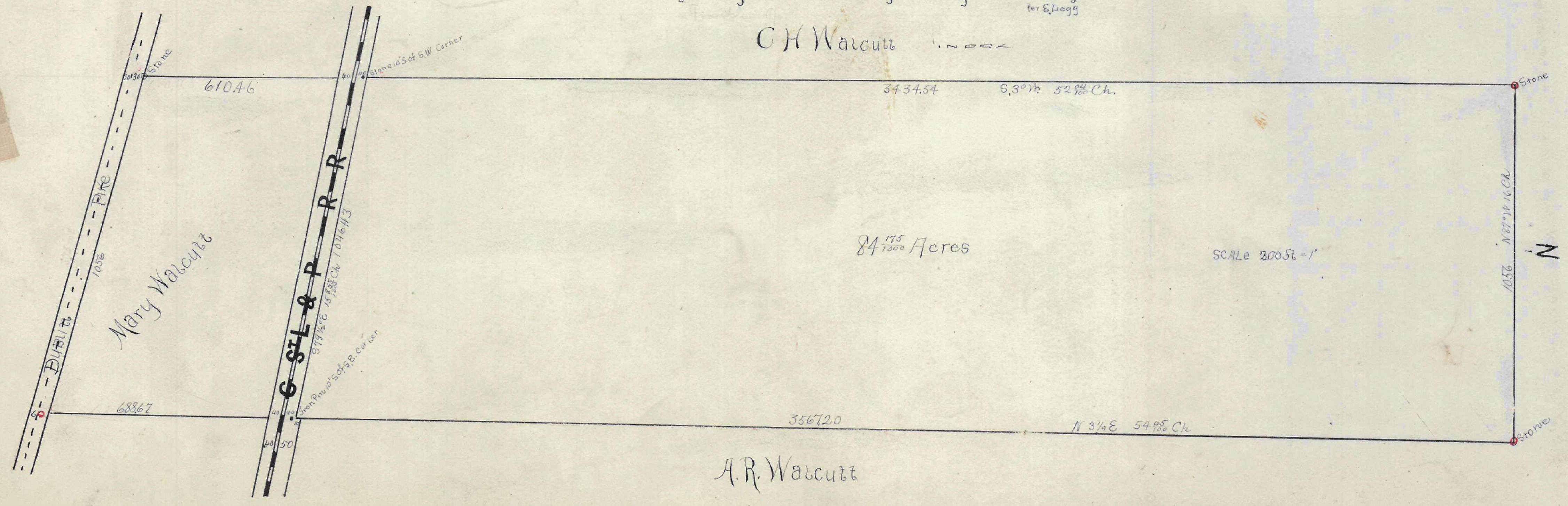
Note - The distances on the north line have been adjusted to meet a shortage of 8 links in the original measurement



# PLAT OF C. C. URLIN LAND

Surveyed By J.J. Dun County Surveyor Feb 15 1890  
per E. Legg

C.H. Walcutt



# PLAT

OF G.M. PARSON'S LOT

Surveyed By J.J. Dun Jan 90  
per E. Legg

