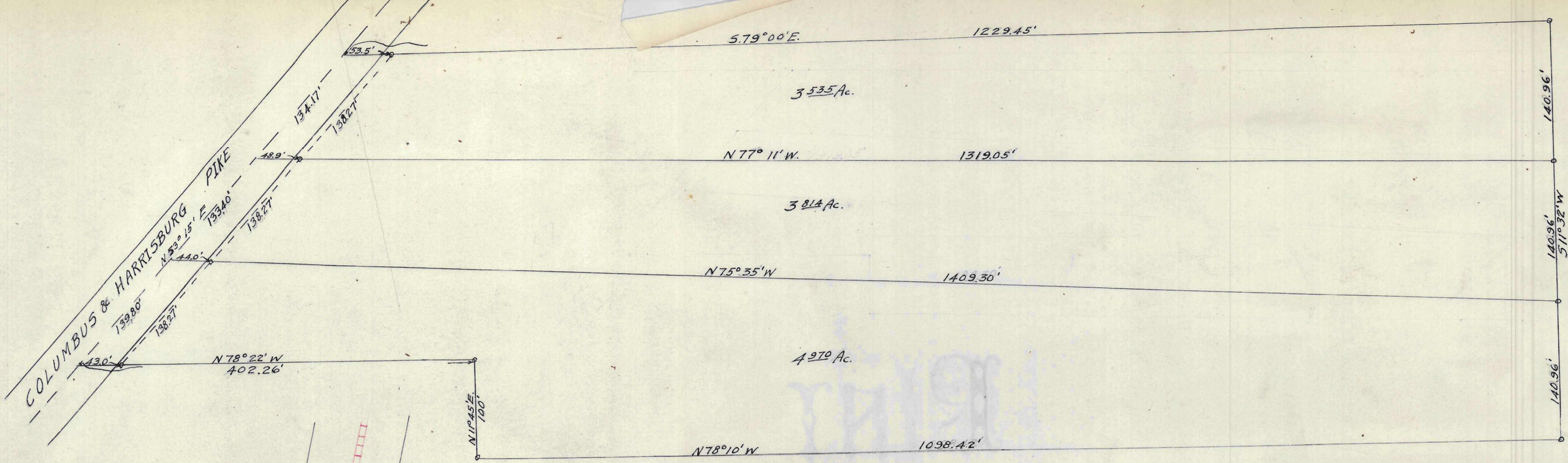
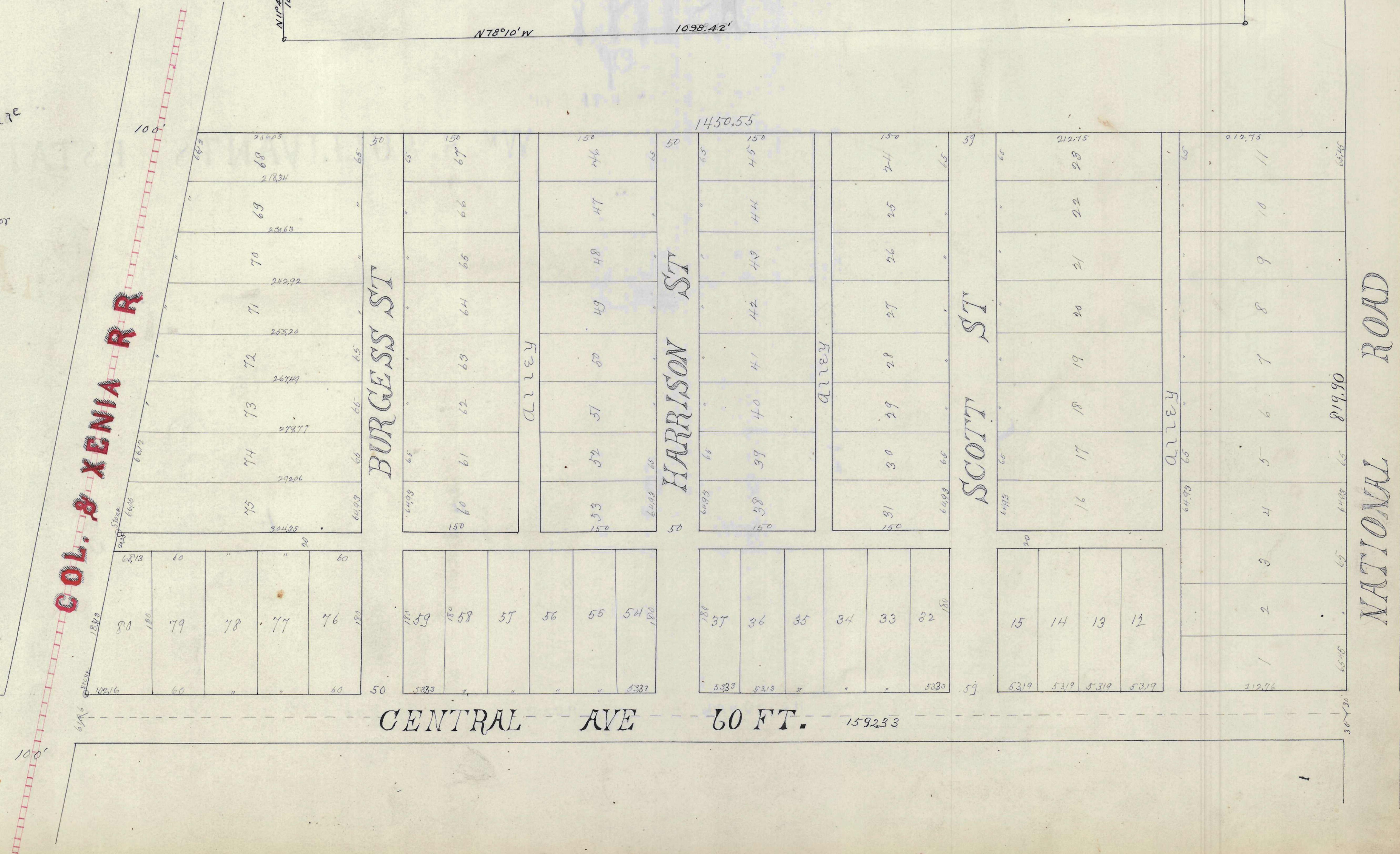


PLAT

Subdivision of lot 6 of W.S. SULLIVANT'S Estate
J. J. Dun
County Surveyor
March 1893



Plat of 12.319 Acre Tract in Franklin Twp. Franklin County O. for Henry Fritz June 17th 1924 Scale 1"=60' The Jennings Lawrence Co. Civil & Municipal Engineers Columbus, Ohio.



COL. & XENIA RR

BURGESS ST

HARRISON ST

SCOTT ST

CENTRAL AVE 60 FT.

NATIONAL ROAD

1	2	3	4	5	6	7	8	9	10	11
12	13	14	15	16	17	18	19	20	21	22
23	24	25	26	27	28	29	30	31	32	33
34	35	36	37	38	39	40	41	42	43	44
45	46	47	48	49	50	51	52	53	54	55
56	57	58	59	60	61	62	63	64	65	66
67	68	69	70	71	72	73	74	75	76	77
78	79	80								