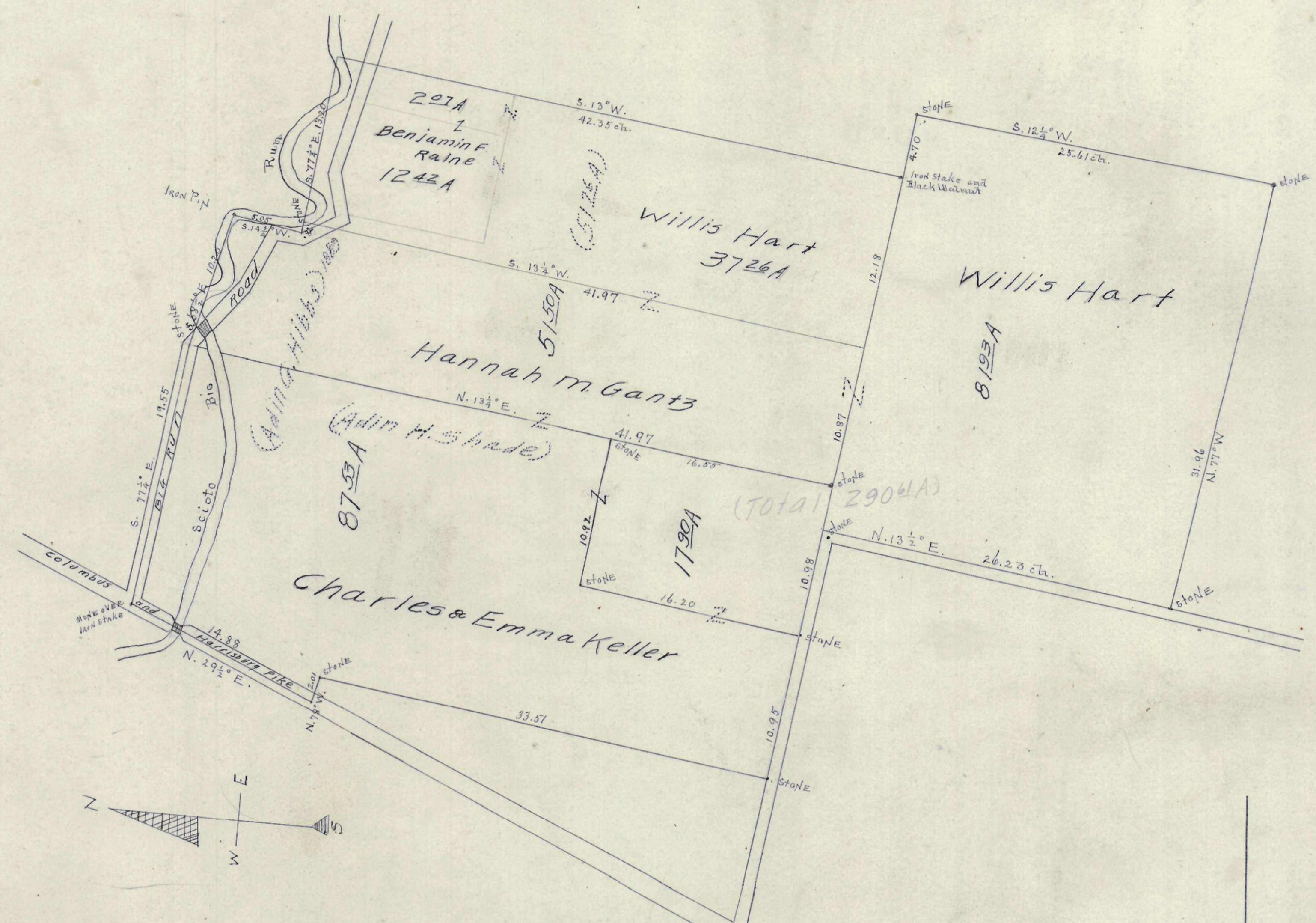
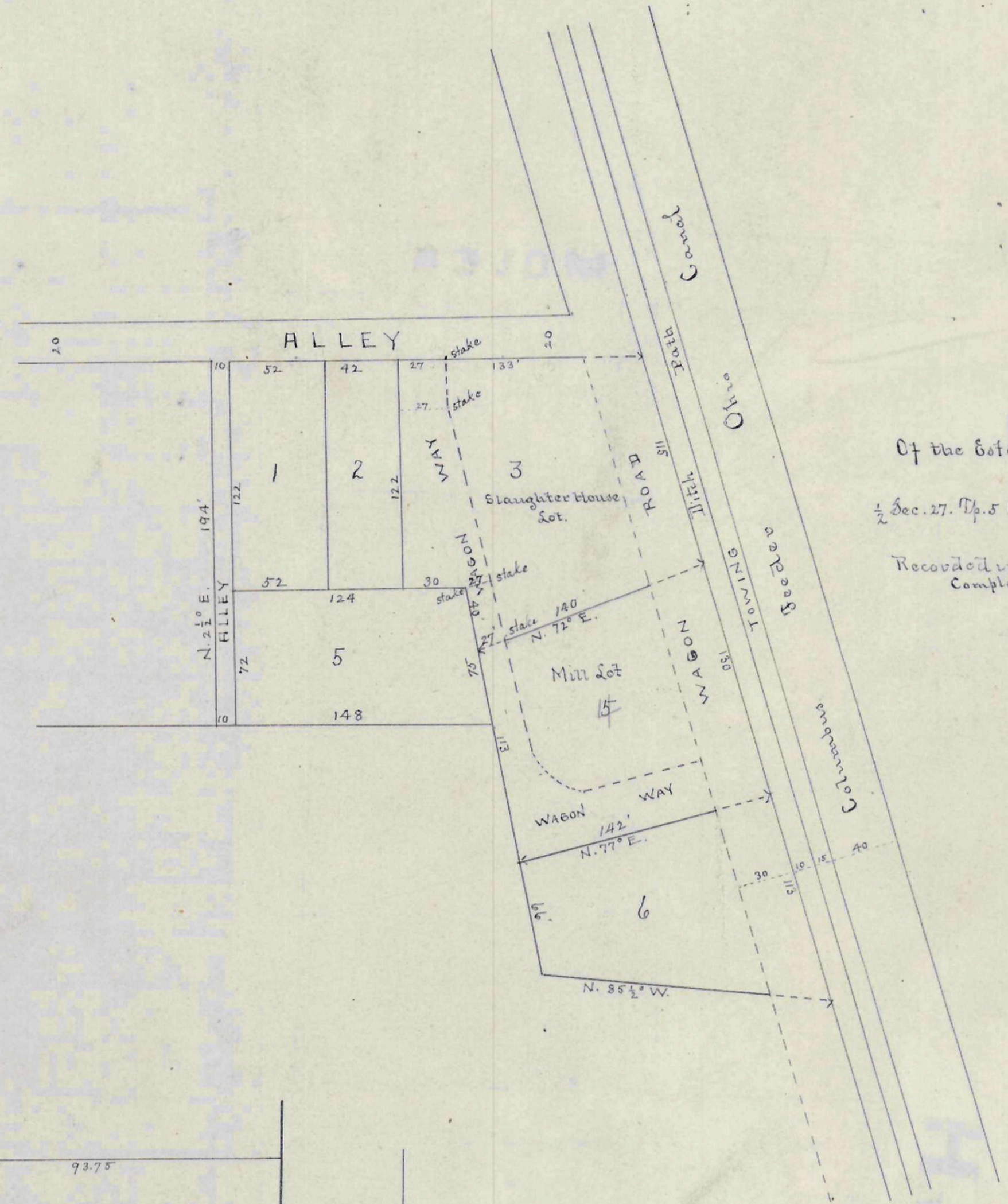
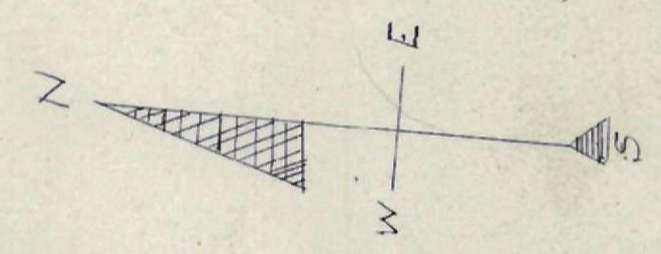


4187
16.57
2572



PLAT

Of lands belonging to the Estate of Adin H. Shade. Being in Divisions
 Nos 1454 and Virginia Military District in Franklin and Jackson
 Townships Franklin County O. Nov. 1889. INDEX

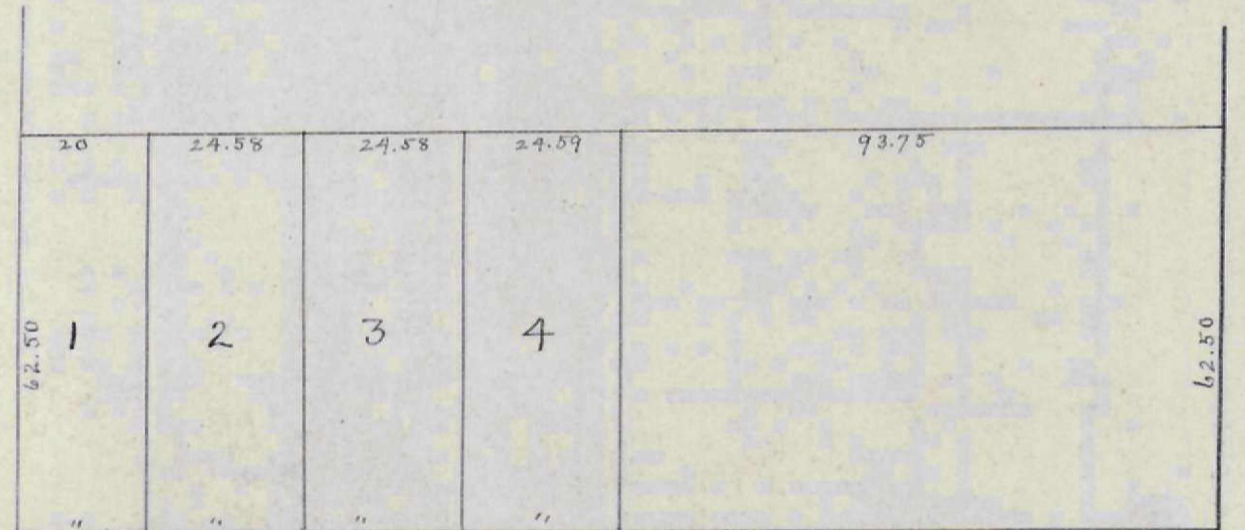


Plat

Of the Estate of Wesley Sawhill. Being part of
 1/2 Sec. 27, Tp. 5 R. 22 Refugee Lands. Lots 1 to 6 inclusive.
 Nov. 89.
 Record of the Probate Court
 Complete Record b. P. 236. INDEX

82 1/2

FRONT ST.



ST. 33

RICH ST.

Plat of
 Amon Jenkins Hrs. Sub. of West half of 1st lot
 No 211 in City of Columbus O. as shown on Original Plat of City.
 INDEX

WALL

82 1/2