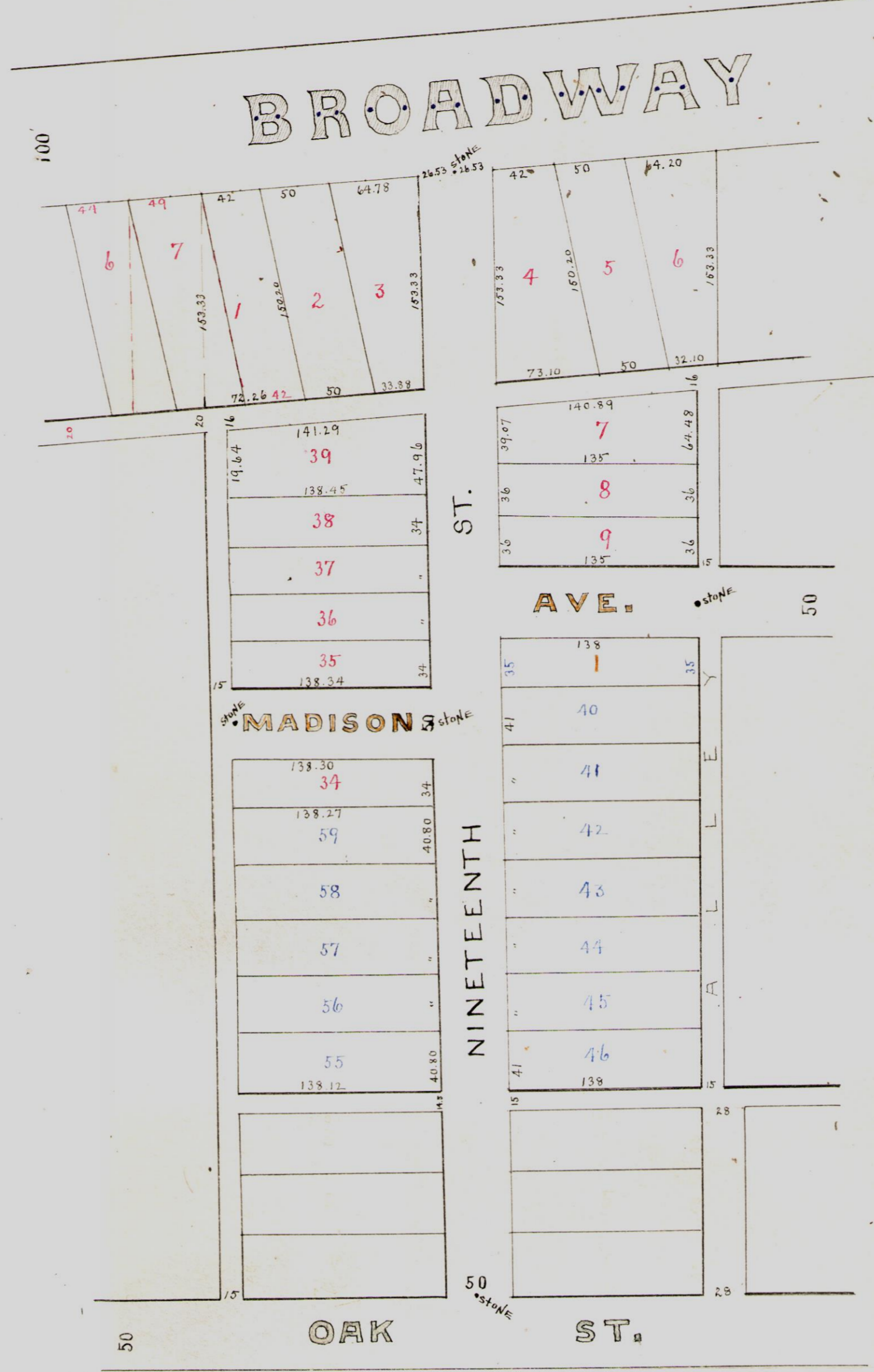


PLAT

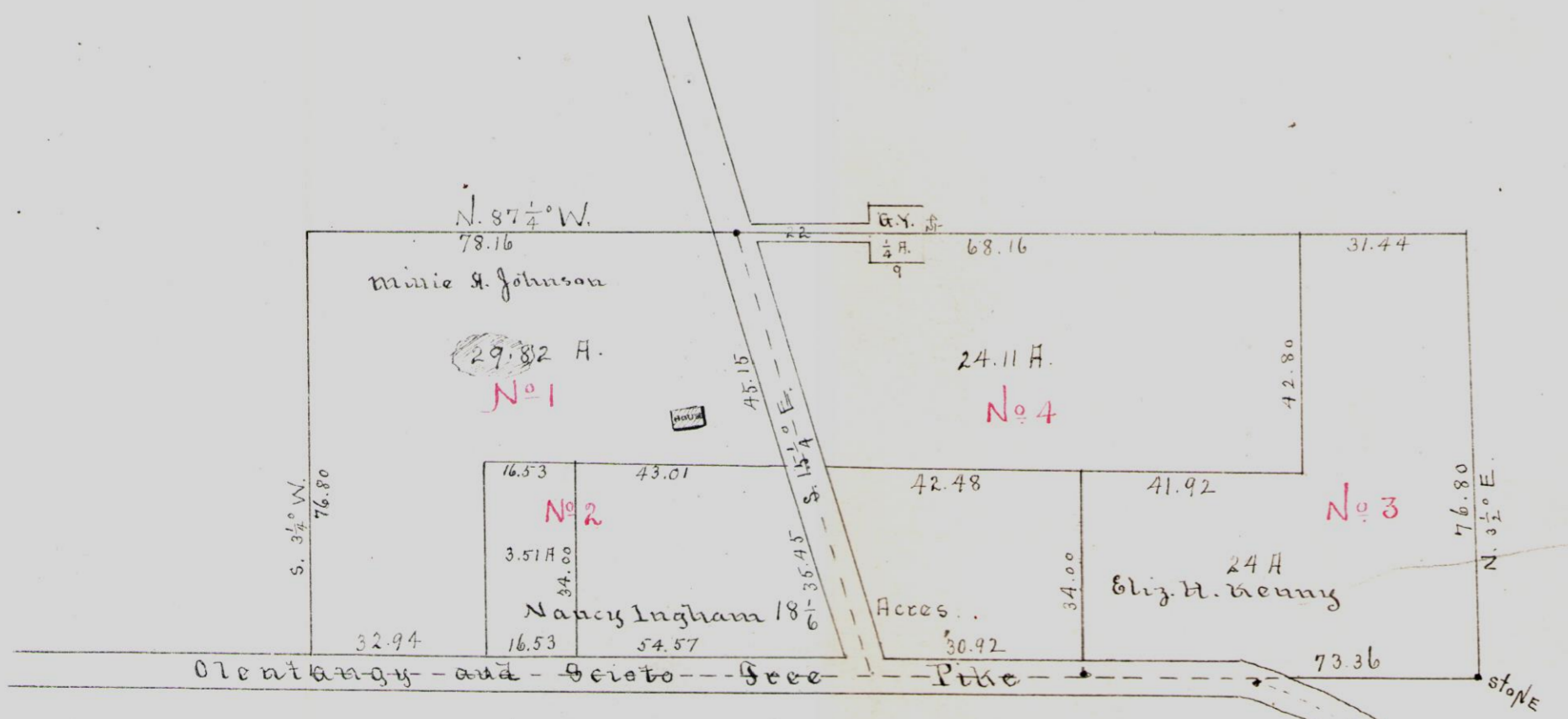
Of Samuel Payne et al Subdivision of Lots Nos. 143 and 144 of Samuel Doyles Lockwin Station. Nov. 1887. INDEX



Plat of Broad Oak Place Addition

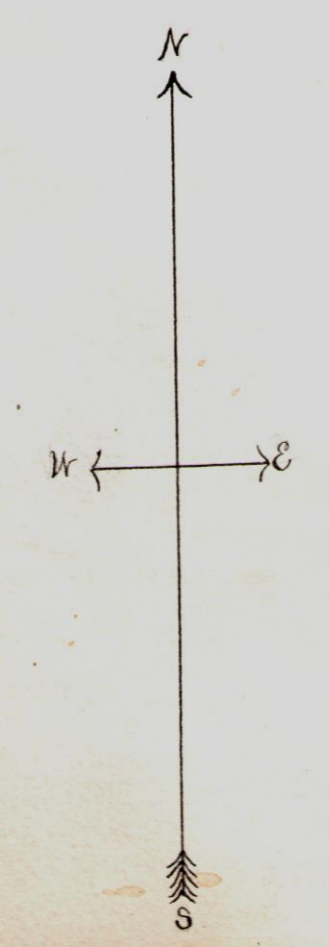
W.A. Walden & S.S. Hoffman Proprietors. Nov. 89. INDEX

Notes.
 The Plat adjoining shows what remains and also the change made by several subsequent subdivisions of the original plat. The first of these changes was made Nov. 31. 1887 recorded in Plat Book 3 Page 358 which subdivided lots Nos. 10, 11, and 12 and the alley between lots 12 and 13.
 Oct. 11. 1886 the proprietors subdivided lots 13 to 33 both inclusive and lot No. 2 of their subdivision of lots 10, 11, and 12 and the alley between lots 12 and 13. This only left one lot No. 1 at the south east corner of Madison Ave. and Nineteenth St. and numbered in yellow on the plat. This subdivision is recorded in Plat Book 4 Page 19, and the lots remaining undivided are numbered as on the adjacent plat. Nos. 40--46 on right hand column and lots 55--59 on left hand column.
 Dec. 1888 the proprietors subdivided lots 47--54 of their last subdivision made Oct. 11. 1886. They turned these lots around making them front on 19th Street instead of on Oak Street. This change is recorded in Plat Book 4 Page 181 and is shown on the bottom of the annexed plat numbered in green 6 lots.
 1st Subdivision numbered in red.
 2nd Subdivision numbered in yellow 1 lot.
 3rd Subdivision numbered in blue 12 lots.



PLAT

Of 100 Acres of Land in Town 2 Down 1 Range 14 U.S. Military Lands Being the Thomas Leagy Farm as divided between his heirs May 1889. in Army Partnership. Nov. 89. INDEX



Plat of the Edmund Dague Survey

Surveyed May 22, 1890 by E.K. Legg Deputy Co. Surveyor. INDEX

