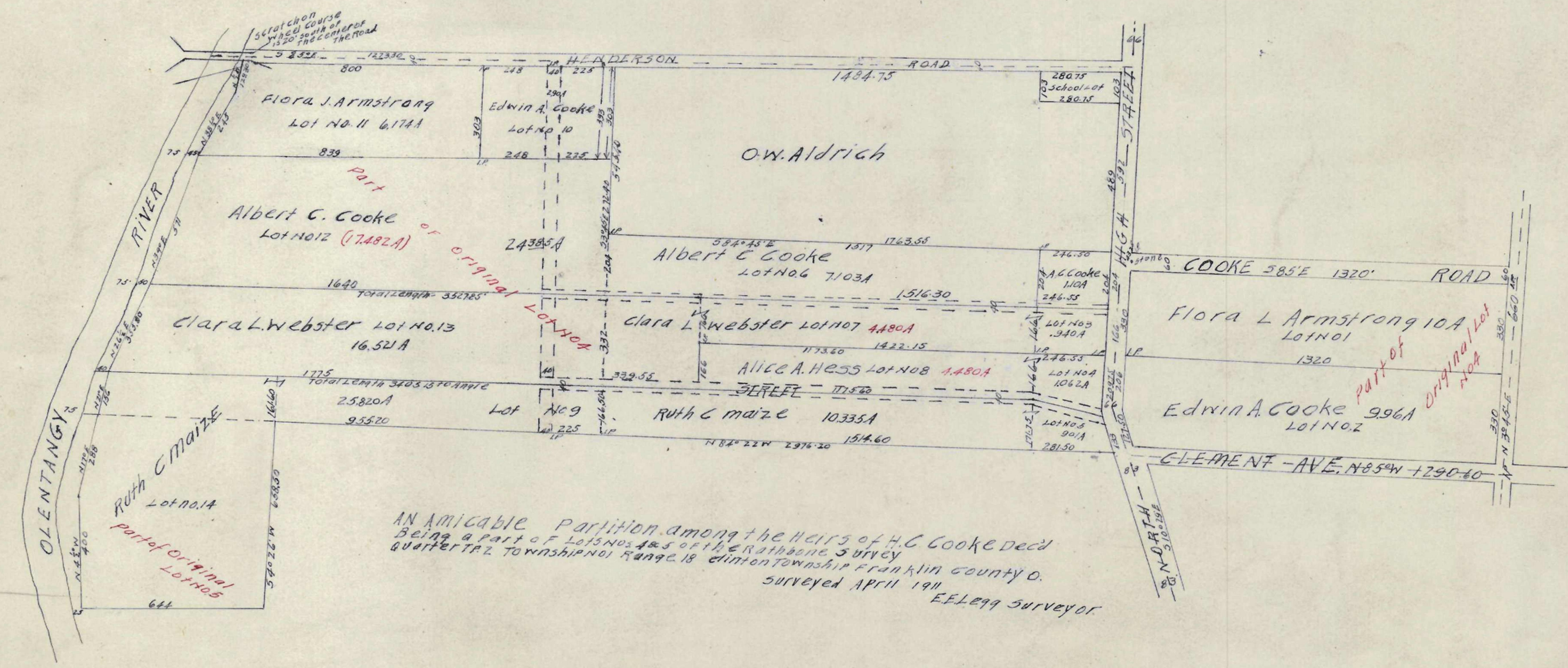
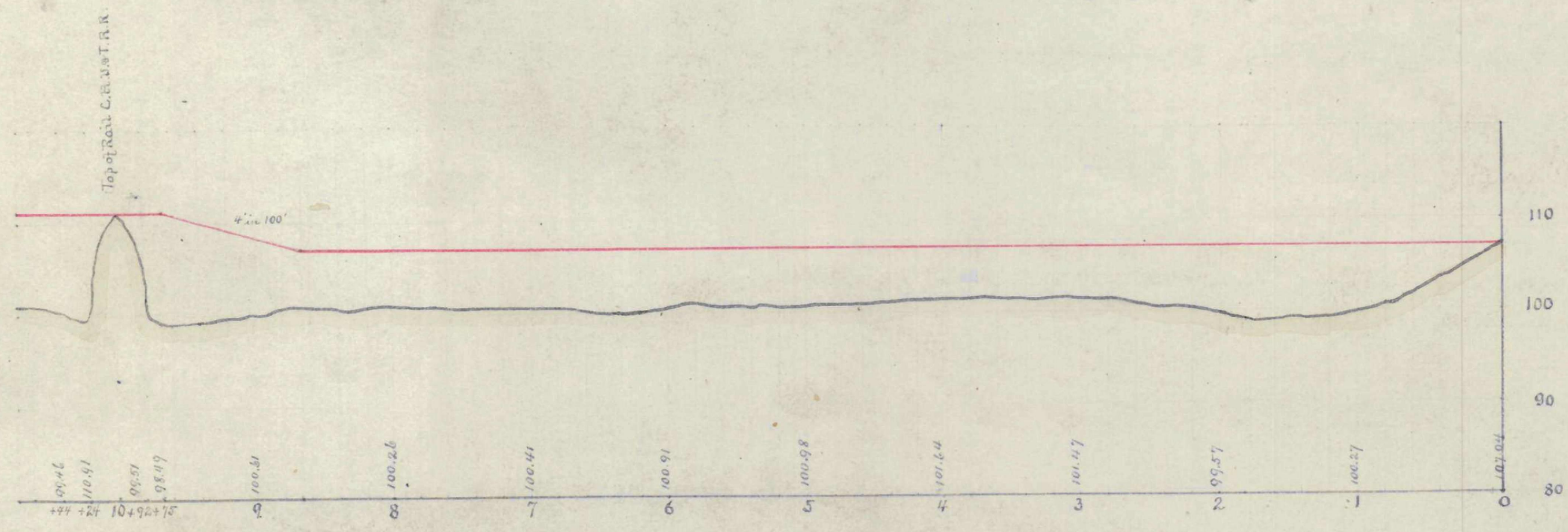


Grade established by order of commissioners on Third Avenue from levee on west side of the Olen tangy river west 3462 feet.

Established by
 Josiah Kinnear
 County Surveyor
 Oct. 1889.
 By W. B. B. IN DR A



AN AMICABLE Partition among the heirs of H.C. Cooke Decd
 Being a part of 1015402 1/2 of the Rathbone Survey
 Quarter 22 Township No. 18 Range 18 Edition Township Franklin County O.
 Surveyed April 1911
 E. E. 1911 Surveyor