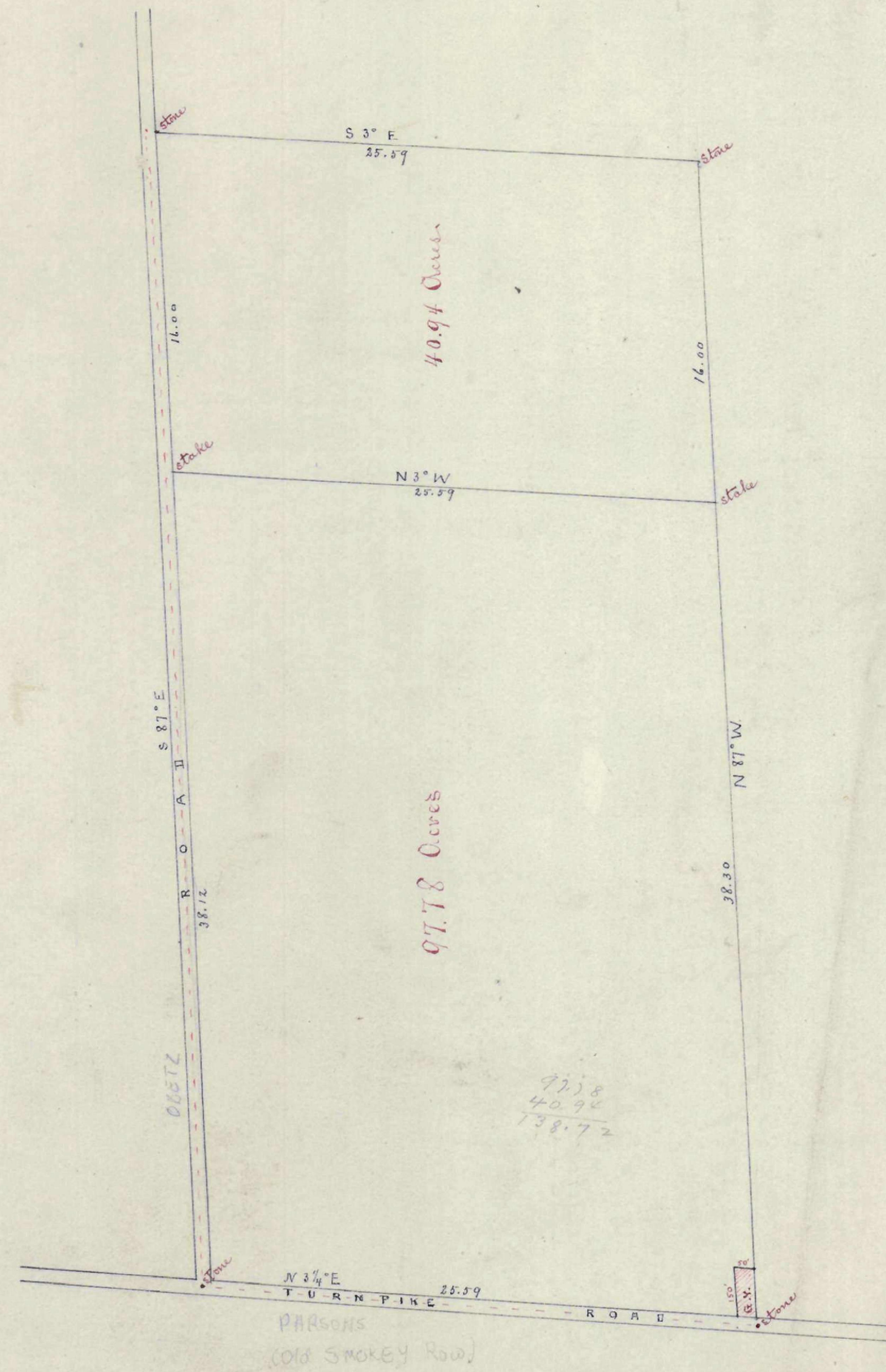
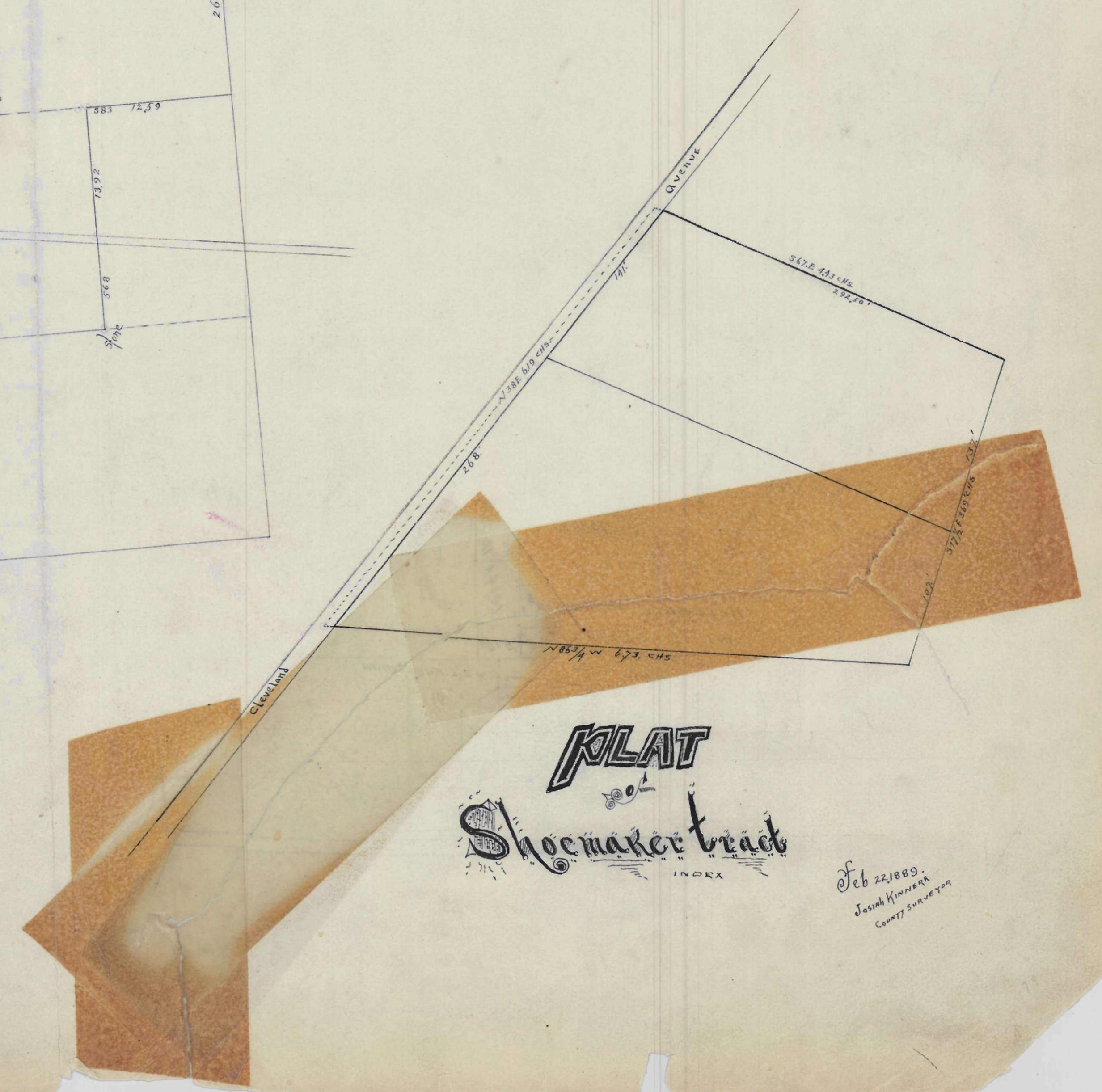
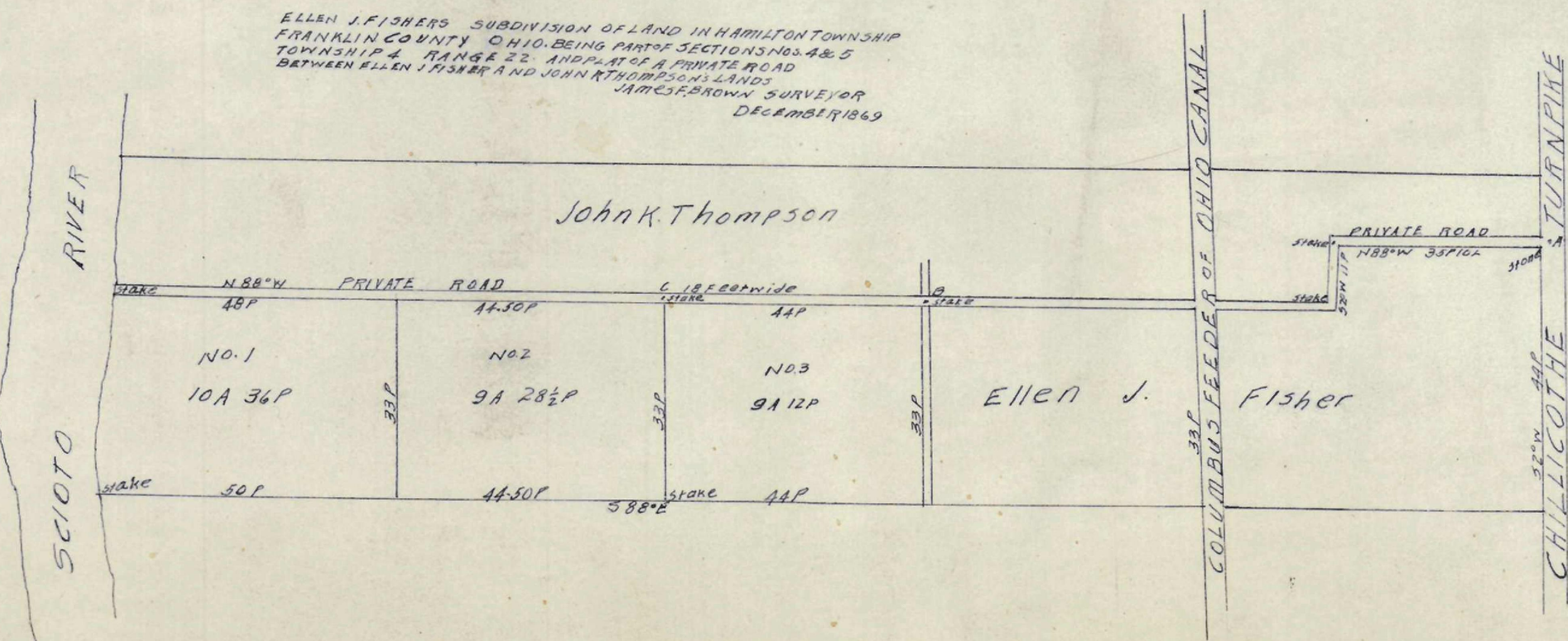


John Plat of The Stimmel Land

INDEX



ELLEN J FISHERS SUBDIVISION OF LAND IN HAMILTON TOWNSHIP
FRANKLIN COUNTY OHIO BEING PART SECTIONS 16 & 5
TOWNSHIP 22 RANGE 22 AND PART OF A PRIVATE ROAD
BETWEEN ELLEN FISHER AND JOHN THOMPSON'S LANDS
JAMES FENWICK SURVEYOR
DECEMBER 1869



Feb 22 1869.
James Fenwick
Surveyor