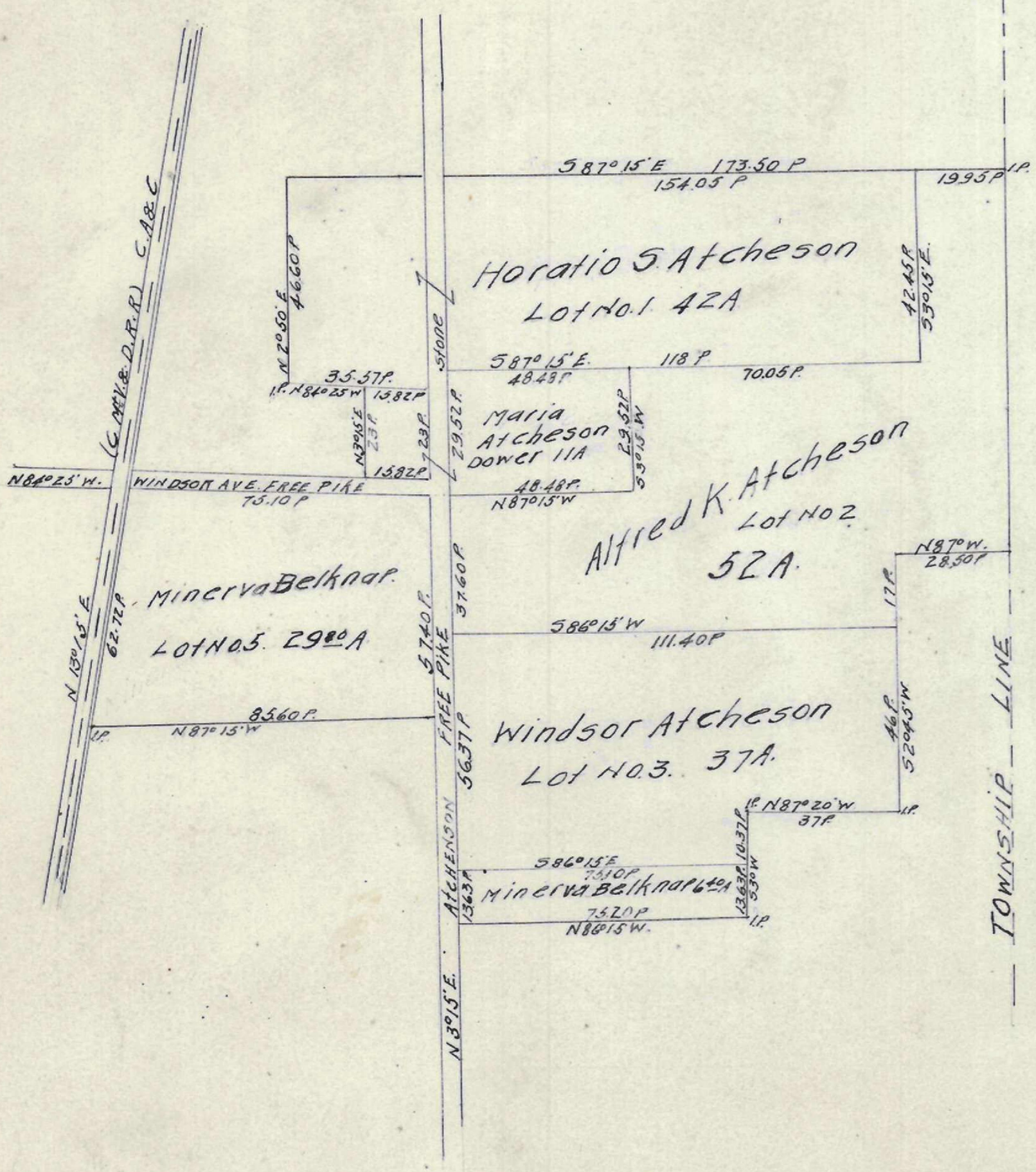
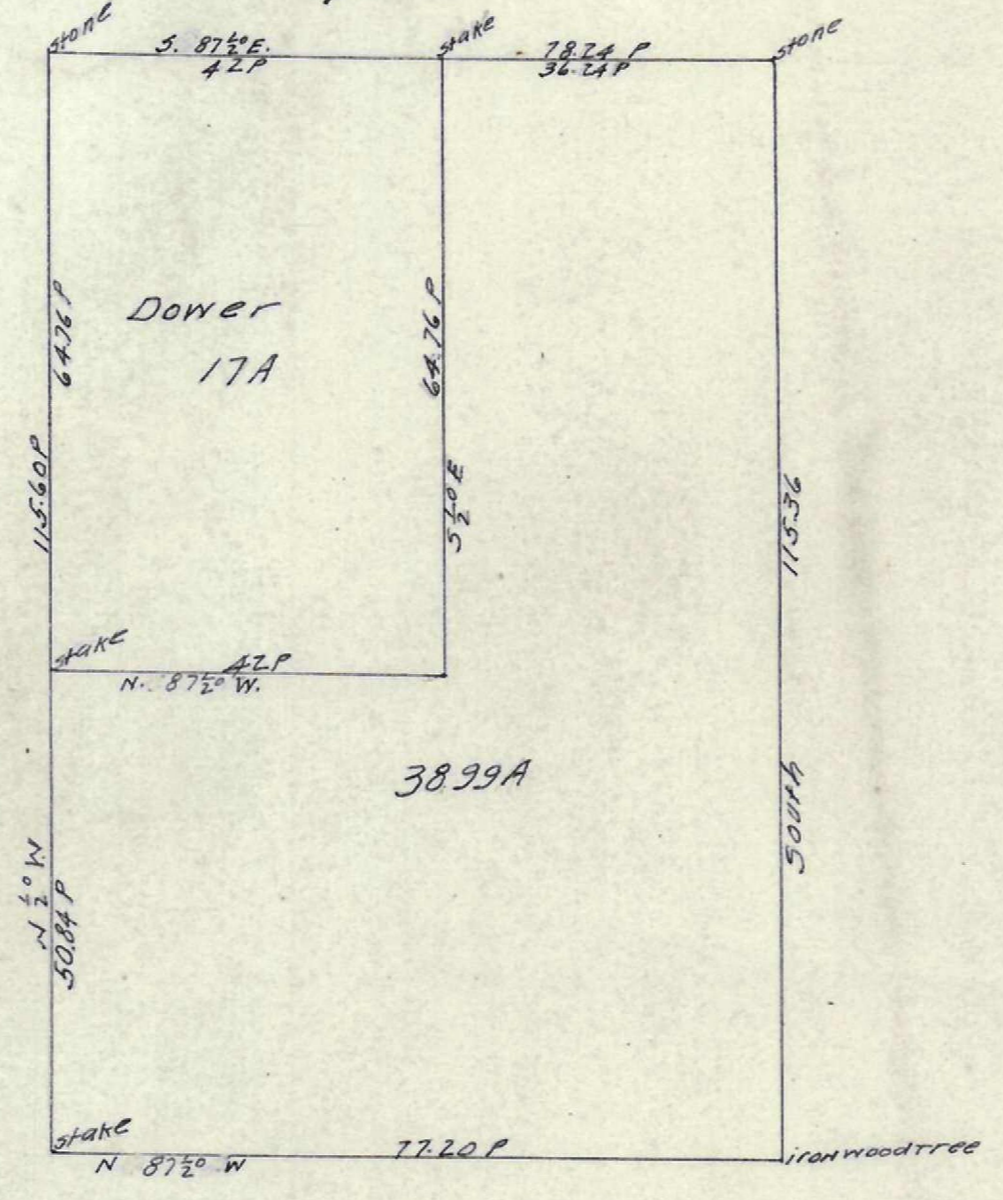


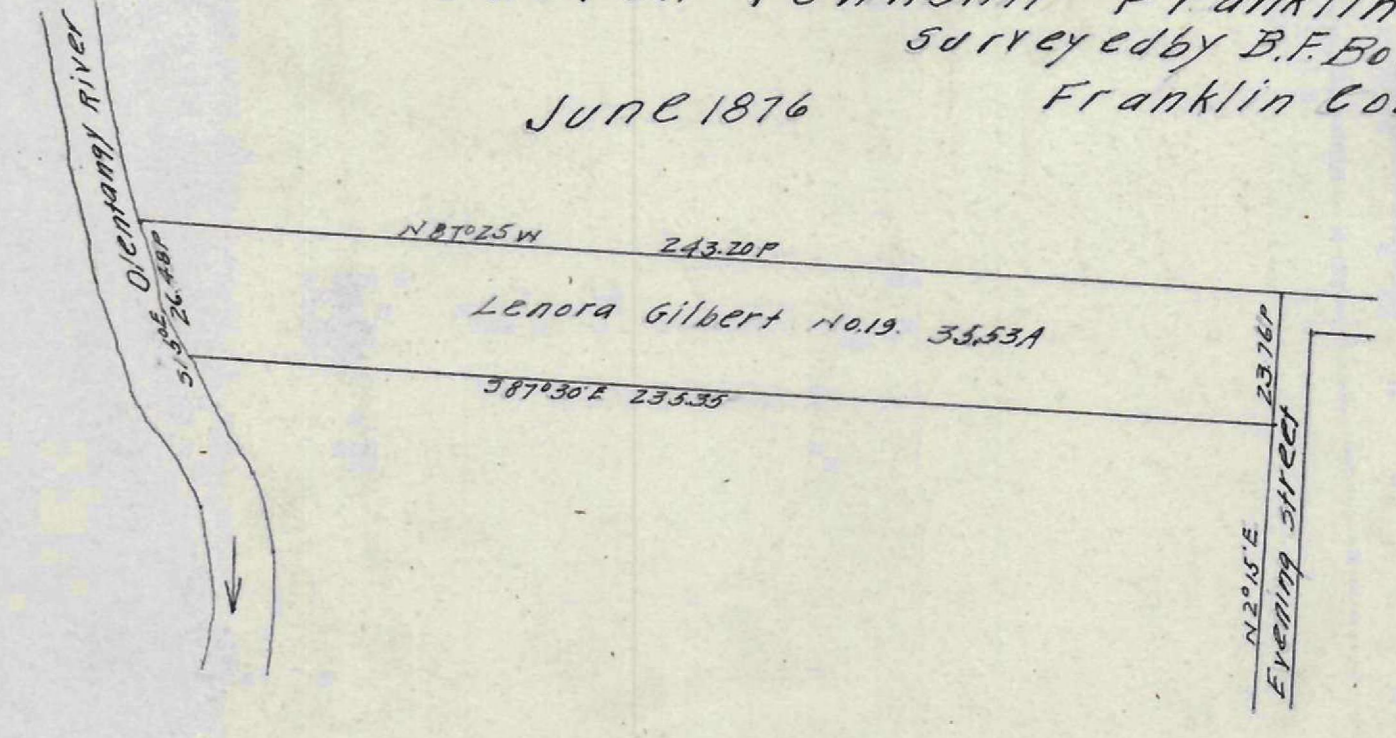
Plat of Partition  
 in the Case of Minerva Belknap et al  
 vs  
 Horatio Atcheson et al  
 surveyed June 24th 1875  
 B.F. Bowen Surveyor



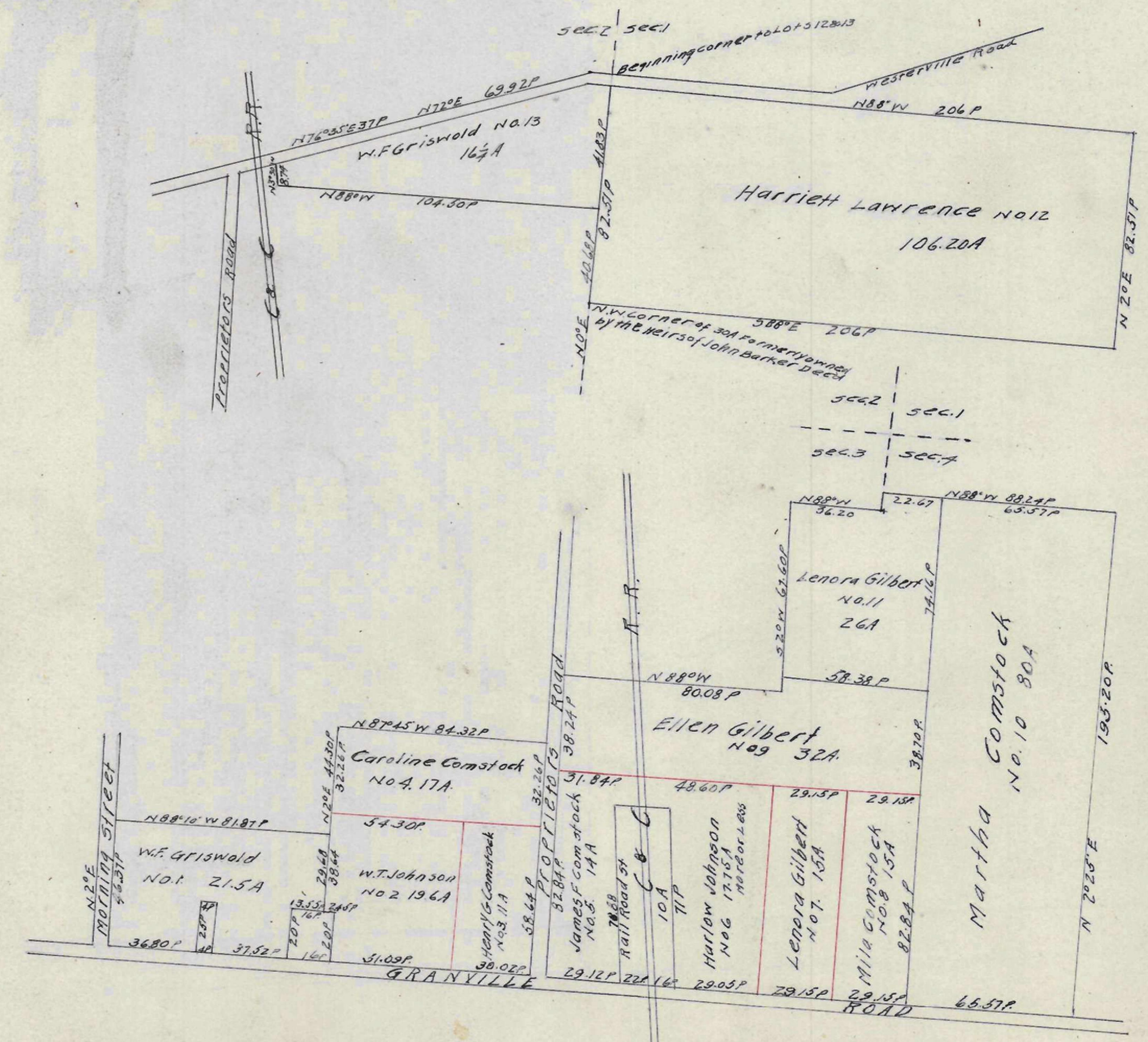
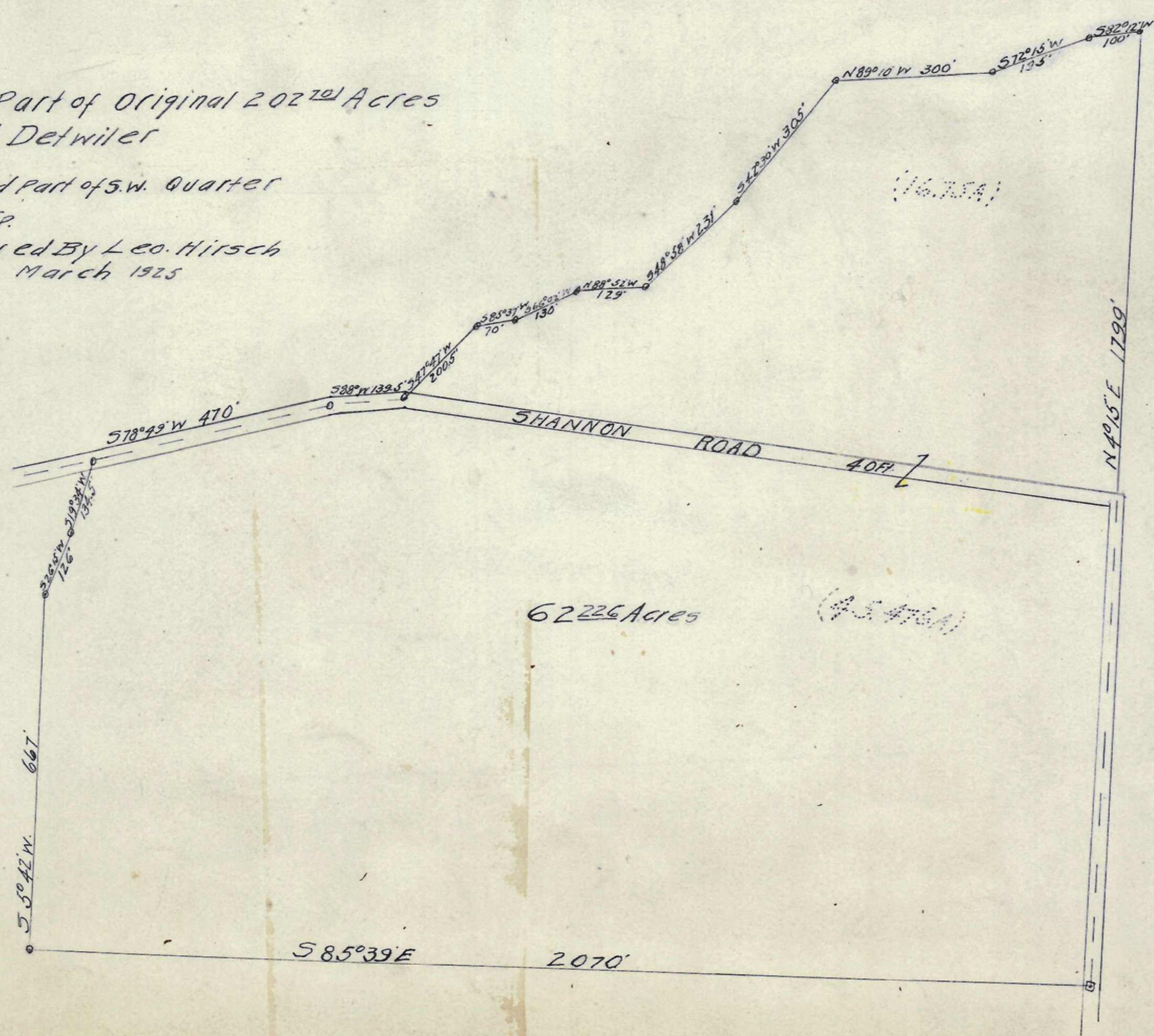
Plat of Elias Holt's Farm  
 in Prairie Township  
 Franklin County Ohio  
 being Part of Survey  
 No. 1462 surveyed November 16th 1874  
 by John Court right Surveyor



Plat of Partition in the Case of  
 Worthington & Griswold  
 vs  
 Harriett Lawrence et al  
 Sharon Township Franklin County Ohio  
 surveyed by B.F. Bowen  
 Franklin County Surveyor  
 June 1876



Plat of 62.226 Acres Being Part of Original 202.2nd Acres  
 owned by Daniel Detwiler  
 Being in the N.W. Quarter and part of S.W. Quarter  
 of Sec. 12 R. 21 Madison T.P.  
 Surveyed by Leo Hirsch  
 March 1925  
 Scale 1" = 200ft.



Griswold Pl.