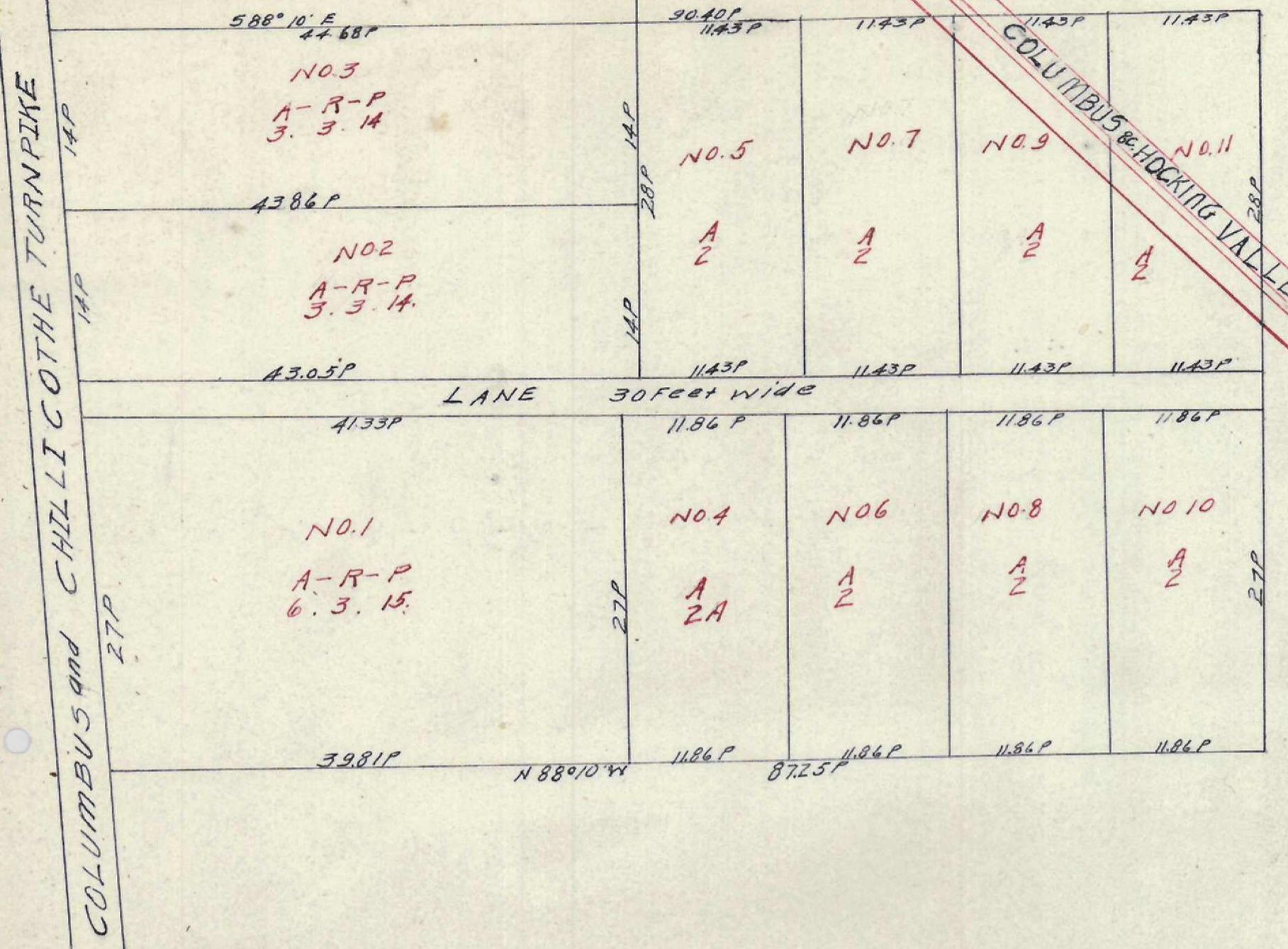


PLAT OF EDWARD FISHER'S Subdivision of 30 1/2 Acres of Land situated on the Chillicothe Turnpike about Two miles south of Columbus being part of Lots Nos. 4 & 5 of Lands partitioned among the Heirs of William Stuart surveyed and Platted by W.W. Pollard October 25<sup>th</sup> 1866



# PLAT OR NEFF FARM

PLEASANT T. P. FRANKLIN CO. O.  
Franklin Jan 1899  
PCT. 03. 11. 115. INDEX

