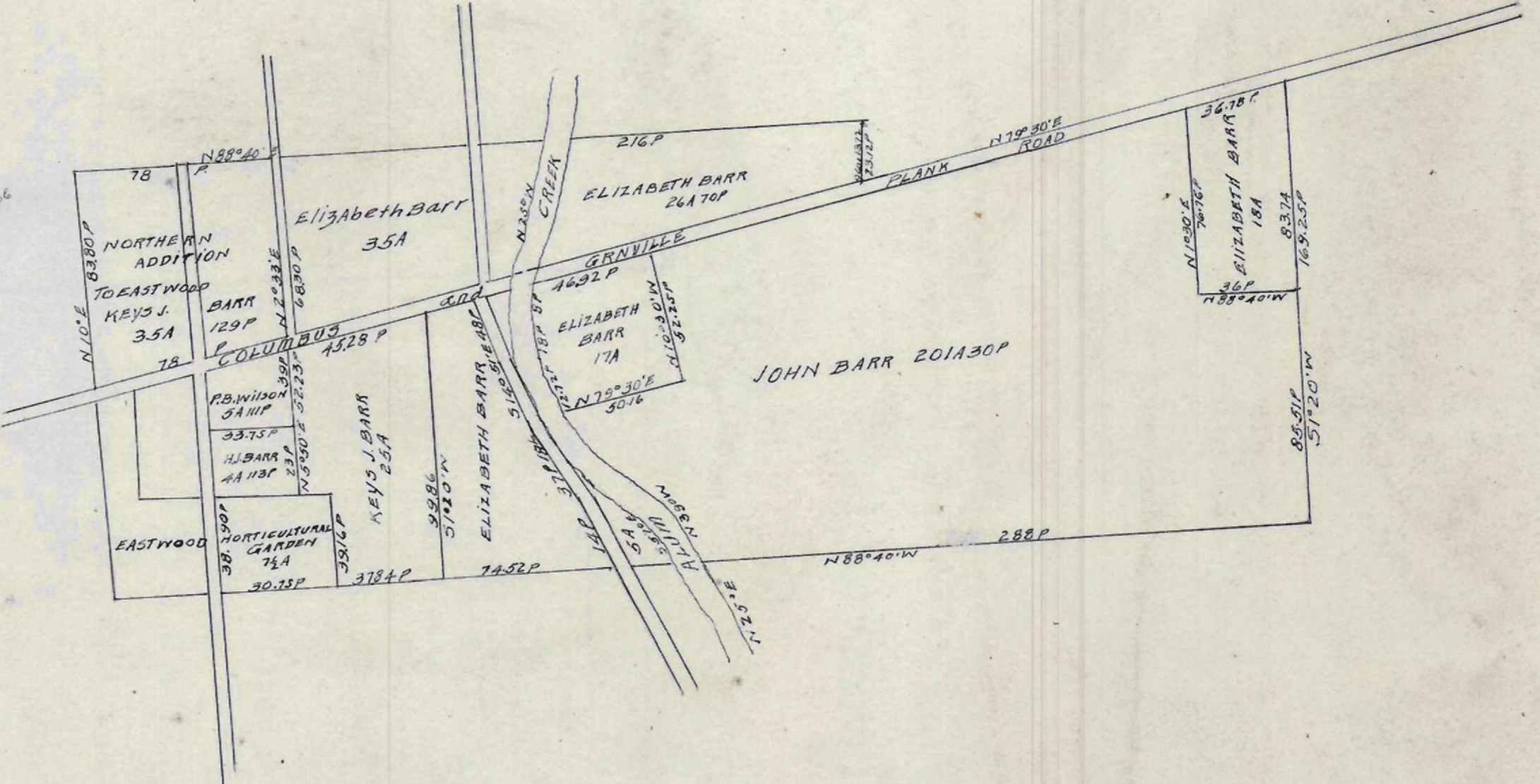


RANGE 18 U.S.M. LANDS "EXHIBIT A"



TOWNSHIP NO. 5 RANGE 22 AND
TOWNSHIP NO. 1 RANGE 23 U.S.M. LANDS
FRANKLIN COUNTY OHIO. SURVEYED BY
JOHN MATTHEWS & EBEN BUCKINGHAM
MAY 1799.
Also showing the water shelter said section
arrows show direction of drainage

RANGE 17 U.S.M. LANDS



NOTES
AN IRON PIN IN THE CENTER OF MOCK ROAD
A CUT LIME STONE SOUTH LINE OF MOCK ROAD
AN IRON PIN 8 FT SOUTH EAST CORNER OF KINER TRACT
A STONE WEST LINE OF RIGHT OF WAY OF R.R. ESTABLISHED BY GRAHAM & BREMER
SUMMIT ST
IN THE TOWNSHIP LINE OR CLINTON AVE
NOT IN THE TRUE LINE

PLAT
OF THE
Kiner and Innis
line.

INDEX

PLAT OF THE STORY DOWER SET OFF SEPTEMBER 1854
TO B. BENTON, COMMISSIONER
OF THE PUBLIC LANDS
PHIL D. FISHER SURVEYOR
PLEASANT TOWNSHIP FRANKLIN COUNTY OHIO.

