

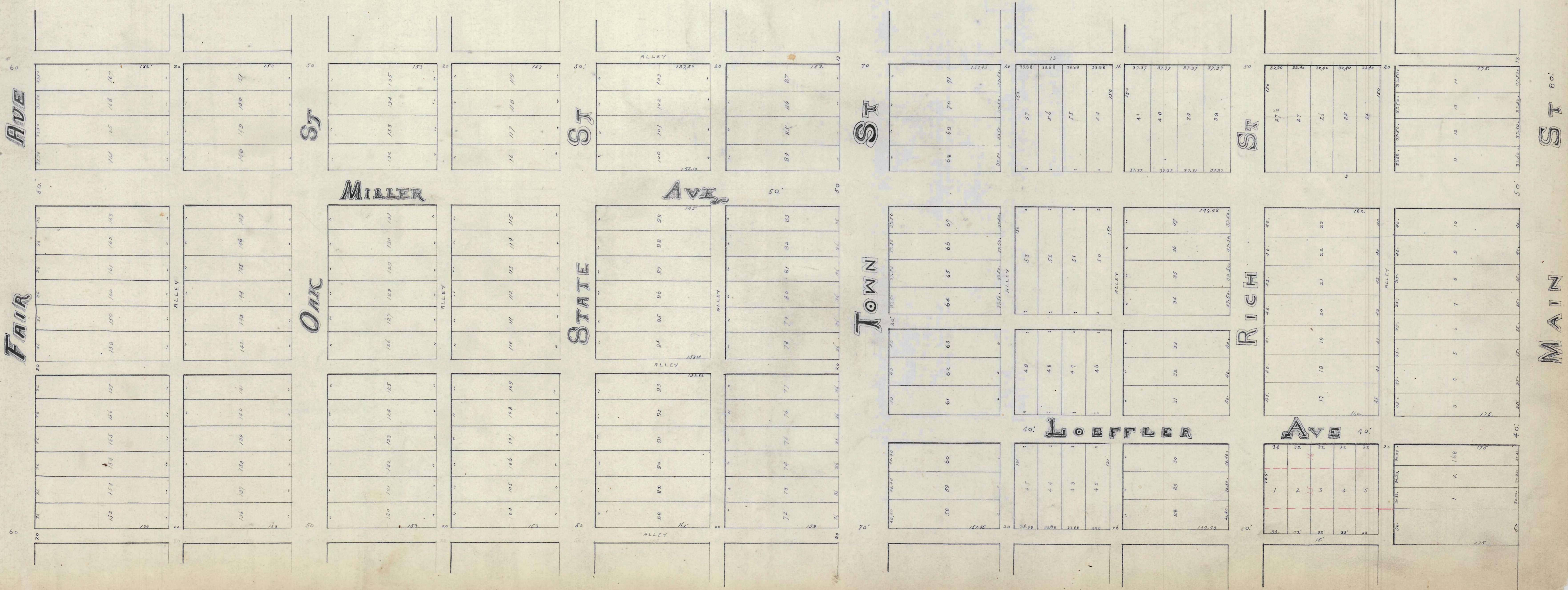


# NELSON'S ADDITION

AS resurveyed  
by:  
*Josiah Kinnear*  
Surveyor.

JULY, 1887

Note: the depth of lots 1-2-3-4-5 of the assignee sub. of original lots 15 and 16 is 126 ft by actual measurement, although marked on the record as 127 ft. 131.  
J. KINNEAR S.S.  
REV. S.S. 1880.



INDEX

ST 80'

MAIN ST

AVE 60'

FAIR AVE

ST 50'

OAK ST

ST 50'

STATE ST

ST 70'

TOWN ST

ST 50'

RICH AVE

LOEFFLER AVE 40'

AVE 40'