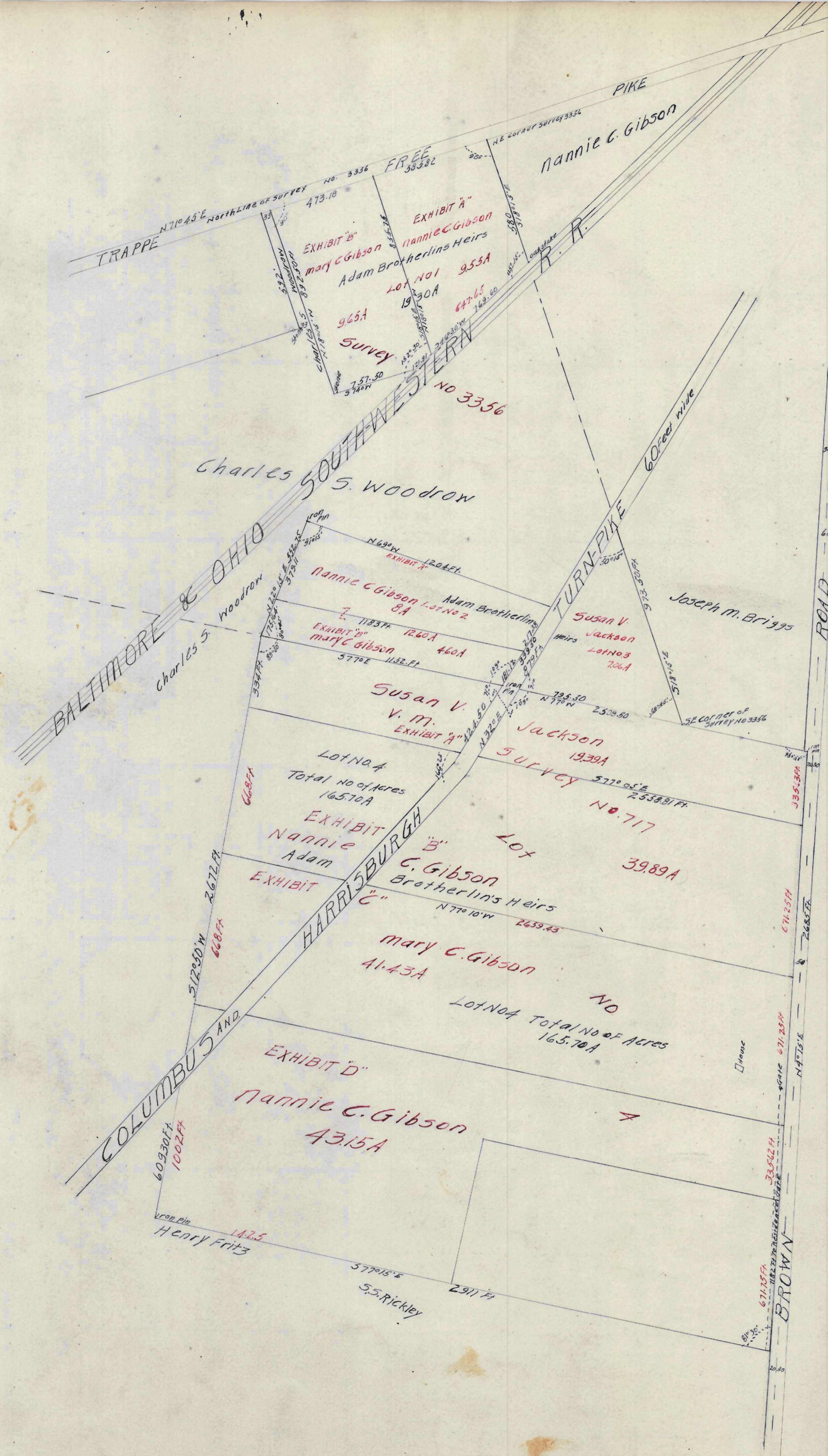


PLAT OF
MICHAEL CORBETTS HEIRS LANDS
GROVEPORT-OHIO.
SCALE 1" = 60' 00" APRIL 16TH 1920.
THE JENNINGS-LAWRENCE CO.
CIVIL & MUNICIPAL ENGINEERS
COLUMBUS - OHIO.



Plat showing the Partition
of Land made among the Heirs
of Adam Brotherlin dec'd made by
order of Court of common pleas
being parts of surveys 717 & 3356 M.D.
Franklin Township Franklin County Ohio
Surveyed August 1907 BY E.E. EGG
Surveyors C.E.