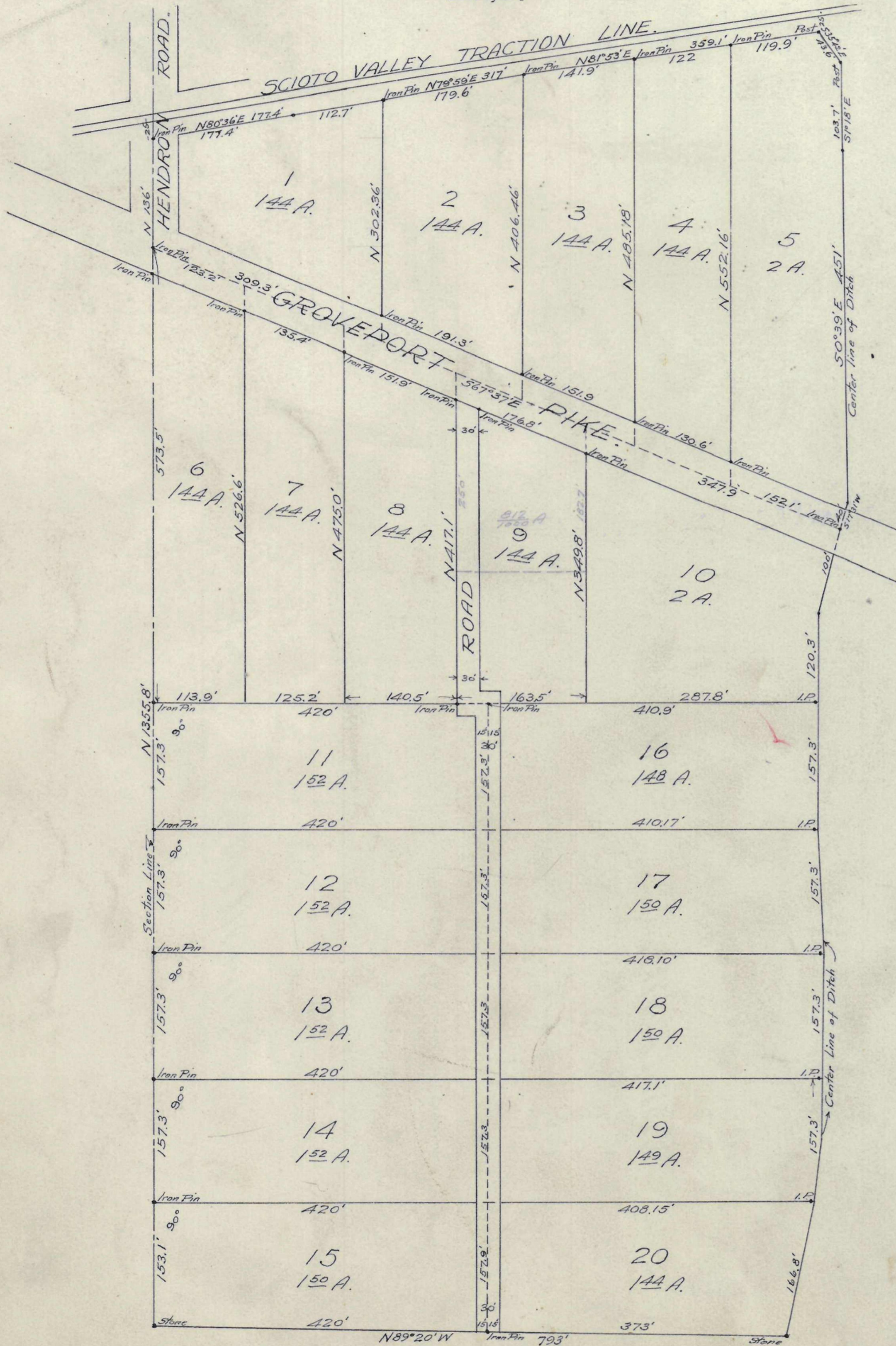


SUBDIVISION
of
DANIEL KESSLER FARM.
IN MADISON TWP., FRANKLIN CO.
PART-N.W. QUARTER SECTION NO.28.
SCALE 1"=100' JULY, 1921.
H.D. Metcalf,
Surveyor.



PLAT -08-
SUBDIVISION OF FREDERICK MILLER FARM.
MARION TWP. FRANKLIN COUNTY.
R-22, T-4, S.W. QR. SECT 2.
FEBRUARY 1923
H. D. Metcalf
Surveyor.
Scale 1"=200'

