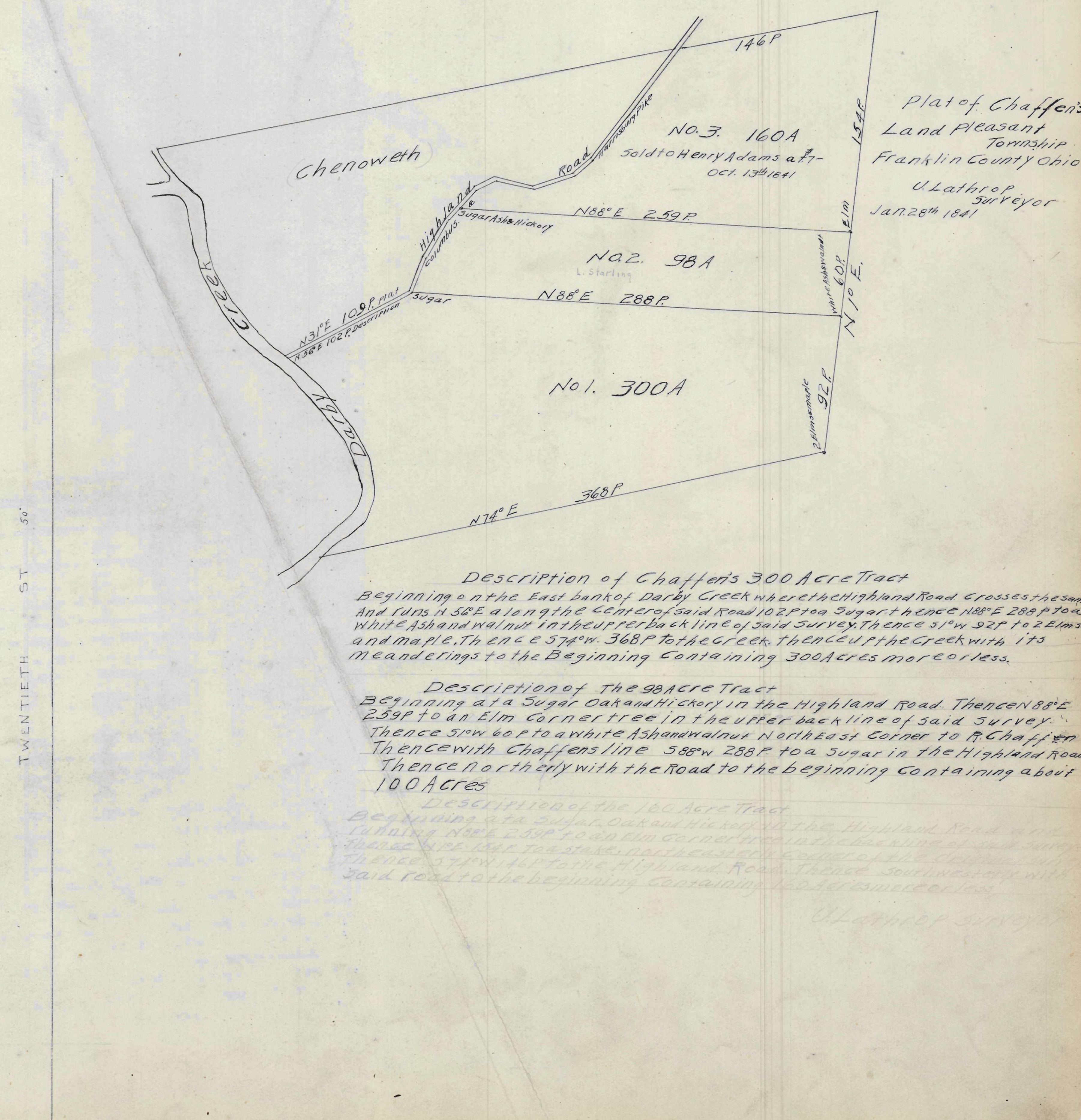
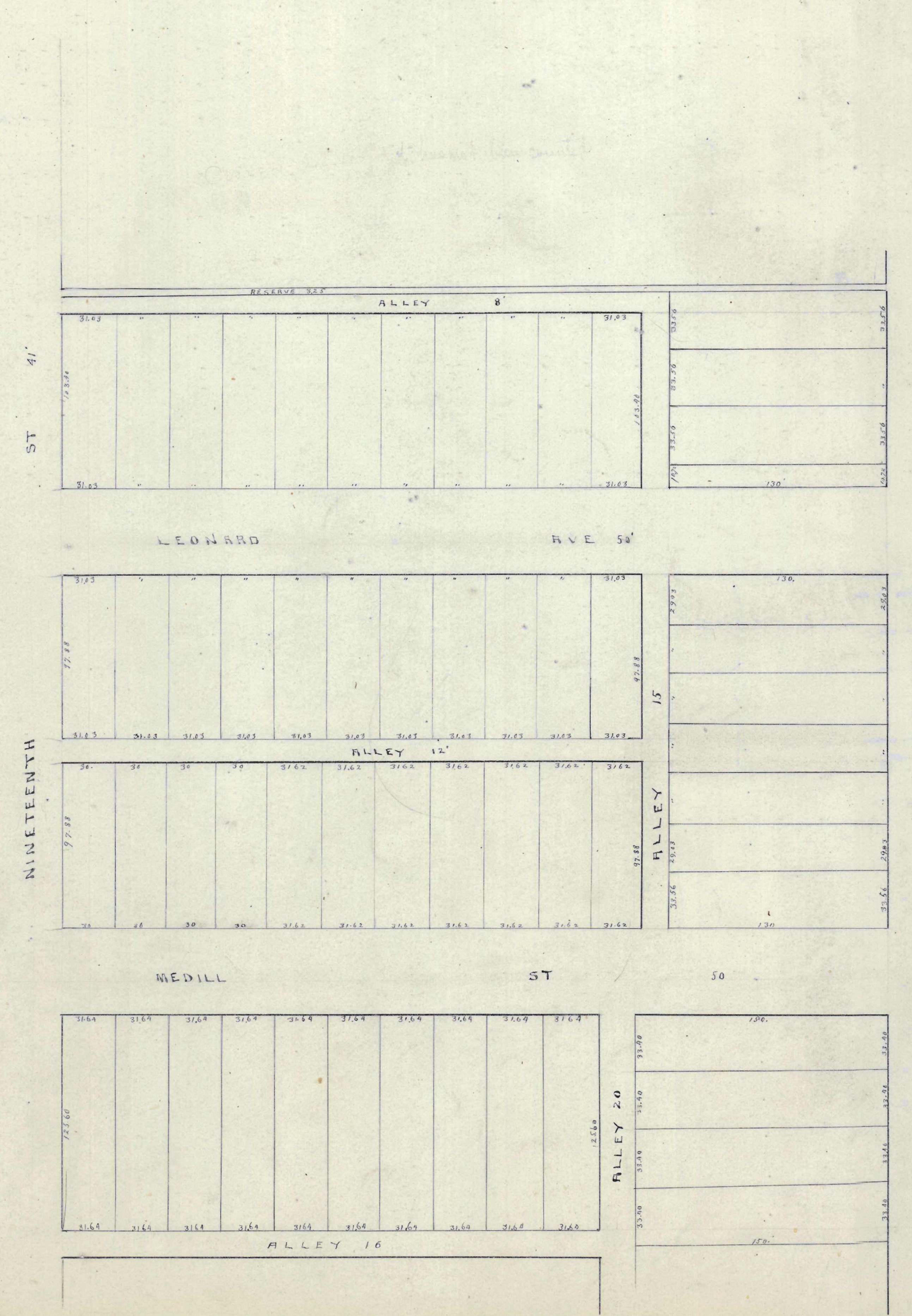


J. H. ANDERSON'S
 AMENDMENT PLAT
 OF
 T. W. T. ALMADGE'S
 North East Addition
 INDEX 501.0 J. Kimball, S.



Description of Chaffens 300 Acre Tract
 Beginning on the East bank of Darby Creek where the Highland Road crosses the same
 And runs N 58° E along the center of said Road 102 P to a Sugar thence N 88° E 288 P to a
 white Ash and Walnut in the upper back line of said Survey. Thence S 1° W 92 P to 2 Elms
 and maple. Thence S 74° W 368 P to the creek, thence up the Creek with its
 meanderings to the Beginning containing 300 Acres more or less.

Description of the 98 Acre Tract
 Beginning at a Sugar Oak and Hickory in the Highland Road. Thence N 88° E
 259 P to an Elm corner tree in the upper back line of said Survey.
 Thence S 1° W 60 P to a white Ash and Walnut Northeast Corner to R. Chaffens
 Thence with Chaffens line S 88° W 288 P to a Sugar in the Highland Road
 Thence northerly with the Road to the Beginning containing about
 100 Acres

Description of the 160 Acre Tract
 Beginning at a Sugar Oak and Hickory in the Highland Road and
 running N 88° E 259 P to an Elm corner tree in the back line of said Survey
 Thence S 1° W 92 P to 2 Elms and maple. Thence S 74° W 368 P to the Highland Road. Thence
 southwesterly with
 said road to the beginning containing 160 Acres more or less.

U. Lathrop Surveyor