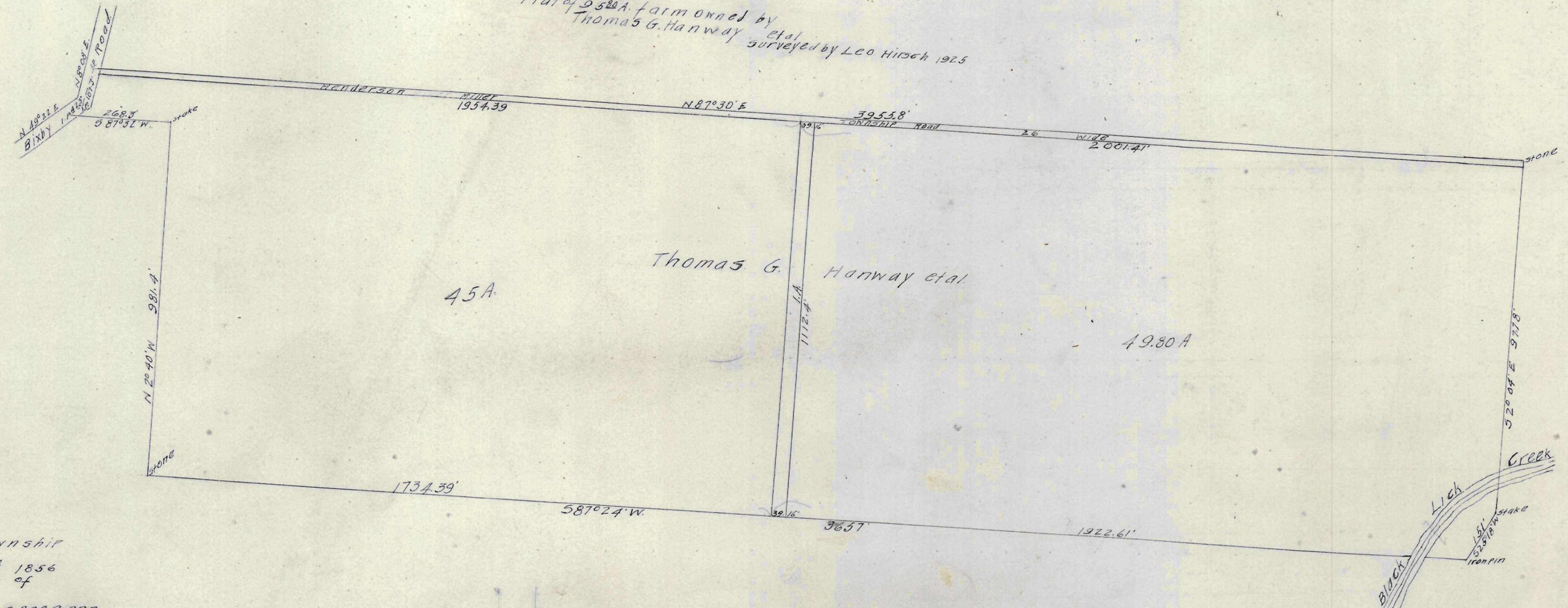


172.01  
1774.37  
1869.16  
3617.54

Plat of 262A farm owned by  
Thomas G. Hanway et al  
surveyed by Leo Hirsch 1925



Plat of W.F. Brecks Land  
situated in the vicinity of  
Greene City in Jackson Township  
Franklin County Ohio  
Surveyed September 30th 1856  
by W.W. Pollard Surveyor of  
Franklin County Ohio  
Superior Court Record page 397

