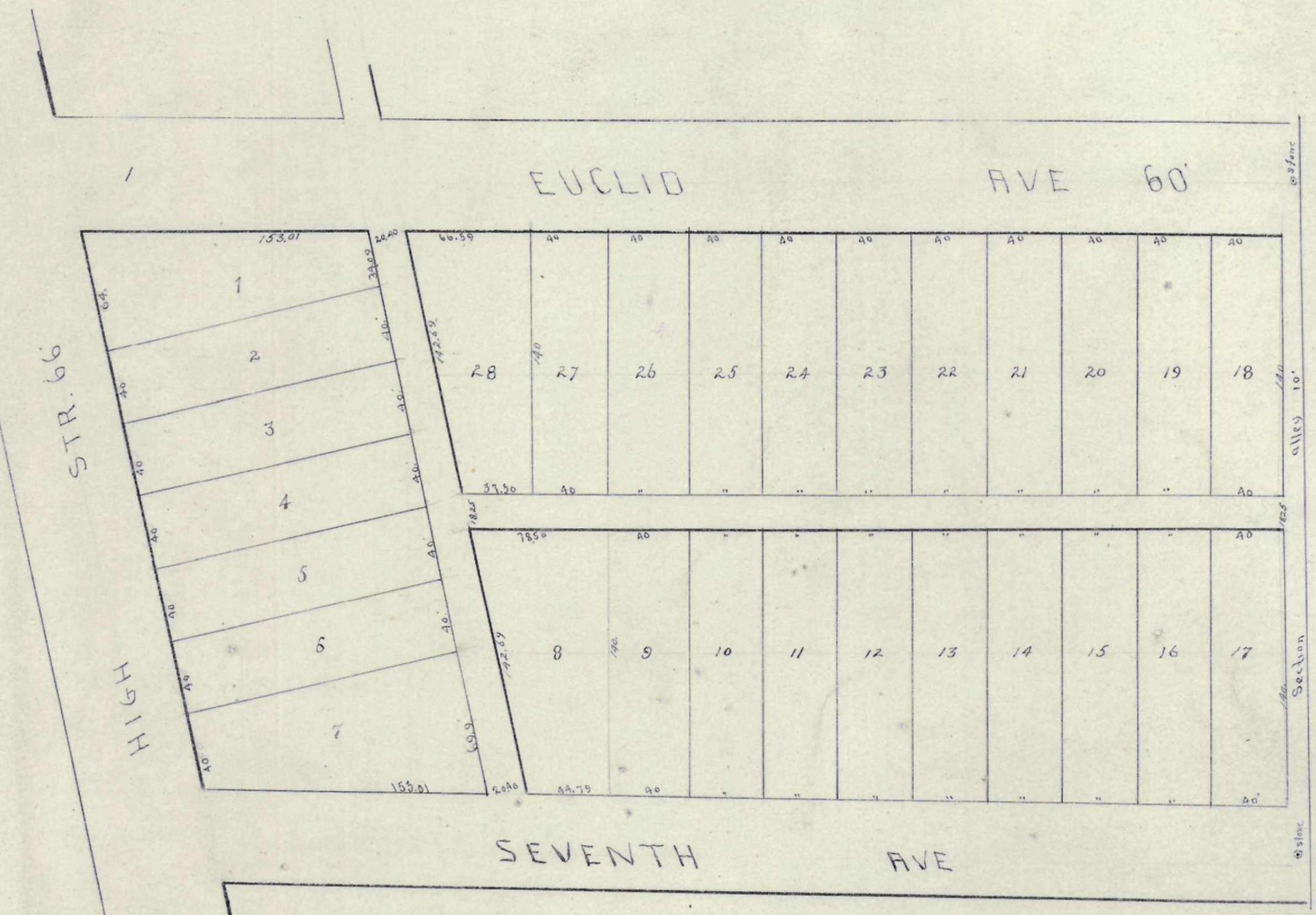
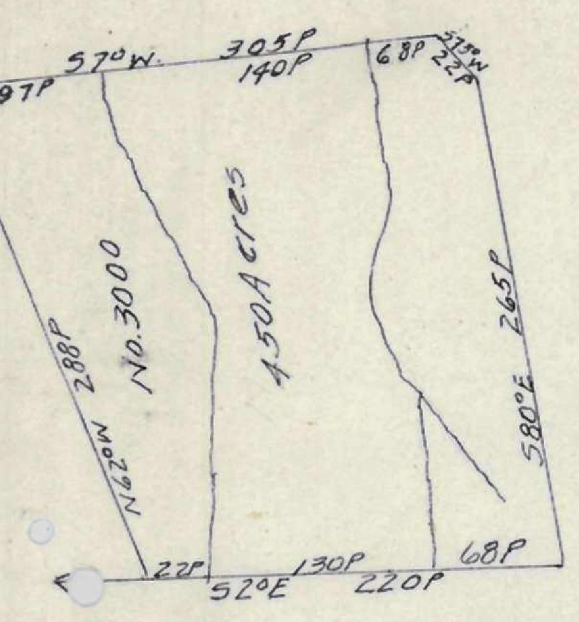
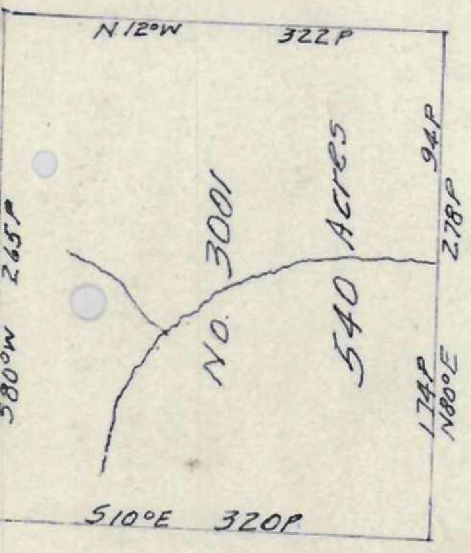
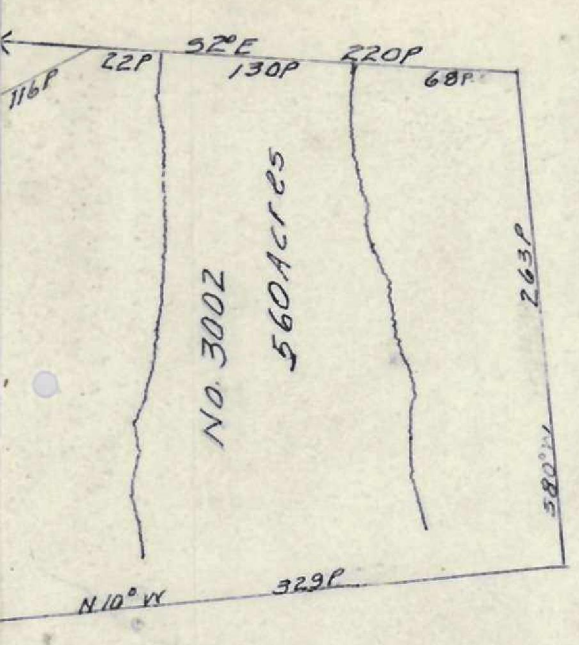
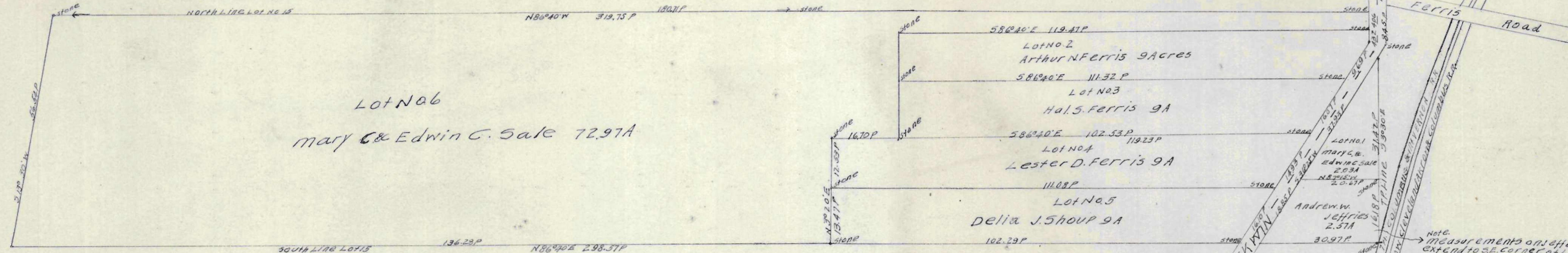
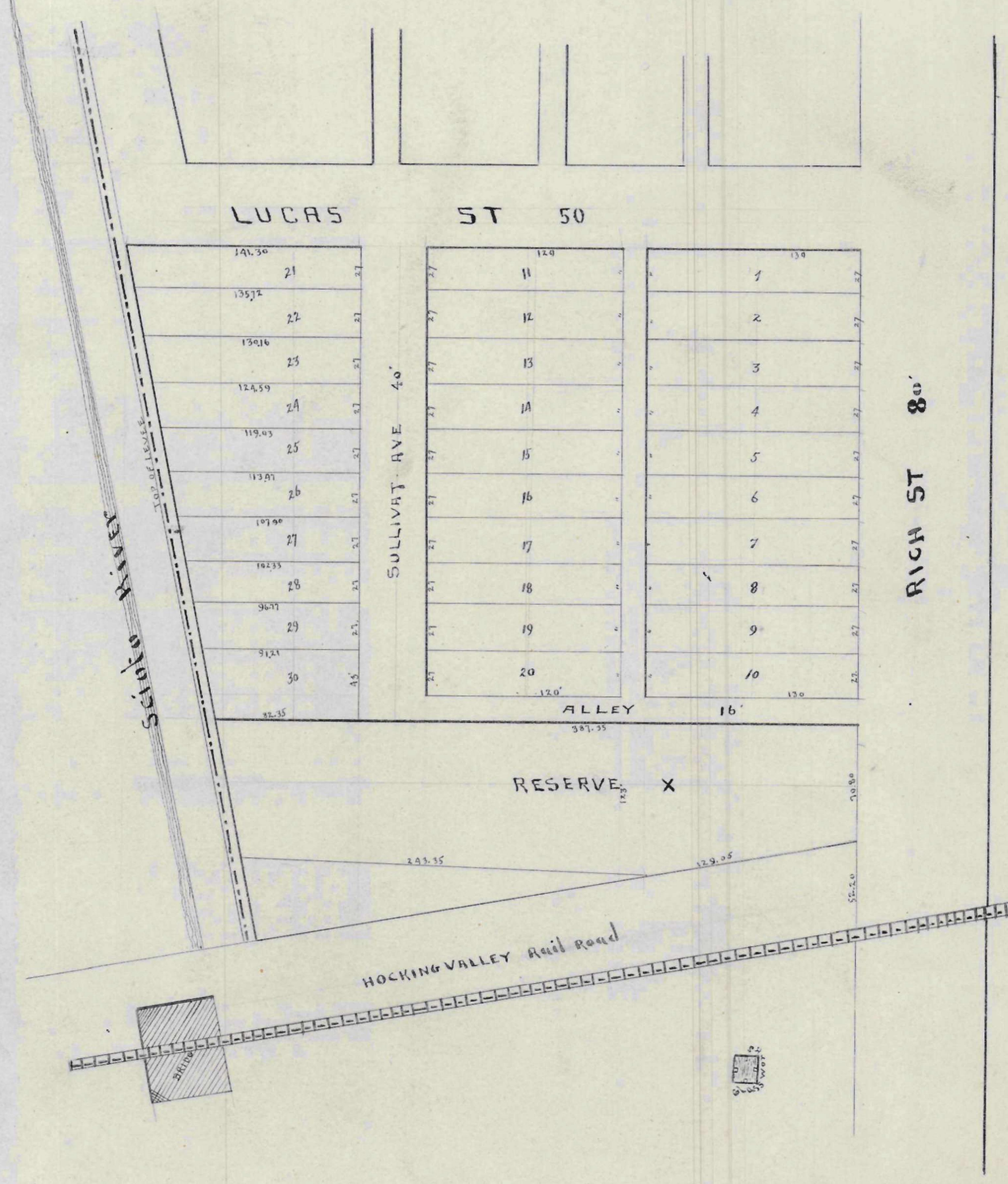
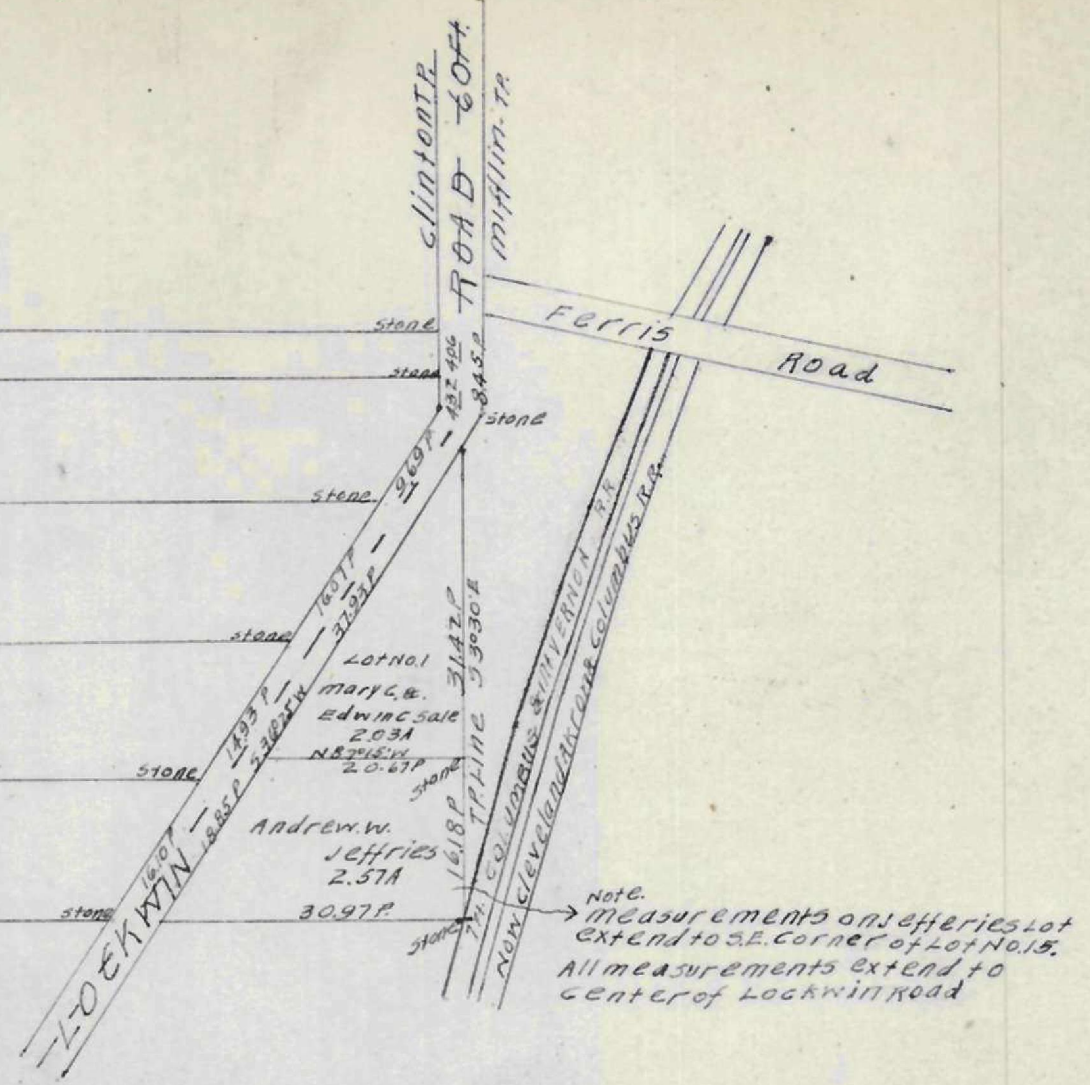
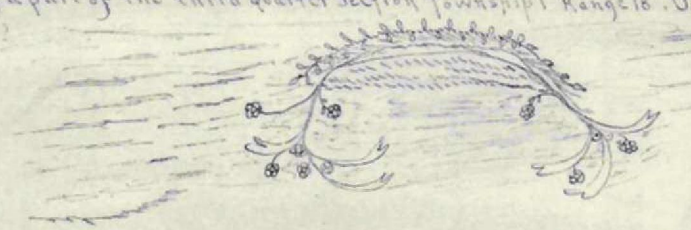


Plat of Partition of
Lucretia C. Ferris Farm
part of Lot No. 15, 1st QTR, R18 USML and
Clinton Township Franklin County Ohio H. M. Gates
Surveyor May 1902



PLAT
OF
J. MARLETTI'S

W. H. HIGH ST. ADD. TO THE CITY OF COLUMBUS, O.
being a part of the third quarter section Township Range, U.S.M. Lands containing Acres
J. Marletti C.S.
INDEX



W. MORRISON

ADD