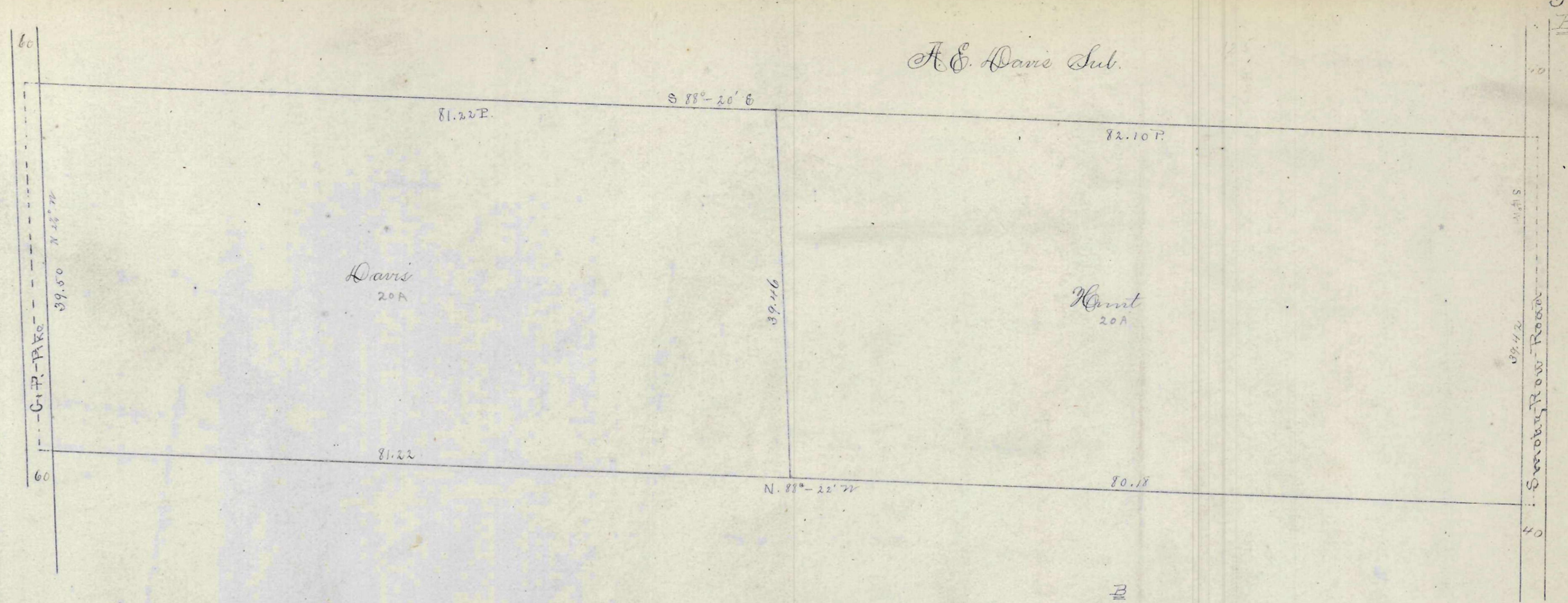
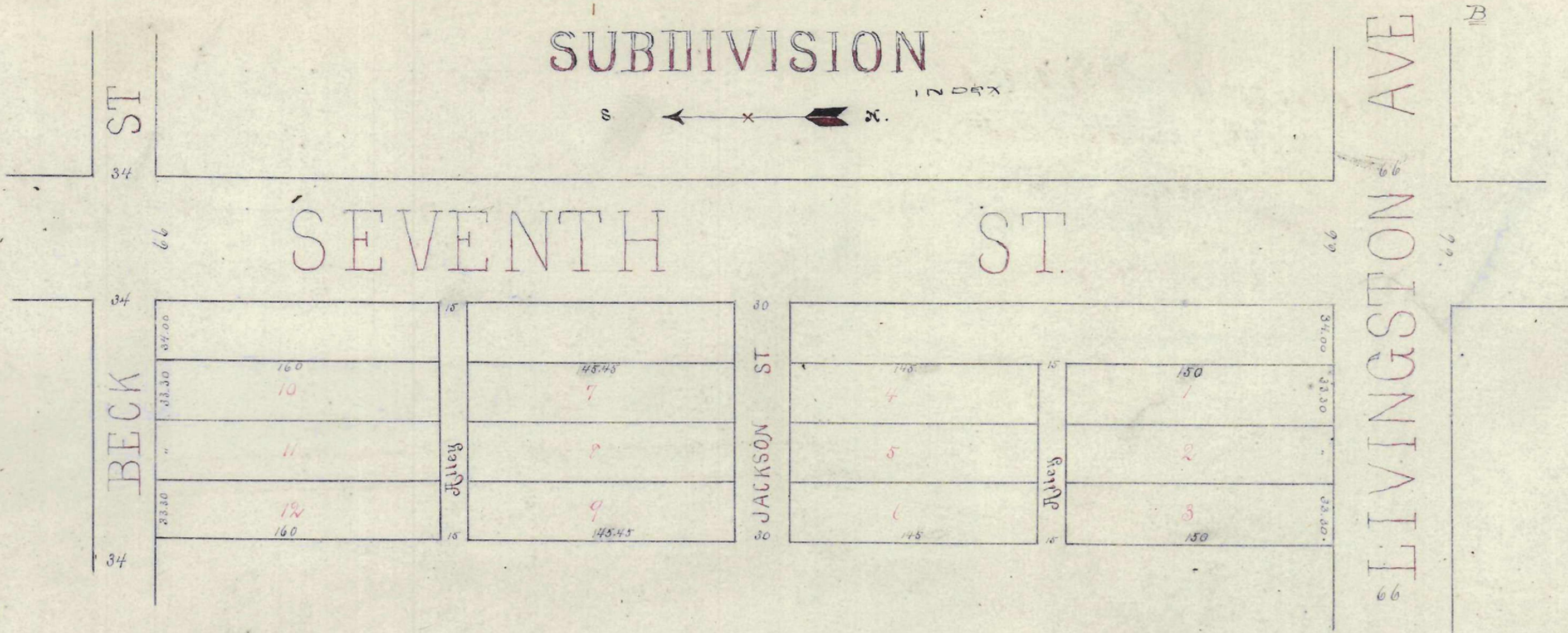


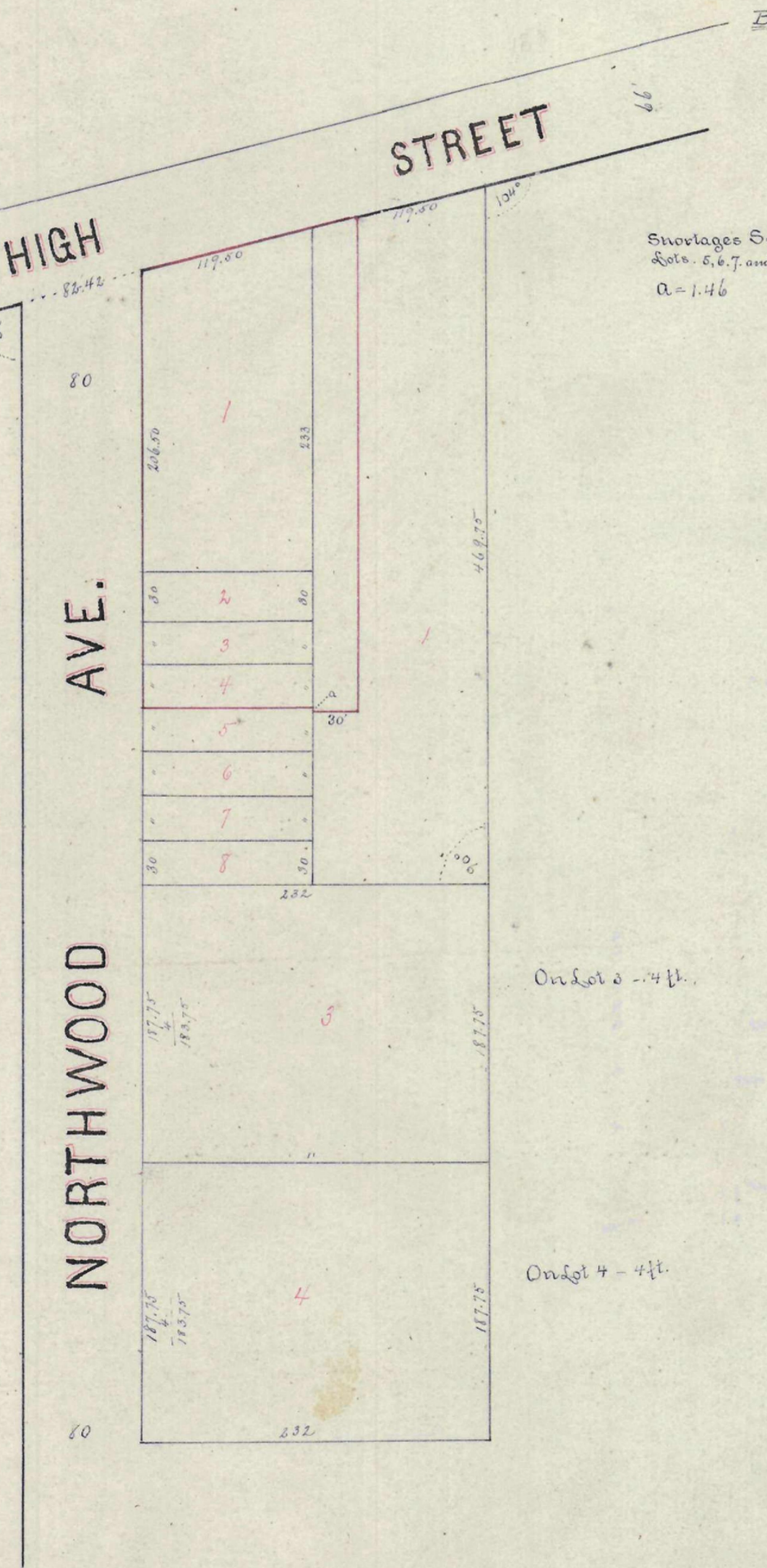
CHARLES KEMMLER'S
SUBDIVISION

INDEX



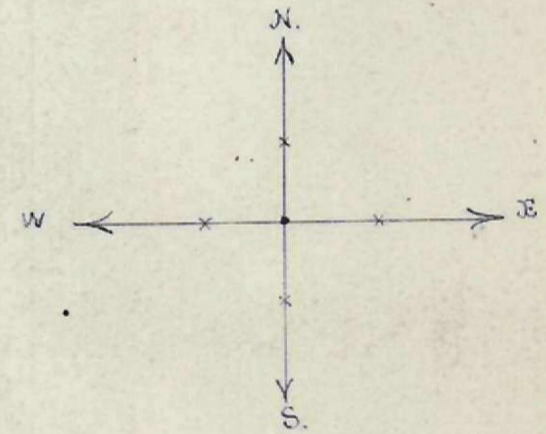
HIGH STREET

NORTHWOOD AVE.



Snorlagee School property 6.19
Rate 6.67 and 8 of 0.65% each
a = 1.46

A.P. Woodruff's Sub.
of Lots 1-8 of Chaffin
Mc Auburn Addition.
INDEX



MRS. J. OB. RENICK'S
SUBDIVISION

INDEX