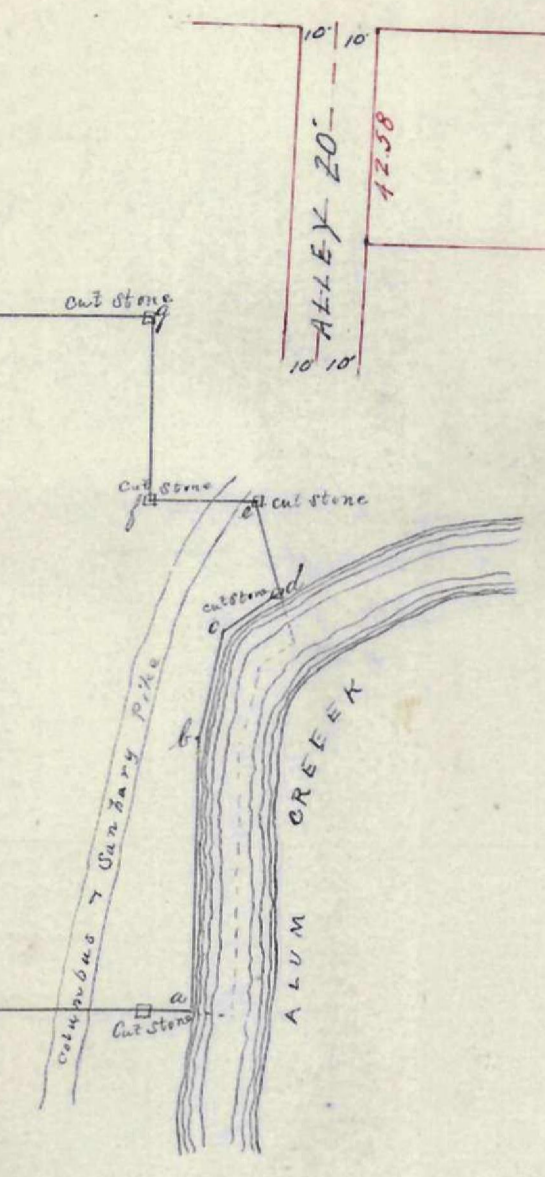
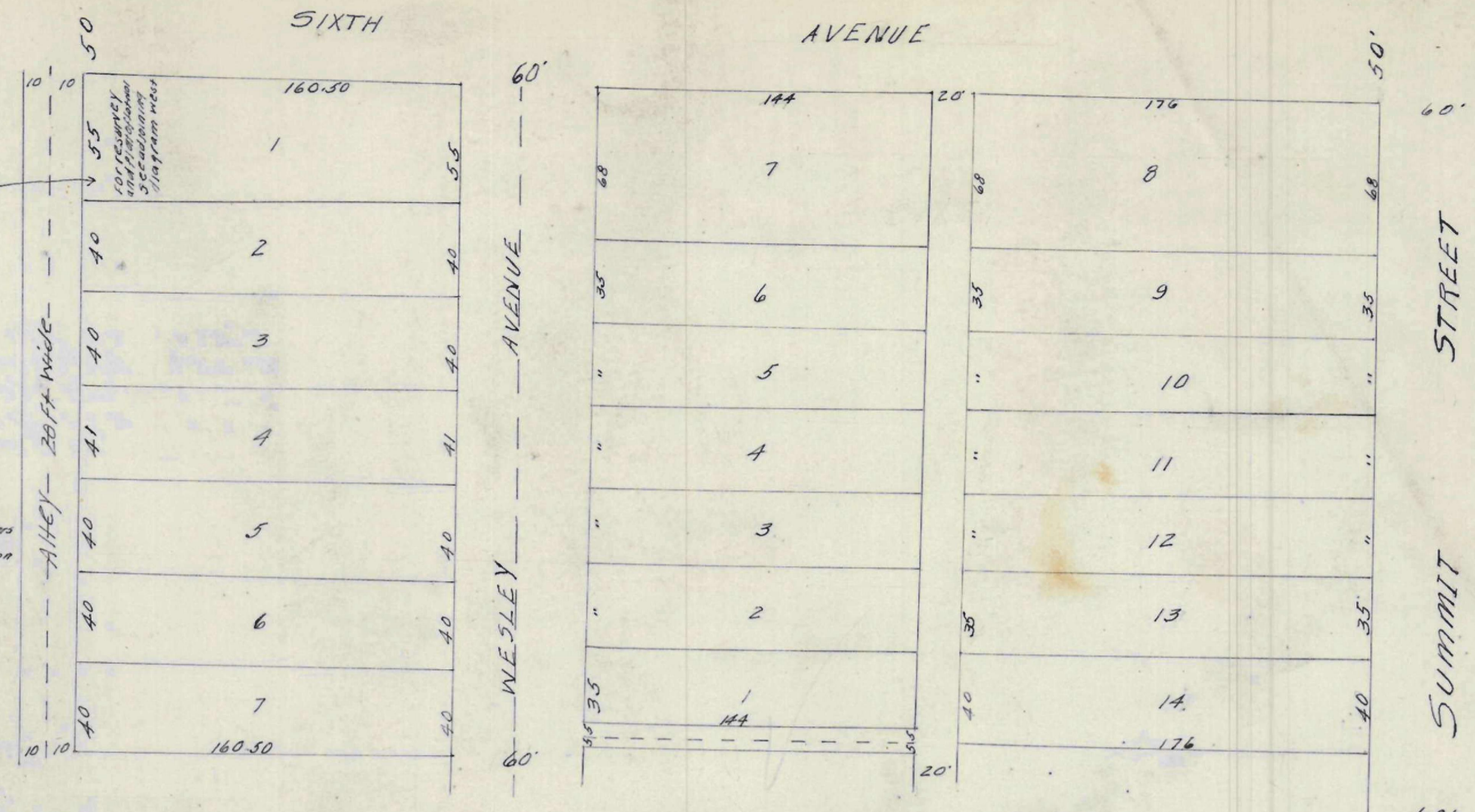


ROBERT J LEONARD
200 A.

EXPLANATIONS
From a-b - N 57° E 78.87 chains
b-c - N 14° E 1.85
c-d - N 55° E 2.75
d-e - N 14° W 2.85
e-f - N 87° W 2.75
f-g - N 8° E 1.17



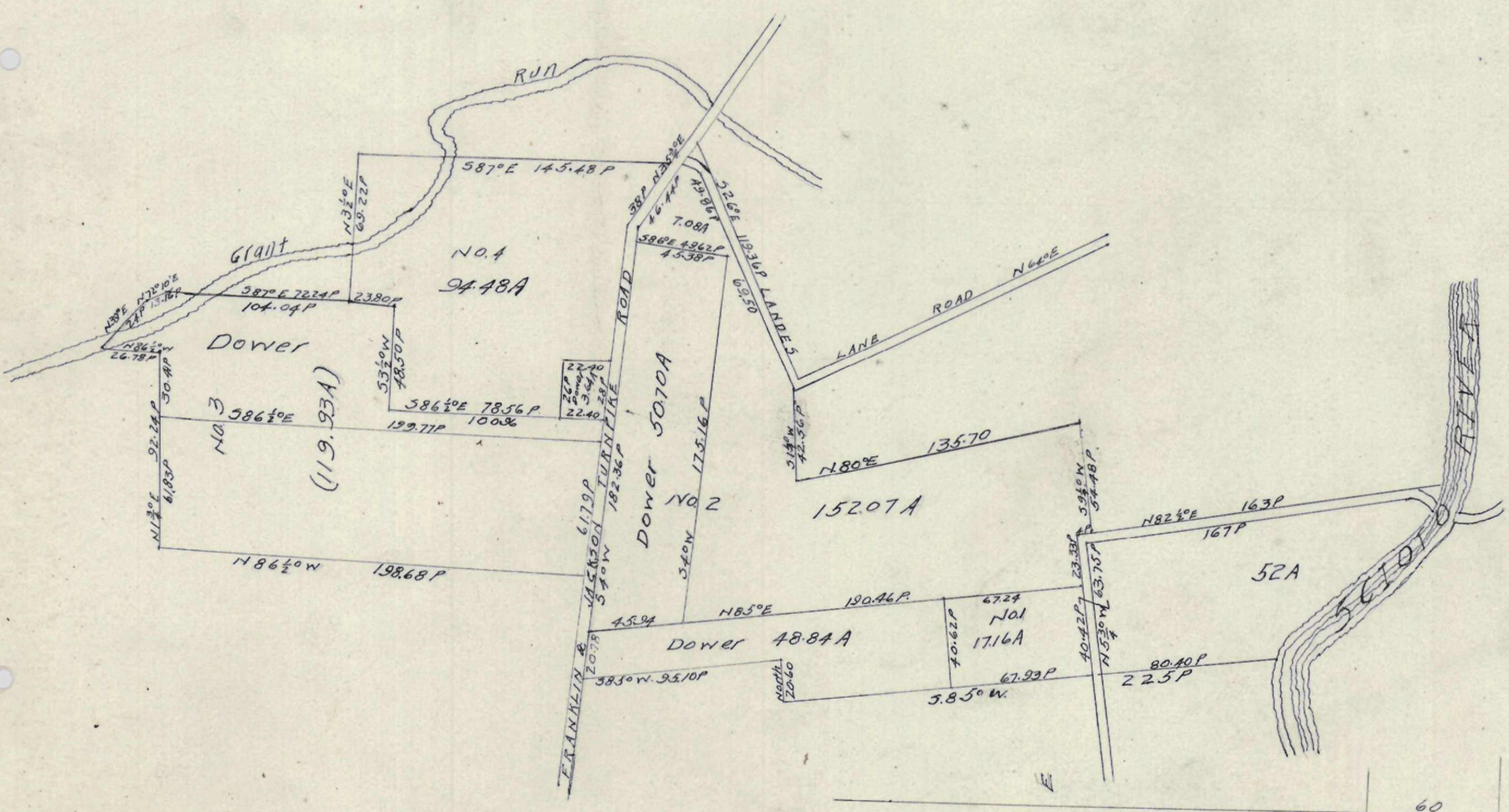
D. HOLLICKERS SUBDIVISION OF THE SOUTHWEST CORNER OF A CERTAIN SUBDIVISION OF 20 ACRES OF LAND BEING THE 1/4 SECTION 10, T. 13 N. R. 13 W. S. 25



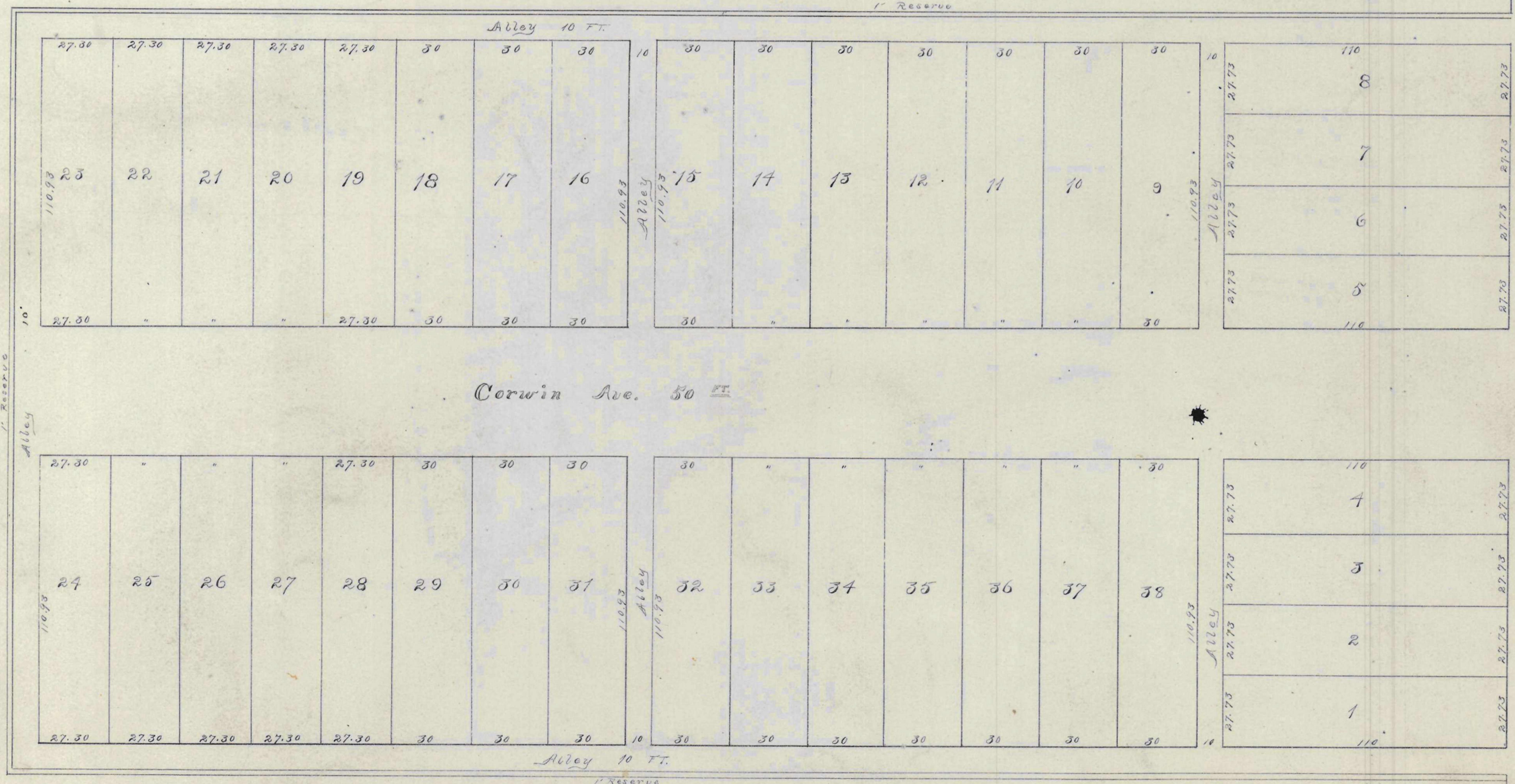
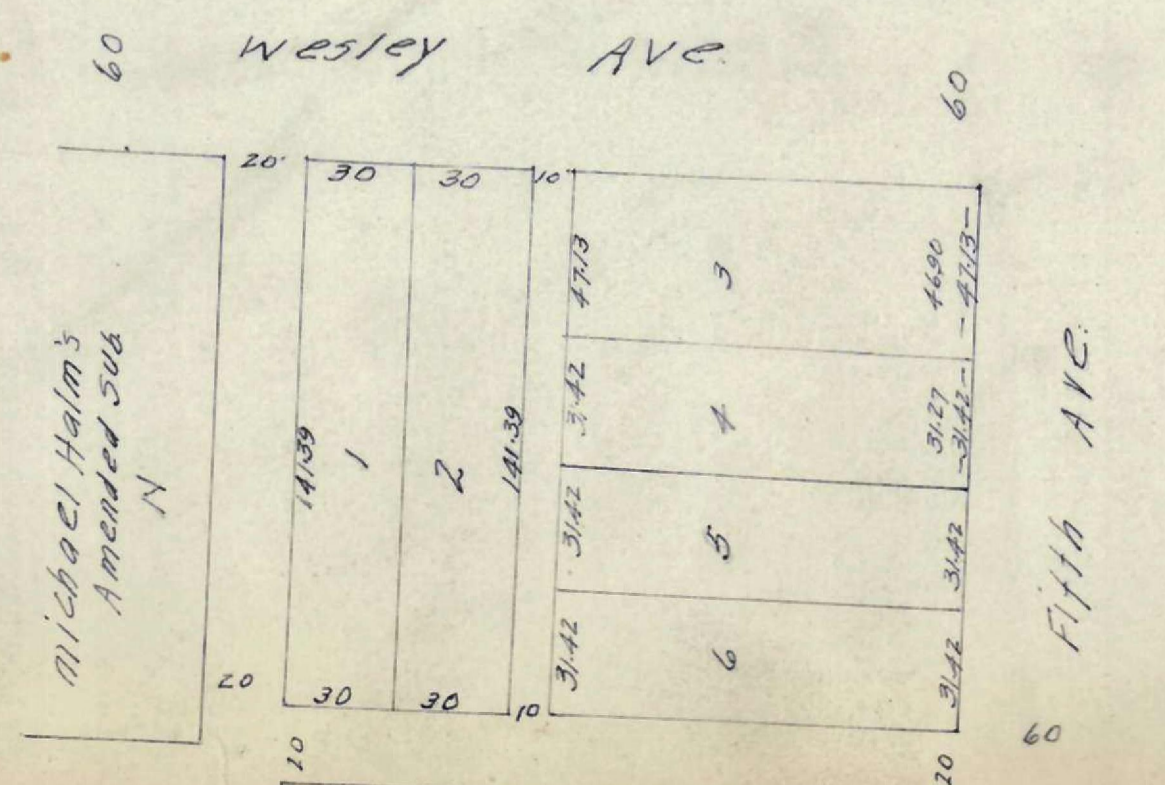
LUCIAN LINDSAY'S

3RD AVENUE ADD.
Surveyed Apr 2 1888 J. Kinnear Co.S.

Robert J Leonard's Land
in Quarter Town 5 Town 1 Range 14
W. S. Military Lands, Mifflin Twp.
Surveyed Apr 5 1888 G.S.I. Deputy for J. Kinnear Co.S.
INDEX



PARTITION OF EPHRIAM BORROR'S
ESTATE JACKSON TOWNSHIP
FRANKLIN COUNTY OHIO
Surveyed DECEMBER 1862
By G.SINNIS SURVEYOR



Reed Ave

D. HOLLICKERS SUBDIVISION OF THE SOUTHWEST CORNER OF A CERTAIN SUBDIVISION OF 20 ACRES OF LAND BEING THE 1/4 SECTION 10, T. 13 N. R. 13 W. S. 25