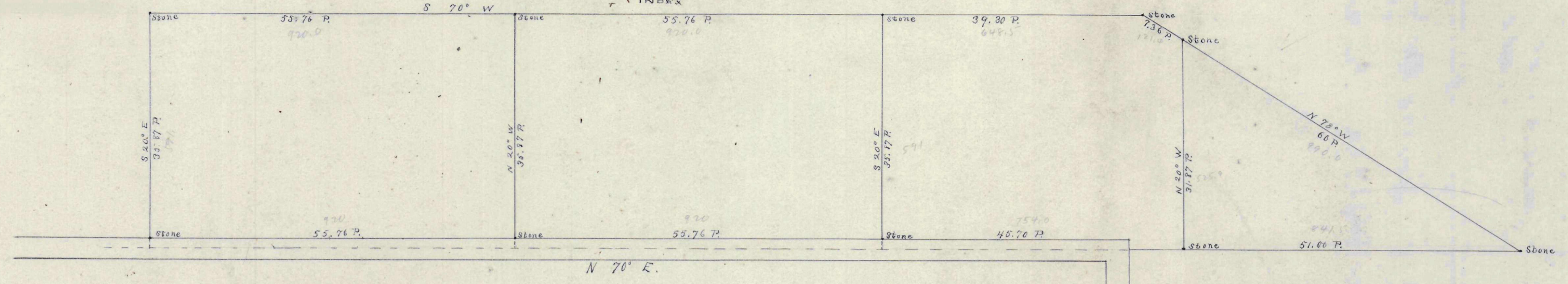
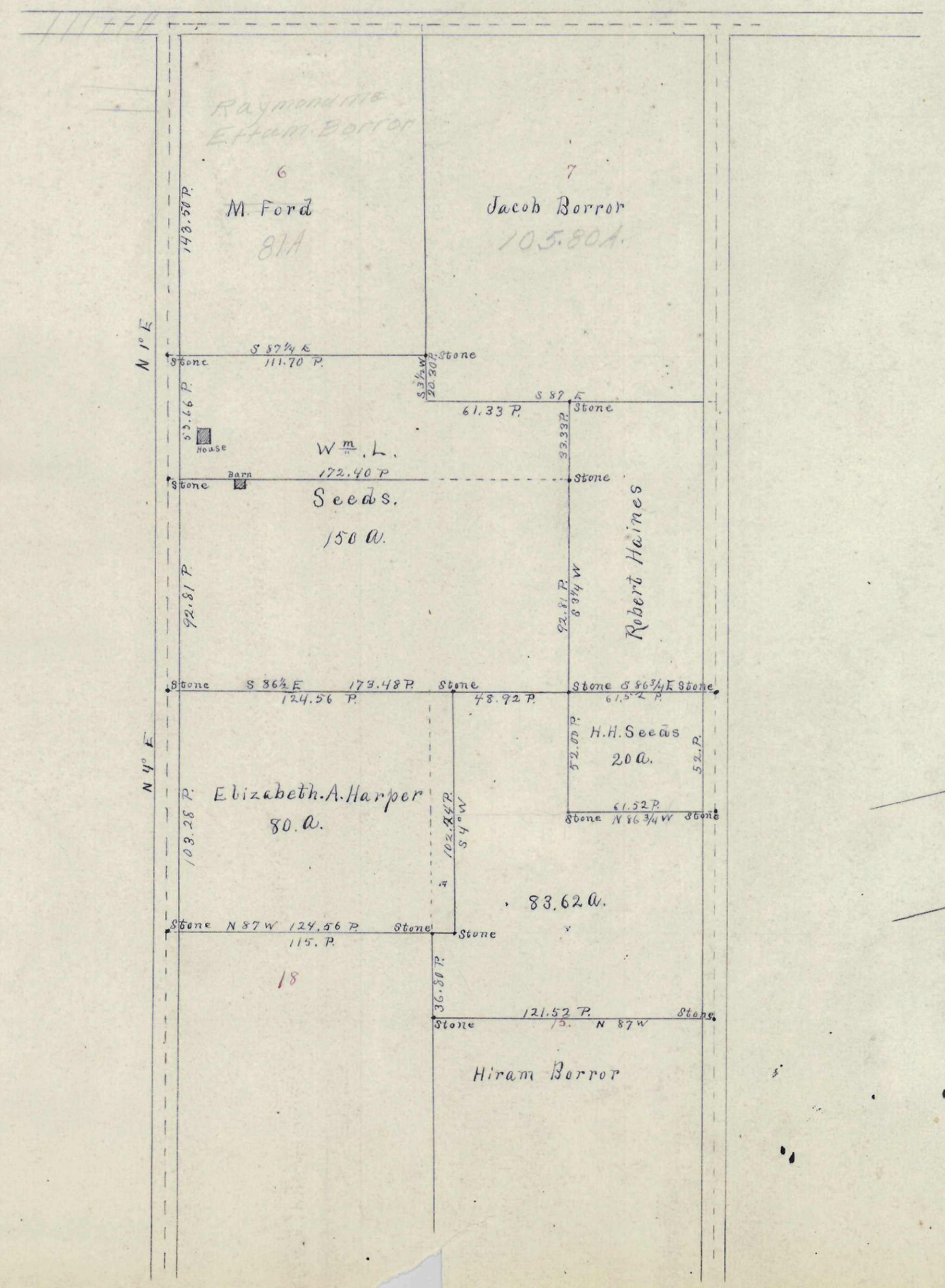


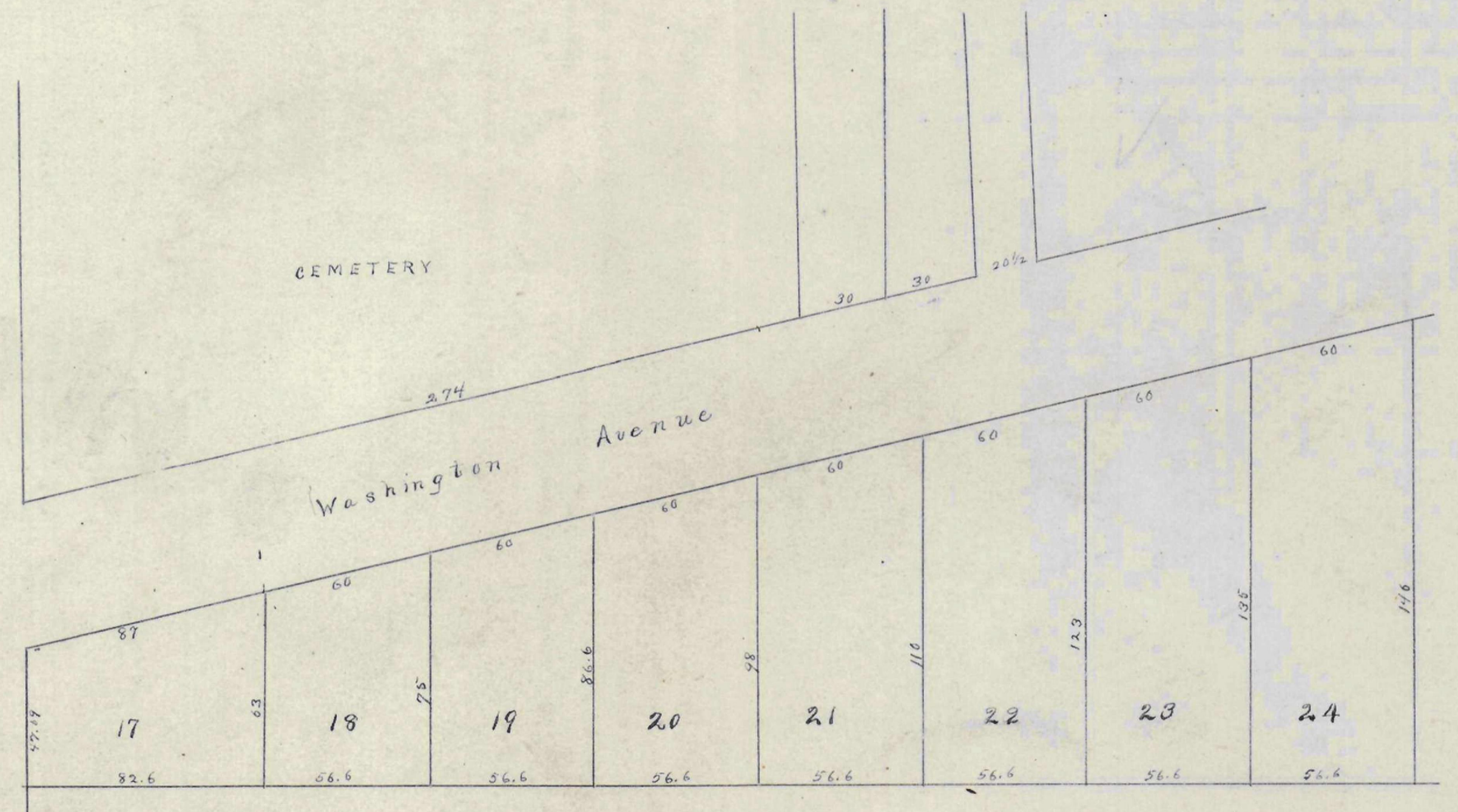
FRANKENBERG  
LAND  
Survey N° 8356  
Franklin Tp.  
Sept 16 1887 J. Kinnear, F.C.S.



W<sup>m</sup> L. Seeds  
LAND  
Jackson Township  
Aug 27 1887 J. Kinnear F.C.S.



at Vernon Ave.



JARVIS'  
2<sup>nd</sup> Add.  
J. Kinnear  
per E. E. Hegg INDEX

PLAT  
of  
James Hall's Farm  
Partition among the heirs.  
Hiffelin Tp. Quarter 3.  
Range 17, N. S. Military Land.  
By  
Josiah Kinnear F.C.S.  
E. F. Kinnear Depty.  
INDEX

