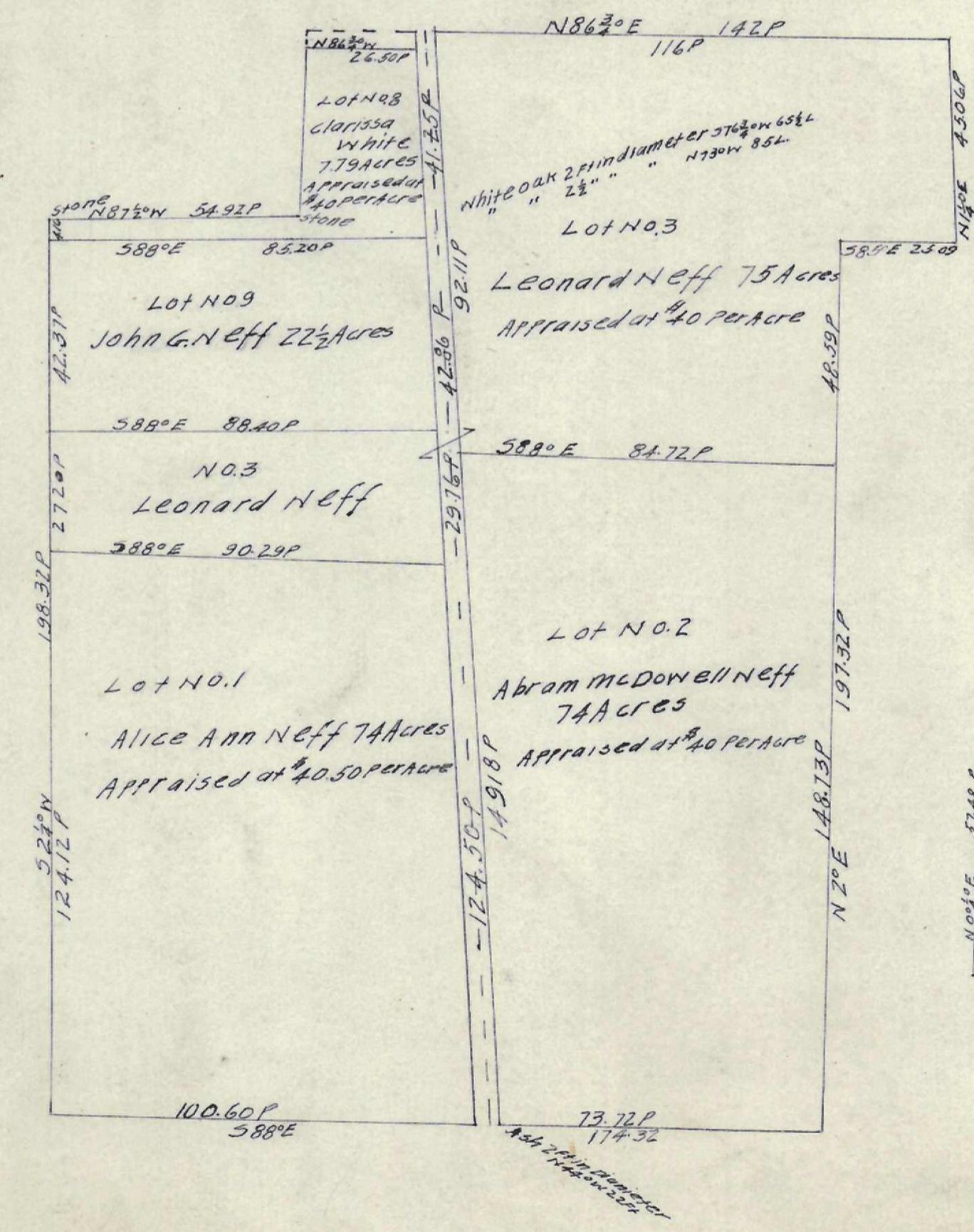
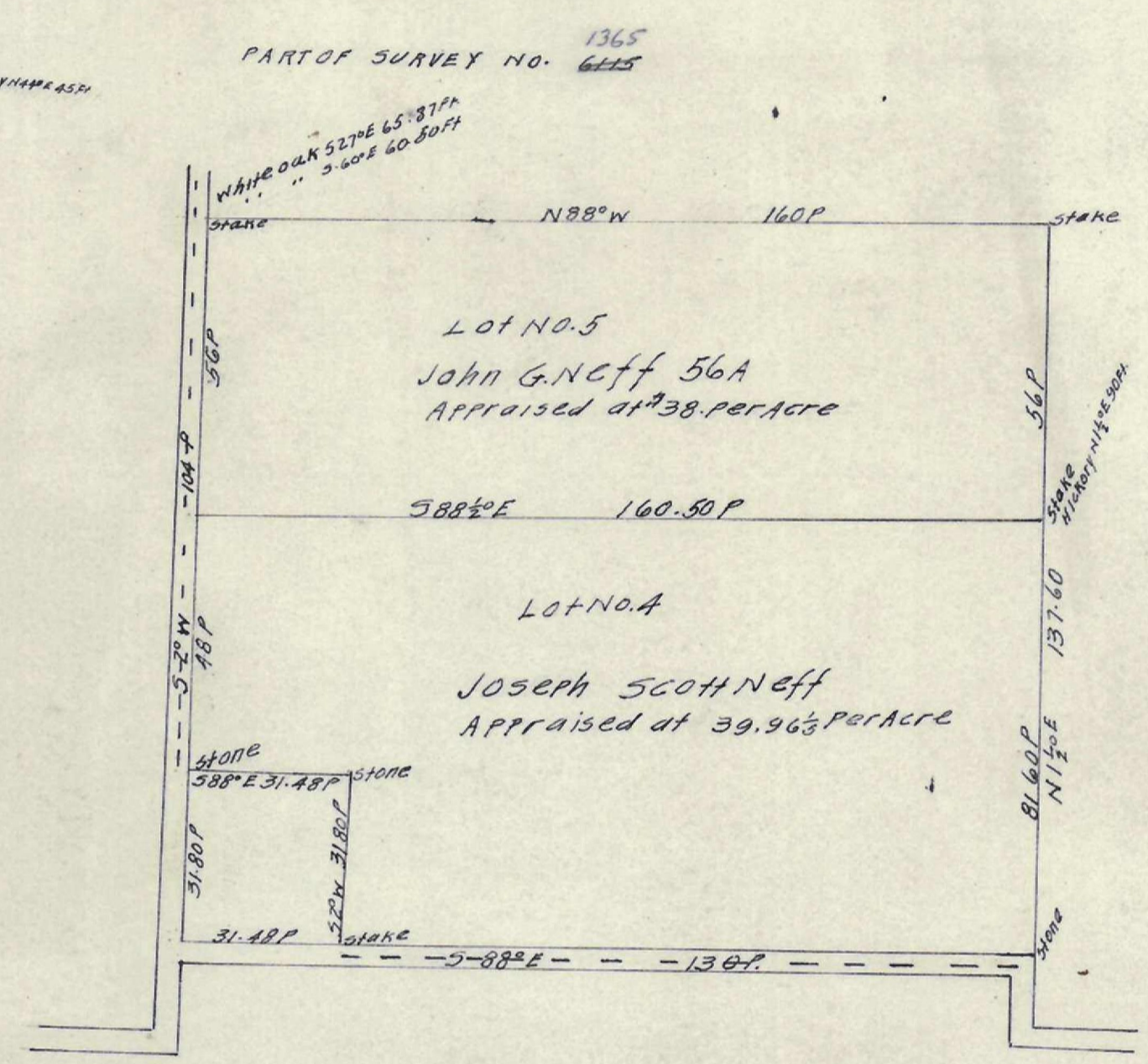
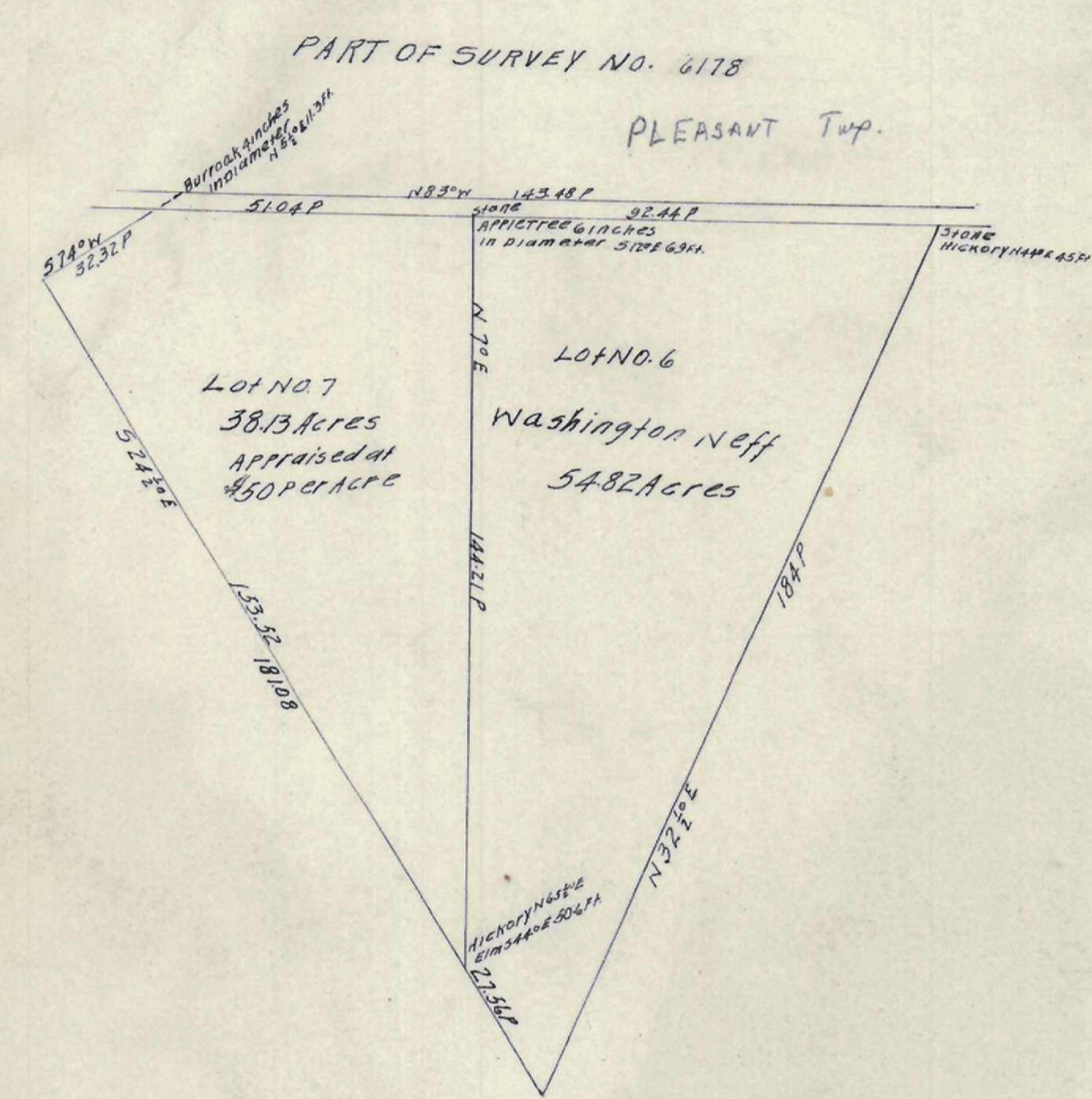


Subdivision of the Susan Herr Estate
Hamilton & Madison Townships
Franklin County Ohio

PLAT OF THE SUBDIVISION OF J.G. NEFF'S FARM
JACKSON TOWNSHIP FRANKLIN COUNTY OHIO



NOTE: STAMP
CIVIL ENGINEER
FRANKLIN COUNTY OHIO
NO. 12345
DATE 1-1-1906

