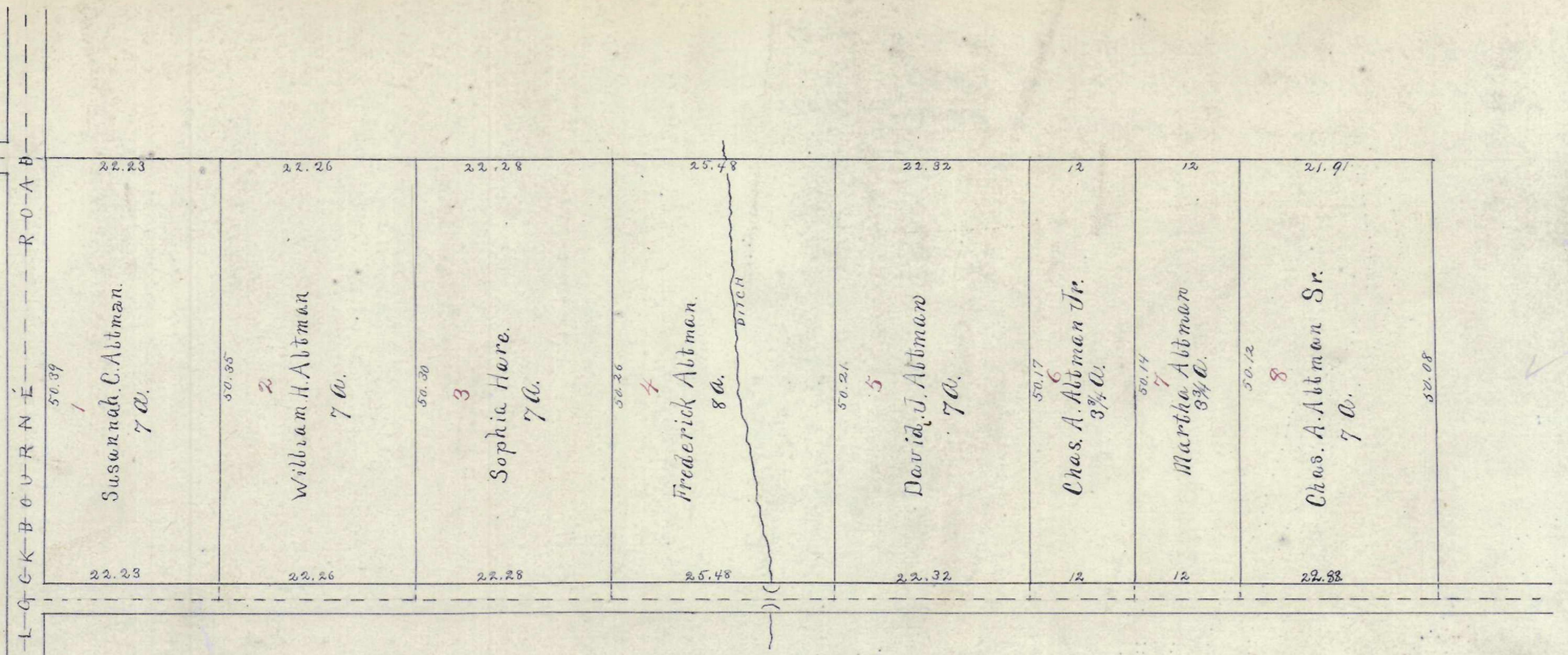
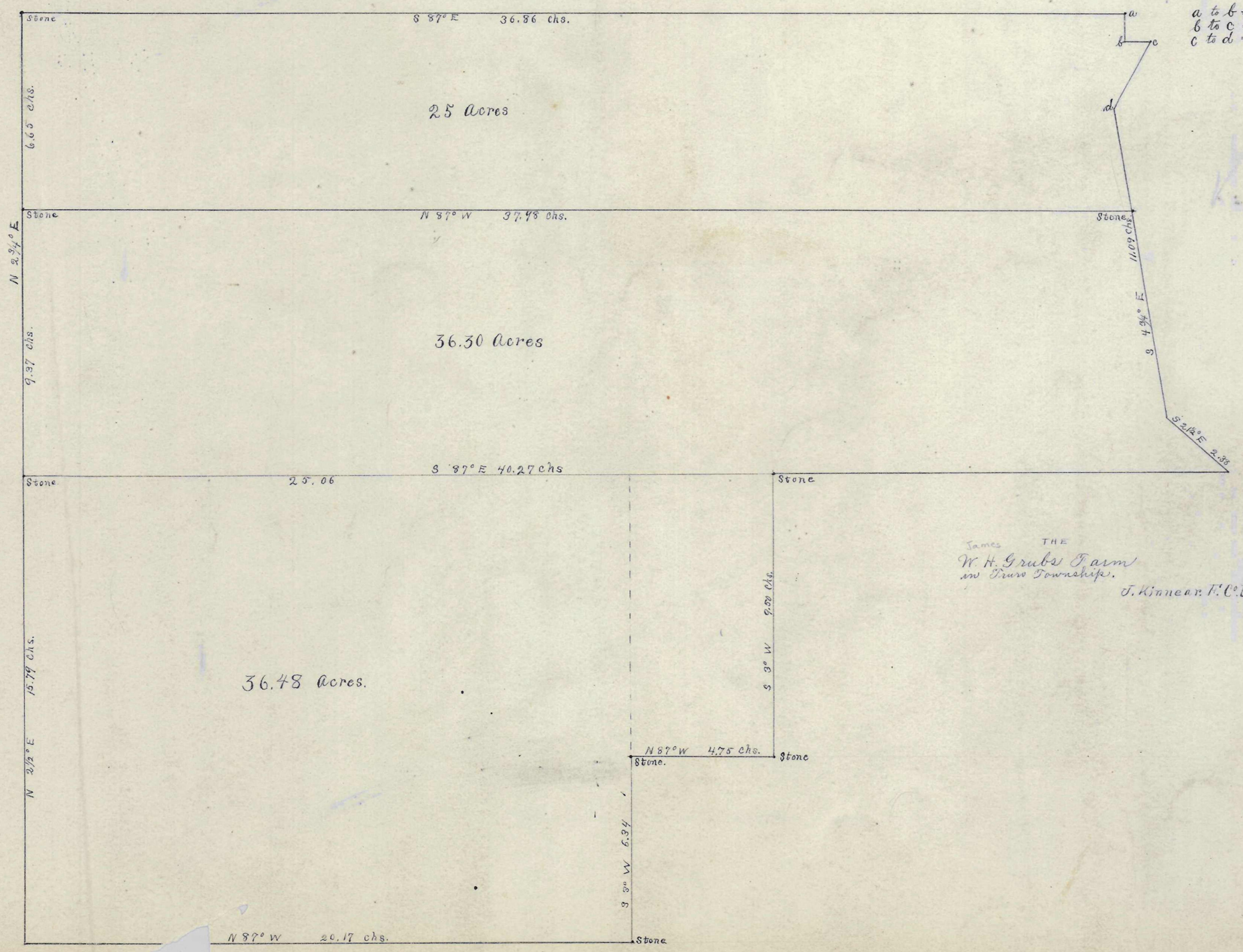


SUBDIVISION
 of
M. Held
 LAND
 Aug 17 1897. J. Kinnear F.C.S.
 Marion Tp. INDIAN



Partition
 of the
 Altman Farm.
 Made on 17th Dec 1897 by
 R.S.I. Deputy for J. Kinnear F.C.S.

25
 35.130
 136.48
 97.78



a to b = South 1.88 chs
 b to c = S 82° E 0.75 "
 c to d = S 88° W 2.00 "

James THE
 W. H. Grubbs Farm
 in Burr Township.
 J. Kinnear F.C.S.

