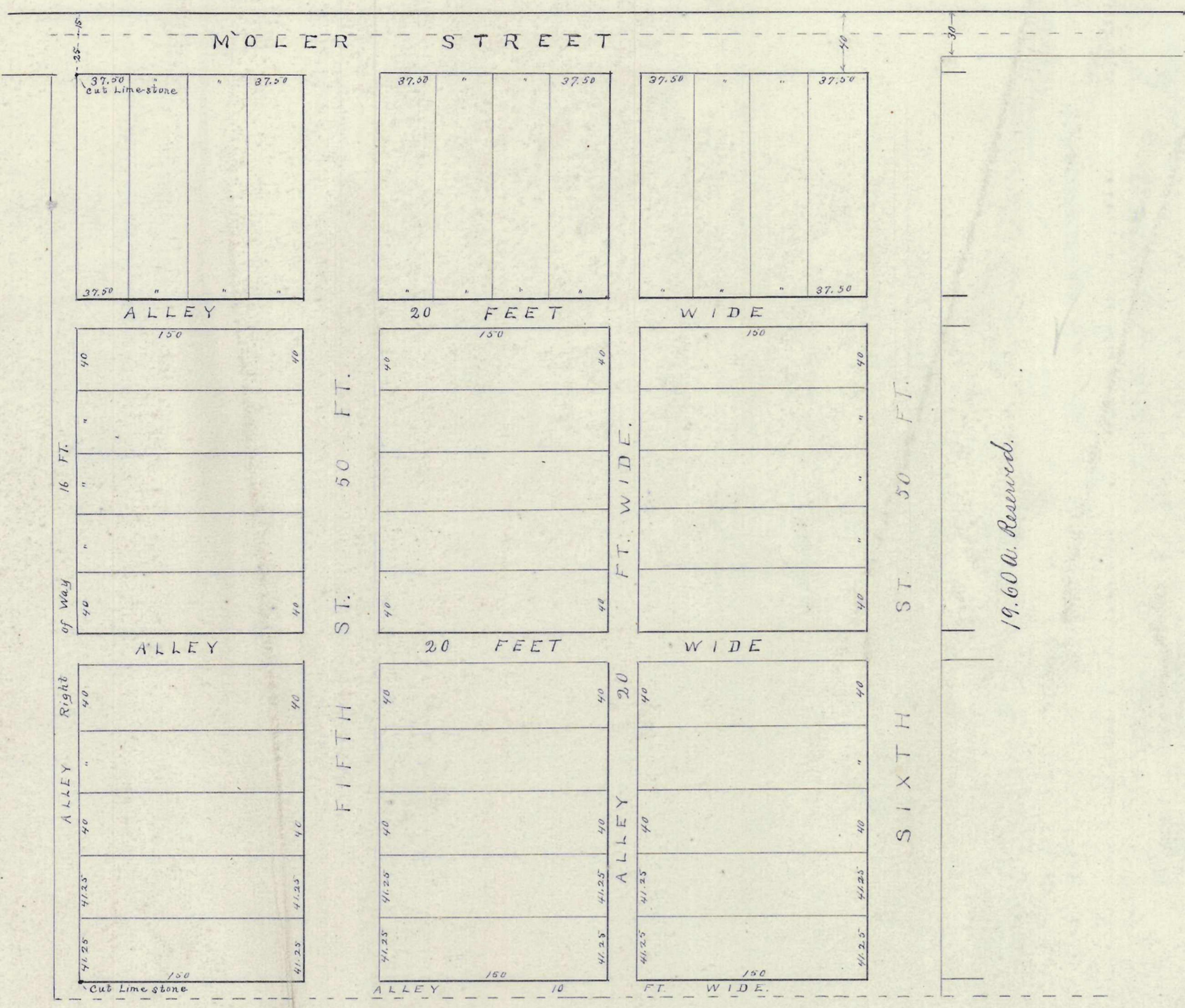


W^m. Merion's SUBDIVISION

of a part of Half Sections no 42,
Town 5 Range 22, Refuge lands.

J. Kinnear County Surveyor.
INDEX

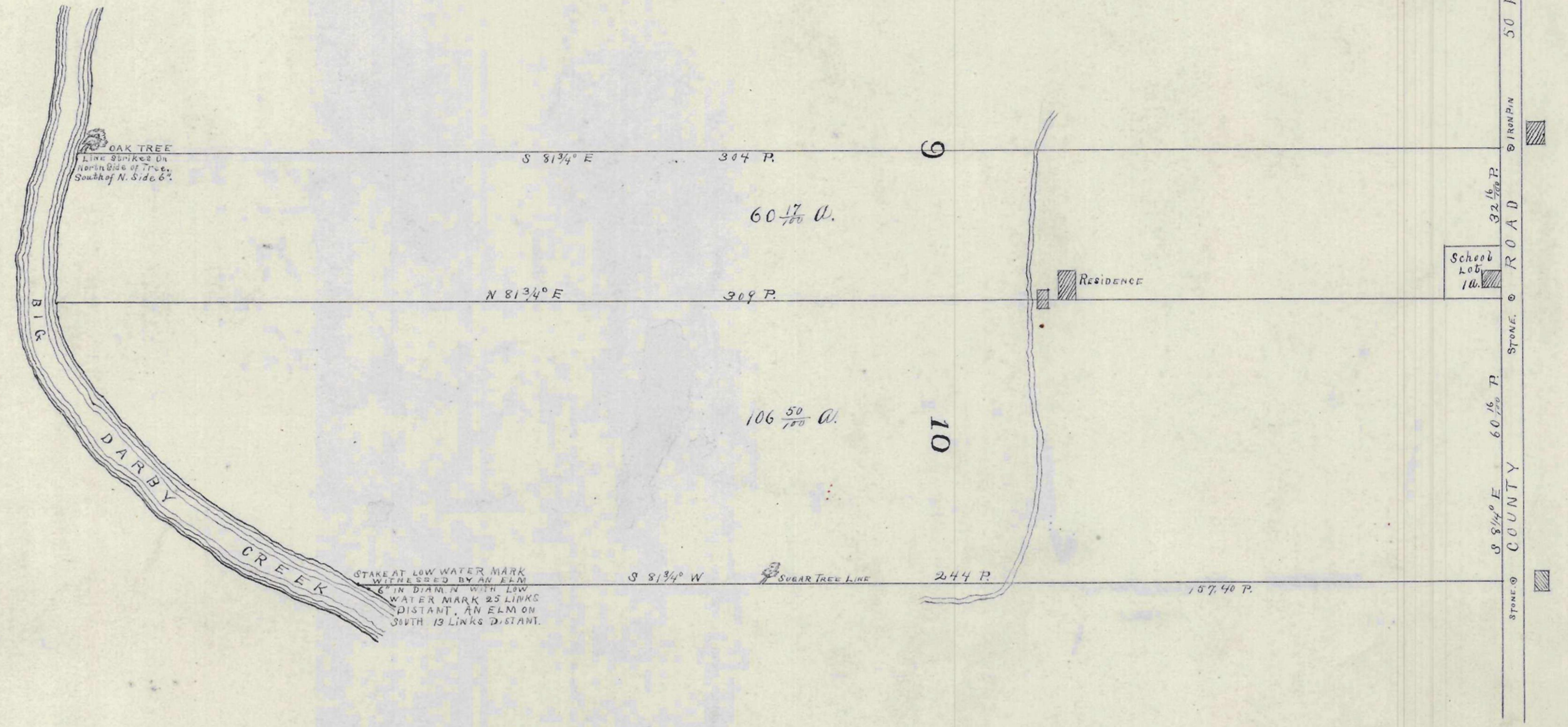


JACOB SCHAEFFING'S

PRAIRIE FARM

PLEASANT TP. FRANKLIN Co.

J. Kinnear County Surveyor.
INDEX



G.S. & S.G. Innis'

SUBDIVISION
of a part of Half Sections 42143, Town 5
Range 22, Marion Tp. Franklin Co. O.

J. Kinnear County Surveyor.
INDEX

