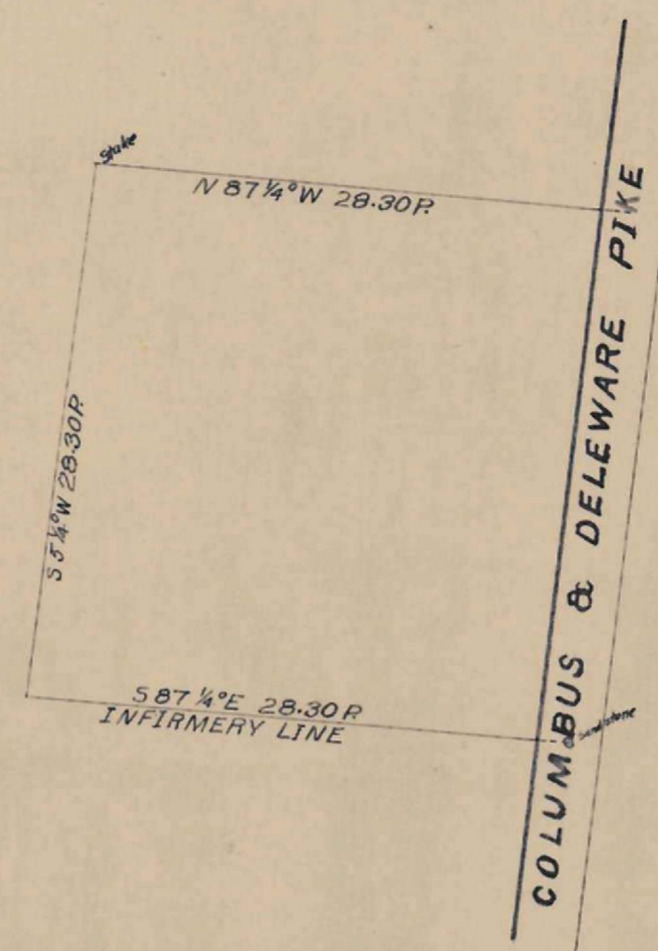
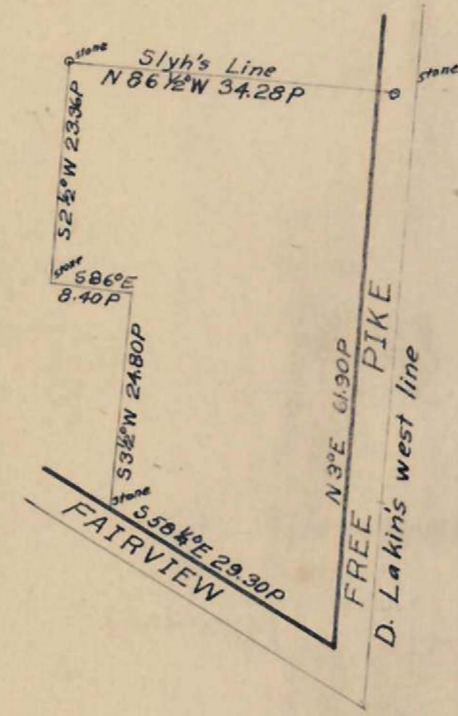
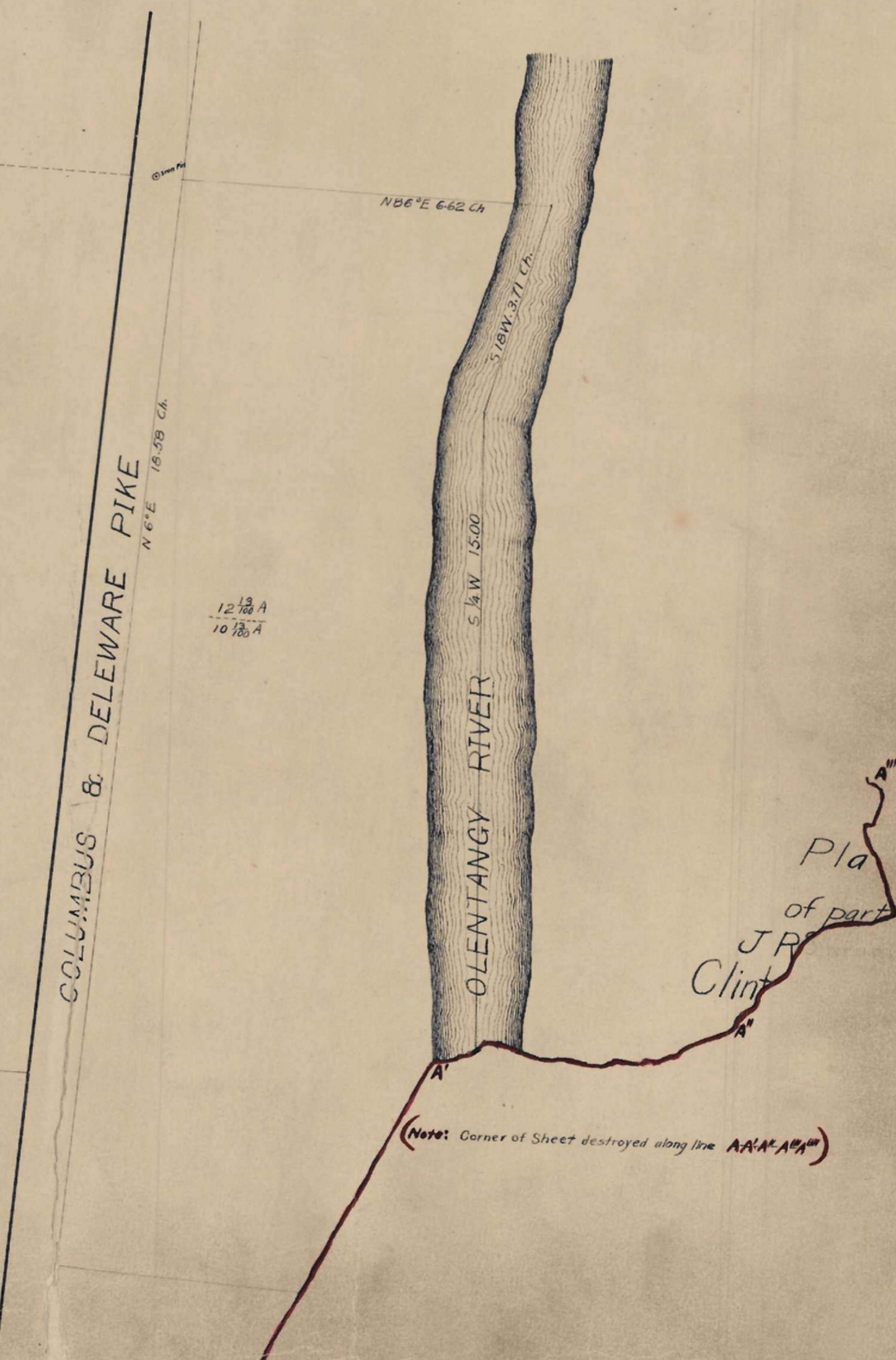
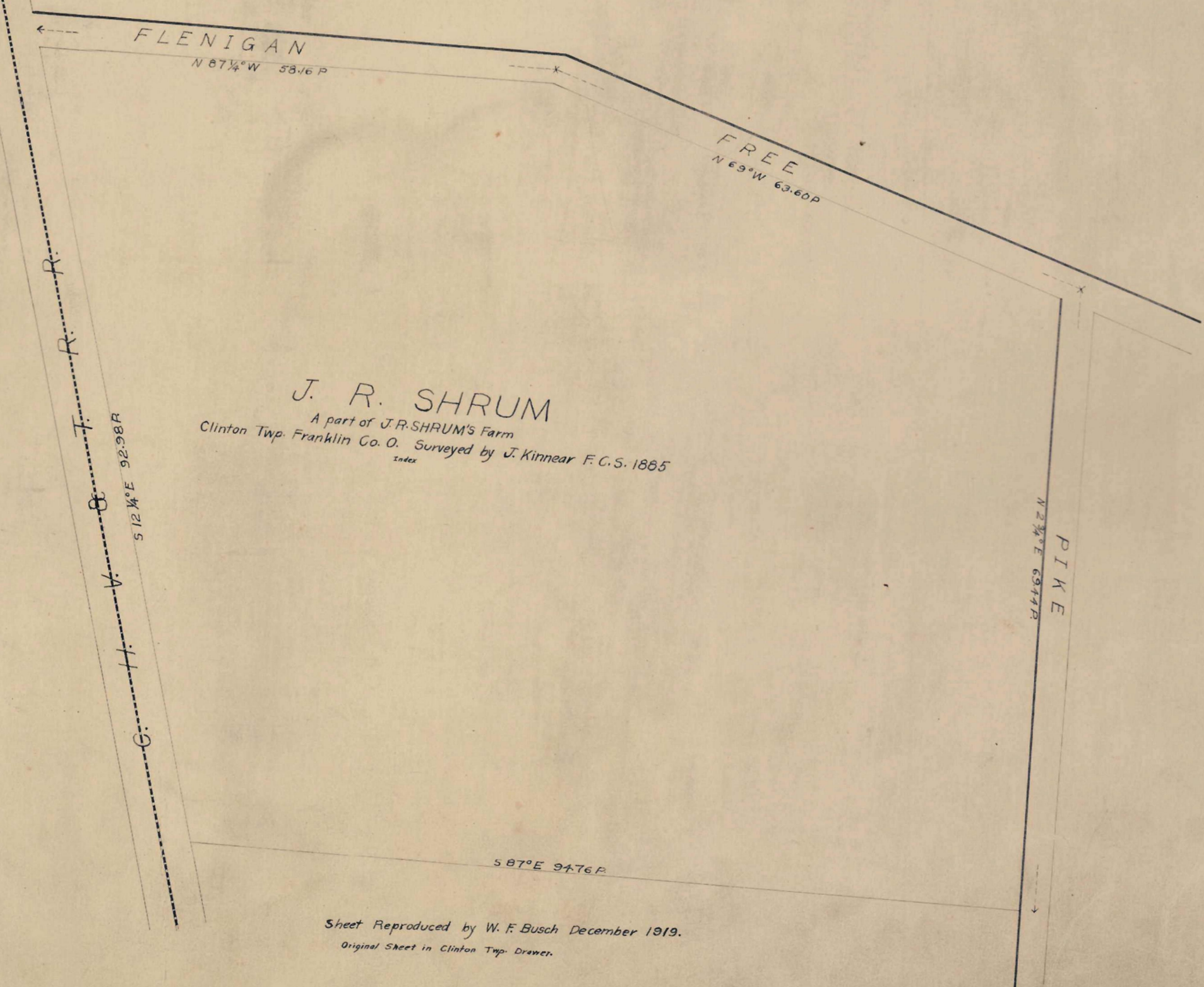


O'HARRA & SIMS TO E. SELLS
BEING A PART OF TWP. NO. 1, QUARTER NO. 3, RANGE 18 US. LAND CLINTON TWP, F. CO. O.
SURVEYED BY J. KINNEAR F.C.S. 1855.
Scale 20 P. 1" = 40 P.

J. R. SHRUM TO J. COURTRIGHT
BEING A PART OF THE 3rd QUARTER OF CLINTON TWP, FRANKLIN Co. O.
SURVEYED BY J. KINNEAR F.C.S. 1855.



SHATTUCK FARM CLINTON Tp F. Co. O.
Surveyed by J. Kinnear 1875



Sheet Reproduced by W. F. Busch December 1919.
Original Sheet in Clinton Twp. Drawers.