

RESOLUTION NO. 1217-93

December 21, 1993

REPLACEMENT OF THE KING AVENUE BRIDGE
OVER THE OLENTANGY RIVER, CITY OF COLUMBUS,
CLINTON TOWNSHIP, (CLI 68-1.85), FRANKLIN
COUNTY, OHIO, DECLARED NECESSARY
(FRANKLIN COUNTY ENGINEER)

WHEREAS, it is necessary to replace the existing functionally
obsolete bridge with a new structure over the Olentangy River; and

WHEREAS, the Franklin County Engineer has requested that
proceedings be initiated for the replacement of the King Avenue bridge;
now, therefore, upon motion of Commissioner Teater
seconded by Commissioner Shoemaker

BE IT RESOLVED, BY THE BOARD OF COUNTY COMMISSIONERS OF
FRANKLIN COUNTY, OHIO:

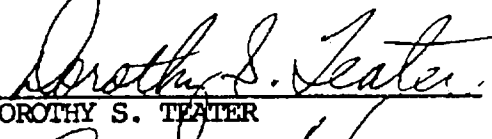
Section 1) That the Franklin County Engineer is hereby
directed to prepare a report, consisting of full and accurate
plans, specifications, estimates of cost and all other
necessary documents for the above mentioned improvement as
prescribed by law, and he shall file said report at a joint
meeting of the County Commissioners, County Auditor and the
County Engineer for their approval or recommendations, said
report is to be ready for filing on or before the advertised
date.

Section 2) That the Franklin County Engineer, by his request
is hereby directed to investigate and recommend a consulting
engineer to be hired to assist him in the preparation of said
report.


Voting Aye thereon:



JACK FOULK



DOROTHY S. TEATER



ARLENE SHOEMAKER
BOARD OF COUNTY COMMISSIONERS
FRANKLIN COUNTY, OHIO

Voting Nay thereon:

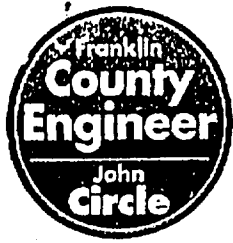
JACK FOULK

DOROTHY S. TEATER

ARLENE SHOEMAKER
BOARD OF COUNTY COMMISSIONERS
FRANKLIN COUNTY, OHIO

JC:JUG:cmc

cc: Journal



John Circle, P.E., P.S.
Franklin County Engineer

Dean C. Ringle, P.E., P.S.
*Chief Deputy Engineer,
Engineering*

Gary Palatas, P.E.
*Chief Deputy Engineer,
Operations*

Donald Backstrom
Fiscal Officer

John Bryner, P.E.
Highway Engineer

Diana Clonch
*Highway Maintenance
Superintendent*

Ralph Crabb, P.E.
Construction Engineer

Stan Eriksen, P.E.
Limousine Engineer

Gretchen Green
*Human Resources
Administrator*

Timothy M. Luicks
Real Estate Administrator

Michael Meeks, P.E.
Traffic Engineer

Jean Kelley
Administrative Assistant

Thomas Kelley
Equipment Superintendent

David L. Pearson, P.S.
Survey and GIS Administrator

David Philips, P.E.
Planning & Programming

Mark Sherman, P.E.
Bridge Engineer

James Fraganato
Traffic Superintendent

Brigham J. Mitten, P.S.
Engineers Map Room Supervisor

Edward Williams
Bridge Maintenance

September 9, 1997

Honorable Board of County Commissioners
Franklin County Administration Building
373 South High Street
Columbus, Ohio 43215

Honorable Board:

Pursuant to your resolution of December 21, 1993, I have prepared plans, profiles, specifications, estimates of cost and all other information required by the County Engineer, for the replacement of the King Avenue bridge over the Olentangy River, the City of Columbus, Franklin County, Ohio.

It is my recommendation that the King Avenue bridge project be approved as shown on the submitted plans.

Respectfully submitted,

John Circle, P.E., P.S.
Franklin County Engineer

JC:TML:cmc

DCR

RESOLUTION NO. 877-97

September 16, 1997

RIGHT OF WAY AND CONSTRUCTION PLANS
APPROVED FOR THE REPLACEMENT OF THE
KING AVENUE BRIDGE OVER THE OLENTANGY
RIVER, THE CITY OF COLUMBUS, FRANKLIN
COUNTY, OHIO
(FRANKLIN COUNTY ENGINEER)

WHEREAS, on the 21st of December, 1993, the Board of County Commissioners by resolution, directed the County Engineer to prepare plans, specifications, estimates of cost and all other necessary documents relative to the construction of the King Avenue bridge over the Olentangy River, and the approaches thereto, and he shall file said report at a joint meeting of the County Commissioners, County Auditor and the County Engineer for their approval or recommendations, said report is to be submitted on or before September 16, 1997; and

WHEREAS, on the 16th of September, 1997, the Franklin County Engineer submitted his report to a joint meeting of the County Commissioners, County Auditor and County Engineer; and

WHEREAS, the plans, specifications and other documents relative to the construction of the King Avenue bridge over the Olentangy River were approved at said meeting; now, therefore upon motion of Commissioner Stokes, seconded by Commissioner Teater,

BE IT RESOLVED, BY THE BOARD OF COUNTY COMMISSIONERS OF FRANKLIN COUNTY, OHIO:

Section 1) That it is the opinion of said Board that the public convenience and welfare, require that said improvement be made, and that a copy of the plans and specifications shall be kept on file in the office of the County Auditor and a copy of the plans, specifications and estimates relating to the construction of said bridge are to be kept in the office of the County Engineer and kept for inspection for parties interested.

Section 2) That the date of sale for this project is November 20, 1997.

RESOLUTION, Cont'd.
RIGHT OF WAY AND CONSTRUCTION PLANS
APPROVED FOR THE REPLACEMENT OF THE
KING AVENUE BRIDGE OVER THE OLENTANGY
RIVER, THE CITY OF COLUMBUS, FRANKLIN
COUNTY, OHIO
(FRANKLIN COUNTY ENGINEER)

Voting Aye thereon:

Dorothy S. Teater
DOROTHY S. TEATER

ARLENE SHOEMAKER

Dewey R. Stokes
DEWEY R. STOKES
BOARD OF COUNTY COMMISSIONERS
FRANKLIN COUNTY, OHIO

JOSEPH W. TESTA
FRANKLIN COUNTY AUDITOR

JOHN CIRCLE, P.E., P.S.
FRANKLIN COUNTY ENGINEER

Voting Nay thereon:

DOROTHY S. TEATER

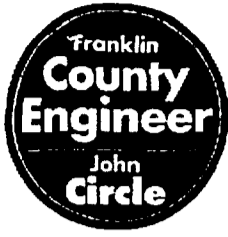
ARLENE SHOEMAKER

DEWEY R. STOKES
BOARD OF COUNTY COMMISSIONERS
FRANKLIN COUNTY, OHIO

JOSEPH W. TESTA
FRANKLIN COUNTY AUDITOR

JOHN CIRCLE, P.E., P.S.
FRANKLIN COUNTY ENGINEER

c: Journal
Engineer - King Ave. Bridge, #4580



October 14, 1997

John Circle, P.E., P.S.
Franklin County Engineer

Dean C. Ringle, P.E., P.S.
*Chief Deputy Engineer,
Engineering*

Gary Palatas, P.E.
*Chief Deputy Engineer,
Operations*

Donald Backstrom
Fiscal Officer

John Bryner, P.E.
Highway Engineer

Diana Clonch
*Highway Maintenance
Superintendent*

Ralph Crabb, P.E.
Construction Engineer

Stan Eriksen, P.E.
Liaison Engineer

Gretchen Green
*Human Resources
Administrator*

Timothy M. Lucks
Real Estate Administrator

Michael Meeks, P.E.
Traffic Engineer

Jean Kelley
Administrative Assistant

Thomas Kelley
Equipment Superintendent

David L. Pearson, P.S.
Survey and GIS Administrator

David Philips, P.E.
Planning & Programming

Mark Sherman, P.E.
Bridge Engineer

James Fraganato
Traffic Superintendent

Brigham J. Mitten, P.S.
Engineers Map Room Supervisor

Edward Williams
Bridge Maintenance

Honorable Board of County Commissioners
Franklin County Administration Building
373 South High Street
Columbus, Ohio 43215

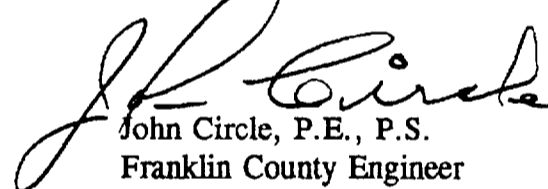
Honorable Board:

Pursuant to your resolution of December 21, 1993, directing the County Engineer to investigate and recommend one or more recognized appraisers as conditions warrant in the matter of the purchase of additional right of way for the improvement of the King Avenue bridge over the Olentangy River, I hereby submit the following report.

After considerable investigation, I requested and received the following quotations from Arnold and Associates, Inc. to appraise two (2) parcels for a total fee of Thirty Five Hundred dollars and zero cents, (\$3,500.00).

It is the recommendation of this office that Arnold and Associates, Inc. should be employed to appraise the above mentioned parcels of land on King Avenue.

Respectfully submitted,


John Circle, P.E., P.S.
Franklin County Engineer

JC:TML:cmc

DCR

October 21, 1997

ARNOLD AND ASSOCIATES, INC., EMPLOYED
AS THE APPRAISERS IN THE MATTER OF
PURCHASING ADDITIONAL RIGHT OF WAY
FOR THE IMPROVEMENT OF THE KING AVENUE
BRIDGE OVER THE OLENTANGY RIVER,
FRANKLIN COUNTY, OHIO
(FRANKLIN COUNTY ENGINEER - \$3,500.00)

WHEREAS, the Franklin County Engineer after considerable investigation, recommends the employing of Arnold and Associates, Inc. to complete the appraisal work on the King Avenue bridge over the Olentangy River; now, therefore, upon motion of Commissioner Stokes, seconded by Commissioner Shoemaker,

BE IT RESOLVED, BY THE BOARD OF COUNTY COMMISSIONERS OF FRANKLIN COUNTY, OHIO:

Section 1) That Arnold and Associates, Inc. are hereby employed as the appraiser in the matter of purchasing additional right of way for the King Avenue bridge over the Olentangy River, on the following table of fees for said appraisal work:

Arnold and Associates, Inc. Two (2) Parcels Total Fee \$3,500.00

Section 2) That purchase order number 7C97066 has been pre-certified by the County Auditor in the amount of \$3,500.00 for Arnold and Associates, Inc., and a copy is attached.

Voting Aye thereon:

Dorothy S. Teater
DOROTHY S. TEATER

Arlene Shoemaker
ARLENE SHOEMAKER

Dewey R. Stokes
DEWEY R. STOKES
BOARD OF COUNTY COMMISSIONERS
FRANKLIN COUNTY, OHIO

Voting Nay thereon:

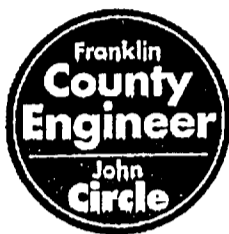
DOROTHY S. TEATER

ARLENE SHOEMAKER

DEWEY R. STOKES
BOARD OF COUNTY COMMISSIONERS
FRANKLIN COUNTY, OHIO

JC:TML:cmc

c: Journal
Engineer-King Ave. #4580
Road Record



April 7, 1998

John Circle, P.E., P.S.
Franklin County Engineer

Dean C. Ringle, P.E., P.S.
Chief Deputy Engineer,
Engineering

Gary Palatas, P.E.
Chief Deputy Engineer,
Operations

Donald Backstrom
Fiscal Officer

John Bryner, P.E.
Highway Engineer

Dianna Clonch
Highway Maintenance
Superintendent

Ralph Crahb, P.E.
Construction Engineer

Stan Eriksen, P.E.
Liason Engineer

Cretchen Green
Human Resources
Administrator

Timothy M. Lucks
Real Estate Administrator

Michael Meeks, P.E.
Traffic Engineer

Jean Kelley
Administrative Assistant

Thomas Kelley
Equipment Superintendent

David L. Pearson, P.S.
Survey and GIS Administrator

David Phillips, P.E.
Planning & Programming

Mark Sherman, P.E.
Bridge Engineer

James Fraganato
Traffic Superintendent

Brigham J. Mitten, P.S.
Engineers Map Room Supervisor

Edward Williams
Bridge Maintenance

Honorable Board of County Commissioners
Franklin County Administration Building
373 South High Street
Columbus, Ohio 43215

Honorable Board:

After negotiating with a portion of the owners abutting the King Avenue Bridge over the Olentangy River, the City of Columbus, Franklin County, Ohio, for the purchase of additional land needed for road purposes, I hereby submit for your consideration the following recommendation for the partial payment of damages to be awarded to the owners of land sought to be appropriated.

AUDITOR'S PAR. NO.	ENGR'S PAR. NO.	NAME	AMOUNT
	1-WD,T,T-1	The Ohio State University, in care of Parker Brother's Quality Stone Masonry	\$26,800.00

I am of the opinion that the sums above recommended to be paid to this owner, the Ohio State University, in care of Parker Brother's Quality Stone Masonry, to be just and equitable for the damages sustained by reason of the improvement of the King Avenue Bridge over the Olentangy River, the City of Columbus, Franklin County, Ohio.

Respectfully submitted,

John Circle, P.E., P.S.
Franklin County Engineer

JC:TML:cmc

DCR

RESOLUTION NO. 393-98

April 14, 1998

REPORT (FIRST) OF THE COUNTY ENGINEER
AND ESTABLISHING SUMS FOR COMPENSATION
AND DAMAGES FOR A PORTION OF THE OWNERS
IN THE MATTER OF THE IMPROVEMENT OF THE
KING AVENUE BRIDGE OVER THE OLENTANGY RIVER,
THE CITY OF COLUMBUS, FRANKLIN COUNTY, OHIO
(FRANKLIN COUNTY ENGINEER - \$26,800.00)

WHEREAS, on the 16th of September, 1997, the Board of County Commissioners did by resolution duly adopted find in favor of improving the King Avenue bridge over the Olentangy River, the City of Columbus, Franklin County, Ohio; and

WHEREAS, the Franklin County Engineer has negotiated with a portion of the property owners abutting the King Avenue bridge over the Olentangy River, the City of Columbus, Franklin County, Ohio; and

WHEREAS, the Franklin County Engineer has advised this Board by letter dated April 7, 1998, that it is his recommendation that the following partial amount of damages to be awarded to the owner of land sought to be appropriated; and

WHEREAS, the attached purchase order encumbrance has been pre-certified as to the availability of funds by the County Auditor for payment; now, therefore, upon motion of Commissioner Stokes, seconded by Commissioner Teater

AUDITOR'S PAR. NO.	ENGR'S PAR. NO.	NAME	AMOUNT
	1-WD,T,T-1	The Ohio State University, in care of Parker Brother's Quality Stone Masonry	\$26,800.00

PICKED UP

BE IT RESOLVED, BY THE BOARD OF COUNTY COMMISSIONERS OF FRANKLIN COUNTY, OHIO:

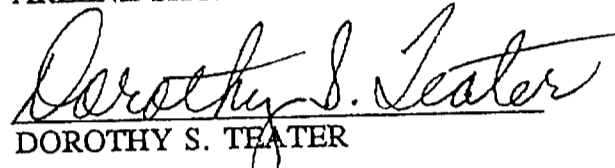
Section 1) That after due consideration the partial amount of damages as recommended by the Franklin County Engineer for the improvement of the King Avenue bridge over the Olentangy River, the City of Columbus, Franklin County, Ohio, are just and equitable for the damages sustained to the Ohio State University, in care of Parker Brother's Quality Stone Masonry, by reason of said road improvement, are hereby approved.

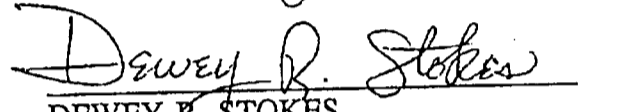
Section 2) That the attached purchase order, 80954321 for Parker Brother's Quality Stone Masonry, is hereby approved and a copy is attached.

RESOLUTION, Cont'd.
REPORT (FIRST) OF THE COUNTY ENGINEER
AND ESTABLISHING SUMS FOR COMPENSATION
AND DAMAGES FOR A PORTION OF THE OWNERS
IN THE MATTER OF THE IMPROVEMENT OF THE
KING AVENUE BRIDGE OVER THE OLENTANGY RIVER,
THE CITY OF COLUMBUS, FRANKLIN COUNTY, OHIO
(FRANKLIN COUNTY ENGINEER - \$26,800.00)

Voting Aye thereon:


ARLENE SHOEMAKER


DOROTHY S. TEATER


DEWEY R. STOKES
BOARD OF COUNTY COMMISSIONERS
FRANKLIN COUNTY, OHIO

Voting Nay thereon:

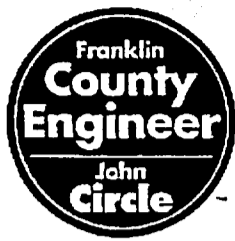
ARLENE SHOEMAKER

DOROTHY S. TEATER

DEWEY R. STOKES
BOARD OF COUNTY COMMISSIONERS
FRANKLIN COUNTY, OHIO

JC:TML:cmc

c: Journal
Engineer
Road Record



October 13, 1998

John Circle, P.E., P.S.
Franklin County Engineer

Dean C. Ringle, P.E., P.S.
Chief Deputy Engineer, Engineering

Gary Pulatas, P.E.
Chief Deputy Engineer, Operations

Donald Backstrom
Fiscal Officer

John Bryner, P.E.
Highway Engineer

Diana Clonch
Highway Maintenance Superintendent

Ralph Crabb, P.E.
Construction Engineer

Stan Eriksen, P.E.
Liaison Engineer

Gretchen Green
Human Resources Administrator

Timothy M. Lucks
Real Estate Administrator

Michael Meeks, P.E.
Traffic Engineer

Jean Kelley
Administrative Assistant

Thomas Kelley
Equipment Superintendent

David L. Pearson, P.S.
Survey and GIS Administrator

David Philips, P.E.
Planning & Programming

Mark Sherman, P.E.
Bridge Engineer

James Fraganato
Traffic Superintendent

Brigham J. Mitten, P.S.
Engineers Map Room Supervisor

Edward Williams
Bridge Maintenance

Honorable Board of County Commissioners
Franklin County Administration Building
373 South High Street
Columbus, Ohio 43215

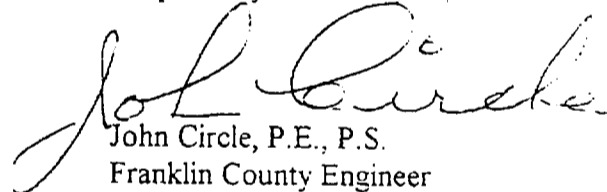
Honorable Board:

After negotiating with a portion of the owners abutting the King Avenue bridge over the Olentangy River, the City of Columbus, Franklin County, Ohio, for the purchase of additional land needed for road purposes, I hereby submit for your consideration the following recommendation as to the amount of compensation and damages to be awarded to the owners of land sought to be appropriated.

AUDITOR'S <u>PAR. NO.</u>	ENGR'S <u>PAR. NO.</u>	<u>NAME</u>	<u>AMOUNT</u>
010-52338 & 010-67141	2-WD, T, T-1, U, U-1	Battelle Memorial Institute	\$ 38,265.00

I am of the opinion that the sums above recommended to be paid to this portion of the owners to be just and equitable for the land taken and damages sustained by reason of the improvement of the King Avenue bridge over the Olentangy River, the City of Columbus, Franklin County, Ohio.

Respectfully submitted,


John Circle, P.E., P.S.
Franklin County Engineer

JC:TML:cmc

DCR

RESOLUTION NO. 1022-98

October 20, 1998

REPORT (SECOND) OF THE COUNTY ENGINEER
AND ESTABLISHING SUMS FOR COMPENSATION
AND DAMAGES FOR A PORTION OF THE OWNERS
IN THE MATTER OF THE IMPROVEMENT OF THE
KING AVENUE BRIDGE OVER THE OLENTANGY RIVER,
THE CITY OF COLUMBUS, FRANKLIN COUNTY, OHIO
(FRANKLIN COUNTY ENGINEER - \$38,265.00)

WHEREAS, on the 16th of September, 1997, the Board of County Commissioners did by resolution duly adopted find in favor of improving the King Avenue bridge over the Olentangy River, the City of Columbus, Franklin County, Ohio; and

WHEREAS, the Franklin County Engineer has negotiated with a portion of the property owners abutting the King Avenue bridge over the Olentangy River, the City of Columbus, Franklin County, Ohio; and

WHEREAS, the Franklin County Engineer has advised this Board by letter dated October 13, 1998, that it is his recommendation that the following amounts of compensation and damages to be awarded to the owners of land sought to be appropriated; and

WHEREAS, the attached purchase order encumbrance has been pre-certified as to the availability of funds by the County Auditor for payment; now, therefore, upon motion of Commissioner **Teater**, seconded by Commissioner **Stokes**

AUDITOR'S PAR. NO.	ENGR'S PAR. NO.	NAME	AMOUNT
010-52338 & 010-67141	2-WD,T, T-1,U,U-1	Battelle Memorial Institute	\$ 38,265.00

✓ Rec'd
12-28-98

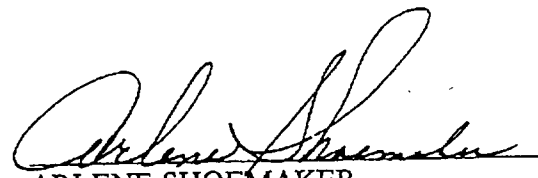
BE IT RESOLVED, BY THE BOARD OF COUNTY COMMISSIONERS
OF FRANKLIN COUNTY, OHIO:

Section 1) That after due consideration the amounts of compensation and damages as recommended by the Franklin County Engineer for the improvement of the King Avenue bridge over the Olentangy River, the City of Columbus, Franklin County, Ohio, are just and equitable for the lands taken and damages sustained by reason of said road improvement are hereby approved.

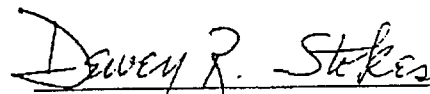
Section 2) That the attached purchase order, 80960331 for Battelle Memorial Institute, is hereby approved and a copy is attached.

RESOLUTION, Cont'd.
REPORT (SECOND) OF THE COUNTY ENGINEER
AND ESTABLISHING SUMS FOR COMPENSATION
AND DAMAGES FOR A PORTION OF THE OWNERS
IN THE MATTER OF THE IMPROVEMENT OF THE
KING AVENUE BRIDGE OVER THE OLENTANGY RIVER,
THE CITY OF COLUMBUS, FRANKLIN COUNTY, OHIO
(FRANKLIN COUNTY ENGINEER - \$38,265.00)

Voting Aye thereon:


ARLENE SHOEMAKER


DOROTHY S. TEATER


DEWEY R. STOKES
BOARD OF COUNTY COMMISSIONERS
FRANKLIN COUNTY, OHIO

Voting Nay thereon:

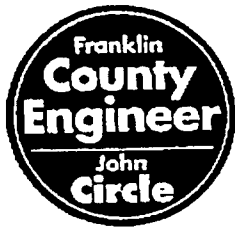
ARLENE SHOEMAKER

DOROTHY S. TEATER

DEWEY R. STOKES
BOARD OF COUNTY COMMISSIONERS
FRANKLIN COUNTY, OHIO

JC:TML:cmc

c: Journal
Engineer - King Ave. Bridge, #4580
Road Record



July 16, 1999

John Circle, P.E., P.S.
Franklin County Engineer

Dean C. Ringle, P.E., P.S.
Chief Deputy Engineer,
Engineering

Gary Palatas, P.E.
Chief Deputy Engineer,
Operations

Donald Backstrom
Fiscal Officer

John Bryner, P.E.
Highway Engineer

Diana Clonch
Highway Maintenance
Superintendent

Ralph Crabb, P.E.
Construction Engineer

Gretchen Green
Human Resources
Administrator

Timothy M. Lucks
Real Estate Administrator

Michael Meeks, P.E.
Traffic Engineer

Jean Kelley
Administrative Assistant

Thomas Kelley
Equipment Superintendent

David L. Pearson, P.S.
Survey and GIS Administrator

David Philips, P.E.
Planning & Programming

Mark Sherman, P.E.
Bridge Engineer

James Fraganato
Traffic Superintendent

Brigham J. Mitten, P.S.
Engineers Map Room Supervisor

Edward Williams
Bridge Maintenance
Superintendent

Honorable Board of County Commissioners
Franklin County Administration Building
373 South High Street
Columbus, Ohio 43215

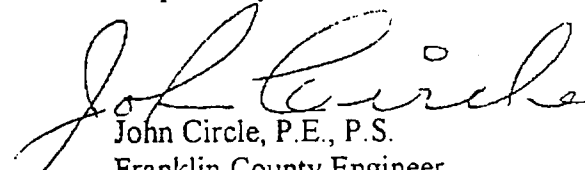
Honorable Board:

After negotiating with a portion of the owners abutting the King Avenue Bridge over the Olentangy River, the City of Columbus, Franklin County, Ohio, for the purchase of additional land needed for road purposes, I hereby submit for your consideration the following recommendation as to the amount of compensation and damages to be awarded to the owners of land sought to be appropriated.

<u>AUDITOR'S</u> <u>PAR. NO.</u>	<u>ENGR'S</u> <u>PAR. NO.</u>	<u>NAME</u>	<u>AMOUNT</u>
	1-HE, T, T-1	The Ohio State University	\$ 47,940.00

I am of the opinion that the sums above recommended to be paid to this portion of the owners to be just and equitable for the land taken and damages sustained by reason of the improvement of the King Avenue Bridge over the Olentangy River, the City of Columbus, Franklin County, Ohio.

Respectfully submitted,


John Circle, P.E., P.S.
Franklin County Engineer

JC:TML:cmc

285

RESOLUTION NO. 730-99

July 27, 1999

REPORT (THIRD) OF THE COUNTY ENGINEER
AND ESTABLISHING SUMS FOR COMPENSATION
AND DAMAGES FOR A PORTION OF THE OWNERS
IN THE MATTER OF THE IMPROVEMENT OF
THE KING AVENUE BRIDGE OVER THE
OLENTANGY RIVER, THE CITY OF COLUMBUS,
FRANKLIN COUNTY, OHIO
(FRANKLIN COUNTY ENGINEER - \$47,940.00)

WHEREAS, on the 16th of September, 1997, the Board of County Commissioners did by resolution duly adopted find in favor of improving the King Avenue bridge over the Olentangy River, the City of Columbus, Franklin County, Ohio; and

WHEREAS, the Franklin County Engineer has negotiated with a portion of the property owners abutting the King Avenue bridge over the Olentangy River, the City of Columbus, Franklin County, Ohio; and

WHEREAS, the Franklin County Engineer has advised this Board by letter dated July 16, 1999, that it is his recommendation that the following amounts of compensation and damages to be awarded to the owners of land sought to be appropriated; and

WHEREAS, the attached purchase order encumbrance has been pre-certified as to the availability of funds by the County Auditor for payment; now, therefore, upon motion of Commissioner Shoemaker, seconded by Commissioner Teater

AUDITOR'S PAR. NO.	ENGR'S PAR. NO.	NAME	AMOUNT
	1-HE,T,T-1	The Ohio State University	\$ 47,940.00

*Rec'd
8-12-99*

BE IT RESOLVED, BY THE BOARD OF COUNTY COMMISSIONERS OF FRANKLIN COUNTY, OHIO:

Section 1) That after due consideration the amounts of compensation and damages as recommended by the Franklin County Engineer for the improvement of the King Avenue bridge over the Olentangy River, the City of Columbus, Franklin County, Ohio, are just and equitable for the lands taken and damages sustained by reason of said road improvement are hereby approved.

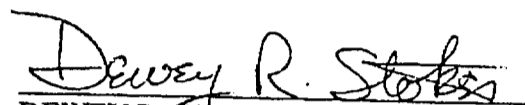
Section 2) That the attached purchase order has been pre-certified by the Franklin County Auditor, and a copy is attached.

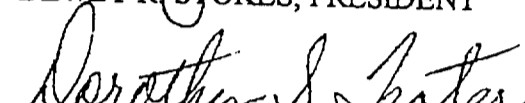
RESOLUTION, Cont'd.
REPORT (THIRD) OF THE COUNTY ENGINEER
AND ESTABLISHING SUMS FOR COMPENSATION
AND DAMAGES FOR A PORTION OF THE OWNERS
IN THE MATTER OF THE IMPROVEMENT OF
THE KING AVENUE BRIDGE OVER THE
OLENTANGY RIVER, THE CITY OF COLUMBUS,
FRANKLIN COUNTY, OHIO
(FRANKLIN COUNTY ENGINEER - \$47,940.00)

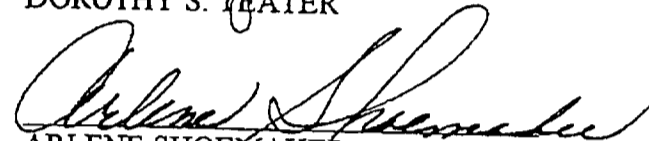
Page 2

286

Voting Aye thereon:


DEWEY R. STOKES, PRESIDENT


DOROTHY S. TEATER


ARLENE SHOEMAKER
BOARD OF COUNTY COMMISSIONERS
FRANKLIN COUNTY, OHIO

Voting Nay thereon:

DEWEY R. STOKES, PRESIDENT

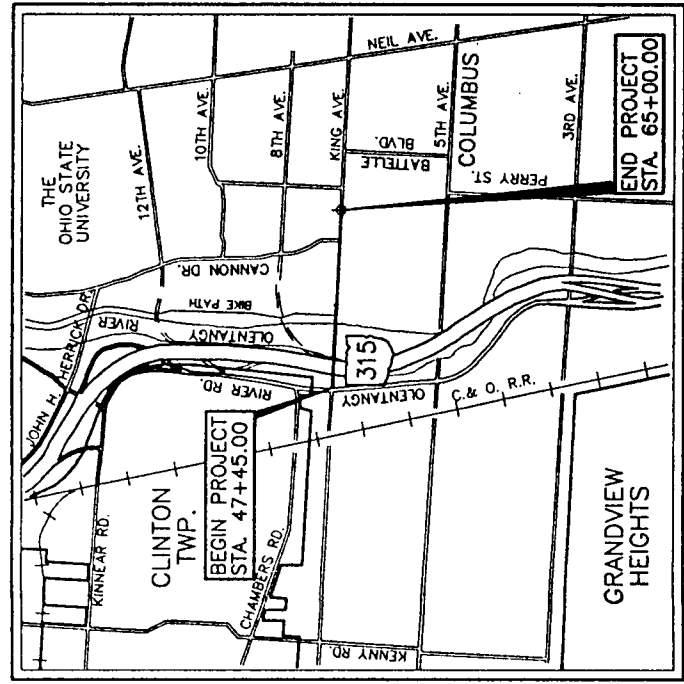
DOROTHY S. TEATER

ARLENE SHOEMAKER
BOARD OF COUNTY COMMISSIONERS
FRANKLIN COUNTY, OHIO

JC:TML:cmc

c: Journal
Engineer - King Ave. Bridge, #4580
Road Record

FRANKLIN COUNTY OFFICE OF COUNTY ENGINEER FRA-C.R. NO. 68, KING AVE. CITY OF COLUMBUS



LEGEND

PROJECT LOCATION: PLAN, PROFILE, HORIZ., VERT.

INTERSTATE: [Symbol]

STATE: [Symbol]

COUNTY & TOWNSHIP: C.R. 69

STREETS: [Symbol]

SCALES IN FEET

0 20
0 20
0 20
0 20
0 20

DESIGN DESIGNATION

CURRENT ADT (1995) 18,200

DESIGN YEAR ADT (2018) 20,400

DHV 2040

D 0.60

T 2%

DESIGN SPEED 40 MPH

LEGAL SPEED LIMIT 35 MPH

FUNCTIONAL CLASSIFICATION MINOR ARTERIAL

DESIGN EXCEPTIONS

1. MAINTAIN 15'0" EXISTING VERTICAL CLEARANCE TO BOTTOM OF S.R. 315 VIADUCT

PLANS PREPARED BY:
ERIKSSON ENGINEERING, LTD.
1523 Chesapeake Ave.
Columbus, Ohio 43212
Tel. (614)488-0731

UNDERGROUND UTILITIES

TWO WORKING DAYS
BEFORE YOU DIG
CALL 1-800-362-2764 (TOLL FREE)
OHIO UTILITIES PROTECTION SERVICE
NON-MEMBERS
MUST BE CALLED DIRECTLY

* CITY OF COLUMBUS

STANDARD DRAWINGS

BP-2.1	10-28-94	* AA-S121	TC-17.10	1-20-84	HL-10.11	5-01-87	MT-95.32	8-25-89
BP-2.2	10-28-94	* AA-S123	TC-21.20	9-01-92	HL-10.12	5-01-87	MT-99.10	11-14-86
BP-2.3	2-21-92	* AA-S125	TC-35.10	8-29-84	HL-10.13	5-01-87	MT-101.60	7-01-92
BP-5.1	10-28-94	* AA-S126	TC-41.20	6-21-94	HL-20.11	5-01-87	MT-105.10	7-01-92
BP-7.1	10-30-92	RM-1.1M	TC-42.20	3-26-79	HL-20.14	5-01-87	MT-105.11	7-01-92
F-1	11-10-83	*01 S 0014	TC-52.10	4-03-79	HL-30.11	5-01-87	MT-105.11	7-01-92
GR-2.1	5-06-91	*01 S 0020	TC-52.20	7/92	HL-30.22	5-01-87	MT-105.11	7-01-92
GR-4.2	5-06-91	*01 S 0023	TC-71.10	9-10-91	HL-30.31	5-01-87	MT-105.11	7-01-92
CB-2-2B	5-01-79	*01 S 0053	TC-81.10	1-20-84	HL-30.32	5-01-87	MT-105.11	7-01-92
CB-2-3	5-01-79	*01 S 0059	TC-82.10	8-29-84	HL-40.10	5-01-87	MT-105.11	7-01-92
HW-3	6-01-65	*01 S 0060	TC-83.10	3-18-92	HL-50.21	5-01-87	MT-105.11	7-01-92
HW-4B	4-01-80	*01 S 0067	TC-83.20	3/91	HL-60.11	5-01-87	MT-105.11	7-01-92
MH-3	12-18-84	*01 S 0084	TC-84.20	1-20-84	HL-60.31	5-01-87	MT-105.11	7-01-92
MH-5	6-12-75	*01 S 00104	TC-85.10	1-20-84	HL-60.31	5-01-87	MT-105.11	7-01-92
MC-4	7-26-76	*01 S 00117	TC-85.20	1-20-84	HL-60.31	5-01-87	MT-105.11	7-01-92
MC-11	8-01-78	*MC G 6	TC-85.20	1-20-84	HL-60.31	5-01-87	MT-105.11	7-01-92
LA-1	6-01-79		TC-85.20	1-20-84	HL-60.31	5-01-87	MT-105.11	7-01-92

LINE DATA

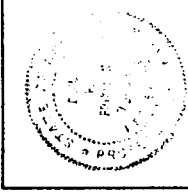
BEGIN PROJECT	STA. 47+45.00
END PROJECT	STA. 65+00.00
PROJECT LENGTH	1755 L.F. or 0.33 MI.
BEGIN WORK	STA. 47+40.00
END WORK	STA. 65+50.00
WORK LENGTH	1810 L.F. or 0.34 MI.

BENCHMARKS (N.G.V.D. 1929)

- TBM#1 - CENTER OF HEADWALL AT ANGLE PT., CHISLED "X" IN HEADWALL STATION 49+78.4, 105.5' RT., ELEV. = 717.04
- BM#2 - PONY SPIKE IN N. SIDE POWER POLE STATION 50+03.4, 17.2' RT.; ELEV. = 735.38
- BM#4 - CHISLED "SQUARE" SE CORNER OF STEAM PIT. STATION 54+96.8, 43.1' LT.; ELEV. = 733.19
- TBM#2 - CHISLED "X" IN CONC. AT BACK OF SIDEWALK STA. 58+00, 25.5' LT., ELEV. = 730.05
- BM#604 - I.P. & CAP STAMPED ERIKSSON ENG. LTD. STATION 61+80.52, 27.01' RT., ELEV. 726.35
- TBM#3 - CHISLED "X" IN CONC. SIDEWALK STA. 63+55.5, 22.1' RT., ELEV. = 726.94
- BM#605 - I.P. & CAP STAMPED ERIKSSON ENG. LTD. STATION 64+99.16, 34.71' RT., ELEV. 730.12

SUPPLEMENTAL SPECIFICATIONS

*MIS-4	11/95
*MIS-7	5/91
*MIS-11	11/94
*MIS-14	6/95
*MIS-15	12/96
*MIS-16	7/96
*MIS-17	7/96
*MIS-32	1/97
*MIS-41	5/91
*MIS-44	6/91
*MIS-92	12/92
*MIS-95	4/92
*MIS-111	4/91
*MIS-121	5/92



PROJECT DESCRIPTION

REPLACE AND WIDEN BRIDGE OVER THE OLENTANGY RIVER AND IMPROVE APPROACHES.

1997 SPECIFICATIONS

THE STANDARD SPECIFICATIONS OF THE STATE OF OHIO, DEPARTMENT OF TRANSPORTATION, INCLUDING CHANGES AND SUPPLEMENTAL SPECIFICATIONS LISTED IN THE PROPOSAL SHALL GOVERN THIS IMPROVEMENT.

I HEREBY APPROVE THESE PLANS AND DECLARE THAT THE MAKING OF THIS IMPROVEMENT WILL REQUIRE THE CLOSING TO TRAFFIC OF THE HIGHWAY AND THAT DETOURS WILL BE PROVIDED AS INDICATED ON SHEET 5D.

FRANKLIN COUNTY

- APPROVED DATE 2/1/97 *Alan C. Pugh* FRANKLIN COUNTY CHIEF DEPUTY ENGINEER
- APPROVED DATE 2/1/97 *John J. Cairns* FRANKLIN COUNTY ENGINEER
- APPROVED DATE 2/2/97 *[Signature]* FRANKLIN COUNTY AUDITOR
- APPROVED DATE 2/1/97 *Verity S. Senter* FRANKLIN COUNTY COMMISSIONERS
- APPROVED DATE 2/1/97 *Dwight R. Stoken* FRANKLIN COUNTY COMMISSIONERS
- APPROVED DATE 2/1/97 _____ FRANKLIN COUNTY COMMISSIONERS

CITY OF COLUMBUS

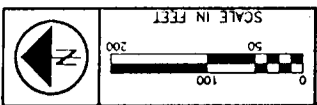
- APPROVED DATE 1/24/97 *Thomas M. Smith* DIRECTOR OF PUBLIC SERVICE
- APPROVED DATE 2/2/97 *Robert C. Smith* CITY ENGINEER
- APPROVED DATE 2/2/97 *[Signature]* DIRECTOR OF PUBLIC UTILITIES
- APPROVED DATE 2/2/97 *[Signature]* ADMINISTRATOR, DIVISION OF WATER WATER STRUCTURES ONLY
- APPROVED DATE 2/2/97 *[Signature]* ADMINISTRATOR, DIVISION OF SEWERAGE AND DRAINAGE
- APPROVED DATE 2/2/97 *[Signature]* ADMINISTRATOR, DIVISION OF TRAFFIC
- APPROVED DATE 2/2/97 *[Signature]* ADMINISTRATOR FOR HELP
- APPROVED DATE 2/2/97 *[Signature]* DIRECTOR OF RECREATION AND PARKS

CENTERLINE PLAT

FRA-C.R. 68 (KING AVE.)

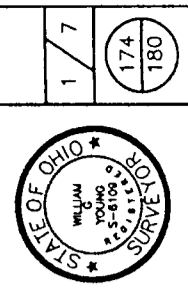
CITY OF COLUMBUS FRANKLIN COUNTY

RECEIVED _____, 19____
 RECORDED _____, 19____
 BOOK _____ PAGE _____
 COUNTY RECORDER _____

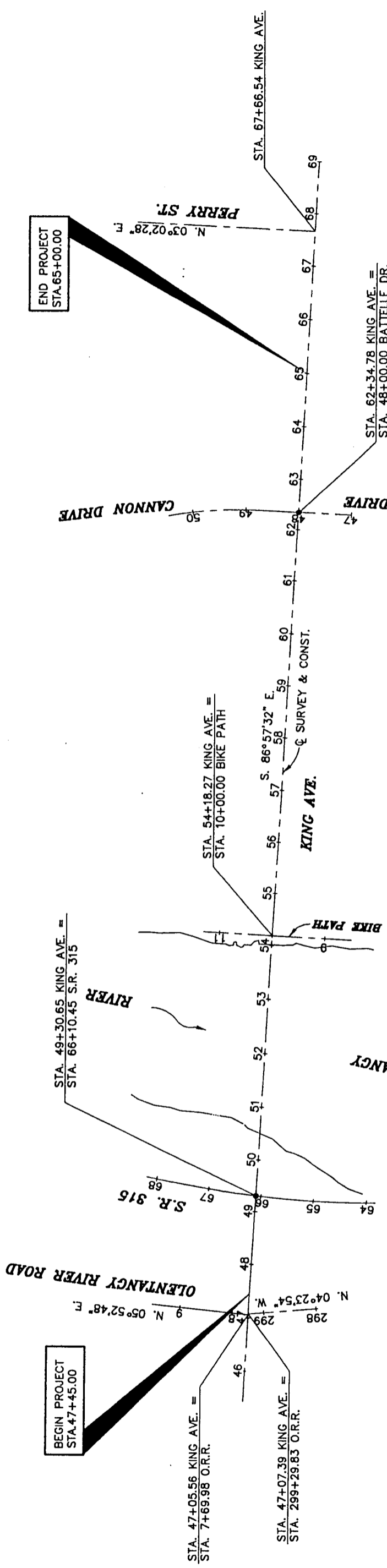
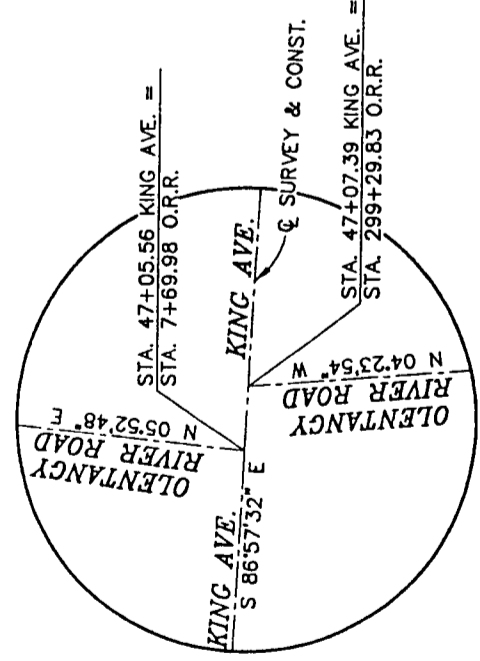


FEDERAL PROJECT NO. _____ STATE PROJECT NO. _____ CENTERLINE PLAT

FRA-C.R. 68 KING AVE.



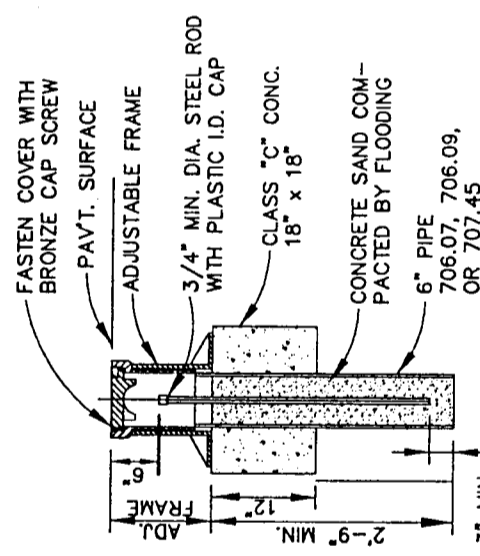
I HEREBY CERTIFY THAT THIS PLAT IS A TRUE DELINEATION OF A SURVEY MADE FOR FRANKLIN COUNTY IN 1997 BY ERIKSSON ENGINEERING LIMITED.
William G. Young
 WILLIAM G. YOUNG
 REGISTERED SURVEYOR NO. 6109 DATE 9.26.97
1564



ADJUSTABLE CENTERLINE MONUMENTS ARE SHOWN ON THE STANDARD CONSTRUCTION DRAWING RM-1.1M (4-8-97) OF THE OHIO DEPARTMENT OF TRANSPORTATION. THE PLACING OF THE MONUMENTS SHALL BE UNDER THE DIRECTION OF A REGISTERED SURVEYOR AND ARE TO BE SET AS SHOWN BY THE HIGHWAY CONTRACTOR AT THE TIME OF CONSTRUCTION. ANY ALTERATIONS, WITH PRIOR APPROVAL OF THE FRANKLIN COUNTY ENGINEER SHALL BE NOTED.

CONVERSION OF METRIC STANDARD DRAWINGS

THE METRIC STANDARD DRAWINGS REFERENCED IN THIS PLAN SHALL BE CONVERTED TO ENGLISH UNITS USING THE SI (METRIC) TO ENGLISH CONVERSION FACTORS PROVIDED IN SECTION 109.011 OF THE 1997 CONSTRUCTION AND MATERIALS SPECIFICATIONS. THE APPENDIX OF ASTM E 380 SHALL BE UTILIZED FOR ANY ADDITIONAL CONVERSION FACTORS REQUIRED. CONVERSIONS SHALL BE APPROPRIATELY PERCEIVED AND SHALL REFLECT STANDARD INDUSTRY ENGLISH VALUES WHERE SUITABLE.



MONUMENTS TO BE SET DURING CONSTRUCTION		
STATION	DIST. FROM C. OF SURVEY	MONUMENT ASSEMBLY
49+30.65	ON C.	1
62+34.78	ON C.	1
TOTAL TO SHEET 8		2

MONUMENT ASSEMBLY
 ADJUSTABLE CENTERLINE
 MONUMENT DETAIL

UTILITIES

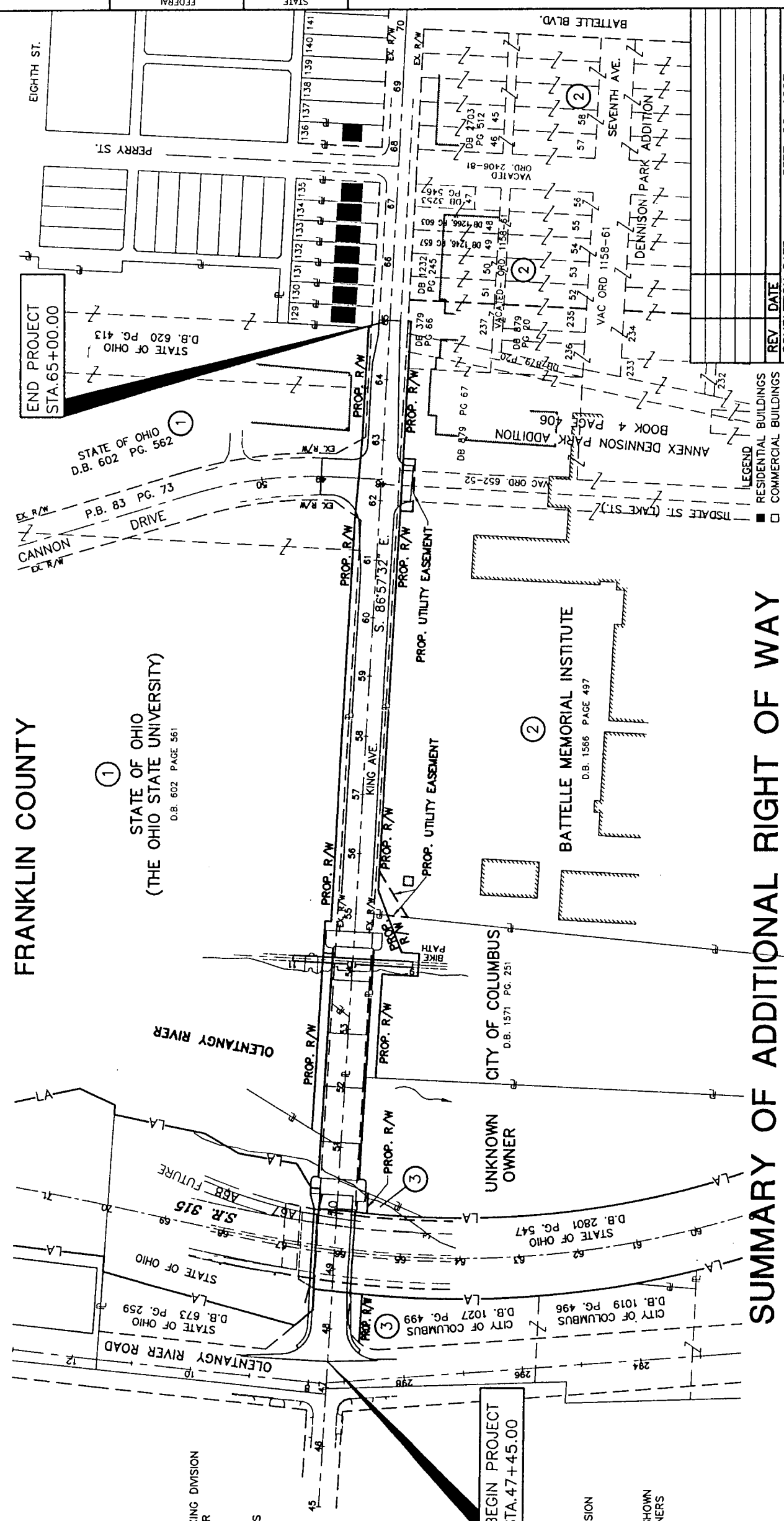
LISTED BELOW ARE ALL UTILITIES LOCATED WITHIN THE PROJECT CONSTRUCTION LIMITS TOGETHER WITH THEIR RESPECTIVE OWNERS:

- TELEPHONE : AMERITECH
100 NORTON RD.
COLUMBUS, OHIO 43228
614-223-7600
- GAS: COLUMBIA GAS OF OHIO
920 W. GOODALE BLVD.
COLUMBUS, OHIO 43212
614-460-2054
- ELECTRIC: AMERICAN ELECTRIC POWER
215 N. FRONT ST.
COLUMBUS, OHIO 43215
614-464-7666/7107
- TRAFFIC: CITY OF COLUMBUS
TRAFFIC ENGINEERING & PARKING DIVISION
109 N. FRONT ST. 2ND FLOOR
COLUMBUS, OHIO 43215
614-645-7790
- CABLE: TIME WARNER COMMUNICATIONS
1266 DUBLIN RD.
COLUMBUS, OHIO 43215
614-481-5361
- COMMUNICATIONS: LCI INTERNATIONAL
C/O JAY TEL INC.
ATTN: JAYARAM BORAUAH
2770 LEXINGTON AVE.
P.O. BOX 3168
MANSFIELD, OHIO 44904
419-884-0400
419-884-2291 FAX
- WATER/SEWER: METROCOMM AXS, L P
50 WEST BROAD ST.
SUITE M-18
COLUMBUS, OHIO 43215
614-221-9230
- CITY OF COLUMBUS
WATER DIVISION
910 DUBLIN RD.
COLUMBUS, OHIO 43215
614-645-7677
- CITY OF COLUMBUS
SEWERAGE AND DRAINAGE DIVISION
910 DUBLIN RD.
COLUMBUS, OHIO 43215
614-645-6311
- THE LOCATION OF THE UNDERGROUND UTILITIES SHOWN ON THE PLANS ARE AS OBTAINED FROM THE OWNERS AS REQUIRED BY SECTION 153.64 O.R.C.

FRA-C.R. 68 (KING AVE.)
CITY OF COLUMBUS
FRANKLIN COUNTY

STATE OF OHIO
(THE OHIO STATE UNIVERSITY)
D.B. 602 PAGE 561

ELIZABETH J. McMILLEN HOMESTEAD
PLAT BOOK 4, PAGE 400



SUMMARY OF ADDITIONAL RIGHT OF WAY

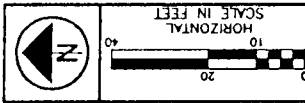
PARCEL	OWNER	SHEET NO.	OWNERS BOOK	RECORD PAGE	AUDITOR'S PARCEL	RECORD AREA	TOTAL P.R.O.	GROSS TAKE	P.R.O. IN TAKE	NET TAKE	STRUC-TURE	NET RESIDUE LEFT	NET RESIDUE RIGHT	TYPE FUND	REMARKS AND PERSONALTY	REV	DATE	COMPLETION DATE	AS ACQUIRED BOOK	PAGE	
1-WD	STATE OF OHIO (THE OHIO STATE UNIVERSITY)		602	561		25.193		0.522	0.154	0.368	NO	39.984						SEPT. 26, 1997			
			602	562		8.631 Calc.															
			620	413		6.682 Calc.															
1-T																					
1-T1																					
2-WD	BATTELLE MEMORIAL INSTITUTE		1566	497	010-067141	17.969 *		0.092	0	0.092		17.877									
			879	67	010-052338	1.373 Calc.		0.022	0	0.022		1.351									
			879	66	010-052338	0.389 Calc.		0.009	0	0.009		19.608									
						19.731		0.123	0	0.123											
2-U								0.034	0	0.034											
2-U1								0.040	0	0.040											
2-T								0.142	0	0.142											
2-T1								0.031	0	0.028											
3-WD			1027	499		0.575 Calc.		0.032	0	0.032											
3-WD1			1027	499		0.032 Calc.		0.012	0	0.012											
3-WD2			1571	251		5.904 Calc.		0.209	0	0.209											
3-T								0.030	0	0.030											
3-T1								0.520	0	0.520											
TOTALS																					
																1564	DR. E				

TOTAL NUMBER OF:
4 OWNERSHIPS
0 TOTAL TAKES
0 OWNERSHIP WITH STRUCTURE INVOLVED
0 OWNERSHIP WITH "P" ITEMS

PROPERTY MAP & R/W SUMMARY
STA. 47+48 TO STA. 69+00

FRA-C.R. NO. 68
KING AVE.

2 / 7
175
180

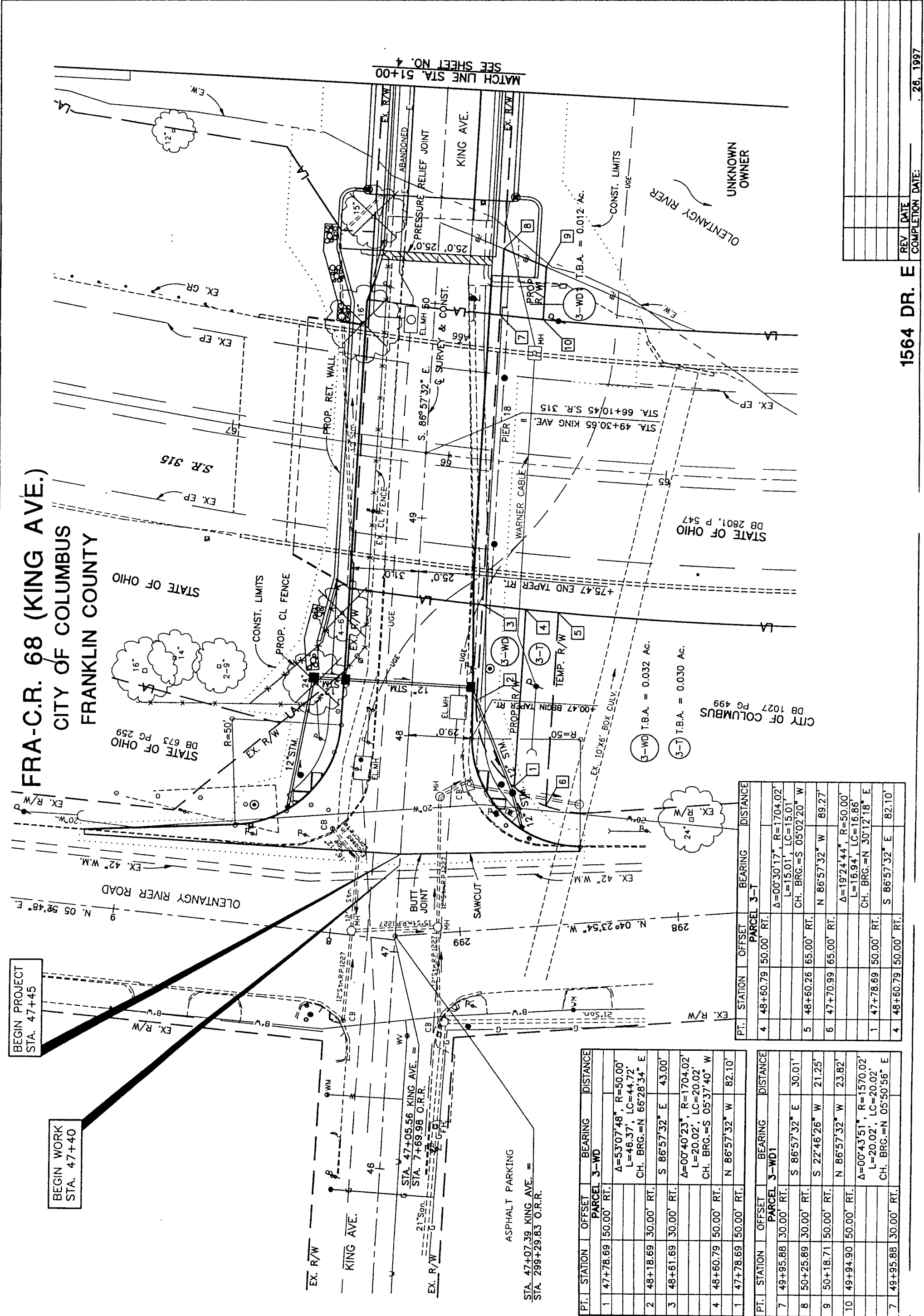


CHECKED
CALCULATED

RIGHT OF WAY PLAN
STA. 46+00 TO STA. 51+00

FRA-C.R. NO. 68
KING AVE.

176
180
3 7



FRA-C.R. 68 (KING AVE.)
CITY OF COLUMBUS
FRANKLIN COUNTY

BEGIN PROJECT
STA. 47+45

BEGIN WORK
STA. 47+40

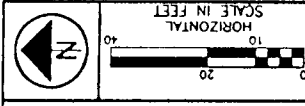
PT.	STATION	OFFSET	BEARING	DISTANCE
PARCEL 3-WD				
1	47+78.69	50.00'	RT.	
				$\Delta=53^{\circ}07'48"$, $R=50.00'$ $L=46.37'$, $LC=44.72'$ CH. BRG.=N 66°28'34" E
2	48+18.69	30.00'	RT.	
3	48+61.69	30.00'	RT.	
				$\Delta=00^{\circ}40'23"$, $R=1704.02'$ $L=20.02'$, $LC=20.02'$ CH. BRG.=S 05°37'40" W
4	48+60.79	50.00'	RT.	
1	47+78.69	50.00'	RT.	
				N 86°57'32" W 82.10'

PT.	STATION	OFFSET	BEARING	DISTANCE
PARCEL 3-WD1				
7	49+95.88	30.00'	RT.	
8	50+25.89	30.00'	RT.	
9	50+18.71	50.00'	RT.	
10	49+94.90	50.00'	RT.	
				$\Delta=00^{\circ}43'51"$, $R=1570.02'$ $L=20.02'$, $LC=20.02'$ CH. BRG.=N 05°50'56" E
7	49+95.88	30.00'	RT.	
				N 86°57'32" W 82.10'

PT.	STATION	OFFSET	BEARING	DISTANCE
PARCEL 3-T				
4	48+60.79	50.00'	RT.	
				$\Delta=00^{\circ}30'17"$, $R=1704.02'$ $L=15.01'$, $LC=15.01'$ CH. BRG.=S 05°02'20" W
5	48+60.26	65.00'	RT.	
6	47+70.99	65.00'	RT.	
				$\Delta=19^{\circ}24'44"$, $R=50.00'$ $L=16.94'$, $LC=16.86'$ CH. BRG.=N 30°12'18" E
1	47+78.69	50.00'	RT.	
4	48+60.79	50.00'	RT.	
				S 86°57'32" E 82.10'

3687RM1

1564 DR. E
REV. DATE
COMPLETION DATE: 26, 1997



CHECKED
CALCULATED

RIGHT OF WAY PLAN
STA. 51+00 TO STA. 56+00

FRA-C.R. NO. 68
KING AVE.

177
180
4 7

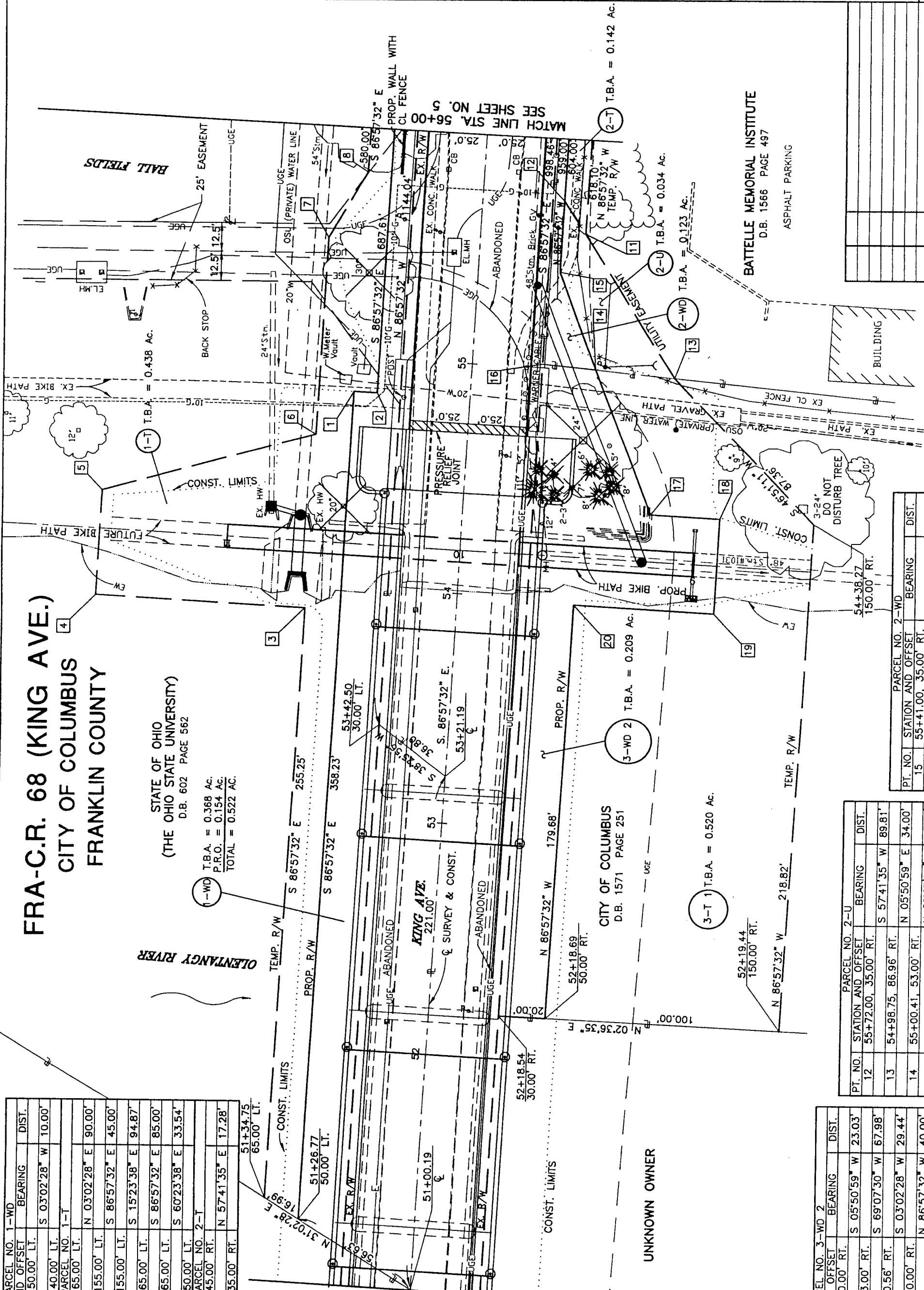
FRA-C.R. 68 (KING AVE.)
CITY OF COLUMBUS
FRANKLIN COUNTY

STATE OF OHIO
(THE OHIO STATE UNIVERSITY)
D.B. 602 PAGE 562

1-WD T.B.A. = 0.368 AC.
P.R.O. = 0.154 AC.
TOTAL = 0.522 AC.

PT. NO.	STATION AND OFFSET	BEARING	DIST.
1	54+85.00, 50.00' LT.	S 03°02'28" W	10.00'
2	54+85.00, 40.00' LT.	S 03°02'28" W	10.00'
PARCEL NO. 1-T			
3	53+90.00, 65.00' LT.	N 03°02'28" E	90.00'
4	53+90.00, 155.00' LT.	S 86°57'32" E	45.00'
5	54+35.00, 155.00' LT.	S 15°23'38" E	94.87'
6	54+65.00, 65.00' LT.	S 86°57'32" E	85.00'
7	55+50.00, 65.00' LT.	S 60°23'38" E	33.54'
8	55+80.00, 50.00' LT.	N 57°41'35" E	17.28'
PARCEL NO. 2-T			
11	55+57.90, 45.00' RT.	N 57°41'35" E	17.28'
12	55+72.00, 35.00' RT.	N 57°41'35" E	17.28'

SEE SHEET NO. 3
MATCH LINE STA. 51+00



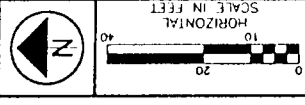
SEE SHEET NO. 5
MATCH LINE STA. 56+00

PT. NO.	STATION AND OFFSET	BEARING	DIST.
12	55+72.00, 35.00' RT.	S 57°41'35" W	89.81'
13	54+98.75, 86.96' RT.	N 05°50'59" E	34.00'
14	55+00.41, 53.00' RT.	N 69°07'30" E	44.40'
15	55+41.00, 35.00' RT.	S 86°57'32" E	31.00'
16	55+72.00, 35.00' RT.	S 86°57'32" E	31.00'

PT. NO.	STATION AND OFFSET	BEARING	DIST.
16	55+01.54, 30.00' RT.	S 05°50'59" W	23.03'
14	55+00.41, 53.00' RT.	S 69°07'30" W	67.98'
17	54+38.27, 80.56' RT.	S 03°02'28" W	29.44'
18	54+38.27, 110.00' RT.	N 86°57'32" W	40.00'
19	53+98.27, 110.00' RT.	N 03°02'28" E	60.00'
20	53+98.27, 50.00' RT.	N 03°02'28" E	60.00'

PT. NO.	STATION AND OFFSET	BEARING	DIST.
15	55+41.00, 35.00' RT.	S 69°07'30" W	44.40'
14	55+00.41, 53.00' RT.	N 05°50'59" E	23.03'
16	55+01.54, 30.00' RT.	N 05°50'59" E	23.03'

1564 DR. E
REVISIONS
DATE
COMPLETION DATE: SEPT. 28, 1997

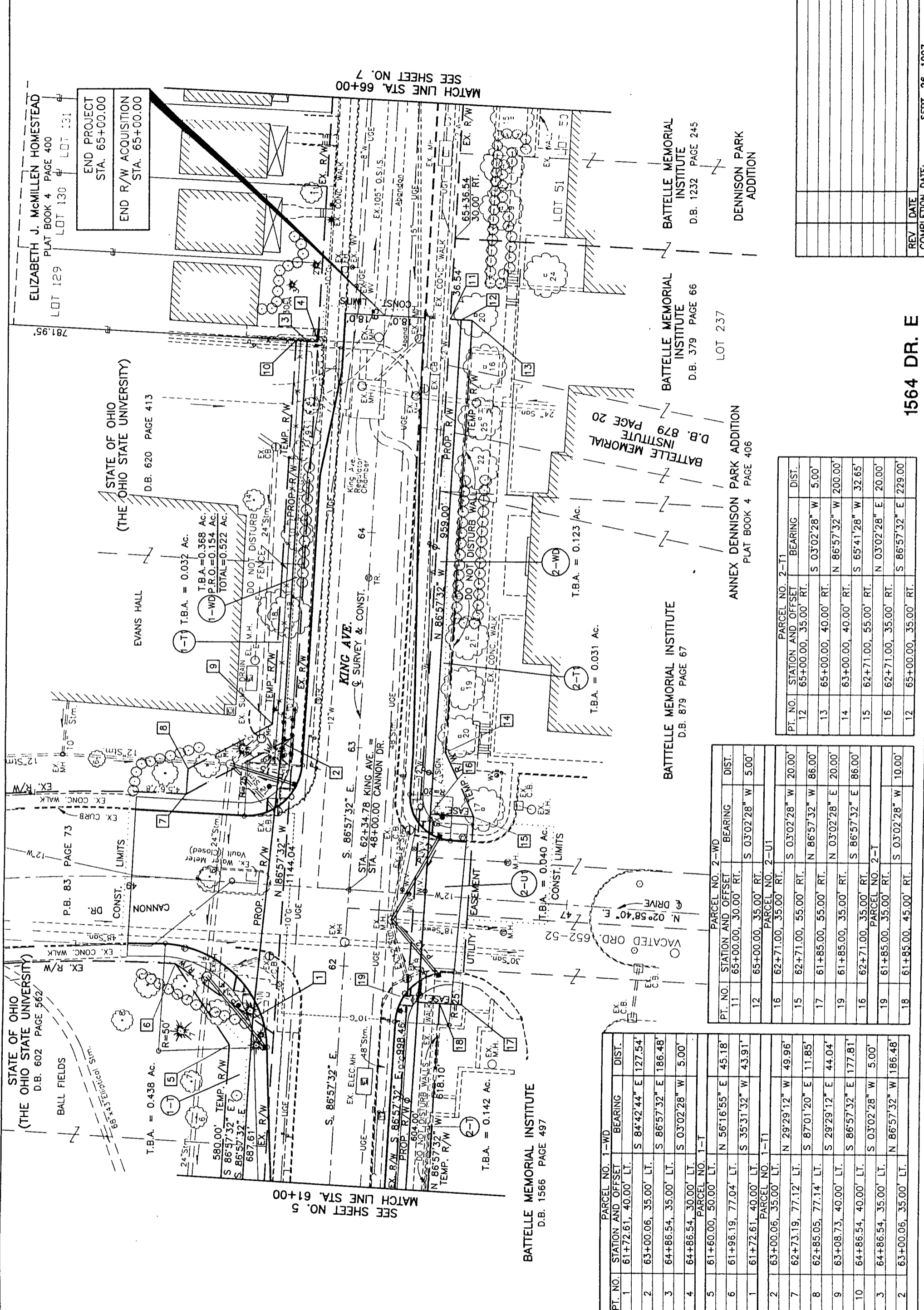


CHECKED
CALCULATED

RIGHT OF WAY PLAN
STA. 61+00 TO STA. 66+00

FRA-C.R. NO. 68
KING AVE.

179
180
6 / 7



SEE SHEET NO. 5
MATCH LINE STA. 61+00

SEE SHEET NO. 7
MATCH LINE STA. 66+00

PT. NO.	STATION AND OFFSET	BEARING	DIST.
1	61+72.61, 40.00' LT.	S 84°42'44" E	127.54'
2	63+00.06, 35.00' LT.	S 86°57'32" E	186.48'
3	64+86.54, 35.00' LT.	S 03°02'28" W	5.00'
4	64+86.54, 30.00' LT.	S 86°57'32" E	186.48'
5	61+60.00, 50.00' LT.	N 56°16'55" E	45.18'
6	61+96.19, 77.04' LT.	S 35°31'32" W	43.91'
1	61+72.61, 40.00' LT.	N 29°29'12" W	49.96'
2	63+00.06, 35.00' LT.	S 87°01'20" E	11.85'
7	62+73.19, 77.12' LT.	S 29°29'12" E	44.04'
8	62+85.05, 77.14' LT.	S 86°57'32" E	177.81'
9	63+08.73, 40.00' LT.	S 03°02'28" W	5.00'
10	64+86.54, 40.00' LT.	N 86°57'32" W	186.48'
3	64+86.54, 35.00' LT.	S 03°02'28" E	5.00'
2	63+00.06, 35.00' LT.	N 86°57'32" W	186.48'

PT. NO.	STATION AND OFFSET	BEARING	DIST.
11	65+00.00, 30.00' RT.	S 03°02'28" W	5.00'
12	65+00.00, 35.00' RT.	S 03°02'28" W	5.00'
16	62+71.00, 35.00' RT.	S 03°02'28" W	20.00'
15	62+71.00, 55.00' RT.	N 86°57'32" W	86.00'
17	61+85.00, 55.00' RT.	N 03°02'28" E	20.00'
19	61+85.00, 35.00' RT.	S 86°57'32" E	86.00'
16	62+71.00, 35.00' RT.	S 03°02'28" W	5.00'
19	61+85.00, 35.00' RT.	N 86°57'32" W	186.48'
18	61+85.00, 45.00' RT.	S 03°02'28" W	10.00'

PT. NO.	STATION AND OFFSET	BEARING	DIST.
12	65+00.00, 35.00' RT.	S 03°02'28" W	5.00'
13	65+00.00, 40.00' RT.	N 86°57'32" W	200.00'
14	63+00.00, 40.00' RT.	S 65°41'28" W	32.65'
15	62+71.00, 55.00' RT.	N 03°02'28" E	20.00'
16	62+71.00, 35.00' RT.	S 86°57'32" E	229.00'
12	65+00.00, 35.00' RT.	S 86°57'32" E	229.00'

BATTELLE MEMORIAL INSTITUTE
D.B. 1566 PAGE 497

BATTELLE MEMORIAL INSTITUTE
D.B. 879 PAGE 67

BATTELLE MEMORIAL INSTITUTE
D.B. 379 PAGE 66

BATTELLE MEMORIAL INSTITUTE
D.B. 1232 PAGE 245

LOT 237

ANNEX DENNISON PARK ADDITION
PLAT BOOK 4 PAGE 406

DENNISON PARK ADDITION

1564 DR. E

SEPT. 26, 1997

3687R4

