

LONG ROAD, CO. RD. NO. 220, FROM THE COLUMBUS CORP. LINE TO THE PICKERINGTON CORP. LINE, MADISON TOWNSHIP, FRANKLIN COUNTY, OHIO

October 19, 1994

Honorable Board of County Commissioners
Franklin County Administration Building
373 South High Street
Columbus, Ohio 43215

Honorable Board:

I hereby request that proceedings be initiated by your Honorable Board for the establishing, altering and widening of Long Road, County Road No. 220, from the City of Columbus corporation limit to the City of Pickerington corporation limit, Madison Township, Franklin County, Ohio, upon the following described centerline.

Beginning on Long Road at the Columbus corporation line, thence easterly approximately 1,300 feet to the City of Pickerington corporation line.

If the request for the above mentioned road improvement is deemed necessary by your Honorable Board, this office will be prepared to view the proposed location with you at your earliest convenience.

It is also requested that a consulting engineer be employed to assist me in preparing the necessary plans.

Respectfully submitted,

John Circle, P.E., P.S.
Franklin County Engineer

JC:JG:cmc

RESOLUTION NO. 1016-94

October 25, 1994

ESTABLISHING, ALTERING AND WIDENING
LONG ROAD, COUNTY ROAD NO. 220, FROM THE
CITY OF COLUMBUS CORPORATION LINE TO THE
CITY OF PICKERINGTON CORPORATION LINE,
MADISON TOWNSHIP, DECLARED NECESSARY
BY UNANIMOUS VOTE OF THE BOARD OF COUNTY
COMMISSIONERS OF FRANKLIN COUNTY, OHIO -
VIEW - NOVEMBER 15, 1994 AT 10:00 A.M.
(FRANKLIN COUNTY ENGINEER)

WHEREAS, Section 5553.04 of the Ohio Revised Code, provided that when the Board of County Commissioners is of the opinion that it will be necessary for the public convenience and welfare to locate, establish, alter, widen, straighten, vacate or change the direction of a public road, it shall so declare by resolution; now, therefore, upon motion of Commissioner Foulk, seconded by Commissioner Shoemaker.

BE IT RESOLVED, BY THE BOARD OF COUNTY COMMISSIONERS OF FRANKLIN COUNTY, OHIO:

Section 1) That it is necessary for the public convenience and welfare that proceedings be initiated to establish, alter, and widen Long Road, County Road No. 220, from the City of Columbus corporation line to the City of Pickerington corporation line, Madison Township, Franklin County, Ohio, to variable widths upon the following described centerline:

Beginning on Long Road at the Columbus corporation line, thence easterly approximately 1,300 feet to the City of Pickerington corporation line.

Section 2) That Tuesday, November 15, 1994, at 10:00 a.m. on the line of said proposed improvement be and the same is hereby fixed as the time and place for viewing Long Road, County Road No. 220, from the City of Columbus corporation line to the City of Pickerington corporation line, Madison Township, Franklin County, Ohio.

Section 3) That the Clerk of the Board of County Commissioners of Franklin County, Ohio, be and hereby is directed to cause legal publication thereof to be made in accordance with the law.

Voting Aye thereon: Dorothy S. Teater, Jack Foulk and Arlene Shoemaker.

LONG ROAD, CO. RD. NO. 220, FROM THE COLUMBUS CORP. LINE TO THE PICKERINGTON CORP. LINE, MADISON TOWNSHIP, FRANKLIN COUNTY, OHIO, Cont'd.

NOTICE OF INTENTION TO ESTABLISH, ALTER AND WIDEN LONG ROAD, COUNTY ROAD NO. 220, FROM THE CITY OF COLUMBUS CORPORATION LINE TO THE CITY OF PICKERINGTON CORPORATION LINE, MADISON TOWNSHIP, FRANKLIN COUNTY, OHIO

NOTICE is hereby given that it is the intention of the Board of County Commissioners of Franklin County, Ohio, to establish, alter and widen Long Road, County Road No. 220, from the City of Columbus corporation line to the City of Pickerington corporation line, Madison Township, Franklin County, Ohio, to variable widths upon the following described centerline:

Beginning at the City of Columbus corporation line thence easterly approximately 1,300 feet to the City of Pickerington corporation line.

NOTICE is hereby given that Tuesday, November 15, 1994 at 10:00 a.m. on the line of said proposed road improvement was fixed as the time and place for viewing thereof and the final hearing for the improvement will be held at the office of the Board of County Commissioners.

By order of the Board of County Commissioners of Franklin County, Ohio.

Sharon Y. Bice, Clerk
Franklin County Commissioners

PUBLISHED - Tuesday, November 1, 1994 and November 8, 1994.

RESOLUTION NO. 1110-94

November 15, 1994

ESTABLISHING, ALTERING AND WIDENING OF LONG ROAD, COUNTY ROAD NO. 220, FROM THE CITY OF COLUMBUS CORPORATION LINE TO THE CITY OF PICKERINGTON CORPORATION LINE, MADISON TOWNSHIP, FRANKLIN COUNTY, OHIO - VIEWED - ENGINEER TO FILE PLANS AS NECESSARY (FRANKLIN COUNTY ENGINEER)

WHEREAS, on October 25, 1994, the Board of County Commissioners of Franklin County, Ohio, adopted a resolution declaring it necessary to establish, alter and widen Long Road, County Road No. 220, from the City of Columbus corporation line to the City of Pickerington corporation line, Madison Township, Franklin County, Ohio; and

WHEREAS, on October 25, 1994, said Board of County Commissioners did fix the 15th day of November, 1994, on the line of said proposed improvement as the time and place for the viewing thereof; and

WHEREAS, legal notice was published in a newspaper of general circulation in said County was given of the time and place for the viewing of said establishing, altering and widening, and of the final hearing thereof; and

WHEREAS, the Board of County Commissioners of Franklin County, Ohio, did on the 15th day of November, 1994, the day fixed for the viewing of said proposed establishing, altering and widening of Long Road, County Road No. 220, from the City of Columbus corporation line to the City of Pickerington corporation line, Madison Township, Franklin County, Ohio meet on the line thereof as described in said resolution of October 25, 1994, and heard all the proof offered by parties interested in the affected thereby and other persons competent to testify, and did go over and along the line of said proposed improvement and the premises adjacent thereto, which are to be affected thereby and does find that the establishing, altering and widening of Long Road, County Road No. 220, from the City of Columbus corporation line to the City of Pickerington corporation line, Madison Township, Franklin County, Ohio, is of sufficient importance to require that the Engineer of Franklin County, Ohio be instructed and directed to make a survey and plat; now, therefore, upon motion of Commissioner Foulk, seconded by Commissioner Shoemaker.

BE IT RESOLVED, BY THE BOARD OF COUNTY COMMISSIONERS OF FRANKLIN COUNTY, OHIO:

Section 1) That the Engineer of Franklin County, Ohio, be and hereby is authorized and instructed to make a survey and plat of the proposed establishing, altering and widening of Long Road, County Road No. 220, from the City of Columbus corporation line to the City of Pickerington corporation line, Madison Township, Franklin County, Ohio, an accurate and detailed description of each tract of land which will be necessary to be taken, together with the names of each owner, shall set stakes and the termini of each right of way line and at all angles between such termini and at sufficient other points in the right of way lines so that the bounds of the proposed herein described road establishing, altering and widening may be discernible to the property owners and others interested and make report to the Board of County Commissioners on or before the advertised date, said report shall set forth the opinion of the County Engineer either for or against the granting of said improvement, which report together with the survey and plat of the proposed improvement be deposited with the County Commissioners.

Section 2) That the Franklin County Engineer, by his request is hereby authorized and directed to investigate and recommend to this Board a Consulting Engineer to be employed to assist him in the preparation of plans and all other related documents for the above mentioned improvement.

Voting Aye thereon: Dorothy S. Teater, Jack Foulk and Arlene Shoemaker.

LONG ROAD, CO. RD. NO. 220, FROM THE COLUMBUS CORP. LINE TO THE PICKERINGTON CORP. LINE, MADISON TOWNSHIP, FRANKLIN COUNTY, OHIO, Cont'd.

NOTICE OF INTENTION TO PURCHASE RIGHT OF WAY FOR THE CONSTRUCTION OF LONG ROAD, COUNTY ROAD NO. 220, FROM THE CITY OF COLUMBUS CORPORATION LINE TO THE CITY OF PICKERINGTON CORPORATION LINE, MADISON TOWNSHIP, FRANKLIN COUNTY, OHIO

NOTICE is hereby given that it is the intention of the Board of County Commissioners of Franklin County, Ohio, to purchase the right of way necessary for the construction of Long Road, County Road No. 220, from the City of Columbus corporation line to the City of Pickerington corporation line, Madison Township, Franklin County, Ohio, located upon the following described centerline:

Beginning at the City of Columbus corporation line thence easterly approximately 1,300 feet to the City of Pickerington corporation line.

NOTICE is hereby given that Tuesday, January 17, 1995 at 9:15 a.m. at the Office of the Board of County Commissioners was fixed as the time and place for hearing all petitions and remonstrances against the proposed purchasing of additional right of way for the construction of Long Road, County Road No. 220, from the City of Columbus corporation line to the City of Pickerington corporation line, Madison Township, Franklin County, Ohio.

By order of the Board of County Commissioners of Franklin County, Ohio.

Sharon Bice, Clerk
Franklin County Commissioners

Published - Tuesday, January 3 and January 10, 1995.

January 11, 1995

Honorable Board of County Commissioners
Franklin County Administration Building
373 South High Street
Columbus, Ohio 43215

Honorable Board:

Pursuant to your resolution of October 25, 1994, I have prepared right of way plans for the establishing, altering and widening of Long Road, County Road No. 220, from the City of Columbus corporation line to the City of Pickerington corporation line, Madison Township, Franklin County, Ohio.

It is my recommendation that the right of way plans for the Long Road improvement be approved as submitted.

Respectfully submitted,

John Circle, P.E., P.S.
Franklin County Engineer

JC:JG:cmc

LONG ROAD, CO. RD. NO. 220, FROM THE COLUMBUS CORP. LINE TO THE PICKERINGTON CORP. LINE, MADISON TOWNSHIP, FRANKLIN COUNTY, OHIO, Cont'd.

RESOLUTION NO. 60-95

January 17, 1995

FINAL HEARING FOR ESTABLISHING, ALTERING, AND WIDENING OF LONG ROAD, COUNTY ROAD NO. 220, FROM THE CITY OF COLUMBUS CORPORATION LINE TO THE CITY OF PICKERINGTON CORPORATION LINE, MADISON TOWNSHIP, FRANKLIN COUNTY, OHIO (FRANKLIN COUNTY ENGINEER)

WHEREAS, on the 25th of October, 1994, the Board of County Commissioners of Franklin County, Ohio, adopted a resolution declaring it necessary to establish, alter and widen Long Road, County Road No. 220, from the City of Columbus corporation line to the City of Pickerington corporation line, Madison Township, Franklin County, Ohio, and report to said Board on or before January 17, 1995, said report to be in manner and form prescribed in Section 5553:06 et seq. of the Ohio Revised Code; and

WHEREAS, this January 17, 1995, was fixed as the final hearing in said matter and the County Engineer having filed his report thereon and plats thereof and recommends that Long Road, County Road No. 220, from the City of Columbus corporation line to the City of Pickerington corporation line, Madison Township, Franklin County, Ohio, be improved to variable widths, as described in said report and shown on said plats; and

WHEREAS, no objections to the improvement were made; and

WHEREAS, the Board of County Commissioners of Franklin County, Ohio, finds the public convenience and welfare requires the establishing, altering and widening of Long Road, County Road No. 220, from the City of Columbus corporation line to the City of Pickerington corporation line, Madison Township, Franklin County, Ohio, as shown in the reports and on the plats submitted by the County Engineer; now, therefore upon motion of Commissioner Teater, seconded by Commissioner Stokes.

BE IT RESOLVED, BY THE BOARD OF COUNTY COMMISSIONERS OF FRANKLIN COUNTY, OHIO:

Section 1) That said Long Road improvement, herein referred to is hereby found and determined to be of sufficient importance to the public convenience and welfare to cause the above establishing, altering and widening, as recommended by the County Engineer and as shown on the plat submitted by the County Engineer.

Section 2) That the Franklin County Engineer at his request is hereby authorized and directed to investigate and recommend the employment of competent appraisers to aid him in determining the value of the land to be acquired.

Voting Aye thereon: Arlene Shoemaker, Dorothy S. Teater and Dewey R. Stokes.

February 15, 1995

Honorable Board of County Commissioners Franklin County Administration Building 373 South High Street Columbus, Ohio 43215

Honorable Board:

After negotiating with a portion of the owners abutting Long Road, County Road No. 220, from the City of Columbus corporation line to the City of Pickerington corporation line, Madison Township, Franklin County, Ohio, for the purchase of additional land needed for road purposes, I hereby submit for your consideration the following recommendation as to the amount of compensation and damages to be awarded to the owners of land sought to be appropriated.

AUD.'S	ENGR'S		
<u>PAR. NO.</u>	<u>PAR. NO.</u>	<u>NAME</u>	<u>AMOUNT</u>
472	11-WD,T	Claude L. Pennington	\$ 1,444.00

I am of the opinion that the sums above recommended to be paid to this portion of the owners to be just and equitable for the land taken and damages sustained by reason of the improvement of Long Road, County Road No. 220, from the City of Columbus corporation line to the City of Pickerington corporation line, Madison Township, Franklin County, Ohio.

Respectfully submitted,

John Circle, P.E., P.S. Franklin County Engineer

LONG ROAD, CO. RD. NO. 220, FROM THE COLUMBUS CORP. LINE TO THE PICKERINGTON CORP. LINE, MADISON TOWNSHIP, FRANKLIN COUNTY, OHIO, Cont'd.

RESOLUTION NO. 182-95

February 21, 1995

REPORT (FIRST) OF THE COUNTY ENGINEER AND ESTABLISHING SUMS FOR COMPENSATION AND DAMAGES FOR A PORTION OF THE OWNERS IN THE MATTER OF THE IMPROVEMENT OF LONG ROAD, COUNTY ROAD NO. 220, FROM THE CITY OF COLUMBUS CORPORATION LINE TO THE CITY OF PICKERINGTON CORPORATION LINE, MADISON TOWNSHIP, FRANKLIN COUNTY, OHIO (FRANKLIN COUNTY ENGINEER)

WHEREAS, on the 17th day of January, 1995, the Board of County Commissioners did by resolution duly adopted find in favor of improving a portion of Long Road, County Road No. 220, from the City of Columbus corporation line to the City of Pickerington corporation line, Madison Township, Franklin County, Ohio; and

WHEREAS, the Franklin County Engineer has negotiated with a portion of the property owners abutting Long Road, County Road No. 220, from the City of Columbus corporation line to the City of Pickerington corporation line, Madison Township, Franklin County, Ohio; and

WHEREAS, the Franklin County Engineer has advised this Board by letter dated February 15, 1995, that it is his recommendation that the following amounts of compensation and damages to be awarded to the owners of land sought to be appropriated; now, therefore, upon motion of Commissioner Teater, seconded by Commissioner Stokes.

AUD.'S PAR. NO.	ENGR'S PAR. NO.	NAME	AMOUNT
472	11-WD,T	Claude L. Pennington	\$ 1,444.00

BE IT RESOLVED, BY THE BOARD OF COUNTY COMMISSIONERS OF FRANKLIN COUNTY, OHIO:

Section 1) That after due consideration the amounts of compensation and damages as recommended by the Franklin County Engineer for the improvement of Long Road, County Road No. 220, from the City of Columbus corporation line to the City of Pickerington corporation line, Madison Township, Franklin County, Ohio, are just and equitable for the lands taken and damages sustained by reason of said road improvement are hereby approved.

Voting Aye thereon: Arlene Shoemaker, Dorothy S. Teater and Dewey R. Stokes.

March 15, 1995

Honorable Board of County Commissioners
Franklin County Administration Building
373 South High Street
Columbus, Ohio 43215

Honorable Board:

After negotiating with a portion of the owners abutting Long Road, County Road No. 220, from the City of Columbus corporation line to the City of Pickerington corporation line, Madison Township, Franklin County, Ohio, for the purchase of additional land needed for road purposes, I hereby submit for your consideration the following recommendation as to the amount of compensation and damages to be awarded to the owners of land sought to be appropriated.

AUD.'S PAR. NO.	ENGR'S PAR. NO.	NAME	AMOUNT
116547	19-WD,T	Roger L. & Sandra J. Jones	\$ 11,895.00
12	20-WD	Terry A. & Mary E. Sweany	1,047.00
191394	18-WD,T	Robert J. Weiler, Jr.	1,750.00
Total			\$ 14,692.00

I am of the opinion that the sums above recommended to be paid to this portion of the owners to be just and equitable for the land taken and damages sustained by reason of the improvement of Long Road, County Road No. 220, from the City of Columbus corporation line to the City of Pickerington corporation line, Madison Township, Franklin County, Ohio.

Respectfully submitted,

John Circle, P.E., P.S.
Franklin County Engineer

JC:JG:cmc

LONG ROAD, CO. RD. NO. 220, FROM THE COLUMBUS CORP. LINE TO THE PICKERINGTON CORP. LINE, MADISON TOWNSHIP, FRANKLIN COUNTY, OHIO, Cont'd.

RESOLUTION NO. 272-95

March 21, 1995

REPORT (SECOND) OF THE COUNTY ENGINEER AND ESTABLISHING SUMS FOR COMPENSATION AND DAMAGES FOR A PORTION OF THE OWNERS IN THE MATTER OF THE IMPROVEMENT OF LONG ROAD, COUNTY ROAD NO. 220, FROM THE CITY OF COLUMBUS CORPORATION LINE TO THE CITY OF PICKERINGTON CORPORATION LINE, MADISON TOWNSHIP, FRANKLIN COUNTY, OHIO (FRANKLIN COUNTY ENGINEER)

WHEREAS, on the 17th day of January, 1995, the Board of County Commissioners did by resolution duly adopted find in favor of improving a portion of Long Road, County Road No. 220, from the City of Columbus corporation line to the City of Pickerington corporation line, Madison Township, Franklin County, Ohio; and

WHEREAS, the Franklin County Engineer has negotiated with a portion of the property owners abutting Long Road, County Road No. 220, from the City of Columbus corporation line to the City of Pickerington corporation line, Madison Township, Franklin County, Ohio; and

WHEREAS, the Franklin County Engineer has advised this Board by letter dated March 15, 1995, that it is his recommendation that the following amounts of compensation and damages to be awarded to the owners of land sought to be appropriated; now, therefore, upon motion of Commissioner Stokes, seconded by Commissioner Teater.

<u>AUD.'S</u>	<u>ENGR'S</u>	<u>NAME</u>	<u>AMOUNT</u>
<u>PAR. NO.</u>	<u>PAR. NO.</u>		
116547	19-WD,T	Roger L. & Sandra J. Jones	\$ 11,895.00
12	20-WD	Terry A. & Mary E. Sweany	1,047.00
191394	18-WD,T	Robert J. Weiler, Jr.	1,750.00
		Total	\$ 14,692.00

BE IT RESOLVED, BY THE BOARD OF COUNTY COMMISSIONERS OF FRANKLIN COUNTY, OHIO:

Section 1) That after due consideration the amounts of compensation and damages as recommended by the Franklin County Engineer for the improvement of Long Road, County Road No. 220, from the City of Columbus corporation line to the City of Pickerington corporation line, Madison Township, Franklin County, Ohio, are just and equitable for the lands taken and damages sustained by reason of said road improvement are hereby approved.

Voting Aye thereon: Dorothy S. Teater and Dewey R. Stokes.

April 5, 1995

Honorable Board of County Commissioners
Franklin County Administration Building
373 South High Street
Columbus, Ohio 43215

Honorable Board:

After negotiating with a portion of the owners abutting Long Road, County Road No. 220, from the City of Columbus corporation line to the City of Pickerington corporation line, Madison Township, Franklin County, Ohio, for the purchase of additional land needed for road purposes, I hereby submit for your consideration the following recommendation as to the amount of compensation and damages to be awarded to the owners of land sought to be appropriated.

<u>AUD.'S</u>	<u>ENGR'S</u>	<u>NAME</u>	<u>AMOUNT</u>
<u>PAR. NO.</u>	<u>PAR. NO.</u>		
17	14-WD,T	Steve C. & Debra A. Delaney	\$ 1,001.00

I am of the opinion that the sums above recommended to be paid to this portion of the owners to be just and equitable for the land taken and damages sustained by reason of the improvement of Long Road, County Road No. 220, from the City of Columbus corporation line to the City of Pickerington corporation line, Madison Township, Franklin County, Ohio.

Respectfully submitted,

John Circle, P.E., P.S.
Franklin County Engineer

JC:JJG:cmc

RESOLUTION NO. 340-95

April 11, 1995

REPORT (THIRD) OF THE COUNTY ENGINEER AND
 ESTABLISHING SUMS FOR COMPENSATION AND
 DAMAGES FOR A PORTION OF THE OWNERS IN
 THE MATTER OF THE IMPROVEMENT OF LONG
 ROAD, COUNTY ROAD NO. 220, FROM THE CITY
 OF COLUMBUS CORPORATION LINE TO THE
 CITY OF PICKERINGTON CORPORATION LINE,
 MADISON TOWNSHIP, FRANKLIN COUNTY, OHIO
 (FRANKLIN COUNTY ENGINEER)

WHEREAS, on the 17th day of January, 1995, the Board of County
 Commissioners did by resolution duly adopted find in favor of improving a portion of Long
 Road, County Road No. 220, from the City of Columbus corporation line to the City of
 Pickerington corporation line, Madison Township, Franklin County, Ohio; and

WHEREAS, the Franklin County Engineer has negotiated with a portion of the
 property owners abutting Long Road, County Road No. 220, from the City of Columbus
 corporation line to the City of Pickerington corporation line, Madison Township, Franklin
 County, Ohio; and

WHEREAS, the Franklin County Engineer has advised this Board by letter
 dated April 5, 1995, that it is his recommendation that the following amounts of compensation
 and damages to be awarded to the owners of land sought to be appropriated; now, therefore,
 upon motion of Commissioner Teater, seconded by Commissioner Stokes.

<u>AUD.'S</u>	<u>ENGR'S</u>	<u>NAME</u>	<u>AMOUNT</u>
<u>PAR. NO.</u>	<u>PAR. NO.</u>		
17	14-WD,T	Steve C. & Debra A. Delaney	\$ 1,001.00

BE IT RESOLVED, BY THE BOARD OF COUNTY COMMISSIONERS OF
 FRANKLIN COUNTY, OHIO:

Section 1) That after due consideration the amounts of compensation and
 damages as recommended by the Franklin County Engineer for the improvement
 of Long Road, County Road No. 220, from the City of Columbus corporation
 line to the City of Pickerington corporation line, Madison Township, Franklin
 County, Ohio, are just and equitable for the lands taken and damages sustained
 by reason of said road improvement are hereby approved.

Voting Aye thereon: Arlene Shoemaker, Dorothy S. Teater and Dewey R. Stokes.

April 12, 1995

Honorable Board of County Commissioners
 Franklin County Administration Building
 373 South High Street
 Columbus, Ohio 43215

Honorable Board:

After negotiating with a portion of the owners abutting Long Road, County Road No.
 220, from the City of Columbus corporation line to the City of Pickerington corporation line,
 Madison Township, Franklin County, Ohio, for the purchase of additional land needed for road
 purposes, I hereby submit for your consideration the following recommendation as to the
 amount of compensation and damages to be awarded to the owners of land sought to be
 appropriated.

<u>AUD.'S</u>	<u>ENGR'S</u>	<u>NAME</u>	<u>AMOUNT</u>
<u>PAR. NO.</u>	<u>PAR. NO.</u>		
471	12-WD,T	Steven M. & Gretchen M. Bechtel	\$ 16,000.00
183	13-WD,T	Samuel E. Winters, Jr.	2,390.00
		Total	\$ 18,390.00

I am of the opinion that the sums above recommended to be paid to this portion of the
 owners to be just and equitable for the land taken and damages sustained by reason of the
 improvement of Long Road, County Road No. 220, from the City of Columbus corporation line
 to the City of Pickerington corporation line, Madison Township, Franklin County, Ohio.

Respectfully submitted,

John Circle, P.E., P.S.
 Franklin County Engineer

JC:JG:cmc

LONG ROAD, CO. RD. NO. 220, FROM THE COLUMBUS CORP. LINE TO THE PICKERINGTON CORP. LINE, MADISON TOWNSHIP, FRANKLIN COUNTY, OHIO, Cont'd.

RESOLUTION NO. 379-95

April 18, 1995

REPORT (FOURTH) OF THE COUNTY ENGINEER AND ESTABLISHING SUMS FOR COMPENSATION AND DAMAGES FOR A PORTION OF THE OWNERS IN THE MATTER OF THE IMPROVEMENT OF LONG ROAD, COUNTY ROAD NO. 220, FROM THE CITY OF COLUMBUS CORPORATION LINE TO THE CITY OF PICKERINGTON CORPORATION LINE, MADISON TOWNSHIP, FRANKLIN COUNTY, OHIO (FRANKLIN COUNTY ENGINEER)

WHEREAS, on the 17th day of January, 1995, the Board of County Commissioners did by resolution duly adopted find in favor of improving a portion of Long Road, County Road No. 220, from the City of Columbus corporation line to the City of Pickerington corporation line, Madison Township, Franklin County, Ohio; and

WHEREAS, the Franklin County Engineer has negotiated with a portion of the property owners abutting Long Road, County Road No. 220, from the City of Columbus corporation line to the City of Pickerington corporation line, Madison Township, Franklin County, Ohio; and

WHEREAS, the Franklin County Engineer has advised this Board by letter dated April 12, 1995, that it is his recommendation that the following amounts of compensation and damages to be awarded to the owners of land sought to be appropriated; now, therefore, upon motion of Commissioner Teater, seconded by Commissioner Stokes.

<u>AUD.'S</u>	<u>ENGR'S</u>	<u>NAME</u>	<u>AMOUNT</u>
<u>PAR. NO.</u>	<u>PAR. NO.</u>		
471	12-WD,T	Steven M. & Gretchen M. Bechtel	\$ 16,000.00
183	13-WD,T	Samuel E. Winters, Jr.	2,390.00
		Total	\$ 18,390.00

BE IT RESOLVED, BY THE BOARD OF COUNTY COMMISSIONERS OF FRANKLIN COUNTY, OHIO:

Section 1) That after due consideration the amounts of compensation and damages as recommended by the Franklin County Engineer for the improvement of Long Road, County Road No. 220, from the City of Columbus corporation line to the City of Pickerington corporation line, Madison Township, Franklin County, Ohio, are just and equitable for the lands taken and damages sustained by reason of said road improvement are hereby approved.

Section 2) That the following purchase orders are hereby approved for Steven M. and Gretchen M. Bechtel, \$16,000.00, purchase order 5P94409 and Samuel E. Winters, Jr., \$2,390.00, purchase order 5P94410, and a copy of each is attached.

Voting Aye thereon: Arlene Shoemaker, Dorothy S. Teater and Dewey R. Stokes.

April 12, 1995

Honorable Board of County Commissioners
Franklin County Administration Building
373 South High Street
Columbus, Ohio 43215

Honorable Board:

Pursuant to your resolution of October 25, 1994, I have prepared plans, profiles, specifications, estimates of cost and all other information required by the County Engineer, for the improvement to Long Road, County Road No. 220, from the City of Columbus corporation line to the City of Pickerington corporation line, Madison Township, Franklin County, Ohio.

It is my recommendation that the Long Road project be approved as shown on the submitted plans.

Respectfully submitted,

John Circle, P.E., P.S.
Franklin County Engineer

JC:JJG:cmc

LONG ROAD, CO. RD. NO. 220, FROM THE COLUMBUS CORP. LINE TO THE PICKERINGTON CORP. LINE, MADISON TOWNSHIP, FRANKLIN COUNTY, OHIO, Cont'd.

RESOLUTION NO. 398-95

April 18, 1995

PLANS APPROVED FOR THE IMPROVING OF LONG ROAD, COUNTY ROAD NO. 220, FROM THE CITY OF COLUMBUS CORPORATION LINE TO THE CITY OF PICKERINGTON CORPORATION LINE, MADISON TOWNSHIP, FRANKLIN COUNTY, OHIO (FRANKLIN COUNTY ENGINEER)

WHEREAS, the Board of County Commissioners of Franklin County, Ohio, directed the Engineer of Franklin County, Ohio, to make a survey, plans, profiles, specifications and estimates for the improvement of Long Road, County Road No. 220, from the City of Columbus corporation line to the City of Pickerington corporation line, Madison Township, Franklin County, Ohio; and

WHEREAS, pursuant to legal publication, this being the day and hour fixed for stating objections of said improvement; and

WHEREAS, no objections to the improvement were filed; now, therefore, upon motion of Commissioner Teater, seconded by Commissioner Stokes.

BE IT RESOLVED, BY THE BOARD OF COUNTY COMMISSIONERS OF FRANKLIN COUNTY, OHIO:

Section 1) That it is the opinion of said Board that the public utility convenience and welfare require that such improvement be made, that the cost and expense thereof and that the plans, profiles, specifications, estimate of the quantities and cost estimates therefore as submitted by the County Engineer be and they hereby are accepted and approved, and that said road improvement be completed as specified.

Section 2) That sealed bids for the above mentioned project will be opened on Thursday, May 18, 1995.

Voting Aye thereon: Arlene Shoemaker, Dorothy S. Teater and Dewey R. Stokes.

June 7, 1995

Honorable Board of County Commissioners
Franklin County Administration Building
373 South High Street
Columbus, Ohio 43215

Honorable Board:

After negotiating with a portion of the owners abutting Long Road, County Road No. 220, from the City of Columbus corporation line to the City of Pickerington corporation line, Madison Township, Franklin County, Ohio, for the purchase of additional land needed for road purposes, I hereby submit for your consideration the following recommendation as to the amount of compensation and damages to be awarded to the owners of land sought to be appropriated.

Table with 4 columns: AUD.'S PAR. NO., ENGR'S PAR. NO., NAME, AMOUNT. Row 1: 471, 12-WD,T, Steven M. & Gretchen M. Bechtel, \$ 155.00

I am of the opinion that the sums above recommended to be paid to this portion of the owners to be just and equitable for the land taken and damages sustained by reason of the improvement of Long Road, County Road No. 220, from the City of Columbus corporation line to the City of Pickerington corporation line, Madison Township, Franklin County, Ohio.

Respectfully submitted,

John Circle, P.E., P.S.
Franklin County Engineer

JC:JJG:cmc

LONG ROAD, CO. RD. NO. 220, FROM THE COLUMBUS CORP. LINE TO THE PICKERINGTON CORP. LINE, MADISON TOWNSHIP, FRANKLIN COUNTY, OHIO, Cont'd.

RESOLUTION NO. 585-95

June 13, 1995

REPORT (FIFTH) OF THE COUNTY ENGINEER AND ESTABLISHING SUMS FOR COMPENSATION AND DAMAGES FOR A PORTION OF THE OWNERS IN THE MATTER OF THE IMPROVEMENT OF LONG ROAD, COUNTY ROAD NO. 220, FROM THE CITY OF COLUMBUS CORPORATION LINE TO THE CITY OF PICKERINGTON CORPORATION LINE, MADISON TOWNSHIP, FRANKLIN COUNTY, OHIO (FRANKLIN COUNTY ENGINEER)

WHEREAS, on the 17th day of January, 1995, the Board of County Commissioners did by resolution duly adopted find in favor of improving a portion of Long Road, County Road No. 220, from the City of Columbus corporation line to the City of Pickerington corporation line, Madison Township, Franklin County, Ohio; and

WHEREAS, the Franklin County Engineer has negotiated with a portion of the property owners abutting Long Road, County Road No. 220, from the City of Columbus corporation line to the City of Pickerington corporation line, Madison Township, Franklin County, Ohio; and

WHEREAS, the Franklin County Engineer has advised this Board by letter dated June 7, 1995, that it is his recommendation that the following amounts of compensation and damages to be awarded to the owners of land sought to be appropriated; now, therefore, upon motion of Commissioner Teater, seconded by Commissioner Stokes.

<u>AUD.'S</u>	<u>ENGR'S</u>	<u>NAME</u>	<u>AMOUNT</u>
<u>PAR. NO.</u>	<u>PAR. NO.</u>		
471	12-WD,T	Steven M. & Gretchen M. Bechtel	\$ 155.00

BE IT RESOLVED, BY THE BOARD OF COUNTY COMMISSIONERS OF FRANKLIN COUNTY, OHIO:

Section 1) That after due consideration the amounts of compensation and damages as recommended by the Franklin County Engineer for the improvement of Long Road, County Road No. 220, from the City of Columbus corporation line to the City of Pickerington corporation line, Madison Township, Franklin County, Ohio, are just and equitable for the lands taken and damages sustained by reason of said road improvement are hereby approved.

Section 2) That the following purchase order is hereby approved for Steven M. and Gretchen M. Bechtel, \$155.00, purchase order 5P94777, and a copy is attached.

Voting Aye thereon: Arlene Shoemaker, Dorothy S. Teater and Dewey R. Stokes.

FRANKLIN COUNTY, OHIO
 OFFICE OF COUNTY ENGINEER
 ESTABLISHING, ALTERING AND WIDENING OF

LONG ROAD
 COUNTY ROAD No. 220
 MADISON TOWNSHIP

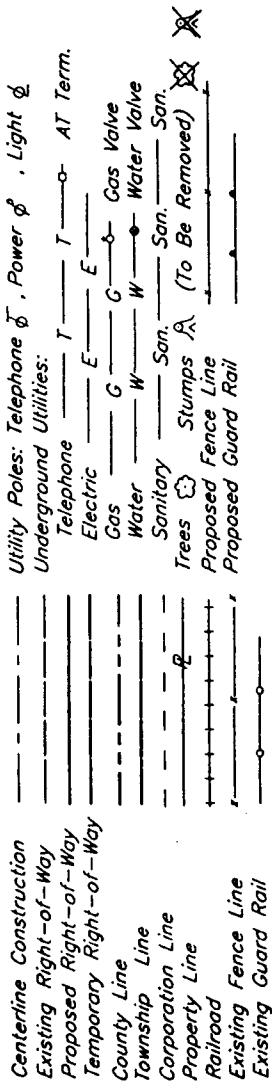
RIGHT OF WAY

PROJECT DESCRIPTION

Upgrading of 0.28 miles of Long Road by widening and resurfacing. This also includes new traffic control signs and pavement markings.

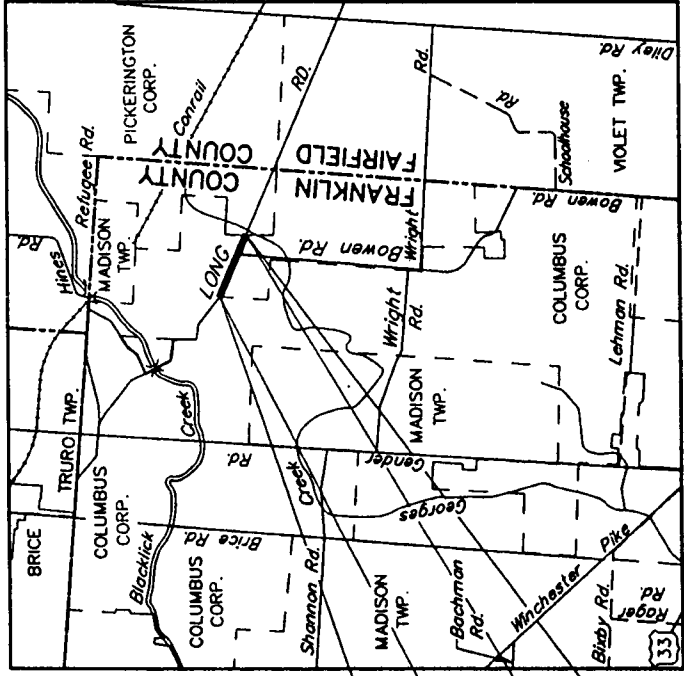
ACQUIRING AGENCY: FRANKLIN COUNTY

CONVENTIONAL SIGNS

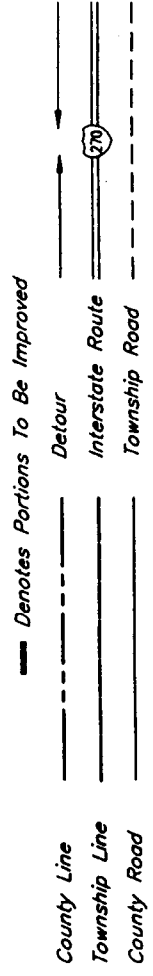


INDEX OF SHEETS

Title Sheet	1
Centerline Survey Plat	2
Property Map	3
Summary of Additional R/W	4
R/W Detail Sheets	5-8



LOCATION MAP
No Scale



SCALES



UNDERGROUND UTILITIES
 2 WORKING DAYS
BEFORE YOU DIG
 CALL TOLL FREE 800-362-2764
 OHIO UTILITIES PROTECTION SERVICE

Plan Prepared By:
 OFFICE OF THE
 FRANKLIN COUNTY ENGINEER
 970 DUBLIN ROAD
 COLUMBUS, OHIO 43215

TITLE SHEET

NONE

LONG ROAD
 FRA. CO. RD. NO. 220

1 / 8

29 / 36

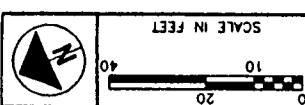
TOTAL NUMBER OF
 OWNERSHIPS
 TOTAL TAKES
 OWNERSHIPS WITH STRUCTURES INVOLVED
 OWNERSHIPS WITH "P" ITEMS

SUMMARY OF ADDITIONAL RIGHT OF WAY

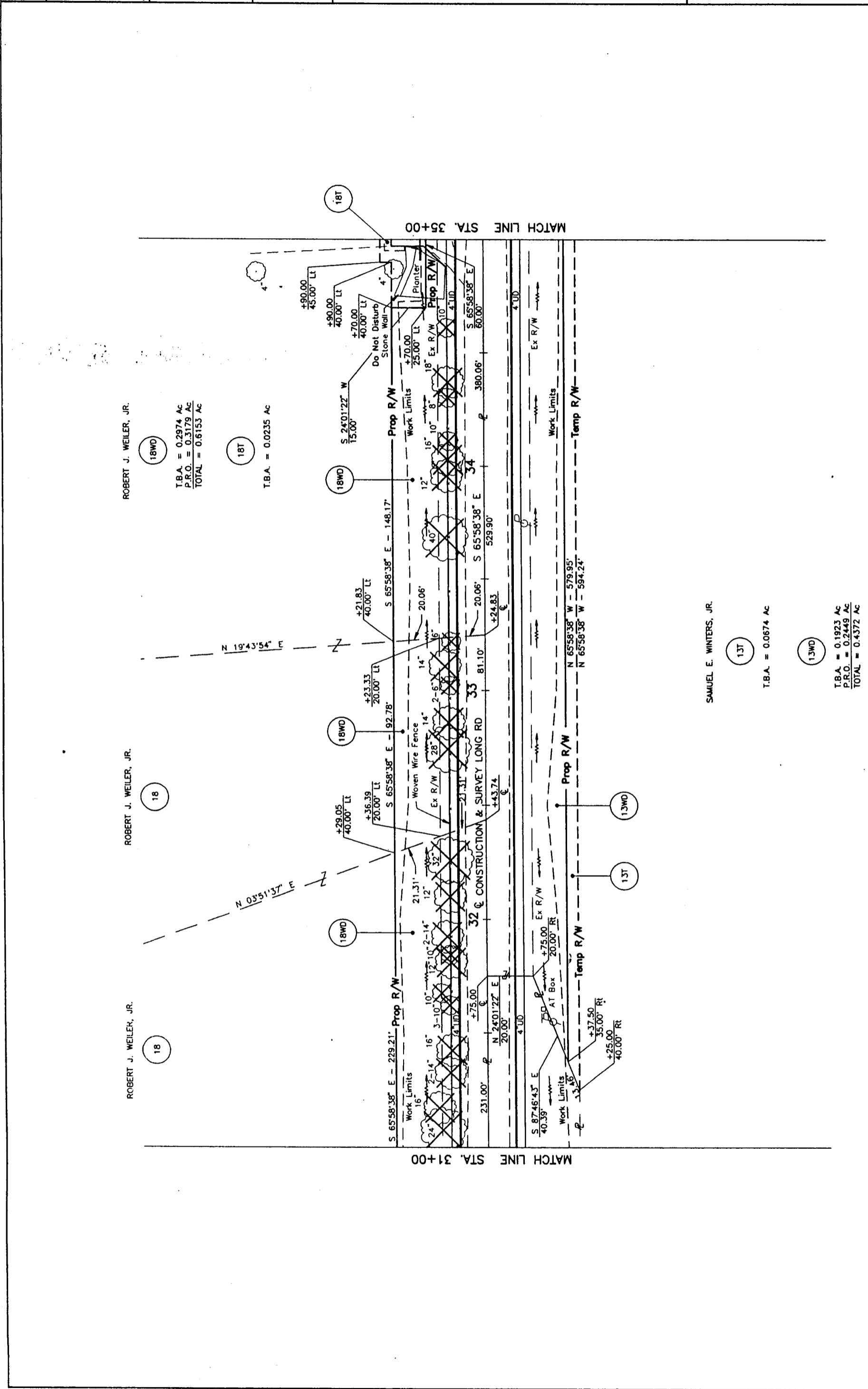
PARCEL No.	OWNER	SHEET No.	OWNER'S RECORD		AUDITOR'S PARCEL NO.	RECORD AREA	TOTAL P.R.O.	GROSS TAKE	P.R.O. IN TAKE	NET TAKE	STRUCTURE	NET RESIDUE		REMARKS AND PERSONALTY	AS ACQUIRED	
			BOOK	PAGE								LEFT	RIGHT		BOOK	PAGE
10	CONNIE H. VOGLER		OR 12459	C15	530-139377	1.418								NO RIGHT OF WAY REQUIRED		
11WD 11T 11T-1	CLAUDE L. PENNINGTON	5 5 6	OR 09374	E11	472 475	40.8996		0.2287 0.0239 0.0136	0.1282 -- --	0.1005 0.0239 0.0136		40.6709		GRADE DITCH GRADE DITCH		
12WD 12T	STEVEN M. & GRETCHEN M. BECHTEL	5 5	OR 07927	B17	471	1.00	0.0985	0.1326 0.0388	0.0985 --	0.0341 0.0388		0.8674		GRADE DITCH AND CONSTRUCT DRIVEWAY		
13WD 13T	SAMUEL E. WINTERS, JR.	7,8 7,8	OR 05732	E19	183-21	2.668	0.2449	0.4372 0.0674	0.2449 --	0.1923 0.0674		2.2308		GRADE DITCH		
14WD 14T	STEVE C. & DEBRA A. DELANEY	8 8	OR 08715	A09	187-17	3.318		0.0408 0.0050	0.0246 --	0.0162 0.0050		3.2772		GRADE DITCH		
15	COLUMBUS LAND INVESTMENT COMPANY		OR 02801	A04	530-193005	169.606								NO RIGHT OF WAY REQUIRED		
16T	CARDINAL TITLE HOLDING COMPANY	5	OR 16946	D04	530-166382	1.98		0.0332	--	0.0332		1.98		GRADE DITCH		
17WD 17T	ALUM CREEK FRANKLIN CORPORATION	5 5	3077	492	530-166391	16.531		0.3058 0.0079	0.1529 --	0.1529 0.0079		16.2252		GRADE DITCH		
18WD 18T	ROBERT J. WEILER, JR.	6-8 7,8	OR 10704	C18	530-191394 530-209892 530-223625			0.6153 0.0235	0.3179 --	0.2974 0.0235				GRADE DITCH AND CONSTRUCT DRIVEWAY		
19WD 19T	ROGER L. & SANDRA J. JONES	5,6 5,6	OR 07398	B04	530- 530-116547	2.530	0.1394	0.2789 0.0283	0.1394 --	0.1395 0.0283		2.2511		GRADE DITCH AND CONSTRUCT DRIVEWAY		
20WD	TERRY A. & MARY E. SWEANY	8	OR 01247	J01	187-12	6.932		0.0589	0.0278	0.0311		6.8731				

NOTE: PARCEL NUMBERS 1 THRU 9 WERE NOT USED ON THIS PROJECT.
 ALL TEMPORARY'S ARE SIX MONTH DURATIONS.

REV.	DATE	DESCRIPTION



REV.	DATE	DESCRIPTION
35		
36		



ROBERT J. WEILER, JR.

18WD
T.B.A. = 0.2974 Ac
P.R.O. = 0.3179 Ac
TOTAL = 0.6153 Ac

18T
T.B.A. = 0.0235 Ac

ROBERT J. WEILER, JR.

18
T.B.A. = 0.1923 Ac
P.R.O. = 0.2449 Ac
TOTAL = 0.4372 Ac

ROBERT J. WEILER, JR.

18
T.B.A. = 0.0674 Ac

SAMUEL E. WINTERS, JR.

13T
T.B.A. = 0.0674 Ac

13WD
T.B.A. = 0.1923 Ac
P.R.O. = 0.2449 Ac
TOTAL = 0.4372 Ac

