

Seventeenth Avenue - alteration establishing a new alignment north of the original alignment from the railroad west of Joyce Avenue to Cassady Avenue

April 2, 1964

Board of County Commissioners
Franklin County, Ohio.

Gentlemen:-

I hereby request that proceedings be initiated by the Board of County Commissioners for establishing, altering, widening, relocating and extending Seventeenth Avenue, Section "A", County Road No. 374, Mifflin Township and the City of Columbus, upon the following described centerline:

Beginning in the vicinity of the Pennsylvania Railroad (approximately 0.82 miles east of IR 71), thence in an easterly direction to end in the vicinity of Cassady Avenue. The total length of the road to be established, altered, widened, relocated and extended being approximately 2.08 miles. The improvement will consist of establishing, altering, widening, relocating and extending the right-of-way to variable widths being not less than 250 feet. The said Seventeenth Avenue is located in the Southwest Quarter, Range 17, Township 1, U.S. Military Lands, Mifflin Township and the City of Columbus.

I also recommend that the public convenience and welfare that all or any part thereof, of the herein described road be declared limited access in accordance with Section 5535.02 of the Revised Code of Ohio.

The City of Columbus will participate with Franklin County in the cost of the herein described Seventeenth Avenue improvement.

If the request for the above road improvement is deemed necessary by your Honorable Board, this Office will be prepared to view the proposed location with you at your convenience. Upon completion of the viewing, if so directed by your Board, we are of the opinion that a plat and report could be submitted to your Board on or before January 8th, 1965.

Yours truly,

Guy Elbin, P.E.
Franklin County Engineer

* * * * *

April 2, 1964

ESTABLISHING, ALTERING, WIDENING, RELOCATING, EXTENDING
AND DECLARING LIMITED ACCESS, SEVENTEENTH AVENUE, SECTION
"A", COUNTY ROAD NO. 374, MIFFLIN TOWNSHIP AND CITY OF
COLUMBUS - BY UNANIMOUS VOTE OF THE BOARD OF COUNTY COM-
MISSIONER OF FRANKLIN COUNTY, OHIO - VIEW: THURSDAY,
APRIL 23, 1964, AT 10:00 O'CLOCK A.M. HEARING: FRIDAY,
JANUARY 8TH, 1965, AT 10:00 O'CLOCK A.M.

Mr. Myers offered the following preamble and resolution and moved the adoption of the same, which motion was duly seconded by Mr. Koontz.

WHEREAS, Section 5553.04 of the Revised Code of Ohio, provides that when the Board of County Commissioners is of the opinion that it will be necessary for the public convenience and welfare to locate, establish, alter, widen, straighten, vacate or change the direction of a public road, it shall so declare by resolution; therefore

BE IT RESOLVED, by the Board of County Commissioners of Franklin County, Ohio, all of said Board being present and voting thereon and in favor thereof, that they do hereby declare that it is necessary for the public convenience and welfare that proceedings be had and taken to establish, alter, widen, relocate and extend Seventeenth Avenue, Section "A", County Road No. 374, Mifflin Township and the City of Columbus, to a width of not less than 250 feet upon the following described centerline:

Beginning in the vicinity of the Pennsylvania Railroad (approximately 0.82 miles east of IR 71), thence in an easterly direction to end in the vicinity of Cassady Avenue. The total length of the road to be established, altered, widened, relocated and extended being approximately 2.08 miles. The improvement to consist of establishing, altering, widening, relocating and extending the right-of-way to variable widths being not less than 250 feet. The said Seventeenth Avenue is located in the Southwest Quarter, Range 17, Township 1, U.S. Military Lands, Mifflin Township and the City of Columbus; and

BE IT FURTHER RESOLVED, by the Board of County Commissioners of Franklin County, Ohio, that they do hereby declare that it is necessary for the public convenience and welfare that all or any part thereof, of the herein described Seventeenth Avenue, Section "A", County Road No. 374, Mifflin Township and the City of Columbus be declared limited access as designated by the Board of County Commissioners; and

BE IT FURTHER RESOLVED, that Thursday, April 23, 1964, at 10:00 o'clock A.M., Eastern Standard Time, on the line of said proposed improvement be and the same is hereby fixed as the time and place for viewing same; and that Friday, January 8th, 1965, at 10:00 o'clock A.M., Eastern Standard Time, at the Office of the Board of County Commissioners of Franklin County, Ohio, be and hereby is fixed as the time and place for final hearing thereon, and that the Clerk of the Board of County Commissioners of Franklin County, Ohio, be and hereby is directed to cause legal publication thereof to be made in accordance with law; and

BE IT FURTHER RESOLVED, that the Board of County Commissioners, in accordance with Section 5557.02 of the Revised Code of Ohio, hereby requests that the City of Columbus grant unto the Board of County Commissioners consent to make that portion of the herein described improvement from a point in the vicinity of the Pennsylvania Railroad easterly to the City of Columbus Corporation Line, a distance of approximately 1.34 miles, which is within the corporate limits of the City of Columbus; and

BE IT FURTHER RESOLVED, that the Board of County Commissioners, in accordance with Section 5557.02 of the Revised Code of Ohio, hereby request that the City of Columbus participate in the cost of the herein described road improvement in such proportion as may be agreed upon between the City of Columbus and the Board of County Commissioners; and

BE IT FURTHER RESOLVED, that the Clerk of the Board of County Commissioners is hereby directed to file a copy of these proceedings with the Director of Public Service, Columbus, Ohio.

Voting Aye thereon: William M. Hicks, Glenn L. Myers and Henry A. Koontz.

I hereby certify that the foregoing is a true and correct copy of a Resolution duly adopted by the Board of County Commissioners of Franklin County, Ohio on the 2nd day of April, 1964.

Wm. J. Trayte, Clerk

HEER PTC. CO., COLS., O. CDS2506

Cont'd. - Seventeenth Ave., Sec. "A", Mifflin Twp. & the City of Columbus (Establishing, Altering, Widening, Relocating, Extending and declaring Limited Access.

April 28, 1964

ESTABLISHING, ALTERING, WIDENING, RELOCATING, EXTENDING AND DECLARING LIMITED ACCESS, SEVENTEENTH AVENUE, SECTION "A", COUNTY ROAD NO. 374, MIFFLIN TOWNSHIP AND THE CITY OF COLUMBUS - VIEWED: AND PUBLIC HEARING HELD IN ACCORDANCE WITH SECTION 128 OF THE FEDERAL AID HIGHWAY ACT OF 1956; ENGINEER TO FILE PLANS BY FRIDAY, JANUARY 8, 1965, AT 10:00 O'clock A.M.

In the matter of the resolution adopted April 2, 1964, by the Board of County Commissioners of Franklin County, Ohio, relative to establishing, altering, widening, relocating, extending and declaring limited access of Seventeenth Avenue, Section "A", County Road No. 374, Mifflin Township and the City of Columbus, Mr. Myers offered the following preamble and resolution and moved the adoption of the same, which motion was duly seconded by Mr. Koontz.

WHEREAS, on April 2, 1964 the Board of County Commissioners of Franklin County, Ohio, adopted a resolution declaring it necessary to establish, alter, widen, relocate, extend and declare limited access Seventeenth Avenue, Section "A", County Road No. 374, Mifflin Township and the City of Columbus; and

WHEREAS, on the 2nd day of April, 1964, said Board of County Commissioners did fix the 23rd day of April, 1964, at 10:00 o'clock A.M., on the line of said proposed improvement, as the time and place for the viewing thereof, and did further fix the 8th day of January, 1965, at 10:00 o'clock A.M. at the office of the Board of County Commissioners of Franklin County, Ohio, as the time and place for the final hearing on said improvement; and

WHEREAS, legal notice by publication in the Columbus Citizen Journal, a newspaper published in and of general circulation in said County, was given of the time and place for the viewing; and the time and place for hearing arguments for and against the proposed improvement; and of the final hearing thereon of said establishing, altering, widening, relocating, extending and declaring limited access; and

WHEREAS, the Board of County Commissioners of Franklin County, Ohio, did on the 23rd day of April, 1964, the day fixed for the viewing of the said proposed establishing, altering, widening, relocating, extending and declaring limited access, meet on the line thereof, as described in the resolution of April 2nd, 1964, and heard all the proof offered by parties interested in and affected thereby, and other persons competent to testify, and did go over and along the line of said proposed establishing, altering, widening, relocating, extending and declaring limited access and by actual view of same, and the premises along and adjacent thereto which are to be affected thereby; and

WHEREAS, in accordance with the requirements of Section 128 of the Federal Aid Highway Act of 1956, the Board of County Commissioners did, on the 23rd day of April, 1964, hold a public hearing for the purpose of hearing arguments for and against the proposed improvement; and

WHEREAS, the Board of County Commissioners of Franklin County, Ohio, does find that the establishing, altering, widening, relocating, extending and declaring limited access of Seventeenth Avenue, Section "A", County Road No. 374, Mifflin Township and the City of Columbus, is of sufficient importance to require that the Engineer of Franklin County, Ohio, be instructed and directed to make a survey and plat thereof; therefore

BE IT RESOLVED, by the Board of County Commissioners of Franklin County, Ohio, that the Engineer of Franklin County, Ohio, be and he hereby is, authorized and directed to make a plat and survey of the proposed establishing, altering, widening, relocating, extending and declaring limited access of Seventeenth Avenue, Section "A", County Road No. 374, Mifflin Township, and the City of Columbus, an accurate and detailed description of each tract of land which will be necessary to be taken, together with the names of each tract of land which will be necessary to be taken, together with the names of each owner; shall set stakes at the termini of each right-of-way line and at all angles between such termini, and at sufficient other points in the right-of-way line, so that the bounds of the proposed establishing, altering, widening, relocating, extending and declaring limited access may be discernible to property owners and others interested, and make a report to the Board of County Commissioners on or before 10:00 o'clock A.M., Friday, January 8, 1965; said report shall set forth the opinion of the County Engineer, either for or against the granting of said improvement, which report, together with the plat and survey of the proposed improvement be deposited with the County Commissioners; and

BE IT FURTHER RESOLVED, that the Clerk of the Board of County Commissioners is hereby directed to file a copy of these proceedings, together with a transcript of the public hearing, with the Director of Highways, State of Ohio, State Office Building, Columbus, Ohio.

Voting Aye thereon: William M. Hicks, Glenn L. Myers and Henry A. Koontz.

I hereby certify that the foregoing is a true and correct copy of a Resolution duly adopted by the Board of County Commissioners of Franklin County, Ohio, on the 28th day of April, 1964.

William J. Trayte, Clerk

* * * * *

June 2, 1964

Board of County Commissioners
Franklin County, Ohio

Re: Seventeenth Avenue, Section "A", County Road No. 374, Mifflin Township and the City of Columbus.

Gentlemen:

Pursuant to your resolution of April 28, 1964, I hereby request that your Honorable Board appoint Burgess and Niple, Consulting Engineers, 2015 West Fifth Avenue, Columbus 12, Ohio to assist the County Engineer in the performance of work necessary for developing Preliminary Engineering plans for the improvement of Seventeenth Avenue, Section "A", County Road No. 374, Mifflin Township and the City of Columbus, from the vicinity of the Pennsylvania Railroad easterly to end in the vicinity of Cassidy Avenue.

We are submitting for your approval an engineering agreement between Franklin County and Burgess and Niple for the performance of the herein said work.

If the Contract meets with your approval, I respectfully recommend the appointment of this engineering firm.

Yours truly,

Guy Elbin, P.E.
County Engineer

* * * * *

Cont'd. - Seventeenth Ave., Sec. "A", Mifflin Twp. & City of Cols. (Establishing, Altering, Widening Relocating, Extending and Declaring Limited Access.

June 11, 1964

BURGESS AND NIPLE, CONSULTING ENGINEERS, APPOINTED TO ASSIST COUNTY ENGINEER IN THE PERFORMANCE OF WORK NECESSARY FOR DEVELOPING PRELIMINARY ENGINEERING PLANS FOR THE IMPROVEMENT OF SEVENTEENTH AVENUE, SECTION "A", COUNTY ROAD NO. 374, MIFFLIN TOWNSHIP AND THE CITY OF COLUMBUS.

Mr. Myers offered the following preamble and resolution and moved the adoption of the same, which motion was duly seconded by Mr. Koontz.

WHEREAS, the Franklin County Engineer, Guy Elbin, has requested the appointment of Burgess and Niple, Consulting Engineers, 2015 West Fifth Avenue, Columbus 12, Ohio, to assist the County Engineer in the performance of work necessary for developing preliminary engineering plans for the improvement of Seventeenth Avenue, Section "A", County Road No. 374, Mifflin Township and the City of Columbus, from the vicinity of the Pennsylvania Railroad easterly to end in the vicinity of Cassady Avenue; and

WHEREAS, the said Burgess and Niple, Consulting Engineers, have submitted an engineering agreement for assisting the County Engineer in the herein said work, now therefore

BE IT RESOLVED, by the Board of County Commissioners of Franklin County, Ohio, that Burgess and Niple Consulting Engineers, 2015 West Fifth Avenue, Columbus 12, Ohio, be and they hereby are employed to assist the Franklin County Engineer in the performance of work necessary for the aforesaid improvement and all other engineering services as set forth in the agreement submitted by them; and

BE IT FURTHER RESOLVED, that the engineering agreement between Franklin County, Ohio and Burgess and Niple, Consulting Engineers, 2015 West Fifty Avenue, Columbus 12, Ohio, for engineering services for the performance of work necessary for developing preliminary engineering plans for the improvement of Seventeenth Avenue, Section "A", County Road No. 374, Mifflin Township and the City of Columbus, from the vicinity of the Pennsylvania Railroad easterly to end in the vicinity of Cassady Avenue as submitted by Burgess and Niple, Consulting Engineers, is hereby approved and accepted and its execution authorized by this Board.

Voting Aye thereon: William M. Hicks, Glenn L. Myers and Henry A. Koontz.

June 11, 1966

CITY OF COLUMBUS RESOLUTION NO. 127X64 FOR COOPERATION IN THE COST OF PRELIMINARY ENGINEERING FOR THE IMPROVEMENT OF 17TH AVENUE (COUNTY ROAD NO. 374) APPROVED AND ACCEPTED.

On motion of Mr. Myers, seconded by Mr. Koontz, the resolution No. 127X64 passed by the City of Columbus, May 25, 1964 expressing the intent of the City of Columbus to cooperate with the Board of County Commissioners of Franklin County, Ohio, by assuming 50% of the cash of preliminary engineering, said 50% includes all engineering and testing of soils, in the amount of \$78,500.00 for the preparation of preliminary engineering plans for the improvement of 17th Avenue (County Road No. 374) beginning in the vicinity of the Pennsylvania Railroad (approximately 0.82 miles east of I.R. 71) and ending in the vicinity of Cassady Avenue (approximately 2.92 miles east of I.R. 71) is hereby approved and accepted.

Voting Aye thereon: William M. Hicks, Glenn L. Myers and Henry A. Koontz.

January 8, 1965

Board of County Commissioners
Court House
Columbus, Ohio 43215

SUBJECT PROJECT: ESTABLISHING, ALTERING, WIDENING, RELOCATING, EXTENDING AND DECLARING LIMITED ACCESS, SEVENTEENTH AVENUE, SECTION "A", COUNTY ROAD NO. 374, MIFFLIN TOWNSHIP AND THE CITY OF COLUMBUS.

Gentlemen:

Due to the amount of work involved, I hereby request that the hearing relative to the subject project be postponed to 10:00 o'clock A.M., Friday, July 16, 1965.

Very truly yours,

Guy Elbin, P.E.
Franklin County Engineer

January 8, 1965

HEARING SCHEDULED JANUARY 8, 1965, FOR ESTABLISHING, ALTERING, WIDENING, RELOCATING, EXTENDING AND DECLARING LIMITED ACCESS, SEVENTEENTH AVENUE, SECTION "A", COUNTY ROAD NO. 374, MIFFLIN TOWNSHIP AND THE CITY OF COLUMBUS, POSTPONED TO 10:00 O'CLOCK A.M., FRIDAY, JULY 16, 1965.

On motion of Mr. Koontz, seconded by Mr. Myers, the hearing scheduled for January 8, 1965, relative to establishing, altering, widening, relocating, extending and declaring limited access, Seventeenth Avenue, Section "A", County Road No. 374, Mifflin Township and the City of Columbus, be and it hereby is postponed to 10:00 O'clock A.M., Friday, July 16, 1965, at the request of Franklin County Engineer.

Voting Aye thereon: Glenn L. Myers and Henry A. KOONTZ.

Absent and not voting: William M. Hicks.

HEER PYG. CO., COLS., O. CDE2508
 Cont'd. - Seventeenth Ave., Sec. "A", Mifflin Twp. & the City of Col. (Establishing, Altering, Widening, Relocating, Extending and declaring Limited Access.

July 15, 1965

Board of County Commissioners
 Franklin County, Ohio

SUBJECT PROJECT: ESTABLISHING, ALTERING, WIDENING, RELOCATING EXTENDING AND DECLARING LIMITED ACCESS, SEVENTEENTH AVE., SEC. "A" COUNTY RD. NO. 374, MIFFLIN TWP. & CITY OF COLS.

Gentlemen:

Due to the amount of work involved, I hereby request that the hearing relative to the subject project be further postponed to 10:00 o'clock A.M., Friday, October 15, 1965.

Yours truly,

Guy Elbin, P.E.
 Franklin County Engineer

* * * * *

July 15, 1965

HEARING SCHEDULED JULY 16, 1965, FOR ESTABLISHING, ALTERING, WIDENING, RELOCATING, EXTENDING AND DECLARING LIMITED ACCESS, SEVENTEENTH AVENUE, SECTION "A", COUNTY ROAD NO. 274, MIFFLIN TOWNSHIP AND THE CITY OF COLUMBUS, FURTHER POSTPONED TO 10:00 O'CLOCK A.M., FRIDAY, OCTOBER 15, 1965.

On motion of Mr. Koontz, seconded by Mr. Myers, the hearing scheduled for July 16, 1965, relative to establishing, altering, widening, relocating, extending and declaring limited access, Seventeenth Avenue, Section "A", County Road No. 374, Mifflin Township and the City of Columbus, be and it hereby is further postponed to 10:00 o'clock A.M., Friday, October 15, 1965, at the request of Franklin County Engineer.

Voting Aye thereon: Glenn L. Myers and Henry A. Koontz.

Absent and not voting: William M. Hicks.

* * * * *

October 15, 1965

Board of County Commissioners
 Franklin County, Ohio

SUBJECT PROJECT: ESTABLISHING, ALTERING, WIDENING, RELOCATING EXTENDING AND DECLARING LIMITED ACCESS, SEVENTEENTH AVENUE, SEC. "A" COUNTY RD. NO. 374, MIFFLIN TOWNSHIP AND THE CITY OF COLUMBUS.

Gentlemen:-

Due to the amount of work involved, I hereby request that the hearing relative to the the subject project, scheduled for this day, October 15, 1965, be further postponed to 10:00 o'clock A.M., Tuesday, February 1, 1966.

Yours truly,

Guy Elbin, P.E.
 Franklin County Engineer

* * * * *

October 15, 1965

HEARING SCHEDULED OCTOBER 15, 1965, FOR ESTABLISHING, ALTERING, WIDENING, RELOCATING, EXTENDING AND DECLARING LIMITED ACCESS, SEVENTEENTH AVENUE, SECTION "A", COUNTY ROAD NO. 374, MIFFLIN TOWNSHIP AND THE CITY OF COLUMBUS, FURTHER POSTPONED TO 10:00 O'CLOCK A.M., TUESDAY, FEBRUARY 1, 1966.

On motion of Mr. Koontz, seconded by Mr. Southwick, the hearing scheduled for October 15, 1965, relative to establishing, altering, widening, relocating, extending and declaring limited access, Seventeenth Avenue, Section "A", County Road No. 374, Mifflin Township and the City of Columbus, be and it hereby is further postponed to 10:00 o'clock A.M., Tuesday, February 1, 1966, at the request of the Franklin County Engineer.

Voting Aye thereon: Glenn L. Myers, Henry A. Koontz and Robert T. Southwick.

* * * * *

February 1, 1966

Board of County Commissioners
 Franklin County, Ohio

SUBJECT PROJECT: ESTABLISHING, ALTERING, WIDENING, RELOCATING, EXTENDING AND DECLARING LIMITED ACCESS, SEVENTEENTH AVE., SEC. "A", CO. RD. NO. 374, MIFFLIN TOWNSHIP AND THE CITY OF COLUMBUS

Gentlemen:-

Due to the amount of work involved, I hereby request that the hearing relative to the subject project, scheduled for this day, February 1, 1966, be further continued to 10:00 o'clock A.M., Tuesday, May 3, 1966.

Yours truly,

Guy Elbin, P.E.
 Franklin County Engineer

* * * * *

Franklin County, Ohio ROAD RECORD No. 20

HEER PTC. CO., COLS., O. CDS2506

Cont'd. - Seventeenth ave., Sec. "A", Mifflin Twp. & the City of Cols. (Establishing, Altering, Widening, relocating, Extending and Declaring Limited Access.

February 1, 1966

HEARING SCHEDULED FEBRUARY 1, 1966, FOR ESTABLISHING, ALTERING, WIDENING, RELOCATING EXTENDING AND DECLARING LIMITED ACCESS, SEVENTEENTH AVENUE, SECTION "A", COUNTY ROAD NO. 374, MIFFLIN TOWNSHIP AND THE CITY OF COLUMBUS, FURTHER CONTINUED TO 10:00 O'CLOCK A.M., TUESDAY, MAY 3, 1966.

On motion of Mr. Southwick, seconded by Mr. Koontz, the hearing scheduled for February 1, 1966, relative to establishing, altering, widening, relocating, extending and declaring limited access, seventeenth avenue, section 'a', county road no. 374, MIFFLIN TOWNSHIP and the City of Columbus, be and it hereby is further continued to 10:00 o'clock A.M., Tuesday, May 3, 1966, at the request of the Franklin County Engineer.

Voting Aye thereon: Henry A. Koontz and Robert T. Southwick.

Absent and not voting: Glenn L. Myers.

* * * * *

May 3, 1966

Board of County Commissioners
Franklin County, Ohio

SUBJECT PROJECT: ESTABLISHING, ALTERING WIDENING, RELOCATING, EXTENDING AND DECLARING, LIMITED ACCESS, SEVENTEENTH AVENUE, SECTION "A", COUNTY ROAD NO. 374, MIFFLIN TOWNSHIP AND THE CITY OF COLUMBUS.

Gentlemen:-

Due to the amount of work involved, I hereby request that the hearing relative to the subject project, scheduled for this day, May 3, 1966, be further continued to 10:00 o'clock A.M., Friday August 12, 1966.

Yours truly,

Guy Elbin, P.E.
Franklin County Engineer

* * * * *

May 3, 1966

HEARING SCHEDULED MAY 3, 1966, FOR ESTABLISHING, ALTERING, WIDENING, RELOCATING, EXTENDING AND DECLARING LIMITED ACCESS, SEVENTEENTH AVENUE, SECTION "A", COUNTY ROAD NO. 374, MIFFLIN TOWNSHIP AND THE CITY OF COLUMBUS, FURTHER CONTINUED TO 10:00 O'clock A.M., FRIDAY, AUGUST 12, 1966.

On motion of Mr. Myers, seconded by Mr. Southwick, the hearing scheduled for May 3, 1966, relative to establishing, altering, widening, relocating, extending and declaring limited access, Seventeenth Avenue, Section "A", County Road No. 374, Mifflin Township and the City of Columbus, be and it hereby is further continued to 10:00 o'clock A.M., Friday, August 12, 1966, at the request of the Franklin Co. Engineer.

Voting Aye thereon: Henry A. Koontz, Glenn L. Myers and Robert T. Southwick.

* * * * *

August 12, 1966

Board of County Commissioners
Franklin County, Ohio.

SUBJECT PROJECT: ESTABLISHING, ALTERING, WIDENING, RELOCATING, EXTENDING AND DECLARING LIMITED ACCESS, SEVENTEENTH AVENUE, SECTION "A", COUNTY ROAD NO. 374, MIFFLIN TOWNSHIP AND THE CITY OF COLUMBUS.

Gentlemen:-

Due to the amount of work involved, I hereby request that the hearing relative to the subject project, scheduled for this day, August 12, 1966, be further continued to 10:00 o'clock A.M., Friday, October 14, 1966.

Yours truly,

Guy Elbin, P.E.
Franklin County Engineer

* * * * *

August 12, 1966

HEARING SCHEDULED AUGUST 12, 1966, FOR ESTABLISHING, ALTERING, WIDENING, RELOCATING, EXTENDING AND DECLARING LIMITED ACCESS, SEVENTEENTH AVENUE, SECTION "A", COUNTY ROAD NO. 374, MIFFLIN TOWNSHIP AND THE CITY OF COLUMBUS, FURTHER CONTINUED TO 10:00 O'CLOCK A.M., FRIDAY, OCTOBER 14, 1966.

On motion of Mr. Southwick, seconded by Mr. Myers, the hearing scheduled for August 12, 1966, relative to establishing, altering, widening, relocating, extending and declaring limited access Seventeenth Avenue, Section "A", County Road No. 374, Mifflin Township, and the City of Columbus, be and it hereby is further continued to 10:00 o'clock A.M., Friday, October 14, 1966, at the request of the Franklin County Engineer.

Voting Aye thereon: Glenn L. Myers and Robert T. Southwick.

Absent and not voting: Henry A. Koontz.

* * * * *

Cont'd. - Seventeenth Ave., Sec. "A", Mifflin Twp. & the City of Col. (Establishing, Altering, Widening, Relocating, Extending and Declaring Limited Access.

October 14, 1966

Board of County Commissioners
Franklin County, Ohio

Gentlemen:-

Pursuant to your resolution of April 28, 1964, I have made a survey, plat and description of lands, and set stakes at the termini of each right-of-way line and at all angles between such termini and at sufficient other points, so that the bounds may be discernible to the property owners and other interested, which I hereby submit for establishing, altering, widening, relocating, extending and declaring limited access, Seventeenth Avenue, Section "A", County Road No. 374, Mifflin Township and the City of Columbus along the following described centerline:

Beginning for a reference at a point in the centerline of existing Seventeenth Ave. at the east right of way line of the Pennsylvania Railroad. thence north $14^{\circ} 26' 53''$ east along the railroad east right of way line a distance of 116.98 feet to a point:

Thence south $84^{\circ} 10' 45''$ west a distance of 410.72 feet to a point which is Station 49 + 29.46 of proposed Seventeenth Avenue and the beginning point of this description.

Beginning at said Station 49 + 29.46, thence north $84^{\circ} 10' 45''$ east a distance of 478.00 feet to Station 54 + 07.46 which is the PC of a $1^{\circ} 28' 00''$ curve, crossing the east right of way line of the Pennsylvania Railroad at Station 53 + 40.18;

Thence on a curve to the right having a radius of 3,906.53 feet, an arc distance of 681.69 feet to Station 60 + 89.15;

Thence South $85^{\circ} 49' 22''$ east a distance of 4,218.23 feet to Station 103 + 07.38 which is the PC of a $1^{\circ} 28' 00''$ curve, passing the centerline of Joyce Avenue at Station 64 + 03.66 and the centerline of Woodland Avenue at Station 94 + 34.00;

Thence on a curve to the right having a radius of 3,906.53 feet, an arc distance of 5557.10 feet to Station 108 + 64.48;

Thence south $77^{\circ} 39' 07''$ east a distance of 566.52 feet to Station 114 + 31.00 which is the PC of a $1^{\circ} 28' 00''$ curve, crossing the centerline of Brentnell Avenue at Station 109 + 05.64;

Thence on a curve to the left having a radius of 3,906.53 feet, an arc distance of 722.56 feet to Station 121 + 53.56;

Thence south $88^{\circ} 14' 58''$ east a distance of 2,086.53 feet to Station 142 + 40.09, passing the centerline of Sunbury Road at Station 136 + 28.38;

Thence South $1^{\circ} 45' 02''$ west a distance of 25.00 feet to a point also being Station 142 + 40.09;

Thence south $88^{\circ} 14' 58''$ east a distance of 326.51 feet to Station 145 + 66.60 which is the PC of a $2^{\circ} 00' 00''$ curve;

Thence on a curve to the right having a radius of 2,864.79 feet, an arc distance of 435.65 feet to Station 150 + 02.25;

Thence south $79^{\circ} 32' 11''$ east a distance of 351.00 feet to Station 153 + 53.25 which is the PC of a $3^{\circ} 00' 00''$ curve;

Thence on a curve to the left having a radius of 1,909.86 feet, an arc distance of 222.62 feet to Station 155 + 75.87;

Thence south $86^{\circ} 12' 54''$ east a distance of 570.95 feet to Station 161 + 46.82;

Thence north $3^{\circ} 47' 06''$ east a distance of 2.50 feet to a point also being Station 161 + 46.82;

Thence south $86^{\circ} 12' 54''$ east a distance of 153.31 feet to Station 163 + 00.13 and there terminating, passing the centerline of Cassady Ave. at Station 162 + 98.91.

The Road Stations herein referred to are shown on the Seventeenth Avenue right-of-way Plat on file in the Office of the Franklin County Engineer, Columbus, Ohio.

The total length of the road to be established, altered, widened, relocated, extended and declared limited access being 11,370.67 feet or 2.153 miles. The right-of-way to be established, altered, widened, relocated, extended and declared limited access to the various widths and locations as shown on the submitted plat, being not less than 240 feet.

It is my recommendation that Seventeenth Avenue, Section "A", County Road No. 374, as herein described be established, altered, widened, relocated, extended and declared limited access to the various widths and locations, being not less than 240 feet, as shown on the submitted plat.

Respectfully submitted,

Guy Elbin, P.E.
Franklin County Engineer

* * * * *

ESTABLISHING , ALTERING , WIDENING RELOCATING AND EXTENDING SEVENTEENTH AVENUE SECTION "A"

COUNTY ROAD NO 374
MIFFLIN TOWNSHIP
AND
CITY OF COLUMBUS
FRANKLIN COUNTY , OHIO

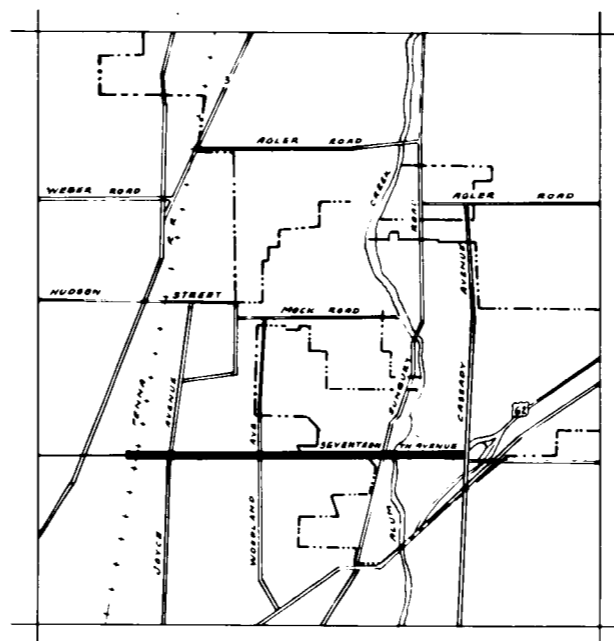
*Right-of-Way not acquired
as of August 28, 1967.*

"LIMITED ACCESS"

This improvement has been designated a limited access highway or freeway including service highways or drives by action of the Board of County Commissioners in accordance with Sections 5535.02 and 5535.03 of the Revised Code of Ohio.

CONVENTIONAL SIGNS

Centerline	---
Corporation Line	---
Existing Right-of-Way	---
Proposed Right-of-Way	--- R/W ---
Property Line	---
Fence Line	--- x ---
Water Lines	--- W ---
Gas Lines	--- G ---
Existing Sanitary Sewers	--- S.S. ---
Existing Storm Sewers	--- S.S. ---
Telephone Conduit	--- T.C. ---
Telephone Poles	○
Combined Poles	○
Power Poles	○



VICINITY MAP

— Denotes Location

APPROVED *Walter E. McSherron*
DATE 10-14-66 FRANKLIN COUNTY DEPUTY ENGINEER

APPROVED *Gay E. Elbin*
DATE 10-14-66 FRANKLIN COUNTY ENGINEER

APPROVED _____
DATE _____ CHIEF ENGINEER, DIVISION OF ENGINEERING AND CONSTRUCTION
CITY OF COLUMBUS

APPROVED _____
DATE _____ DIRECTOR OF PUBLIC SERVICE, CITY OF COLUMBUS

Henry G. Kooty
Robert J. Fink

APPROVED *Sherrill R. Vesper*
DATE 10-14-66 BOARD OF FRANKLIN COUNTY COMMISSIONERS

R.R. 36 - Pgs. 127 - 133

THIS IMPROVEMENT HAS BEEN DECLARED
A LIMITED ACCESS HIGHWAY FROM STATION

OF THE DIRECTOR OF HIGHWAYS AND RECORDED
IN VOLUME , PAGE , OF THE DIRECTOR'S
JOURNAL, PURSUANT TO LAW.

CENTERLINE PLAT

COUNTY ROAD NO. 374 SECTION A

FRANKLIN COUNTY, OHIO

CITY OF COLUMBUS - MIFFLIN TOWNSHIP

RANGE 17, TWP. 1, QTR. - TWP. 3 AND RANGE 18, TWP. 1, QTR. - TWP. 4

UNITED STATES MILITARY LANDS

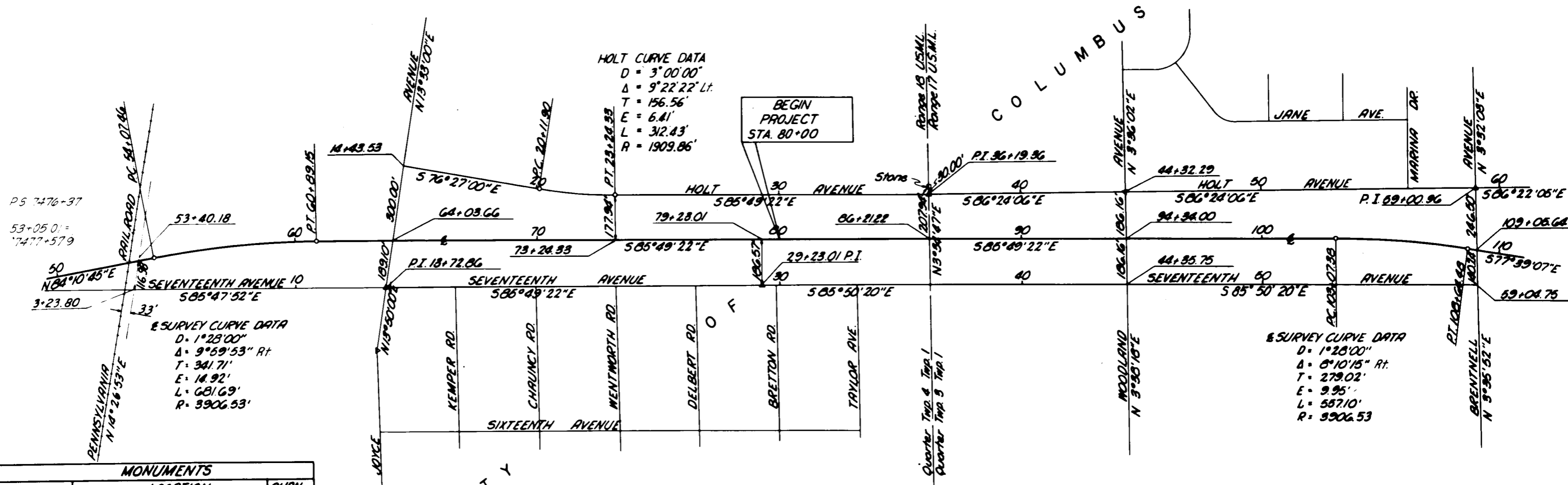
0 200 400 600

SCALE IN FEET

Received _____ 19____
Recorded _____ 19____
Book _____ Page _____
County Recorder

FRANKLIN COUNTY
ROAD NO. 374 SEC. A

1/15



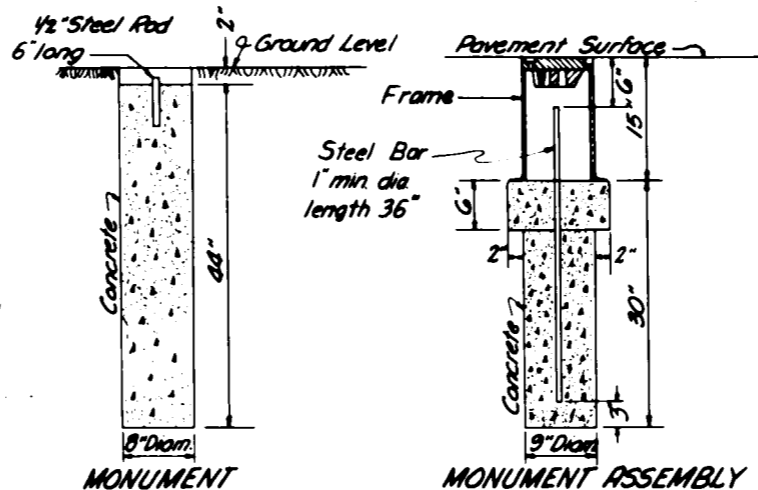
PS 7476+37
53+05.01 =
7477+57.9

§ SURVEY CURVE DATA
D = 1°23'00"
Δ = 9°59'53" Rt.
T = 341.71'
E = 14.92'
L = 681.69'
R = 3906.53'

HOLT CURVE DATA
D = 3°00'00"
Δ = 9°22'22" Lt.
T = 156.56'
E = 6.41'
L = 312.43'
R = 1909.86'

§ SURVEY CURVE DATA
D = 1°23'00"
Δ = 8°10'15" Rt.
T = 279.02'
E = 9.95'
L = 587.10'
R = 3906.53'

MONUMENTS		
SURVEY	LOCATION	QUAN.
E	86+19.36 on E	1
	PC 103+07.38 on E	1
MONUMENT ASSEMBLIES		
SURVEY	LOCATION	QUAN.
HOLT AVE	18+83.53 on E @ JOYCE AVE	1
	PC 20+11.90 on E	1
	PT 23+24.33 on E	1
	PT 36+19.36 on E @ Range Line	1
17th AVE.	44+32.29 on E @ WOODLAND	1
	PT 13+72.86 on E @ JOYCE	1
	PT 29+23.01 on E	1
	44+35.75 on E @ WOODLAND	1



MONUMENTS WILL BE SET
BY CONTRACTOR DURING
CONSTRUCTION OF HIGHWAY.

I HEREBY CERTIFY THAT THIS PLAT
IS A TRUE DELINEATION OF A SURVEY
MADE FOR THE FRANKLIN COUNTY
ENGINEER IN 1965 BY BURGESS AND
NIPLE, LIMITED.
Burgess and Niple DATE October 7, 1966

THIS IMPROVEMENT HAS BEEN DECLARED
A LIMITED ACCESS HIGHWAY FROM STATION

OF THE DIRECTOR OF HIGHWAYS AND RECORDED
IN VOLUME , PAGE , OF THE DIRECTOR'S
JOURNAL, PURSUANT TO LAW.

CENTERLINE PLAT

COUNTY ROAD NO. 374 SECTION A

FRANKLIN COUNTY, OHIO

CITY OF COLUMBUS - MIFFLIN TOWNSHIP

RANGE 17, TWP. 1, QTR. - TWP. 3 AND RANGE 18, TWP. 1, QTR. - TWP. 4

UNITED STATES MILITARY LANDS

0 200 400 600

SCALE IN FEET



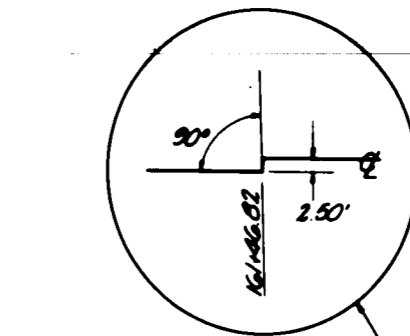
MIFFLIN TOWNSHIP

§ SURVEY CURVE DATA

D = 1°28'00"
Δ = 10°35'51" Lt.
T = 362.31'
E = 16.76'
L = 722.66'
R = 3906.53

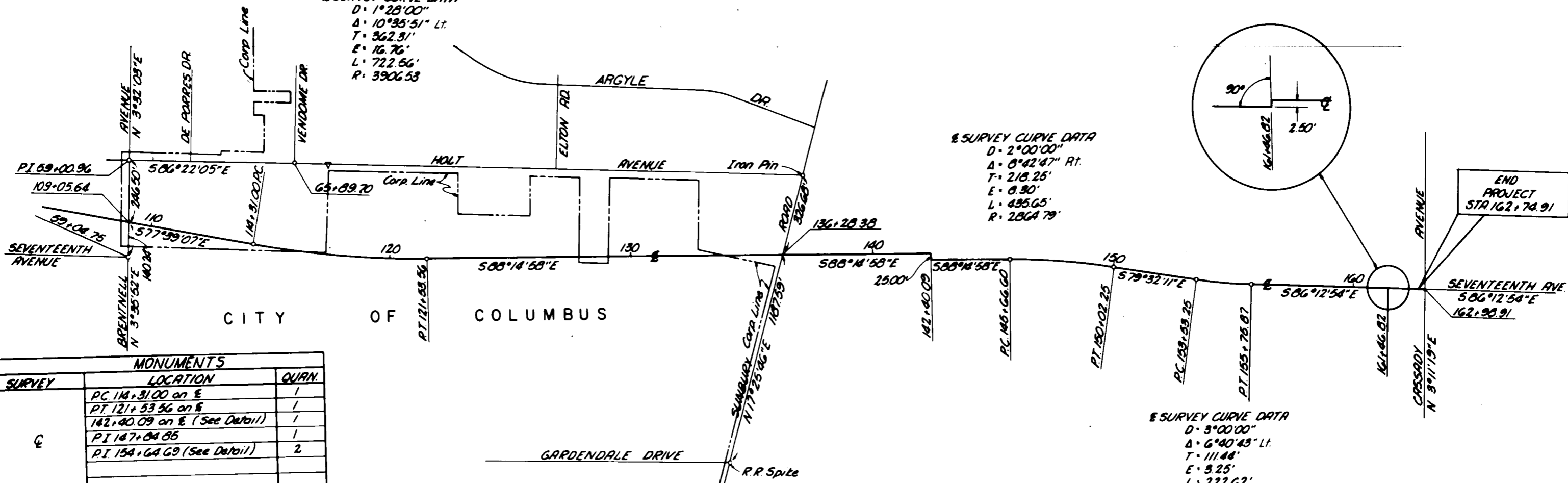
§ SURVEY CURVE DATA

D = 2°00'00"
Δ = 8°42'47" Rt.
T = 218.25'
E = 8.90'
L = 435.65'
R = 2864.79'

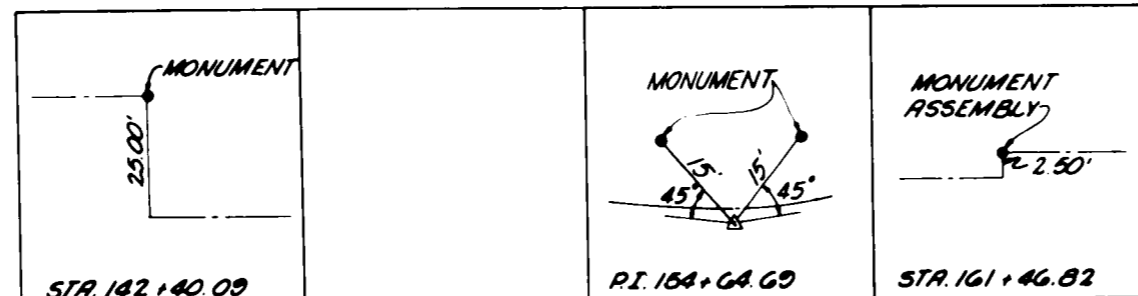


§ SURVEY CURVE DATA

D = 3°00'00"
Δ = 6°40'43" Lt.
T = 111.48'
E = 3.25'
L = 222.62'
R = 1909.86'



MONUMENTS		
SURVEY	LOCATION	QUAN.
E	PC 114+31.00 on E	1
	PT 121+53.56 on E	1
	142+40.09 on E (See Detail)	1
	PI 147+04.85	1
	PI 154+64.69 (See Detail)	2
MONUMENT ASSEMBLIES		
SURVEY	LOCATION	QUAN.
E	161+46.82 on E (See Detail)	1
HOLT AVE.	PI 59+00.96 on E @ BRENT 65+09.70 on E @ VENDOME	1 1
17 TH AVE.	59+04.75 on E @ BRENTNELL	1



MONUMENTS WILL BE SET
BY CONTRACTOR DURING
CONSTRUCTION OF HIGHWAY

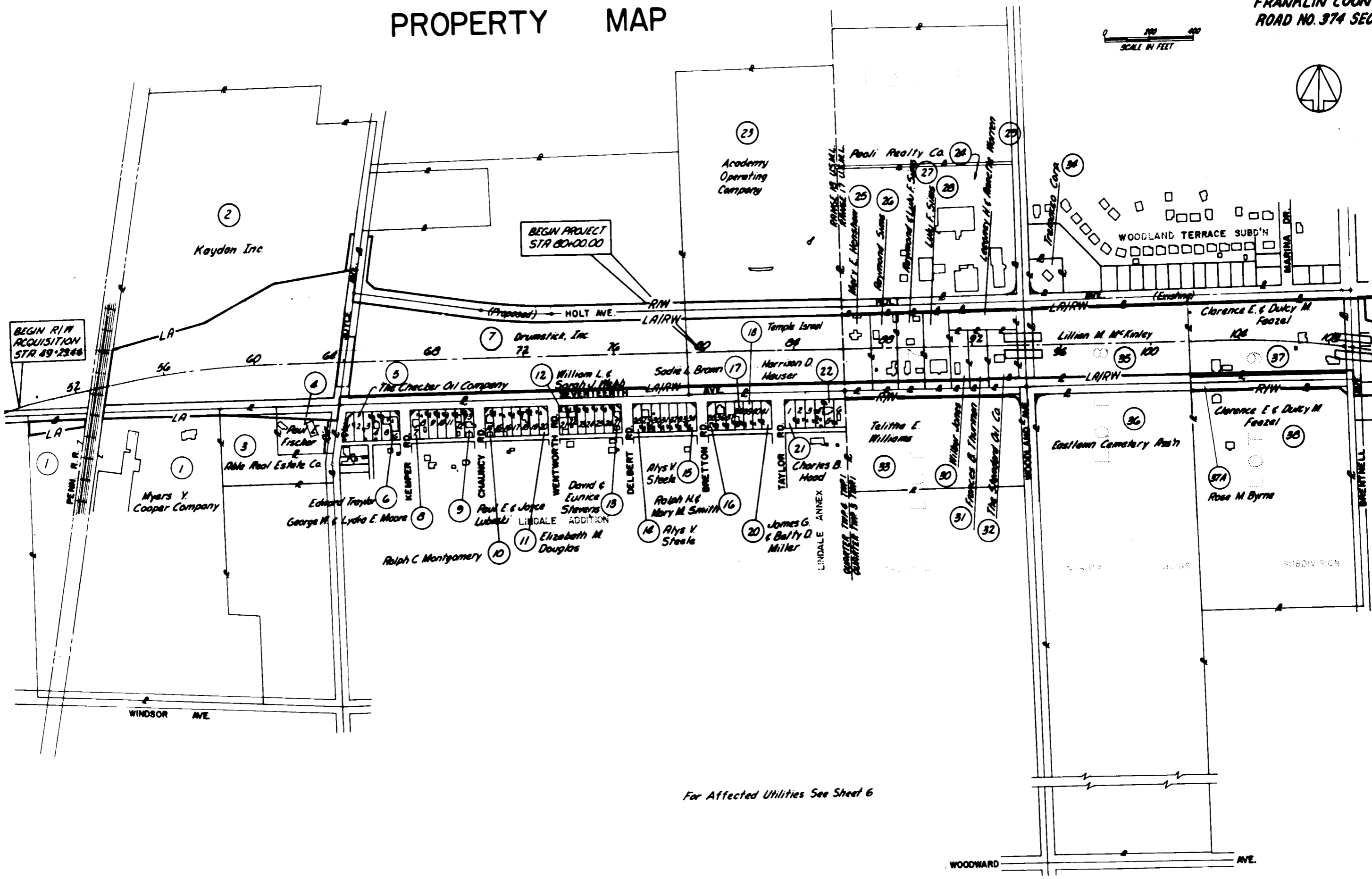
PROPERTY MAP

SU 1474(1)

FRANKLIN COUNTY
ROAD NO. 374 SEC. A

SCALE IN FEET
0 100 200

3
15



For Affected Utilities See Sheet 6

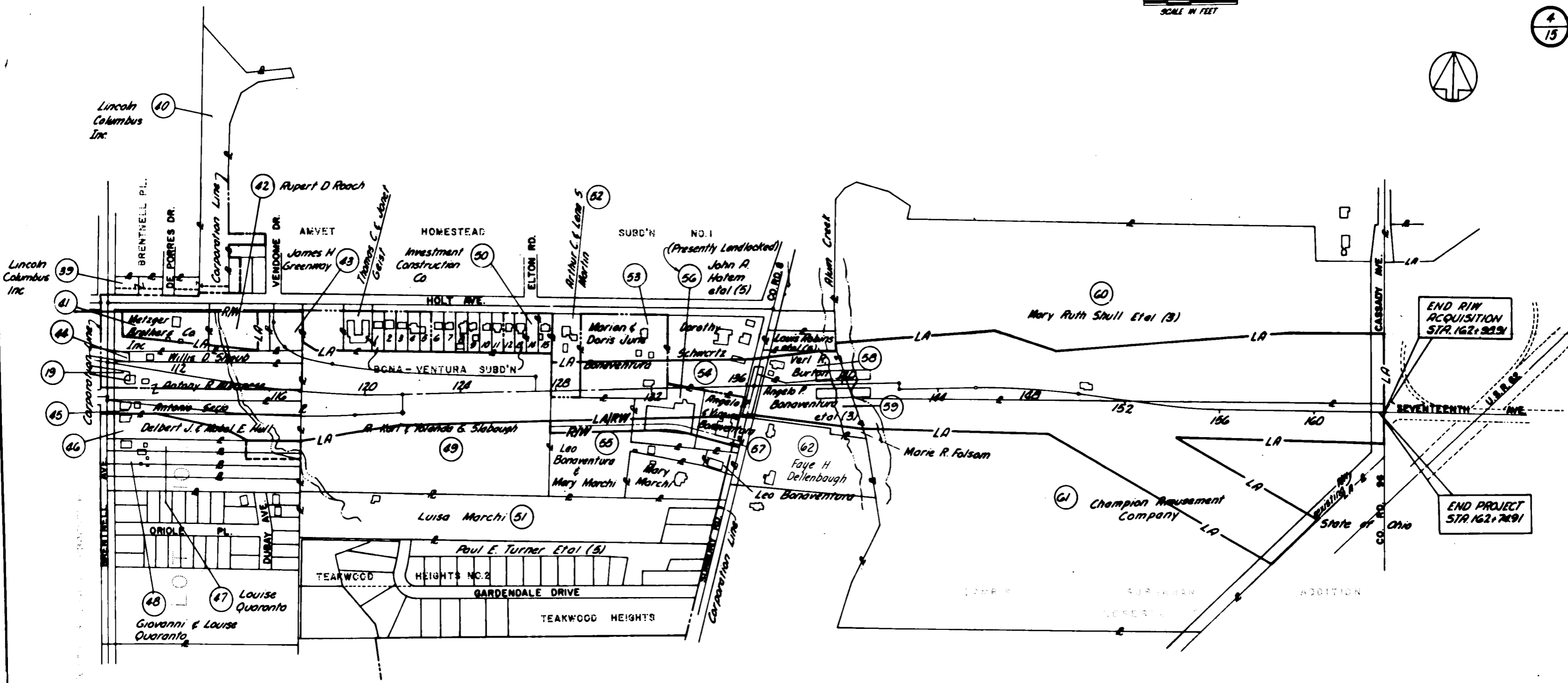
PROPERTY MAP

SU 1474(1)

FRANKLIN COUNTY
ROAD NO. 374 SEC. A

0 200 400
SCALE IN FEET

4
15



For Affected Utilities See Sheet 6

PROPERTY MAP

Total No. of Owners 61
 Total No. of Owners with Structures 17

COMPLETION OF <u>Oct. 11, 1966</u>		
REV.	DATE	DESCRIPTION
1	3-6-67	Revised Parcel 23-T, added Parcel 34-T

FRANKLIN COUNTY
 ROAD NO. 374 SEC. A

TYPE FUNDS: CITY, COUNTY & FEDERAL

SUMMARY OF ADDITIONAL RIGHT OF WAY REQUIRED

PARCEL NO.	OWNER	TYPE FUNDS	AUTHOR. NO.	DEED RECORD		DEED AREA ACRES	TO BE ACQUIRED		RESIDUE		SHT. NO.	REMARKS
				BOOK	PAGE		LAND ACRES	BLDGS	LEFT ACRES	RIGHT ACRES		
1-WL 1A-WL	Myers Y. Cooper Co.	SU	18645 108185	2538 592 600	626 118 198	20.57 0.36	No	-	19.91	7	7	Entirely in P.R.O. Leased to Davison Chemical Co. L.R. 162 Pg. 137 Out Aud. Par. # 108185 Out Aud. Par. # 18645
2-WL 2-WD 2-T	Kayden Inc.	SU	98450	2570	126	31.725	9.51 0.08 0.05	Yes	20.93	-	7.8 8 8	Excluding 1.11 Ac. in P.R.O. Excluding 0.10 Ac. in P.R.O. Temporary Road
3-WL	Able Real Estate Co.	SU	108429	2635	149	2.658	0.06	No	-	2.83	7	Excluding 0.17 Ac. in P.R.O.
4-WL 4-WD	Paul E. Fischer	SU	108394	1494	409	1.34	0.16 0.03	No	-	0.83	7.8	Excluding 0.22 Ac. in P.R.O. Excluding 0.11 Ac. in P.R.O.
5-WD	The Checker Oil Co.	SU	108440 108441 108442	868 1117 1922	508 403 298	Lot 1 Lot 2 Lot 3	0.04	No	-	0.34	8	Lindale Addition (P.B. 16 PG. 37)
6-WD	Edward Traylor	SU	108444 108445	2221	438	Lot 5 Lot 6	0.005	No	-	0.225	8	Out of Aud. Par. # 108445
7-WL 7-WD	Drumstick, Inc.	SU	99102	2360	358	31.895	11.17 2.50	No	16.66	-	8.9	Excluding 1.36 Ac. in P.R.O. Excluding 0.21 Ac. in P.R.O.
8-WD	George W. & Lydia E. Moore	SU	108446 108447	2395	186	Lot 7 Lot 8	0.005	No	-	0.225	8.9	Out of Aud. Par. # 108446
9-WD	Paul E. & Joyce Lubaski	SU	108452	2167	624	Lot 13	0.005	No	-	0.110	9	
10-WD	Ralph C. Montgomery	SU	108453	1019	302	Lot 14	0.005	No	-	0.110	9	
11-WD	Elizabeth M. Douglas	SU	108455 108459	2658	508	Lot 19 Lot 20	0.005	No	-	0.225	9	Out of Aud. Par. # 108459
12-WD	William L. & Sarah J. Webb	SU	108460	1994	139	Lot 21	0.005	No	-	0.110	9	
13-WD	David & Eunice Stevens	SU	108462	2255	145	Lot 27	0.005	No	-	0.110	9	
14-WD	Riys V. Steele	SU	108467	1805	78	Lot 28	0.005	No	-	0.110	9	
15-WD	Riys V. Steele	SU	108478	1805	78	Lot 34	0.005	No	-	0.110	9	
16-WD	Ralph H. & Mary M. Smith	SU	108474	1722	329	Lot 35	0.005	No	-	0.110	9	
17-T	Sadie L. Brown	SU	108477	2015	643	Lot 38	0.02	No	-	-	9	Construct driveway
18	Temple Israel	SU	108478	2319	423	Lot 39 Lot 40	-	-	-	-	9	not needed
19-WL	Anthony Albanese	SU	2293 1570 93645	976 780 904	315 816 400	3.0	2.89	No	-	-	11.12	

SUMMARY OF ADDITIONAL RIGHT OF WAY REQUIRED

PARCEL NO.	OWNER	TYPE FUNDS	AUTHOR. NO.	DEED RECORD		DEED AREA ACRES	TO BE ACQUIRED		RESIDUE		SHT. NO.	REMARKS
				BOOK	PAGE		LAND ACRES	BLDGS	LEFT ACRES	RIGHT ACRES		
20-WD	James G. & Betty J. Miller	SU	108480	2618	500	Lot 41	0.05	No	-	.113	10	
21-WD	Charles B. Hood	SU	126231	1032	125	Lot 1	0.05	No	-	.138	10	
22-T	Harrison D. Hauser	SU	126598 126249 126250 126251 126252	1216 1245	595 37	Lot 2 Lot 3 Lot 4 Lot 5 Lot 6	0.05	No	-	-	10	Construct driveway on Lot 6
23-WL 23-WD 23-T	Academy Operating Company	SU	99101	1924	292	22.56	4.81 1.13 0.05	No	16.14	-	9.10	Excluding 0.48 Ac. in P.R.O. Construct driveway
24-WD 24-T 24-S	Pooli Realty Company	SU	108320	1798	372	9.8	0.01 0.32 0.02	No	9.79	-	10	Leased to Huffman-Wolfe Co. L.R. 144 Pg. 621 Construct driveway and back slopes
25-WL	Mary E. Henshaw	SU	108781	2049	443	1.0	0.83	Yes	-	-	10	Excluding 0.08 Ac. in P.R.O.
26-WL	Raymond Sims	SU	108792	1572	382	1.0	0.84	Yes	-	-	10	Excluding 0.08 Ac. in P.R.O.
27-WL	Raymond & Lulu F. Sims	SU	108793	1815	612	1.0	0.84	Yes	-	-	10	Excluding 0.08 Ac. in P.R.O.
28-WL	Lulu F. Sims	SU	108795	2201	194	1.0	0.84	Yes	-	-	10	Excluding 0.08 Ac. in P.R.O.
29-WL	Leone H. & Annette Warren	SU	108782	1659	308	.887	0.59	No	-	-	10	
30-WL	Wilbur Jones	SU	109325	2018	512	0.5	0.44	Yes	-	-	10	Excluding 0.06 Ac. in P.R.O.
31-WL	Frances B. Thurman	SU	108780	2363	649	0.5	0.44	No	-	-	10	Excluding 0.06 Ac. in P.R.O.
32-WL	The Standard Oil Company	SU	108661	2185	173	0.695	0.69	Yes	-	-	10	
33-WD	Telitha E. Williams	SU	108797	2396	254	8.061	0.09	No	-	7.43	10	Excluding 0.54 Ac. in P.R.O.
34-WD 34-T	Tremarco Corp.	SU	98097	2021	520	0.516	0.01 0.06	No	0.51	-	10	Construct Driveways
35-WL	Lillian M. McKinley	SU	104646	2286 2286	219 221	6.346	5.00	No	-	-	10,11	
36-WD 36-T	Eastlawn Cemetery Association	SU	104657 104658	938 775	888 407	28.56 10.00	0.01 0.01	No	-	38.55	10 11	Out Aud. Par. # 104657 Construct driveway
37-WL 37A-WD	Clarence E. & Dulcy M. Feazel Rose M. Byrne	SU	104426	1192	616	6.0	5.22 0.92	Yes No	- -	- -	11 11	Excluding 0.06 Ac. in P.R.O. Entirely in P.R.O.
38-WD 38-T 38-T1 38-T2	Clarence E. & Dulcy M. Feazel	SU	104439	1020	403	15.2	0.09 0.01 0.02 0.02	No	-	15.11	11	Construct driveway " "
39-X	Lincoln Columbus Inc.	SU	138061 138060	2397	7	Lot 43 Lot 42	0.12	No	-	-	11	

P.R.O. indicates present road occupied

SUMMARY OF ADDITIONAL RIGHT OF WAY REQUIRED

COMPLETION DATE: Oct 11 1966		
REV	DATE	DESCRIPTION
1	3-6-67	Added Parcels 55-T and 62-T

2	OHIO	SU 1474(1)
---	------	------------

FRANKLIN COUNTY
ROAD NO. 374 SEC. A



TYPE FUNDS: CITY, COUNTY, & FEDERAL

SUMMARY OF ADDITIONAL RIGHT OF WAY REQUIRED

PARCEL NO.	OWNER	TYPE FUNDS	AUDITOR NO.	DEED RECORD		DEED AREA ACRES	TO BE ACQUIRED		RESIDUE		SHT. NO.	REMARKS
				BOOK	PAGE		LAND ACRES	BLDGs	LEFT ACRES	RIGHT ACRES		
40-X	Lincoln Columbus Inc.	SU	138019	2397 2517	7 261	Lot 1 Res. A	0.11	No	-	-	11, 12	
41-WL 41-WD 41-T 41-T1 41-S	Metzger Brothers Company, Inc.	SU	332	2345	89	150	0.51 0.05 0.17 0.02 0.04	Yes	0.94	-	11, 12	Construct driveway & back slopes Remove Outbuildings
42-WL 42-WD 42-T	Rupert D. Roach	SU	331	1230	209	0.97	0.25 0.03 0.12	No	0.69	-	12	Construct back slopes
43-WL	James H. Greenway	SU	5054	2380	63		0.53	No	-	-	12	
44-WL	Willis D. Shoub	SU	58	1367	244	1.00	0.96	Yes	-	-	11, 12	
45-WL	Antonio Serio	SU	108663	1212	120	1.00	0.96	Yes	-	-	11, 12	
46-WL	Delbert J. & Mabel E. Hull	SU	108796	1272	379	2.00	0.96	No	-	0.97	11, 12	
47-X	Louise Quaranto	SU	108772	800	239	1.00	0.28	No	-	-	12	
48-X	Giovanni & Louise Quaranto	SU	108668	1165	319	1.00	0.10	No	-	-	12	
49-WL 49-T	R. Karl & Yolanda G. Slabough	SU	109419 109285 108790 108789	2318	419	14.564	7.24 0.03	No	0.61	6.71	12	0.02 Ac. out of Aud. Par. = 109419 2.20 Ac. out of Aud. Par. = 108790 5.02 Ac. out of Aud. Par. = 108789 Service Road Construction.
50-S	Investment Construction Co.	SU	108811	2300	378	Lot 14	0.02	No	-	-	12	
51	Luisa Marchi	SU	130067	1266	316	6.52	-	-	-	-	12, 13	not needed
52-WL	Arthur C. & Lena S. Martin	SU	2204	1360	166	1.00	0.38	No	0.62	-	13	
53-WL	Marion & Doris June Bonaventura	SU	108666	1300 1734	635 181	3003	1.22	Yes	1.78	-	13	
54-WL 54-T	Dorothy Schwartz	SU	360 362 1914	1199 1806	349 102	2.86	1.06 0.08	Yes	1.68	-	13	Excluding 0.12 Acres in P.R.O. 1.06 Ac. out of Aud. Par. = 360 0.12 Ac. out of Aud. Par. = 362 Remove residence
55-WL 55-WD	Leo Bonaventura & Mary Marchi	SU	108814	1750	473	3.678	0.79 0.40	No	-	2.49	13	Presently landlocked
* 56-WL 56-WD 56-T	Jahn R. Hatem, et al (5)	SU	108786	2265 2619	523 369	1.391	0.71 0.35 0.33	Yes	-	0.33	13	Existing 10' pipeline easement to Alum Cr. Presently landlocked Remove greenhouse
57-WL 57-WD 57-T	Angelo P. & Virginia Bonaventura	SU	108787	1301	7	1002	0.36 0.35 0.15	Yes	-	0.15	13	Excluding 0.05 Acres in P.R.O. Excluding 0.09 Acres in P.R.O. Remove building
58-WL	Verl R. Burton	SU	4829	2029	520	1033	0.80	Yes	0.09	-	13	Excluding 0.05 Acres in P.R.O.
59-WL	Angelo P. Bonaventura et al (3)	SU	361	1898 2651	90 531	1.597	1.66	No	-	-	13	Excluding 0.12 Ac. in P.R.O.
* 55-T	Leo Bonaventura & Mary Marchi	SU	108814	1750	473	3.678	0.16	No	-	-	13	Construct Back slopes

SUMMARY OF ADDITIONAL RIGHT OF WAY REQUIRED

PARCEL NO.	OWNER	TYPE FUNDS	AUDITOR NO.	DEED RECORD		DEED AREA ACRES	TO BE ACQUIRED		RESIDUE		SHT. NO.	REMARKS
				BOOK	PAGE		LAND ACRES	BLDGs	LEFT ACRES	RIGHT ACRES		
60-WL	Mary Ruth Shull et al (3)	SU	378 255	2498	332	41.20	12.78	Yes	28.01	-	13, 14 15	Excluding 0.41 Ac. in P.R.O. Out of Aud. Par. = 255
61-WL	Champion Amusement Co.	SU	2208	1913	163	41.00	11.63	No	3.51	25.36	13, 14 15	Excluding 0.51 Ac. in P.R.O.
62-T	Faye H. Dellenbaugh	SU	2304	1305	549	-	0.01	No	-	-	13	Construct driveway
UTILITIES												
Columbus & Southern Ohio Electric Co. 215 North Front St. Columbus, Ohio 43215												
Ohio Bell Telephone Co. 111 North Fourth St. Columbus, Ohio 43215												
Columbia Gas of Ohio Inc. 109 North Front St. Columbus, Ohio 43215												
City of Columbus Division of Water City Hall Columbus, Ohio 43215												
City of Columbus Division of Sewerage and Drainage City Hall Columbus, Ohio 43215												

P.R.O. indicates present road occupied

SUMMARY OF ADDITIONAL RIGHT OF WAY REQUIRED

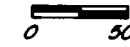
QUARTER - TOWNSHIP 4, TOWNSHIP 1, RANGE 18
U.S. MILITARY LANDS

CITY OF COLUMBUS

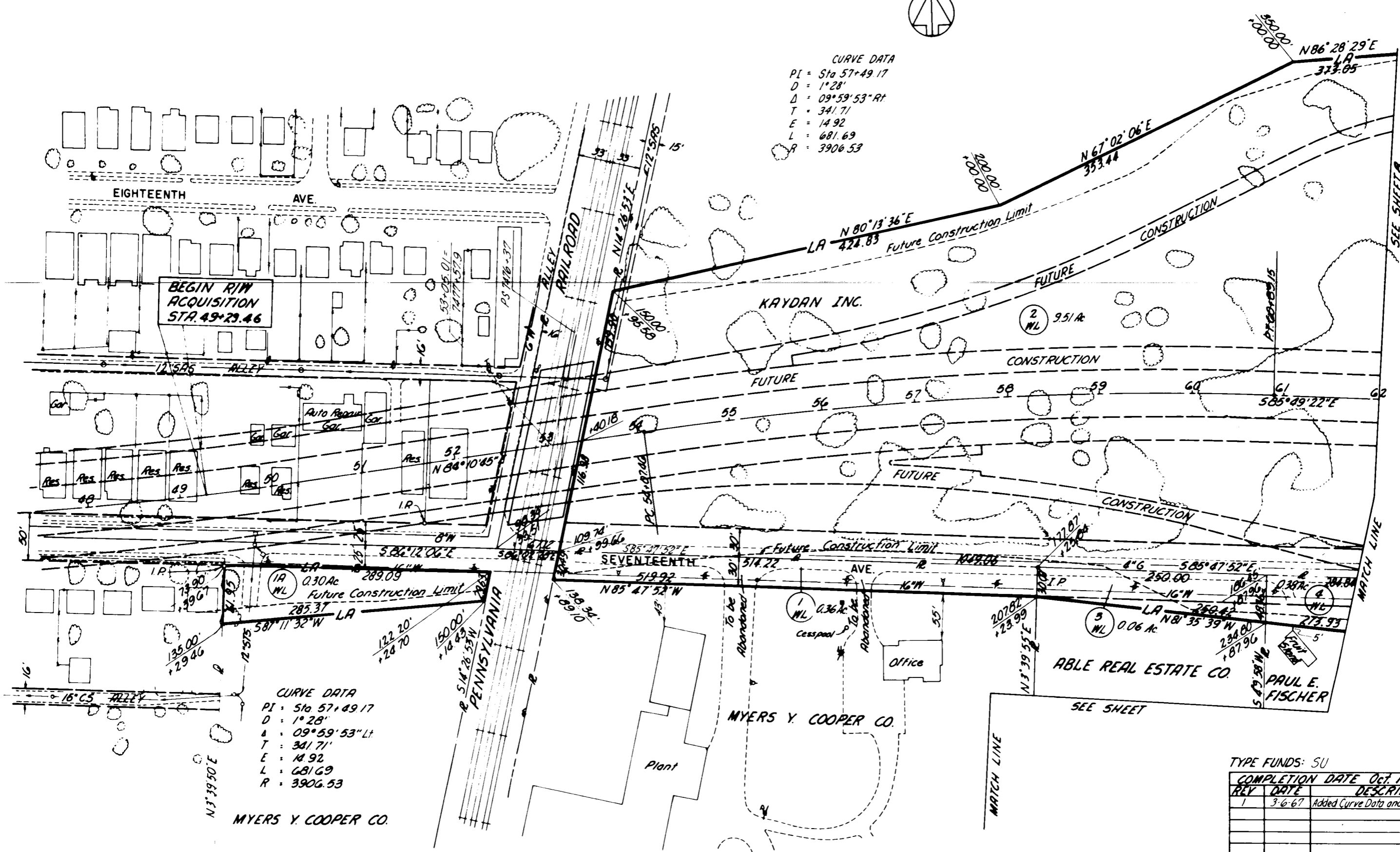
2	OHIO	SU 1474(1)
---	------	------------

FRANKLIN COUNTY
ROAD NO. 374 SEC. A

7
15



CURVE DATA
PI = Sta 57+49.17
D = 1°28'
Δ = 09°59'53" Rt
T = 341.71
E = 14.92
L = 681.69
R = 3906.53



CURVE DATA
PI = Sta 57+49.17
D = 1°28'
Δ = 09°59'53" Lt
T = 341.71
E = 14.92
L = 681.69
R = 3906.53

MYERS Y. COOPER CO.

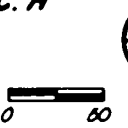
TYPE FUNDS: SU

REV	DATE	DESCRIPTION
1	3-6-67	Added Curve Data and Railroad Stationing

RIGHT OF WAY 48+00 TO 62+00

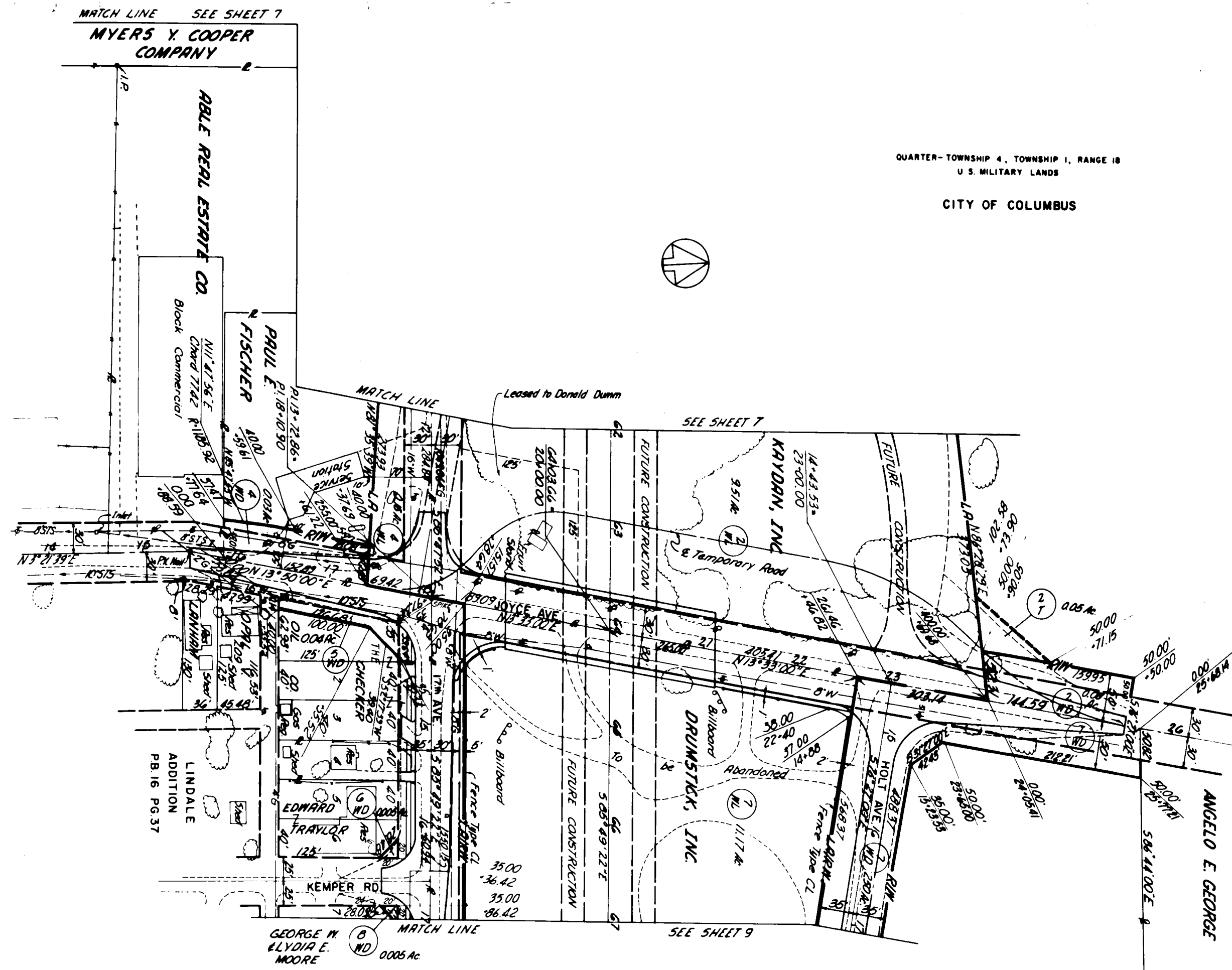
2	OHIO	SU 1474(1)
---	------	------------

FRANKLIN COUNTY
ROAD NO. 374 SEC. A



QUARTER-TOWNSHIP 4, TOWNSHIP 1, RANGE 18
U. S. MILITARY LANDS

CITY OF COLUMBUS



ITEM	DESCRIPTION	UNIT	QUANTITY
607	Fence, Type CL	LF	648

TYPE FUNDS: SU

COMPLETION DATE	OCT. 11, 1966
REV DATE	DESCRIPTION
1	3-6-67 Revised topography on Parcel 5-WD

RIGHT OF WAY 62+00 to 67+00

CURVE DATA
 D: 3°00'00"
 Δ: 9°22'22" Lt
 T: 186.56
 E: 6.41
 L: 312.43
 R: 1909.66

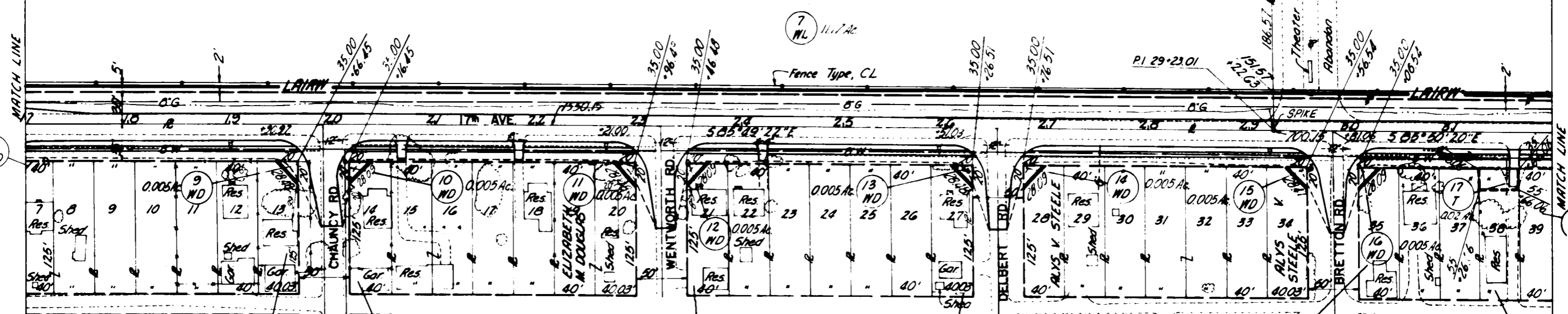
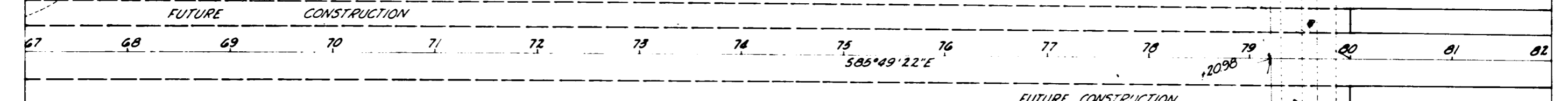
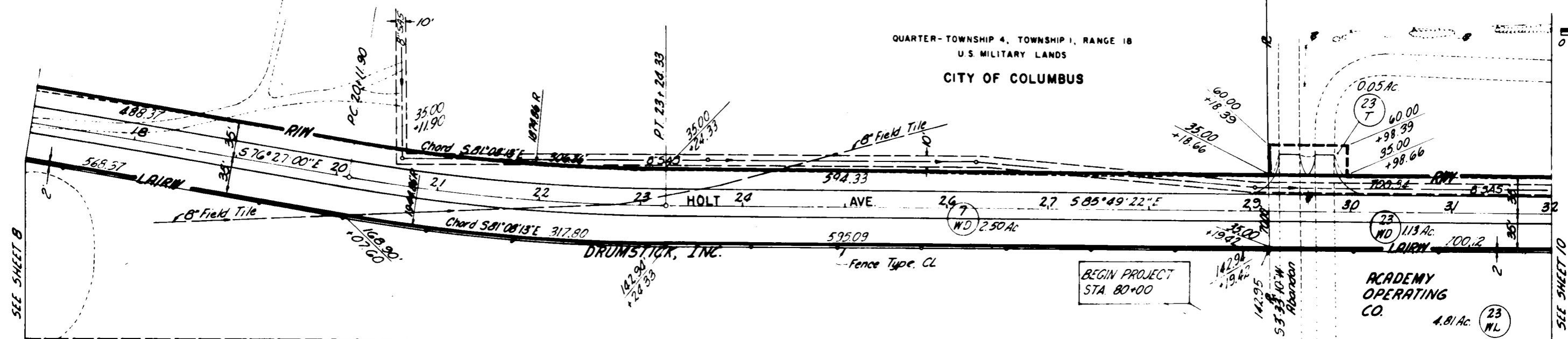
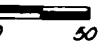


FIG. NO.	2
DATE	OHIO 50 1414 (1)

FRANKLIN COUNTY
 ROAD NO. 374 SEC. A

9
15

QUARTER-TOWNSHIP 4, TOWNSHIP 1, RANGE 18
 U.S. MILITARY LANDS
 CITY OF COLUMBUS



TYPE FUNDS: SU

REV	DATE	COMPLETION DATE	DESCRIPTION
1	3-6-67	OCT. 11, 1966	Revised Parcel 23-T

ITEM	DESCRIPTION	UNIT	QUANTITY
607	Fence, Type CL	L.F.	3013

RIGHT OF WAY 67+00 TO 82+00

QUARTER-TOWNSHIP 4, TOWNSHIP 1, RANG.
U.S. MILITARY LANDS

TOWNSHIP 3, TOWNSHIP 1, RANGE 17
U.S. MILITARY LANDS

CITY OF COLUMBUS

2	OHIO	SU 1474(1)
---	------	------------

FRANKLIN COUNTY
ROAD NO. 374 SEC. A

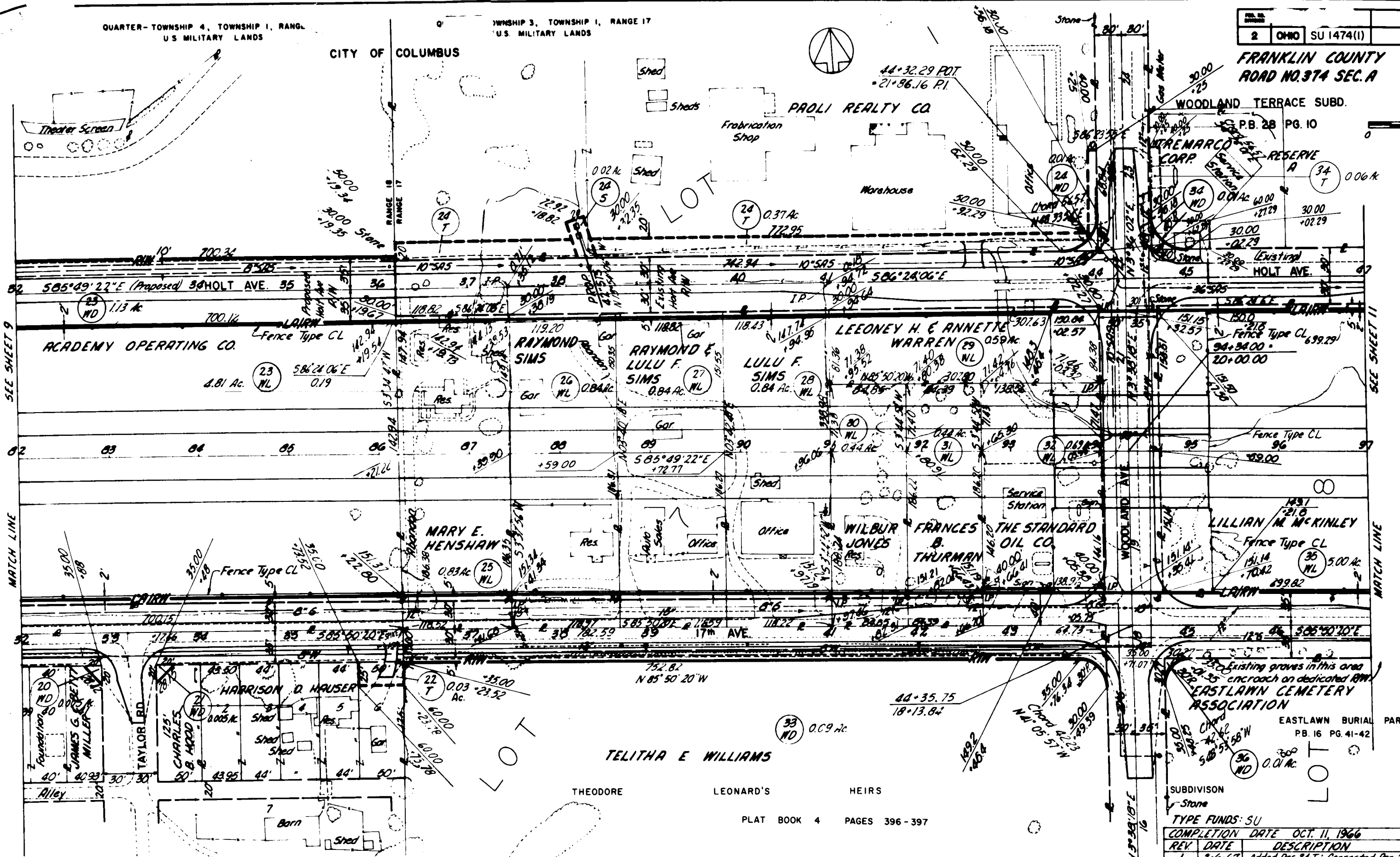
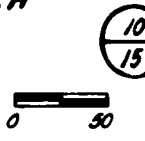
WOODLAND TERRACE SUBD.

PB. 28 PG. 10

RESERVE

ANTREMARCO CORP.

0.06 Ac.



SEE SHEET 9

MATCH LINE

SEE SHEET 11

MATCH LINE

LINDALE ADD.
PB. 16 PG. 37

LINDALE ANNEX
PB. 19 PG. 45

PLAT BOOK 4 PAGES 396 - 397

ITEM	DESCRIPTION	UNIT	QUANTITY
607	Fence, Type CL	LF	3086

REV.	DATE	DESCRIPTION
1	3-6-67	Added Par. 34-T; Corrected Par. 29-WL

RIGHT OF WAY 82+00 TO 97+00

QUARTER-TOWNSHIP 3, TOWNSHIP 1, RANGE 17
U.S. MILITARY LANDS

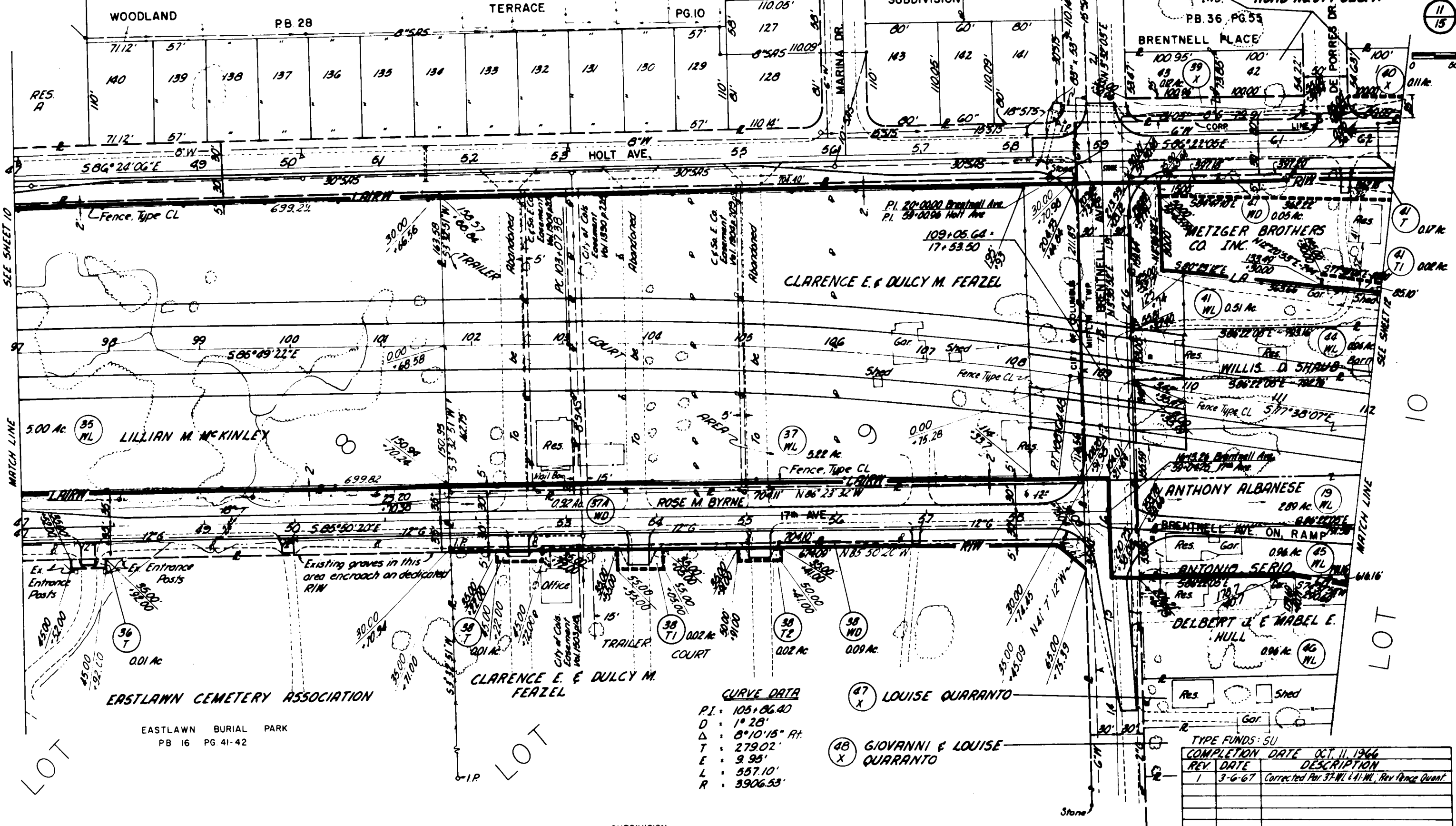


2 OHIO SU 1474(1)

LINCOLN COLUMBUS INC. FRANKLIN COUNTY ROAD NO. 374 SEC. A

PB. 36 PG. 55

11 15



SEE SHEET 10

MATCH LINE

MATCH LINE

LOT

LOT

CURVE DATA
P.I. : 105+06.40
D : 1° 28'
Δ : 8° 10' 15" Rt.
T : 279.02'
E : 9.95'
L : 557.10'
R : 3906.53'

EASTLAWN BURIAL PARK
PB 16 PG 41-42

THEODORE LEONARD'S HEIRS SUBDIVISION
PLAT BOOK 4 PAGES 396-397

TYPE FUNDS: SU

COMPLETION DATE OCT. 11, 1966

REV. DATE DESCRIPTION

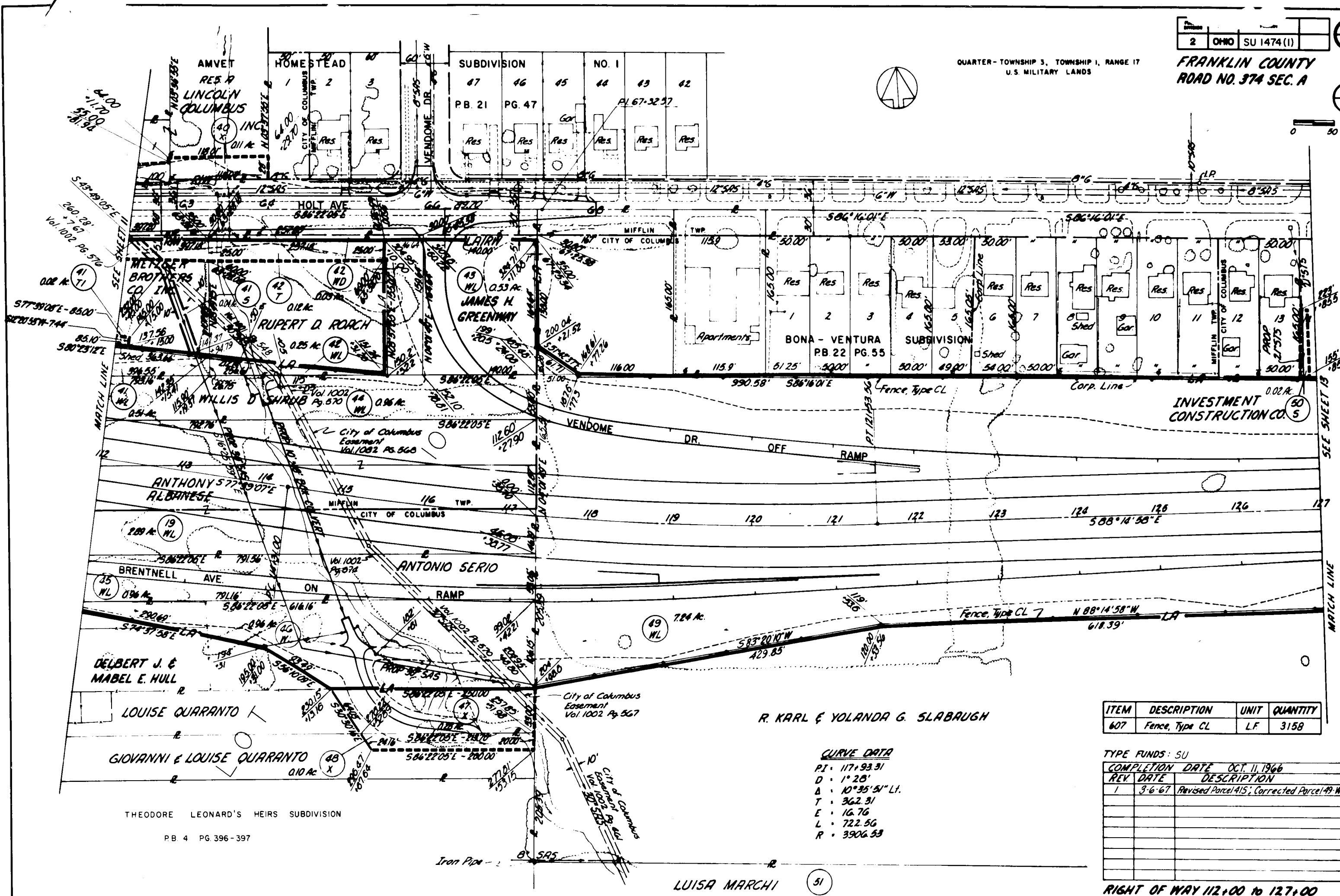
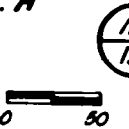
1 3-6-67 Corrected Plat 37-WL 44-WL, Rev Fence Quant.

ITEM	DESCRIPTION	UNIT	QUANTITY
607	Fence, Type CL	L.F.	3026

RIGHT OF WAY 97+00 to 112+00

QUARTER - TOWNSHIP 3, TOWNSHIP 1, RANGE 17
U.S. MILITARY LANDS

FRANKLIN COUNTY
ROAD NO. 374 SEC. A



THEODORE LEONARD'S HEIRS SUBDIVISION
PB 4 PG. 396-397

R. KARL & YOLANDA G. SLABAUGH

CURVE DATA
 PI = 117+93.31
 D = 1° 28'
 Δ = 10° 35' 51" Lt.
 T = 362.31
 E = 16.76
 L = 722.56
 R = 3906.53

ITEM	DESCRIPTION	UNIT	QUANTITY
607	Fence, Type CL	L.F.	3158

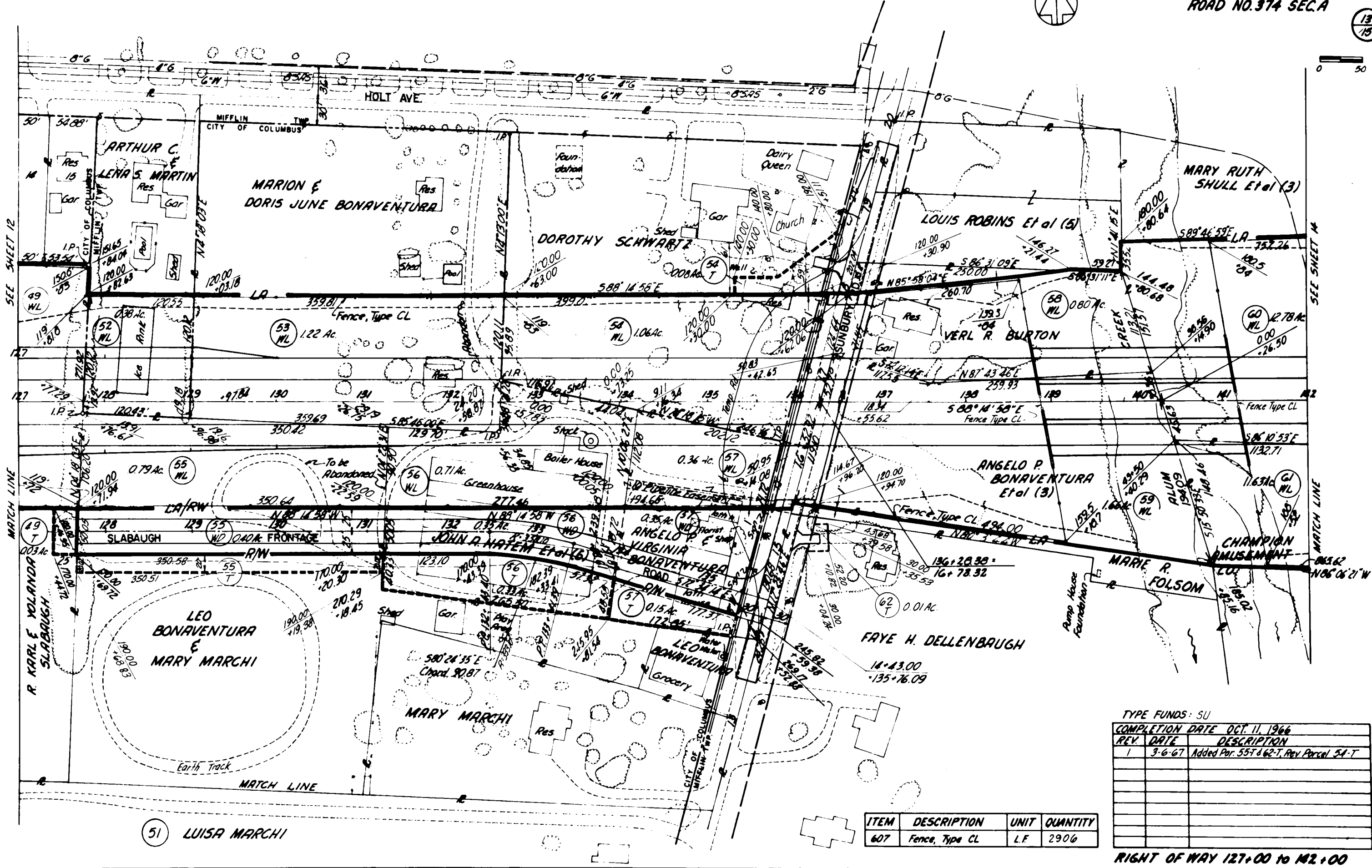
TYPE FUNDS: SU

REV	DATE	DESCRIPTION
1	3-6-67	Revised Parcel 415; Corrected Parcel 49-WL

COMPLETION DATE OCT. 11, 1966

LUISA MARCHI (51)

RIGHT OF WAY 112+00 to 127+00



(51) LUISA MARCHI

ITEM	DESCRIPTION	UNIT	QUANTITY
607	Fence, Type CL	L.F.	2906

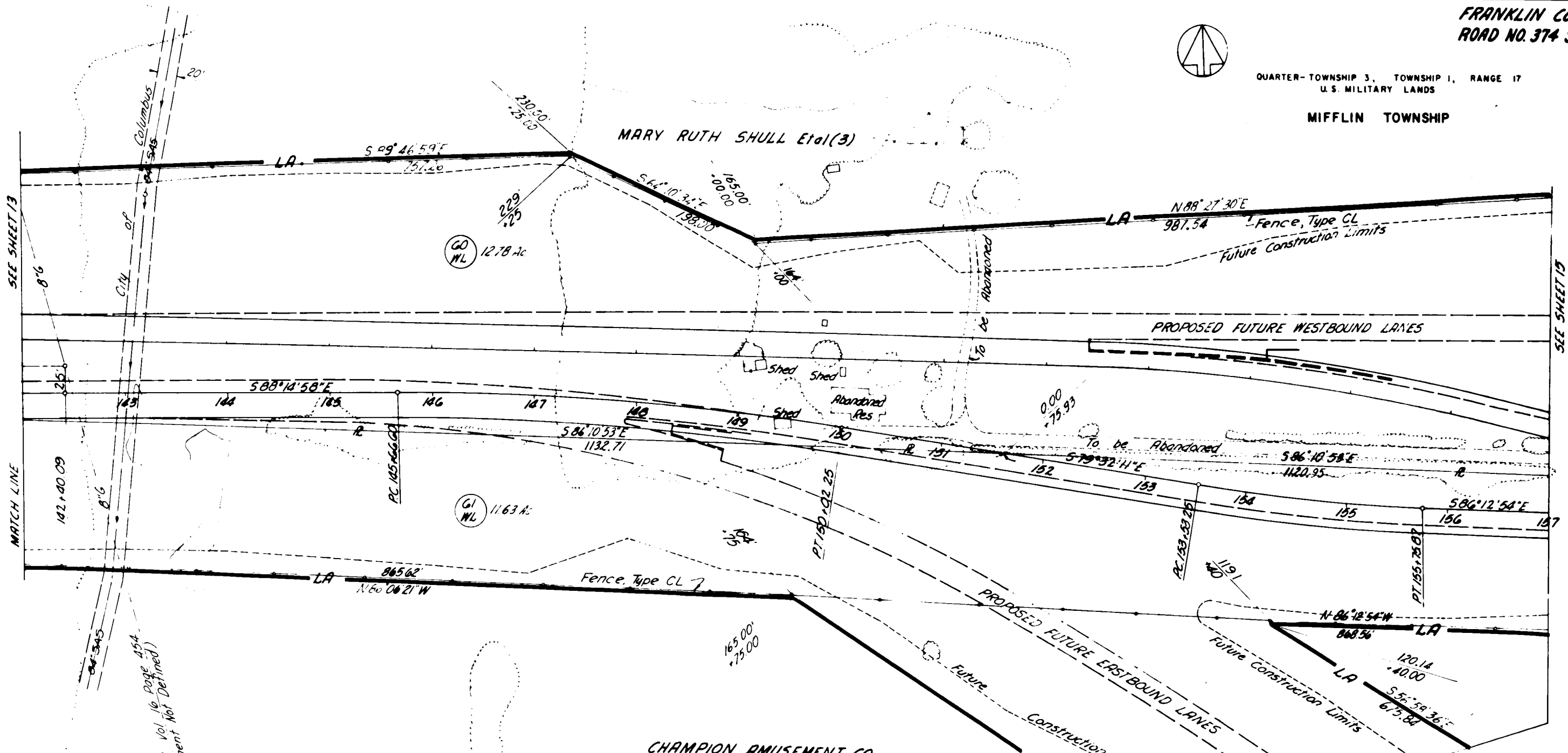
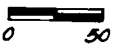
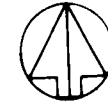
TYPE FUNDS: SU		
COMPLETION DATE OCT. 11, 1966		
REV.	DATE	DESCRIPTION
1	3-6-67	Added Por. 55T & 62-T, Rev. Parcel 54-T

RIGHT OF WAY 127+00 TO 142+00

FRANKLIN COUNTY
ROAD NO. 374 SEC. A

QUARTER-TOWNSHIP 3, TOWNSHIP 1, RANGE 17
U.S. MILITARY LANDS

MIFFLIN TOWNSHIP



SEE SHEET 13

SEE SHEET 13

MATCH LINE

MATCH LINE

Misc Record, Vol. 16 Page 454
(Easement Not Defined)

CHAMPION AMUSEMENT CO.

RESERVE "E"

LAMB'S SUBURBAN ADDITION

PLAT BOOK 7 PAGES 484 - 486

CURVE DATA
 PI = 147+89.85
 D = 2°00'00"
 Δ = 8°42'47" RT
 T = 218.25
 E = 8.30
 L = 435.65
 R = 2864.79

CURVE DATA
 PI = 154+64.69
 D = 3°00'00"
 Δ = 6°40'43" LT
 T = 111.44
 E = 3.25
 L = 222.62
 R = 1909.86

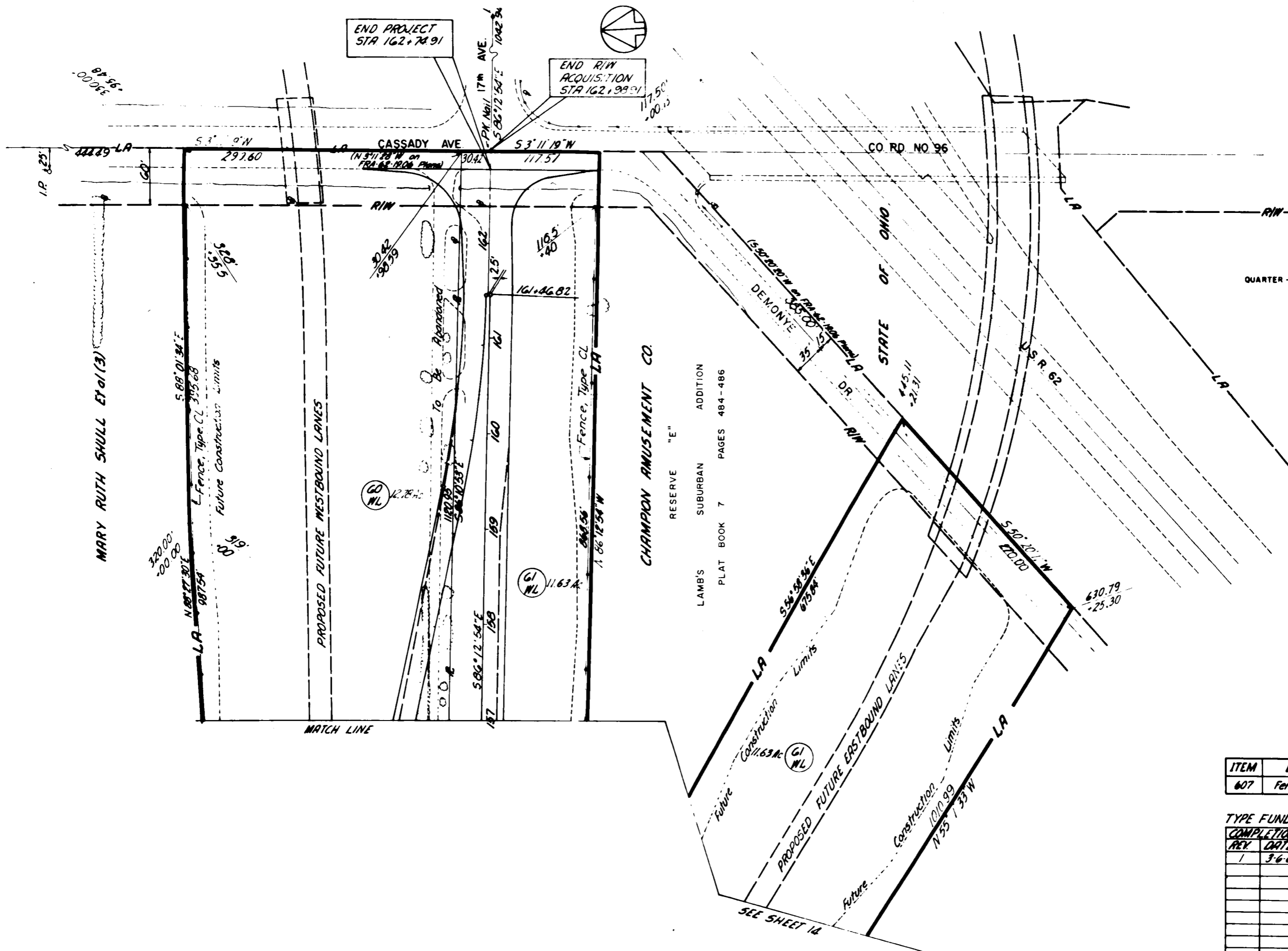
ITEM	DESCRIPTION	UNIT	QUANTITY
607	Fence, Type CL	L.F.	3025

TYPE FUNDS: SU

REV	DATE	DESCRIPTION
1	3-6-67	Added Sanitary Sewer & Gas Easements

RIGHT OF WAY 142+00 TO 157+00

QUARTER - TOWNSHIP 3, TOWNSHIP 1, RANGE 17
U.S. MILITARY LANDS
MIFFLIN TOWNSHIP



CHAMPION AMUSEMENT CO.

RESERVE "E"
LAMB'S SUBURBAN ADDITION
PLAT BOOK 7 PAGES 484-486

ITEM	DESCRIPTION	UNIT	QUANTITY
607	Fence, Type CL	L.F.	1088

TYPE FUNDS: SU

REV.	DATE	DESCRIPTION
		COMPLETION DATE OCT. 11, 1966
1	3-6-67	Added Subdivision Data

RIGHT OF WAY 157+00 to 162+98.91

Cont'd. - Seventeenth Ave., Sec. "A", Mifflin Twp. & the City of Cols. (Establishing, Altering, Widening, Relocating, Extending and Declaring Limited Access.

October 14, 1966

ESTABLISHING, ALTERING, WIDENING, RELOCATING, EXTENDING
AND DECLARING LIMITED ACCESS, SEVENTEENTH AVENUE, SECTION
"A", COUNTY ROAD NO. 374, MIFFLIN TOWNSHIP AND CITY OF
COLUMBUS - APPROVED.

Pursuant to continuation in the matter of establishing, altering, widening, relocating, extending and declaring limited access, Seventeenth Avenue, Section "A", County Road No. 374, Mifflin Township and the City of Columbus, Mr. Myers offered the following preamble and resolution and moved the adoption of the same, which motion was duly seconded by Mr. Southwick.

WHEREAS, on the 28th day of April, 1964, the Board of County Commissioners of Franklin County, Ohio, did by resolution duly adopted authorize and direct the Engineer of Franklin County, Ohio, to make a report in writing relative to the establishing, altering, widening, relocating, extending and declaring limited access Seventeenth Avenue, Section "A", County Road No. 374, Mifflin Township and the City of Columbus, to said Board on or before 10:00 o'clock A.M., of January 8, 1965, said report to be in manner and form prescribed in Section 5553.06 of the Revised Code of Ohio; and

WHEREAS, pursuant to continuation, this 14th day of October 1966, was fixed as the final hearing in said matter and the County Engineer having filed his report thereon and plat thereof and recommended that Seventeenth Avenue, Section "A", County Road No. 374, Mifflin Township and the City of Columbus be established, altered, widened, relocated, extended and declared limited access to the various widths as described in said report and shown on said plat; and

WHEREAS, no objections to said improvement were made; and

WHEREAS the Board of County Commissioners of Franklin County, Ohio, finds that the public welfare and convenience require the establishing, altering, widening, relocating, extending and declaring limited access of Seventeenth Avenue, Section "A", as shown in the report, and on the plat submitted by the County Engineer, now therefore

BE IT RESOLVED, by the Board of County Commissioners of Franklin County, Ohio, that said Seventeenth Avenue, Section "A", herein referred to, is hereby found and determined to be of sufficient importance to the public convenience and welfare to cause the establishing, altering, widening, relocating, extending and declaring limited access thereof as recommended by the County Engineer, and as shown on the plat submitted by said Engineer.

Voting Aye thereon: Henry A. Koontz, Robert T. Southwick and Glenn L. Myers.

* * * * *