

PLAT OF OTTERBEIN AVENUE

Engineer's Plat
attached in this
see Rd. Rec. 16 - Page 280

PLAT OF DEDICATION OF A 16 FOOT ALLEY
IN MARION TOWNSHIP, FRANKLIN COUNTY RUNNING
NORTH FROM JOS. BERGER'S SUBDIVISION,
ACCEPTED BY BOARD OF COUNTY COMMISSIONERS.

On motion of Mr. Lauderbaugh, seconded by Mr. McCoy, the plat of dedication, presented by Horace L. Mayne, of a strip of ground 16 feet in width and 437.34 ft. plus or minus in length; beginning at an iron pin, as shown in the east line of South Fifth Street extended to the north line of a 10 foot alley, as shown in the Joseph Berger's Subdivision, Marion Township, thence northwardly 437.34 feet to an iron pin, thence westwardly 16 feet to an iron pin, thence southwardly 437.34 feet, plus or minus, to the southeast corner of a 0.8086 acre tract owned by Kenneth Webb. Thence eastwardly 16 feet to the point of beginning, said described tract used as an alley and owned by Horace L. Mayne, be and the same is hereby accepted by the Board of County Commissioners of Franklin County, Ohio, and said alley therein dedicated to the public use for alley purposes accepted as such.

Voting Aye thereon: Harry T. Vigor, G. P. Lauderbaugh, and Nathan A. McCoy, Jr.

FRANKLIN CO. O., ROAD RECORD No. 17

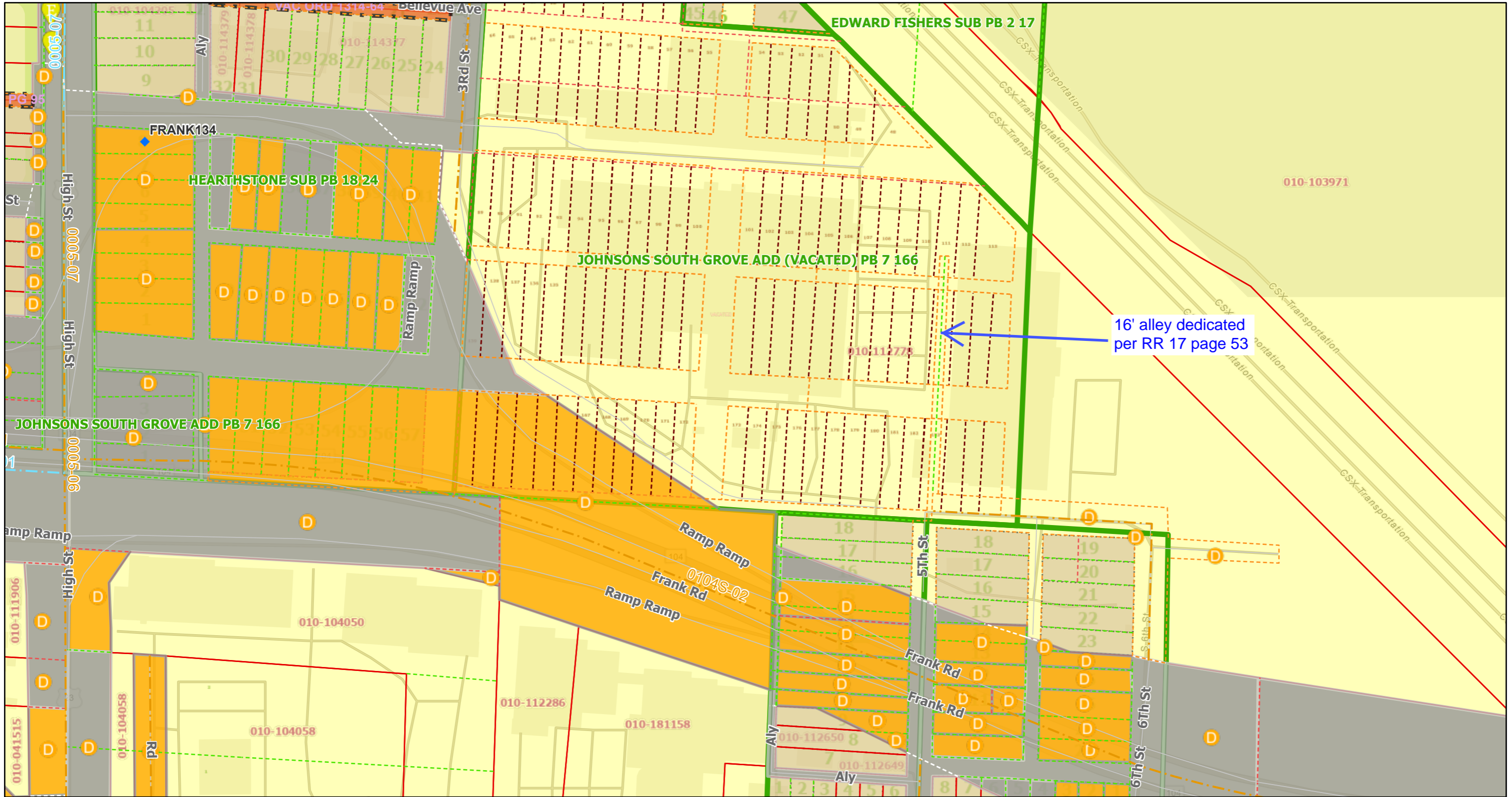
Plat of Dedication of 16 ft alley, Marion Twp, Jos. Berger Sub-Div.

THE COL. S. E. MFG. CO. 83512

PLAT OF DEDICATION OF 16 FT ALLEY IN MARION TOWNSHIP FRANKLIN COUNTY.

Handwritten: 16 ft Alley
16 ft Alley

ArcGIS Web Map



11/20/2023, 8:58:25 AM

1:2,257

Monuments

◆ Horizontal with Coordinates

Engineer Centerlines

0

5



Easements

Street Network

Original Lot Lines

Lot Lines/Ownership to C/L

Acreage Tract Lines

Vac R/W Lines

R/W (L/A, Path, Sidewalk...)

Vac Sub Lines

Right of Way

Public Right Of Way

Deed - R/W

Historic - R/W

Subs and Condos

Subdivision

Tax Parcel

Lots

Lots

Parcel IDs

0 0.02 0.04 0.08 mi

0 0.03 0.07 0.13 km

Esri Community Maps Contributors, Franklin County Auditor, © OpenStreetMap, Microsoft, Esri, HERE, Garmin, SafeGraph, GeoTechnologies, Inc, METI/NASA, USGS, EPA, NPS, US Census Bureau, USDA

Web AppBuilder for ArcGIS