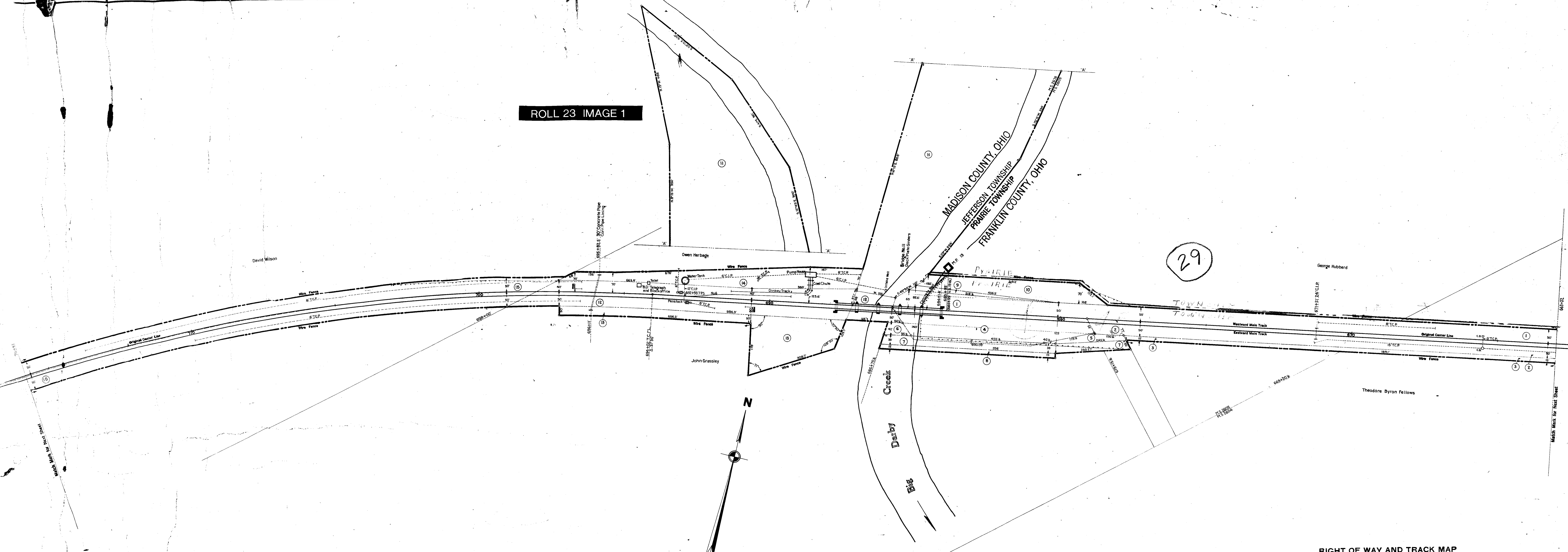


ROLL 23 IMAGE 1



SCHEDULE OF SIDINGS AND CROSSOVERS

Location	Class	Length June 30, 1919	Total	Remarks
		R.R. Co.	Private	
Jefferson Township	Y	36.7	36.7	

Correct as of Dec 31, 1927 No Revision  
 Correct as of June 30, 1927 No Revision  
 Correct as of June 30, 1926 No Revision  
 Correct as of June 30, 1925 No Revision  
 Correct as of June 30th 1924 No Revision  
 Correct as of June 30th 1923 No Revision  
 Correct as of June 30th 1922 No Revision  
 Correct as of June 30th 1921 No Revision  
 Correct as of June 30th 1920 No Revision  
 Correct as of June 30th 1919 No Revision  
 Correct as of June 30th 1918 No Revision  
 Correct as of June 30th 1917 No Revision

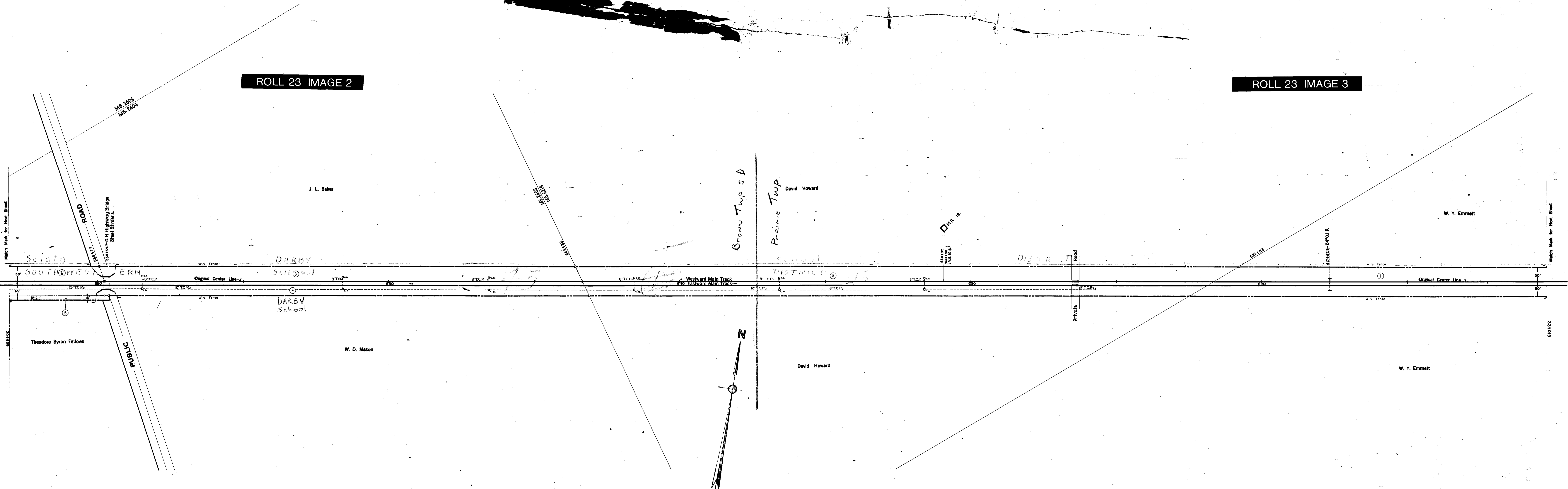
Sheet No. 11 V. 6 Ohio, of Columbus and Xenia Railroad, from  
 Survey Station 663+02 to Survey Station 715+82  
 Chief Draftsman

RIGHT OF WAY AND TRACK MAP  
 COLUMBUS & XENIA RAILROAD  
 OPERATED BY  
**THE PITTSBURGH, CINCINNATI, CHICAGO & ST. LOUIS RY. CO.**  
 CINCINNATI DIVISION  
 STATION 663+02 TO STATION 715+82  
 SCALE: 1" = 100 FT. JUNE 30, 1919  
 OFFICE OF VALUATION ENGINEER  
 PITTSBURGH, PA.

FRANKLIN COUNTY, OHIO  
PRAIRIE TOWNSHIP

ROLL 23 IMAGE 2

ROLL 23 IMAGE 3



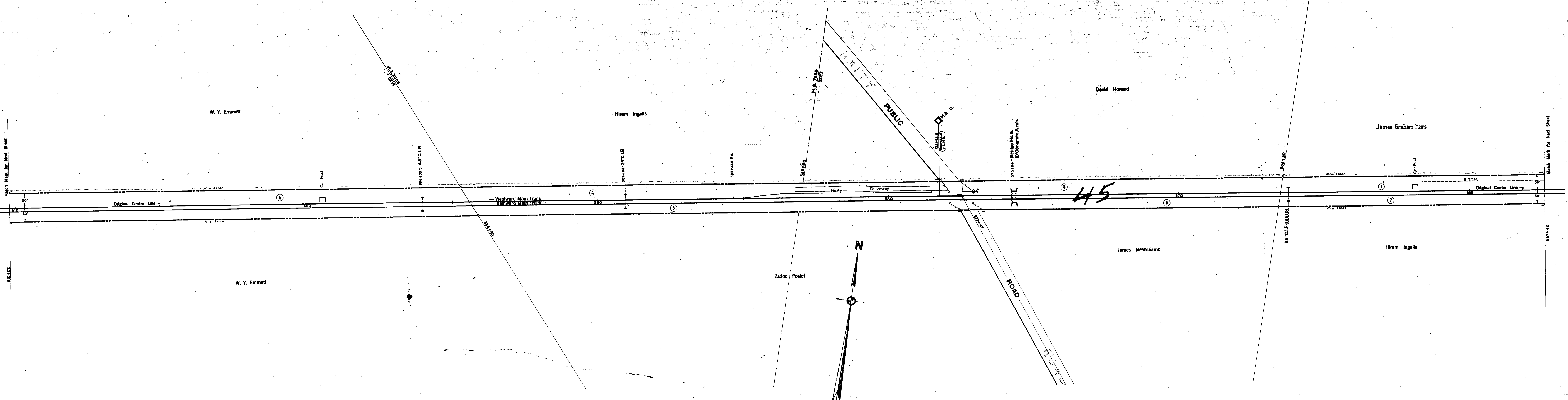
Correct as of Dec. 31, 1917	No Revision
Correct as of June 30, 1917	No Revision
Correct as of June 30, 1916	No Revision
Correct as of June 30, 1915	No Revision
Correct as of June 30th 1914	No Revision
Correct as of June 30th 1913	No Revision
Correct as of June 30th 1912	No Revision
Correct as of June 30th 1911	No Revision
Correct as of June 30th 1910	No Revision
Correct as of June 30th 1909	No Revision
Correct as of June 30th 1908	No Revision
Correct as of June 30th 1907	No Revision

Sheet No. 10 V. 6 Ohio, of Columbus and Xenia Railroad, from  
Survey Station 610+22 to Survey Station 663+02  
Chief Draftsman

**RIGHT OF WAY AND TRACK MAP**  
**COLUMBUS & XENIA RAILROAD**  
OPERATED BY  
**THE PITTSBURGH, CINCINNATI, CHICAGO & ST. LOUIS RY. CO.**  
CINCINNATI DIVISION  
STATION 610+22 TO STATION 663+02  
SCALE: 1 IN. = 100 FT. JUNE 30, 1916  
OFFICE OF VALUATION ENGINEER  
PITTSBURGH, PA.

FRANKLIN COUNTY, OHIO  
PRAIRIE TOWNSHIP

ROLL 23 IMAGE 4



**SCHEDULE OF SIDINGS AND CROSSOVERS**

Siding Number	Location	Class	Length June 30		Remarks
			R.R.Co.	Private	
1	Prairie Twp.	D	681'	681'	

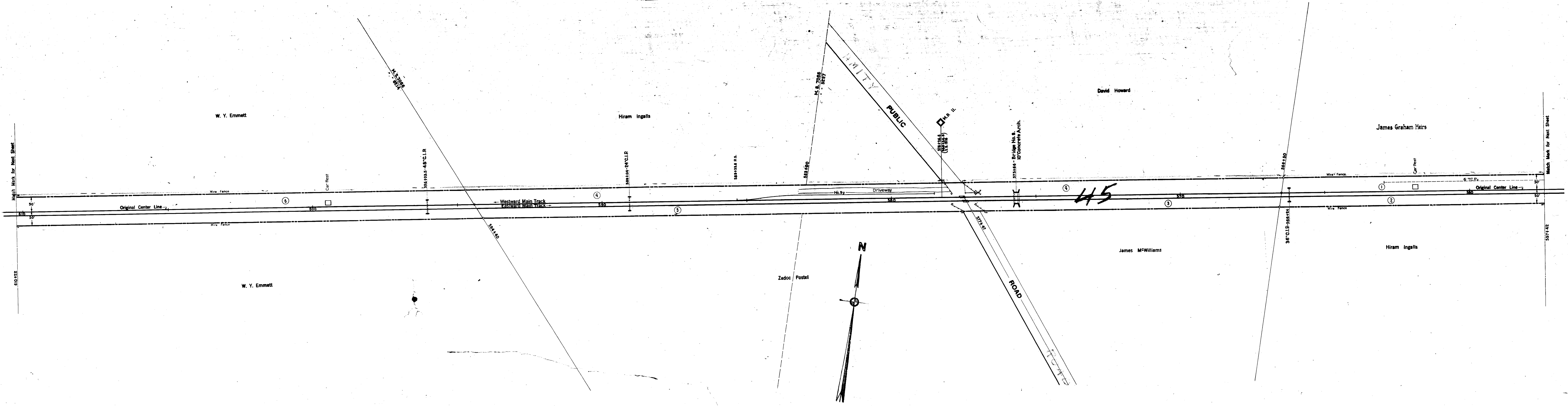
Correct as of Dec 31, 1927	No Revision
Correct as of June 30, 1927	No Revision
Correct as of June 30, 1926	No Revision
Correct as of June 30th 1925	No Revision
Correct as of June 30th 1924	No Revision
Correct as of June 30th 1923	No Revision
Correct as of June 30th 1922	No Revision
Correct as of June 30th 1921	No Revision
Correct as of June 30th 1920	No Revision
Correct as of June 30th 1919	No Revision
Correct as of June 30th 1918	No Revision
Correct as of June 30th 1917	No Revision

Sheet No. 9 V. 6 Ohio, of Columbus and Xenia Railroad, from  
Survey Station 557+42 to Survey Station 610+22

**RIGHT OF WAY AND TRACK MAP**  
**COLUMBUS & XENIA RAILROAD**  
OPERATED BY  
**THE PITTSBURGH, CINCINNATI, CHICAGO & ST. LOUIS RY. CO.**  
CINCINNATI DIVISION  
STATION 557+42 TO STATION 610+22  
SCALE: 1 IN. = 100 FT. JUNE 30, 1918  
OFFICE OF VALUATION ENGINEER  
PITTSBURGH, PA.

FRANKLIN COUNTY, OHIO  
PRAIRIE TOWNSHIP

ROLL 23 IMAGE 4



SCHEDULE OF SIDINGS AND CROSSOVERS

Side Track Number	Location	Class	Length June 30, 1916	Total	Remarks
9	Prairie Twp.	D	681'	681'	

Correct as of Dec 31, 1917 No Revision  
 Correct as of June 30, 1917 No Revision  
 Correct as of June 30, 1916 No Revision  
 Correct as of June 30th 1925 No Revision  
 Correct as of June 30th 1924 No Revision  
 Correct as of June 30th 1923 No Revision  
 Correct as of June 30th 1922 No Revision  
 Correct as of June 30th 1921 No Revision  
 Correct as of June 30th 1920 No Revision  
 Correct as of June 30th 1919 No Revision  
 Correct as of June 30th 1918 No Revision  
 Correct as of June 30th 1917 No Revision

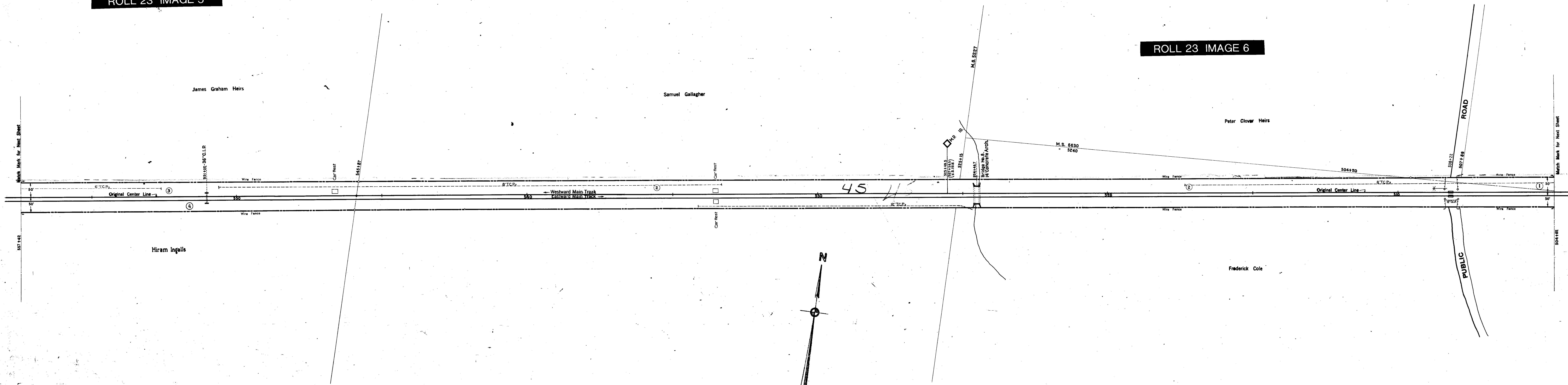
Sheet No. 9 V. 6 Ohio, of Columbus and Xenia Railroad, from  
 Survey Station 557+42 to Survey Station 610+22

RIGHT OF WAY AND TRACK MAP  
 COLUMBUS & XENIA RAILROAD  
 OPERATED BY  
**THE PITTSBURGH, CINCINNATI, CHICAGO & ST. LOUIS RY. CO.**  
 CINCINNATI DIVISION  
 STATION 557+42 TO STATION 610+22  
 SCALE: 1 IN. = 100 FT. JUNE 30, 1916  
 OFFICE OF VALUATION ENGINEER  
 PITTSBURGH, PA.

FRANKLIN COUNTY, OHIO  
PRAIRIE TOWNSHIP

ROLL 23 IMAGE 5

ROLL 23 IMAGE 6



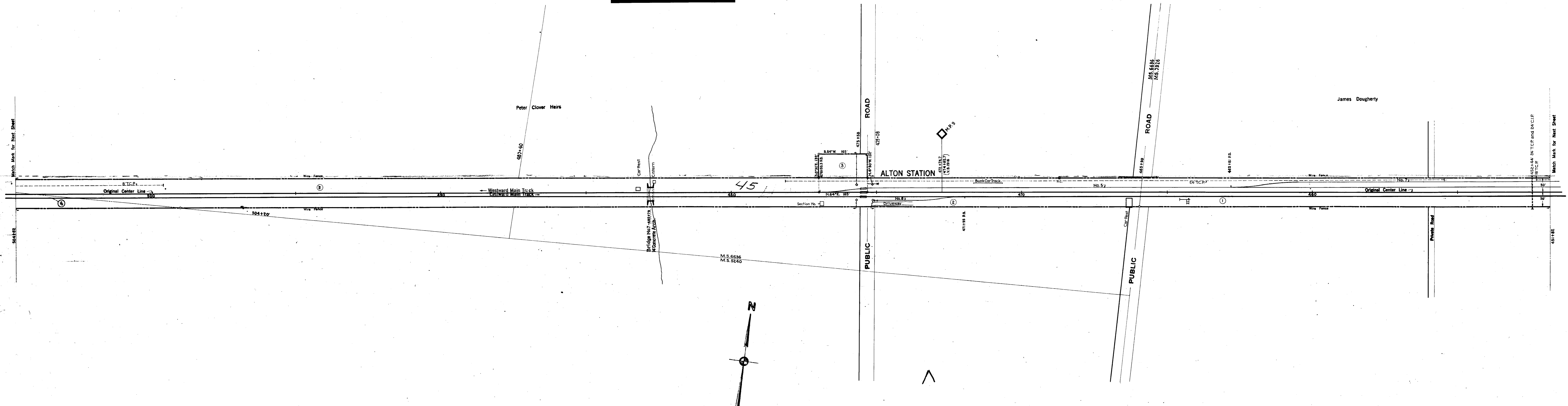
Correct as of Dec. 31, 1917	No Revision
Correct as of June 30, 1917	No Revision
Correct as of June 30, 1916	No Revision
Correct as of June 30, 1915	No Revision
Correct as of June 30th 1914	No Revision
Correct as of June 30th 1913	No Revision
Correct as of June 30th 1912	No Revision
Correct as of June 30th 1911	No Revision
Correct as of June 30th 1910	No Revision
Correct as of June 30th 1909	No Revision
Correct as of June 30th 1908	No Revision
Correct as of June 30th 1907	No Revision

Sheet No. B V. 6 Ohio, of Columbus and Xenia Railroad, from  
Survey Station 504+62 to Survey Station 557+42  
Chief Draftsman

RIGHT OF WAY AND TRACK MAP  
COLUMBUS & XENIA RAILROAD  
OPERATED BY  
**THE PITTSBURGH, CINCINNATI, CHICAGO & ST. LOUIS RY. CO.**  
CINCINNATI DIVISION  
STATION 504+62 TO STATION 557+42  
SCALE: 1 IN. = 100 FT. JUNE 30, 1916  
OFFICE OF VALUATION ENGINEER  
PITTSBURGH, PA.

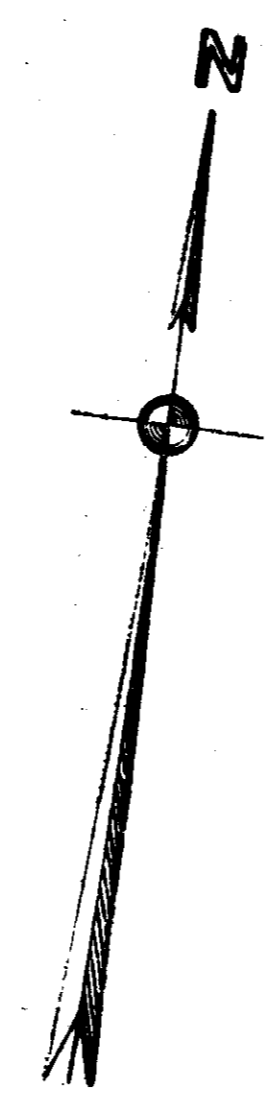
FRANKLIN COUNTY, OHIO  
PRAIRIE TOWNSHIP

ROLL 23 IMAGE 7



SCHEDULE OF SIDINGS AND CROSSOVERS

Side Track Number	Location	Class	Length June 30'	Total	Remarks
	Prairie Township	R.R.Co. Private			See Proceeding Map.
5		Y	1433'	1433'	
7		Y	319'	319'	
8		Y			



Correct as of Dec 31, 1927 No Revisions  
 Correct as of June 30, 1926 No Revision  
 Correct as of June 30, 1925 No Revision  
 Correct as of June 30, 1924 No Revision  
 Correct as of June 30, 1923 No Revision  
 Correct as of June 30, 1922 No Revision  
 Correct as of June 30, 1921 No Revision  
 Correct as of June 30, 1920 No Revision  
 Correct as of June 30, 1919 No Revision  
 Correct as of June 30, 1918 No Revision  
 Correct as of June 30, 1917 No Revision

Sheet No. 7 V. 6 Ohio, of Columbus and Xenia Railroad, from  
 Survey Station 451+82 to Survey Station 504+62

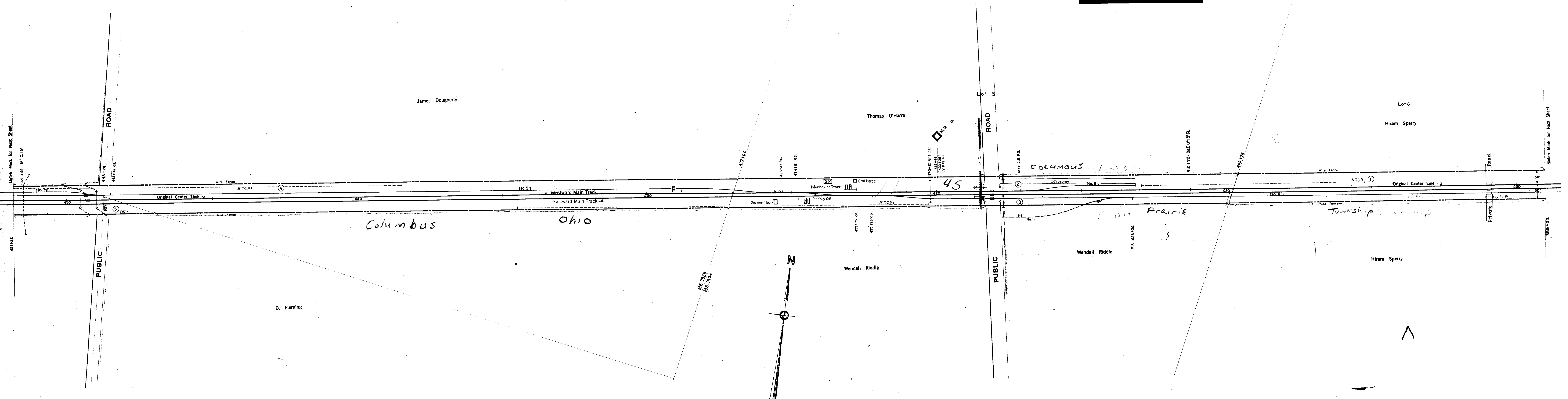
Chief Draftsman

RIGHT OF WAY AND TRACK MAP  
 COLUMBUS & XENIA RAILROAD  
 OPERATED BY  
**THE PITTSBURGH, CINCINNATI, CHICAGO & ST. LOUIS RY. CO.**  
 CINCINNATI DIVISION  
 STATION 451+82 TO STATION 504+62  
 SCALE: 1 IN. = 100 FT. JUNE 30, 1918  
 OFFICE OF VALUATION ENGINEER  
 PITTSBURGH, PA.

FRANKLIN COUNTY, OHIO  
PRAIRIE TOWNSHIP

ROLL 23 IMAGE 8

ROLL 23 IMAGE 9



SCHEDULE OF SIDINGS AND CROSSOVERS

Side Track Number	Location	Class	Length June 30, 1916	Total	Remarks
	Prairie Twp.		R.R. Co. Private		
4					See Preceding Map.
6		Y	400'	400'	
8		Y	205'	205'	
5		P	5162'	5162'	
7					See Following Map. Built 6-30-16
11		I	154	315	469

Correct as of Dec 31, 1917 No Revision  
 Correct as of June 30, 1917 No Revision  
 Correct as of June 30, 1916 Map Revised  
 Correct as of June 30, 1915 No Revision  
 Correct as of June 30, 1914 No Revision  
 Correct as of June 30, 1913 No Revision  
 Correct as of June 30, 1912 No Revision  
 Correct as of June 30, 1911 No Revision  
 Correct as of June 30, 1910 No Revision  
 Correct as of June 30, 1909 No Revision  
 Correct as of June 30, 1908 No Revision  
 Correct as of June 30, 1907 Map Revised

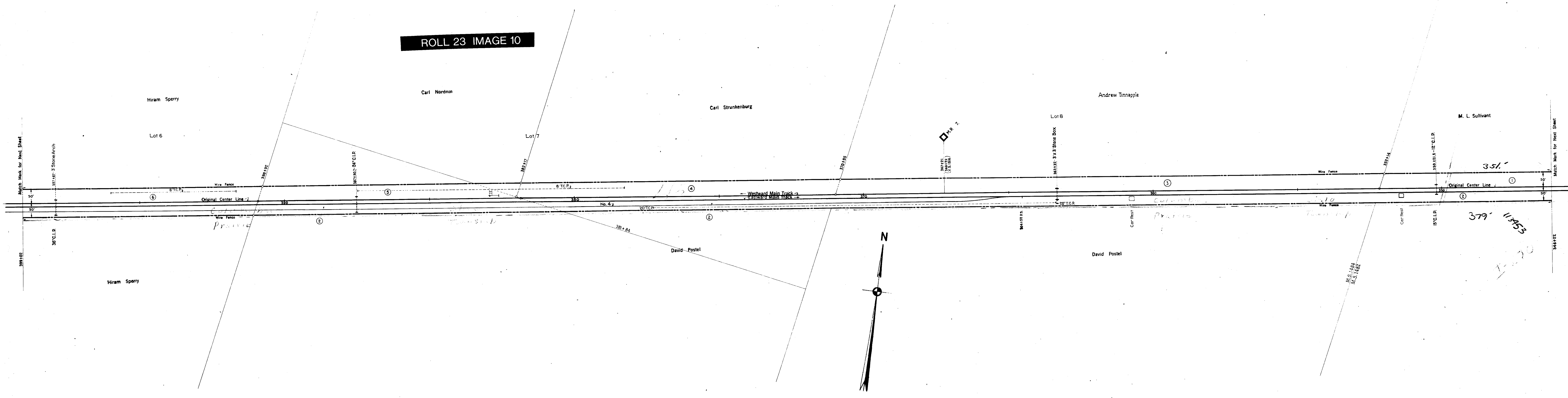
Sheet No. 6 V. 6 Ohio, of Columbus and Xenia Railroad, from  
 Survey Station 399+02 to Survey Station 451+82

Chief Draftsman

RIGHT OF WAY AND TRACK MAP  
 COLUMBUS & XENIA RAILROAD  
 OPERATED BY  
**THE PITTSBURGH, CINCINNATI, CHICAGO & ST. LOUIS RY. CO.**  
 CINCINNATI DIVISION  
 STATION 399+02 TO STATION 451+82  
 SCALE: 1 IN. = 100 FT. JUNE 30, 1916  
 OFFICE OF VALUATION ENGINEER  
 PITTSBURGH, PA.

FRANKLIN COUNTY, OHIO  
PRAIRIE TOWNSHIP

ROLL 23 IMAGE 10



SCHEDULE OF SIDINGS AND CROSSOVERS

Side Track Number	Location	Class	Length June 30, 1917	Total	Remarks
4	Prairie Twp	P	5777	5777	

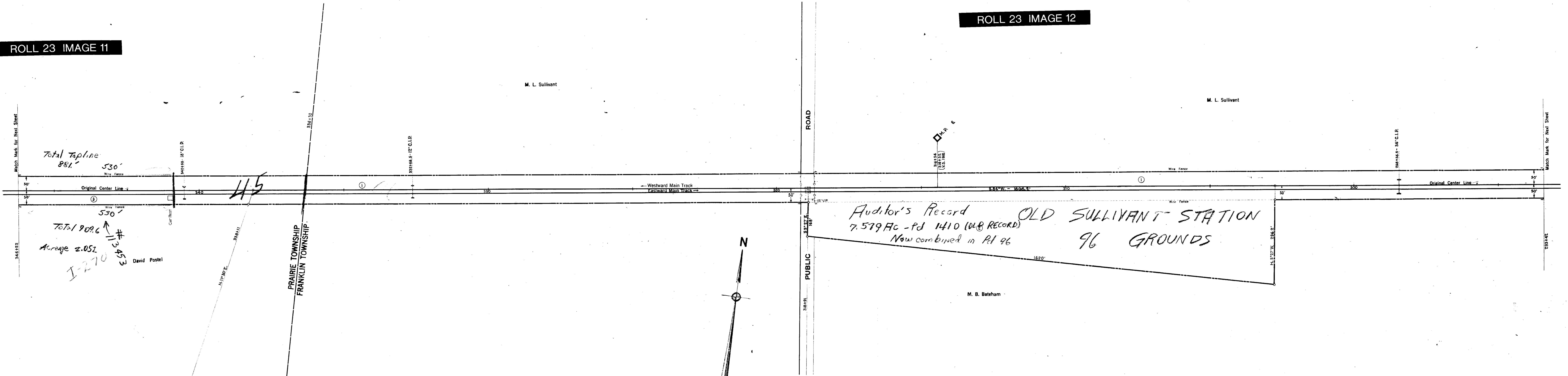
Correct as of Dec 31, 1917 No Revision  
 Correct as of June 30, 1917 No Revision  
 Correct as of June 30, 1916 No Revision  
 Correct as of June 30, 1915 No Revision  
 Correct as of June 30, 1914 No Revision  
 Correct as of June 30, 1913 No Revision  
 Correct as of June 30, 1912 No Revision  
 Correct as of June 30, 1911 No Revision  
 Correct as of June 30, 1910 No Revision  
 Correct as of June 30, 1909 No Revision  
 Correct as of June 30, 1908 No Revision

Sheet No. 5 V. 6 Ohio, of Columbus and Xenia Railroad, from  
 Survey Station 246+22 to Survey Station 399+02

RIGHT OF WAY AND TRACK MAP  
 COLUMBUS & XENIA RAILROAD  
 OPERATED BY  
 THE PITTSBURGH, CINCINNATI, CHICAGO & ST. LOUIS RY. CO.  
 CINCINNATI DIVISION  
 STATION 346+22 TO STATION 399+02  
 SCALE: 1 IN. = 100 FT. JUNE 30, 1916  
 OFFICE OF VALUATION ENGINEER  
 PITTSBURGH, PA.

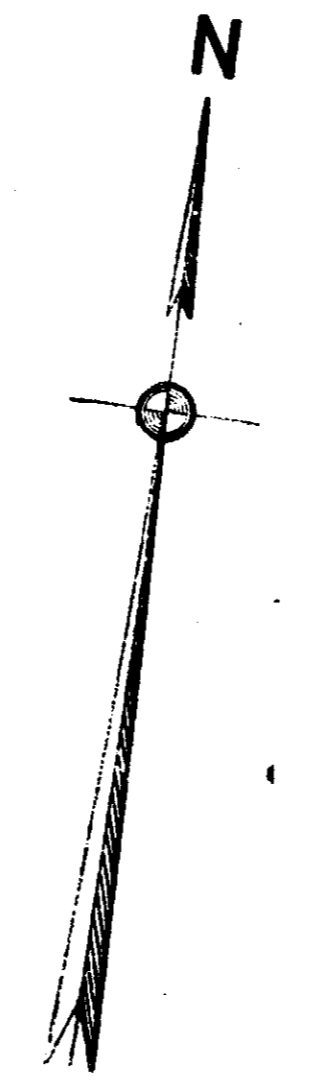
ROLL 23 IMAGE 11

ROLL 23 IMAGE 12



Total Topline 881' 530'  
 Total 909.6  
 Acreage 2.052  
 # 13453  
 I-270  
 David Postel

Auditor's Record  
 7.579 Ac - Pd 1410 (OLB RECORD)  
 Now combined in Pl 96  
 OLD SULLIVANT STATION  
 96 GROUNDS



Correct as of Dec 31 1927	No Revision
Correct as of June 30 1927	No Revision
Correct as of June 30 1926	No Revision
Correct as of June 30 1925	No Revision
Correct as of June 30 1924	No Revision
Correct as of June 30 1923	No Revision
Correct as of June 30 1922	No Revision
Correct as of June 30 1921	No Revision
Correct as of June 30 1919	No Revision
Correct as of June 30 1918	No Revision
Correct as of June 30 1917	No Revision

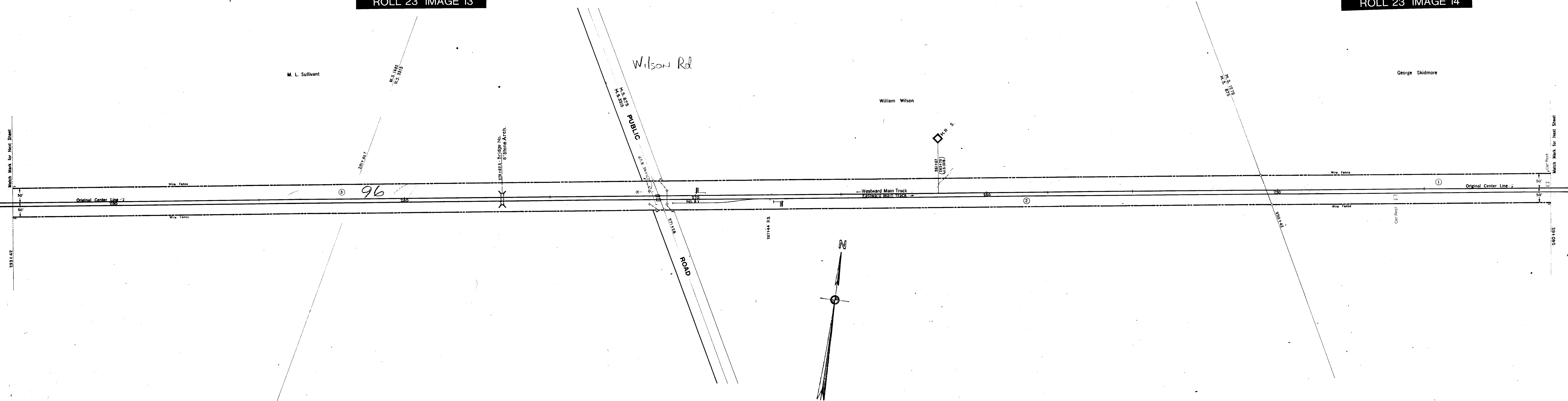
Sheet No. 4 V. 6 Ohio, of Columbus and Xenia Railroad, from  
 Survey Station 293+42 to Survey Station 346+22  
 Chief Draftsman

RIGHT OF WAY AND TRACK MAP  
 COLUMBUS & XENIA RAILROAD  
 OPERATED BY  
 THE PITTSBURGH, CINCINNATI, CHICAGO & ST. LOUIS RY. CO.  
 CINCINNATI DIVISION  
 STATION 293+42 TO STATION 346+22  
 SCALE: 1 IN. = 100 FT. JUNE 30, 1916  
 OFFICE OF VALUATION ENGINEER  
 PITTSBURGH, PA.

FRANKLIN COUNTY, OHIO  
FRANKLIN TOWNSHIP

ROLL 23 IMAGE 13

ROLL 23 IMAGE 14



**SCHEDULE OF SIDINGS AND CROSSOVERS**

Side Track Number	Location	Class	Length June 30, 1916	Remarks
2	Franklin Township	B	336'	

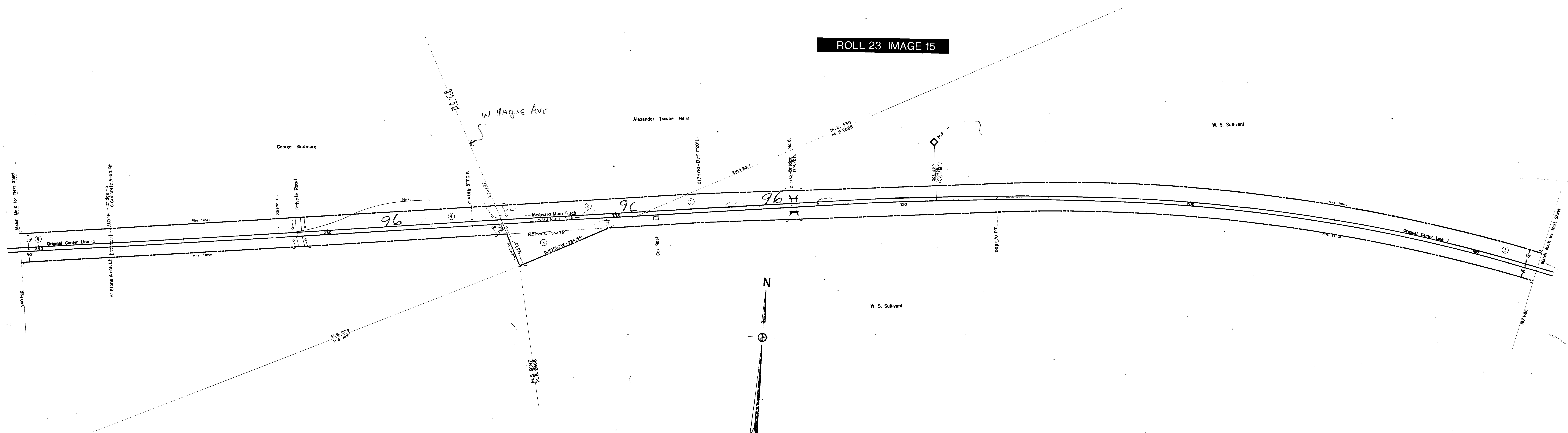
Correct as of Dec. 31, 1927 No Revision  
 Correct as of June 30, 1927 Map Revised  
 Correct as of June 30, 1928 No Revision  
 Correct as of June 30, 1925 No Revision  
 Correct as of June 30, 1924 No Revision  
 Correct as of June 30, 1923 No Revision  
 Correct as of June 30, 1922 No Revision  
 Correct as of June 30, 1921 No Revision  
 Correct as of June 30, 1920 No Revision  
 Correct as of June 30, 1919 No Revision  
 Correct as of June 30, 1918 No Revision  
 Correct as of June 30, 1917 No Revision

Sheet No. 3 V. 6 Ohio, of Columbus and Xenia Railroad, from  
 Survey Station 240+62 to Survey Station 293+42

RIGHT OF WAY AND TRACK MAP  
 COLUMBUS & XENIA RAILROAD  
 OPERATED BY  
**THE PITTSBURGH, CINCINNATI, CHICAGO & ST. LOUIS RY. CO.**  
 CINCINNATI DIVISION  
 STATION 240+62 TO STATION 293+42  
 SCALE: 1" = 100 FT. JUNE 30, 1916  
 OFFICE OF VALUATION ENGINEER  
 PITTSBURGH, PA.

FRANKLIN COUNTY, OHIO  
FRANKLIN TOWNSHIP

ROLL 23 IMAGE 15



SCHEDULE OF SIDINGS AND CROSSOVERS

Siding Number	Location	Class	Length June 30, 1916	Total	Remarks
1	Franklin Township	B	26.7	26.6	Added 6-30-24

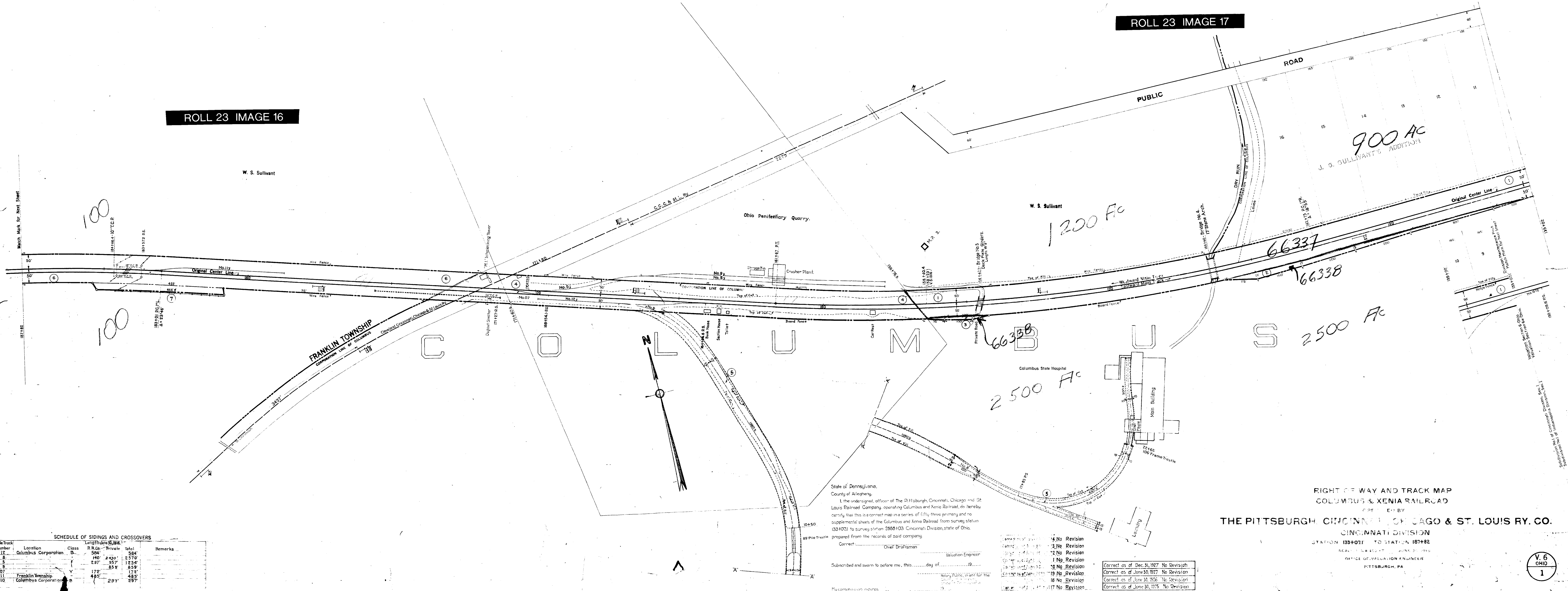
Correct as of Dec 31, 1917	No Revision
Correct as of June 30, 1917	No Revision
Correct as of June 30, 1916	No Revision
Correct as of June 30, 1915	No Revision
Correct as of June 30, 1914	Map Revised
Correct as of June 30, 1913	No Revision
Correct as of June 30, 1912	No Revision
Correct as of June 30, 1911	No Revision
Correct as of June 30, 1910	No Revision
Correct as of June 30, 1909	No Revision
Correct as of June 30, 1908	No Revision
Correct as of June 30, 1907	No Revision

Sheet No. 2 V. 6 Ohio, of Columbus and Xenia Railroad, from Survey Station 187+82 to Survey Station 240+62

RIGHT OF WAY AND TRACK MAP  
COLUMBUS & XENIA RAILROAD  
OPERATED BY  
**THE PITTSBURGH, CINCINNATI, CHICAGO & ST. LOUIS RY. CO.**  
CINCINNATI DIVISION  
STATION 187+82 TO STATION 240+62  
SCALE: 1 IN. = 100 FT. JUNE 30, 1916  
OFFICE OF VALUATION ENGINEER  
PITTSBURGH, PA.

ROLL 23 IMAGE 17

ROLL 23 IMAGE 16



**SCHEDULE OF SIDINGS AND CROSSOVERS**

Side Track Number	Location	Class	R.R. Co.	Private	Total	Remarks
12	Columbus Corporation	B	584'		584'	
8		F	140'	2430'	2570'	
5		F	237'	957'	1194'	
9		F	172'	859'	1031'	
07		F	172'	172'	344'	
11	Franklin Township	B	485'		485'	
10	Columbus Corporation	B	297'		297'	

State of Pennsylvania,  
County of Allegheny,  
I, the undersigned, officer of the Pittsburgh, Cincinnati, Chicago and St. Louis Railroad Company, operating Columbus and Xenia Railroad, do hereby certify that this is a correct map in a series of fifty-three primary and no supplemental sheets, of the Columbus and Xenia Railroad, from survey station 1334071 to survey station 2888103, Cincinnati Division, State of Ohio, prepared from the records of said company.

Subscribed and sworn to before me, this \_\_\_\_\_ day of \_\_\_\_\_, 1919.  
My commission expires \_\_\_\_\_

14	No Revision
13	No Revision
12	No Revision
11	No Revision
10	No Revision
9	No Revision
8	No Revision
7	No Revision
6	No Revision
5	No Revision
4	No Revision
3	No Revision
2	No Revision
1	No Revision

Correct as of Dec. 31, 1927 No Revision  
Correct as of June 30, 1927 No Revision  
Correct as of June 30, 1926 No Revision  
Correct as of June 30, 1925 No Revision

**RIGHT OF WAY AND TRACK MAP**  
**COLUMBUS & XENIA RAILROAD**  
PREPARED BY  
**THE PITTSBURGH, CINCINNATI, CHICAGO & ST. LOUIS RY. CO.**  
CINCINNATI DIVISION  
STATION 1334071 TO STATION 187482  
SCALE: 1" = 100 FT.  
OFFICE OF VALUATION ENGINEER  
PITTSBURGH, PA.

FRANKLIN COUNTY, OHIO

ROLL 23 IMAGE 18



GRANDVIEW AVE.

SCIOTO RIVER

Toledo & Ohio Central Railway

Toledo & Ohio Central Railway

Toledo & Ohio Central Railway

Toledo & Ohio Central Railway

JOHN ST.

MEEK AVE.

ADDITION

900

W.S. SULLIVAN'S ESTATE  
657 AC.  
1200

T.S. GAYNES SUBDIVISION

MCKINLEY

PRINCETON AVE.

CHICAGO AVE.

AVENUE

C. L. BURGESS SUB.

66337

2000

66337

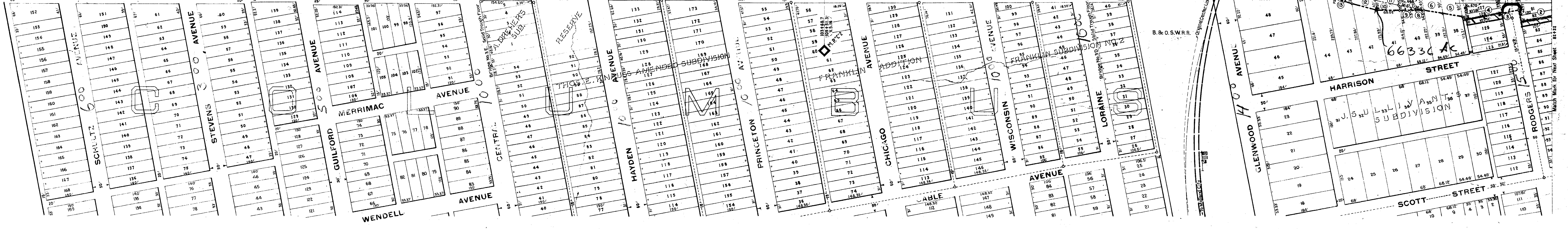
66337

66335

For continuation of this track see sketch below

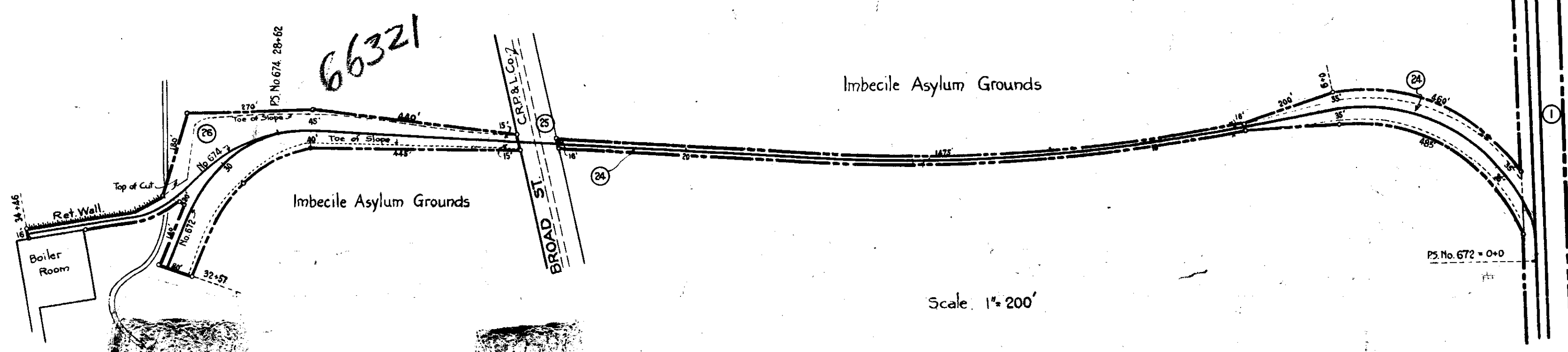
State of Ohio  
Hospital for the Insane

2500



SCHEDULE OF SIDINGS AND CROSSOVERS

Side Track Number	Location	Class	Length - June 30, 1917	Private	Total	Remarks
6.5.5	Columbus Corporation					See Map No. 2
6.5.6						
6.5.7						
6.5.8						
6.5.9						
6.5.10						
6.5.11						
6.5.12						
6.5.13						
6.5.14						
6.5.15						
6.5.16						
6.5.17						
6.5.18						
6.5.19						
6.5.20						
6.5.21						
6.5.22						
6.5.23						
6.5.24						
6.5.25						
6.5.26						
6.5.27						
6.5.28						
6.5.29						
6.5.30						
6.5.31						
6.5.32						
6.5.33						
6.5.34						
6.5.35						
6.5.36						
6.5.37						
6.5.38						
6.5.39						
6.5.40						
6.5.41						
6.5.42						
6.5.43						
6.5.44						
6.5.45						
6.5.46						
6.5.47						
6.5.48						
6.5.49						
6.5.50						
6.5.51						
6.5.52						
6.5.53						
6.5.54						
6.5.55						
6.5.56						
6.5.57						
6.5.58						
6.5.59						
6.5.60						
6.5.61						
6.5.62						
6.5.63						
6.5.64						
6.5.65						
6.5.66						
6.5.67						
6.5.68						
6.5.69						
6.5.70						
6.5.71						
6.5.72						
6.5.73						
6.5.74						
6.5.75						
6.5.76						
6.5.77						
6.5.78						
6.5.79						
6.5.80						
6.5.81						
6.5.82						
6.5.83						
6.5.84						
6.5.85						
6.5.86						
6.5.87						
6.5.88						
6.5.89						
6.5.90						
6.5.91						
6.5.92						
6.5.93						
6.5.94						
6.5.95						
6.5.96						
6.5.97						
6.5.98						
6.5.99						
6.5.100						



- Correct as of Dec. 31, 1917 No Revision
- Correct as of June 30, 1917 No Revision
- Correct as of June 30, 1916 No Revision
- Correct as of June 30, 1915 No Revision
- Correct as of June 30, 1914 No Revision
- Correct as of June 30, 1913 No Revision
- Correct as of June 30, 1912 No Revision
- Correct as of June 30, 1911 No Revision
- Correct as of June 30, 1910 No Revision
- Correct as of June 30, 1909 No Revision
- Correct as of June 30, 1908 No Revision
- Correct as of June 30, 1907 No Revision

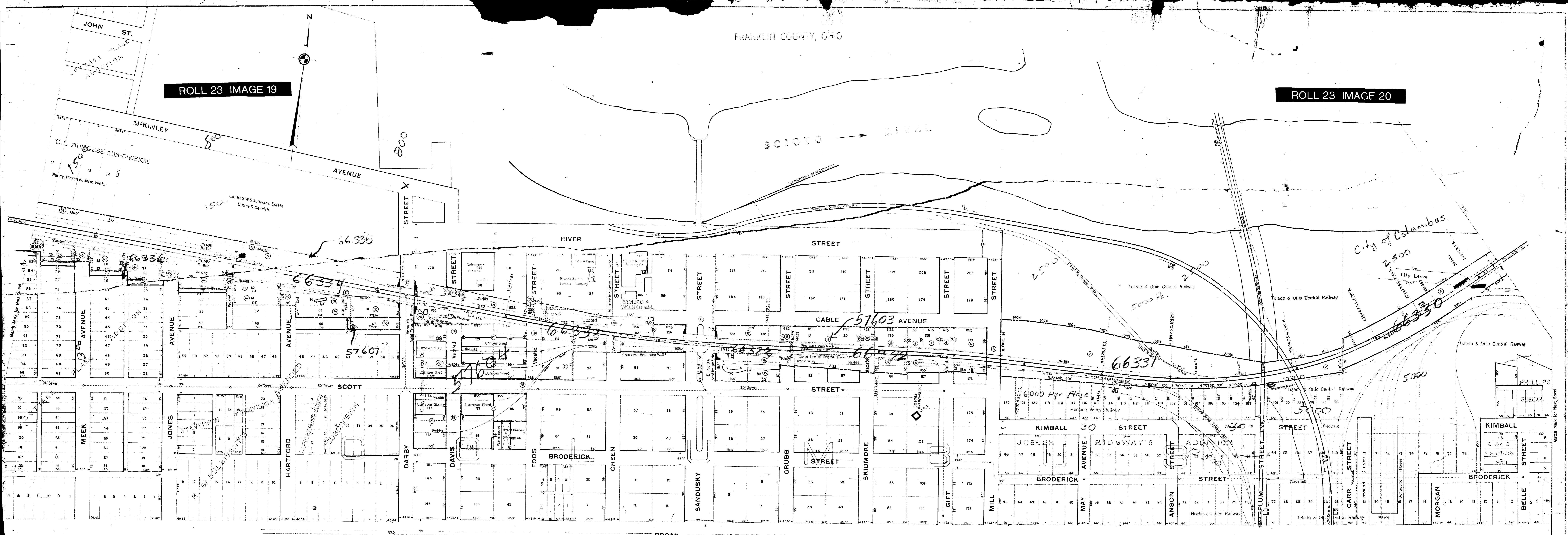
Sheet No. 3 V. 6 a Ohio, of the Columbus and Xenia Railroad, from Survey Station 82+22 to Survey Station 133+07.1

RIGHT OF WAY AND TRACK MAP  
COLUMBUS AND XENIA RAILROAD  
OPERATED BY  
**THE PITTSBURGH, CINCINNATI, CHICAGO & ST. LOUIS RY. CO.**  
CINCINNATI DIVISION  
STATION 82+22 TO STATION 133+07.1  
SCALE: 1 IN. = 100 FT. JUNE 30, 1916  
OFFICE OF VALUATION ENGINEER  
PITTSBURGH, PA.

V. 6 a OHIO 3

ROLL 23 IMAGE 19

ROLL 23 IMAGE 20

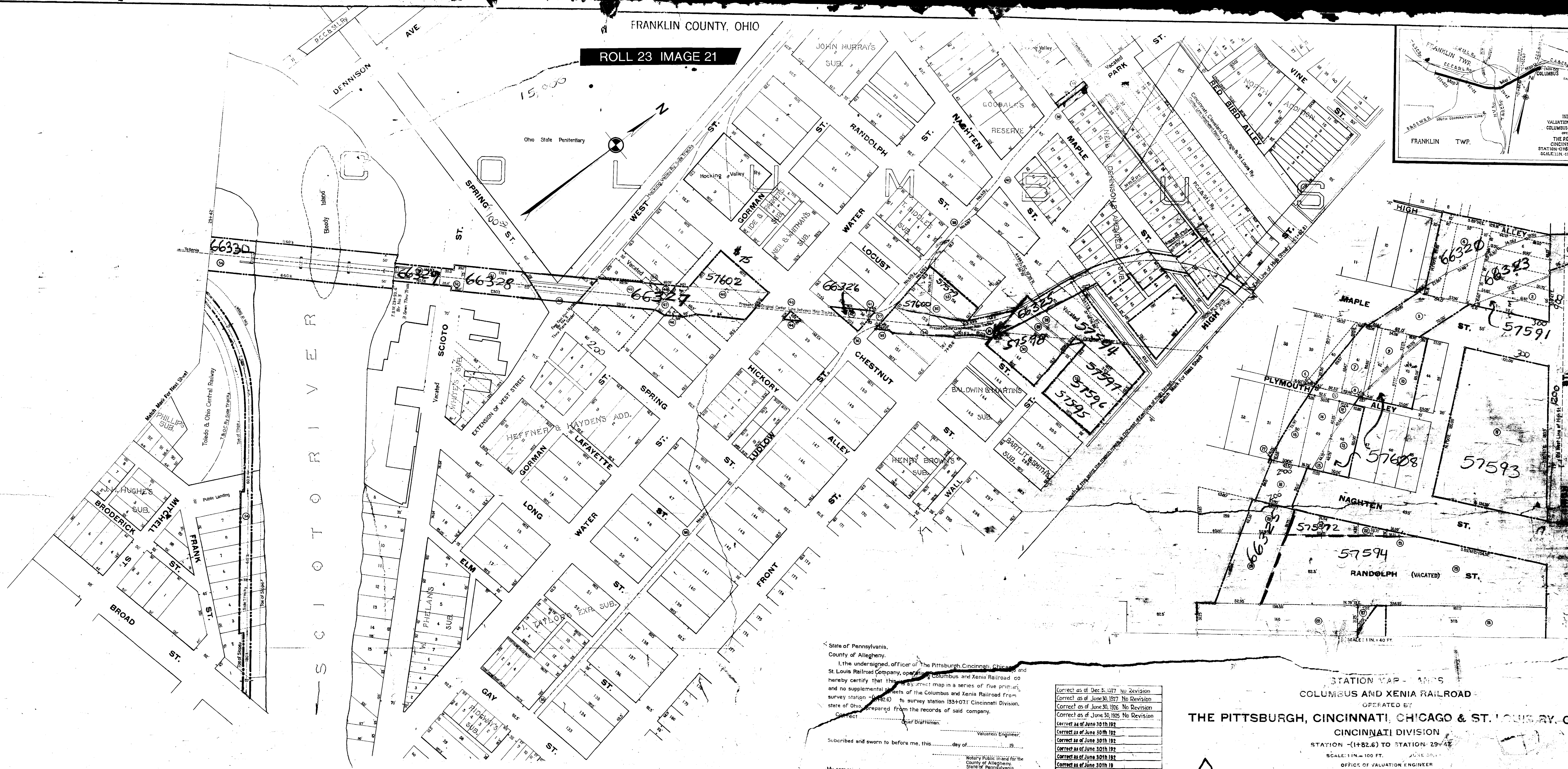
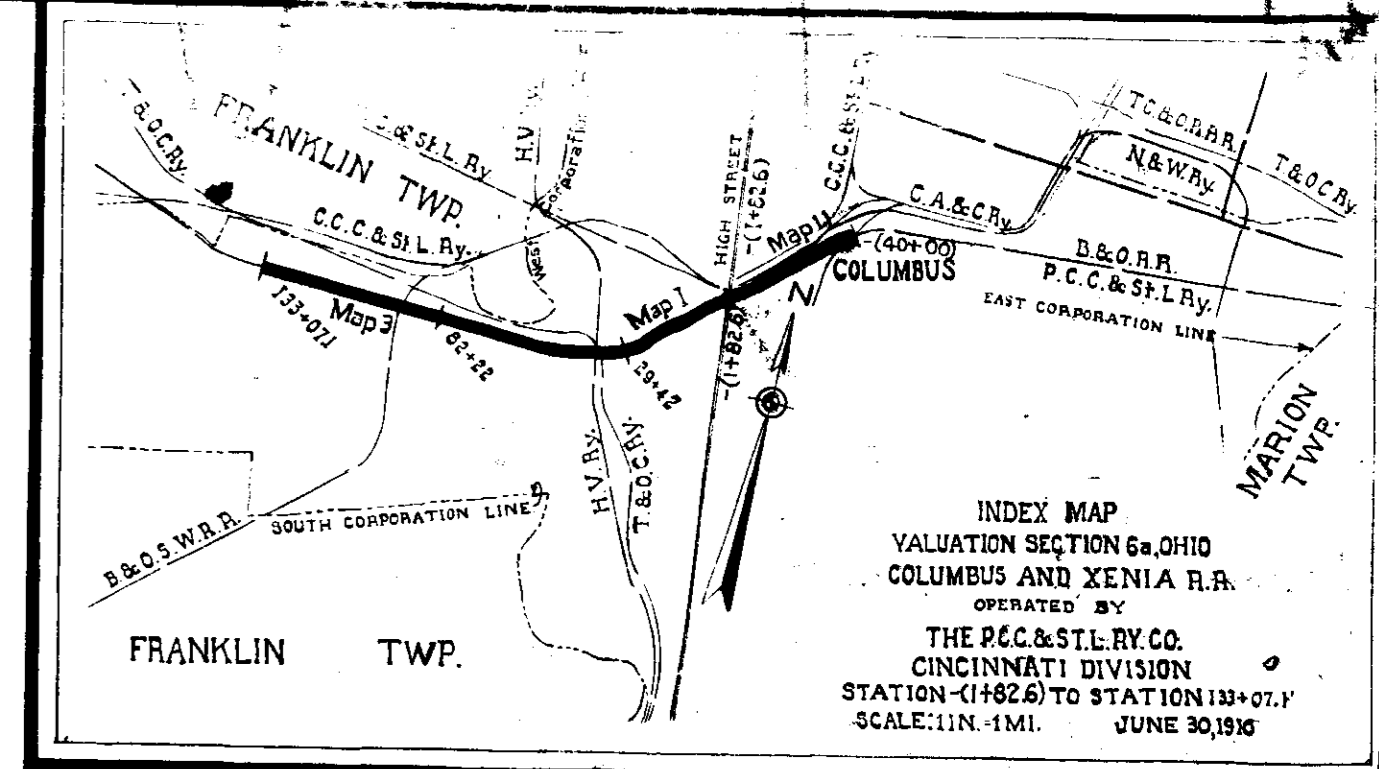


SCHEDULE OF STIMES AND CROSSOVER

Side Trk Number	Location	Class	Length June 30, 1916	Private	Total	Remarks
6.34	Columbus Corp.	Y	207		207	See Map Not
6.43			177		177	
6.44			107		107	
6.45			369		369	
6.46			395		395	
6.51			4746		4746	
6.52			4423		4423	
6.54			574		574	
6.55			1583		1583	
6.56			652		652	
6.58			596		596	
6.59			874		874	
6.60		Y	1829		1829	
6.62			176		176	
6.64			589		589	
6.65			1635		1635	
6.70			331		331	
6.66		B	922		922	

- Corrected as of June 30th 1925. No Revision
- Corrected as of June 30th 1924. No Revision
- Corrected as of June 30th 1923. No Revision
- Corrected as of June 30th 1922. No Revision
- Corrected as of June 30th 1921. Map Revised
- Corrected as of June 30th 1920. No Revision
- Corrected as of June 30th 1919. Map Revised
- Corrected as of June 30th 1918. No Revision
- Corrected as of June 30th 1917. No Revision
- Correct as of Dec. 31, 1917. Map Revised
- Correct as of June 30, 1917. No Revision
- Correct as of June 30, 1916. No Revision

RIGHT OF WAY AND TRACK MAP  
 COLUMBUS AND XENIA RAILROAD  
 OPERATED BY  
**THE PITTSBURGH, CINCINNATI, CHICAGO & ST. LOUIS RY. CO.**  
 CINCINNATI DIVISION  
 STATION 29+42 TO STATION 82+22  
 SCALE 1" = 100 FT. JUNE 30, 1916  
 OFFICE OF VALUATION ENGINEER  
 PITTSBURGH, PA.



State of Pennsylvania,  
County of Allegheny,  
I, the undersigned, officer of the Pittsburgh, Cincinnati, Chicago and St. Louis Railroad Company, operating the Columbus and Xenia Railroad do hereby certify that this is a correct map in a series of five primary and no supplemental sheets of the Columbus and Xenia Railroad from survey station 1482.6 to survey station 133+071 Cincinnati Division, State of Ohio, prepared from the records of said company.  
Correct \_\_\_\_\_  
Notary Public, in and for the County of Allegheny, State of Pennsylvania.

Correct as of Dec 31, 1917	No Revision
Correct as of June 30, 1917	No Revision
Correct as of June 30, 1916	No Revision
Correct as of June 30, 1915	No Revision
Correct as of June 30, 1914	No Revision
Correct as of June 30, 1913	No Revision
Correct as of June 30, 1912	No Revision
Correct as of June 30, 1911	No Revision
Correct as of June 30, 1910	No Revision
Correct as of June 30, 1909	No Revision
Correct as of June 30, 1908	No Revision
Correct as of June 30, 1907	No Revision
Correct as of June 30, 1906	No Revision
Correct as of June 30, 1905	No Revision
Correct as of June 30, 1904	No Revision
Correct as of June 30, 1903	No Revision
Correct as of June 30, 1902	No Revision
Correct as of June 30, 1901	No Revision
Correct as of June 30, 1900	No Revision

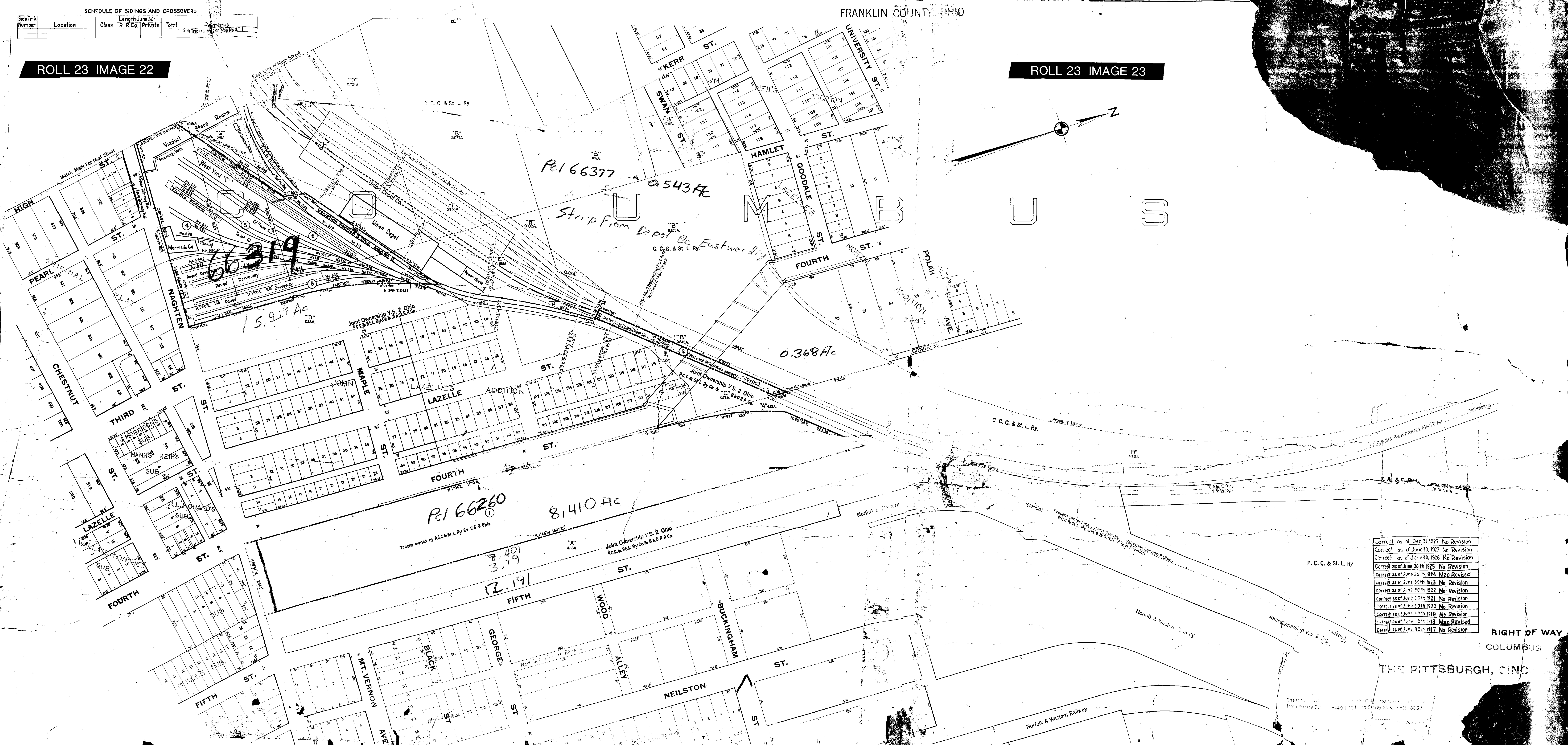
STATION MAP - MAINS  
COLUMBUS AND XENIA RAILROAD  
OPERATED BY  
THE PITTSBURGH, CINCINNATI, CHICAGO & ST. LOUIS RY. CO.  
CINCINNATI DIVISION  
STATION - (1482.6) TO STATION 29+42  
SCALE: 1 IN. = 100 FT. JUNE 30, 1922  
OFFICE OF VALUATION ENGINEER  
PITTSBURGH, PA.

SCHEDULE OF SIDINGS AND CROSSOVERS

Side Track Number	Location	Class	Length June 30	Remarks
		R.R.Co.	Private	Total
				Side Track Length
				Remarks

ROLL 23 IMAGE 22

ROLL 23 IMAGE 23



Correct as of Dec. 31, 1917	No Revision
Correct as of June 30, 1917	No Revision
Correct as of June 30, 1916	No Revision
Correct as of June 30, 1915	No Revision
Correct as of June 30, 1914	Map Revised
Correct as of June 30, 1913	No Revision
Correct as of June 30, 1912	No Revision
Correct as of June 30, 1911	No Revision
Correct as of June 30, 1910	No Revision
Correct as of June 30, 1909	No Revision
Correct as of June 30, 1908	Map Revised
Correct as of June 30, 1907	No Revision

RIGHT OF WAY  
COLUMBUS

THE PITTSBURGH, CINC

Sheet No. 11  
From Survey of 1907-1917