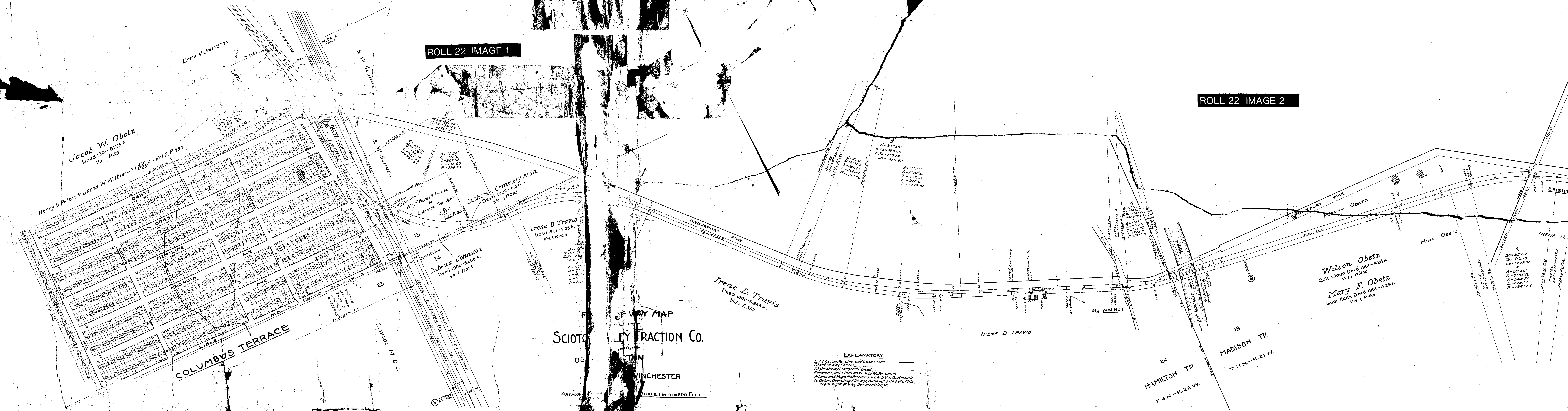


ROLL 22 IMAGE 1

ROLL 22 IMAGE 2



Jacob W. Obetz
Deed 1901-8175 A.
Vol. 1, P. 59

Henry B. Peters to Jacob W. Wilbur-77
466 A.-Vol. 2, P. 590

Lutheran Cemetery Assn.
Deed 1906-0041 A.
Vol. 1, P. 393

Irene D. Travis
Deed 1901-205 A.
Vol. 1, P. 396

Rebecca Johnston
Deed 1902-5206 A.
Vol. 1, P. 395

Irene D. Travis
Deed 1901-6243 A.
Vol. 1, P. 397

Wilson Obetz
Quit Claim Deed 1901-424 A.
Vol. 1, P. 400

Mary F. Obetz
Guardian's Deed 1901-424 A.
Vol. 1, P. 401

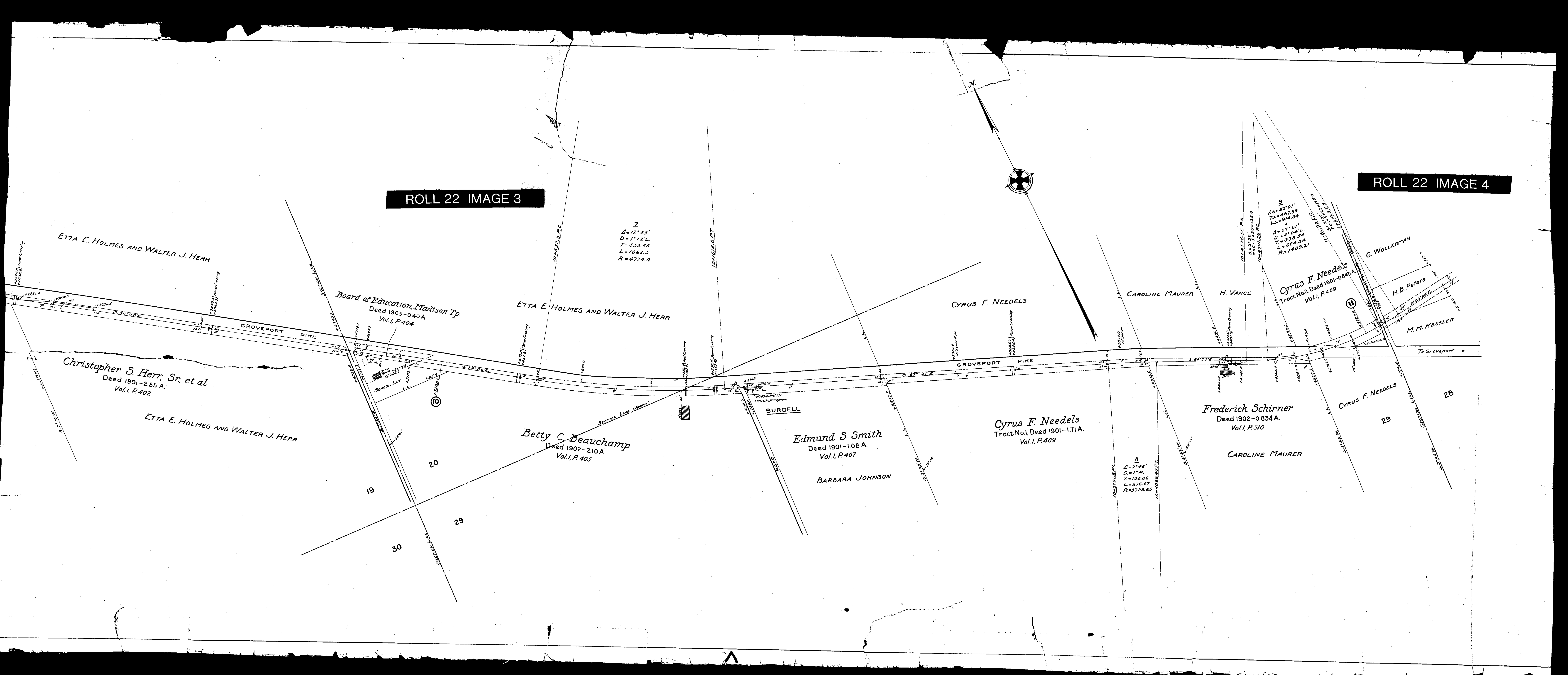
OF WAY MAP
OF THE
SCIOTO OIL & GAS TRACT
LEY TRACTION CO.
OB
WINCHESTER

EXPLANATORY
S.V.T. Co. Center Line and Land Lines.....
Right of Way Fences.....
Right of Way Lines Not Fenced.....
Former Land Lines and Canal Water Lines.....
Volume and Page References are to S.V.T. Co. Records
To Obtain Operating Mileage Subtract 0.445 of a Mile
from Right of Way Survey Mileage.

SCALE 1 INCH = 200 FEET.

ROLL 22 IMAGE 3

ROLL 22 IMAGE 4



7
 $\Delta = 12^{\circ} 45'$
 $D = 1^{\circ} 12' L$
 $T = 333.46$
 $L = 1062.5$
 $R = 4774.4$

9
 $\Delta = 32^{\circ} 01'$
 $T = 467.99$
 $L = 314.34$
 $D = 27^{\circ} 01'$
 $T = 338.54$
 $L = 664.34$
 $R = 1409.21$

8
 $\Delta = 2^{\circ} 46'$
 $D = 1^{\circ} R$
 $T = 132.36$
 $L = 276.67$
 $R = 3729.65$

ETTA E. HOLMES AND WALTER J. HERR

Board of Education, Madison Tp.
 Deed 1903-040 A.
 Vol. 1, P. 404

ETTA E. HOLMES AND WALTER J. HERR

CYRUS F. NEEDELS

CAROLINE MAURER

H. VANCE

Cyrus F. Needels
 Tract No. 2, Deed 1901-0849A
 Vol. 1, P. 409

G. WOLLERMAN

H. B. PETERS

M. M. KESSLER

Christopher S. Herr, Sr. et al.
 Deed 1901-2.85 A.
 Vol. 1, P. 402

ETTA E. HOLMES AND WALTER J. HERR

Betty C. Beauchamp
 Deed 1902-2.10 A.
 Vol. 1, P. 405

BURDELL

Edmund S. Smith
 Deed 1901-1.08 A.
 Vol. 1, P. 407

BARBARA JOHNSON

Cyrus F. Needels
 Tract No. 1, Deed 1901-1.71 A.
 Vol. 1, P. 409

Frederick Schirner
 Deed 1902-0.834 A.
 Vol. 1, P. 510

CAROLINE MAURER

CYRUS F. NEEDELS

28

29

20

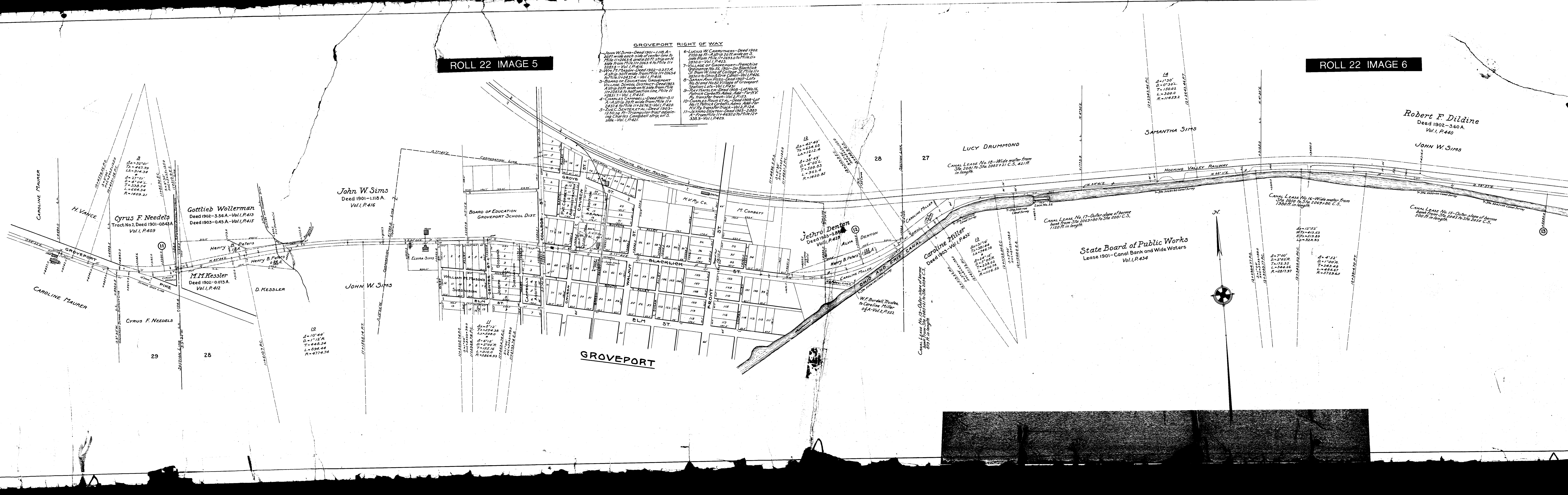
19

30

To Groveport

GROVEPORT RIGHT OF WAY

- 1-John W. Sims-Deed 1901-1.118 A-20 ft wide each side of center line to Mile 11+2063.4 and a 20 ft strip on N side from Mile 11+2063.4 to Mile 11+2237.1-Vol. 1, P.416.
- 2-Wm. F. Mason-Deed 1902-0.257 A-Strip 20 ft wide from Mile 11+2063.4 to Mile 11+2431.4-Vol. 1, P.416.
- 3-BOARD OF EDUCATION, GROVEPORT VILLAGE SCHOOL DISTRICT-Deed 1903 A strip 20 ft wide on N side from Mile 11+2207.0 to half section line, Mile 11+2531.7-Vol. 1, P.425.
- 4-CHARLES CAMPBELL-Deed 1901-0.11 A-Strip 20 ft wide from Mile 11+2431.4 to Mile 11+2676.5-Vol. 1, P.420.
- 5-ZUC C. SENTER, ET AL-Deed 1903-1.230.08 ft. Transferror tract adjoining Charles Campbell strip, on S side-Vol. 1, P.421.
- 6-LUCIUS W. CARRINGTONS-Deed 1902 2350.36 ft. Strip 20 ft wide on S side from Mile 11+2633.0 to Mile 11+2833.0-Vol. 1, P.423.
- 7-VILLAGE OF GROVEPORT- Franchise Ordinance No. 36, 1901-On Blacklick St. from W. line of College St. Mile 11+2633.0 to Ohio & Erie Canal-Vol. 1, P.426.
- 8-SARAH ANN FLEISS-Deed 1892-Lots No. 6 and No. 02, Village of Groveport, Station Lots-Vol. 1, P.431.
- 9-SAY HAMILTON-Deed 1909-Lot No. 6, Patrick Corbett's Adm. Adm. For H.V. By transfer tract-Vol. 2, P.123.
- 10-CHARLES ROUN ET AL-Deed 1903-Lot No. 17, Patrick Corbett's Adm. Adm. For H.V. By transfer tract-Vol. 2, P.124.
- 11-UTTERO DENTON-Deed 1903-2.093 A-From Mile 11+4637.0 to Mile 12+330.3-Vol. 1, P.429.



John W. Sims
Deed 1901-1.118 A.
Vol. 1, P.416

Gottlieb Wollerman
Deed 1902-3.56 A-Vol. 1, P.413
Deed 1903-0.45 A-Vol. 1, P.415

Cyrus F. Needels
Tract No. 2, Deed 1901-0.843 A
Vol. 1, P.409

M.M. Kessler
Deed 1902-0.075 A.
Vol. 1, P.412

JOHN W. SIMS

Jethro Denton
Deed 1903-2.093 A
Vol. 1, P.429

Caroline Miller
Deed 1903-Vol. 1, P.432

State Board of Public Works
Lease 1901-Canal Bank and Wide Waters
Vol. 1, P.434

Robert F. Dildine
Deed 1902-3.60 A.
Vol. 1, P.440

JOHN W. SIMS

GROVEPORT



29

28

28

27

15

10
 $\Delta = 10' 44"$
 $D = 1' 12" R$
 $T = 440.54$
 $L = 894.44$
 $R = 4774.74$

11
 $\Delta = 0' 12"$
 $T = 254.36$
 $L = 508.0$
 $R = 2540.0$

12
 $\Delta = 43' 49"$
 $T = 634.60$
 $L = 1212.4$
 $R = 1420.63$

13
 $\Delta = 3' 10"$
 $T = 331.44$
 $L = 662.88$
 $R = 3314.4$

14
 $\Delta = 1' 30"$
 $D = 0' 30" L$
 $T = 150.02$
 $L = 300.0$
 $R = 1143.2$

15
 $\Delta = 12' 52"$
 $T = 413.63$
 $L = 827.26$
 $R = 3229.83$

16
 $\Delta = 7' 00"$
 $D = 2' 00" R$
 $T = 72.35$
 $L = 344.26$
 $R = 2077.97$

17
 $\Delta = 4' 52"$
 $D = 1' 00" R$
 $T = 243.48$
 $L = 486.96$
 $R = 3729.63$

