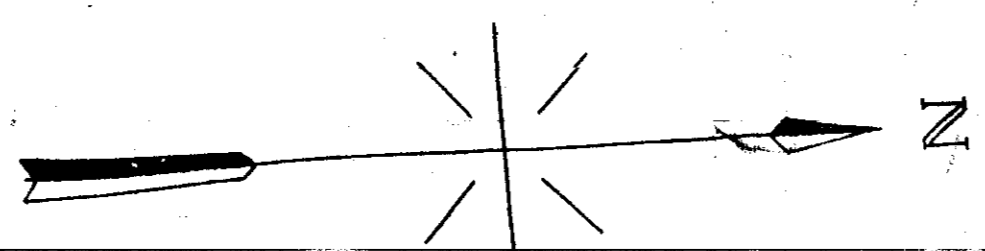
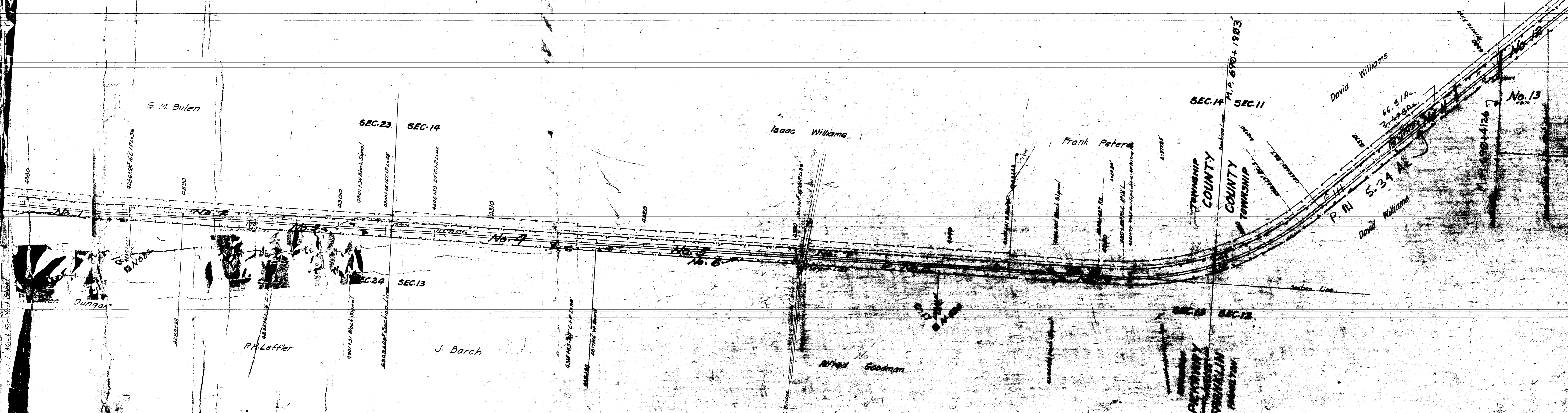


Additions		Retirements	
No.	Particulars	No.	Particulars
1	1887	1	1887
2	1887	2	1887
3	1887	3	1887
4	1887	4	1887
5	1887	5	1887
6	1887	6	1887
7	1887	7	1887
8	1887	8	1887
9	1887	9	1887
10	1887	10	1887
11	1887	11	1887
12	1887	12	1887
13	1887	13	1887
14	1887	14	1887
15	1887	15	1887

No.	Grantor	Grantee	Instrument	Date	Record	Cost No.	Remarks
1	Elizabeth Musselman	S V Ry Co	Deed	Feb 4, 1887	DB 56 543	631	
2	William Bulen and wife	Joe Robinson, Recvr	Deed	Oct 22, 1887	DB 60 16	6316	
3	Abraham Hudson and wife	S V Ry Co	Contract	Feb 4, 1887	DB 56 547	6310	
4	John D Miller	S V Ry Co	Contract	June 20, 1875	DB 54 192	6308	
5	Franklin Miller	S V Ry Co	Contract	Aug 30, 1875	DB 54 193	6307	
6	Frank S Baum, Administrator	S V & N E RR Co	Deed	June 23, 1890	DB 61 19	6306	
7	Estate of Isaac Miller	S V Ry Co	Contract	July 30, 1875	DB 54 193	6306	
8	John D Vause	S V Ry Co	Contract	Dec 30, 1889	DB 60 154	6304	
9	Mary A Harrison and Husband	Joe Robinson, Recvr	Deed	Dec 30, 1889	DB 60 154	6304	
10	John Weigand	S V Ry Co	Contract	June 25, 1875	DB 54 204	6302	
11	Eliza Shook	S V Ry Co	Contract	Aug 18, 1875	DB 54 174	6287	
12	Eliza Shook	S V Ry Co	Contract	Aug 18, 1875	DB 54 174	6287	
13	William Mospenny	S V Ry Co	Contract	Aug 2, 1875	DB 54 174	6286	
14	Louisa Wilkins and Husband	W & W Ry Co	Deed	Apr 23, 1909	DB 467 269	6266	
15	John Weigand	S V Ry Co	Contract	Apr 23, 1909	DB 467 269	6266	Deed of Release



ROLL 19 IMAGE 1

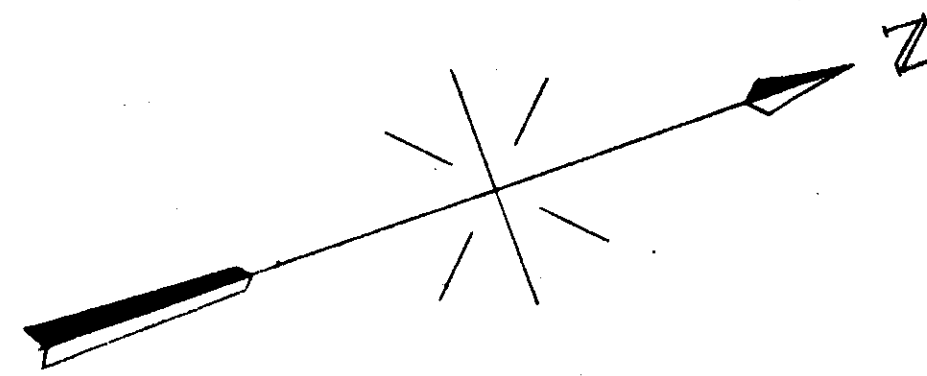


Sheet No. 50 of 60 sheets of Scioto District
 from survey station 4278 + 887 to survey station 4304 + 497

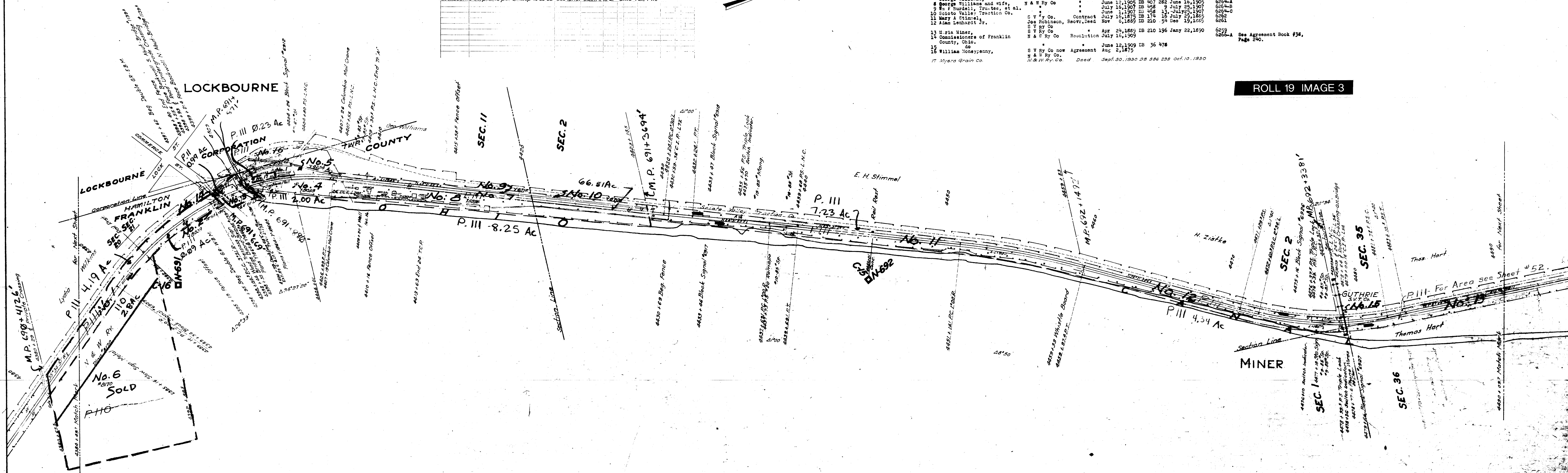
RIGHT-OF-WAY AND TRACK MAP
 NORFOLK AND WESTERN RY
 SCIOTO DISTRICT
 STATION 4278 TO STATION 4304 + 497
 SCALE 1" = 40'



Location	Character	Year	Additions		Retirements	
			A.P.R. No.	Comp. Report No.	A.P.R. No.	Comp. Report No.
Const. Team Track	R.R. No. 7601	1922	PA 5322	561 1 1922		
Change Grades 4133&4111	No. 7033	1922	PA 4760	430 2 1922		
Const. Laborers Dwellings, Etc.		1924	PA 5963	314 1 1924		
Extend Xovers - New Tr.		1924	PA 5828	752 2 1924		
Retire Section Dwelling N-63		1922	PA 4578	131 1 1922	PA 4568	561 2 1922
Change Grades 4133&4111	No. 7033	1922	PA 4760	430 2 1922		
Retire Tr. B-1-377		1922	PA 7746	135 1 1922		
Retire Crossing Sign		1922	PA 3467	253 1 1922		
Ext. Double 48' Conc. Culf.		1930	PA 7562	742 2 1930		



No.	Grantor	Grantee	Instrument	Date	Record	Cust. No.	Remarks
1	William Moneypenny,	S V Ry Co	Contract	Aug 2, 1875 DB		6266	
2	Delphine O'Hara Guardian of Frances O'Hara, et al.	N & W Ry Co.	Deed	Sept 23, 1909 DB	494 238 Sept 27, 1909	6265-B	
3	Peter Goulder and wife,	S V & W RR Co		Apr 24, 1890 DB	217 65 Sept 15, 1890	6265	
4	Delphine O'Hara Guardian of Frances O'Hara, et al.	N & W Ry Co		Sept 23, 1909 DB	494 238 Sept 27, 1909	6265-B	
5	E W O'Hara, et al			Feb 24, 1903 DB	365 65 Mar 13, 1903	6265-A	
6	Louise Wilkins and husband,			Apr 22, 1909 DB	467 269 May 17, 1909	6265-C	
7	John Waigand,			Apr 22, 1909 DB	467 269 May 17, 1909	6265-C	Release Deed
8	Isaac Williams, Guardian of George Williams,	S V Ry Co.		Sept 29, 1876 DB	174 19 July 29, 1885	6264	
9	George Williams and wife,	N & W Ry Co		June 12, 1909 DB	407 282 June 16, 1909	6264-A	
10	W F Burdell, Trustee, et al.			July 16, 1907 DB	458 9 July 25, 1907	6264-B	
11	Scioto Valley Fraction Co.			June 1, 1907 DB	458 13 July 25, 1907	6264-C	
12	Mary A Stimmel,	S V Ry Co.	Contract	July 16, 1875 DB	174 16 July 29, 1885	6262	
13	Adam Lenhardt Jr.	S V Ry Co	Reovr. Deed	Nov 5, 1889 DB	210 54 Dec 19, 1889	6261	
14	Maria Miner,	S V Ry Co		Apr 24, 1889 DB	210 196 Jan 22, 1890	6259	See Agreement Book #38, Page 240.
15	Commissioners of Franklin County, Ohio,	N & W Ry Co	Resolution	July 16, 1909		6260-A	
16	do			June 12, 1909 DB	36 478		
17	William Moneypenny,	S V Ry Co now N & W Ry Co.	Agreement	Aug 2, 1875			
18	Myers Grain Co.		Deed	Sept. 30, 1930 DB	586 238 Oct. 10, 1930		



Sheet No. 51 of 69 sheets of Scioto District
 from survey station 4384 + 497 to survey station 4490 + 1097.

RIGHT-OF-WAY AND TRACK MAP
 NORFOLK AND WESTERN RY.
 SCIOTO DISTRICT.
 STATION 4384 + 497 TO STATION 4490 + 1097
 SCALE 1/4" = 200 FT.

Office of Valuation Engineer
 Room 11 - East 10th St. Columbus, Ohio

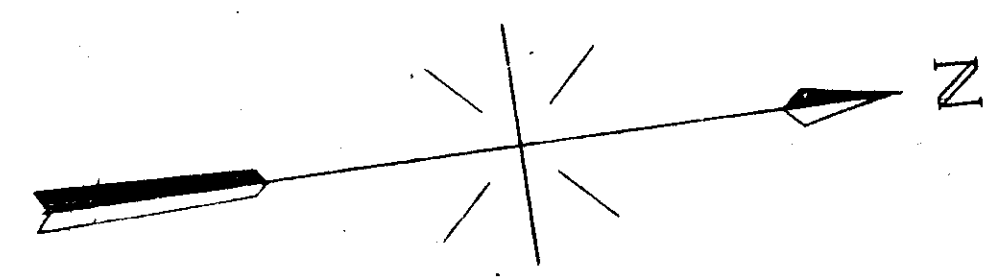


VALUATION ENGINEER

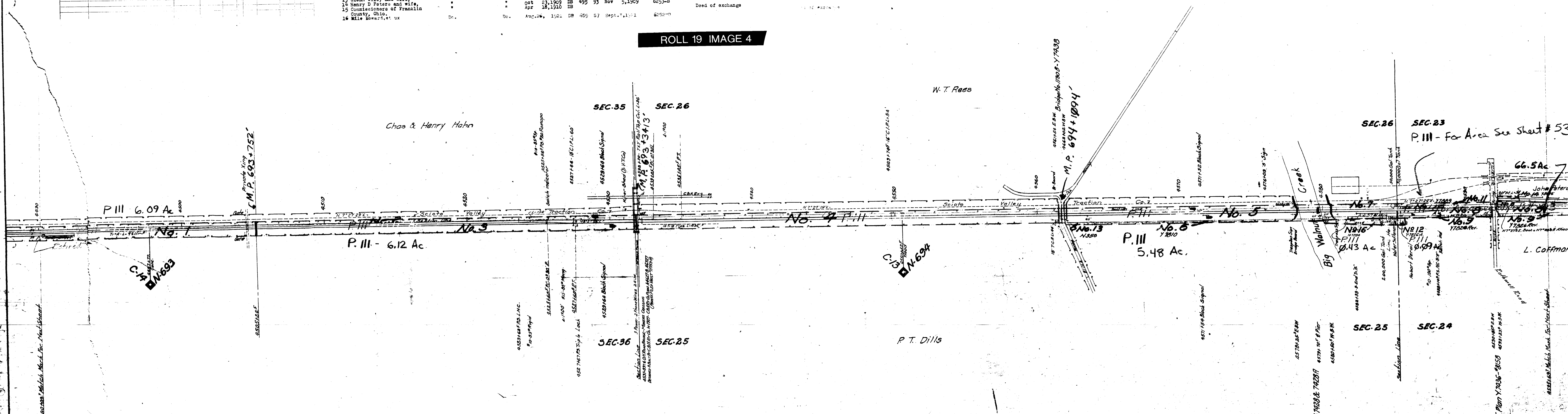
Location	Changes Made	Plan No.	Additions		Retirements	
			A.P.E. No.	Comp. Report No.	A.P.E. No.	Comp. Report No.
Consol. Plan			44788	29	1	1922
Ext. Tr. N. New EA 4571+58			44788	752	2	1924
Ext. Tr. N. New EA 4571+58			44788	742	2	1924
Police Whistle Posts & Trng. Signs			44788	243	1	1923

No.	Grantor	Grantee	Instrument	Date	Record	Cust. No.	Remarks
1	M. R. Miner	SV Ry Co	Deed	Apr 24, 1889	DB 210 196	Jan 22, 1890	6259
2	John R. Stines, et al.	SV Ry Co	Deed	Apr 25, 1887	DB 185 410	May 11, 1887	6257
3	Jacobina Reisel	SV Ry Co	Deed	Nov 28, 1868	DB 200 538	Feb 28, 1869	6255
4	Washington T. Reis	SV Ry Co	Contract	July 14, 1875	DB 174 15	May 9, 1885	6255
5	Washington T. Reis and wife	SV Ry Co	Deed	Sep 12, 1887	DB 192 432	Mar 13, 1888	6255
6	Benjamin F. Reese	SV Ry Co	Contract	July 17, 1875	DB 174 15	May 9, 1885	6255
7	Benjamin F. Reese and wife	N & W Ry Co	Deed	Apr 7, 1909	DB 466 530	Apr 16, 1909	6253-A
8	Harvey Lisle and wife	N & W Ry Co	Deed	Feb 23, 1891	DB 223 21	Mar 2, 1891	6253-A
9	Harvey Lisle, et al.	SV Ry Co	Deed	Mar 12, 1881	DB 174 9	July 28, 1885	6253-A
10	Harvey Lisle, et al.	N & W Ry Co	Deed	Apr 7, 1909	DB 466 533	Apr 14, 1909	6253-A
11	Scioto Valley Traction Co. and Harris Trust & Savings Bank of Chicago	SV Ry Co	Deed	Apr 15, 1910	DB 499 80	June 13, 1910	6253-B
12	Benjamin F. Lisle, et al.	SV Ry Co	Deed	Apr 2, 1911	DB 520 156	Apr 24, 1911	6252-C
13	Mary A. Miller	SV Ry Co	Deed	June 10, 1911	DB 500 807	June 20, 1911	6252-C
14	Caroline Lisle	SV Ry Co	Deed	June 20, 1911	DB 500 808	June 20, 1911	6252-C
15	Henry D. Peters and wife	SV Ry Co	Deed	Sept 24, 1910	DB 502 242	Feb 3, 1911	6252-C
16	Commissioners of Franklin County, Ohio	SV Ry Co	Deed	Oct 23, 1909	DB 495 93	Nov 5, 1909	6252-B
17	W. T. Rees	SV Ry Co	Deed	Apr 18, 1910	DB 499 80	June 13, 1910	6252-B
18	W. T. Rees	SV Ry Co	Deed	Apr 24, 1911	DB 520 156	Apr 24, 1911	6252-C
19	W. T. Rees	SV Ry Co	Deed	June 10, 1911	DB 500 807	June 20, 1911	6252-C
20	W. T. Rees	SV Ry Co	Deed	June 20, 1911	DB 500 808	June 20, 1911	6252-C
21	W. T. Rees	SV Ry Co	Deed	Sept 24, 1910	DB 502 242	Feb 3, 1911	6252-C
22	W. T. Rees	SV Ry Co	Deed	Oct 23, 1909	DB 495 93	Nov 5, 1909	6252-B
23	W. T. Rees	SV Ry Co	Deed	Apr 18, 1910	DB 499 80	June 13, 1910	6252-B
24	W. T. Rees	SV Ry Co	Deed	Apr 24, 1911	DB 520 156	Apr 24, 1911	6252-C
25	W. T. Rees	SV Ry Co	Deed	June 10, 1911	DB 500 807	June 20, 1911	6252-C
26	W. T. Rees	SV Ry Co	Deed	June 20, 1911	DB 500 808	June 20, 1911	6252-C
27	W. T. Rees	SV Ry Co	Deed	Sept 24, 1910	DB 502 242	Feb 3, 1911	6252-C
28	W. T. Rees	SV Ry Co	Deed	Oct 23, 1909	DB 495 93	Nov 5, 1909	6252-B
29	W. T. Rees	SV Ry Co	Deed	Apr 18, 1910	DB 499 80	June 13, 1910	6252-B
30	W. T. Rees	SV Ry Co	Deed	Apr 24, 1911	DB 520 156	Apr 24, 1911	6252-C
31	W. T. Rees	SV Ry Co	Deed	June 10, 1911	DB 500 807	June 20, 1911	6252-C
32	W. T. Rees	SV Ry Co	Deed	June 20, 1911	DB 500 808	June 20, 1911	6252-C
33	W. T. Rees	SV Ry Co	Deed	Sept 24, 1910	DB 502 242	Feb 3, 1911	6252-C
34	W. T. Rees	SV Ry Co	Deed	Oct 23, 1909	DB 495 93	Nov 5, 1909	6252-B
35	W. T. Rees	SV Ry Co	Deed	Apr 18, 1910	DB 499 80	June 13, 1910	6252-B
36	W. T. Rees	SV Ry Co	Deed	Apr 24, 1911	DB 520 156	Apr 24, 1911	6252-C
37	W. T. Rees	SV Ry Co	Deed	June 10, 1911	DB 500 807	June 20, 1911	6252-C
38	W. T. Rees	SV Ry Co	Deed	June 20, 1911	DB 500 808	June 20, 1911	6252-C
39	W. T. Rees	SV Ry Co	Deed	Sept 24, 1910	DB 502 242	Feb 3, 1911	6252-C
40	W. T. Rees	SV Ry Co	Deed	Oct 23, 1909	DB 495 93	Nov 5, 1909	6252-B
41	W. T. Rees	SV Ry Co	Deed	Apr 18, 1910	DB 499 80	June 13, 1910	6252-B
42	W. T. Rees	SV Ry Co	Deed	Apr 24, 1911	DB 520 156	Apr 24, 1911	6252-C
43	W. T. Rees	SV Ry Co	Deed	June 10, 1911	DB 500 807	June 20, 1911	6252-C
44	W. T. Rees	SV Ry Co	Deed	June 20, 1911	DB 500 808	June 20, 1911	6252-C
45	W. T. Rees	SV Ry Co	Deed	Sept 24, 1910	DB 502 242	Feb 3, 1911	6252-C
46	W. T. Rees	SV Ry Co	Deed	Oct 23, 1909	DB 495 93	Nov 5, 1909	6252-B
47	W. T. Rees	SV Ry Co	Deed	Apr 18, 1910	DB 499 80	June 13, 1910	6252-B
48	W. T. Rees	SV Ry Co	Deed	Apr 24, 1911	DB 520 156	Apr 24, 1911	6252-C
49	W. T. Rees	SV Ry Co	Deed	June 10, 1911	DB 500 807	June 20, 1911	6252-C
50	W. T. Rees	SV Ry Co	Deed	June 20, 1911	DB 500 808	June 20, 1911	6252-C
51	W. T. Rees	SV Ry Co	Deed	Sept 24, 1910	DB 502 242	Feb 3, 1911	6252-C
52	W. T. Rees	SV Ry Co	Deed	Oct 23, 1909	DB 495 93	Nov 5, 1909	6252-B
53	W. T. Rees	SV Ry Co	Deed	Apr 18, 1910	DB 499 80	June 13, 1910	6252-B
54	W. T. Rees	SV Ry Co	Deed	Apr 24, 1911	DB 520 156	Apr 24, 1911	6252-C
55	W. T. Rees	SV Ry Co	Deed	June 10, 1911	DB 500 807	June 20, 1911	6252-C
56	W. T. Rees	SV Ry Co	Deed	June 20, 1911	DB 500 808	June 20, 1911	6252-C
57	W. T. Rees	SV Ry Co	Deed	Sept 24, 1910	DB 502 242	Feb 3, 1911	6252-C
58	W. T. Rees	SV Ry Co	Deed	Oct 23, 1909	DB 495 93	Nov 5, 1909	6252-B
59	W. T. Rees	SV Ry Co	Deed	Apr 18, 1910	DB 499 80	June 13, 1910	6252-B
60	W. T. Rees	SV Ry Co	Deed	Apr 24, 1911	DB 520 156	Apr 24, 1911	6252-C
61	W. T. Rees	SV Ry Co	Deed	June 10, 1911	DB 500 807	June 20, 1911	6252-C
62	W. T. Rees	SV Ry Co	Deed	June 20, 1911	DB 500 808	June 20, 1911	6252-C
63	W. T. Rees	SV Ry Co	Deed	Sept 24, 1910	DB 502 242	Feb 3, 1911	6252-C
64	W. T. Rees	SV Ry Co	Deed	Oct 23, 1909	DB 495 93	Nov 5, 1909	6252-B
65	W. T. Rees	SV Ry Co	Deed	Apr 18, 1910	DB 499 80	June 13, 1910	6252-B
66	W. T. Rees	SV Ry Co	Deed	Apr 24, 1911	DB 520 156	Apr 24, 1911	6252-C
67	W. T. Rees	SV Ry Co	Deed	June 10, 1911	DB 500 807	June 20, 1911	6252-C
68	W. T. Rees	SV Ry Co	Deed	June 20, 1911	DB 500 808	June 20, 1911	6252-C
69	W. T. Rees	SV Ry Co	Deed	Sept 24, 1910	DB 502 242	Feb 3, 1911	6252-C
70	W. T. Rees	SV Ry Co	Deed	Oct 23, 1909	DB 495 93	Nov 5, 1909	6252-B
71	W. T. Rees	SV Ry Co	Deed	Apr 18, 1910	DB 499 80	June 13, 1910	6252-B
72	W. T. Rees	SV Ry Co	Deed	Apr 24, 1911	DB 520 156	Apr 24, 1911	6252-C
73	W. T. Rees	SV Ry Co	Deed	June 10, 1911	DB 500 807	June 20, 1911	6252-C
74	W. T. Rees	SV Ry Co	Deed	June 20, 1911	DB 500 808	June 20, 1911	6252-C
75	W. T. Rees	SV Ry Co	Deed	Sept 24, 1910	DB 502 242	Feb 3, 1911	6252-C
76	W. T. Rees	SV Ry Co	Deed	Oct 23, 1909	DB 495 93	Nov 5, 1909	6252-B
77	W. T. Rees	SV Ry Co	Deed	Apr 18, 1910	DB 499 80	June 13, 1910	6252-B
78	W. T. Rees	SV Ry Co	Deed	Apr 24, 1911	DB 520 156	Apr 24, 1911	6252-C
79	W. T. Rees	SV Ry Co	Deed	June 10, 1911	DB 500 807	June 20, 1911	6252-C
80	W. T. Rees	SV Ry Co	Deed	June 20, 1911	DB 500 808	June 20, 1911	6252-C
81	W. T. Rees	SV Ry Co	Deed	Sept 24, 1910	DB 502 242	Feb 3, 1911	6252-C
82	W. T. Rees	SV Ry Co	Deed	Oct 23, 1909	DB 495 93	Nov 5, 1909	6252-B
83	W. T. Rees	SV Ry Co	Deed	Apr 18, 1910	DB 499 80	June 13, 1910	6252-B
84	W. T. Rees	SV Ry Co	Deed	Apr 24, 1911	DB 520 156	Apr 24, 1911	6252-C
85	W. T. Rees	SV Ry Co	Deed	June 10, 1911	DB 500 807	June 20, 1911	6252-C
86	W. T. Rees	SV Ry Co	Deed	June 20, 1911	DB 500 808	June 20, 1911	6252-C
87	W. T. Rees	SV Ry Co	Deed	Sept 24, 1910	DB 502 242	Feb 3, 1911	6252-C
88	W. T. Rees	SV Ry Co	Deed	Oct 23, 1909	DB 495 93	Nov 5, 1909	6252-B
89	W. T. Rees	SV Ry Co	Deed	Apr 18, 1910	DB 499 80	June 13, 1910	6252-B
90	W. T. Rees	SV Ry Co	Deed	Apr 24, 1911	DB 520 156	Apr 24, 1911	6252-C
91	W. T. Rees	SV Ry Co	Deed	June 10, 1911	DB 500 807	June 20, 1911	6252-C
92	W. T. Rees	SV Ry Co	Deed	June 20, 1911	DB 500 808	June 20, 1911	6252-C
93	W. T. Rees	SV Ry Co	Deed	Sept 24, 1910	DB 502 242	Feb 3, 1911	6252-C
94	W. T. Rees	SV Ry Co	Deed	Oct 23, 1909	DB 495 93	Nov 5, 1909	6252-B
95	W. T. Rees	SV Ry Co	Deed	Apr 18, 1910	DB 499 80	June 13, 1910	6252-B
96	W. T. Rees	SV Ry Co	Deed	Apr 24, 1911	DB 520 156	Apr 24, 1911	6252-C
97	W. T. Rees	SV Ry Co	Deed	June 10, 1911	DB 500 807	June 20, 1911	6252-C
98	W. T. Rees	SV Ry Co	Deed	June 20, 1911	DB 500 808	June 20, 1911	6252-C
99	W. T. Rees	SV Ry Co	Deed	Sept 24, 1910	DB 502 242	Feb 3, 1911	6252-C
100	W. T. Rees	SV Ry Co	Deed	Oct 23, 1909	DB 495 93	Nov 5, 1909	6252-B

ROLL 19 IMAGE 4



ROLL 19 IMAGE 5



RIGHT-OF-WAY AND TRACK MAP.
NORFOLK AND WESTERN RY.
SCIOTO DISTRICT.

Sheet No. 52 of 69 sheets of Scioto District
from survey station 4490+08 to survey station 4595+69.
Engineer

STATION 4490+08 TO STATION 4595+69
SCALE 1"=200 FT.

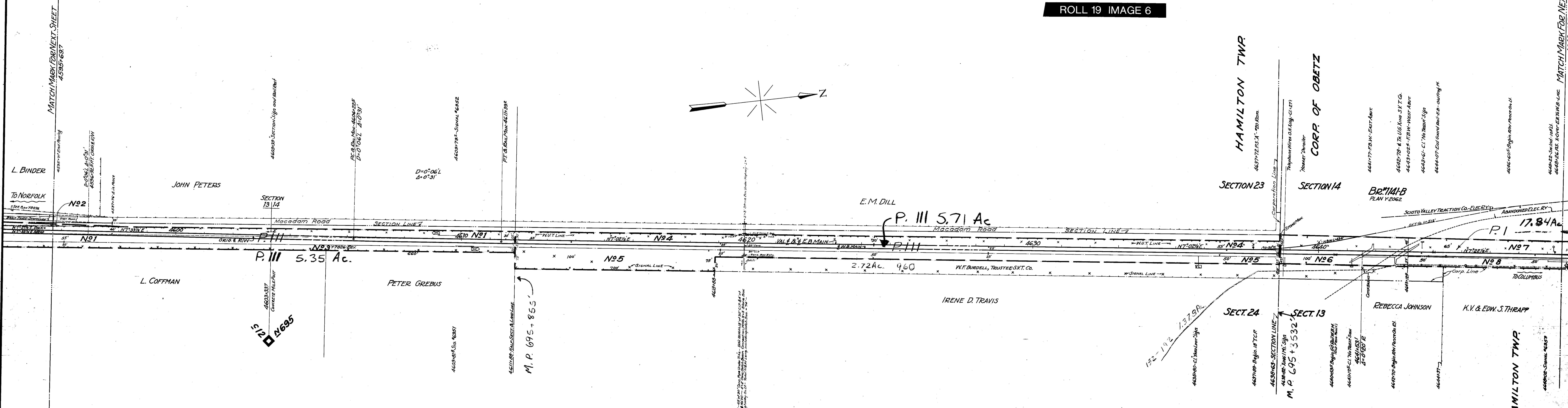
Office of Verification Engineer
Roanoke, Va. June 30, 1911



LOCATION	CHANGES MADE	PLAN NUMBER	ADDITIONS		RETIREMENTS	
			A.F.E.	COMP. REPORT NO. (F. YEAR)	A.F.E.	COMP. REPORT NO. (F. YEAR)
46062	RETIRE MILEAGE PLAN				463467	252 / 1929
46072	RETIRE MILEAGE PLAN					

SCHEDULE OF PROPERTY							
NO.	GRANTOR	GRANTEE	INSTRUMENT	DATE	RECORD	CURT. NO.	
1	Harvey Lisle et ux	S. V. Ry. Co.	Deed	Mar 12, 1881	DB 174	9 July 28, 1880	622
2	Commissioners of Franklin County	N. & W. Ry. Co.	Exch. De.	April 18, 1910			
3	Harvey Lisle et al	N. & W. Ry. Co.	Deed	April 7, 1909	DB 466	533 April 14, 1909	622-A
4	Jacob Stoutsberger	S. V. Ry. Co.	Contract	Aug. 12, 1875			6221
5	F. F. Burdell, Trustee	N. & W. Ry. Co.	Deed	Feb. 1, 1904	DB 384	60 March 23, 1904	6221-A
6	Rebecca Johnson	N. & W. Ry. Co.	Deed	Aug. 25, 1894	DB 261	372 Aug. 31, 1894	6249
7	Samuel Cornea	S. V. Ry. Co.	Contract	July 26, 1875			6249
8	Samuel Bounds et al	N. & W. Ry. Co.	Deed	(Aug. 23, 1904 (April 3, 1905 (April 17, 1905	DB 408	468 April 24, 1905	6249-A
9	F. F. Burdell, Trustee	N. & W. Ry. Co.	Deed	Feb. 1, 1904	DB 384	(62 & March 23, 1904 (64	6249-B

ROLL 19 IMAGE 6



RIGHT-OF-WAY AND TRACK MAP
NORFOLK AND WESTERN RY
 SCIOTO DISTRICT
 STATION 4595+697 TO STATION 4648+497
 SCALE: 1 IN. = 100 FT.

Sheet No 53-A of Sheets of Scioto District
 From Survey Station 4595+697 To Sta. Sta 4648+497

J. D. Duffman
 CHIEF DRAFTSMAN

OFFICE OF CHIEF ENGINEER
 ROANOKE, VA. DEC 31, 1937

V-18-0
 81A

DEC 31, 1937

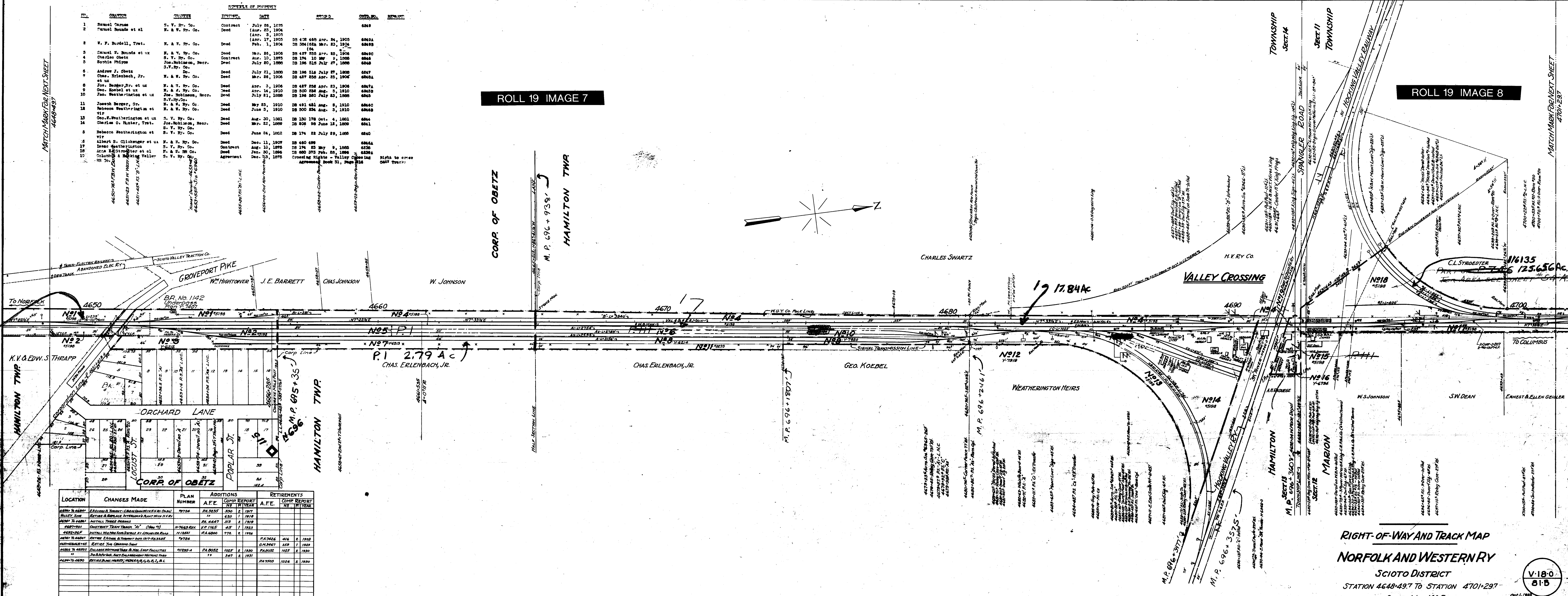
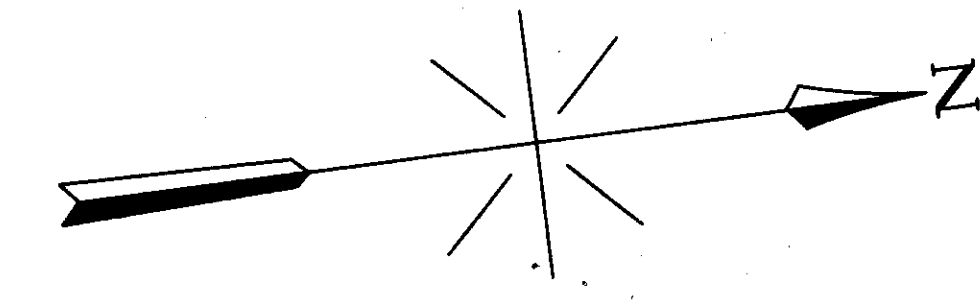
MATCH MARK FOR NEXT SHEET
 4595+697

MATCH MARK FOR NEXT SHEET
 4648+497

ROLL 19 IMAGE 7

ROLL 19 IMAGE 8

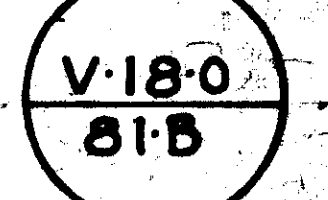
NO.	GRANTOR	GRANTEE	INSTR.	DATE	REC'D	CONV. NO.	REMARKS
1	Samuel Carrow	S. V. Ry. Co.	Contract	July 28, 1878		6249	
2	Carroll Bonds et al	H. & W. Ry. Co.	Deed	(Apr. 23, 1904 Apr. 3, 1905)		6249	
3	W. F. Burdell, Trst.	H. & W. Ry. Co.	Deed	Apr. 17, 1905	DB 438 489 Apr. 24, 1905	6260A	
4	Carroll W. Bonds et ux	H. & W. Ry. Co.	Deed	Apr. 17, 1905	DB 386 (2) Mar. 23, 1904	6260B	
5	Charles Obitz	S. V. Ry. Co.	Contract	Mar. 26, 1906	DB 457 535 Apr. 25, 1906	6260C	
6	Sophia Phipps	Joe. Robinson, Recr.	Deed	Aug. 10, 1875	DB 174 10 Mar. 9, 1888	6261	
7	Andrew J. Obitz	S. V. Ry. Co.	Deed	July 21, 1899	DB 196 516 July 27, 1899	6262	
8	Chas. Erlenbach, Jr.	H. & W. Ry. Co.	Deed	Mar. 26, 1906	DB 457 536 Apr. 25, 1906	6262A	
9	et ux	H. & W. Ry. Co.	Deed	Apr. 3, 1906	DB 457 538 Apr. 23, 1906	6262B	
10	Geo. Koebel et ux	H. & W. Ry. Co.	Deed	Apr. 14, 1910	DB 500 528 Aug. 5, 1910	6262C	
11	Geo. Koebel et ux	Joe. Robinson, Recr.	Deed	July 21, 1899	DB 196 520 July 23, 1899	6262D	
12	Joseph Berger, Sr.	H. & W. Ry. Co.	Deed	May 25, 1910	DB 491 481 Aug. 9, 1910	6262E	
13	Rebecca Weatherington et ux	H. & W. Ry. Co.	Deed	June 3, 1910	DB 500 524 Aug. 5, 1910	6262F	
14	Geo. Weatherington et ux	S. V. Ry. Co.	Deed	Aug. 30, 1881	DB 150 178 Oct. 4, 1881	6264	
15	Charles O. Hunter, Trst.	Joe. Robinson, Recr.	Deed	Mar. 22, 1899	DB 406 378 Feb. 20, 1899	6264A	
16	Rebecca Weatherington et ux	S. V. Ry. Co.	Deed	June 24, 1882	DB 174 22 July 29, 1882	6264B	
17	Albert S. Clickenger et ux	H. & W. Ry. Co.	Deed	Dec. 11, 1907	DB 460 499	6264C	
18	Isaac Weatherington	S. V. Ry. Co.	Contract	Aug. 10, 1878	DB 174 23 Mar. 9, 1885	6230	
19	Isaac Weatherington et ux	H. & W. Ry. Co.	Deed	July 20, 1896	DB 480 378 Feb. 20, 1896	6259A	
20	Isaac Weatherington et ux	S. V. Ry. Co.	Deed	Dec. 29, 1878	DB 174 23 Mar. 9, 1885	6230	
21	Isaac Weatherington et ux	S. V. Ry. Co.	Deed	Dec. 29, 1878	DB 174 23 Mar. 9, 1885	6230	



LOCATION	CHANGES MADE	PLAN NUMBER	ADDITIONS		RETIREMENTS	
			A.F.E.	CONF. REPORT	A.F.E.	CONF. REPORT
4680-70-680A	REPLACE & REPAIR TRACKS ON H.V. BY C&O	9726	PA 3235	330	2	1917
VALLEY JUNCTION	REPLACE & REPAIR TRACKS ON H.V. BY C&O	9726	PA 3235	330	2	1917
4680-70-680B	INSTALL TRACKS ON H.V.	9726	PA 3235	330	2	1917
4680-70-680C	INSTALL TRACKS ON H.V.	9726	PA 3235	330	2	1917
4680-70-680D	INSTALL TRACKS ON H.V.	9726	PA 3235	330	2	1917
4680-70-680E	INSTALL TRACKS ON H.V.	9726	PA 3235	330	2	1917
4680-70-680F	INSTALL TRACKS ON H.V.	9726	PA 3235	330	2	1917
4680-70-680G	INSTALL TRACKS ON H.V.	9726	PA 3235	330	2	1917
4680-70-680H	INSTALL TRACKS ON H.V.	9726	PA 3235	330	2	1917
4680-70-680I	INSTALL TRACKS ON H.V.	9726	PA 3235	330	2	1917
4680-70-680J	INSTALL TRACKS ON H.V.	9726	PA 3235	330	2	1917
4680-70-680K	INSTALL TRACKS ON H.V.	9726	PA 3235	330	2	1917
4680-70-680L	INSTALL TRACKS ON H.V.	9726	PA 3235	330	2	1917
4680-70-680M	INSTALL TRACKS ON H.V.	9726	PA 3235	330	2	1917
4680-70-680N	INSTALL TRACKS ON H.V.	9726	PA 3235	330	2	1917
4680-70-680O	INSTALL TRACKS ON H.V.	9726	PA 3235	330	2	1917
4680-70-680P	INSTALL TRACKS ON H.V.	9726	PA 3235	330	2	1917
4680-70-680Q	INSTALL TRACKS ON H.V.	9726	PA 3235	330	2	1917
4680-70-680R	INSTALL TRACKS ON H.V.	9726	PA 3235	330	2	1917
4680-70-680S	INSTALL TRACKS ON H.V.	9726	PA 3235	330	2	1917
4680-70-680T	INSTALL TRACKS ON H.V.	9726	PA 3235	330	2	1917
4680-70-680U	INSTALL TRACKS ON H.V.	9726	PA 3235	330	2	1917
4680-70-680V	INSTALL TRACKS ON H.V.	9726	PA 3235	330	2	1917
4680-70-680W	INSTALL TRACKS ON H.V.	9726	PA 3235	330	2	1917
4680-70-680X	INSTALL TRACKS ON H.V.	9726	PA 3235	330	2	1917
4680-70-680Y	INSTALL TRACKS ON H.V.	9726	PA 3235	330	2	1917
4680-70-680Z	INSTALL TRACKS ON H.V.	9726	PA 3235	330	2	1917

Sheet No 53-B of Sheets of Scioto District
 From Survey Station 4648+49.7 To Sta. 4701+29.7
 J. S. Doughton
 CHIEF DRAFTSMAN

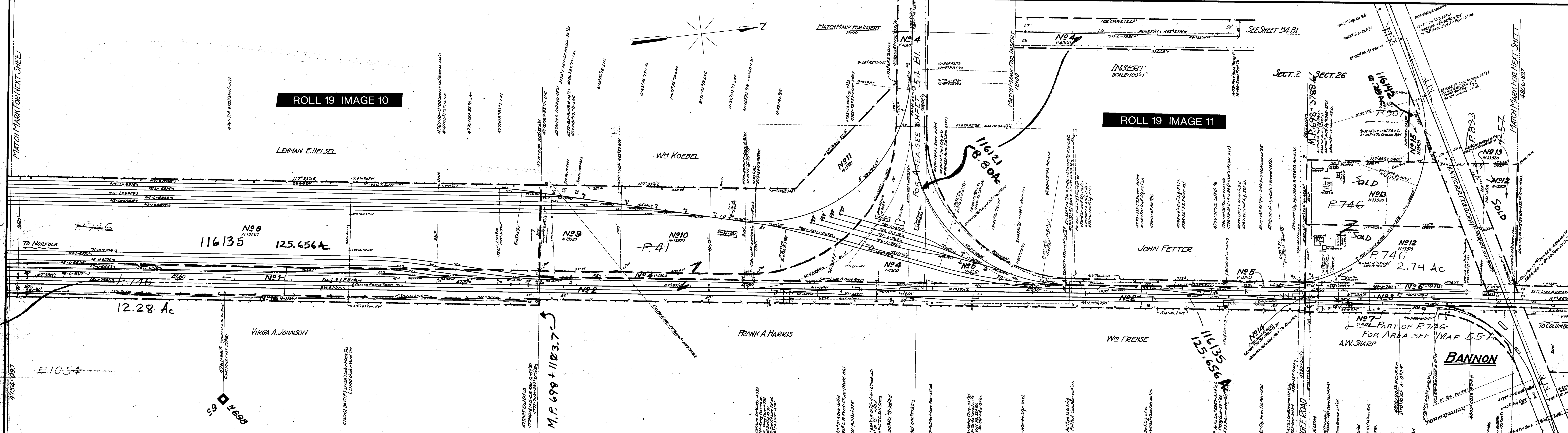
RIGHT-OF-WAY AND TRACK MAP
 NORFOLK AND WESTERN RY
 SCIOTO DISTRICT
 STATION 4648+49.7 TO STATION 4701+29.7
 SCALE: 1 IN. = 100 FT.



OFFICE OF CHIEF ENGINEER
 FORT WASHINGTON, PA.

ROLL 19 IMAGE 10

ROLL 19 IMAGE 11



LOCATION	CHANGES MADE	PLAN NUMBER	ADDITIONS		RETIREMENTS	
			A.F.E.	COMP. REPORT	A.F.E.	COMP. REPORT
4754-097	INSTALL 2 1/2 INCH DECKS AND 2 CHAIR STAIRS	PA 4401	582	1 1919		
4754-097	EXPAND TRACK WEST ADJACENT TO 12 INCH PALE	PA 2352	452	8 1925		
4754-097	INSTALL CONC. CURB AND 12 INCH PALE	PA 2124	70	1 1925		
4754-097	INSTALL CONCRETE E. IN P.I.E.	PA 6704	711	2 1924		
4754-097	EXPAND TR. 12 INCH DECKING TO C.	PA 2372	207	2 1927		
4754-097	RETIRE 2 DECKS INSTALLED 1919-PA 4401				V.P. 4201	103 1 1929
4754-097	RETIRE 1 1/2 INCH DECK				V.P. 4244	47 1 1929
4754-097	INSTALL SIGNAL N. 6507	PA 2052	1025	2 1930	PA 2052	1025 2 1930
4754-097	CHANGE RAILROAD TRACK AND SIGNAL INSTALLING	PA 2052	1025	2 1930		
4754-097	INSTALL SIGNAL N. 6507					
4754-097	REPLACE CHERRY IN N. 6507	PA 2052	1025	2 1930		
4754-097	CONV. INTERLOCKING SIGNALS N. 6507					

NO.	GRANTOR	GRANTEE	SCHEDULE OF PROPERTY		RECORD	CLERK NO.	REMARKS
			DATE	DATE			
1	Quincy A. Watkins	N. & W. RR Co.	Dead	May 26, 1888		6534	
2	John Berlow	S. Y. Ry. Co.	Contract	June 10, 1893		6528	
3	John Berlow et ux	S. Y. Ry. Co.	Dead	Oct. 4, 1901			
4	Emma McColliland et al	S. Y. & N. RR Co.	Dead	May 19, 1890	DB 215 216	June 15, 1890	6521
5	Wm. Koebel	S. Y. & N. RR Co.	Dead	Feb. 21, 1903	DB 348 100	Feb. 24, 1903	6528-A
6	John Fetter, Jr. et ux	Do	Dead	March 5, 1900	DB 346 122	Mar. 7, 1900	6521-C
7	Louis Swanson et al	Do	Dead	July 1, 1900	DB 370 489	July 8, 1900	6521-C
8	Mary Yoss	Do	Dead	July 1, 1900	DB 370 489	July 8, 1900	6521-C
9	Amor Sherry et ux	Do	Dead	Aug. 28, 1900	DB 371 524	April 16, 1900	6521-C
10	Lehman E. Helsel	Do	Dead	April 4, 1900	DB 347 549	April 16, 1900	6521-C
11	Wm. Koebel & Corn. E. Helsel et vir	Do	Dead	Aug. 15, 1889	DB 288 441	Aug. 15, 1889	6524-B
12	Wm. Koebel & Laura M. Foruma et vir	Do	Dead	July 22, 1889	DB 287 440	July 20, 1889	6524-B
13	Wm. Koebel & Emma Helwig et vir	Do	Dead	July 22, 1889	DB 287 440	July 20, 1889	6524-B
14	Harry Swanson et ux	Do	Dead	July 22, 1889	DB 287 440	July 20, 1889	6524-B
15	John Wilson Carter	Do	Dead	July 22, 1889	DB 287 440	July 20, 1889	6524-B
16	Board of County Commissioners	Do	Resolution	Aug. 6, 1889	DB 288 441	Aug. 7, 1889	6521-P
17	John Fetter et ux	Do	Dead	Aug. 15, 1889	DB 284 121	March 14, 1890	6521-P
18	Virga A. Johnson	Do	Dead	March 15, 1890	DB 286 126	March 20, 1890	
19		Do	Dead	July 18, 1900	DB 285 125	July 14, 1900	

(Right to cross Refuge Rd. with 5 additional tracks)

SECTION 1 SECTION 25

RIGHT-OF-WAY AND TRACK MAP
NORFOLK AND WESTERN RY

SCIOTO DISTRICT
STATION 4754-097 TO STATION 4806-897
SCALE: 1 IN = 100 FT.

Sheet No 54-B of Sheets of Scioto District
From Survey Station 4754-097 To Sta. 4806-897
J. R. Doughton
CHIEF ENGINEER

OFFICE OF CHIEF ENGINEER
COLUMBUS, OHIO, DEC. 31, 1903

V.180
825

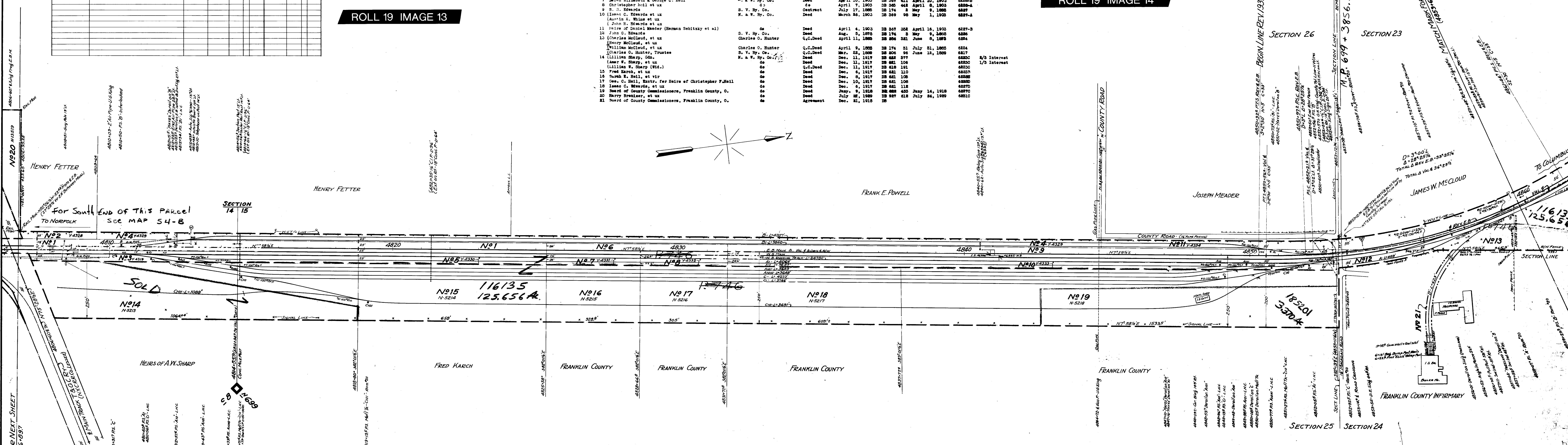
1903

LOCATION	CHANGES MADE	PLAN NUMBER	ADDITIONS		RETIREMENTS	
			A.F.E.	COMP. REPORT YEAR	A.F.E.	COMP. REPORT YEAR
4809-135 TO 4819-20	COUNT BY TRACK AND LINE, AND C.D. AND TRAVEL TO A.M.	10220	PA 8116	1919		
4796-190 TO 4819-28	EXTEND C. TO FRONT SW CORNER - DIST. 2 BOXES - MOVE TO CORNER	11226	PA 6708	1916		
4796-190 TO 4819-28	COUNT BY TRACK AND LINE, AND C.D. AND TRAVEL TO A.M.	11250	PA 8052	1925	1930	1930
4809-135 TO 4819-20	CHANGES TO GRADE, LINES, AND YARD CHANGES	10487	PA 2371	1925	1930	
4809-135 TO 4819-20	RETIREMENTS AND CHANGES UNDER PA 2371-1930				PA 7503	1926

ROLL 19 IMAGE 13

NO.	GRANTOR	GRANTEE	INSTRUMENT	DATE	RECORD	CUST. NO.	REMARKS
1	Hess McClelland	S. V. & H. E. RR Co.	Deed	May 19, 1890	DB 215 292	June 13, 1890	6831
2	Henry & Dora Fetter		Deed	July 1, 1903	DB 368 504	July 13, 1903	6831-D
3	Amor W. Sharp et ux	do	Deed	April 4, 1903	DB 369 349	April 16, 1903	6831-B
4	The Pontifical College Josephinum of the Sacred Congregation for the Propagation of Faith	do	Deed	May - 6, 1903	DB 366 448	May 18, 1903	6831-E
5	Fred Karch et ux	do	Deed	March 23, 1903	DB 367 190	March 24, 1903	6831-A
6	J. H. Hill	S. V. Ry. Co.	Contract	Aug. 6, 1875	DB 174 4	May 9, 1888	6828
7	Sarah Elizabeth & George C. Hill	M. & W. Ry. Co.	Deed	April 10, 1903	DB 369 411	April 10, 1903	6828-B
8	Christopher Hill et ux	do	Deed	April 7, 1903	DB 363 448	April 9, 1903	6828-A
9	S. S. Edwards	S. V. Ry. Co.	Contract	July 17, 1888	DB 174 3	May 9, 1888	6827
10	Isaac C. Edwards et ux	M. & W. Ry. Co.	Deed	March 26, 1903	DB 369 98	May 1, 1903	6827-A
11	Heirs of Daniel Meader (Herman Sebittz et al)	do	Deed	April 4, 1903	DB 367 368	April 16, 1903	6827-B
12	John G. Edwards	S. V. Ry. Co.	Deed	Aug. 5, 1875	DB 174 3	May 9, 1888	6826
13	Charles O. Hunter, et ux	Charles O. Hunter	Q.C. Deed	April 11, 1888	DB 886 321	June 8, 1893	6824
14	William McCloud, et ux	Charles O. Hunter	Q.C. Deed	April 9, 1903	DB 174 31	July 31, 1903	6824
15	Charles O. Hunter, Trustee	S. V. Ry. Co.	Q.C. Deed	May 22, 1888	DB 806 96	June 12, 1888	6817
16	Lillian W. Sharp (wid.)	M. & W. Ry. Co.	Deed	Dec. 11, 1917	DB 622 377		6823C
17	Amor W. Sharp, et ux	do	Deed	Dec. 11, 1917	DB 621 106		6823C
18	Fred Karch, et ux	do	Q.C. Deed	Dec. 11, 1917	DB 618 191		6823C
19	Sarah H. Hill, et ux	do	Deed	Dec. 8, 1917	DB 621 106		6823B
20	Geo. C. Hill, Exor. for Heirs of Christopher F. Hill	do	Deed	Dec. 10, 1917	DB 621 106		6823D
21	Isaac C. Edwards, et ux	do	Deed	Dec. 6, 1917	DB 621 118		6827D
22	Board of County Commissioners, Franklin County, O.	do	Deed	July 9, 1918	DB 622 435	July 14, 1918	6827C
23	Harry Brewster, et ux	do	Deed	July 27, 1888	DB 987 618	July 24, 1888	6810
24	Board of County Commissioners, Franklin County, O.	do	Agreement	Dec. 21, 1918			

ROLL 19 IMAGE 14



RIGHT-OF-WAY AND TRACK MAP
NORFOLK AND WESTERN RY

SCIOTO DISTRICT
STATION 4806+69.7 TO STATION 4859+69.7
SCALE: 1 IN. = 100 FT.

Sheet No 55A of Sheets of Scioto District
From Survey Station 4806+69.7 TO SUR. STA. 4859+69.7

J. H. Dunningham
CHIEF DRAFTSMAN

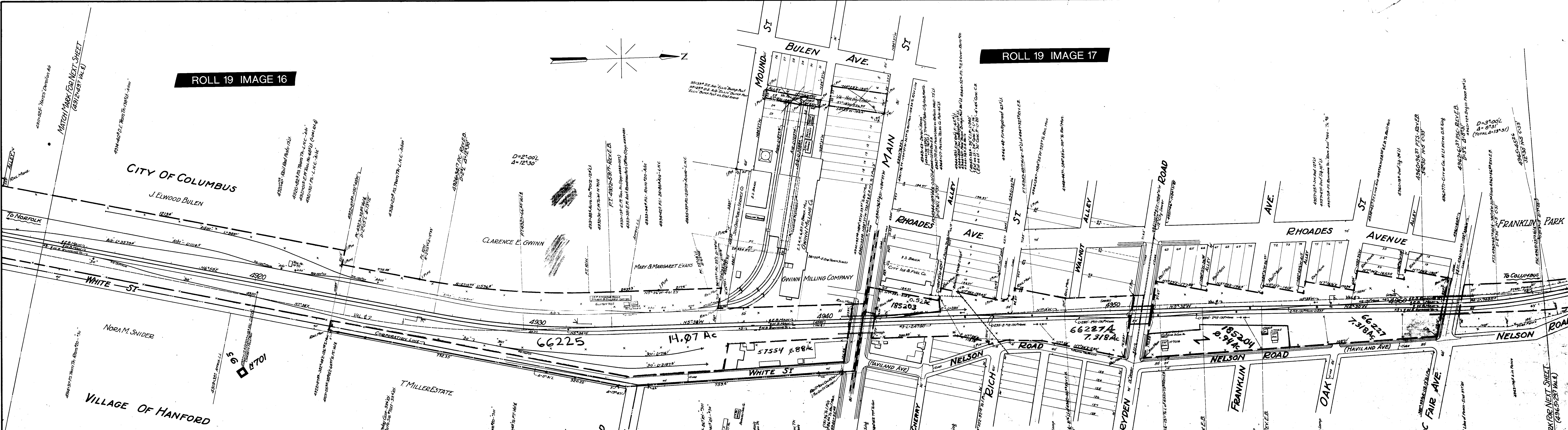
OFFICE OF CHIEF ENGINEER
ROANOKE, VA. DEC. 31, 1931

V-18-0
83A

V-19-0
55A

ROLL 19 IMAGE 16

ROLL 19 IMAGE 17



LOCATION	CHANGES MADE	PLAN NUMBER	ADDITIONS			RETIREMENTS				
			A.F.E.	NR	P. YEAR	A.F.E.	NR	P. YEAR		
4946+43 TO 4948+50	CONST. ROVER W.B. TO E.B.-L-196	PA 4857	85	1	1920					
4845+57 TO 4847+63	EXTEND TRACK C HALF TO FT	PA 5112	532	2	1921					
4922+54	INSTALL PINE WING SIGN SIGNAL AT FOUR AV.	A-308	PA 6047	130	1	1922				
4847+68	CONST. SIGNING-CITY ICE & FUEL CO.-TRACK D	N-8922	VP 2259	315	1	1925				
4801+76	EXTEND TRACK TO HULLOCK SAND CO.	N-8570	G.M. 3196	699	1	1925	Y.P. 2174	126	1	1925
4941+42	EXTEND HAND OPER. CROSSING GATES AT MAIN ST.		GM 3370	755	2	1926				
4841+6 TO 4941+71	INSTALL "BUDA" ELEC. OPERATED KING GATES MAIN ST.	PA 6675	718	2	1926					
4929+88	RETIRE TR. #1 HULLOCK SAND CO.	N-8570	GM 3432	600	2	1929				
4841+6 TO 4941+71	EXTEND ELEC. SIGN GATES MAIN ST. TO MAIN ST. FROM AC.		PA 7503	50	1	1929				
4945+58	RETIRE SIGNING-CITY ICE & FUEL CO. TR. D		PA 7545	50	1	1929				
4840+8 TO 4842+11	CHANGES ACT. CROSSING GATES, LANE & YARD CHANGES	8432 C.R.P.	PA 2371	1028	2	1930				
4842+12 TO 4843+45	RETIREMENTS ACT. CHANGES MADE UNDER PA 2371		PA 7503	1026	2	1930				

STATION MAP--TRACKS AND STRUCTURES

NORFOLK AND WESTERN RY

SCIOTO DISTRICT

STATION 4912+497 TO STATION 4965+297

SCALE: 1 IN. = 100 FT.

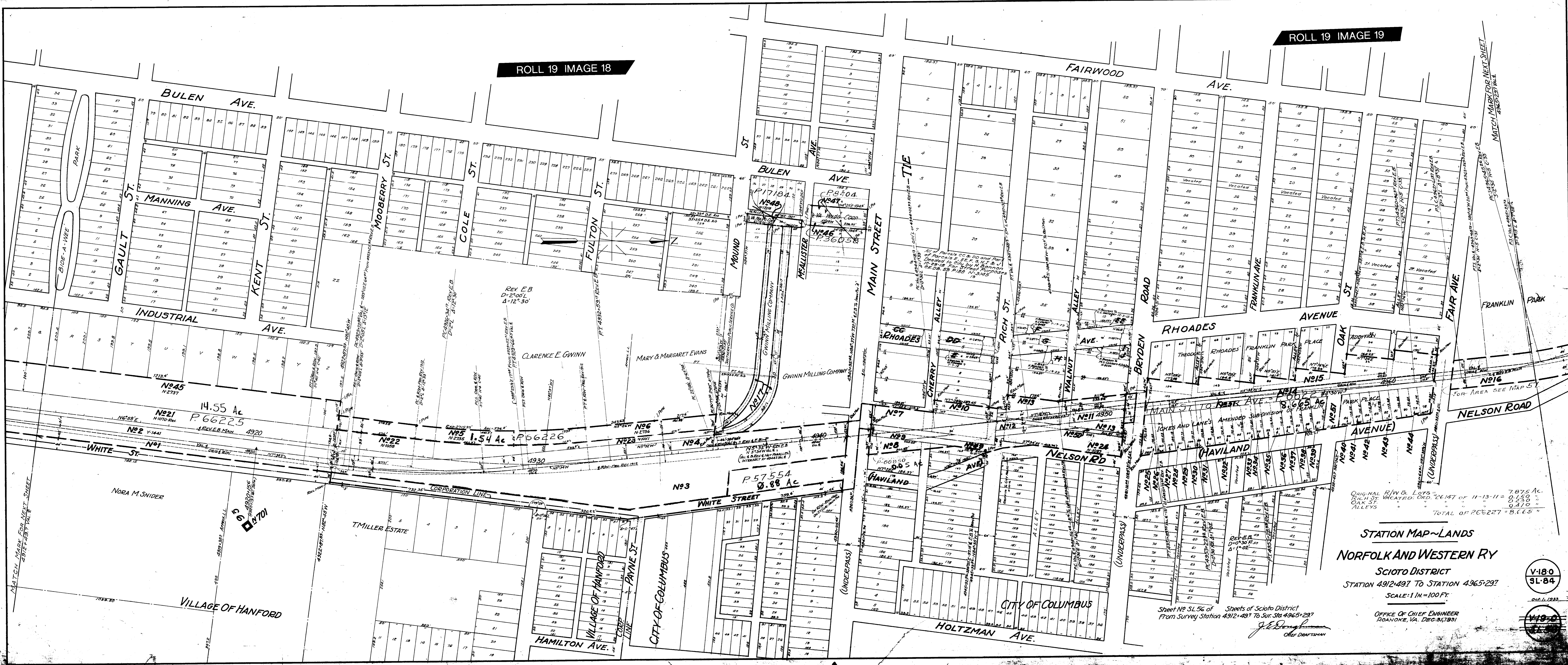
Sheet No 56 of Sheets of Scioto District
From Survey Station 4912+497 To Sta 4965+297

J. E. Doughton
CHIEF DRAFTSMAN

OFFICE OF CHIEF ENGINEER
ROANOKE, VA. DEC. 31, 1931

V-18-0
84

V-18-0
58



ORIGINAL R/W & LOTS "26147 OF 11-13-11" = 7.975 AC.
 OAK ST. VACATED. ORD. "26150" = 0.250 AC.
 ALLEYS "26151" = 0.470 AC.
 TOTAL OF P. 66227 = 8.695 AC.

STATION MAP~LANDS
NORFOLK AND WESTERN RY

Scioto District
 STATION 4912+491 TO STATION 4965+291
 SCALE: 1 IN = 100 FT.

Sheet No. 51.56 of Sheets of Scioto District
 From Survey Station 4912+491 To SUR. STA. 4965+291
 J. D. [Signature]
 CHIEF DRAFTSMAN

V-180
 SL-84

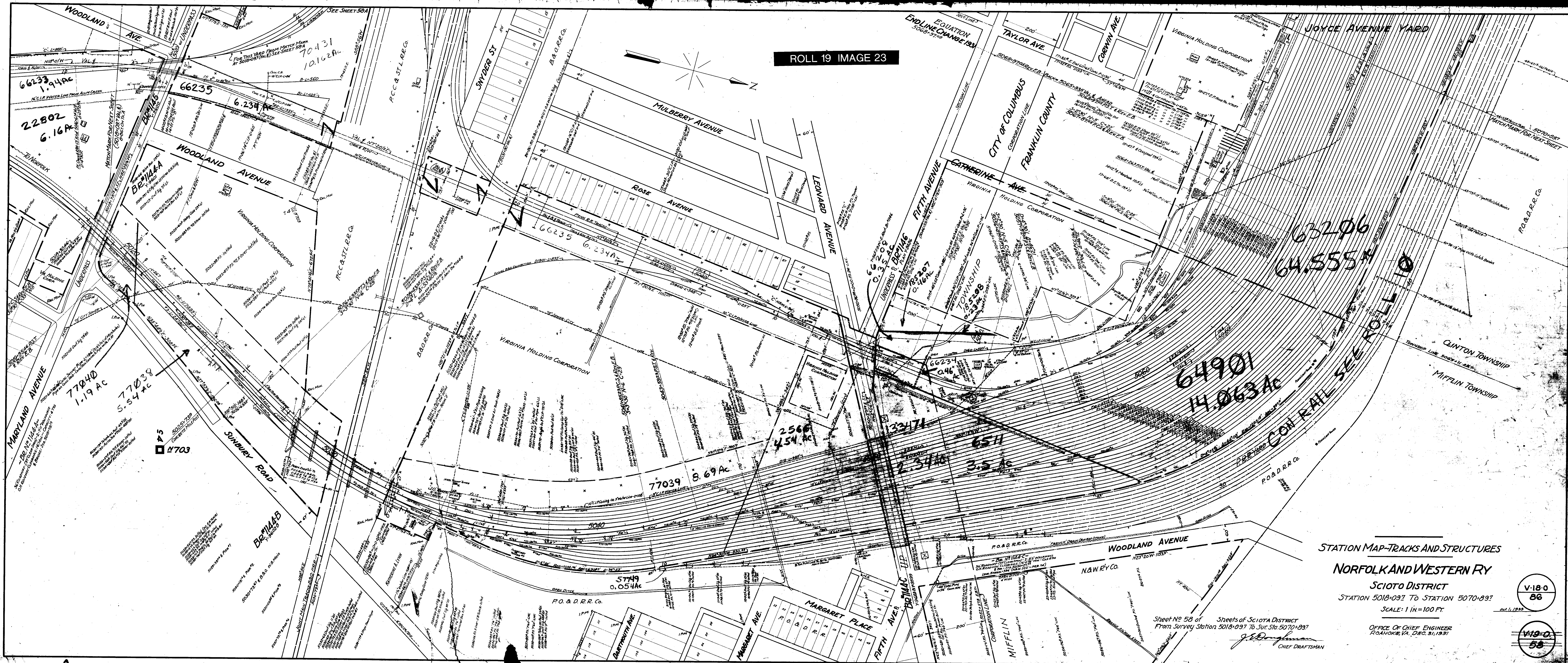
V-190
 SL-84

Oct. 1, 1933

OFFICE OF CHIEF ENGINEER
 ROANOKE, VA. DEC. 31, 1931

MATCH MARK FOR NEXT SHEET
 4874-4875-14.8

MATCH MARK FOR NEXT SHEET
 4875-4876-14.8



STATION MAP-TRACKS AND STRUCTURES

NORFOLK AND WESTERN RY

SCIOTO DISTRICT

STATION 5018+09.2 TO STATION 5070+89.7

SCALE: 1 in = 100 FT.

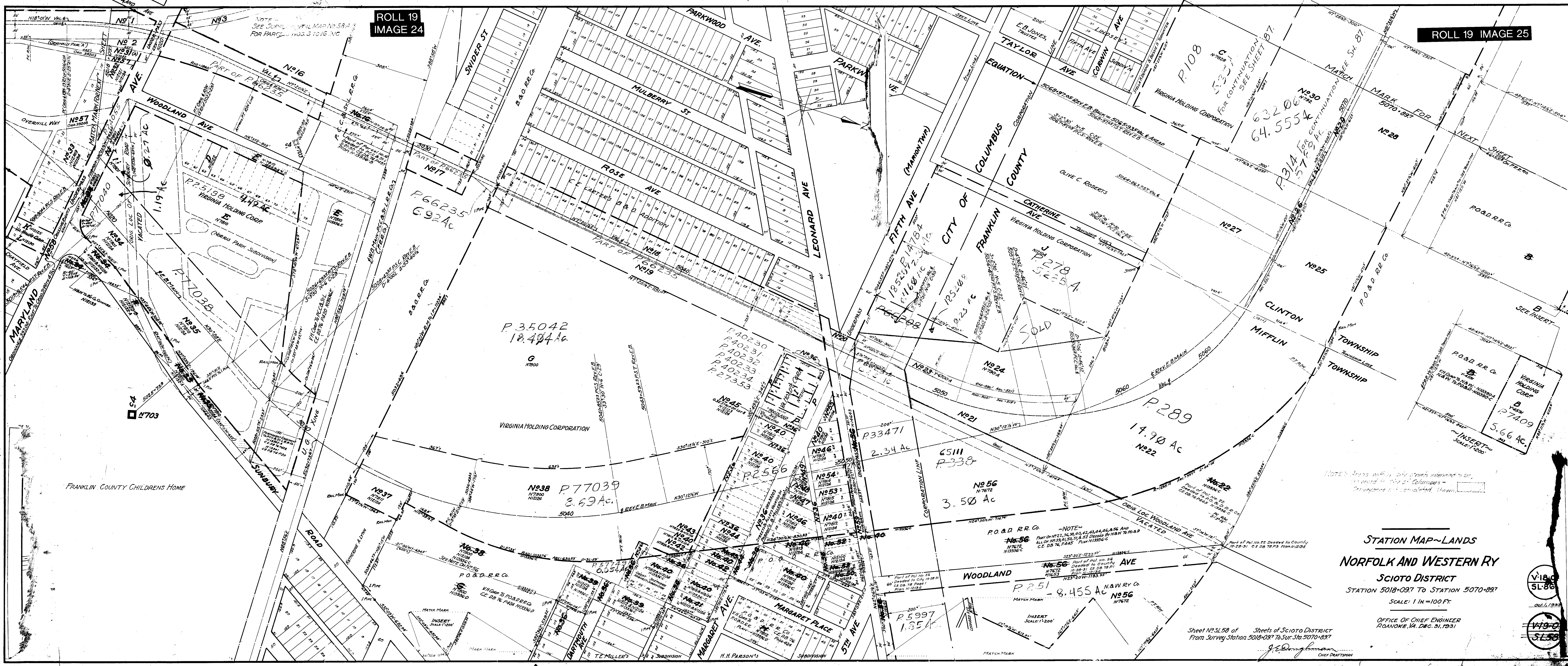
Sheet No 58 of Sheets of SCIOTO DISTRICT
From Survey Station 5018+09.2 To Sur. Sta. 5070+89.7

J. D. Doughton
CHIEF DRAFTSMAN

OFFICE OF CHIEF ENGINEER
ROANOKE, VA., DEC. 31, 1931

V-18-0
86

V-19-0
58



STATION MAP~LANDS
 NORFOLK AND WESTERN RY
 SCIOTO DISTRICT
 STATION 5018-097 TO STATION 5070-897
 SCALE: 1 IN. = 100 FT.

Sheet No. 5L58 of Sheets of Scioto District
 From Survey Station 5018-097 To Sta. 5070-897
 J. E. Doughman
 CHIEF DRAFTSMAN

V18-C
 5L-86
 V19-C
 5L-86

NOTE: Areas within city streets intended to be conveyed to City of Columbus - convenience not indicated, shown.

NOTE: Part of Pol. No. 56 Decided in City 1908-51
 Part of Pol. No. 56 Decided in County 10-28-91 C.E. DB 78 P. 11335-6
 Part of Pol. No. 56 Decided in County 10-28-91 C.E. DB 78 P. 11335-6
 Part of Pol. No. 56 Decided in County 10-28-91 C.E. DB 78 P. 11335-6
 Part of Pol. No. 56 Decided in County 10-28-91 C.E. DB 78 P. 11335-6

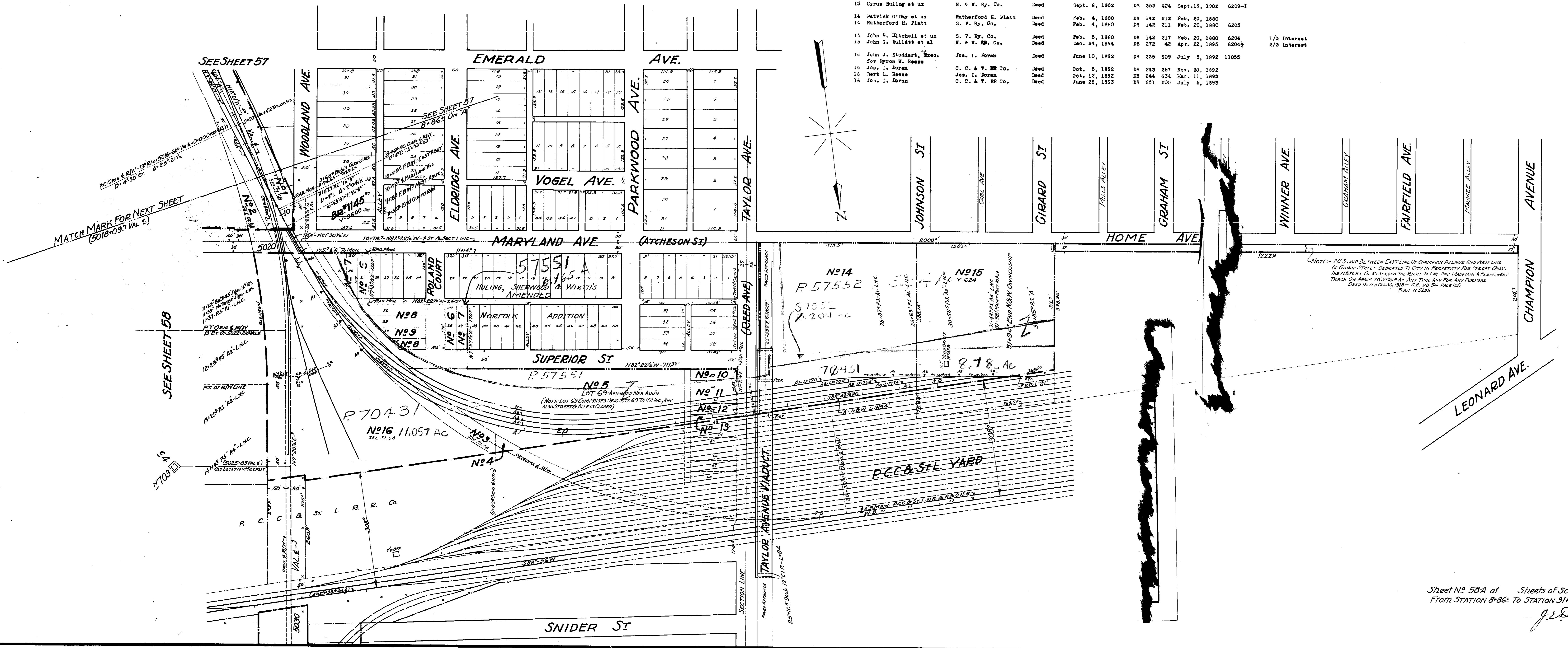
PO & N.W. R.R. Co.
 VIRGINIA HOLDING CORP
 B. 7409
 5.66 AC.
 ~INSERT~
 SCALE 1:200

FRANKLIN COUNTY CHILDRENS HOME

NOTE: SEE SUPPLEMENTAL MAP NO. 58-A FOR PARCELS NOS. 3 TO 16, INC.

NO.	GRANTOR	GRANTEE	INSTMT.	DATE	RECORD	CUST. NO.	REMARKS
1	H. M. Nelson	S. V. Ry. Co.	Contract	Aug. 30, 1875		6210	
	Do	Do	Receipt	Nov. 1876			
2	Anne E. Nelson	Joe. I. Doran	Deed	May 4, 1892	DB 234 533	May 31, 1892	11056
3	J. I. Doran et ux	C. C. & T. Ry. Co.	Deed	Oct. 5, 1892	DB 243 255	Nov. 27, 1892	
4	Byron W. Reese	S. V. Ry. Co.	Contract	Aug. 26, 1875	DB 374 78	July 23, 1903	6209
5	H. R. Huffman	S. V. Ry. Co.	Contract	Aug. 28, 1875	DB 174 5	July 28, 1885	6208
6	David Reel & C. W. Heggendorf	H. & W. Ry. Co.	Deed	Aug. 6, 1902	DB 355 494	Aug. 13, 1902	6209-A
7	Cyrus Haling et ux	H. & W. Ry. Co.	Deed	Jan. 3, 1903	DB 363 13		6209-B
8	Wm. Shepard	H. & W. Ry. Co.	Deed	Jan. 17, 1903	DB 365 14		6209-C
9	Cyrus Haling et ux	H. & W. Ry. Co.	Deed	Aug. 6, 1902	DB 355 492	Aug. 12, 1902	6209-H
10	Wm. Shepard	H. & W. Ry. Co.	Deed	Aug. 6, 1902	DB 355 491	Aug. 12, 1902	6209-G
11	Wm. Shepard	H. & W. Ry. Co.	Deed	Jan. 17, 1903	DB 363 39	Jan. 24, 1903	6209-D
12	Cyrus Haling et ux	H. & W. Ry. Co.	Deed	Jan. 17, 1903	DB 363 40		6209-E
13	Alice M. & James S. Barber	H. & W. Ry. Co.	Deed	Jan. 13, 1903	DB 363 38	Jan. 19, 1903	6209-F
14	Cyrus Haling et ux	H. & W. Ry. Co.	Deed	Sept. 8, 1902	DB 353 424	Sept. 19, 1902	6209-I
15	Patrick O'Day et ux	Rutherford H. Platt	Deed	Feb. 4, 1880	DB 142 212	Feb. 20, 1880	
16	Rutherford H. Platt	S. V. Ry. Co.	Deed	Feb. 4, 1880	DB 142 211	Feb. 20, 1880	6205
17	John G. Mitchell et ux	S. V. Ry. Co.	Deed	Feb. 5, 1880	DB 142 217	Feb. 20, 1880	6204
18	John G. Bullitt et al	H. & W. Ry. Co.	Deed	Dec. 24, 1894	DB 272 42	Apr. 25, 1895	6204H
19	John J. Stoddart, Reco. for Byron W. Reese	Joe. I. Doran	Deed	June 10, 1892	DB 235 609	July 6, 1892	11055
20	Joe. I. Doran	C. C. & T. Ry. Co.	Deed	Oct. 5, 1892	DB 243 257	Nov. 30, 1892	
21	Hart L. Reese	Joe. I. Doran	Deed	Oct. 12, 1892	DB 244 434	Mar. 11, 1893	
22	Joe. I. Doran	C. C. & T. Ry. Co.	Deed	June 28, 1893	DB 251 200	July 5, 1893	

LOCATION	CHANGES MADE	PLAN NUMBER	ADDITIONS			RETIREMENTS		
			A.F.E.	CONF. REPORT	YEAR	A.F.E.	CONF. REPORT	YEAR
6334-26 S. 5017-33	EXTEND TO EAST LINE - EXTEND DE TIES	N5702-A	PA 4891	210	1	1921		
30-25-1 ON A	CONTRACT DRAINAGE N-7029	A 2327	V.P. 1456	177	2	1923		
0-00-76 1/4 ON A	CHANGES TO TRK. ACCT. GRADES UNDER PA 2371	PA 2371	PA 2371	1028	2	1930		
4394-24 1/2 ON A	RETIRE PA 2371						PA 2503	1026 = 1930



RIGHT-OF-WAY AND TRACK MAP
 NORFOLK AND WESTERN RY
 SCIOTO DISTRICT
 STATION 8+86± TO STATION 31+94±
 SCALE: 1 IN = 100 FT.

Sheet No 58A of Sheets of Scioto District
 From Station 8+86± To Station 31+94±
 J. J. Doughman
 CHIEF DRAFTSMAN

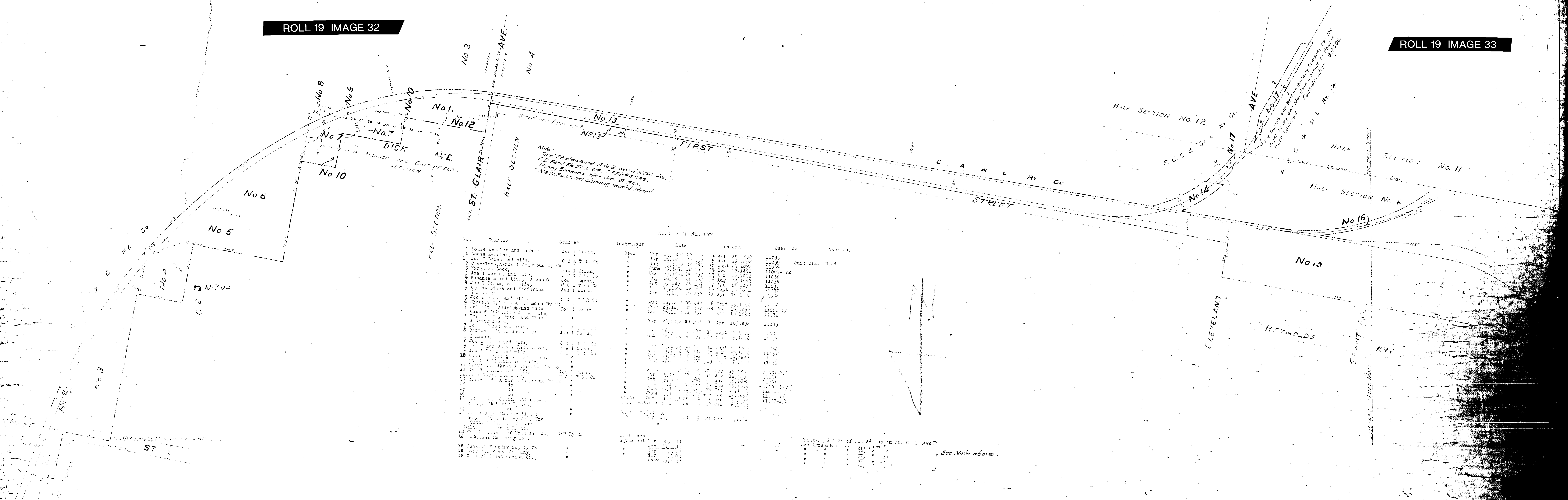
OFFICE OF CHIEF ENGINEER
 ROANOKE, VA. DEC. 31, 1931

V-18-0
 86A
 OCT 11 1932
 V-19-0
 58A



Sheet No. 60 of 69 sheets Scioto District
 from survey station 5123 + 681 to survey station 5176 + 487

RIGHT-OF-WAY AND
 NORFOLK AND W
 Scioto Dist
 STATION



INDEX OF RECORDS

No.	Grantor	Grantee	Instrument	Date	Record	Due	Remarks
1	Louis Kneller and wife	Joe I. Doran	Deed	Mar 25, 1898	DB 271	4 Apr 18, 1898	11039
1	Joe I. Doran et al.	Joe I. Doran	Deed	Mar 25, 1898	DB 271	9 Apr 18, 1898	11039
2	Cleveland, Akron & Columbus Ry Co	C. A. & C. Ry Co	Deed	June 25, 1898	DB 271	10 Oct 19, 1898	11040
3	James Loebe	Joe I. Doran	Deed	June 25, 1898	DB 271	10 Dec 19, 1898	11041-12
4	Joe I. Doran and wife	C. A. & C. Ry Co	Deed	June 25, 1898	DB 271	12 Jan 15, 1899	11038
5	Sarah B. and Richard A. Hawk	Joe I. Doran	Deed	Aug 18, 1898	DB 271	18 Aug 20, 1898	11038
6	James Loebe and Frederick	C. A. & C. Ry Co	Deed	Aug 18, 1898	DB 271	7 Oct 18, 1898	11037
7	Joe I. Doran and wife	Joe I. Doran	Deed	Mar 25, 1898	DB 271	10 Apr 18, 1898	11038
8	James Loebe and wife	C. A. & C. Ry Co	Deed	June 25, 1898	DB 271	8 Sept 25, 1898	11038
9	Charles W. Aldrich and wife	Joe I. Doran	Deed	Mar 25, 1898	DB 271	11 Feb 11, 1898	11031-17
10	James Loebe and wife	Joe I. Doran	Deed	Mar 25, 1898	DB 271	10 Apr 18, 1898	11038
11	James Loebe and wife	Joe I. Doran	Deed	Mar 25, 1898	DB 271	10 Apr 18, 1898	11038
12	James Loebe and wife	Joe I. Doran	Deed	Mar 25, 1898	DB 271	10 Apr 18, 1898	11038
13	James Loebe and wife	Joe I. Doran	Deed	Mar 25, 1898	DB 271	10 Apr 18, 1898	11038
14	James Loebe and wife	Joe I. Doran	Deed	Mar 25, 1898	DB 271	10 Apr 18, 1898	11038
15	James Loebe and wife	Joe I. Doran	Deed	Mar 25, 1898	DB 271	10 Apr 18, 1898	11038
16	James Loebe and wife	Joe I. Doran	Deed	Mar 25, 1898	DB 271	10 Apr 18, 1898	11038
17	James Loebe and wife	Joe I. Doran	Deed	Mar 25, 1898	DB 271	10 Apr 18, 1898	11038
18	James Loebe and wife	Joe I. Doran	Deed	Mar 25, 1898	DB 271	10 Apr 18, 1898	11038

Note:
 First St abandoned A to B ward of City of C. E. Bond 82-27 p. 217. C.E. Bond 82-272. Henry Bannan's offer Jan. 21, 1923. N & W Ry Co. not claiming vacant street.

The East Side of 1st St. to St. Clair Ave. See A. Bond 82-27 p. 217. See Note above.

STATION MAP - LANDS
 NORFOLK AND WEST
 Scioto District
 STATION 123 EASTING

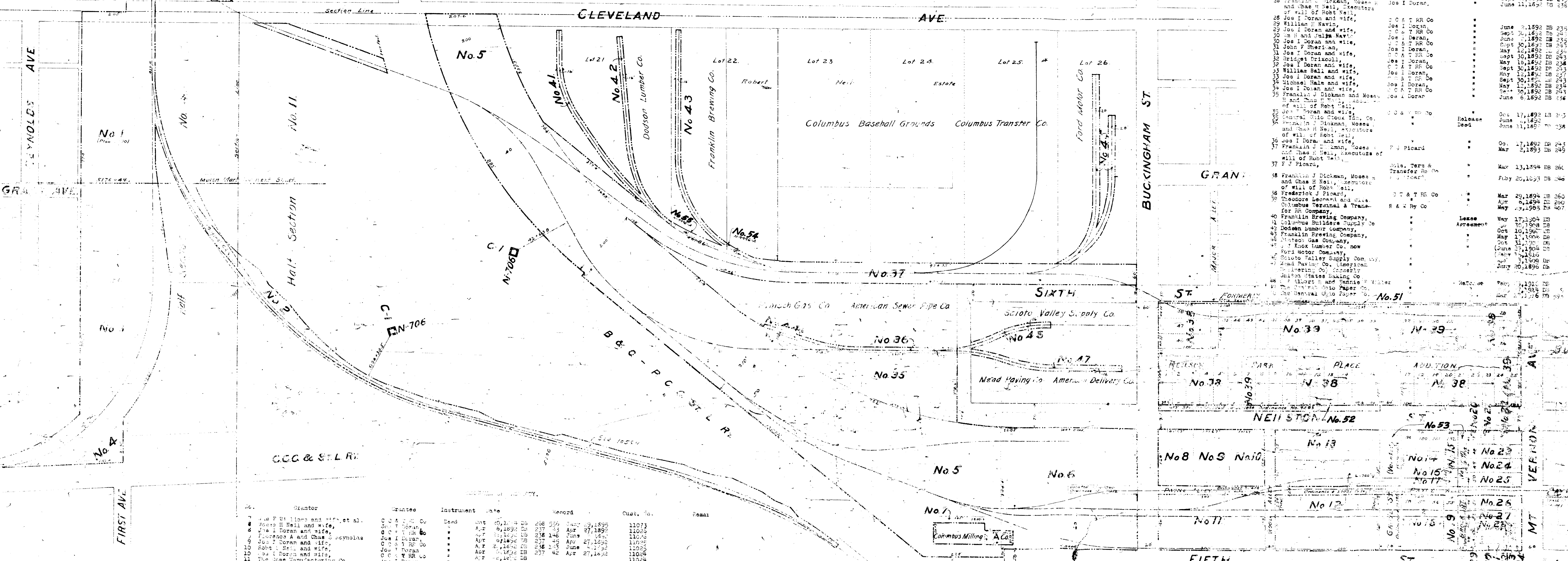
Scale 1" = 60 feet
 60 feet
 5176+40
 5176+40

ROLL 19 IMAGE 35

ROLL 19 IMAGE 36

No.	Grantor	Grantee	Instrument	Date	Record	Cost. No.	Remarks
1	Cleveland, Akron & Col. Ry Co	C O & T RR Co	Lease	June 23, 1892	DB 242 474	Dec 19, 1892	11001-1/2
2	Franklin J. Dickman, Moses H and Chas H Bell, Executors of will of Robt. Bell,	Joe I Doran,	Lease	Oct 1, 1892	DB 237 58	Apr 26, 1892	11011-1/2
3	Joe I Doran,	C O & T RR Co	Lease	Apr 26, 1892	DB 238 136	June 5, 1892	11020
4	Franklin J. Dickman, Moses H and Chas H Bell, Executors of will of Robt. Bell,	Joe I Doran,	Lease	Apr 26, 1892	DB 237 58	Apr 26, 1892	11028
5	Joe I Doran and wife,	C O & T RR Co	Lease	Oct 7, 1892	DB 242 143	Oct 24, 1892	11028
6	Franklin J. Dickman, Moses H and Chas H Bell, Executors of will of Robt. Bell,	Joe I Doran,	Lease	Apr 6, 1892	DB 237 58	Apr 26, 1892	11029
7	Joe I Doran and wife,	C O & T RR Co	Lease	Apr 22, 1892	DB 238 225	June 24, 1892	11029
8	United Lumber Co	C O & T RR Co	Lease	June 5, 1892	DB 236 319	July 13, 1892	11030
9	Franklin J. Dickman, Moses H and Chas H Bell, Executors of will of Robt. Bell,	C O & T RR Co	Lease	June 11, 1892	DB 236 309	July 12, 1892	11031

1. Hepple of Property
 2. City of Columbus
 3. City of Columbus
 4. City of Columbus
 5. City of Columbus
 6. City of Columbus
 7. City of Columbus
 8. City of Columbus
 9. City of Columbus
 10. City of Columbus
 11. City of Columbus
 12. City of Columbus
 13. City of Columbus
 14. City of Columbus
 15. City of Columbus
 16. City of Columbus
 17. City of Columbus
 18. City of Columbus
 19. City of Columbus
 20. City of Columbus
 21. City of Columbus
 22. City of Columbus
 23. City of Columbus
 24. City of Columbus
 25. City of Columbus
 26. City of Columbus
 27. City of Columbus
 28. City of Columbus
 29. City of Columbus
 30. City of Columbus
 31. City of Columbus
 32. City of Columbus
 33. City of Columbus
 34. City of Columbus
 35. City of Columbus
 36. City of Columbus
 37. City of Columbus
 38. City of Columbus
 39. City of Columbus
 40. City of Columbus
 41. City of Columbus
 42. City of Columbus
 43. City of Columbus
 44. City of Columbus
 45. City of Columbus
 46. City of Columbus
 47. City of Columbus
 48. City of Columbus
 49. City of Columbus
 50. City of Columbus
 51. City of Columbus
 52. City of Columbus
 53. City of Columbus
 54. City of Columbus
 55. City of Columbus
 56. City of Columbus
 57. City of Columbus
 58. City of Columbus
 59. City of Columbus
 60. City of Columbus
 61. City of Columbus
 62. City of Columbus
 63. City of Columbus
 64. City of Columbus
 65. City of Columbus
 66. City of Columbus
 67. City of Columbus
 68. City of Columbus
 69. City of Columbus
 70. City of Columbus
 71. City of Columbus
 72. City of Columbus
 73. City of Columbus
 74. City of Columbus
 75. City of Columbus
 76. City of Columbus
 77. City of Columbus
 78. City of Columbus
 79. City of Columbus
 80. City of Columbus
 81. City of Columbus
 82. City of Columbus
 83. City of Columbus
 84. City of Columbus
 85. City of Columbus
 86. City of Columbus
 87. City of Columbus
 88. City of Columbus
 89. City of Columbus
 90. City of Columbus
 91. City of Columbus
 92. City of Columbus
 93. City of Columbus
 94. City of Columbus
 95. City of Columbus
 96. City of Columbus
 97. City of Columbus
 98. City of Columbus
 99. City of Columbus
 100. City of Columbus



No.	Grantor	Grantee	Instrument	Date	Record	Cost. No.	Remarks
1	John P. H. Lines and wife, et al.	C O & T RR Co	Lease	Oct 20, 1892	DB 238 556	June 27, 1892	11073
2	Joe I Doran and wife,	C O & T RR Co	Lease	Apr 6, 1892	DB 237 58	Apr 27, 1892	11028
3	Frances A and Chas S. Reynolds	Joe I Doran,	Lease	Apr 27, 1892	DB 237 58	Apr 27, 1892	11028
4	Joe I Doran and wife,	C O & T RR Co	Lease	Apr 27, 1892	DB 238 136	June 5, 1892	11020
5	Robt. Bell and wife,	Joe I Doran,	Lease	Apr 26, 1892	DB 237 58	Apr 27, 1892	11028
6	Joe I Doran and wife,	C O & T RR Co	Lease	Apr 26, 1892	DB 237 58	Apr 27, 1892	11028
7	The Lumber Manufacturing Co.,	C O & T RR Co	Lease	Apr 26, 1892	DB 237 58	Apr 27, 1892	11028
8	Joe I Doran and wife,	C O & T RR Co	Lease	Apr 26, 1892	DB 237 58	Apr 27, 1892	11028
9	John W. Sig. Company	Joe I Doran,	Lease	Apr 26, 1892	DB 237 58	Apr 27, 1892	11028
10	Joe I Doran and wife,	C O & T RR Co	Lease	Apr 26, 1892	DB 237 58	Apr 27, 1892	11028
11	Jesse S. Dunn and wife,	Joe I Doran,	Lease	Apr 26, 1892	DB 237 58	Apr 27, 1892	11028
12	Joe I Doran and wife,	C O & T RR Co	Lease	Apr 26, 1892	DB 237 58	Apr 27, 1892	11028
13	Franklin J. Dickman and Moses H and Chas H Bell, Executors of will of Robt. Bell,	Joe I Doran,	Lease	Apr 26, 1892	DB 237 58	Apr 27, 1892	11028
14	Joe I Doran and wife,	C O & T RR Co	Lease	Apr 26, 1892	DB 237 58	Apr 27, 1892	11028
15	James Casey,	Joe I Doran,	Lease	Sept 30, 1892	DB 243 230	Nov 25, 1892	11009
16	Joe I Doran and wife,	C O & T RR Co	Lease	May 22, 1892	DB 237 58	June 7, 1892	11027
17	Conna Brown and wife,	Joe I Doran,	Lease	Sept 30, 1892	DB 243 230	Oct 27, 1892	11027
18	Joe I Doran and wife,	C O & T RR Co	Lease	May 12, 1892	DB 237 58	June 7, 1892	11027
19	Louise E. Ball and wife,	Joe I Doran,	Lease	Sept 30, 1892	DB 243 230	July 24, 1892	11027

No.	Grantor	Grantee	Instrument	Date	Record	Cost. No.	Remarks
1	City of Columbus	City Co	Instrument	Oct 10, 1892	DB	11010	Macatin, Brots and Broad Sta., see ordinance 13792
2	do	do	do	Oct 17, 1910	DB	11011	do
3	do	do	do	July 27, 1913	DB	11012	do
4	do	do	do	July 26, 1914	DB	11013	do
5	do	do	do	Oct 30, 1892	DB	11014	do
6	do	do	do	Oct 27, 1892	DB	11015	do
7	do	do	do	Oct 1, 1892	DB	11016	do

V-18-0
 S.L. 89
 Oct 1, 1923