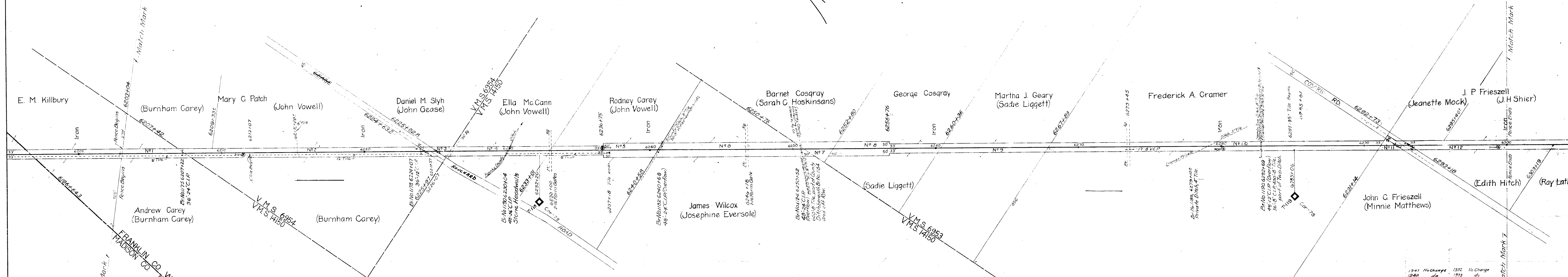


ROLL 8 IMAGE 1



SCHEDULE OF PROPERTY

No.	Creator	Grantee	Instrument	Date	Reg.	Vol.	Page	Acres
1	Andrew Carey	Andrew Carey	W. Dec.	1891	12	119	1	1.189
2	Mary C. Patch	Mary C. Patch	W. Dec.	1891	12	119	2	1.189
3	Daniel M. Slyh	Daniel M. Slyh	W. Dec.	1891	12	119	3	1.189
4	Ella McCann	Ella McCann	W. Dec.	1891	12	119	4	1.189
5	Rodney Carey	Rodney Carey	W. Dec.	1891	12	119	5	1.189
6	James Wilcox	James Wilcox	W. Dec.	1891	12	119	6	1.189
7	Barnett Cosgray	Barnett Cosgray	W. Dec.	1891	12	119	7	1.189
8	George Cosgray	George Cosgray	W. Dec.	1891	12	119	8	1.189
9	Martha J. Geary	Martha J. Geary	W. Dec.	1891	12	119	9	1.189
10	Frederick A. Cramer	Frederick A. Cramer	W. Dec.	1891	12	119	10	1.189
11	John C. Frieszell	John C. Frieszell	W. Dec.	1891	12	119	11	1.189
12	Jeanette Mock	Jeanette Mock	W. Dec.	1891	12	119	12	1.189
13	J. P. Frieszell	J. P. Frieszell	W. Dec.	1891	12	119	13	1.189
14	Edith Hitch	Edith Hitch	W. Dec.	1891	12	119	14	1.189
15	Ray Latham	Ray Latham	W. Dec.	1891	12	119	15	1.189

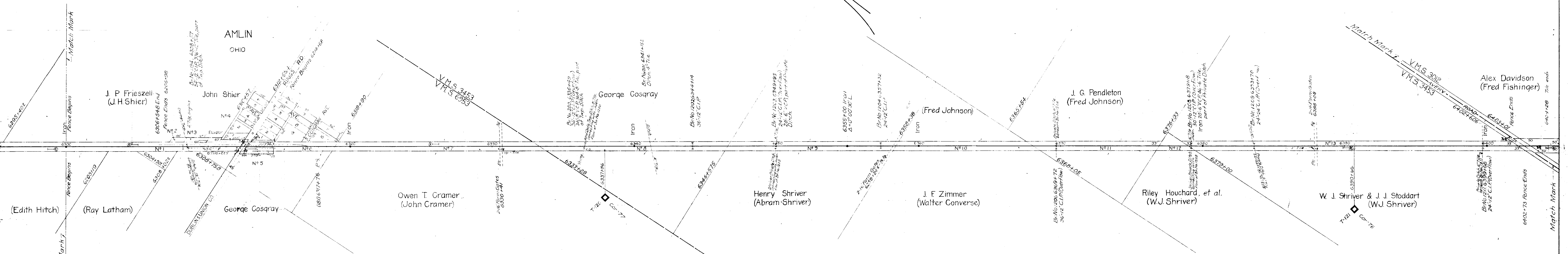
MADISON COUNTY FRANKLIN COUNTY
 DARBY TOWNSHIP WASHINGTON TOWNSHIP

THIS PROPERTY WAS MERGED WITH THE NEW YORK CENTRAL RAILROAD COMPANY

Year	Change	Year	Change
1941	No Change	1932	No Change
1940	do	1931	do
1939	do	1930	do
1938	do	1929	do
1937	do	1928	do
1936	do	1927	do
1935	do	1926	do
1934	do	1925	do
1933	do	1924	do
1932	do	1923	do
1931	do	1922	do
1930	do	1921	do
1929	do	1920	do
1928	do	1919	do
1927	do	1918	do
1926	do	1917	do
1925	do	1916	do
1924	do	1915	do
1923	do	1914	do
1922	do	1913	do
1921	do	1912	do
1920	do	1911	do
1919	do	1910	do
1918	do	1909	do
1917	do	1908	do
1916	do	1907	do
1915	do	1906	do
1914	do	1905	do
1913	do	1904	do
1912	do	1903	do
1911	do	1902	do
1910	do	1901	do
1909	do	1900	do
1908	do	1899	do
1907	do	1898	do
1906	do	1897	do
1905	do	1896	do
1904	do	1895	do
1903	do	1894	do
1902	do	1893	do
1901	do	1892	do
1900	do	1891	do
1899	do	1890	do
1898	do	1889	do
1897	do	1888	do
1896	do	1887	do
1895	do	1886	do
1894	do	1885	do
1893	do	1884	do
1892	do	1883	do
1891	do	1882	do
1890	do	1881	do
1889	do	1880	do
1888	do	1879	do
1887	do	1878	do
1886	do	1877	do
1885	do	1876	do
1884	do	1875	do
1883	do	1874	do
1882	do	1873	do
1881	do	1872	do
1880	do	1871	do
1879	do	1870	do
1878	do	1869	do
1877	do	1868	do
1876	do	1867	do
1875	do	1866	do
1874	do	1865	do
1873	do	1864	do
1872	do	1863	do
1871	do	1862	do
1870	do	1861	do
1869	do	1860	do
1868	do	1859	do
1867	do	1858	do
1866	do	1857	do
1865	do	1856	do
1864	do	1855	do
1863	do	1854	do
1862	do	1853	do
1861	do	1852	do
1860	do	1851	do
1859	do	1850	do
1858	do	1849	do
1857	do	1848	do
1856	do	1847	do
1855	do	1846	do
1854	do	1845	do
1853	do	1844	do
1852	do	1843	do
1851	do	1842	do
1850	do	1841	do
1849	do	1840	do
1848	do	1839	do
1847	do	1838	do
1846	do	1837	do
1845	do	1836	do
1844	do	1835	do
1843	do	1834	do
1842	do	1833	do
1841	do	1832	do
1840	do	1831	do
1839	do	1830	do
1838	do	1829	do
1837	do	1828	do
1836	do	1827	do
1835	do	1826	do
1834	do	1825	do
1833	do	1824	do
1832	do	1823	do
1831	do	1822	do
1830	do	1821	do
1829	do	1820	do
1828	do	1819	do
1827	do	1818	do
1826	do	1817	do
1825	do	1816	do
1824	do	1815	do
1823	do	1814	do
1822	do	1813	do
1821	do	1812	do
1820	do	1811	do
1819	do	1810	do
1818	do	1809	do
1817	do	1808	do
1816	do	1807	do
1815	do	1806	do
1814	do	1805	do
1813	do	1804	do
1812	do	1803	do
1811	do	1802	do
1810	do	1801	do
1809	do	1800	do
1808	do	1799	do
1807	do	1798	do
1806	do	1797	do
1805	do	1796	do
1804	do	1795	do
1803	do	1794	do
1802	do	1793	do
1801	do	1792	do
1800	do	1791	do
1799	do	1790	do
1798	do	1789	do
1797	do	1788	do
1796	do	1787	do
1795	do	1786	do
1794	do	1785	do
1793	do	1784	do
1792	do	1783	do
1791	do	1782	do
1790	do	1781	do
1789	do	1780	do
1788	do	1779	do
1787	do	1778	do
1786	do	1777	do
1785	do	1776	do
1784	do	1775	do
1783	do	1774	do
1782	do	1773	do
1781	do	1772	do
1780	do	1771	do
1779	do	1770	do
1778	do	1769	do
1777	do	1768	do
1776	do	1767	do
1775	do	1766	do
1774	do	1765	do
1773	do	1764	do
1772	do	1763	do
1771	do	1762	do
1770	do	1761	do
1769	do	1760	do
1768	do	1759	do
1767	do	1758	do
1766	do	1757	do
1765	do	1756	do
1764	do	1755	do
1763	do	1754	do
1762	do	1753	do
1761	do	1752	do
1760	do	1751	do
1759	do	1750	do
1758	do	1749	do
1757	do	1748	do
1756	do	1747	do
1755	do	1746	do
1754	do	1745	do
1753	do	1744	do
1752	do	1743	do
1751	do	1742	do
1750	do	1741	do
1749	do	1740	do
1748	do	1739	do
1747	do	1738	do
1746	do	1737	do
1745	do	1736	do
1744	do	1735	do
1743	do	1734	do
1742	do	1733	do
1741	do	1732	do
1740	do	1731	do
1739	do	1730	do
1738	do	1729	do
1737	do	1728	do
1736	do	1727	do
1735	do	1726	do
1734	do	1725	do
1733	do	1724	do
1732	do	1723	do
1731	do	1722	do
1730	do	1721	do
1729	do	1720	do
1728	do	1719	do
1727	do	1718	do
1726	do	1717	do
1725	do	1716	do
1724	do	1715	do
1723	do	1714	do
1722	do	1713	do
1721	do	1712	do
1720	do	1711	do
1719	do	1710	do
1718	do	1709	do
1717	do	1708	do
1716	do	1707	do
1715	do	1706	do
1714	do	1705	do
1713	do	1704	do
1712	do	1703	do
1711	do	1702	do
1710	do	1701	do
1709	do	1700	do
1708	do	1699	do
1707	do	1698	do
1706	do	1697	do
1705	do	1696	do
1704	do	1695	do
1703	do	1694	do
1702	do	1693	do
1701	do	1692	do
1700	do	1691	do
1699	do	1690	do
1698	do	1689	do
1697	do	1688	do
1696	do	1687	do
1695	do	1686	do
1694	do	1685	do
1693	do	1684	do
1692	do	1683	do
1691	do	1682	do
1690	do	1681	do
1689	do	1680	do
1688	do	1679	do
1687	do	1678	do
1686	do	1677	do

ROLL 8 IMAGE 2

ROLL 8 IMAGE 3



SCHEDULE OF PROPERTIES

No.	Grantor	Grantee	Instrument	Date	Record	Dist. No.	Remarks
1	Joshua P. Frieszell	T & O C Ry Co	A. Deed	Apr 23, 1897	DB V245 P400	Apr 12, 1893	436-2 This is a part of parcel #12 map 61
2	Joshua P. Frieszell	T & O C Ry Co	Deed	Apr 23, 1897	DB V1293 P443	June 4, 1946	436-3
3	Joshua P. Frieszell	T & O C Ry Co	Deed	Apr 4, 1894	DB V1299 P444	June 4, 1946	436-4
4	No paper title found	Hold by adverse possession and title	Deed by Ry Co	Feb 8, 1896	DB V311 P408	Feb 11, 1895	436-5
5	Geo. Cosgray	T & O C Ry Co	A. Deed	Apr 7, 1895	DB V444 P436	Apr 11, 1893	436-7
6	Geo. Cosgray	T & O C Ry Co	A. Deed	Apr 7, 1895	DB V245 P400	Apr 11, 1893	436-8
7	Owen T. Cramer	T & O C Ry Co	W. Deed	Apr 12, 1914	DB V247 P443	Apr 18, 1906	436-19
8	This parcel conveyed in same deed as parcel #7						436-19
9	Henry Shriver	T & O C Ry Co	A. Deed	July 17, 1893	DB V245 P400	Apr 11, 1893	436-20
10	John W. Zimmer	T & O C Ry Co	Condemnation	June 24, 1892	DB V245 P400	Apr 11, 1893	436-21
11	J. G. Pendleton	T & O C Ry Co	Condemnation	June 24, 1892	DB V245 P400	Apr 11, 1893	436-21
12	Riley Houchard et al	T & O C Ry Co	W. Deed	Apr 12, 1893	DB V245 P400	Apr 11, 1893	436-22
13	W. J. Shriver and John W. Zimmer	T & O C Ry Co	Condemnation	June 24, 1892	DB V245 P400	Apr 11, 1893	436-23
14	Edith R. Finch et al	T & O C Ry Co	W. Deed	Dec 1, 1946	AFE 68233		436-24

FRANKLIN COUNTY
WASHINGTON TOWNSHIP

THIS PROPERTY WAS MERGED WITH THE NEW YORK CENTRAL RAILROAD COMPANY

DECEASED JUNE 18, 1952

AUTHORIZED IN I. C. C. DOCKET NO. 17700

DECEASED JUNE 18, 1952

RIGHT OF WAY AND TRACK MAP

1947	No Change				
1948	do				
1949	do	1932	No Change	1938	No Change
1950	2-15-52	1933	do	1939	1/1/29 L.D.D.
1951	No Change	1934	do	1940	1/1/29 L.D.D.
1952	3-6-54	1935	do	1941	No Change
1953	No Change	1936	do	1942	No Change
1954	do	1937	do	1943	No Change
1955	do	1938	do	1944	No Change
1956	do	1939	do	1945	No Change
1957	do	1940	do	1946	No Change
1958	1-19-50	1941	do	1947	No Change
1959	do	1942	do	1948	No Change
1960	do	1943	do	1949	No Change
1961	do	1944	do	1950	No Change
1962	do	1945	do	1951	No Change
1963	do	1946	do	1952	No Change
1964	3-16-48	1947	do	1953	No Change

THE TOLEDO AND OHIO CENTRAL RAILWAY
OPERATED BY
THE TOLEDO AND OHIO CENTRAL RAILWAY COMPANY

WESTERN DIVISION -- MAIN LINE

FROM STATION 6300+00 TO STATION 6402+60.6

SCALE 1 INCH = 200 FEET

JUNE 30, 1918

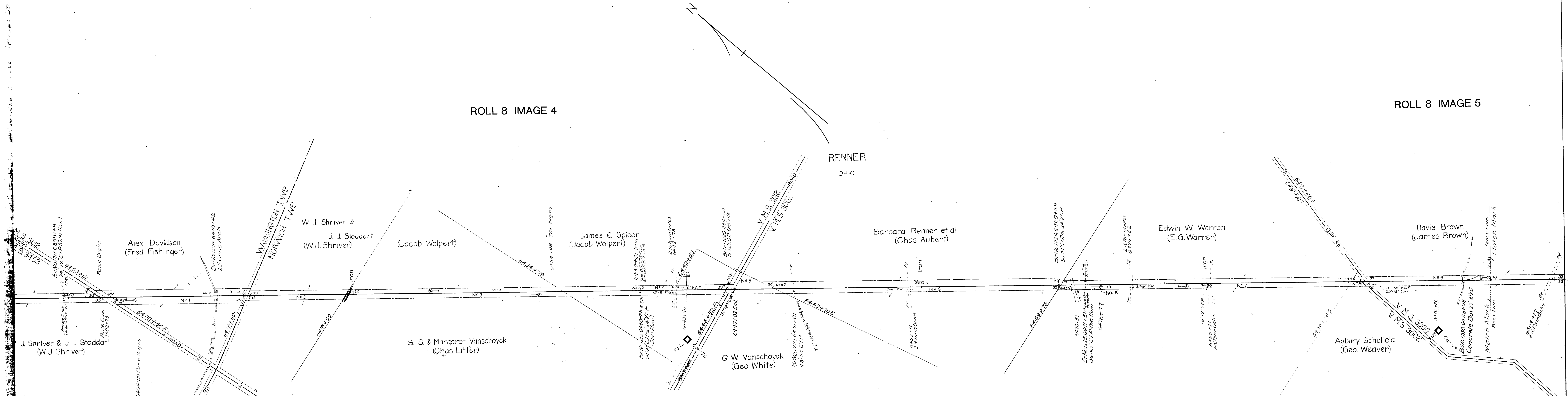
OFFICE OF VALUATION ENGINEER, COLUMBUS, OHIO

CONNECTION AS OF JAN 1 1918
OFFICE OF VALUATION ENGINEER, LEBANON, OHIO

V-302
62
V-2
62

ROLL 8 IMAGE 4

ROLL 8 IMAGE 5



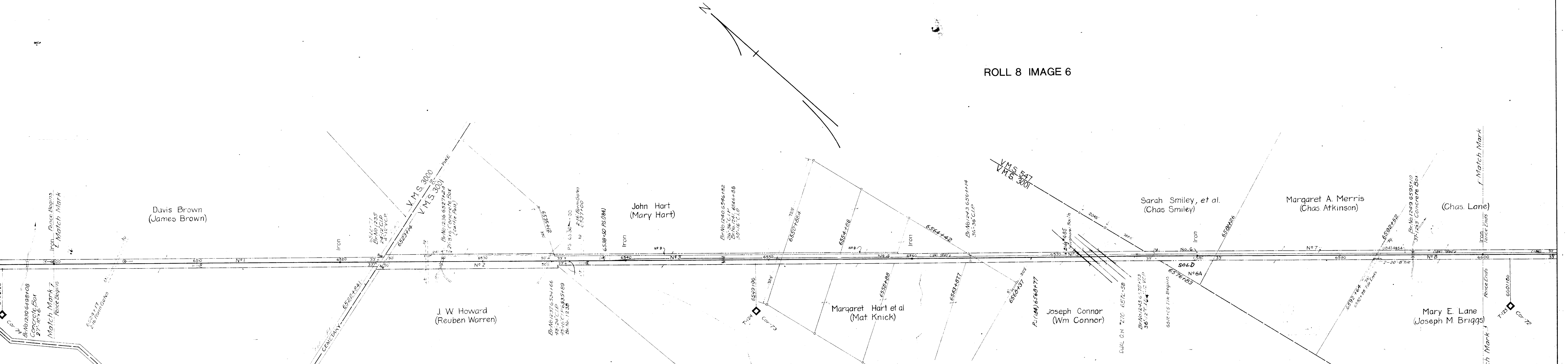
Grantor	Grantee	Instrument	Date	Record	Dist. No.	Book	Page
Alexander Davidson	W. J. Shriver and John J. Stoddart	W. Deed	Apr 7 1893	DB 7445 P598	Apr 11 1893	248	24
Wm. J. Shriver and John J. Stoddart	W. Deed	Ordnance	June 24 1893	Probate Court Case	7799	241	25
Sylvester S. Vanschoyck	W. Deed	W. Deed	Apr 7 1893	DB 7188 P598	Sept 30 1893	245	26
James C. Spicer	W. Deed	W. Deed	Apr 12 1893	DB 7247 P446	Apr 16 1893	244	26
Geo. W. Vanschoyck	W. Deed	W. Deed	Apr 12 1893	DB 7247 P447	Apr 16 1893	245	27
Barbara Renner	W. Deed	W. Deed	May 21 1893	DB 7189 P598	Aug 7 1893	246	28
Edwin W. Warren	W. Deed	W. Deed	June 1 1893	DB 7252 P446	July 11 1893	244	29
Asbury Schofield	W. Deed	W. Deed	May 12 1893	DB 7252 P447	July 11 1893	245	30
Mae L. Weaver	W. Deed	W. Deed	Sept 16 1943	Complete Record	151	A.F.S. 62732	

FRANKLIN COUNTY
WASHINGTON TOWNSHIP
NORWICH TOWNSHIP

Year	Change	Year	Change	Year	Change
1947	No Change	1932	No Change	1918	No Change
1946	do	1931	do	1917	L.O.D.
1945	do	1930	do	1916	L.O.D.
1944	do	1929	do	1915	L.O.D.
1943	do	1928	do	1914	L.O.D.
1942	do	1927	do	1913	No Change
1941	do	1926	do	1912	No Change
1940	do	1925	do	1911	No Change
1939	do	1924	do	1910	No Change
1938	do	1923	do	1909	No Change
1937	do	1922	do	1908	No Change
1936	do	1921	do	1907	No Change
1935	do	1920	do	1906	No Change
1934	do	1919	do	1905	No Change
1933	do	1918	do	1904	No Change
1932	do	1917	do	1903	No Change
1931	do	1916	do	1902	No Change
1930	do	1915	do	1901	No Change
1929	do	1914	do	1900	No Change
1928	do	1913	do	1899	No Change
1927	do	1912	do	1898	No Change
1926	do	1911	do	1897	No Change
1925	do	1910	do	1896	No Change
1924	do	1909	do	1895	No Change
1923	do	1908	do	1894	No Change
1922	do	1907	do	1893	No Change
1921	do	1906	do	1892	No Change
1920	do	1905	do	1891	No Change
1919	do	1904	do	1890	No Change
1918	do	1903	do	1889	No Change
1917	do	1902	do	1888	No Change
1916	do	1901	do	1887	No Change
1915	do	1900	do	1886	No Change
1914	do	1899	do	1885	No Change
1913	do	1898	do	1884	No Change
1912	do	1897	do	1883	No Change
1911	do	1896	do	1882	No Change
1910	do	1895	do	1881	No Change
1909	do	1894	do	1880	No Change
1908	do	1893	do	1879	No Change
1907	do	1892	do	1878	No Change
1906	do	1891	do	1877	No Change
1905	do	1890	do	1876	No Change
1904	do	1889	do	1875	No Change
1903	do	1888	do	1874	No Change
1902	do	1887	do	1873	No Change
1901	do	1886	do	1872	No Change
1900	do	1885	do	1871	No Change
1899	do	1884	do	1870	No Change
1898	do	1883	do	1869	No Change
1897	do	1882	do	1868	No Change
1896	do	1881	do	1867	No Change
1895	do	1880	do	1866	No Change
1894	do	1879	do	1865	No Change
1893	do	1878	do	1864	No Change
1892	do	1877	do	1863	No Change
1891	do	1876	do	1862	No Change
1890	do	1875	do	1861	No Change
1889	do	1874	do	1860	No Change
1888	do	1873	do	1859	No Change
1887	do	1872	do	1858	No Change
1886	do	1871	do	1857	No Change
1885	do	1870	do	1856	No Change
1884	do	1869	do	1855	No Change
1883	do	1868	do	1854	No Change
1882	do	1867	do	1853	No Change
1881	do	1866	do	1852	No Change
1880	do	1865	do	1851	No Change
1879	do	1864	do	1850	No Change
1878	do	1863	do	1849	No Change
1877	do	1862	do	1848	No Change
1876	do	1861	do	1847	No Change
1875	do	1860	do	1846	No Change
1874	do	1859	do	1845	No Change
1873	do	1858	do	1844	No Change
1872	do	1857	do	1843	No Change
1871	do	1856	do	1842	No Change
1870	do	1855	do	1841	No Change
1869	do	1854	do	1840	No Change
1868	do	1853	do	1839	No Change
1867	do	1852	do	1838	No Change
1866	do	1851	do	1837	No Change
1865	do	1850	do	1836	No Change
1864	do	1849	do	1835	No Change
1863	do	1848	do	1834	No Change
1862	do	1847	do	1833	No Change
1861	do	1846	do	1832	No Change
1860	do	1845	do	1831	No Change
1859	do	1844	do	1830	No Change
1858	do	1843	do	1829	No Change
1857	do	1842	do	1828	No Change
1856	do	1841	do	1827	No Change
1855	do	1840	do	1826	No Change
1854	do	1839	do	1825	No Change
1853	do	1838	do	1824	No Change
1852	do	1837	do	1823	No Change
1851	do	1836	do	1822	No Change
1850	do	1835	do	1821	No Change
1849	do	1834	do	1820	No Change
1848	do	1833	do	1819	No Change
1847	do	1832	do	1818	No Change
1846	do	1831	do	1817	No Change
1845	do	1830	do	1816	No Change
1844	do	1829	do	1815	No Change
1843	do	1828	do	1814	No Change
1842	do	1827	do	1813	No Change
1841	do	1826	do	1812	No Change
1840	do	1825	do	1811	No Change
1839	do	1824	do	1810	No Change
1838	do	1823	do	1809	No Change
1837	do	1822	do	1808	No Change
1836	do	1821	do	1807	No Change
1835	do	1820	do	1806	No Change
1834	do	1819	do	1805	No Change
1833	do	1818	do	1804	No Change
1832	do	1817	do	1803	No Change
1831	do	1816	do	1802	No Change
1830	do	1815	do	1801	No Change
1829	do	1814	do	1800	No Change
1828	do	1813	do	1799	No Change
1827	do	1812	do	1798	No Change
1826	do	1811	do	1797	No Change
1825	do	1810	do	1796	No Change
1824	do	1809	do	1795	No Change
1823	do	1808	do	1794	No Change
1822	do	1807	do	1793	No Change
1821	do	1806	do	1792	No Change
1820	do	1805	do	1791	No Change
1819	do	1804	do	1790	No Change
1818	do	1803	do	1789	No Change
1817	do	1802	do	1788	No Change
1816	do	1801	do	1787	No Change
1815	do	1800	do	1786	No Change
1814	do	1799	do	1785	No Change
1813	do	1798	do	1784	No Change
1812	do	1797	do	1783	No Change
1811	do	1796	do	1782	No Change
1810	do	1795	do	1781	No Change
1809	do	1794	do	1780	No Change
1808	do	1793	do	1779	No Change
1807	do	1792	do	1778	No Change
1806	do	1791	do	1777	No Change
1805	do	1790	do	1776	No Change
1804	do	1789	do	1775	No Change
1803	do	1788	do	1774	No Change
1802	do	1787	do	1773	No Change
1801	do	1786	do	1772	No Change
1800	do	1785	do	1771	No Change
1799	do	1784	do	1770	No Change
1798	do	1783	do	1769	No Change
1797	do	1782	do	1768	No Change
1796	do	1781	do	1767	No Change
1795	do	1780	do	1766	No Change
1794	do	1779	do	1765	No Change
1793	do	1778	do	1764	No Change
1792	do	1777	do	1763	No Change
1791	do	1776	do	1762	No Change
1790	do	1775	do	1761	No Change
1789	do	1774	do	1760	No Change
1788	do	1773	do	1759	No Change
1787	do	1772	do	1758	No Change
1786	do	1771	do	1757	No Change
1785	do	1770	do	1756	No Change
1784	do	1769	do	1755	No Change
1783	do	1768	do	1754	No Change
1782	do	1767	do	1753	No Change
1781	do	1766	do	1752	No Change
1780	do	1765	do	1751	No Change
1779	do	1764	do	1750	No Change
1778	do	1763	do	1749	No Change
1777	do	1762	do	1748	No Change
1776	do	1761	do	1747	No Change
1775	do	1760	do	1746	No Change
1774	do	1759	do	1745	No Change
1773	do	1758	do	1744	No Change
1772	do	1757	do	1743	No Change
1771	do	1756	do	1742	No Change
1770	do	1755	do	1741	No Change
1769	do	1754	do	1740	No Change
1768	do	1753	do	1739	No Change
1767	do	1752	do	1738	No Change
1766	do	1751	do	1737	No Change
1765	do	1750	do	1736	No Change
1764	do	1749	do	1735	No Change
1763	do	1748	do	1734	No Change
1762	do	1747	do	1733	No Change
1761	do	1746	do	1732	No Change
1760	do	1745	do	1731	No Change
1759	do	1744	do	1730	No Change
1758	do	1743	do	1	

NO	GRANTOR	GRANTEE	SCHEDULE OF PROPERTY (CONT.)	DATE	RECORD	CUSTOMER	REMARKS
9	CHARLES E. VIDT	NYC.R.R.CO.	W DEED	JAN. 25, 1947	V. 240, P. 447		

ROLL 8 IMAGE 6



NO	OWNER	DATE	DESCRIPTION	RECORD	REMARKS
1	Davis Brown	1947	Deed	V. 240, P. 447	part of parcel #...
2	John W. Howard	1947	Deed	V. 240, P. 447	
3	John Hart	1947	Deed	V. 240, P. 447	
4	Margaret Hart et al	1947	Deed	V. 240, P. 447	
5	Joseph Connor	1947	Deed	V. 240, P. 447	
6	Sarah Smiley, et al	1947	Deed	V. 240, P. 447	
7	Margaret A. Merris	1947	Deed	V. 240, P. 447	
8	Mary E. Lane	1947	Deed	V. 240, P. 447	
9	NYC.R.R.Co.	1947	Deed	V. 240, P. 447	

FRANKLIN COUNTY
NORWICH TOWNSHIP

THE PROPERTY WAS MERGED WITH
THE NEW YORK CENTRAL
RAILROAD COMPANY
JUNE 30, 1952

APPROVED IN L. C. DOCKET NO. 17700
RECORDED JUNE 10, 1952

RIGHT OF WAY AND TRACK MAP
THE TOLEDO AND OHIO CENTRAL RAILWAY

OPERATED BY
THE TOLEDO AND OHIO CENTRAL RAILWAY COMPANY

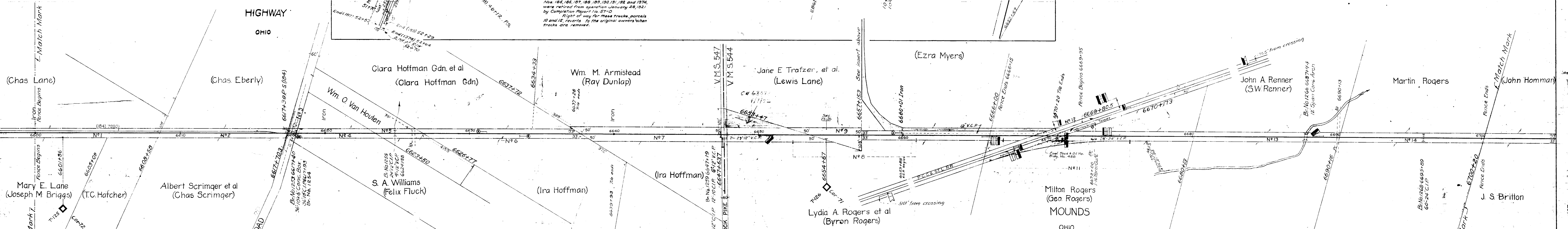
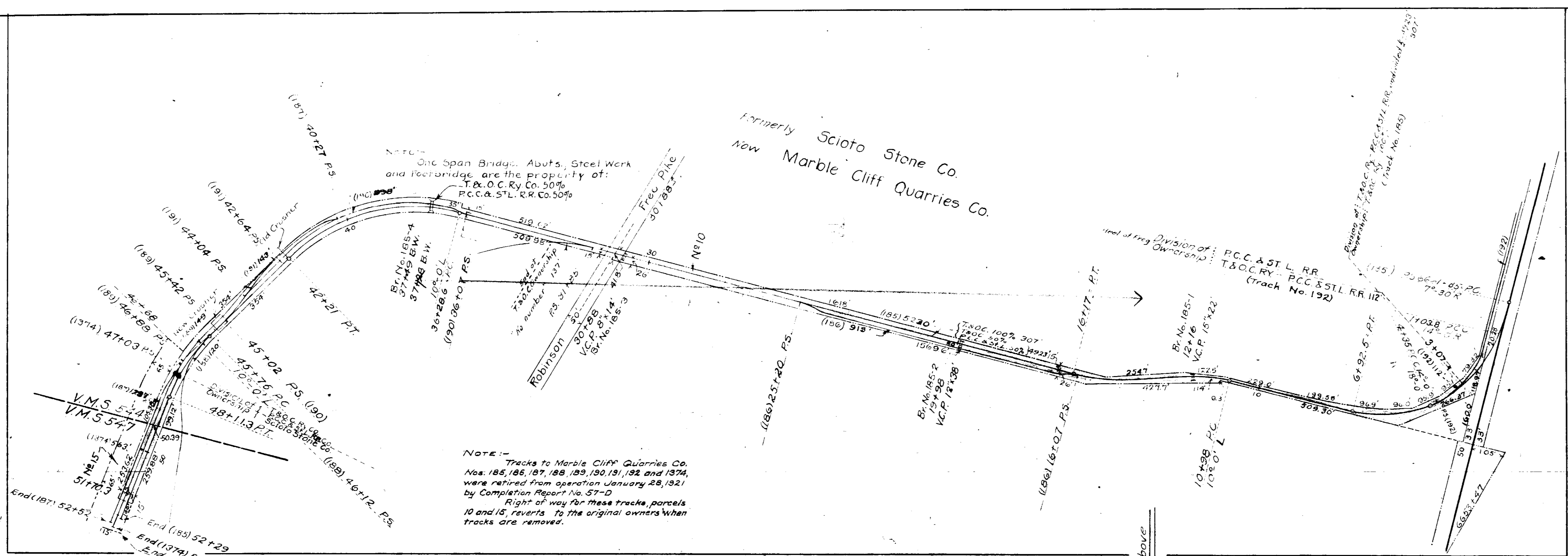
Year	Change	Year	Change	Year	Change
1947	No Change	1952	No Change	1958	No Change
1948	do	1953	do	1959	No Change
1949	do	1954	do	1960	No Change
1950	do	1955	do	1961	No Change
1951	do	1956	do	1962	No Change
1952	3-5-54	1957	do	1963	No Change
1953	No Change	1958	do	1964	No Change
1954	do	1959	do	1965	No Change
1955	do	1960	do	1966	No Change
1956	do	1961	do	1967	No Change
1957	do	1962	do	1968	No Change
1958	do	1963	do	1969	No Change
1959	do	1964	do	1970	No Change
1960	do	1965	do	1971	No Change
1961	do	1966	do	1972	No Change
1962	do	1967	do	1973	No Change
1963	do	1968	do	1974	No Change
1964	do	1969	do	1975	No Change
1965	do	1970	do	1976	No Change
1966	do	1971	do	1977	No Change
1967	do	1972	do	1978	No Change
1968	do	1973	do	1979	No Change
1969	do	1974	do	1980	No Change
1970	do	1975	do	1981	No Change
1971	do	1976	do	1982	No Change
1972	do	1977	do	1983	No Change
1973	do	1978	do	1984	No Change
1974	do	1979	do	1985	No Change
1975	do	1980	do	1986	No Change
1976	do	1981	do	1987	No Change
1977	do	1982	do	1988	No Change
1978	do	1983	do	1989	No Change
1979	do	1984	do	1990	No Change
1980	do	1985	do	1991	No Change
1981	do	1986	do	1992	No Change
1982	do	1987	do	1993	No Change
1983	do	1988	do	1994	No Change
1984	do	1989	do	1995	No Change
1985	do	1990	do	1996	No Change
1986	do	1991	do	1997	No Change
1987	do	1992	do	1998	No Change
1988	do	1993	do	1999	No Change
1989	do	1994	do	2000	No Change
1990	do	1995	do		

SHEET NO. 67 OF 115
BY THE TOLEDO AND OHIO CENTRAL RAILWAY
WESTERN DIVISION - MAIN LINE
FROM STATION 6500+00 TO STATION 6600+00
SCALE 1 INCH = 200 FEET
JUNE 30, 1918
OFFICE OF VALUATION ENGINEER COLUMBUS OHIO

V-302
64
11-31
V-302
64

ROLL 8 IMAGE 7

ROLL 8 IMAGE 8



SCHEDULE OF PROPERTY

No.	Grantor	Grantor	Instrument	Date	Record	Cont. No.	Notes
1	Mary E. Lane	T & O C Ry Co	W. Deed	Apr 12, 1893	DB 7247 1411	Apr 18, 1893	46430 This is a part of parcel #1
2	Albert Scrimger, et al	T & O C Ry Co	Condemnation	July 15, 1893	Probate Court Case #7977 75839	Sept 5, 1893	and #8195 Complete
3	S. A. Williams	T & O C Ry Co	W. Deed	May 25, 1893	DB 7251 1171	June 5, 1893	76640
4	Wm. O. Van Houten	T & O C Ry Co	W. Deed	May 25, 1893	DB 7251 1171	June 5, 1893	76640
5	Clara Hoffman, et al	T & O C Ry Co	W. Deed	Mar 24, 1893	DB 7181 1111	June 11, 1893	76642
6	Clara Hoffman, et al	T & O C Ry Co	W. Deed	June 17, 1893	DB 7252 1124	July 11, 1893	76643
7	Wm. M. Armistead	T & O C Ry Co	W. Deed	Apr 15, 1893	DB 7045 1140	Apr 12, 1893	76644
8	John A. Rogers, et al	T & O C Ry Co	W. Deed	May 8, 1893	DB 7049 1117	June 8, 1893	76645
9	Jane E. Trafzer, et al	T & O C Ry Co	W. Deed	Apr 24, 1893	DB 7248 1114	June 11, 1893	76646
10	Scioto Stone Co	T & O C Ry Co & STL Ry Co	W. Deed	Apr 26, 1912	DB 7432 1130	June 11, 1912	76647 - See Note No. 1
11	Milton Rogers	T & O C Ry Co	W. Deed	June 4, 1913	DB 7440 1130	July 24, 1913	76648 - See Note No. 1
12	P. C. & S. L. Ry Co	T & O C Ry Co	Agreement	July 26, 1893	DB 7439 1124	Apr 29, 1893	76649 - See Note No. 1
13	John A. Renner	T & O C Ry Co	Condemnation	July 25, 1893	DB 7438 1124	July 25, 1893	76650 - See Note No. 1
14	Martin Rogers	T & O C Ry Co	Condemnation	July 25, 1893	Probate Court Case #1111	Complete Records - Vol. 1, 1880	76651 - See Note No. 1
15	The Scioto Stone Co. and The Ohio Portland Cement Co.	T & O C Ry Co	Agreement for R of W	Oct 1, 1903	Chief Engr's Agreement #42		See Note No. 1

Note - No. 1 - Parcels Nos. 10 and 15 revert to original owners when tracks are removed. Tracks removed Jan. 28, 1921.

THIS PROPERTY WAS MERGED WITH THE NEW YORK CENTRAL RAILROAD COMPANY

JUNE 30, 1952
AUTHORIZED IN L. C. P. DOCKET NO. 17700
DECEMBER 16, 1952

Year	Change	Year	Change
1947	No Change	1932	No Change
1948	do	1933	do
1949	do	1934	do
1950	do	1935	do
1951	do	1936	do
1952	3 5-54	1937	do
1953	No Change	1938	do
1954	do	1939	do
1955	do	1940	do
1956	do	1941	do
1957	do	1942	do
1958	do	1943	do
1959	do	1944	do
1960	do	1945	do
1961	do	1946	do
1962	do	1947	do
1963	do	1948	do
1964	do	1949	do
1965	do	1950	do
1966	do	1951	do
1967	do	1952	do
1968	do	1953	do
1969	do	1954	do
1970	do	1955	do
1971	do	1956	do
1972	do	1957	do
1973	do	1958	do
1974	do	1959	do
1975	do	1960	do

THE TOLEDO AND OHIO CENTRAL RAILWAY
OPERATED BY
THE TOLEDO AND OHIO CENTRAL RAILWAY COMPANY

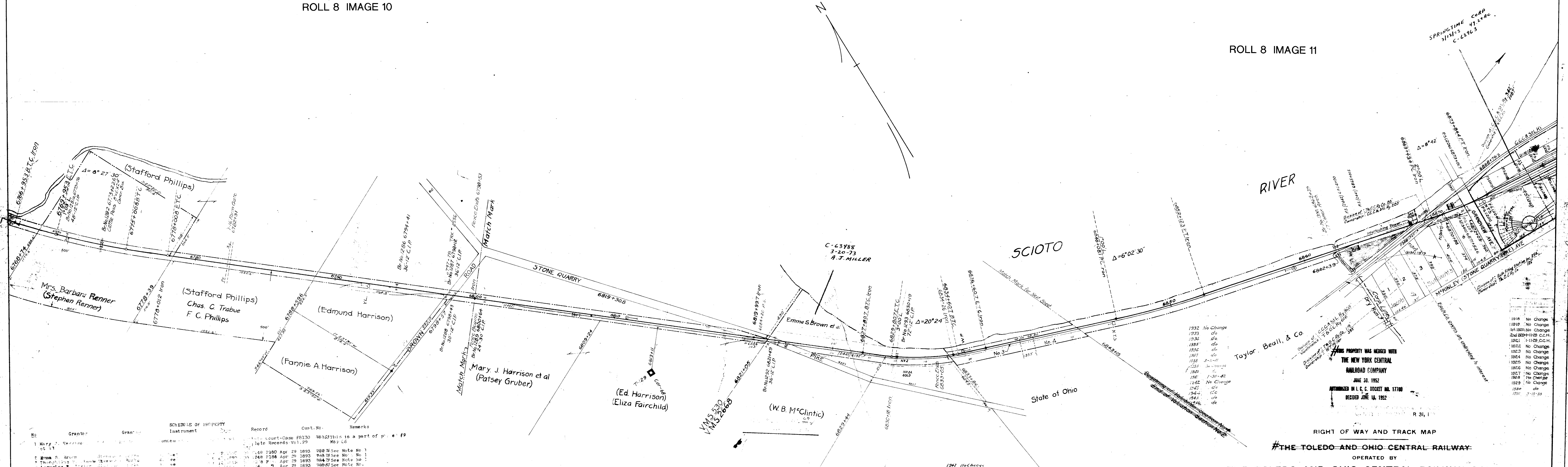
FRANKLIN COUNTY
NORWICH TOWNSHIP

68 115
SHEET NO. 68 OF 115 OF THE TOLEDO AND OHIO CENTRAL RAILWAY
WESTERN DIVISION - MAIN LINE
FROM SURVEY STATION 6600+00 TO SURVEY STATION 6700+20
H. J. DeYoung
VALUATION ENGINEER

WESTERN DIVISION - MAIN LINE
FROM STATION 6600+00 TO STATION 6700+20
SCALE 1 INCH = 200 FEET
JUNE 30, 1918

OFFICE OF VALUATION ENGINEER, COLUMBUS, OHIO.
OPERATED BY THE TOLEDO AND OHIO CENTRAL RAILWAY COMPANY
COMPLETION REPORT TO DECEMBER 31, 1921
CORRECTED AS OF JAN. 1, 1922
OFFICE OF VALUATION ENGINEER, CLEVELAND, OHIO.

V-302
65
V-2
65



SCHEDULE OF PROPERTY

No.	Grantor	Grantee	Instrument	Record	Cust. No.	Remarks
1	Mary J. Harrison et al		1885	1885	7613	This is a part of p. e. 19
2	Edmund Harrison		1885	1885	7613	See Note No. 1
3	Stafford Phillips		1885	1885	7613	See Note No. 1
4	Stafford Phillips		1885	1885	7613	See Note No. 1
5	Stafford Phillips		1885	1885	7613	See Note No. 1
6	Stafford Phillips		1885	1885	7613	See Note No. 1
7	Stafford Phillips		1885	1885	7613	See Note No. 1
8	Stafford Phillips		1885	1885	7613	See Note No. 1
9	Stafford Phillips		1885	1885	7613	See Note No. 1
10	Stafford Phillips		1885	1885	7613	See Note No. 1

FRANKLIN COUNTY
FRANKLIN TOWNSHIP

1916 No Change
1919 No Change
1820 No Change
1821 No Change
1822 No Change
1823 No Change
1824 No Change
1825 No Change
1826 No Change
1827 No Change
1828 No Change
1829 No Change
1830 No Change
1831 No Change
1832 No Change
1833 No Change
1834 No Change
1835 No Change
1836 No Change
1837 No Change
1838 No Change
1839 No Change
1840 No Change
1841 No Change
1842 No Change
1843 No Change
1844 No Change
1845 No Change
1846 No Change

THIS PROPERTY WAS MERGED WITH
THE NEW YORK CENTRAL RAILROAD COMPANY
JUNE 30, 1952
AUTHORIZED IN L. C. DOCKET NO. 17700
DECIDED JUNE 18, 1952

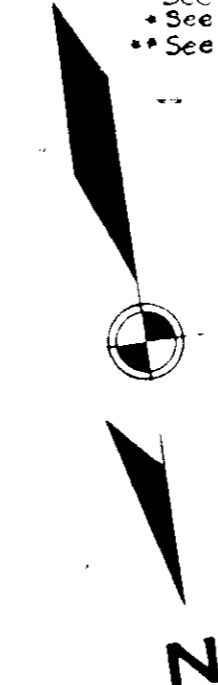
R 31, I

RIGHT OF WAY AND TRACK MAP
THE TOLEDO AND OHIO CENTRAL RAILWAY
OPERATED BY
THE TOLEDO AND OHIO CENTRAL RAILWAY COMPANY
WESTERN DIVISION -- MAIN LINE
FROM STATION 6800+00 TO STATION 6843+15
SCALE 1 INCH = 200 FEET
JUNE 30, 1918
OFFICE OF VALUATION ENGINEER, COLUMBUS, OHIO
SHORT STATION - Sta. 6839 + Sta. 6840 + 99.5
CORRECTED AS OF JAN. 1, 1901
OFFICE OF VALUATION ENGINEER, COLUMBUS, OHIO

ROLL 8 IMAGE 13

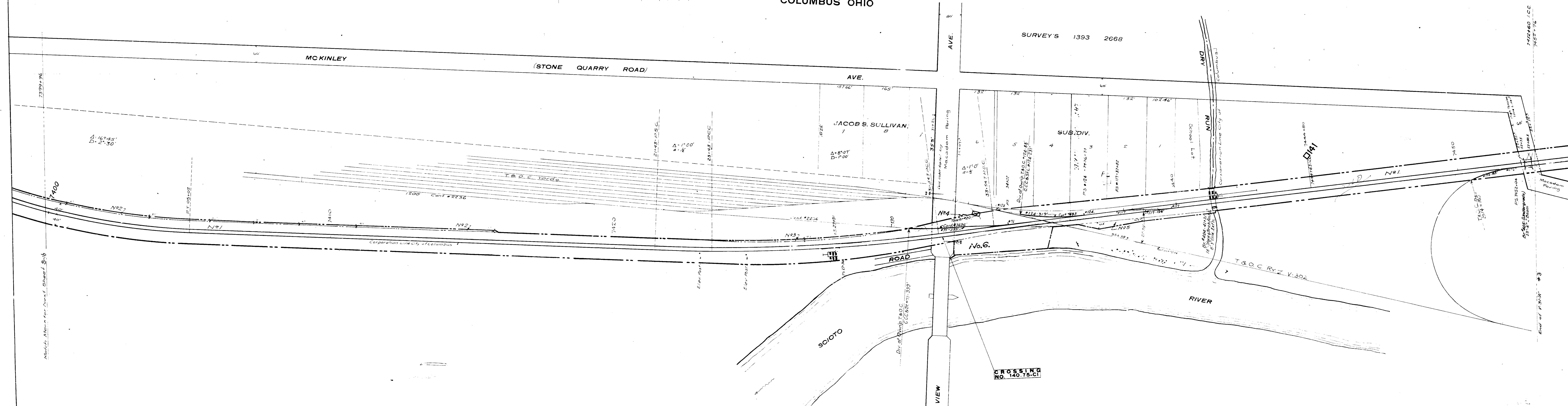
Item	A.F.E.	Completion Report
Div. 205-25' 6" Beam Rest. to Gr. Span	AF 1189	11/15/70
Const. Second Main Extend Bridges etc.	AF 1466	1/13/22
Ref. Tr. W. T. Const. Tr. # 805.231	AF 3727	1/13/22
1st. Main Extend. Const. of Columbus Ave.	721	1/21/23
Rep. work on 2nd. Main extend. Bridge	722	1/21/23
Rep. work on 1st. Main extend. Bridge	723	1/21/23
Rep. work on 3rd. Main extend. Bridge	724	1/21/23
Rep. work on 4th. Main extend. Bridge	725	1/21/23
Rep. work on 5th. Main extend. Bridge	726	1/21/23
Rep. work on 6th. Main extend. Bridge	727	1/21/23
Rep. work on 7th. Main extend. Bridge	728	1/21/23
Rep. work on 8th. Main extend. Bridge	729	1/21/23
Rep. work on 9th. Main extend. Bridge	730	1/21/23
Rep. work on 10th. Main extend. Bridge	731	1/21/23
Rep. work on 11th. Main extend. Bridge	732	1/21/23
Rep. work on 12th. Main extend. Bridge	733	1/21/23
Rep. work on 13th. Main extend. Bridge	734	1/21/23
Rep. work on 14th. Main extend. Bridge	735	1/21/23
Rep. work on 15th. Main extend. Bridge	736	1/21/23
Rep. work on 16th. Main extend. Bridge	737	1/21/23
Rep. work on 17th. Main extend. Bridge	738	1/21/23
Rep. work on 18th. Main extend. Bridge	739	1/21/23
Rep. work on 19th. Main extend. Bridge	740	1/21/23
Rep. work on 20th. Main extend. Bridge	741	1/21/23
Rep. work on 21st. Main extend. Bridge	742	1/21/23
Rep. work on 22nd. Main extend. Bridge	743	1/21/23
Rep. work on 23rd. Main extend. Bridge	744	1/21/23
Rep. work on 24th. Main extend. Bridge	745	1/21/23
Rep. work on 25th. Main extend. Bridge	746	1/21/23
Rep. work on 26th. Main extend. Bridge	747	1/21/23
Rep. work on 27th. Main extend. Bridge	748	1/21/23
Rep. work on 28th. Main extend. Bridge	749	1/21/23
Rep. work on 29th. Main extend. Bridge	750	1/21/23
Rep. work on 30th. Main extend. Bridge	751	1/21/23
Rep. work on 31st. Main extend. Bridge	752	1/21/23
Rep. work on 32nd. Main extend. Bridge	753	1/21/23
Rep. work on 33rd. Main extend. Bridge	754	1/21/23
Rep. work on 34th. Main extend. Bridge	755	1/21/23
Rep. work on 35th. Main extend. Bridge	756	1/21/23
Rep. work on 36th. Main extend. Bridge	757	1/21/23
Rep. work on 37th. Main extend. Bridge	758	1/21/23
Rep. work on 38th. Main extend. Bridge	759	1/21/23
Rep. work on 39th. Main extend. Bridge	760	1/21/23
Rep. work on 40th. Main extend. Bridge	761	1/21/23
Rep. work on 41st. Main extend. Bridge	762	1/21/23
Rep. work on 42nd. Main extend. Bridge	763	1/21/23
Rep. work on 43rd. Main extend. Bridge	764	1/21/23
Rep. work on 44th. Main extend. Bridge	765	1/21/23
Rep. work on 45th. Main extend. Bridge	766	1/21/23
Rep. work on 46th. Main extend. Bridge	767	1/21/23
Rep. work on 47th. Main extend. Bridge	768	1/21/23
Rep. work on 48th. Main extend. Bridge	769	1/21/23
Rep. work on 49th. Main extend. Bridge	770	1/21/23
Rep. work on 50th. Main extend. Bridge	771	1/21/23
Rep. work on 51st. Main extend. Bridge	772	1/21/23
Rep. work on 52nd. Main extend. Bridge	773	1/21/23
Rep. work on 53rd. Main extend. Bridge	774	1/21/23
Rep. work on 54th. Main extend. Bridge	775	1/21/23
Rep. work on 55th. Main extend. Bridge	776	1/21/23
Rep. work on 56th. Main extend. Bridge	777	1/21/23
Rep. work on 57th. Main extend. Bridge	778	1/21/23
Rep. work on 58th. Main extend. Bridge	779	1/21/23
Rep. work on 59th. Main extend. Bridge	780	1/21/23
Rep. work on 60th. Main extend. Bridge	781	1/21/23
Rep. work on 61st. Main extend. Bridge	782	1/21/23
Rep. work on 62nd. Main extend. Bridge	783	1/21/23
Rep. work on 63rd. Main extend. Bridge	784	1/21/23
Rep. work on 64th. Main extend. Bridge	785	1/21/23
Rep. work on 65th. Main extend. Bridge	786	1/21/23
Rep. work on 66th. Main extend. Bridge	787	1/21/23
Rep. work on 67th. Main extend. Bridge	788	1/21/23
Rep. work on 68th. Main extend. Bridge	789	1/21/23
Rep. work on 69th. Main extend. Bridge	790	1/21/23
Rep. work on 70th. Main extend. Bridge	791	1/21/23
Rep. work on 71st. Main extend. Bridge	792	1/21/23
Rep. work on 72nd. Main extend. Bridge	793	1/21/23
Rep. work on 73rd. Main extend. Bridge	794	1/21/23
Rep. work on 74th. Main extend. Bridge	795	1/21/23
Rep. work on 75th. Main extend. Bridge	796	1/21/23
Rep. work on 76th. Main extend. Bridge	797	1/21/23
Rep. work on 77th. Main extend. Bridge	798	1/21/23
Rep. work on 78th. Main extend. Bridge	799	1/21/23
Rep. work on 79th. Main extend. Bridge	800	1/21/23
Rep. work on 80th. Main extend. Bridge	801	1/21/23
Rep. work on 81st. Main extend. Bridge	802	1/21/23
Rep. work on 82nd. Main extend. Bridge	803	1/21/23
Rep. work on 83rd. Main extend. Bridge	804	1/21/23
Rep. work on 84th. Main extend. Bridge	805	1/21/23
Rep. work on 85th. Main extend. Bridge	806	1/21/23
Rep. work on 86th. Main extend. Bridge	807	1/21/23
Rep. work on 87th. Main extend. Bridge	808	1/21/23
Rep. work on 88th. Main extend. Bridge	809	1/21/23
Rep. work on 89th. Main extend. Bridge	810	1/21/23
Rep. work on 90th. Main extend. Bridge	811	1/21/23
Rep. work on 91st. Main extend. Bridge	812	1/21/23
Rep. work on 92nd. Main extend. Bridge	813	1/21/23
Rep. work on 93rd. Main extend. Bridge	814	1/21/23
Rep. work on 94th. Main extend. Bridge	815	1/21/23
Rep. work on 95th. Main extend. Bridge	816	1/21/23
Rep. work on 96th. Main extend. Bridge	817	1/21/23
Rep. work on 97th. Main extend. Bridge	818	1/21/23
Rep. work on 98th. Main extend. Bridge	819	1/21/23
Rep. work on 99th. Main extend. Bridge	820	1/21/23
Rep. work on 100th. Main extend. Bridge	821	1/21/23

NUMBER	GRANTOR	GRANTEE	INSTRUMENT	DATE	RECORD	CUSTODIAN NUMBER	V.31-A-9-3
1	Wm. J. Sullivan	OS&C RR.	Release	11/15/70	105/587	160	Franklin Co., Ohio.
2	NYC RR Co.	C.C.C. & St. L. Ry.	Lease	7/24/25		1696	
3				8/24/25		1697	
4				9/24/25		1698	
5				9/27/28		1699	
6			Possession			1650	
7						27	



ROLL 8 IMAGE 14

COLUMBUS OHIO

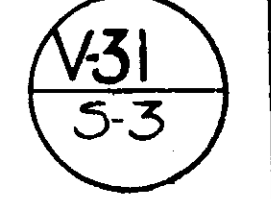


- 1951 No Change
- 1952 " " "
- 1953 " " "
- 1954 10-3-57
- 1955 No Change
- 1956 7-17-58
- 1957 No Change
- 1960 6-5-26-67
- 1967 No Change

CORRECTED TO DECEMBER 31, 1950.
CORRECTED TO DECEMBER 31, 1954.
CORRECTED TO DECEMBER 31, 1958.
CORRECTED TO DECEMBER 31, 1960.
CORRECTED TO DECEMBER 31, 1967.

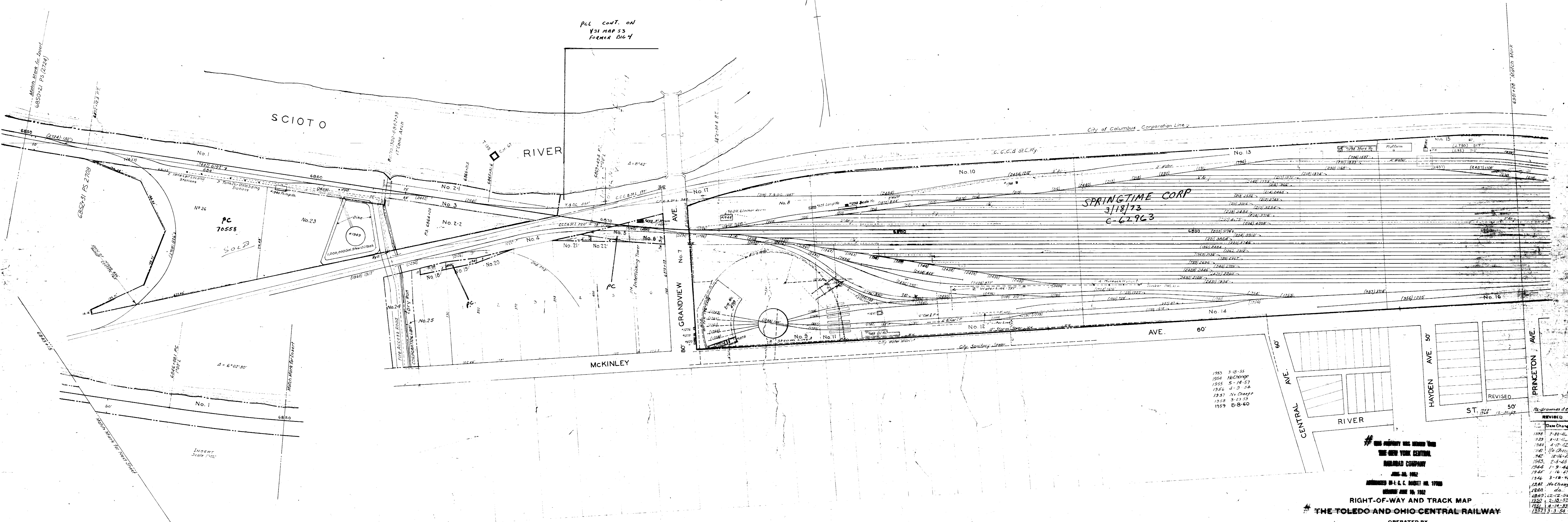
Sheet No. 5-3 of V.31-A of C.C.C. & ST. L. RY.
From Survey Station 7399+96 to 7452+76
Valuation Engineer

RIGHT-OF-WAY AND TRACK MAP
THE CLEVELAND, CINCINNATI, CHICAGO & ST. LOUIS RY.
Operated by
THE CLEVELAND, CINCINNATI, CHICAGO & ST. LOUIS RY. CO.
CINCINNATI DIVISION - MAIN LINE
Sta. 7399+96 To Sta. 7452+76
Scale 1 in. = 100 Ft. June 30th, 1915.
Office of Valuation Engineer, Cincinnati, O.



ROLL 8 IMAGE 15

PCL CONT. ON
V31 MAP 53
FORMER DIC 4



1953 3-15-55
1954 No Change
1955 5-14-57
1956 4-5-58
1957 No Change
1958 3-23-59
1959 8-8-60

REVISION	DATE	BY
1378	7-30-60	
1379	1-12-61	
1380	4-10-61	
1381	10-20-61	
1382	12-16-61	
1383	2-5-65	
1384	1-9-66	
1385	1-16-67	
1386	3-18-68	
1387	No Change	
1388	do.	
1389	12-12-90	
1390	2-12-92	
1391	4-14-93	
1392	3-3-94	

THIS MAP WAS PREPARED BY
THE NEW YORK CENTRAL
RAILROAD COMPANY
JUNE 26, 1962
APPROVED BY I. C. C. MARKET NO. 17900
ISSUED JUNE 26, 1962
RIGHT-OF-WAY AND TRACK MAP
THE TOLEDO AND OHIO CENTRAL RAILWAY

OPERATED BY
THE NEW YORK CENTRAL RAILROAD CO.
MAIN LINE
WEST COLUMBUS, O.

FRANKLIN COUNTY
FRANKLIN TOWNSHIP

I HEREBY CERTIFY THAT THIS IS A CORRECT
MAP PREPARED FROM THE RECORDS OF THE
NEW YORK CENTRAL RAILROAD COMPANY.
JUNE 6, 1964
James C. Groves
REGISTERED ENGINEER

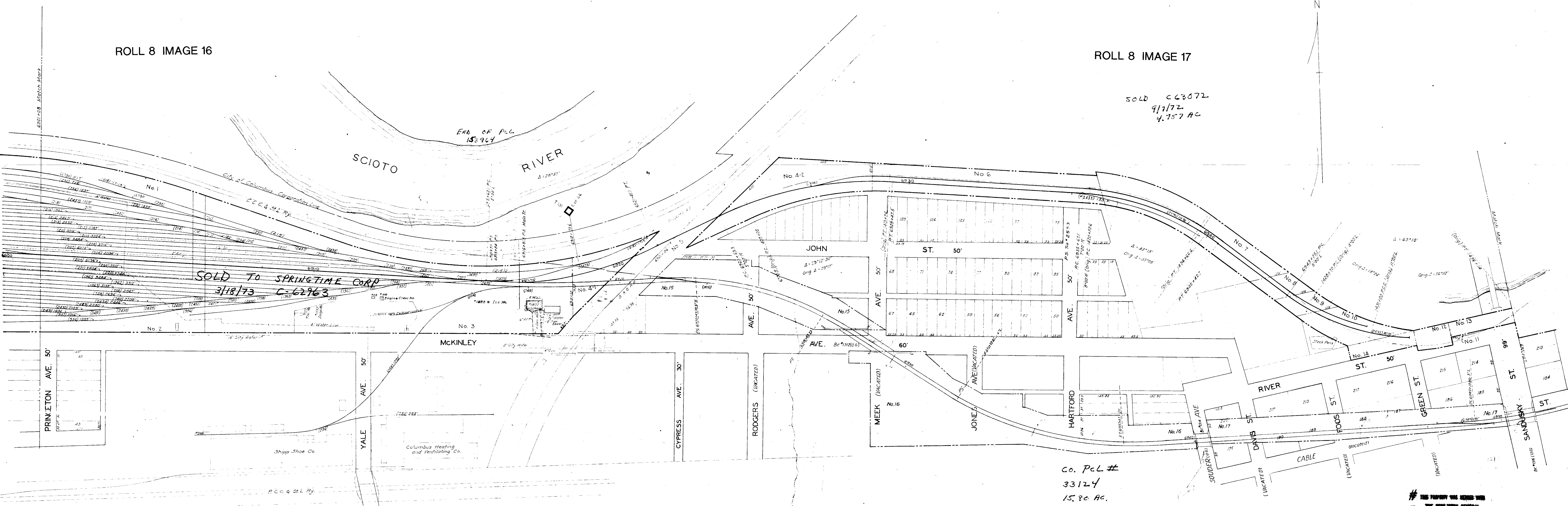
FROM STA. 6843+15 TO STA. 6801+08
SCALE 1" = 100' AS OF JUNE 30, 1962
OFFICE OF VALUATION ENGINEER
CLEVELAND, OHIO

V302
68
REVISED

ROLL 8 IMAGE 16

ROLL 8 IMAGE 17

SOLD C-62762
9/1/72
4.757 AC



1953	3-21-55
1954	10-14-55
1955	NO CHANGE
1956	4-10-56
1957	NO CHANGE
1958	12-31-57

REVISIONS	
No.	Date Changed
1928	7-30-28
1929	NO CHANGE
1930	4-7-32
1941	NO CHANGE
1942	do
1943	do
1944	do
1945	do
1946	do
1922	7-29-49
1948	11-9-49
1952	NO CHANGE
1950	2-19-52
1951	NO CHANGE
1952	do

FRANKLIN COUNTY

I HEREBY CERTIFY THAT THIS IS A CORRECT MAP PREPARED FROM THE RECORDS OF THE NEW YORK CENTRAL RAILROAD COMPANY.
 JAMES C. GIBSON
 SURVEYOR ENGINEER
 DEC. 16, 1944

THIS PROPERTY WAS ACQUIRED BY
THE NEW YORK CENTRAL RAILROAD COMPANY
 JUNE 30, 1952
 AUTHORIZED BY L. C. C. ORDER NO. 1700
 ISSUED JUNE 14, 1952

RIGHT-OF-WAY AND TRACK MAP
THE TOLEDO AND OHIO CENTRAL RAILWAY
 OPERATED BY
THE NEW YORK CENTRAL RAILROAD CO.
 MAIN LINE
WEST COLUMBUS, O.

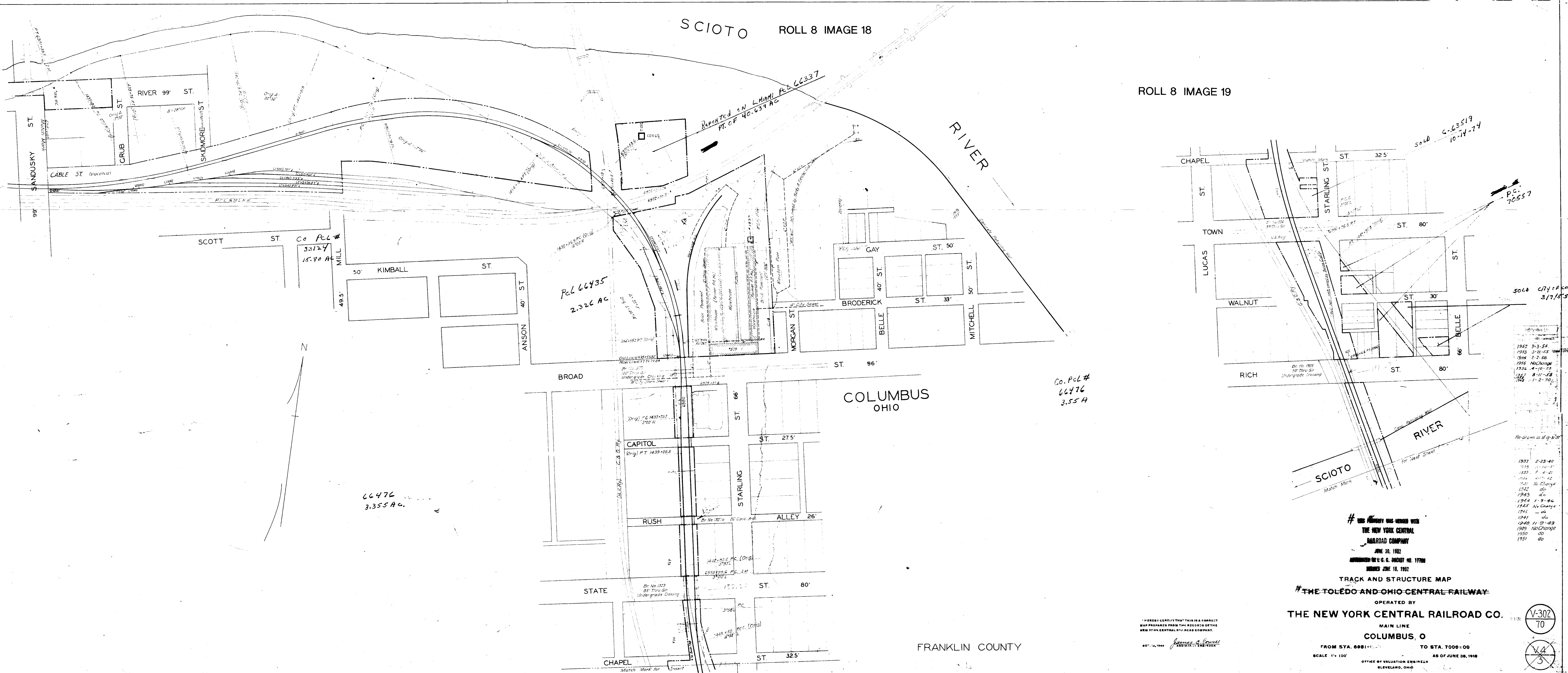
FROM STA. 6301+08 TO STA. 6351+10
 SCALE 1" = 800'
 AS OF JUNE 30, 1952
 OFFICE OF VALUATION ENGINEER
 CLEVELAND, OHIO

V-302
69



SCIOTO ROLL 8 IMAGE 18

ROLL 8 IMAGE 19



1922	3-3-54
1923	3-21-55
1924	2-2-56
1925	No Change
1926	4-10-53
1927	8-11-53
1928	1-2-70
1937	2-23-40
1938	5-10-41
1939	4-4-41
1940	4-17-42
1941	No Change
1942	do
1943	do
1944	1-9-46
1945	No Change
1946	do
1947	do
1948	11-9-49
1949	No Change
1950	do
1951	do

THIS PROPERTY WAS MERGED WITH
**THE NEW YORK CENTRAL
RAILROAD COMPANY**
JUNE 30, 1952
ANNOUNCED BY U.S. GOVERNMENT NO. 17700
DATED JUNE 18, 1952

TRACK AND STRUCTURE MAP
THE TOLEDO AND OHIO CENTRAL RAILWAY
OPERATED BY
THE NEW YORK CENTRAL RAILROAD CO.
MAIN LINE
COLUMBUS, O

FROM STA. 6881+10 TO STA. 7000+00
SCALE 1" = 100'
OFFICE OF VALUATION ENGINEER
CLEVELAND, OHIO

I HEREBY CERTIFY THAT THIS IS A CORRECT
MAP PREPARED FROM THE RECORDS OF THE
NEW YORK CENTRAL RAILROAD COMPANY.
JUN 14, 1954
J. J. ...
REGISTERED ENGINEER

V-302
70
V-4
3

FRANKLIN COUNTY

COLUMBUS OHIO