

FRANKLIN COUNTY, OHIO

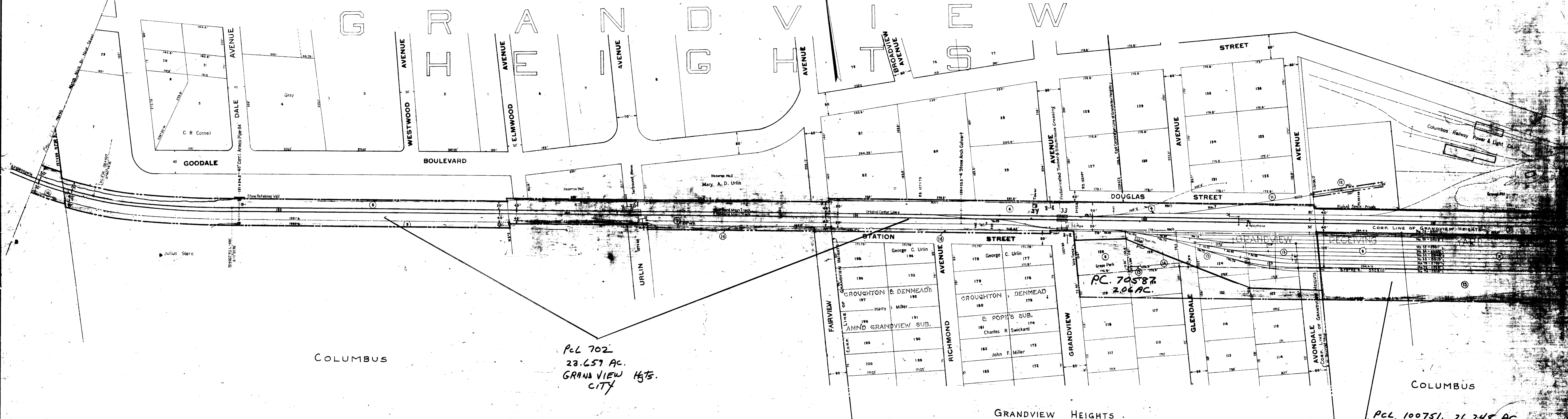
FRANKLIN TOWNSHIP

U. S. MILITARY DISTRICT

SCHEDULE OF SIDINGS AND CROSSOVERS

Side Track Number	Location	Class	Length June 30, 1928 R.R. Co. Private	Total	Remarks
5	Grandview Heights School Dist	P	7 5 7	7 5 7	See Map No 5
7		B	1 5 6	1 5 6	Unknown Unknown
9		V			See Map No 5
16 A		Y			See Map No 5
18		P	1 6 6	1 6 6	See Map No 5
5	Grandview Heights Corp.	P	1 7 2	1 7 2	See Map No 5
18		Y	1 9 2	1 9 2	See Map No 5
01			4 6 0	4 6 0	Added 6-30-20
26			5 0	5 0	Added 6-30-20
6 5					See Map No 5 Added 6-30-20
6 6					See Map No 5 Added 6-30-20
6 7					See Map No 5 Added 6-30-20
6 8					See Map No 5 Added 6-30-20
6 9					See Map No 5 Added 6-30-20
6 10					See Map No 5 Added 6-30-20
6 11					See Map No 5 Added 6-30-20
6 12					See Map No 5 Added 6-30-20
6 13					See Map No 5 Added 6-30-20
6 14					See Map No 5 Added 6-30-20
6 15					See Map No 5 Added 6-30-20
6 16					See Map No 5 Added 6-30-20
6 17					See Map No 5 Added 6-30-20
6 18					See Map No 5 Added 6-30-20
6 19					See Map No 5 Added 6-30-20
6 20					See Map No 5 Added 6-30-20
6 21					See Map No 5 Added 6-30-20
6 22					See Map No 5 Added 6-30-20
6 23					See Map No 5 Added 6-30-20
6 24					See Map No 5 Added 6-30-20
6 25					See Map No 5 Added 6-30-20
6 26					See Map No 5 Added 6-30-20

ROLL 6 IMAGE 1



COLUMBUS

P.C.L. 702  
23.659 AC.  
GRANDVIEW HTS.  
CITY

COLUMBUS

P.C.L. 100751. 26.248 AC.  
COLS. CORP.

PHILA. BALTO. & WASHINGTON R. R.  
FORMERLY

RIGHT OF WAY AND TRACK MAP  
PITTSBURGH, CINCINNATI, CHICAGO & ST. LOUIS RY.

STATION 105+60 TO STATION 156+40  
SCALE 1"=100' ONE SQUARE

OFFICE OF ENGINEERING  
PHILADELPHIA, PA.

NO.	REVISED	NO.	NO.
1917	✓	1917	✓
1918	✓	1918	✓
1919	✓	1919	✓
1920	✓	1920	✓
1921	✓	1921	✓
1922	✓	1922	✓
1923	✓	1923	✓
1924	✓	1924	✓
1925	✓	1925	✓
1926	✓	1926	✓
1927	✓	1927	✓
1928	✓	1928	✓
1929	✓	1929	✓
1930	✓	1930	✓
1931	✓	1931	✓
1932	✓	1932	✓
1933	✓	1933	✓
1934	✓	1934	✓
1935	✓	1935	✓
1936	✓	1936	✓
1937	✓	1937	✓
1938	✓	1938	✓
1939	✓	1939	✓
1940	✓	1940	✓
1941	✓	1941	✓
1942	✓	1942	✓
1943	✓	1943	✓
1944	✓	1944	✓
1945	✓	1945	✓
1946	✓	1946	✓
1947	✓	1947	✓
1948	✓	1948	✓
1949	✓	1949	✓
1950	✓	1950	✓
1951	✓	1951	✓
1952	✓	1952	✓
1953	✓	1953	✓
1954	✓	1954	✓
1955	✓	1955	✓
1956	✓	1956	✓
1957	✓	1957	✓
1958	✓	1958	✓
1959	✓	1959	✓
1960	✓	1960	✓
1961	✓	1961	✓
1962	✓	1962	✓
1963	✓	1963	✓
1964	✓	1964	✓
1965	✓	1965	✓
1966	✓	1966	✓
1967	✓	1967	✓
1968	✓	1968	✓
1969	✓	1969	✓
1970	✓	1970	✓
1971	✓	1971	✓
1972	✓	1972	✓
1973	✓	1973	✓
1974	✓	1974	✓
1975	✓	1975	✓
1976	✓	1976	✓
1977	✓	1977	✓
1978	✓	1978	✓
1979	✓	1979	✓
1980	✓	1980	✓
1981	✓	1981	✓
1982	✓	1982	✓
1983	✓	1983	✓
1984	✓	1984	✓
1985	✓	1985	✓
1986	✓	1986	✓
1987	✓	1987	✓
1988	✓	1988	✓
1989	✓	1989	✓
1990	✓	1990	✓
1991	✓	1991	✓
1992	✓	1992	✓
1993	✓	1993	✓
1994	✓	1994	✓
1995	✓	1995	✓
1996	✓	1996	✓
1997	✓	1997	✓
1998	✓	1998	✓
1999	✓	1999	✓
2000	✓	2000	✓

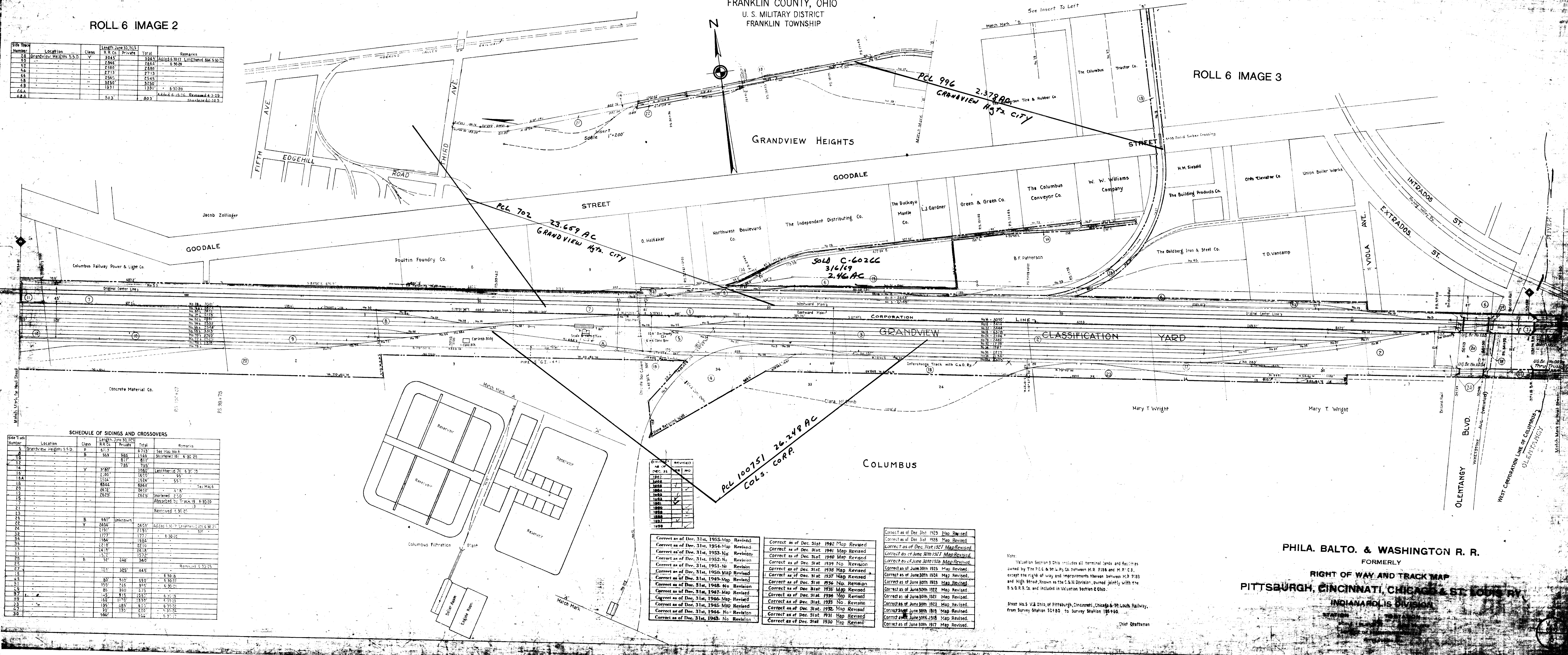
ROLL 6 IMAGE 2

Side Track Number	Location	Class	Length June 30, 1935	Remarks
2.0	Grandview Heights S.S.D.	Y	3045	3045' 6.30' 20'
5.0			2844	2844' 6.30' 20'
5.2			2580	2580' 6.30' 20'
5.4			2713	2713' 6.30' 20'
5.6			2545	2545' 6.30' 20'
5.8			3350	3350' 6.30' 20'
6.0			1881	1881' 6.30' 20'
6.6A			805	805' 6.30' 20'
6.6B			805	805' 6.30' 20'

SCHEDULE OF SIDINGS AND CROSSOVERS

Side Track Number	Location	Class	Length June 30, 1935	Remarks
5	Grandview Heights S.S.D.	P	673	673' 6.30' 20'
10		B	553	553' 6.30' 20'
12			811	811' 6.30' 20'
14			785	785' 6.30' 20'
16		Y	3780	3780' 6.30' 20'
18			1200	1200' 6.30' 20'
18A			1524	1524' 6.30' 20'
18B			6344	6344' 6.30' 20'
20			2472	2472' 6.30' 20'
20A			2625	2625' 6.30' 20'
21				Removed 6.30' 20'
22				Removed 6.30' 20'
24		B	661	661' 6.30' 20'
24A		Y	2404	2404' 6.30' 20'
24B			2191	2191' 6.30' 20'
32			1777	1777' 6.30' 20'
34			1844	1844' 6.30' 20'
35			2210	2210' 6.30' 20'
35A			2418	2418' 6.30' 20'
35B			1572	1572' 6.30' 20'
36		B	327	327' 6.30' 20'
37			125	125' 6.30' 20'
38			517	517' 6.30' 20'
39			150	150' 6.30' 20'
39A			85	85' 6.30' 20'
39B			145	145' 6.30' 20'
39C			150	150' 6.30' 20'
39D			195	195' 6.30' 20'
39E			20	20' 6.30' 20'
39F			964	964' 6.30' 20'

FRANKLIN COUNTY, OHIO  
U. S. MILITARY DISTRICT  
FRANKLIN TOWNSHIP



ROLL 6 IMAGE 3

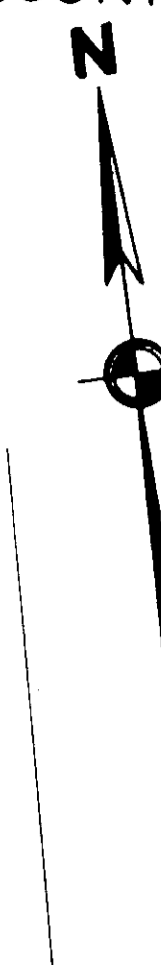
NO.	REVISED
1927	
1928	
1929	
1930	
1931	
1932	
1933	
1934	
1935	
1936	
1937	
1938	
1939	
1940	
1941	
1942	
1943	
1944	
1945	
1946	
1947	
1948	
1949	
1950	

- Correct as of Dec. 31st, 1955-Map Revised
- Correct as of Dec. 31st, 1954-Map Revised
- Correct as of Dec. 31st, 1953-No Revision
- Correct as of Dec. 31st, 1952-No Revision
- Correct as of Dec. 31st, 1951-No Revision
- Correct as of Dec. 31st, 1950-Map Revised
- Correct as of Dec. 31st, 1949-Map Revised
- Correct as of Dec. 31st, 1948-No Revision
- Correct as of Dec. 31st, 1947-Map Revised
- Correct as of Dec. 31st, 1946-Map Revised
- Correct as of Dec. 31st, 1945-Map Revised
- Correct as of Dec. 31st, 1944-No Revision
- Correct as of Dec. 31st, 1943-No Revision
- Correct as of Dec. 31st, 1942-Map Revised
- Correct as of Dec. 31st, 1941-Map Revised
- Correct as of Dec. 31st, 1940-Map Revised
- Correct as of Dec. 31st, 1939-No Revision
- Correct as of Dec. 31st, 1938-Map Revised
- Correct as of Dec. 31st, 1937-Map Revised
- Correct as of Dec. 31st, 1936-Map Revised
- Correct as of Dec. 31st, 1935-Map Revised
- Correct as of Dec. 31st, 1934-Map Revised
- Correct as of Dec. 31st, 1933-No Revision
- Correct as of Dec. 31st, 1932-Map Revised
- Correct as of Dec. 31st, 1931-Map Revised
- Correct as of Dec. 31st, 1930-Map Revised
- Correct as of Dec. 31st, 1929-Map Revised
- Correct as of Dec. 31st, 1928-Map Revised
- Correct as of Dec. 31st, 1927-Map Revised
- Correct as of Dec. 31st, 1926-Map Revised
- Correct as of Dec. 31st, 1925-Map Revised
- Correct as of Dec. 31st, 1924-Map Revised
- Correct as of Dec. 31st, 1923-Map Revised
- Correct as of Dec. 31st, 1922-Map Revised
- Correct as of Dec. 31st, 1921-Map Revised
- Correct as of Dec. 31st, 1920-Map Revised
- Correct as of Dec. 31st, 1919-Map Revised
- Correct as of Dec. 31st, 1918-Map Revised
- Correct as of Dec. 31st, 1917-Map Revised

PHILA. BALTO. & WASHINGTON R. R.  
FORMERLY  
RIGHT OF WAY AND TRACK MAP  
PITTSBURGH, CINCINNATI, CHICAGO & ST. LOUIS RY.  
INDIANAPOLIS DIVISION

Sheet No. 5 V.A. Ohio, of Pittsburgh, Cincinnati, Chicago & St. Louis Railway, from Survey Station 52180 to Survey Station 105400.

FRANKLIN COUNTY, OHIO



ROLL 6 IMAGE 4

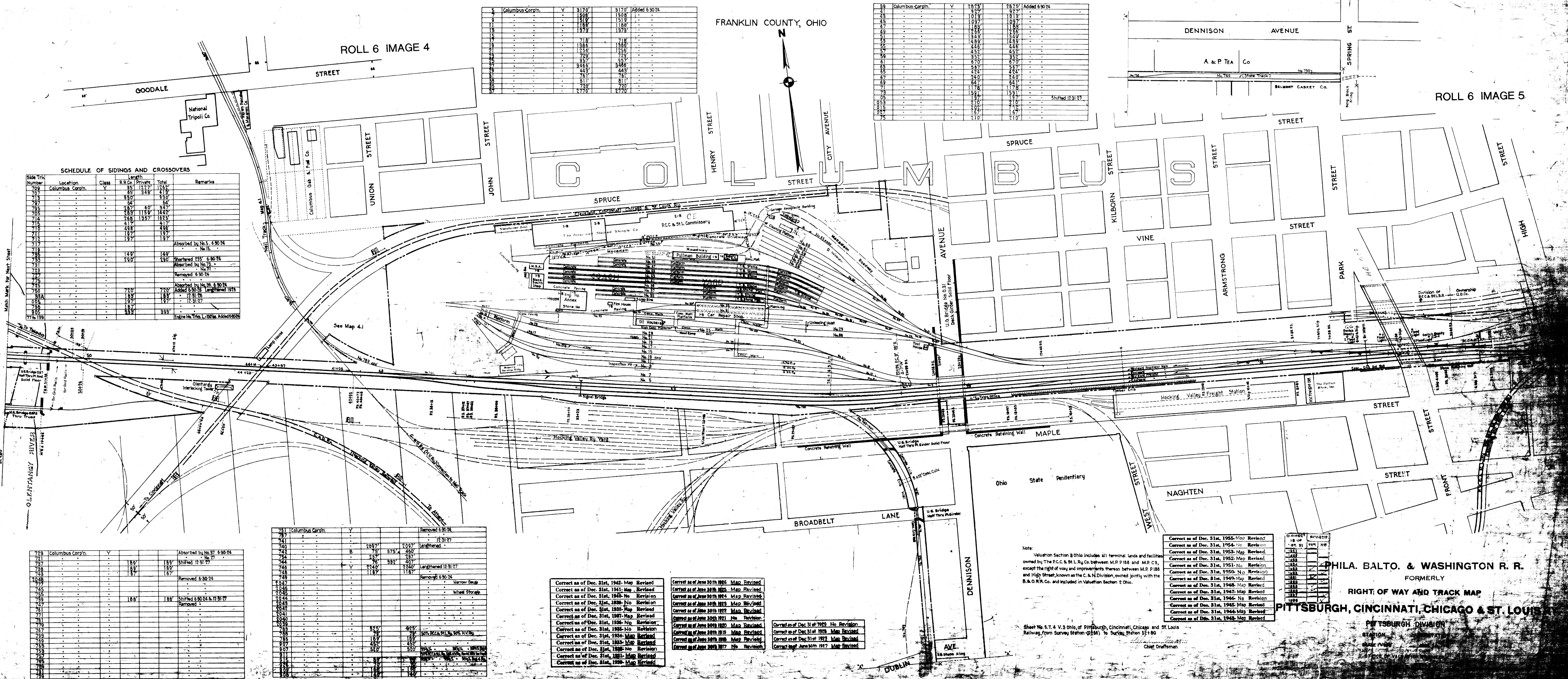
ROLL 6 IMAGE 5

Parcel No.	Owner	Area	Remarks
5	Columbus Corpn.	3170'	Added 6-30-24
6		1508'	
7		1519'	
8		1888'	
9		1375'	
10		718'	
11		1385'	
12		1250'	
13		729'	
14		3457'	
15		445'	
16		761'	
17		911'	
18		720'	
19		2770'	

Parcel No.	Owner	Area	Remarks
39	Columbus Corpn.	2825'	Added 6-30-24
40		359'	
41		1013'	
42		1097'	
43		1893'	
44		185'	
45		1349'	
46		489'	
47		448'	
48		452'	
49		352'	
50		670'	
51		527'	
52		424'	
53		240'	
54		647'	
55		1178'	
56		1591'	
57		197'	
58		210'	
59		167'	
60		210'	
61		210'	
62		210'	
63		210'	
64		210'	
65		210'	
66		210'	
67		210'	
68		210'	
69		210'	
70		210'	
71		210'	
72		210'	
73		210'	
74		210'	
75		210'	

**SCHEDULE OF SIDINGS AND CROSSOVERS**

Side Trk Number	Location	Class	R.R. Co.	Private	Total	Remarks
709	Columbus Corpn.	Y	85'	1277'	1262'	
710			65'	348'	413'	
713			930'		930'	
717			64'		64'	
718			60'	947'	1007'	
719			283'	1159'	1442'	
724			268'	1357'	1625'	
725			417'		417'	
726			488'		488'	
727			197'		197'	
728			197'		197'	Absorbed by No. 5, 6-30-24
729						No. 15.
730			140'		140'	
731			290'		290'	Shortened 235' 6-30-24
732						Absorbed by No. 73.
733						No. 11.
734						Removed 6-30-24
735						
736						
737						
738						
739						
740			720'		720'	Absorbed by No. 39, 6-30-24
83A			189'		189'	12-31-27
005			197'		197'	12-31-27
090			393'		393'	
77 to 199						Engine Ho. Trks. L. 150' Added 6-30-24



Parcel No.	Owner	Area	Remarks
729	Columbus Corpn.	Y	Absorbed by No. 57, 6-30-24
731			Shifted 12-31-27
732		189'	189'
733		189'	189'
734		187'	187'
1048			Removed 6-30-24
777			
745			
746			
747		188'	188'
748			Shifted 6-30-24 & 12-31-27
749			Removed
751			
752			
753			
754			
755			
756			
757			
758			
759			
760			
761			
762			
763			
764			
765			
766			
767			
768			
769			
770			

Parcel No.	Owner	Area	Remarks
751	Columbus Corpn.	Y	Removed 6-30-24
752			12-31-27
753			
754		2097'	2097'
755		75'	375'
756		237'	237'
757		76'	407'
758		2349'	2349'
759		1187'	1187'
760			Removed 6-30-24
761			Narrow Gauge
762			Wheel Storage
763			
764			
765			
766			
767			
768			
769			
770			
771			
772			
773			
774			
775			
776			
777			
778			
779			
780			
781			
782			
783			
784			
785			
786			
787			
788			
789			
790			
791			
792			
793			
794			
795			
796			
797			
798			
799			
800			
801			
802			
803			
804			
805			
806			
807			
808			
809			
810			
811			
812			
813			
814			
815			
816			
817			
818			
819			
820			

Correct as of Dec. 31st, 1942 - Map Revised  
 Correct as of Dec. 31st, 1941 - Map Revised  
 Correct as of Dec. 31st, 1940 - No Revision  
 Correct as of Dec. 31st, 1939 - No Revision  
 Correct as of Dec. 31st, 1938 - Map Revised  
 Correct as of Dec. 31st, 1937 - Map Revised  
 Correct as of Dec. 31st, 1936 - No Revision  
 Correct as of Dec. 31st, 1935 - No Revision  
 Correct as of Dec. 31st, 1934 - Map Revised  
 Correct as of Dec. 31st, 1933 - Map Revised  
 Correct as of Dec. 31st, 1932 - No Revision  
 Correct as of Dec. 31st, 1931 - Map Revised  
 Correct as of Dec. 31st, 1930 - Map Revised

Correct as of June 30th 1926 - Map Revised  
 Correct as of June 30th 1925 - Map Revised  
 Correct as of June 30th 1924 - Map Revised  
 Correct as of June 30th 1923 - Map Revised  
 Correct as of June 30th 1922 - Map Revised  
 Correct as of June 30th 1921 - No Revision  
 Correct as of June 30th 1920 - Map Revised  
 Correct as of June 30th 1919 - Map Revised  
 Correct as of June 30th 1918 - Map Revised  
 Correct as of June 30th 1917 - No Revision

Correct as of Dec 31st 1929 - No Revision  
 Correct as of Dec 31st 1928 - Map Revised  
 Correct as of Dec 31st 1927 - Map Revised  
 Correct as of June 30th 1927 - Map Revised

Year	Map	Revised
1955	Map	Revised
1954	No	Revision
1953	Map	Revised
1952	Map	Revised
1951	No	Revision
1950	No	Revision
1949	Map	Revised
1948	Map	Revised
1947	Map	Revised
1946	Map	Revised
1945	Map	Revised
1944	Map	Revised
1943	Map	Revised

Note: Valuation Section B Ohio includes all terminal lands and facilities owned by The P.C.C. & St. L. Ry. Co. between M.P. P188 and M.P. C3, except the right of way and improvements thereon between M.P. P188 and High Street, known as the C. & N. Division, owned jointly with the B. & O.R.R. Co. and included in Valuation Section 2 Ohio.

Sheet No. S.T. 4 V.3 Ohio, of Pittsburgh, Cincinnati, Chicago and St. Louis Railway, from Survey Station (0266) to Survey Station 524-00

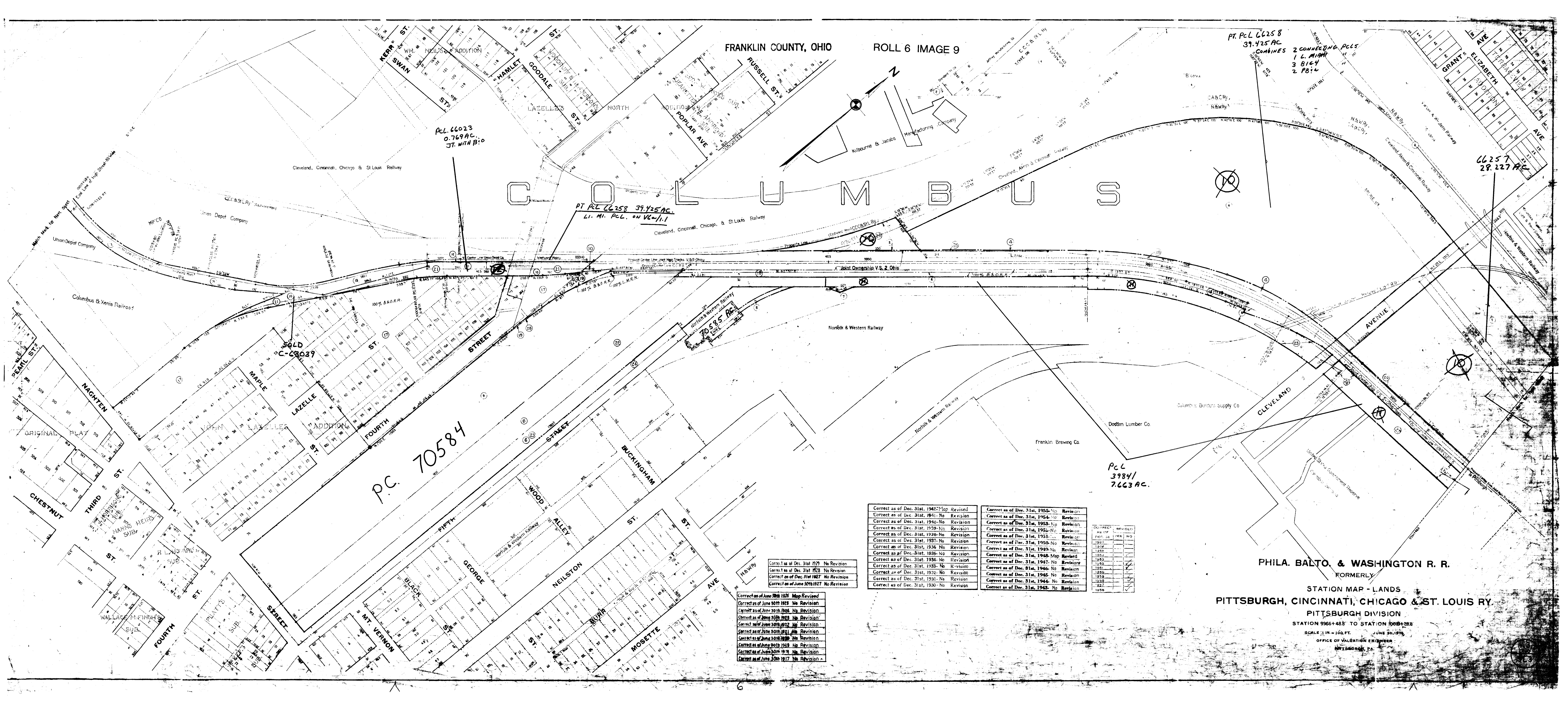
**PHILA. BALTO. & WASHINGTON R. R.**  
 FORMERLY  
**PITTSBURGH, CINCINNATI, CHICAGO & ST. LOUIS**

PITTSBURGH DIVISION  
 STATION  
 OFFICE





# COLUMBUS



P.C. 66023  
0.769 AC.  
JT. WITH B:O

PT P.C. 66258 39.425 AC.  
LI. MI. P.C. ON V-11.1

PT. P.C. 66258  
39.425 AC.  
COMBINES  
2 CONNECTING P.C.S.  
1 L. MIAMI  
3 BIC4  
2 PB:4

66257  
29.227 AC.

P.C. 70584

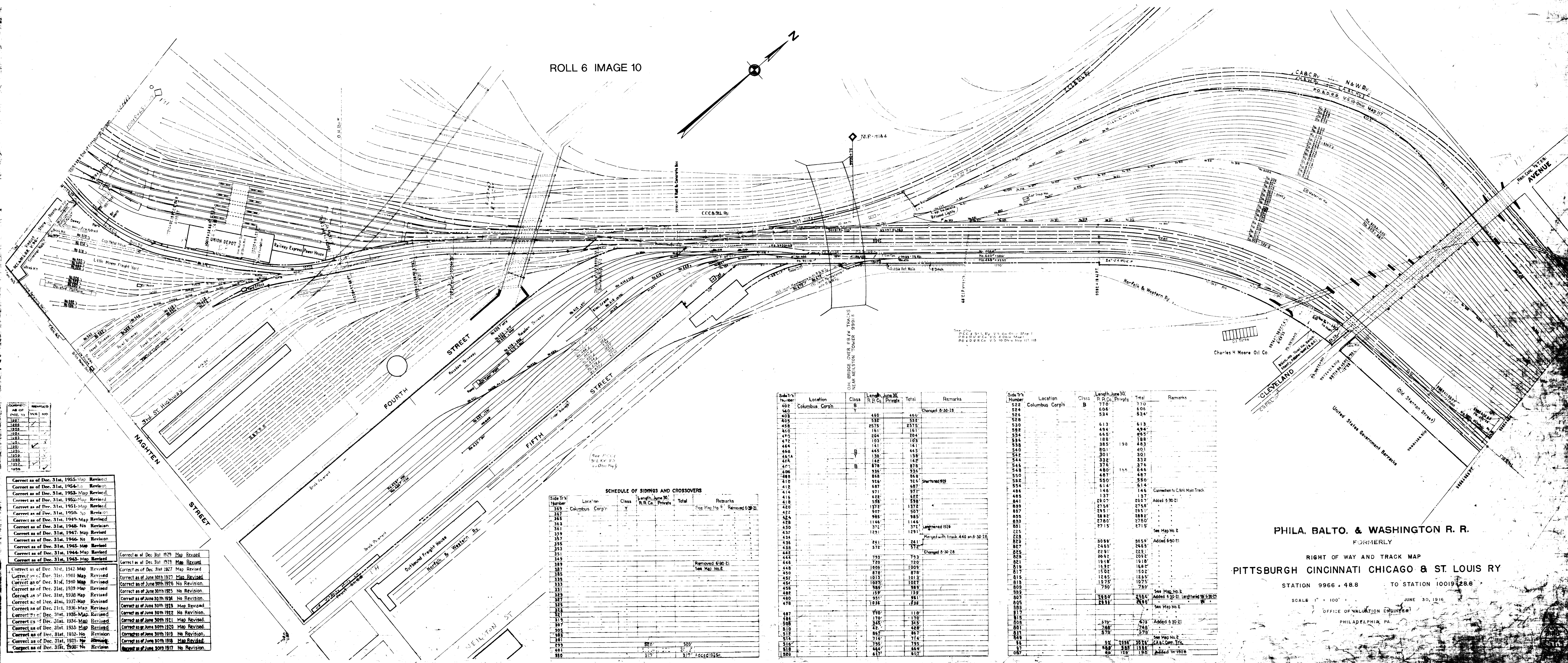
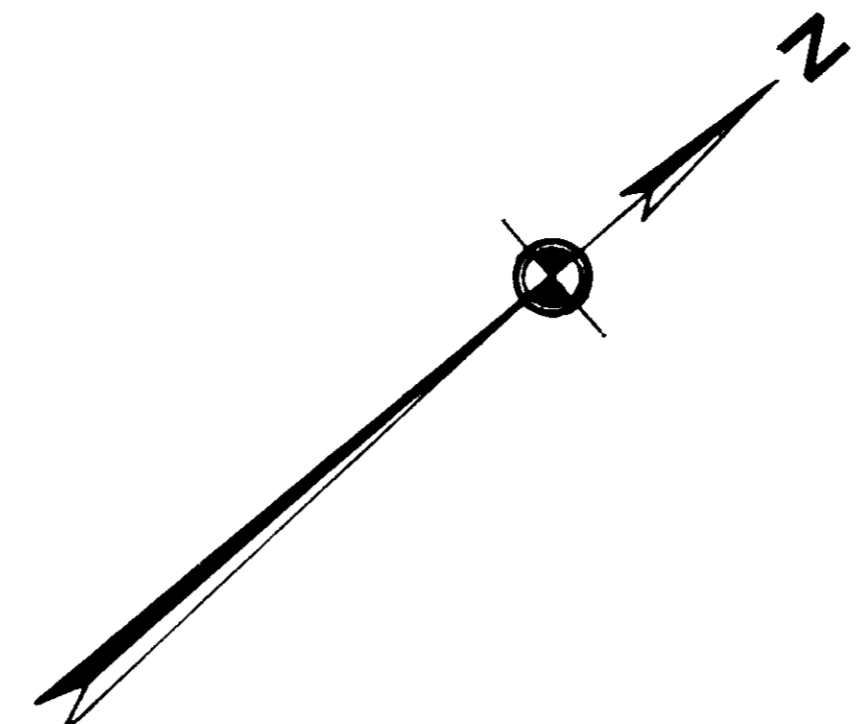
P.C.  
39841  
7.663 AC.

Correct as of Dec. 31st 1929	No Revision
Correct as of Dec. 31st 1928	No Revision
Correct as of Dec. 31st 1927	No Revision
Correct as of June 30th 1927	Map Revised
Correct as of June 30th 1926	No Revision
Correct as of June 30th 1925	No Revision
Correct as of June 30th 1924	No Revision
Correct as of June 30th 1923	No Revision
Correct as of June 30th 1922	No Revision
Correct as of June 30th 1921	No Revision
Correct as of June 30th 1920	No Revision
Correct as of June 30th 1919	No Revision
Correct as of June 30th 1918	No Revision
Correct as of June 30th 1917	No Revision

Correct as of Dec. 31st 1942	Map Revised
Correct as of Dec. 31st 1941	No Revision
Correct as of Dec. 31st 1940	No Revision
Correct as of Dec. 31st 1939	No Revision
Correct as of Dec. 31st 1938	No Revision
Correct as of Dec. 31st 1937	No Revision
Correct as of Dec. 31st 1936	No Revision
Correct as of Dec. 31st 1935	No Revision
Correct as of Dec. 31st 1934	No Revision
Correct as of Dec. 31st 1933	No Revision
Correct as of Dec. 31st 1932	No Revision
Correct as of Dec. 31st 1931	No Revision
Correct as of Dec. 31st 1930	No Revision
Correct as of Dec. 31st 1929	No Revision
Correct as of Dec. 31st 1928	No Revision
Correct as of Dec. 31st 1927	No Revision
Correct as of Dec. 31st 1926	No Revision
Correct as of Dec. 31st 1925	No Revision
Correct as of Dec. 31st 1924	No Revision
Correct as of Dec. 31st 1923	No Revision
Correct as of Dec. 31st 1922	No Revision
Correct as of Dec. 31st 1921	No Revision
Correct as of Dec. 31st 1920	No Revision
Correct as of Dec. 31st 1919	No Revision
Correct as of Dec. 31st 1918	No Revision
Correct as of Dec. 31st 1917	No Revision

AS SH.	REVISED	NO	NO
1927			
1928			
1929			
1930			
1931			
1932			
1933			
1934			
1935			
1936			
1937			
1938			
1939			
1940			
1941			
1942			

PHILA. BALTO. & WASHINGTON R. R.  
FORMERLY  
STATION MAP - LANDS  
PITTSBURGH, CINCINNATI, CHICAGO & ST. LOUIS RY.  
PITTSBURGH DIVISION  
STATION 5966+488 TO STATION 6005+288  
SCALE 1 IN = 100 FT. JUNE 30, 1946  
OFFICE OF VALUATION ENGINEER  
PITTSBURGH, PA.



AS OF	REVISED
DATE	DATE
1887	
1888	
1889	
1890	
1891	
1892	
1893	
1894	
1895	
1896	
1897	
1898	
1899	
1900	

- Correct as of Dec. 31st, 1955-Map Revised
- Correct as of Dec. 31st, 1954-Map Revised
- Correct as of Dec. 31st, 1953-Map Revised
- Correct as of Dec. 31st, 1952-Map Revised
- Correct as of Dec. 31st, 1951-Map Revised
- Correct as of Dec. 31st, 1950-Map Revised
- Correct as of Dec. 31st, 1949-Map Revised
- Correct as of Dec. 31st, 1948-Map Revised
- Correct as of Dec. 31st, 1947-Map Revised
- Correct as of Dec. 31st, 1946-Map Revised
- Correct as of Dec. 31st, 1945-Map Revised
- Correct as of Dec. 31st, 1944-Map Revised
- Correct as of Dec. 31st, 1943-Map Revised
- Correct as of Dec. 31st, 1942-Map Revised
- Correct as of Dec. 31st, 1941-Map Revised
- Correct as of Dec. 31st, 1940-Map Revised
- Correct as of Dec. 31st, 1939-Map Revised
- Correct as of Dec. 31st, 1938-Map Revised
- Correct as of Dec. 31st, 1937-Map Revised
- Correct as of Dec. 31st, 1936-Map Revised
- Correct as of Dec. 31st, 1935-Map Revised
- Correct as of Dec. 31st, 1934-Map Revised
- Correct as of Dec. 31st, 1933-Map Revised
- Correct as of Dec. 31st, 1932-Map Revised
- Correct as of Dec. 31st, 1931-Map Revised
- Correct as of Dec. 31st, 1930-Map Revised
- Correct as of Dec. 31st, 1929-Map Revised
- Correct as of Dec. 31st, 1928-Map Revised
- Correct as of Dec. 31st, 1927-Map Revised
- Correct as of June 30th 1926-Map Revised
- Correct as of June 30th 1925-Map Revised
- Correct as of June 30th 1924-Map Revised
- Correct as of June 30th 1923-Map Revised
- Correct as of June 30th 1922-Map Revised
- Correct as of June 30th 1921-Map Revised
- Correct as of June 30th 1920-Map Revised
- Correct as of June 30th 1919-Map Revised
- Correct as of June 30th 1918-Map Revised
- Correct as of June 30th 1917-Map Revised

**SCHEDULE OF SIDINGS AND CROSSOVERS**

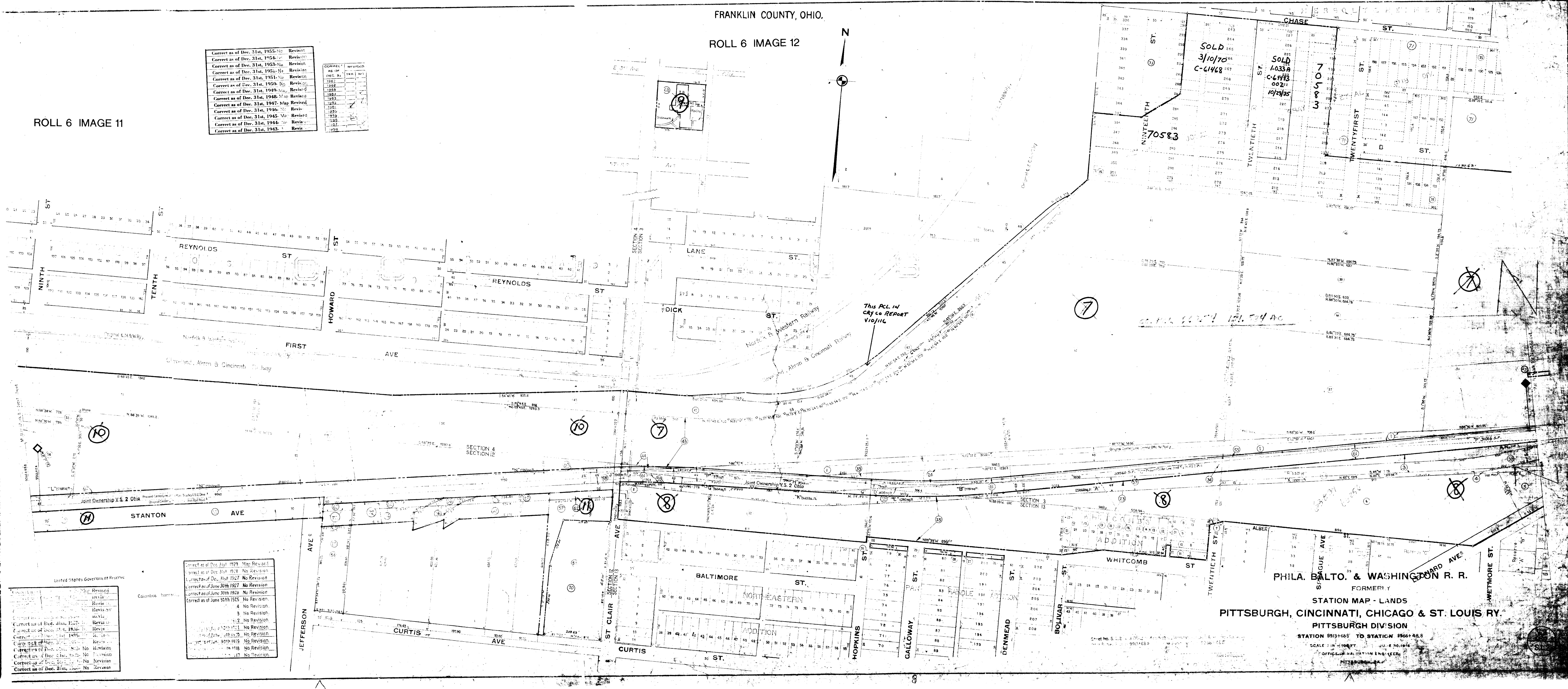
Side Trk Number	Location	Class	Length, June 30, R.R. Co.	Private	Total	Remarks
369	Columbus Corp'n	Y				See Map No. 2, Removed 6-30-21
367						
365						
363						
361						
359						
357						
355						
353						
351						
349						
347						
345						
343						
341						
339						
337						
335						
333						
331						
329						
327						
325						
323						
321						
319						
317						
315						
313						
311						
309						
307						
305						
303						
301						
299						
297						
295						
293						
291						
289						
287						
285						
283						
281						
279						
277						
275						
273						
271						
269						
267						
265						
263						
261						
259						
257						
255						
253						
251						
249						
247						
245						
243						
241						
239						
237						
235						
233						
231						
229						
227						
225						
223						
221						
219						
217						
215						
213						
211						
209						
207						
205						
203						
201						
199						
197						
195						
193						
191						
189						
187						
185						
183						
181						
179						
177						
175						
173						
171						
169						
167						
165						
163						
161						
159						
157						
155						
153						
151						
149						
147						
145						
143						
141						
139						
137						
135						
133						
131						
129						
127						
125						
123						
121						
119						
117						
115						
113						
111						
109						
107						
105						
103						
101						
99						
97						
95						
93						
91						
89						
87						
85						
83						
81						
79						
77						
75						
73						
71						
69						
67						
65						
63						
61						
59						
57						
55						
53						
51						
49						
47						
45						
43						
41						
39						
37						
35						
33						
31						
29						
27						
25						
23						
21						
19						
17						
15						
13						
11						
9						
7						
5						
3						
1						

Side Trk Number	Location	Class	Length, June 30, R.R. Co.	Private	Total	Remarks
522	Columbus Corp'n	B				Changed 6-30-28
524						
526						
528						
530						
532						
534						
536						
538						
540						
542						
544						
546						
548						
550						
552						
554						
556						
558						
560						
562						
564						
566						
568						
570						
572						
574						
576						
578						
580						
582						
584						
586						
588						
590						
592						
594						
596						
598						
600						
602						
604						
606						
608						
610						
612						
614						
616						
618						
620						
622						
624						
626						
628						
630						
632						
634						
636						
638						
640						
642						
644						
646						
648						
650						
652						
654						
656						
658						
660						
662						
664						
666						
668						
670						
672						
674						
676						
678						
680						
682						
684						
686						
688						
690						
692						
694						
696						
698						
700						

Side Trk Number	Location	Class	Length, June 30, R.R. Co.	Private	Total	Remarks
770						
772						
774						
776						
778						
780						
782						

Correct as of Dec. 31st, 1955.	No Revision
Correct as of Dec. 31st, 1954.	No Revision
Correct as of Dec. 31st, 1953.	No Revision
Correct as of Dec. 31st, 1952.	No Revision
Correct as of Dec. 31st, 1951.	No Revision
Correct as of Dec. 31st, 1950.	No Revision
Correct as of Dec. 31st, 1949.	Revised
Correct as of Dec. 31st, 1948.	Revised
Correct as of Dec. 31st, 1947.	Map Revised
Correct as of Dec. 31st, 1946.	Revised
Correct as of Dec. 31st, 1945.	Map Revised
Correct as of Dec. 31st, 1944.	Revised
Correct as of Dec. 31st, 1943.	Revised

CORRECTED	REVISED
AS OF	DATE
DEC. 31	1955
DEC. 31	1954
DEC. 31	1953
DEC. 31	1952
DEC. 31	1951
DEC. 31	1950
DEC. 31	1949
DEC. 31	1948
DEC. 31	1947
DEC. 31	1946
DEC. 31	1945
DEC. 31	1944
DEC. 31	1943



Correct as of Dec. 31st, 1929.	Map Revised
Correct as of Dec. 31st, 1928.	No Revision
Correct as of Dec. 31st, 1927.	No Revision
Correct as of Dec. 31st, 1926.	No Revision
Correct as of Dec. 31st, 1925.	No Revision
Correct as of Dec. 31st, 1924.	No Revision
Correct as of Dec. 31st, 1923.	No Revision
Correct as of Dec. 31st, 1922.	No Revision
Correct as of Dec. 31st, 1921.	No Revision
Correct as of Dec. 31st, 1920.	No Revision
Correct as of Dec. 31st, 1919.	No Revision
Correct as of Dec. 31st, 1918.	No Revision
Correct as of Dec. 31st, 1917.	No Revision

Correct as of Dec. 31st, 1927.	Revised
Correct as of Dec. 31st, 1926.	Revised
Correct as of Dec. 31st, 1925.	Revised
Correct as of Dec. 31st, 1924.	Revised
Correct as of Dec. 31st, 1923.	Revised
Correct as of Dec. 31st, 1922.	Revised
Correct as of Dec. 31st, 1921.	Revised
Correct as of Dec. 31st, 1920.	Revised
Correct as of Dec. 31st, 1919.	Revised
Correct as of Dec. 31st, 1918.	Revised
Correct as of Dec. 31st, 1917.	Revised

PHILA. BALTO. & WASHINGTON R.R.  
 FORMERLY  
 STATION MAP - LANDS  
 PITTSBURGH, CINCINNATI, CHICAGO & ST. LOUIS RY.  
 PITTSBURGH DIVISION  
 STATION 9913+688 TO STATION 9966+48.8  
 SCALE 1" = 100 FT.  
 OFFICIAL SURVEYING ENGINEER  
 PITTSBURGH, PA.

SCHEDULE OF SIDINGS AND CROSSOVERS

Table with columns: Side Trk Number, Location, Class, R.R. Co., Private, Total Length, Remarks. Lists various siding and crossover details for Columbus Corp.

Table with columns: Side Trk Number, Location, Class, R.R. Co., Private, Total Length, Remarks. Continuation of siding and crossover details.

Table with columns: Side Trk Number, Location, Class, R.R. Co., Private, Total Length, Remarks. Continuation of siding and crossover details.

Table with columns: Side Trk Number, Location, Class, R.R. Co., Private, Total Length, Remarks. Continuation of siding and crossover details.

Table with columns: Side Trk Number, Location, Class, R.R. Co., Private, Total Length, Remarks. Continuation of siding and crossover details.

FRANKLIN COUNTY, OHIO.

ROLL 6 IMAGE 13

Table with columns: Side Trk Number, Location, Class, R.R. Co., Private, Total Length, Remarks. Continuation of siding and crossover details.

Table with columns: Side Trk Number, Location, Class, R.R. Co., Private, Total Length, Remarks. Continuation of siding and crossover details.

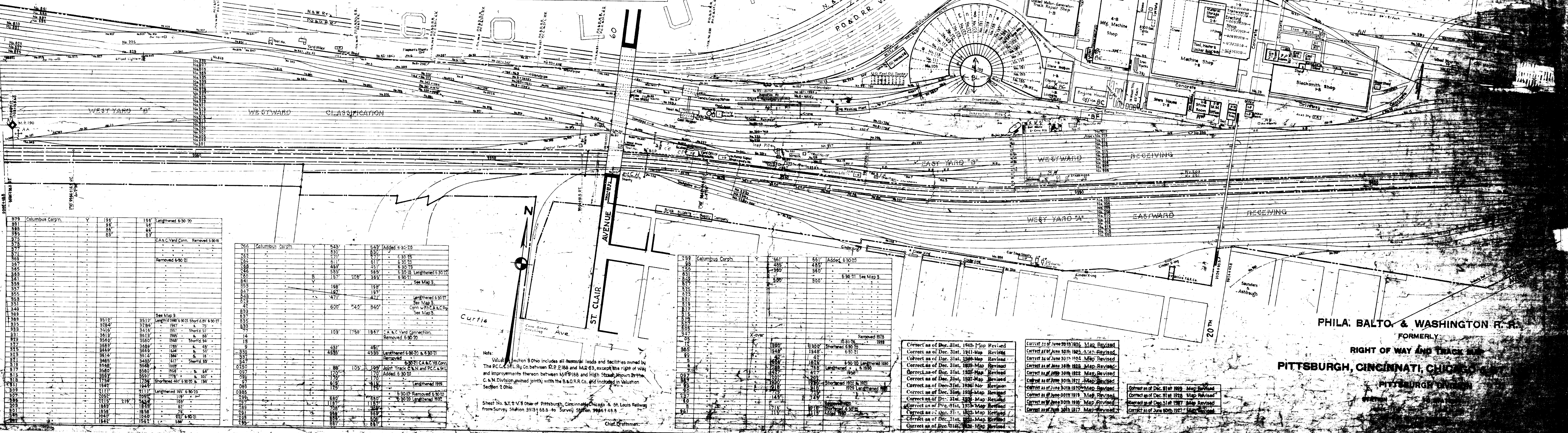


Table with columns: Side Trk Number, Location, Class, R.R. Co., Private, Total Length, Remarks. Continuation of siding and crossover details.

Table with columns: Side Trk Number, Location, Class, R.R. Co., Private, Total Length, Remarks. Continuation of siding and crossover details.

Table with columns: Side Trk Number, Location, Class, R.R. Co., Private, Total Length, Remarks. Continuation of siding and crossover details.

Table with columns: Side Trk Number, Location, Class, R.R. Co., Private, Total Length, Remarks. Continuation of siding and crossover details.

Table with columns: Side Trk Number, Location, Class, R.R. Co., Private, Total Length, Remarks. Continuation of siding and crossover details.

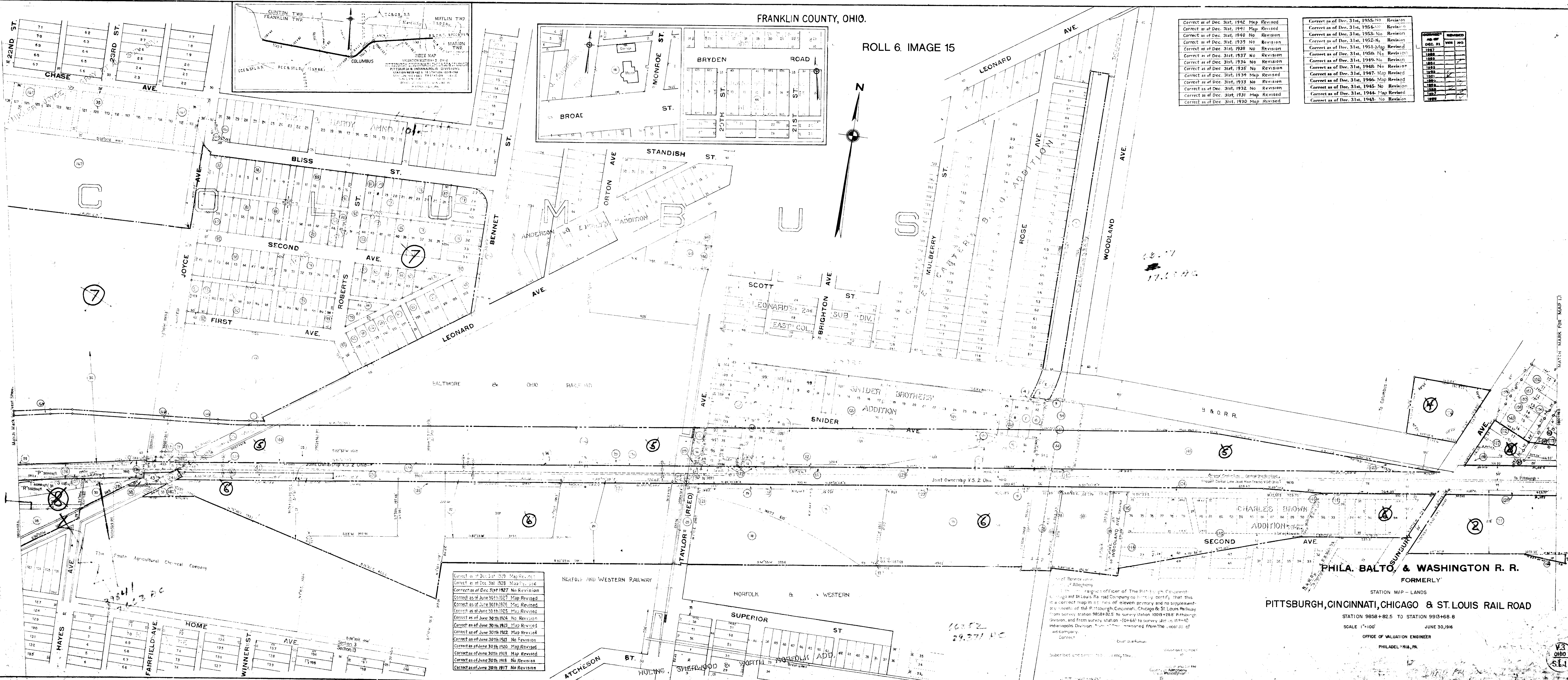
Table with columns: Side Trk Number, Location, Class, R.R. Co., Private, Total Length, Remarks. Continuation of siding and crossover details.

Table with columns: Side Trk Number, Location, Class, R.R. Co., Private, Total Length, Remarks. Continuation of siding and crossover details.

Note: Valuation Section 8 Ohio includes all terminal leads and facilities owned by the P.C. & St. L. Ry Co. between R.P. 108 and M.R. 63, except the right of way and improvements thereon between M.P. 188 and High Street, known to the C. & N. Division, owned jointly with the B. & O. R. Co. and included in Valuation Section 2 Ohio.

ROLL 6 IMAGE 13. Correct as of Dec. 31st, 1955. Map Revised. Correct as of Dec. 31st, 1954. Map Revised. Correct as of Dec. 31st, 1953. Map Revised. Correct as of Dec. 31st, 1951. No Revision. Correct as of Dec. 31st, 1949. No Revision. Correct as of Dec. 31st, 1948. No Revision. Correct as of Dec. 31st, 1947. Map Revised. Correct as of Dec. 31st, 1946. Map Revised. Correct as of Dec. 31st, 1945. Map Revised. Correct as of Dec. 31st, 1944. Map Revised.

PHILA. BALTO. & WASHINGTON R.R. FORMERLY RIGHT OF WAY AND TRACK OF PITTSBURGH, CINCINNATI, CHICAGO & ST. LOUIS RAILWAY PITTSBURGH DIVISION



Correct as of Dec. 31st, 1942. Map Revised  
 Correct as of Dec. 31st, 1941. Map Revised  
 Correct as of Dec. 31st, 1940. No Revision  
 Correct as of Dec. 31st, 1939. No Revision  
 Correct as of Dec. 31st, 1938. No Revision  
 Correct as of Dec. 31st, 1937. No Revision  
 Correct as of Dec. 31st, 1936. No Revision  
 Correct as of Dec. 31st, 1935. Map Revised  
 Correct as of Dec. 31st, 1934. Map Revised  
 Correct as of Dec. 31st, 1933. No Revision  
 Correct as of Dec. 31st, 1932. No Revision  
 Correct as of Dec. 31st, 1931. Map Revised  
 Correct as of Dec. 31st, 1930. Map Revised

Correct as of Dec. 31st, 1955. No Revision  
 Correct as of Dec. 31st, 1954. No Revision  
 Correct as of Dec. 31st, 1953. No Revision  
 Correct as of Dec. 31st, 1952. No Revision  
 Correct as of Dec. 31st, 1951. Map Revised  
 Correct as of Dec. 31st, 1950. No Revision  
 Correct as of Dec. 31st, 1949. No Revision  
 Correct as of Dec. 31st, 1948. No Revision  
 Correct as of Dec. 31st, 1947. Map Revised  
 Correct as of Dec. 31st, 1946. Map Revised  
 Correct as of Dec. 31st, 1945. No Revision  
 Correct as of Dec. 31st, 1944. Map Revised  
 Correct as of Dec. 31st, 1943. No Revision

ADDITION	REVISED
1897	
1898	
1899	
1900	
1901	
1902	
1903	
1904	
1905	
1906	
1907	
1908	
1909	
1910	
1911	
1912	
1913	
1914	
1915	
1916	
1917	
1918	
1919	
1920	

Correct as of Dec. 31st 1919. Map Revised  
 Correct as of Dec. 31st 1928. Map Revised  
 Correct as of Dec. 31st 1927. No Revision  
 Correct as of June 30th 1927. Map Revised  
 Correct as of June 30th 1926. Map Revised  
 Correct as of June 30th 1925. Map Revised  
 Correct as of June 30th 1924. No Revision  
 Correct as of June 30th 1923. Map Revised  
 Correct as of June 30th 1922. Map Revised  
 Correct as of June 30th 1921. No Revision  
 Correct as of June 30th 1920. Map Revised  
 Correct as of June 30th 1919. Map Revised  
 Correct as of June 30th 1918. No Revision  
 Correct as of June 30th 1917. No Revision

Subscribed and sworn to before me this \_\_\_\_\_ day of \_\_\_\_\_ 1916.  
 Notary Public for the County of Franklin, Ohio.

**PHILA. BALTO. & WASHINGTON R. R.**  
 FORMERLY  
**PITTSBURGH, CINCINNATI, CHICAGO & ST. LOUIS RAIL ROAD**  
 STATION MAP - LANDS  
 STATION 9858+82.5 TO STATION 9913+68.8  
 SCALE 1"=100' JUNE 30, 1916  
 OFFICE OF VALUATION ENGINEER  
 PHILADELPHIA, PA.

V3  
 OHIO  
 S.E.

ROLL 6 IMAGE 16

SCHEDULE OF SIDINGS AND CROSSOVERS

Side No.	Location	Class	Length	Priority	Total	Remarks
1001	Columbus Corpn	Y	167	100	167	Correct as of Dec 31st 1942 Map Revised
1002						Correct as of Dec 31st 1941 Map Revised
1003						Correct as of Dec 31st 1940 Map Revised
1004						Correct as of Dec 31st 1939 No Revision
1005						Correct as of Dec 31st 1938 Map Revised
1006						Correct as of Dec 31st 1937 Map Revised
1007						Correct as of Dec 31st 1936 Map Revised
1008						Correct as of Dec 31st 1935 Map Revised
1009						Correct as of Dec 31st 1934 Map Revised
1010						Correct as of Dec 31st 1933 Map Revised
1011						Correct as of Dec 31st 1932 Map Revised
1012						Correct as of Dec 31st 1931 Map Revised
1013						Correct as of Dec 31st 1930 Map Revised

FRANKLIN COUNTY, OHIO  
MARION TOWNSHIP

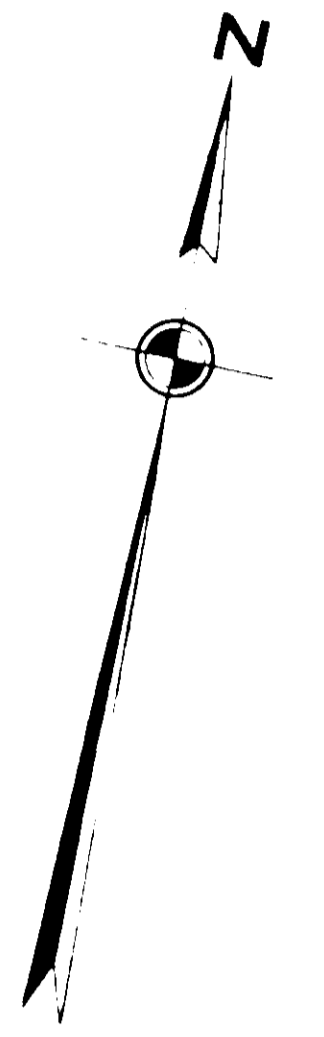
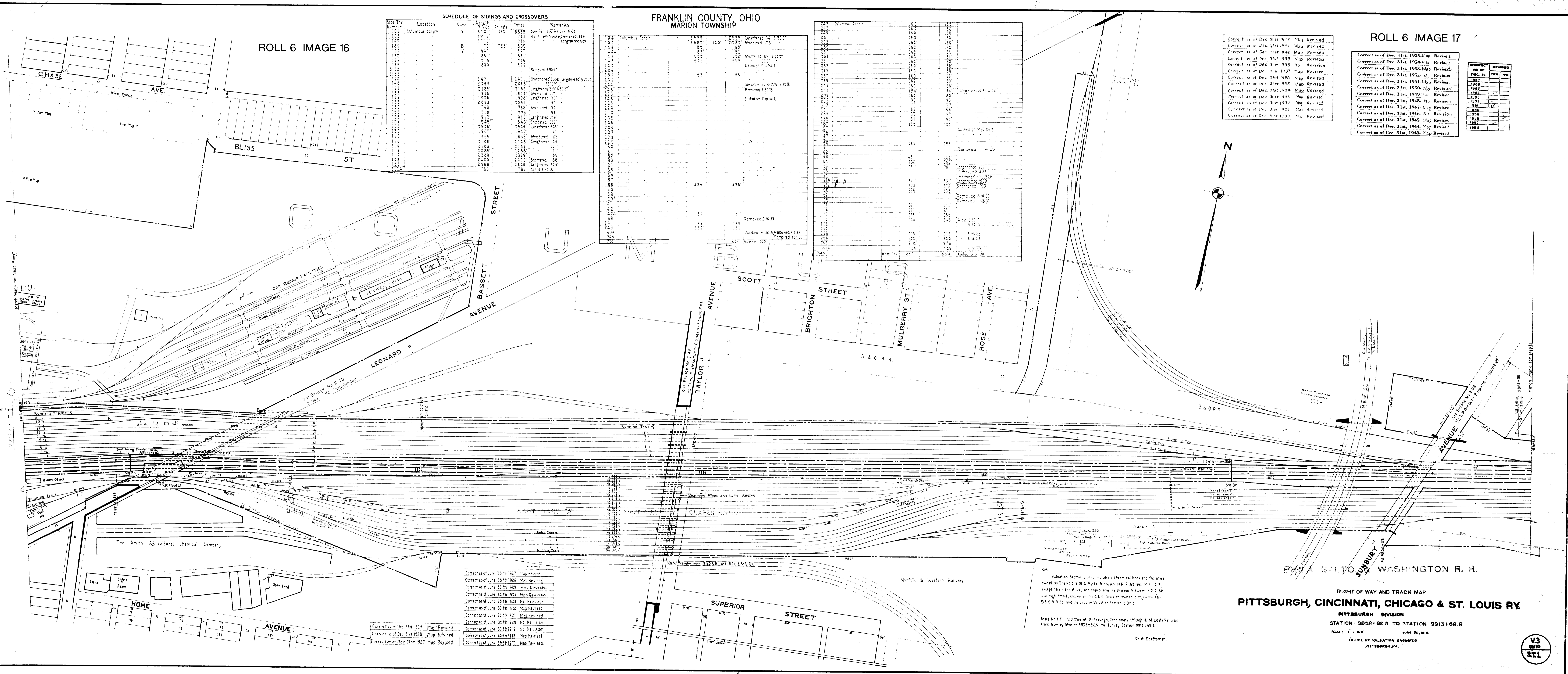
Side No.	Location	Class	Length	Priority	Total	Remarks
1014	Columbus Corpn	Y	167	100	167	Correct as of Dec 31st 1942 Map Revised
1015						Correct as of Dec 31st 1941 Map Revised
1016						Correct as of Dec 31st 1940 Map Revised
1017						Correct as of Dec 31st 1939 No Revision
1018						Correct as of Dec 31st 1938 Map Revised
1019						Correct as of Dec 31st 1937 Map Revised
1020						Correct as of Dec 31st 1936 Map Revised
1021						Correct as of Dec 31st 1935 Map Revised
1022						Correct as of Dec 31st 1934 Map Revised
1023						Correct as of Dec 31st 1933 Map Revised
1024						Correct as of Dec 31st 1932 Map Revised
1025						Correct as of Dec 31st 1931 Map Revised
1026						Correct as of Dec 31st 1930 Map Revised

ROLL 6 IMAGE 17

Correct as of Dec 31st 1942 Map Revised  
 Correct as of Dec 31st 1941 Map Revised  
 Correct as of Dec 31st 1940 Map Revised  
 Correct as of Dec 31st 1939 No Revision  
 Correct as of Dec 31st 1938 Map Revised  
 Correct as of Dec 31st 1937 Map Revised  
 Correct as of Dec 31st 1936 Map Revised  
 Correct as of Dec 31st 1935 Map Revised  
 Correct as of Dec 31st 1934 Map Revised  
 Correct as of Dec 31st 1933 Map Revised  
 Correct as of Dec 31st 1932 Map Revised  
 Correct as of Dec 31st 1931 Map Revised  
 Correct as of Dec 31st 1930 Map Revised

Correct as of Dec 31st 1955 Map Revised  
 Correct as of Dec 31st 1954 Map Revised  
 Correct as of Dec 31st 1953 Map Revised  
 Correct as of Dec 31st 1952 Map Revised  
 Correct as of Dec 31st 1951 Map Revised  
 Correct as of Dec 31st 1950 No Revision  
 Correct as of Dec 31st 1949 Map Revised  
 Correct as of Dec 31st 1948 No Revision  
 Correct as of Dec 31st 1947 Map Revised  
 Correct as of Dec 31st 1946 No Revision  
 Correct as of Dec 31st 1945 Map Revised  
 Correct as of Dec 31st 1944 Map Revised  
 Correct as of Dec 31st 1943 Map Revised

CORRECT	NO OF DEC 31	REVISION
	1955	
	1954	
	1953	
	1952	
	1951	
	1950	
	1949	
	1948	
	1947	
	1946	
	1945	
	1944	
	1943	



Correct as of Dec 31st 1954 Map Revised  
 Correct as of Dec 31st 1953 Map Revised  
 Correct as of Dec 31st 1952 Map Revised  
 Correct as of Dec 31st 1951 Map Revised  
 Correct as of Dec 31st 1950 No Revision  
 Correct as of Dec 31st 1949 Map Revised  
 Correct as of Dec 31st 1948 No Revision  
 Correct as of Dec 31st 1947 Map Revised  
 Correct as of Dec 31st 1946 No Revision  
 Correct as of Dec 31st 1945 Map Revised  
 Correct as of Dec 31st 1944 Map Revised  
 Correct as of Dec 31st 1943 Map Revised

NOTES  
 Valuation Section includes all terminal lands and facilities owned by The P.C. & St. L. Ry. Co. between MD P15B and MD C-3, except the right of way and improvements between MD P15B and a high street, known as the C.N. Division owned by the B.C. & R.R. Co. and included in Valuation Section 2-D-6.

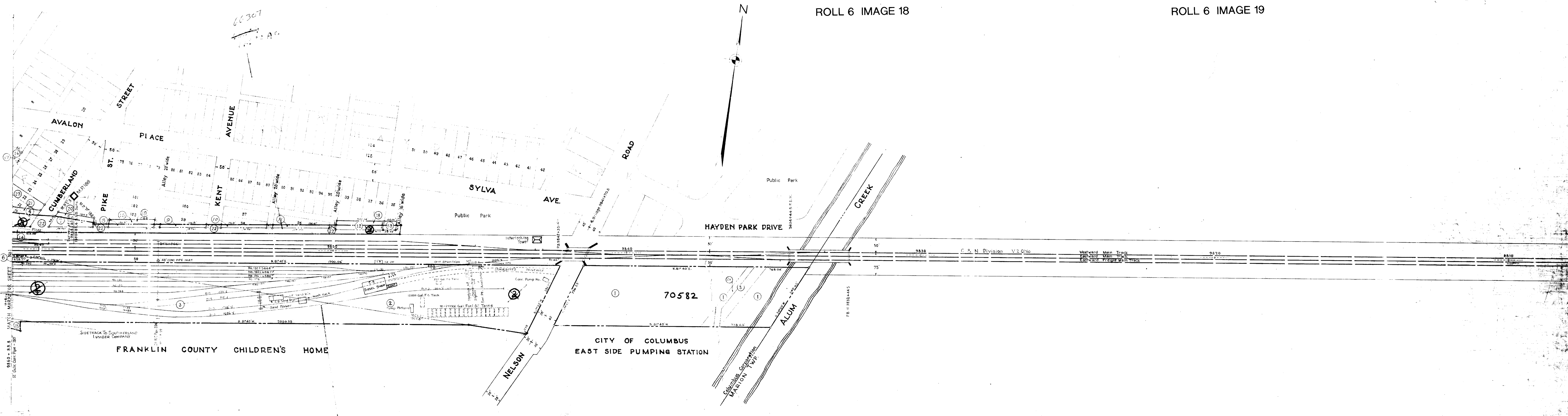
Sheet No. 67-1-13 Ohio of Pittsburgh, Cincinnati, Chicago & St. Louis Railway from Survey Station 9854+82.5 to Survey Station 9913+68.8

RIGHT OF WAY AND TRACK MAP  
**PITTSBURGH, CINCINNATI, CHICAGO & ST. LOUIS RY.**

PITTSBURGH DIVISION  
 STATION - 9854+82.5 TO STATION 9913+68.8

SCALE 1" = 100'  
 JUNE 30, 1950  
 OFFICE OF VALUATION ENGINEER  
 PITTSBURGH, PA.





66307  
A.C.

66252  
29.371 AC.

AS OF DEC. 31	CORRECT	REVISED
YEAR	YES	NO
1857		
1866		
1880		
1890		
1892		
1893		
1894		
1895		
1896		
1897		
1898		
1899		
1900		

Correct as of Dec. 31st, 1935: No Revision  
 Correct as of Dec. 31st, 1934: No Revision  
 Correct as of Dec. 31st, 1933: No Revision  
 Correct as of Dec. 31st, 1932: Map Revised  
 Correct as of Dec. 31st, 1931: No Revision  
 Correct as of Dec. 31st, 1930: No Revision  
 Correct as of Dec. 31st, 1929: Map Revised  
 Correct as of Dec. 31st, 1948: No Revision  
 Correct as of Dec. 31st, 1947: Map Revised  
 Correct as of Dec. 31st, 1946: Map Revised  
 Correct as of Dec. 31st, 1945: Map Revised  
 Correct as of Dec. 31st, 1944: Map Revised  
 Correct as of Dec. 31st, 1943: No Revision  
 Correct as of Dec. 31st, 1942: Map Revised  
 Correct as of Dec. 31st, 1941: Map Revised  
 Correct as of Dec. 31st, 1940: Map Revised

**PHILA. BALTO. & WASHINGTON R. R.**  
 FORMERLY  
**RIGHT OF WAY AND TRACK MAP**  
**PITTSBURGH, CINCINNATI, CHICAGO & ST. LOUIS RY.**  
 PITTSBURGH DIVISION

STATION TO STATION  
 SCALE: 1 1/4" = 100 FT. JUNE 30, 1916  
 OFFICE OF VALUATION ENGINEER  
 PHILADELPHIA, PA.

