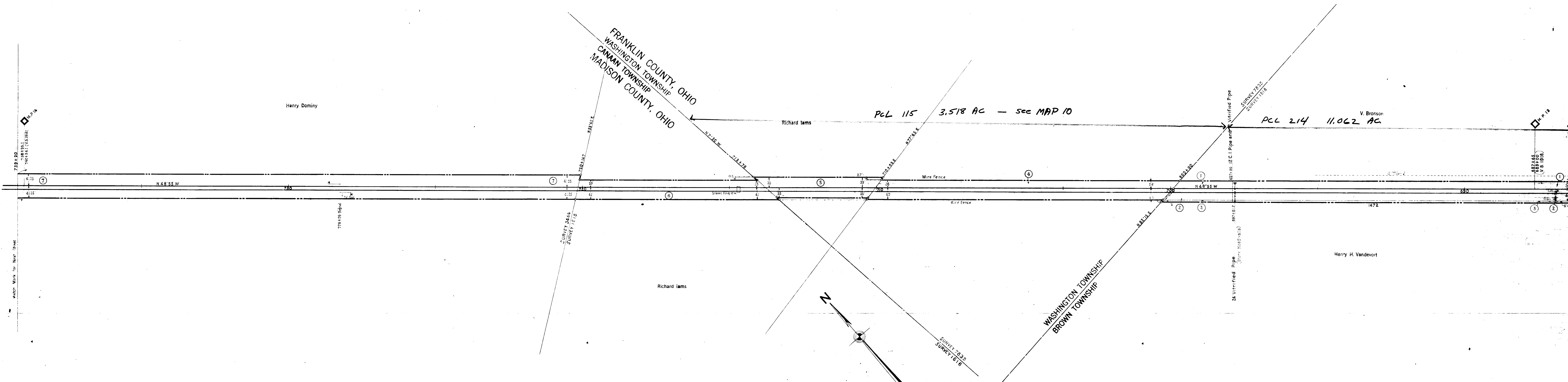


ROLL 5 IMAGE 1



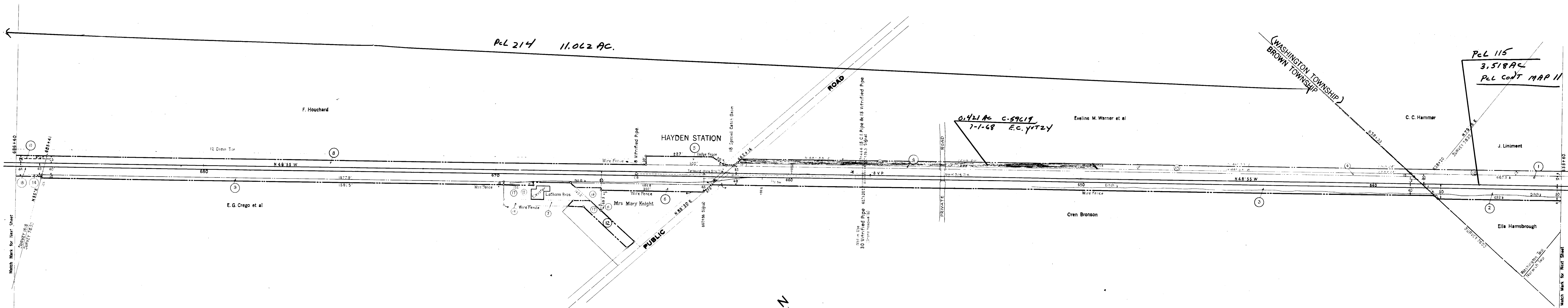
Corrected as of Dec. 31st, 1955 - No Revision	Corrected as of Dec. 31st, 1954 - No Revision	Corrected as of Dec. 31st, 1953 - No Revision	Corrected as of Dec. 31st, 1952 - No Revision	Corrected as of Dec. 31st, 1951 - No Revision	Corrected as of Dec. 31st, 1950 - No Revision	Corrected as of Dec. 31st, 1949 - No Revision	Corrected as of Dec. 31st, 1948 - No Revision	Corrected as of Dec. 31st, 1947 - No Revision	Corrected as of Dec. 31st, 1946 - No Revision	Corrected as of Dec. 31st, 1945 - No Revision	Corrected as of Dec. 31st, 1944 - No Revision	Corrected as of Dec. 31st, 1943 - No Revision

Corrected as of Dec. 31st, 1929 - No Revision	Corrected as of Dec. 31st, 1928 - No Revision	Corrected as of Dec. 31st, 1927 - No Revision	Corrected as of Dec. 31st, 1926 - No Revision	Corrected as of Dec. 31st, 1925 - No Revision	Corrected as of Dec. 31st, 1924 - No Revision	Corrected as of Dec. 31st, 1923 - No Revision	Corrected as of Dec. 31st, 1922 - No Revision	Corrected as of Dec. 31st, 1921 - No Revision	Corrected as of Dec. 31st, 1920 - No Revision	Corrected as of Dec. 31st, 1919 - No Revision	Corrected as of Dec. 31st, 1918 - No Revision	Corrected as of Dec. 31st, 1917 - No Revision

Corrected as of Dec. 31st, 1929 - No Revision	Corrected as of Dec. 31st, 1928 - No Revision	Corrected as of Dec. 31st, 1927 - No Revision	Corrected as of Dec. 31st, 1926 - No Revision	Corrected as of Dec. 31st, 1925 - No Revision	Corrected as of Dec. 31st, 1924 - No Revision	Corrected as of Dec. 31st, 1923 - No Revision	Corrected as of Dec. 31st, 1922 - No Revision	Corrected as of Dec. 31st, 1921 - No Revision	Corrected as of Dec. 31st, 1920 - No Revision	Corrected as of Dec. 31st, 1919 - No Revision	Corrected as of Dec. 31st, 1918 - No Revision	Corrected as of Dec. 31st, 1917 - No Revision

Sheet No. 11 of V. 4 Ohio, of Pittsburgh, Cincinnati, Chicago & St. Louis Railway, from Survey Station 686+40 to Survey Station 739+20

PHILA. BALTO. & WASHINGTON R. R.
FORMERLY
RIGHT OF WAY AND TRACK MAP
PITTSBURGH, CINCINNATI, CHICAGO & ST. LOUIS R.
INDIANAPOLIS DIVISION
STATION 686 + 40 TO STATION 739 + 20
SCALE: 1 IN = 100 FT. JUNE 30, 1916
OFFICE OF VALUATION ENGINEER
PITTSBURGH, PA.



SCHEDULE OF LENGTHS AND TOTALS

Side Trk Number	Location	Class	Length June 30 18	Total	Remarks
			R.R. Co. Private		
070	Brown Twp		2143	2143	Part on Map 9
6			184	184	
8			3930	3930	Part on Map 11
			556	556	

CORRECT AS OF	REVISED
DEC. 31	YR. NO.
1890	
1891	
1892	
1893	
1894	
1895	
1896	
1897	
1898	
1899	
1900	

Correct as of Dec. 31st, 1955: No Revision
 Correct as of Dec. 31st, 1954: No Revision
 Correct as of Dec. 31st, 1953: Map Revised
 Correct as of Dec. 31st, 1952: Map Revised
 Correct as of Dec. 31st, 1951: No Revision
 Correct as of Dec. 31st, 1950: No Revision
 Correct as of Dec. 31st, 1949: No Revision
 Correct as of Dec. 31st, 1948: No Revision
 Correct as of Dec. 31st, 1947: No Revision
 Correct as of Dec. 31st, 1946: No Revision
 Correct as of Dec. 31st, 1945: No Revision
 Correct as of Dec. 31st, 1944: Map Revised
 Correct as of Dec. 31st, 1943: Map Revised

Correct as of Dec. 31st, 1942: No Revision
 Correct as of Dec. 31st, 1941: No Revision
 Correct as of Dec. 31st, 1940: Map Revised
 Correct as of Dec. 31st, 1939: No Revision
 Correct as of Dec. 31st, 1938: No Revision
 Correct as of Dec. 31st, 1937: No Revision
 Correct as of Dec. 31st, 1936: No Revision
 Correct as of Dec. 31st, 1935: No Revision
 Correct as of Dec. 31st, 1934: No Revision
 Correct as of Dec. 31st, 1933: Map Revised
 Correct as of Dec. 31st, 1932: Map Revised
 Correct as of Dec. 31st, 1931: Map Revised
 Correct as of Dec. 31st, 1930: No Revision

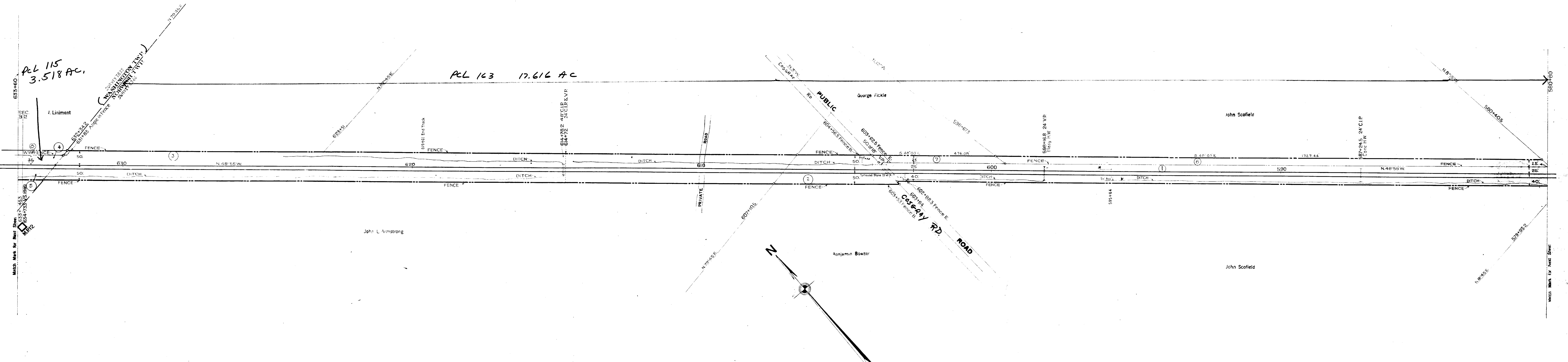
Correct as of Dec. 31st 1929: Map Revised
 Correct as of Dec. 31st 1928: Map Revised
 Correct as of Dec. 31st 1927: Map Revised
 Correct as of June 30th 1927: No Revision
 Correct as of June 30th 1926: No Revision
 Correct as of June 30th 1925: No Revision
 Correct as of June 30th 1924: No Revision
 Correct as of June 30th 1923: Map Revised
 Correct as of June 30th 1922: Map Revised
 Correct as of June 30th 1921: No Revision
 Correct as of June 30th 1920: No Revision
 Correct as of June 30th 1919: No Revision
 Correct as of June 30th 1918: No Revision
 Correct as of June 30th 1917: No Revision

Sheet No. 10 of V. 4 Ohio, of Pittsburgh, Cincinnati, Chicago & St. Louis Railway, from Survey Station 633+60 to Survey Station 686+40
 Chief Draftsman

PHILA. BALTO. & WASHINGTON R. R.
 FORMERLY
 RIGHT OF WAY AND TRACK MAP
 PITTSBURGH, CINCINNATI, CHICAGO & ST. LOUIS RY.
 INDIANAPOLIS DIVISION
 STATION 633 + 60 TO STATION 686 + 40
 SCALE: 1 IN. = 100 FT. JUNE 30, 1916
 OFFICE OF VALUATION ENGINEER
 PITTSBURGH, PA.

FRANKLIN COUNTY, OHIO
VIRGINIA MILITARY DISTRICT

ROLL 5 IMAGE 4



SCHEDULE OF SIDINGS AND CLOSINGS

Side Trk Number	Location	Class	R.R. Co.	Private	Total	Remarks
5	Norwich Ave	1382			1382	
6	Washington Ave	630			630	

Year	Correct as of	Revision	Map	ed
1929	Dec. 31st, 1929	No Revision	No	ion
1928	Dec. 31st, 1928	No Revision	No	ion
1927	Dec. 31st, 1927	Map Revised	Map	ed
1926	June 30th, 1927	Map Revised	Map	ed
1925	June 30th, 1926	No Revision	No	ion
1924	June 30th, 1925	No Revision	No	ion
1923	Dec. 31st, 1923	4 No Revision	No	ion
1922	Dec. 31st, 1922	3 No Revision	No	ion
1921	Dec. 31st, 1921	2 No Revision	No	ion
1920	Dec. 31st, 1920	1 No Revision	No	ion
1919	Dec. 31st, 1919	0 No Revision	No	ion
1918	Dec. 31st, 1918	15 No Revision	Map	ed
1917	Dec. 31st, 1917	18 No Revision	No	ion
1916	Dec. 31st, 1916	17 No Revision	No	ion

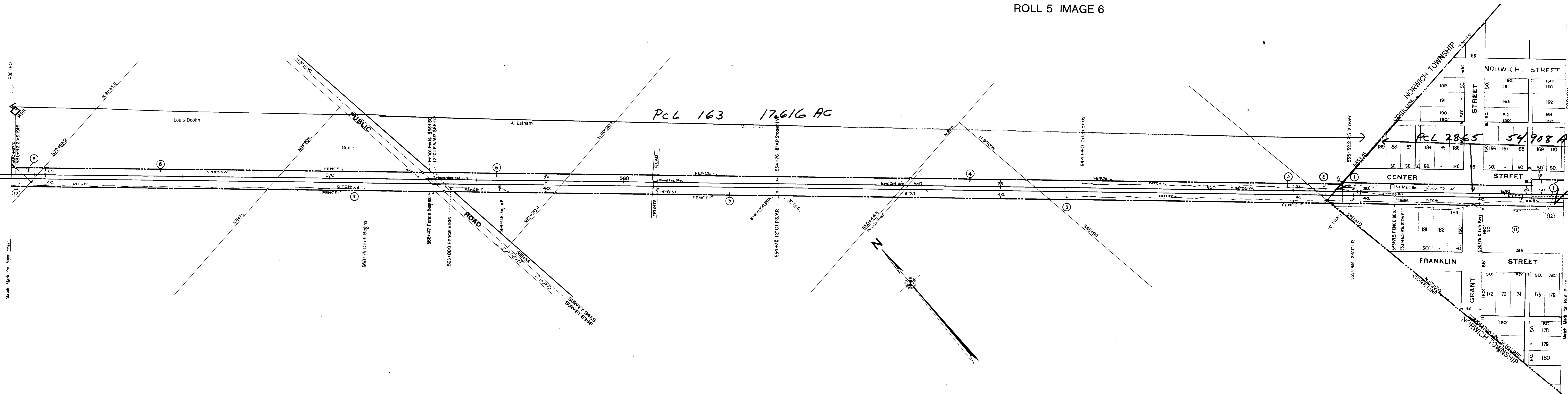
Sheet No. 9 of V. 4 Ohio, of Pittsburgh, Cincinnati, Chicago & St. Louis Railway, from Survey Station 580+80 to Survey Station 633+60
Chief Draftsman

PHILA. BALTO. & WASHINGTON R. R.
RIGHT OF WAY AND TRACK MAP
PITTSBURGH, CINCINNATI, CHICAGO & ST. LOUIS RY.
INDIANAPOLIS DIVISION
STATION 580+80 TO STATION 633+60
SCALE: 1 IN = 100 FT. JUNE 30, 1916
OFFICE OF VALUATION ENGINEER
PITTSBURGH, PA.

FRANKLIN COUNTY, OHIO
VIRGINIA MILITARY DISTRICT

ROLL 5 IMAGE 5

ROLL 5 IMAGE 6



Side Trk Number	Location	Class	Length June 30, 1918	Total	Remarks
1	Hillard Corp	R R Co	1.87	1.87	Shown on Map 7
2		B			Added 6.30.20 Absorbed by TK No 8-3-25-30

1
2
3
4
5
6
7
8
9
10
11
12

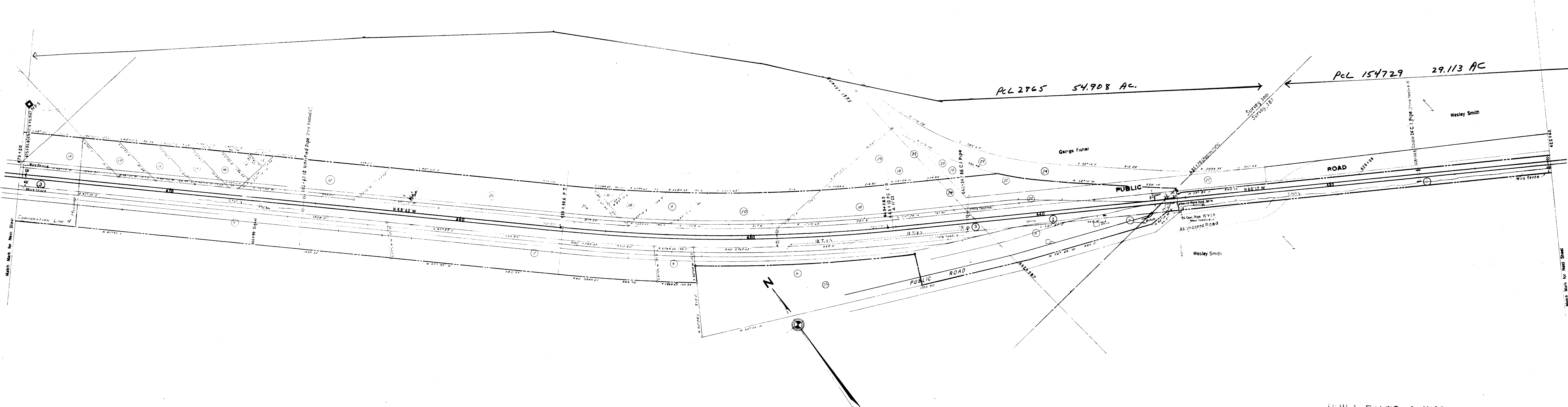
Correct as of Dec. 31st, 1955-No Revision	Correct as of Dec. 31st, 1954-No Revision	Correct as of Dec. 31st, 1953-No Revision	Correct as of Dec. 31st, 1952-No Revision	Correct as of Dec. 31st, 1951-No Revision	Correct as of Dec. 31st, 1950-No Revision	Correct as of Dec. 31st, 1949-No Revision	Correct as of Dec. 31st, 1948-No Revision	Correct as of Dec. 31st, 1947-No Revision	Correct as of Dec. 31st, 1946-No Revision	Correct as of Dec. 31st, 1945-No Revision	Correct as of Dec. 31st, 1944-No Revision	Correct as of Dec. 31st, 1943-No Revision
Correct as of Dec. 31st, 1955-No Revision	Correct as of Dec. 31st, 1954-No Revision	Correct as of Dec. 31st, 1953-No Revision	Correct as of Dec. 31st, 1952-No Revision	Correct as of Dec. 31st, 1951-No Revision	Correct as of Dec. 31st, 1950-No Revision	Correct as of Dec. 31st, 1949-No Revision	Correct as of Dec. 31st, 1948-No Revision	Correct as of Dec. 31st, 1947-No Revision	Correct as of Dec. 31st, 1946-No Revision	Correct as of Dec. 31st, 1945-No Revision	Correct as of Dec. 31st, 1944-No Revision	Correct as of Dec. 31st, 1943-No Revision
Correct as of Dec. 31st, 1929 No Revision	Correct as of Dec. 31st, 1928 Map Revised	Correct as of Dec. 31st, 1927 Map Revised	Correct as of Dec. 31st, 1926 Map Revised	Correct as of Dec. 31st, 1925 No Revision	Correct as of Dec. 31st, 1924 No Revision	Correct as of Dec. 31st, 1923 No Revision	Correct as of Dec. 31st, 1922 No Revision	Correct as of Dec. 31st, 1921 No Revision	Correct as of Dec. 31st, 1920 No Revision	Correct as of Dec. 31st, 1919 No Revision	Correct as of Dec. 31st, 1918 No Revision	Correct as of Dec. 31st, 1917 No Revision

PHILA. BALTO. & WASHINGTON R. R.
FORMERLY
RIGHT OF WAY AND TRACK MAP
PITTSBURGH, CINCINNATI, CHICAGO & ST. LOUIS RY.
INDIANAPOLIS DIVISION
STATION 528+00 TO STATION 580+80
SCALE: 1 IN. = 100 FT. JUNE 30, 1918
OFFICE OF VALUATION ENGINEER
PITTSBURGH, PA.

FRANKLIN COUNTY, OHIO
 VIRGINIA MILITARY DISTRICT
 NORWICH TOWNSHIP

ROLL 5 IMAGE 9

ROLL 5 IMAGE 8



SCHEDULE OF SIDINGS AND CROSSOVERS

Side Tr. H. Number	Location	Class	Length - June 30	Total	Remarks
12	Norwich Twp				Removed 6/30/18

12	
13	
14	
15	
16	
17	
18	
19	
20	
21	
22	
23	
24	
25	
26	
27	
28	
29	
30	
31	
32	
33	
34	
35	
36	
37	
38	
39	
40	
41	
42	
43	
44	
45	
46	
47	
48	
49	
50	
51	
52	
53	
54	
55	
56	
57	
58	
59	
60	
61	
62	
63	
64	
65	
66	
67	
68	
69	
70	
71	
72	
73	
74	
75	
76	
77	
78	
79	
80	
81	
82	
83	
84	
85	
86	
87	
88	
89	
90	
91	
92	
93	
94	
95	
96	
97	
98	
99	
100	

Correct as of Dec. 31st, 1955- No Revision	Correct as of Dec. 31st, 1942- No Revision	Correct as of Dec. 31st, 1929- No Revision
Correct as of Dec. 31st, 1954- No Revision	Correct as of Dec. 31st, 1941- No Revision	Correct as of Dec. 31st, 1928- No Revision
Correct as of Dec. 31st, 1953- No Revision	Correct as of Dec. 31st, 1940- Map Revised	Correct as of Dec. 31st, 1927- Map Revised
Correct as of Dec. 31st, 1952- No Revision	Correct as of Dec. 31st, 1939- No Revision	Correct as of June 30th, 1926- No Revision
Correct as of Dec. 31st, 1951- No Revision	Correct as of Dec. 31st, 1938- No Revision	Correct as of June 30th, 1925- No Revision
Correct as of Dec. 31st, 1950- No Revision	Correct as of Dec. 31st, 1937- No Revision	Correct as of June 30th, 1924- No Revision
Correct as of Dec. 31st, 1949- Map Revised	Correct as of Dec. 31st, 1936- No Revision	Correct as of June 30th, 1923- No Revision
Correct as of Dec. 31st, 1948- No Revision	Correct as of Dec. 31st, 1935- No Revision	Correct as of June 30th, 1922- No Revision
Correct as of Dec. 31st, 1947- No Revision	Correct as of Dec. 31st, 1934- No Revision	Correct as of June 30th, 1921- No Revision
Correct as of Dec. 31st, 1946- No Revision	Correct as of Dec. 31st, 1933- No Revision	Correct as of June 30th, 1920- No Revision
Correct as of Dec. 31st, 1945- No Revision	Correct as of Dec. 31st, 1932- No Revision	Correct as of June 30th, 1919- No Revision
Correct as of Dec. 31st, 1944- Map Revised	Correct as of Dec. 31st, 1931- No Revision	Correct as of June 30th, 1918- Map Revised
Correct as of Dec. 31st, 1943- No Revision		Correct as of June 30th, 1917- No Revision

Sheet No. 6 of V. 4 Ohio, of Pittsburgh, Cincinnati, Chicago & St. Louis Railway, from Survey Station 422+40 to Survey Station 475+22
 Chief Draftsman

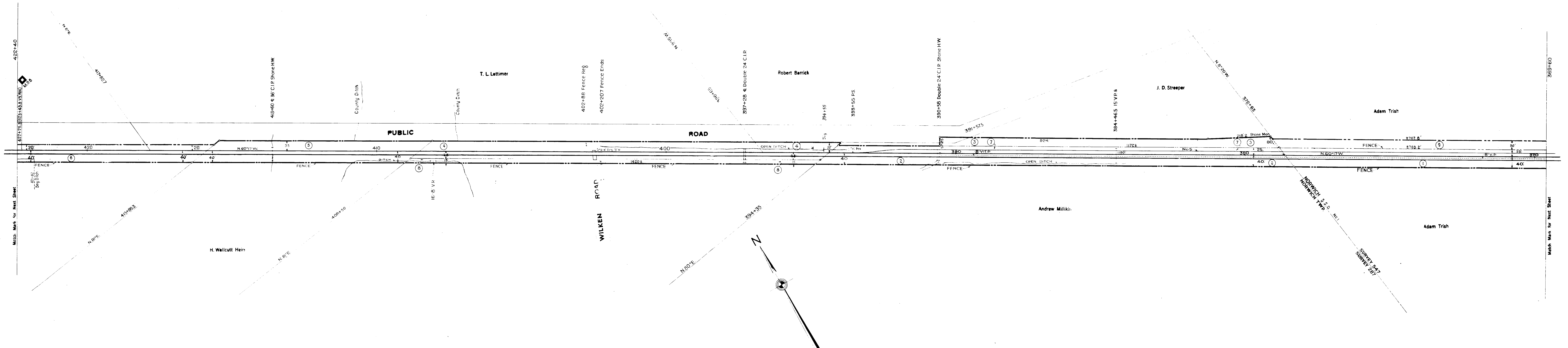
PHILA. BALTO. & WASHINGTON R. R.
 FORMERLY
 RIGHT OF WAY AND TRACK MAP
 PITTSBURGH, CINCINNATI, CHICAGO & ST. LOUIS RY.
 INDIANAPOLIS DIVISION
 STATION 422+40 TO STATION 475+20
 SCALE: 1 IN = 200 FT. JUNE 30, 1918
 OFFICE OF VALUATION ENGINEER
 PITTSBURGH, PA.

FRANKLIN COUNTY OHIO
 VIRGINIA MILITARY DISTRICT
 NORWICH TOWNSHIP

ALL PROP THIS MAP
 PCL 154729 29.113 AC

ROLL 5 IMAGE 10

ROLL 5 IMAGE 11

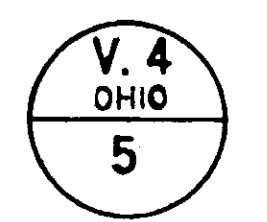


Side Trk Number	Location	Total Length - June 30, 1916	Remarks
		H.R.C.O. Private Total	
5	Norwich Twp		Listed on Map 6
6	Norwich Twp		Removed 10/15/1928

Year	Corrected as of	Revised	Map	ed
1929	Dec. 31st, 1929	No	Map	ed
1928	Dec. 31st, 1928	Map	Revised	
1927	Dec. 31st, 1927	Map	Revised	
1926	June 30th, 1926	Map	Revised	
1925	June 30th, 1925	Map	Revised	
1924	Dec. 31st, 1924	No	Revision	
1923	Dec. 31st, 1923	No	Revision	
1922	Dec. 31st, 1922	No	Revision	
1921	Dec. 31st, 1921	No	Revision	
1920	Dec. 31st, 1920	No	Revision	
1919	Dec. 31st, 1919	No	Revision	
1918	Dec. 31st, 1918	No	Revision	
1917	Dec. 31st, 1917	No	Revision	
1916	Dec. 31st, 1916	No	Revision	

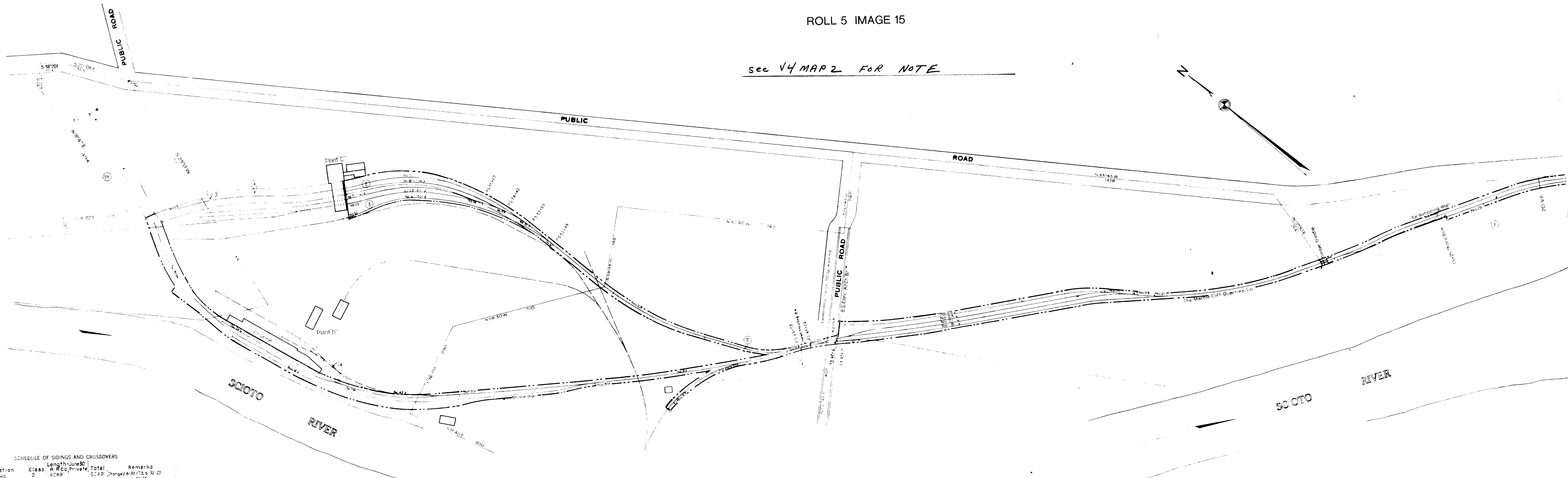
Sheet No. 5 of V. 4 Ohio, of Pittsburgh, Cincinnati, Chicago & St. Louis Railway, from Survey Station 369+60 to Survey Station 422+40
 Chief Draftsman

PHILA. BALTO. & WASHINGTON R. R.
 FORMERLY
 RIGHT OF WAY AND TRACK MAP
 PITTSBURGH, CINCINNATI, CHICAGO & ST. LOUIS RY.
 INDIANAPOLIS DIVISION
 STATION 369+60 TO STATION 422+40
 SCALE: 1"=100 FT. JUNE 30, 1916
 OFFICE OF VALUATION ENGINEER
 PITTSBURGH, PA.



ROLL 5 IMAGE 15

see V4 MAP 2 FOR NOTE



SCHEDULE OF SIDINGS AND CROSSOVERS

Side Trk Number	Location	Class	Length - June 30, 1918	Total	Remarks
9	Prefix	Private	6249	6249	Changed 6-30-17 & 6-30-25
10			1247	1247	Lengthened 6-30-25
21			1177	1177	
22			980	980	Lengthened 6-30-25
23			866	866	
31			300	300	
39			268	268	Changed 6-30-25 & 6-30-25
41			878	878	6-30-25
42			228	228	
43			663	663	Retired 6-30-25
44					Retired 6-30-25
45					Retired 6-30-25
46					Retired 6-30-25
47					Retired 6-30-25
48					Retired 6-30-25
49					Retired 6-30-25
50					Retired 6-30-25
51					Retired 6-30-25
52					Retired 6-30-25
53					Retired 6-30-25
54					Retired 6-30-25
55					Retired 6-30-25
56					Retired 6-30-25
57					Retired 6-30-25
58					Retired 6-30-25
59					Retired 6-30-25
60					Retired 6-30-25

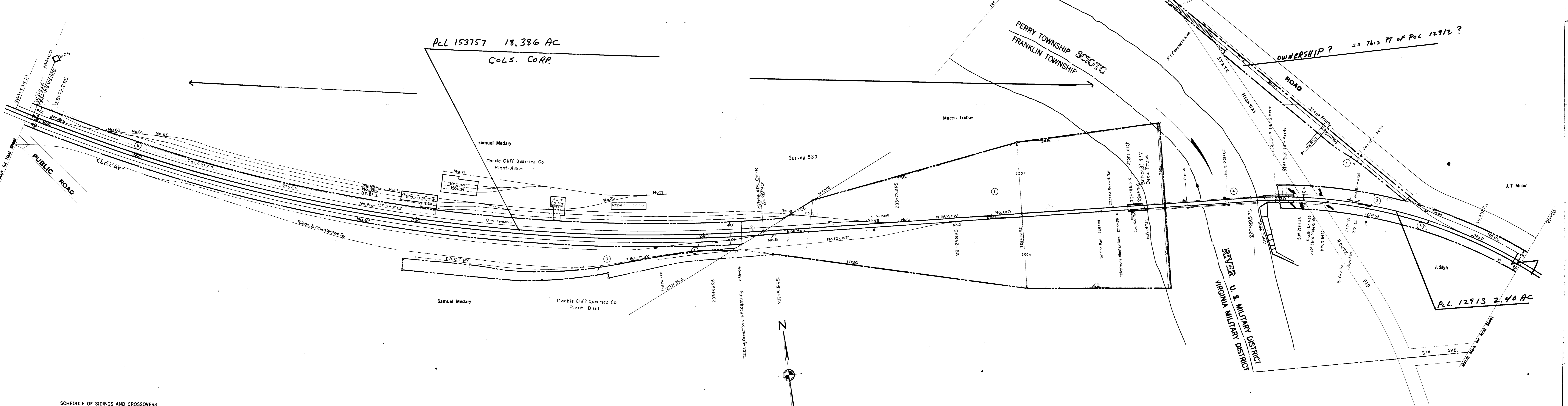
Correct as of Dec. 31st, 1955 - No Revision	Correct as of Dec. 31st, 1954 - No Revision	Correct as of Dec. 31st, 1953 - No Revision	Correct as of Dec. 31st, 1952 - No Revision	Correct as of Dec. 31st, 1951 - No Revision	Correct as of Dec. 31st, 1950 - No Revision	Correct as of Dec. 31st, 1949 - No Revision	Correct as of Dec. 31st, 1948 - No Revision	Correct as of Dec. 31st, 1947 - No Revision	Correct as of Dec. 31st, 1946 - No Revision	Correct as of Dec. 31st, 1945 - No Revision	Correct as of Dec. 31st, 1944 - No Revision	Correct as of Dec. 31st, 1943 - No Revision
Correct as of Dec. 31st, 1929 - No Revision	Correct as of Dec. 31st, 1928 - No Revision	Correct as of Dec. 31st, 1927 - Map Revised	Correct as of Dec. 31st, 1927 - Map Revised	Correct as of Dec. 31st, 1927 - No Revision	Correct as of Dec. 31st, 1926 - No Revision	Correct as of Dec. 31st, 1925 - Map Revised	Correct as of Dec. 31st, 1925 - Map Revised	Correct as of Dec. 31st, 1925 - No Revision	Correct as of Dec. 31st, 1925 - No Revision	Correct as of Dec. 31st, 1925 - No Revision	Correct as of Dec. 31st, 1925 - No Revision	Correct as of Dec. 31st, 1925 - No Revision
Correct as of Dec. 31st, 1925 - No Revision	Correct as of Dec. 31st, 1925 - No Revision	Correct as of Dec. 31st, 1925 - No Revision	Correct as of Dec. 31st, 1925 - No Revision	Correct as of Dec. 31st, 1925 - No Revision	Correct as of Dec. 31st, 1925 - No Revision	Correct as of Dec. 31st, 1925 - No Revision	Correct as of Dec. 31st, 1925 - No Revision	Correct as of Dec. 31st, 1925 - No Revision	Correct as of Dec. 31st, 1925 - No Revision	Correct as of Dec. 31st, 1925 - No Revision	Correct as of Dec. 31st, 1925 - No Revision	Correct as of Dec. 31st, 1925 - No Revision

Sheet No. 21 of V. 4 Ohio, of Pittsburgh, Cincinnati, Chicago & St. Louis Railway, from Survey Station 71+95 to Survey Station 71+12

RIGHT OF WAY AND TRACK MAP
PITTSBURGH, CINCINNATI, CHICAGO & ST. LOUIS RY
INDIANAPOLIS DIVISION
STATION 71+95 TO STATION 71+12
SCALE: 1" = 100 FT. JUNE 30, 1918
OFFICE OF VALUATION ENGINEER
PITTSBURGH, PA.

ROLL 5 IMAGE 16

ROLL 5 IMAGE 17



SCHEDULE OF SIDINGS AND CROSSOVERS

Side	Yrs	Location	Class	Length	RR Co.	Private	Total	Remarks
11		Perry Twp.	B	835			835	Part on Map No. 2-1
9								See Map No. 2-1
01		Franklin Twp.	Y	199			199	
12			B	2056			2056	Removed 6-30-25
16			B					Removed 6-30-25
5			Y	3722			3722	
18			B					Removed 6-30-25
63			B	182	2378	2560		
77			B	86		86		
61			B	180	2505	2685		
65			B		1964	1964		
8			Y	2079		2079		Shortened 6-5-30-27 See Map 8
09			Y					Removed 6-30-25
22			B	83		83		
71			B	1654		1654		
24			B	839		839		
67			B		1321	1321		
26			B	366		366		
75			B		193	193		
69			B		354	354		
9A		Perry Twp.	B					Removed 6-30-25

CORRECT AS OF	REVISED	YES	NO
1921			
1922			
1923			
1924			
1925			
1926			
1927			
1928			
1929			
1930			
1931			
1932			
1933			
1934			
1935			
1936			
1937			
1938			
1939			
1940			
1941			
1942			
1943			
1944			
1945			
1946			
1947			
1948			
1949			
1950			

Correct as of Dec. 31st, 1929 No Revision
 Correct as of Dec. 31st, 1928 No Revision
 Correct as of Dec. 31st, 1927 Map Revised
 Correct as of Dec. 31st, 1926 Map Revised
 Correct as of Dec. 31st, 1925 Map Revised
 Correct as of Dec. 31st, 1924 No Revision
 Correct as of Dec. 31st, 1923 Map Revised
 Correct as of Dec. 31st, 1922 No Revision
 Correct as of Dec. 31st, 1921 No Revision
 Correct as of Dec. 31st, 1920 No Revision
 Correct as of Dec. 31st, 1919 No Revision
 Correct as of Dec. 31st, 1918 No Revision
 Correct as of Dec. 31st, 1917 No Revision

P.B. & WASHINGTON R. R.
 FORMERLY
RIGHT OF WAY AND TRACK MAP
PITTSBURGH, CINCINNATI, CHICAGO & ST. LOUIS RY
 INDIANAPOLIS DIVISION
 STATION 211 + 20 TO STATION 264 + 00
 SCALE: 1 IN = 100 FT. JUNE 30, 1918
 OFFICE OF VALUATION ENGINEER
 PITTSBURGH, PA.

