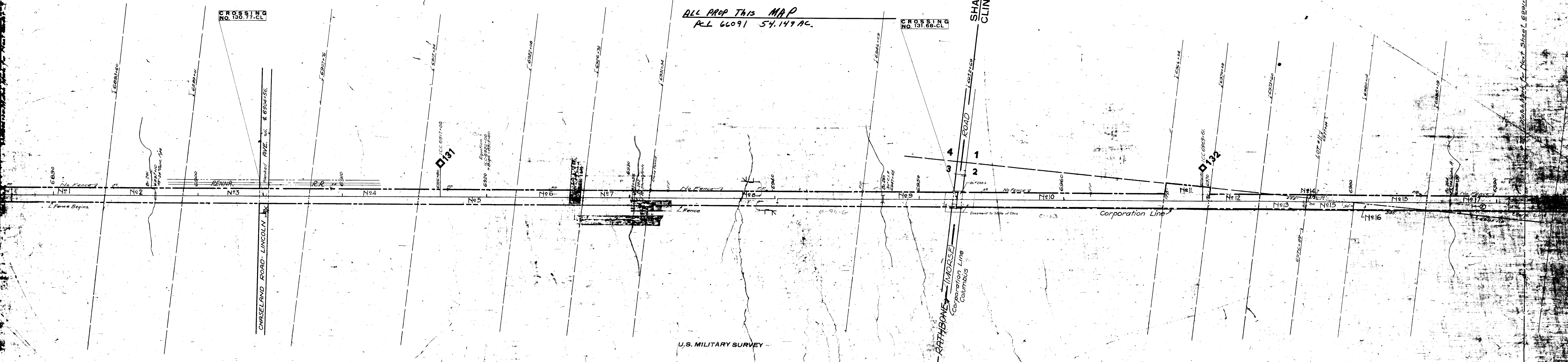


ALL PROP THIS MAP
P.L. 66091 54.147 AC.

Item	A.F.E.	Completion Report
	No.	Period Year
Sale of Land - Part of parcels 687	6294	1925
Gen. Exp. Bonds (part) Rank of 5 to 52	6294	1925
Part of Bonds of 1914-1915	6294	1925
Part of Bonds of 1916-1917	6294	1925
Part of Bonds of 1918-1919	6294	1925
Part of Bonds of 1920-1921	6294	1925
Part of Bonds of 1922-1923	6294	1925
Part of Bonds of 1924-1925	6294	1925
Part of Bonds of 1926-1927	6294	1925
Part of Bonds of 1928-1929	6294	1925
Part of Bonds of 1930-1931	6294	1925
Part of Bonds of 1932-1933	6294	1925
Part of Bonds of 1934-1935	6294	1925
Part of Bonds of 1936-1937	6294	1925
Part of Bonds of 1938-1939	6294	1925
Part of Bonds of 1940-1941	6294	1925
Part of Bonds of 1942-1943	6294	1925
Part of Bonds of 1944-1945	6294	1925
Part of Bonds of 1946-1947	6294	1925
Part of Bonds of 1948-1949	6294	1925
Part of Bonds of 1950-1951	6294	1925
Part of Bonds of 1952-1953	6294	1925
Part of Bonds of 1954-1955	6294	1925
Part of Bonds of 1956-1957	6294	1925
Part of Bonds of 1958-1959	6294	1925
Part of Bonds of 1960-1961	6294	1925
Part of Bonds of 1962-1963	6294	1925
Part of Bonds of 1964-1965	6294	1925
Part of Bonds of 1966-1967	6294	1925
Part of Bonds of 1968-1969	6294	1925
Part of Bonds of 1970-1971	6294	1925
Part of Bonds of 1972-1973	6294	1925
Part of Bonds of 1974-1975	6294	1925
Part of Bonds of 1976-1977	6294	1925
Part of Bonds of 1978-1979	6294	1925
Part of Bonds of 1980-1981	6294	1925
Part of Bonds of 1982-1983	6294	1925
Part of Bonds of 1984-1985	6294	1925
Part of Bonds of 1986-1987	6294	1925
Part of Bonds of 1988-1989	6294	1925
Part of Bonds of 1990-1991	6294	1925
Part of Bonds of 1992-1993	6294	1925
Part of Bonds of 1994-1995	6294	1925
Part of Bonds of 1996-1997	6294	1925
Part of Bonds of 1998-1999	6294	1925
Part of Bonds of 2000-2001	6294	1925
Part of Bonds of 2002-2003	6294	1925
Part of Bonds of 2004-2005	6294	1925
Part of Bonds of 2006-2007	6294	1925
Part of Bonds of 2008-2009	6294	1925
Part of Bonds of 2010-2011	6294	1925
Part of Bonds of 2012-2013	6294	1925
Part of Bonds of 2014-2015	6294	1925
Part of Bonds of 2016-2017	6294	1925
Part of Bonds of 2018-2019	6294	1925
Part of Bonds of 2020-2021	6294	1925
Part of Bonds of 2022-2023	6294	1925
Part of Bonds of 2024-2025	6294	1925



U.S. MILITARY SURVEY

NUMBER	GRANTOR	GRANTEE	INSTRUMENT	DATE	RECORD	CUSTODIAN NUMBER	V. 32-26
1	Moses Maynard,	CCAC RR.	Appropriation	10/1/49	15/416	22	Franklin Co., Ohio.
2	A. Cleveland,	"	WD	11/27/49	47/192	25	"
3	Stephen L. Peck,	"	"	8/24/49	83/196	26	"
4	Chester Finney,	"	"	6/2/49	19/449	28	"
5	J. W. Case's Heirs,	"	Appropriation	12/1/49	15/428	29	"
6	Heirs of Giles S. Fryor,	"	"	8/1/49	15/361	29	"
7	George Swinerton,	"	"	8/1/49	15/358	29	"
8	John Soule,	"	WD	8/10/49	41/213	27	"
9	W. H. Albery (Trustee)	CCACST. L. Ry.	WD	3/20/62	348/141	27	"
10	Heirs of V. Soule,	CCAC RR.	Appropriation	12/1/49	15/425	27	"
11	Wm. H. Albery (Trustee)	CCACST. L. Ry.	WD	3/20/62	348/141	27	"
12	Charles H. Wetmore,	CCAC RR.	"	8/21/49	41/211	29	"
13	Wm. H. Albery (Trustee)	CCACST. L. Ry.	WD	3/20/62	348/141	27	"
14	C. Fuller,	CCAC RR.	WD	8/11/49	41/210	30	"
15	George P. Whip,	"	"	6/30/49	41/203	31	"
16	George W. Ingham,	"	"	6/18/49	41/197	32	"
17	George Whip,	"	"	6/30/49	41/204	33	"
18	Wm. H. Sweels,	"	Release	8/17/49	41/215	34	"
19	S. A. Bacon,	"	"	8/16/49	41/217	35	"
20	Roswell Cooke,	"	"	8/17/49	41/216	36	"

1951 3-26-53.
1952 No Change
1953 11-19-56
1954 No Change
1955 "
1956 "
1957 "
1959 "
1960 5-17-67
1971 No Change

COLLECTED TO DECEMBER 31, 1950.
CORRECTED TO DECEMBER 31, 1952
CORRECTED TO DECEMBER 31, 1956
CORRECTED TO DECEMBER 31, 1967
CORRECTED TO DECEMBER 31, 1971

RIGHT-OF-WAY AND TRACK MAP
THE CLEVELAND, CINCINNATI, CHICAGO & ST. LOUIS RY.

Operated by
THE CLEVELAND, CINCINNATI, CHICAGO & ST. LOUIS RY. CO.
CLEVELAND DIVISION - MAIN LINE
Sta. 5886+00 to Sta. 5891+50

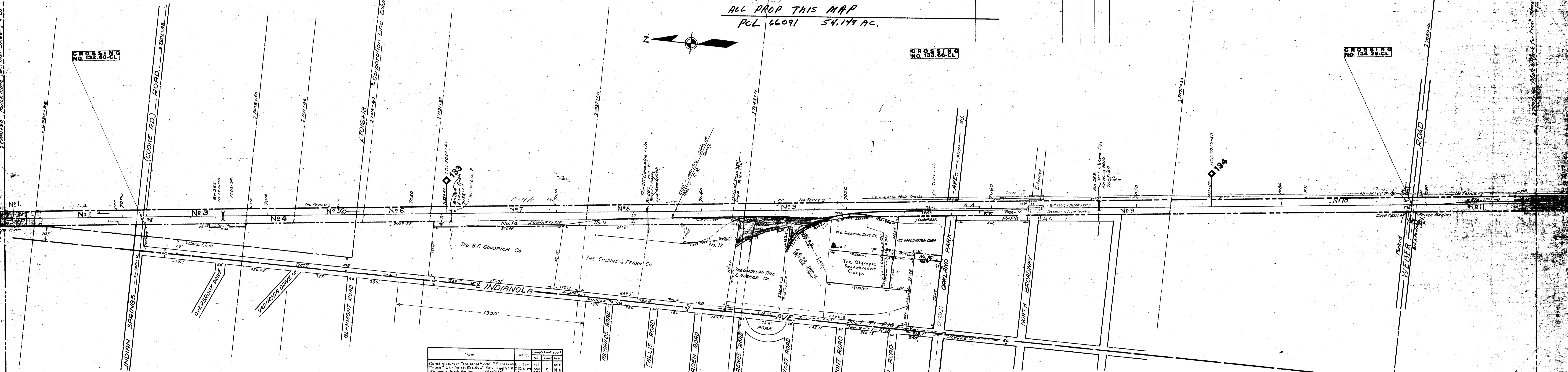
Material for Next Sheet 66092

ROLL 2 IMAGE 5

ROLL 2 IMAGE 6

ALL PROP THIS MAP
PCL 66091 54.174 AC.

Item	AFE	Competitive Bids
No.	Year	
Grade Separation E North Broadway Br #287-C	13599	256 1963
Police District Park Way Crossing	10878-19	215 1962



NUMBER	GRANTOR	GRANTEE	INSTRUMENT	DATE	RECORD	CUSTODIAN
17	The Olympic Amusement Corp.	C.C. & E.T. Ry.	W.D.	7-31-56	1936/274	121 Franklin Co., Ohio

Item	AFE	Competitive Bids
No.	Year	
Const. street #12 length 300' P.S. 2000-444	C.E. 2300	377 1916
Track #12 Const. Ext. 522' Total length 891'	C.E. 2709	353 1916
Indiana Road Paving (Realt.)	None	354 1917
Purchase of Land-Par #12-#13-#14	C.E. 3401	6 1917
Const. Trk #11-133 in. - 4-18-18	C.E. 358	4 1918
Const. Inspectors Shanty - 32'x18'	AFE 398	36 1922
Const. water supply line	- 312	87 1924
Const. King gates and tower - Oakland Park Ave.	- 415	82 1924
Weber Road - 20' x 100' (Asim.)	- 415	82 1924
Recreation Trk #12-14-15-17 & Const. driveway	- 3753	236 1924
Weber Road - 20' x 100' (Asim.)	- 415	82 1924
Extending Trk #217 - New 18' 287'	- 2577	183 1916
Ext. Trk #2000-2010 - 30' x 100' - 18' x 100'	- 3591	30 1925
Sale of Land - Prof. Par #13, 14 & 15	- 3591	30 1925
Const. Trk #12	- 3591	30 1925
Const. Trk #13	- 3591	30 1925
Const. Trk #14	- 3591	30 1925
Const. Trk #15	- 3591	30 1925
Const. Trk #16	- 3591	30 1925
Const. Trk #17	- 3591	30 1925
Const. Trk #18	- 3591	30 1925
Const. Trk #19	- 3591	30 1925
Const. Trk #20	- 3591	30 1925
Const. Trk #21	- 3591	30 1925
Const. Trk #22	- 3591	30 1925
Const. Trk #23	- 3591	30 1925
Const. Trk #24	- 3591	30 1925
Const. Trk #25	- 3591	30 1925
Const. Trk #26	- 3591	30 1925
Const. Trk #27	- 3591	30 1925
Const. Trk #28	- 3591	30 1925
Const. Trk #29	- 3591	30 1925
Const. Trk #30	- 3591	30 1925
Const. Trk #31	- 3591	30 1925
Const. Trk #32	- 3591	30 1925
Const. Trk #33	- 3591	30 1925
Const. Trk #34	- 3591	30 1925
Const. Trk #35	- 3591	30 1925
Const. Trk #36	- 3591	30 1925
Const. Trk #37	- 3591	30 1925
Const. Trk #38	- 3591	30 1925
Const. Trk #39	- 3591	30 1925
Const. Trk #40	- 3591	30 1925
Const. Trk #41	- 3591	30 1925
Const. Trk #42	- 3591	30 1925
Const. Trk #43	- 3591	30 1925
Const. Trk #44	- 3591	30 1925
Const. Trk #45	- 3591	30 1925
Const. Trk #46	- 3591	30 1925
Const. Trk #47	- 3591	30 1925
Const. Trk #48	- 3591	30 1925
Const. Trk #49	- 3591	30 1925
Const. Trk #50	- 3591	30 1925
Const. Trk #51	- 3591	30 1925
Const. Trk #52	- 3591	30 1925
Const. Trk #53	- 3591	30 1925
Const. Trk #54	- 3591	30 1925
Const. Trk #55	- 3591	30 1925
Const. Trk #56	- 3591	30 1925
Const. Trk #57	- 3591	30 1925
Const. Trk #58	- 3591	30 1925
Const. Trk #59	- 3591	30 1925
Const. Trk #60	- 3591	30 1925
Const. Trk #61	- 3591	30 1925
Const. Trk #62	- 3591	30 1925
Const. Trk #63	- 3591	30 1925
Const. Trk #64	- 3591	30 1925
Const. Trk #65	- 3591	30 1925
Const. Trk #66	- 3591	30 1925
Const. Trk #67	- 3591	30 1925
Const. Trk #68	- 3591	30 1925
Const. Trk #69	- 3591	30 1925
Const. Trk #70	- 3591	30 1925
Const. Trk #71	- 3591	30 1925
Const. Trk #72	- 3591	30 1925
Const. Trk #73	- 3591	30 1925
Const. Trk #74	- 3591	30 1925
Const. Trk #75	- 3591	30 1925
Const. Trk #76	- 3591	30 1925
Const. Trk #77	- 3591	30 1925
Const. Trk #78	- 3591	30 1925
Const. Trk #79	- 3591	30 1925
Const. Trk #80	- 3591	30 1925
Const. Trk #81	- 3591	30 1925
Const. Trk #82	- 3591	30 1925
Const. Trk #83	- 3591	30 1925
Const. Trk #84	- 3591	30 1925
Const. Trk #85	- 3591	30 1925
Const. Trk #86	- 3591	30 1925
Const. Trk #87	- 3591	30 1925
Const. Trk #88	- 3591	30 1925
Const. Trk #89	- 3591	30 1925
Const. Trk #90	- 3591	30 1925
Const. Trk #91	- 3591	30 1925
Const. Trk #92	- 3591	30 1925
Const. Trk #93	- 3591	30 1925
Const. Trk #94	- 3591	30 1925
Const. Trk #95	- 3591	30 1925
Const. Trk #96	- 3591	30 1925
Const. Trk #97	- 3591	30 1925
Const. Trk #98	- 3591	30 1925
Const. Trk #99	- 3591	30 1925
Const. Trk #100	- 3591	30 1925

NUMBER	GRANTOR	GRANTEE	INSTRUMENT	DATE	RECORD	CUSTODIAN
1	Roswell Cooke,	CCAC RR.	Release	8/17/49	41-216	56 Franklin Co., Ohio.
2	Jacob Hoyt	CCAC RR	Release	6/26/49	41-203	56
3	Orville Webster,	CCAC RR	Release	8/11/49	41-214	56
4	Phillip Webster,	CCAC RR	Release	8/11/49	41-208	40
5	Jonathan Taylor,	CCAC RR	Release	8/18/49	41-218	41
6	Heirs of Nathaniel Root,	CCAC RR	Appropriation	10/1/49	15-415	41
7	James Webster	CCAC RR	WD	5/28/49	41-401	43
8	John Smith,	CCAC RR	Appropriation	6/1/49	18-243	44
9	Frederick Wyler,	CCAC RR	Appropriation	6/1/49	18-243	44
10	Darius F. Wilcox,	CCAC RR	Appropriation	6/1/49	18-243	44
11	City of Columbus, Ohio,	CCAC RR	Franchise	6/28/11	15-325	47
12	John Kertelur	CCAC RR	WD	10/31/17	612-209	56
13	Chas. M. Newman	CCAC RR	WD	9/15/17	612-272	56
14	The Thompson, Johnson, Thompson Co.	CCAC RR	WD	9/15/17	612-272	56
15	Chas. M. Newman	CCAC RR	WD	9/15/17	612-272	56
16	The Thompson, Johnson, Thompson Co.	CCAC RR	WD	9/15/17	612-272	56
17	Chas. M. Newman	CCAC RR	WD	9/15/17	612-272	56
18	Chas. M. Newman	CCAC RR	WD	9/15/17	612-272	56
19	Chas. M. Newman	CCAC RR	WD	9/15/17	612-272	56
20	Chas. M. Newman	CCAC RR	WD	9/15/17	612-272	56
21	Chas. M. Newman	CCAC RR	WD	9/15/17	612-272	56
22	Chas. M. Newman	CCAC RR	WD	9/15/17	612-272	56
23	Chas. M. Newman	CCAC RR	WD	9/15/17	612-272	56
24	Chas. M. Newman	CCAC RR	WD	9/15/17	612-272	56
25	Chas. M. Newman	CCAC RR	WD	9/15/17	612-272	56
26	Chas. M. Newman	CCAC RR	WD	9/15/17	612-272	56
27	Chas. M. Newman	CCAC RR	WD	9/15/17	612-272	56
28	Chas. M. Newman	CCAC RR	WD	9/15/17	612-272	56
29	Chas. M. Newman	CCAC RR	WD	9/15/17	612-272	56
30	Chas. M. Newman	CCAC RR	WD	9/15/17	612-272	56

1951 3-26-53
 1952 5-12-55
 1953 11-19-56
 1954 6-17-57
 1955 2-11-58
 1956 7-15-58
 1957 5-7-59
 1958 9-26-61
 1960 5-18-67
 1961 No Change

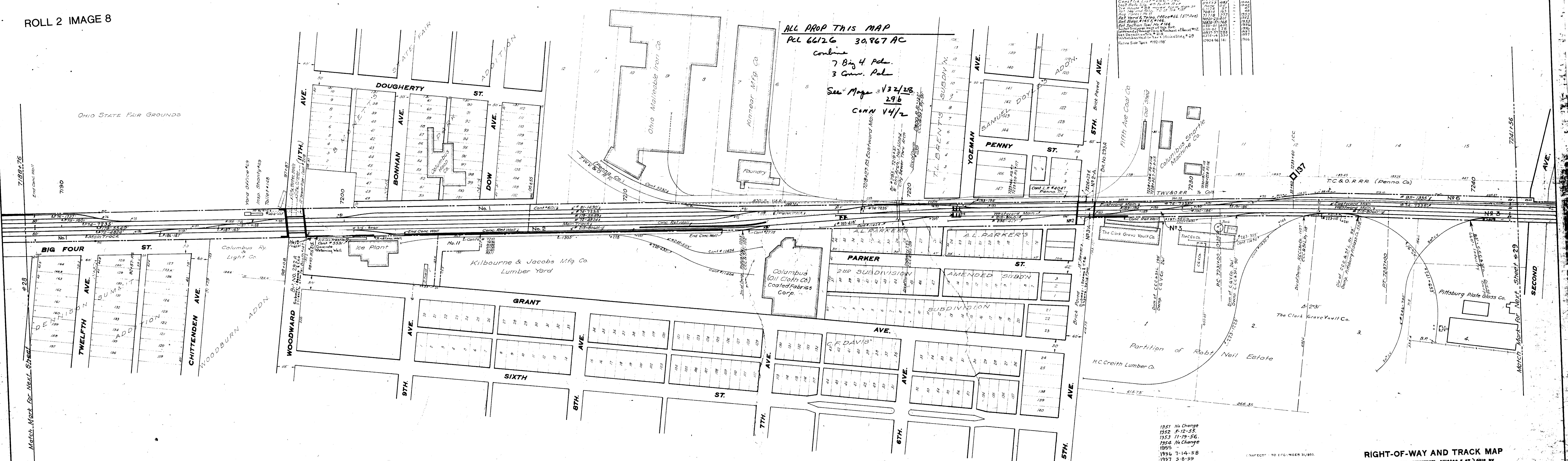
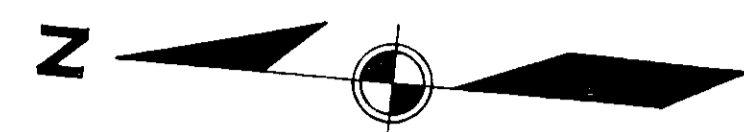
CORRECTED TO DECEMBER 31, 1950.
 CORRECTED TO DECEMBER 31, 1952.
 CORRECTED TO DECEMBER 31, 1954.
 CORRECTED TO DECEMBER 31, 1956.
 CORRECTED TO DECEMBER 31, 1958.
 CORRECTED TO DECEMBER 31, 1960.
 CORRECTED TO DECEMBER 31, 1962.

RIGHT-OF-WAY AND TRACK MAP
 THE CLEVELAND, CINCINNATI, CHICAGO & ST. LOUIS RY.
 Operated by
THE CLEVELAND, CINCINNATI, CHICAGO & ST. LOUIS RY. CO.
 CLEVELAND DIVISION - MAIN LINE
 S. a. 6991+90 To Sta. 7097+30
 Scale 1 in. = 200 Ft. June 30th, 1962

1750' to Mark for Next Street

1750' to Mark for Next Street

COLUMBUS, OHIO.



ALL PROP THIS MAP
PCL 66126 30.867 AC
combine
7 Big 4 Pds.
3 Conv. Pds.
See Maps 3132/28
296
CANN V4/2

None	1916	1918	1920	1922	1924	1926	1928	1930	1932	1934	1936	1938	1940	1942	1944	1946	1948	1950	1952	1954	1956	1958	1960	1962	1964	1966	
None	None	None	None	None	None	None	None	None	None	None	None	None	None	None	None	None	None	None	None	None	None	None	None	None	None	None	None

NUMBER	GRANTOR	GRANTEE	INSTRUMENT	DATE	RECORD	CUSTODIAN'S NUMBER	Franklin Co Ohio
1	Wm. Neil	C.C. & St. L.Ry.	Q.C.D.	6/30/53	51/185	49-A	
2	Lincoln Goodale		Appropriation	5/1/49	31/96	50	
2A	Right across Fifth St on E. Side of R/W		Ord. not Found	6/17/53		51	
3	Robert Neil		Ord. not Found	8/29/46	84/525	51	
3-A	Right to Cross Fifth St on W. Side of R/W		Ord. not Found				
4	Lease Cancelled						
5	Ohio State Board of Agriculture		Agreement	11/9/92	6/106	76	
6	Tel. Col. & Ohio River R.R.	C.C. & St. L.Ry.	W.D.	11/24/17	630/35	103	
7	Sold						
8							
9							
10	The Seventh Realty Co.		Easement	4/16/48	1462/78	111-B	
11	Hoffman Auto Body Service Inc.		W.D. & Easement	8/20/54	1994/84-188	111-B	
12							

1951 No Change
1952 F-12-53
1953 11-19-56
1954 No Change
1955
1956 7-14-58
1957 5-8-59
1959 No Change
60-61

CORRECTED TO DECEMBER 31, 1936
CORRECTED TO DECEMBER 31, 1935
CORRECTED TO DECEMBER 31, 1934
CORRECTED TO DECEMBER 31, 1930
CORRECTED TO DECEMBER 31, 1927

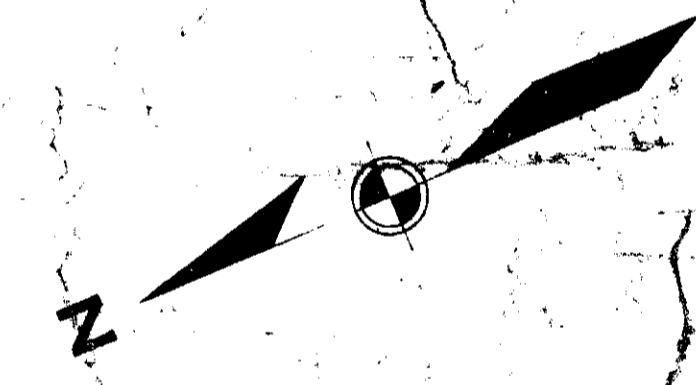
RIGHT-OF-WAY AND TRACK MAP
THE CLEVELAND, CINCINNATI, CHICAGO & ST. LOUIS RY.
Operated by
THE CLEVELAND, CINCINNATI, CHICAGO & ST. LOUIS RY. CO.
CLEVELAND DIVISION—MAIN LINE
Sta. 7188+76 To Sta. 7241+56
Scale 1 in. = 100 Ft. June 30th, 1918
Office of Valuation Engineer, Cincinnati, O.

Sheet No. 528-224 of V-32
From Survey Station 7188+76 to Survey Station 7241+56
L.S. ROSS
Valuation Engineer

66258
39.425 AC
Columbus
3 Big Acs
2 Cans
1 L.M.
2 P.B.W.

COLUMBUS OHIO

A = 32°59'
D = 2°40' R
O = 2°30' R
L = 42°00'



NUMBER	GRANTOR	GRANTEE	INSTRUMENT	DATE	RECORD	CUSTODIAN NUMBER	V. 52-B - SL-29-b
*1	Robert Neil,	CC&O RR.	WD	8/29/65	84/525	51	Franklin Co., Ohio.
2		Lease Cancelled					
3	Columbus and Xenia RR Co.	CCC&I Ry.	Deed of Partition	1/18/95	270/345	60	" " "
4	Robert Neil,	CC&O RR. and C&X RR.	WD	7/20/65	84/438	52	" " "
5	Columbus and Xenia RR Co.	CCC&I Ry.	Deed of Partition	1/18/95	270/345	60	" " "
5	Bethahaba Lazell, Columbus and Xenia RR Co.	CC&O RR. and CCC&I Ry.	Condemnation	12/31/50	19/538	55	" " "
6	George A. E. Lazell, et al.	CC&O RR. and CCC&I Ry.	Deed of Partition	1/18/95	270/345	60	" " "
7	Columbus and Xenia RR Co.	CC&O RR. and CCC&I Ry.	Condemnation	12/31/50	19/538	55	" " "
8	Bethahaba Lazell, Columbus and Xenia RR Co.	CC&O RR. and CCC&I Ry.	Deed of Partition	1/18/95	270/345	60	" " "
8	Gustavus Swan,	CC&O RR. and C&X RR.	WD	5/2/55	57/236	58	" " "
9	Columbus and Xenia RR Co.	CCC&I Ry.	Deed of Partition	1/18/95	270/345	60	" " "
9	Orange Johnson,	CC&O RR. and C&X RR.	WD	11/25/49	42/150	59	" " "
10	Hairs of Jane S. Parsons,	CCC&St. L. Ry. Co.	Lease (99 Yrs.)	1/4/02	13/321	80	" " "
11	John Minton, Jr.	" " "	WD	9/28/09	492/492	81	" " "
11	John Minton,	" " "	QCD	4/9/10	483/63	82	" " "
12	Dennis Kelly,	" " "	WD	7/13/11	522/36	82	" " "
12	Columbus and Xenia RR Co.	CCC&I Ry.	Deed of Partition	1/18/95	270/345	60	" " "
13	Agustus Whiting, et al.	CC&O RR. and C&X RR.	WD	8/1/64	81/65	56	" " "
14	Columbus and Xenia RR Co.	CCC&I Ry.	Deed of Partition	1/18/95	270/345	60	" " "
14	Wm. A. Neil,	CC&O RR. and C&X RR.	WD	4/8/64	79/602	57	" " "
14	City of Columbus, Ohio.	CCC&St. L. Ry. Co.	Ordinance	8/13/90		179	" " "
15	Katherine Murphy, et al.	" " "	Lease	6/1/10	8/118	254	" " "
16	Mary S. Page,	" " "	"	5/31/10	8/120	255	" " "
17	Emma A. Stickle,	" " "	"	6/4/10	8/124	256	" " "
18	Elmer D. Sharp,	" " "	"	5/31/10	8/122	237	" " "
19	F. E. Nelson, et al.	" " "	"	5/28/10	8/119	238	" " "
20	Kansas City Hay Press Co.	" " "	"	6/6/10	8/123	239	" " "
21	City of Columbus, Ohio.	" " "	Ordinance	6/26/05		2414	" " "
22	Right to cross Second St. with side track to Col. & Ohio River RR Co.	CCC&St. L. Ry. Co.	Ord. not found.				
23	Lease Cancelled						
1-A	Right to cross Second St. with side track to Col. & Ohio River RR Co.	CCC&St. L. Ry. Co.	Ord. not found.	11/24/17	630/35		
24-25	Lease Cancelled						
26	Lease Cancelled						
27	Lease Cancelled						
28	Columbus Union Depot Co.		Lease (15yrs)	1/31/17			

Item	A.F.E.	Completion	Year
Purchase of land parcels 244-25	None	1	1960
Refire Pits 2 & 3	None	1	1960
Acq of Pits No 27 by Lease	None	1	1960
Refire Pits 23 & Acq Pits 20 by Lease	None	1	1960
Refire Pits No 26 (Lease)	None	1	1960
Restoration to the State of Ohio	1989-24	438	1987
Assessment to State of Ohio for Highway purposes	1086-30	40	1960

Sold C-6039
9-25-73

Sold C-63039
9/25/73

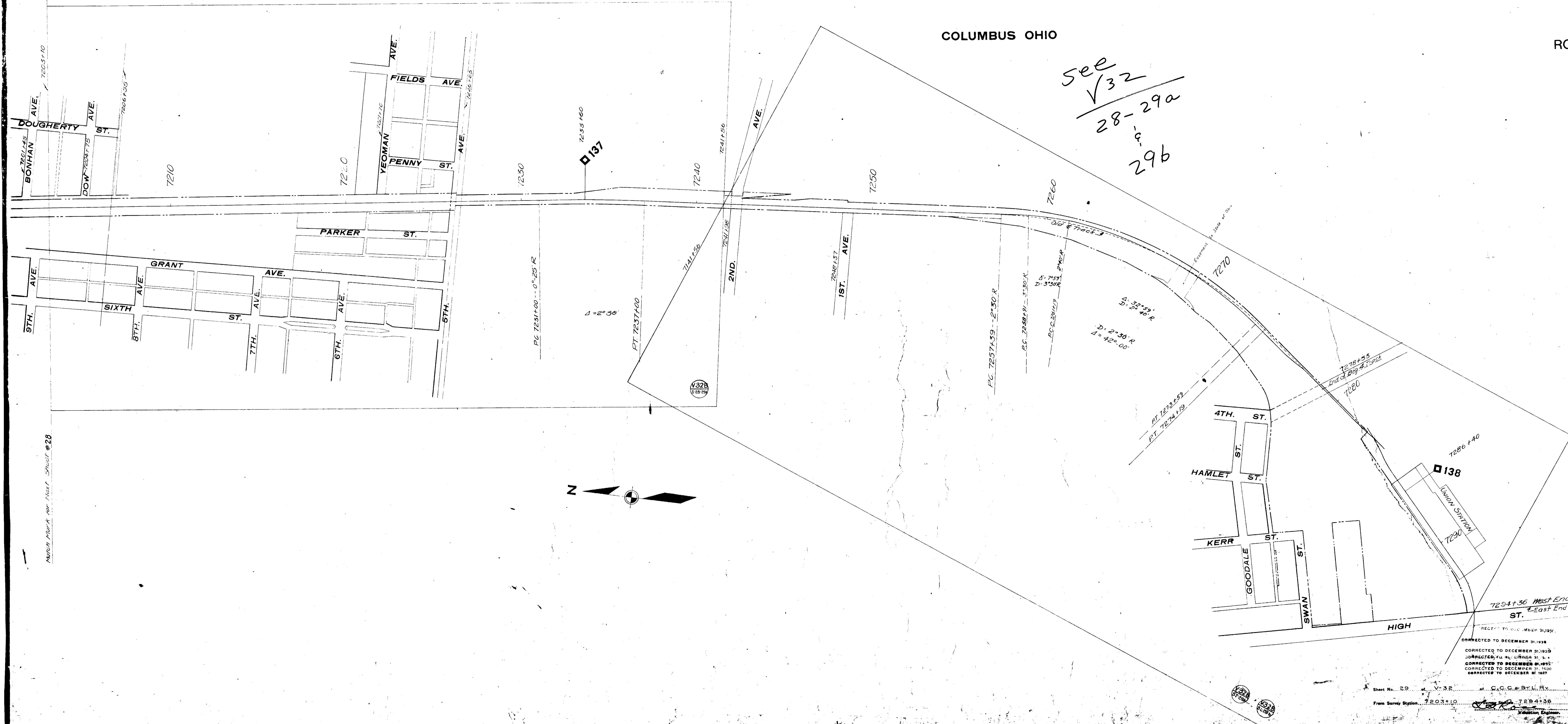
1951 No Change
1952 " "
1953 " "
1954 " "
1955 " "
1956 " "
1957 9-22-59
1959 No Change

CORRECTED TO DECEMBER 31, 1950
CORRECTED TO DECEMBER 31, 1950
CORRECTED TO DECEMBER 31, 1950
CORRECTED TO DECEMBER 31, 1950
CORRECTED TO DECEMBER 31, 1950
CORRECTED TO DECEMBER 31, 1950

STATION MAP LANDS
THE CLEVELAND, CINCINNATI, COLUMBUS & ST. LOUIS RR
OPERATED BY
THE CLEVELAND, CINCINNATI, COLUMBUS & ST. LOUIS RR CO.
CLEVELAND DIVISION - MAIN LINE

* See No. 4 - Sheet 5-26-29-a
* " " " " 5-26-29-a
* " " " " 5-26-29-a

see
V32
28-29a
&
29b



1951	No Change
1952	" "
1953	" "
1954	" "
1955	" "
1956	" "
1957	" "
1958	" "
1959	" "
1960	" "

7294+36 West End Vol. Sec. 52
 East End Vol. Sec. 31 Sheet 1

CONNECTED TO DECEMBER 31, 1955
 CORRECTED TO DECEMBER 31, 1959
 CORRECTED TO DECEMBER 31, 1962
 CORRECTED TO DECEMBER 31, 1965
 CORRECTED TO DECEMBER 31, 1968

RIGHT-OF-WAY AND TRACK MAP
 THE CLEVELAND, CINCINNATI, CHICAGO & ST. LOUIS RY.
 Operated by
THE CLEVELAND, CINCINNATI, CHICAGO & ST. LOUIS RY. CO.
 CLEVELAND DIVISION - MAIN LINE
 Sta. 7203+10 To Sta. 7294+36
 Scale 1 in. = 200 ft. June 30th, 1918.

Sheet No. 29 of V-32 of C.C. & ST. L. RY.
 From Survey Station 7203+10 To Station 7294+36
 Valuation Engineer

V32
29