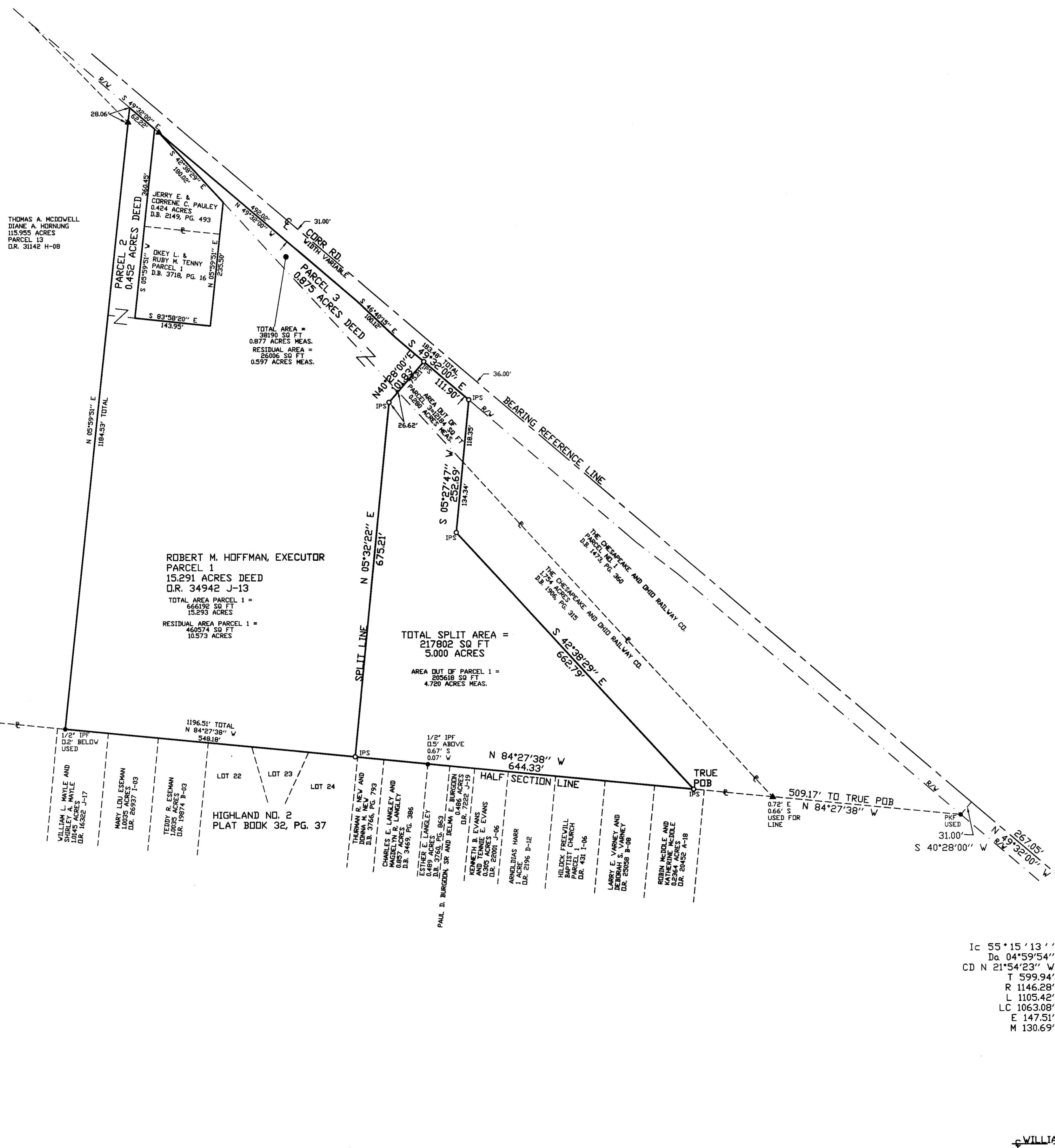


SPLIT OF 5.000 ACRES FROM A 15.274 ACRE TRACT AND A 0.876 ACRE TRACT

SITUATED in the State of Ohio, County of Franklin, City of Columbus, and being a part of Section 10, Township 4, Range 22, Refugee Lands, and being a part of a 15.291 acre tract (Parcel 1) and a part of 0.875 acre tract (Parcel 3) conveyed to Robert M. Hoffman, Executor, in Official Record 34942 J-13, Franklin County Recorders Office.

The Basis of Bearings is the centerline of Corr. Rd. as being South 49 degrees 32 minutes 00 seconds East, as shown on the right of way plat of Corr. Rd., pg. 2 of 24, Project No. S-405-01, found in the Franklin County Survey Records Dept.
All iron pins set are 5/8" rebar, 30" long, with a cap stamped 'JKJ SURVEYING'.

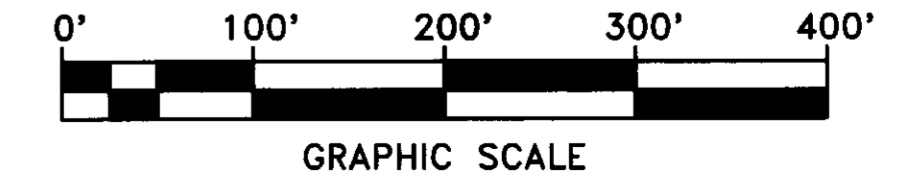


THIS DRAWING WAS PREPARED FROM AN ACTUAL FIELD SURVEY MADE BY PAUL K. MOORE & ASSOCIATES IN FEBRUARY OF 1998, AND REPRESENTS THE PREMISES SHOWN HEREON TO THE BEST OF OUR KNOWLEDGE.

Raymond J. Wood
RAYMOND J. WOOD REG. SURV. 7745 DATE 3/26/98

LEGEND

- IPS ○ IRON PIN SET
- IPF ● IRON PIN FOUND
- ☒ FCE MONUMENT
- ▲ RAILROAD MONUMENT FOUND
- D.R. OFFICIAL RECORD
- D.B. DEED BOOK
- PKF PK NAIL FOUND



DATE	BY	CHKD	APPD
02/16/98	RAW		
	JMW		
	APP		

SPLIT OF 5.000 ACRES FROM A
15.274 ACRE TRACT AND A
0.876 ACRE TRACT

J. & J. SURVEYING SERVICES, INC. dba
PAUL K. MOORE & ASSOCIATES
6515 E. LIVINGSTON AVENUE
REYNOLDSBURG, OHIO 43068
PH# (614) 866-9158
FAX# (614) 866-9132
© 1998 J. & J. SURVEYING SERVICES, INC.