



Evans, Mechwart, Hambleton & Tilton, Inc.
 Engineers • Surveyors • Planners • Scientists
 5500 New Albany Road, Columbus, OH 43054
 Phone: 614.775.4500 Toll Free: 888.775.3648

emht.com

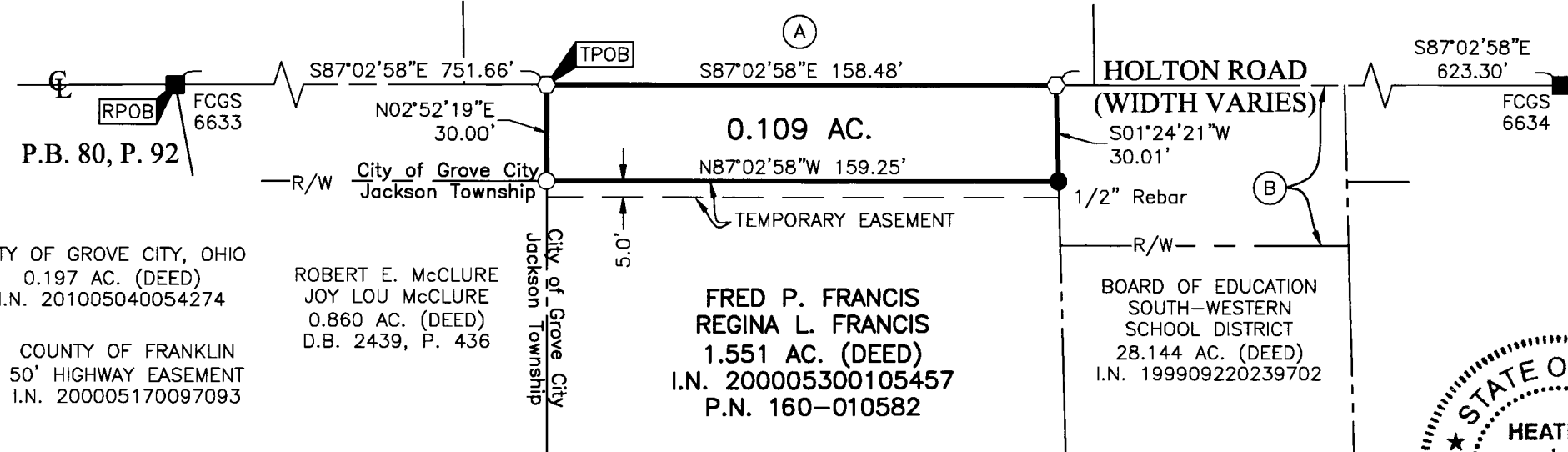
SURVEY OF ACREAGE PARCEL

VIRGINIA MILITARY DISTRICT SURVEY NUMBER 6840
 CITY OF GROVE CITY, COUNTY OF FRANKLIN, STATE OF OHIO

Date: January 25, 2021

Scale: 1" = 50'

Job No: 2019-0227



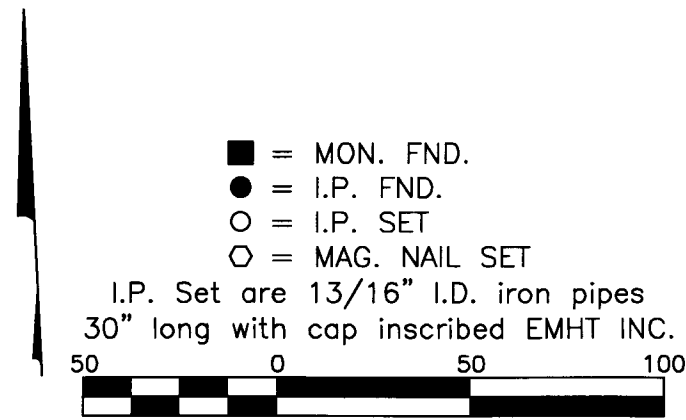
(A) CITY OF GROVE CITY, OHIO
 0.197 AC. (DEED)
 I.N. 201005040054274

(B) COUNTY OF FRANKLIN
 50' HIGHWAY EASEMENT
 I.N. 200005170097093

ROBERT E. McCLURE
 JOY LOU McCLURE
 0.860 AC. (DEED)
 D.B. 2439, P. 436

FRED P. FRANCIS
 REGINA L. FRANCIS
 1.551 AC. (DEED)
 I.N. 200005300105457
 P.N. 160-010582

BOARD OF EDUCATION
 SOUTH-WESTERN
 SCHOOL DISTRICT
 28.144 AC. (DEED)
 I.N. 199909220239702



BASIS OF BEARINGS:
 The bearings are based on the Ohio State Plane Coordinate System, South Zone, per NAD83 (1986 adjustment). Control for bearings was from coordinates of monuments FCGS 5548 and FCGS 5539, having a bearing of North 00° 21' 40" East for a portion of the centerline of Hoover Road, established by the Franklin County Engineering Department.

SURVEY NOTE:
 This survey was prepared using documents of record, prior plats of survey, and observed evidence located by an actual field survey.

RECEIVED
 OCT 31 2023
 Franklin County Engineer
 Cornell R. Robertson, P.E., P.S.



By Heather L. King 2/1/21
 Heather L. King
 Professional Surveyor No. 8307
 hking@emht.com
 Date