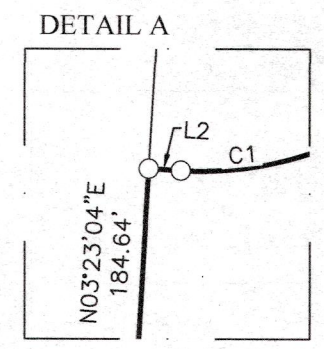
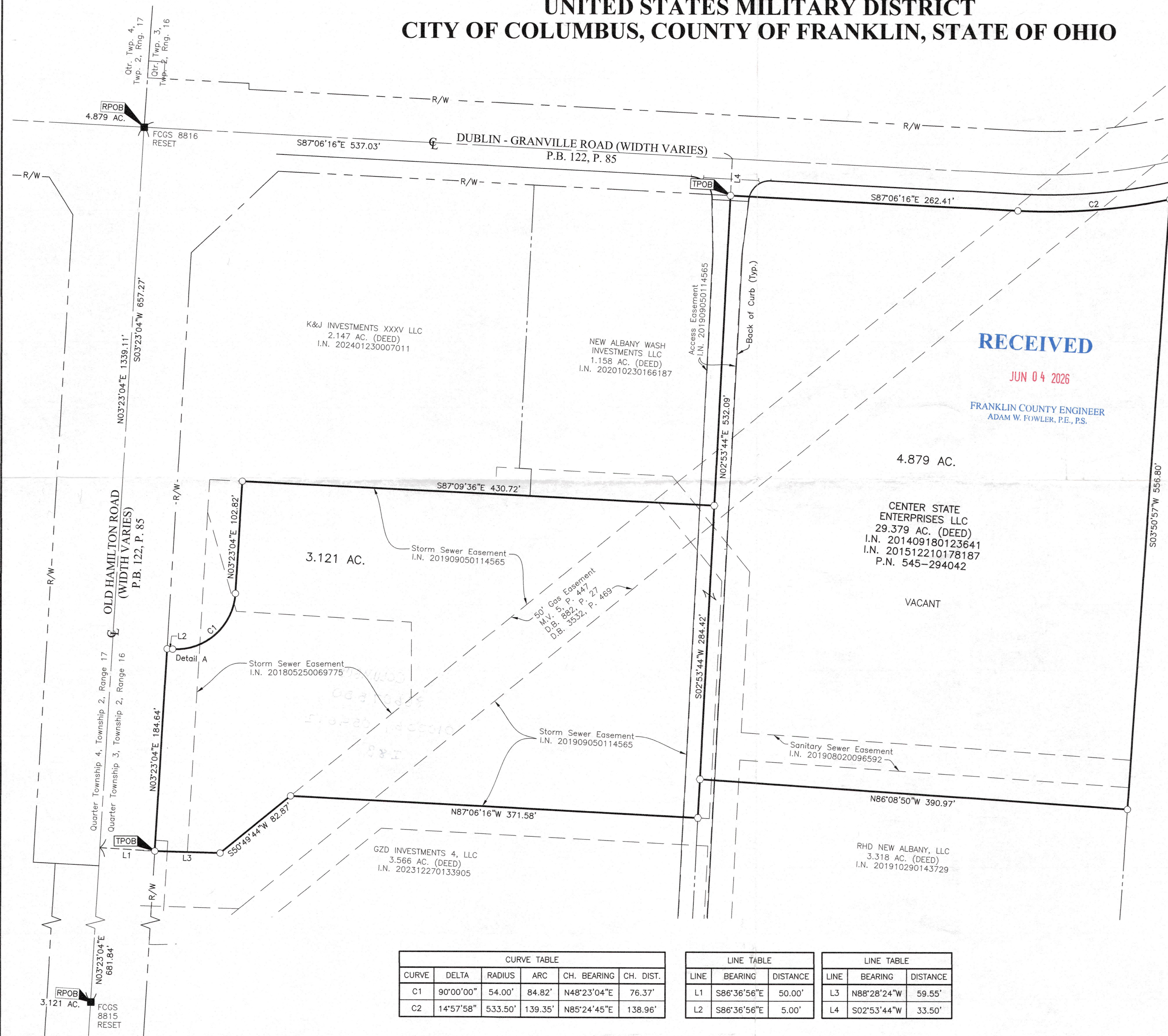


# SURVEY OF ACREAGE PARCELS

## QUARTER TOWNSHIP 3, TOWNSHIP 2, RANGE 16

### UNITED STATES MILITARY DISTRICT

### CITY OF COLUMBUS, COUNTY OF FRANKLIN, STATE OF OHIO



**LEGEND**

- Iron Pin Set
- Iron Pin Found
- Stone Found
- P.K. Nail Found
- Monument Found
- Magnetic Nail Set
- Magnetic Nail Found
- ▲ Railroad Spike Found

Iron Pins Set are 13/16" I.D. iron pipes 30" long with cap inscribed EMHT INC.

GRAPHIC SCALE (in feet)

**BASIS OF BEARINGS:**  
 Bearings are based on the Ohio State Plane Coordinate System, South Zone, as per NAD83 (2007 Adjustment). Control for bearings was from coordinates of monuments FCGS 8815 & FCGS 8816, having a bearing of North 03° 23' 04" East for a portion of the centerline of Hamilton Road (Relocated), established by the Franklin County Engineering Department, using Global Positioning System procedures and equipment.

**SURVEY NOTE:**  
 This survey was prepared using documents of record, prior plats of survey, and observed evidence located by an actual field survey in September 2014 and April 2020.



By Heather L. King Date 02/26/26  
 Heather L. King  
 Professional Surveyor No. 8307  
 hking@emht.com

CURVE TABLE					
CURVE	DELTA	RADIUS	ARC	CH. BEARING	CH. DIST.
C1	90°00'00"	54.00'	84.82'	N48°23'04"E	76.37'
C2	14°57'58"	533.50'	139.35'	N85°24'45"E	138.96'

LINE TABLE		
LINE	BEARING	DISTANCE
L1	S86°36'56"E	50.00'
L2	S86°36'56"E	5.00'

LINE TABLE		
LINE	BEARING	DISTANCE
L3	N88°28'24"W	59.55'
L4	S02°53'44"W	33.50'

<p>Evans, Mechwart, Hambleton &amp; Tilton, Inc.                  Engineers • Surveyors • Planners • Scientists                  5500 New Albany Road, Columbus, OH 43054                  Phone: 614.775.4500 Toll Free: 888.775.3648                  emht.com</p>	Date:	February 11, 2026
	Scale:	1" = 60'
	Job No:	2026-0074
	Sheet:	1 of 1

REVISIONS		
MARK	DATE	DESCRIPTION

I:\20260074\Drawings\04Sheets\Boundary\20260074-VS-BNDY-01.dwg plotted by King, Heather on 2/23/2026 1:26:30 PM last saved by hking on 2/23/2026 1:25:39 PM