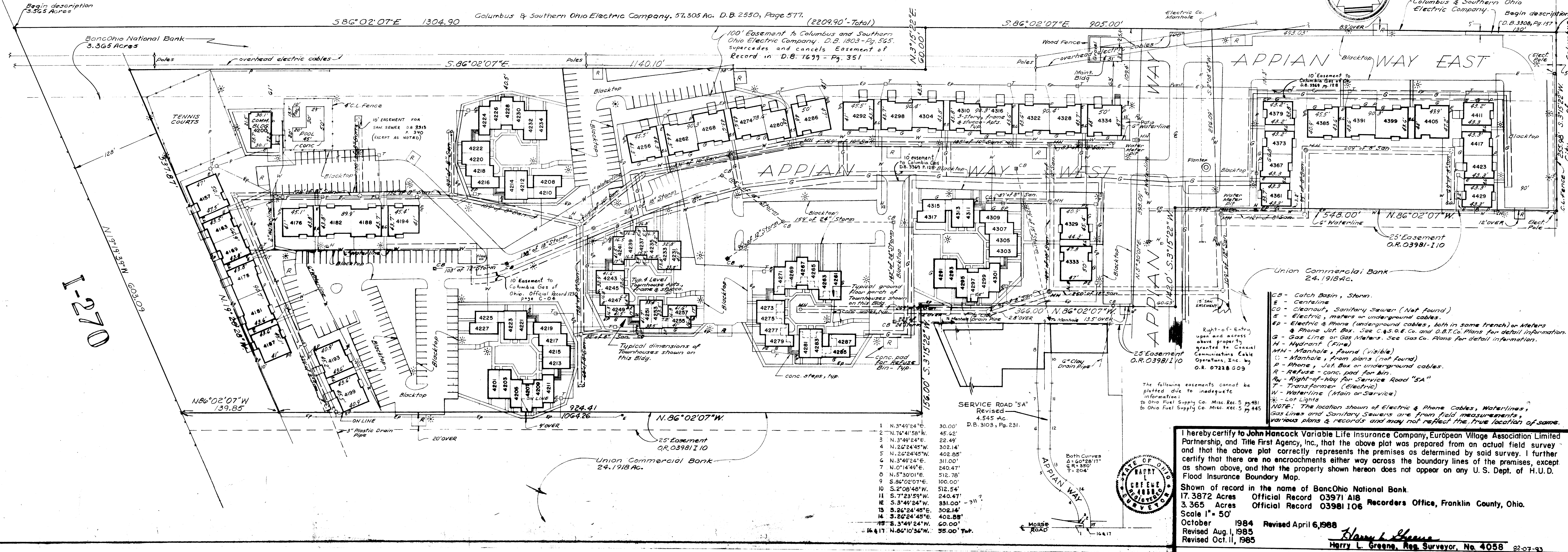
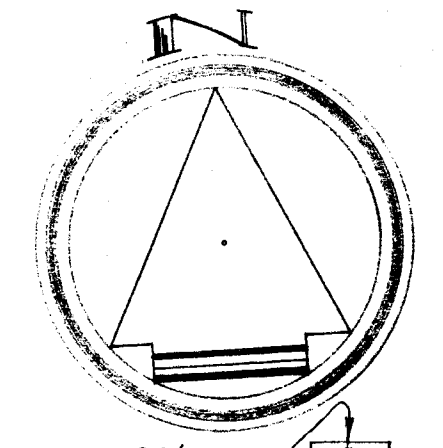


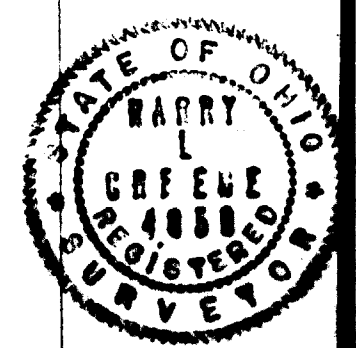
# MADRID SQUARE APARTMENTS

AS BUILT - SITE PLAN



023-1-270

1	N. 3°49'24"E	30.00'
2	N. 7°41'58"W	45.00'
3	N. 3°49'24"E	22.49'
4	N. 2°24'45"W	302.14'
5	N. 2°24'45"W	402.88'
6	N. 3°49'24"E	311.00'
7	N. 0°14'44"E	240.47'
8	N. 5°30'01"E	512.76'
9	S. 86°02'07"E	100.00'
10	S. 2°08'48"W	512.54'
11	S. 7°23'59"W	240.47'
12	S. 3°49'24"W	331.00' - 311'
13	S. 2°24'45"E	302.14'
14	S. 2°24'45"E	402.88'
15	S. 3°49'24"W	60.00'
16	N. 6°10'56"W	35.00' Tot.



**Legend:**  
 CB - Catch Basin, Storm  
 C - Centerline  
 CS - Cleanout, Sanitary Sewer (Not Found)  
 E - Electric, meters or underground cables.  
 EP - Electric & Phone (underground cables, both in some trench) on Meters  
 J - Phone Jst. Box. See C.G.S.O.E. Co. and D.B.T.C. Plans for detail information.  
 G - Gas Line or Gas Meters. See Gas Co. Plans for detail information.  
 H - Hydrant (Fire)  
 MH - Manhole, found (visible)  
 M - Manhole, from plans (not found)  
 P - Phone, Jst. Box or underground cables.  
 R - Refuse - conc. pad for bin.  
 RW - Right-of-Way for Service Road "SA"  
 T - Transformer (Electric)  
 W - Waterline (Main or Service)  
 L - Lot Lights

**NOTE:** The location shown of Electric & Phone Cables, Waterlines, Gas Lines and Sanitary Sewers are from field measurements, various plans & records and may not reflect the true location of some.

I hereby certify to John Hancock Variable Life Insurance Company, European Village Association Limited Partnership, and Title First Agency, Inc., that the above plat was prepared from an actual field survey and that the above plat correctly represents the premises as determined by said survey. I further certify that there are no encroachments either way across the boundary lines of the premises, except as shown above, and that the property shown hereon does not appear on any U.S. Dept. of H.U.D. Flood Insurance Boundary Map.

Shown of record in the name of BancOhio National Bank.  
 17.3872 Acres Official Record 03971 A18  
 3.365 Acres Official Record 03981 I06  
 Scale 1" = 50'  
 October 1984 Revised April 6, 1988  
 Revised Aug. 1, 1985  
 Revised Oct. 11, 1985

Harry L. Greene  
 Reg. Surveyor, No. 4058