

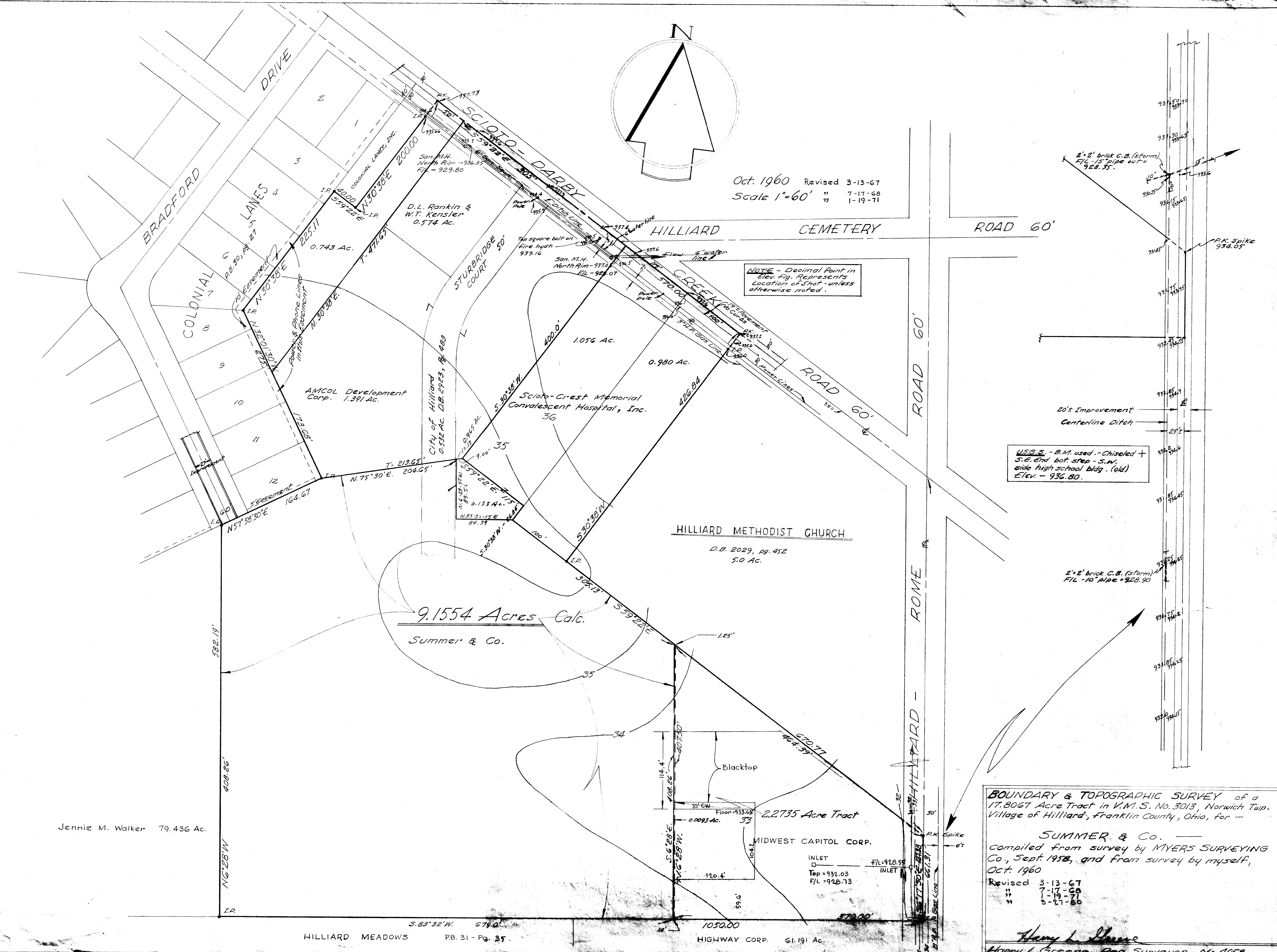
Oct. 1960 Revised 3-13-67  
Scale 1"=60' " 7-17-68  
" " 1-19-71

NOTE - Decimal Point in Elev. fig. Represents Location of Spot - unless otherwise noted.

U.S.G.S. - B.M. used - Chiseled +  
S.E. End bot. step - S.W. side High school Bldg. (old)  
Elev. - 936.80.

**BOUNDARY & TOPOGRAPHIC SURVEY** of a 17.8067 Acre Tract in V.M.S. No. 3013, Norwich Twp. Village of Hilliard, Franklin County, Ohio, for -  
**SUMMER & Co.**  
Compiled from survey by MYERS SURVEYING Co., Sept. 1958, and from survey by myself, Oct. 1960  
Revised 3-13-67  
" 7-17-68  
" 5-27-80

*Harry L. Greene*  
Harry L. Greene, Reg. Surveyor - No. 4058 106



Jennie M. Walker 79.436 Ac.

9.1554 Acres Calc.  
Summer & Co.

2.2735 Acre Tract  
MIDWEST CAPITOL CORP.

INLET  
Top = 932.03  
FIL = 928.73