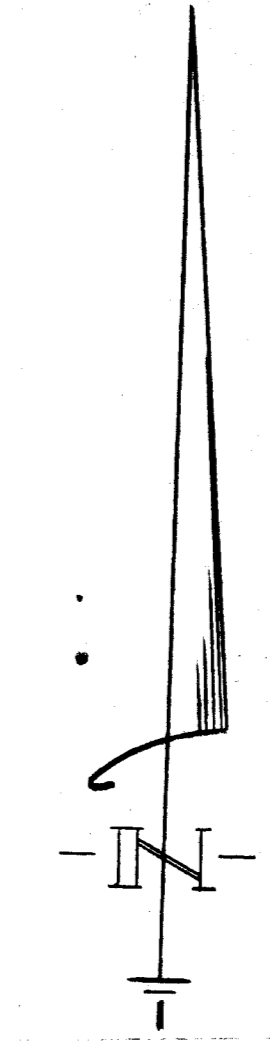


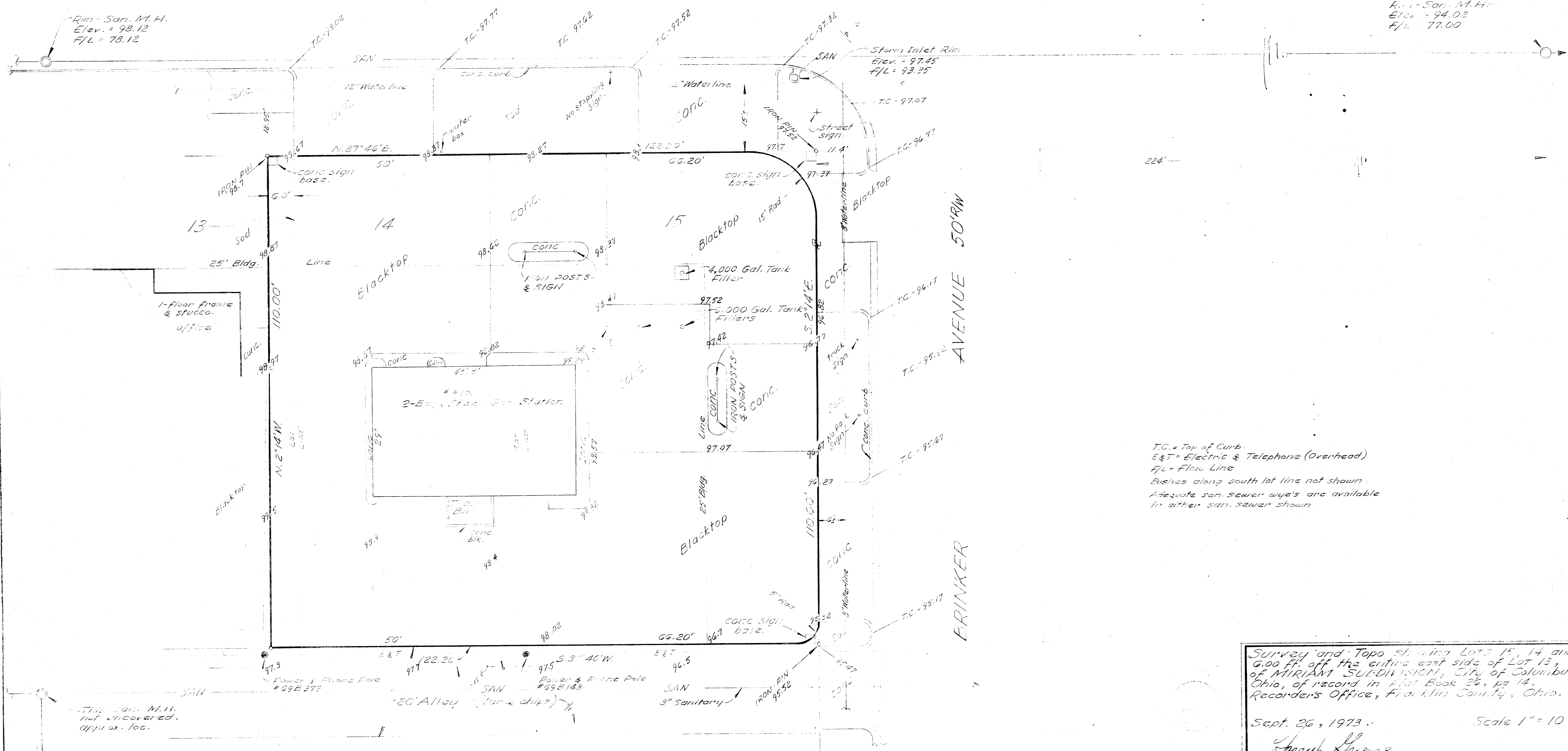
B.M. - Assume Elev. of 100.00 ft., Top West Bolt, Fire Hqd.

SULLIVANT

AVENUE 80' R/W



Rim - San. M. H. Elev. = 94.02 F/L = 77.00



T.C. = Top of Curb.
 E&T = Electric & Telephone (Overhead)
 F/L = Flow Line
 Bushes along south lot line not shown.
 Adequate san. sewer wye's are available in either san. sewer shown.

Survey and Topo showing Lots 15, 14 and 6.00 ft. off the entire east side of Lot 13, of MIRIAM SUBDIVISION, City of Columbus, Ohio, of record in Plat Book 26, pg 14, Recorder's Office, Franklin County, Ohio.

Sept. 26, 1973. Scale 1" = 10'-0"

Joseph Luene
 Harry L. Greene, Reg. Surveyor - 4053.

1146

This San. M.H. not uncovered. Approx. loc.

Power & Phone Pole #69B 379

Power & Phone Pole #69B 143

3" Sanitary

20' Alley

5.3" 46' W

5" Waterline

110.00'

110.00'

110.00'

110.00'

110.00'

110.00'

110.00'

110.00'

110.00'

110.00'

110.00'

110.00'

110.00'

110.00'

110.00'

110.00'

110.00'

110.00'

110.00'

110.00'

110.00'

110.00'

110.00'

110.00'

110.00'

110.00'

110.00'

110.00'

110.00'

110.00'

110.00'

110.00'

110.00'

110.00'

110.00'

110.00'

110.00'

110.00'

110.00'

110.00'

110.00'

110.00'

110.00'

110.00'

110.00'

110.00'

110.00'

110.00'

110.00'

110.00'

110.00'

110.00'

110.00'

110.00'

110.00'

110.00'

110.00'

110.00'

110.00'

110.00'

110.00'

110.00'

110.00'